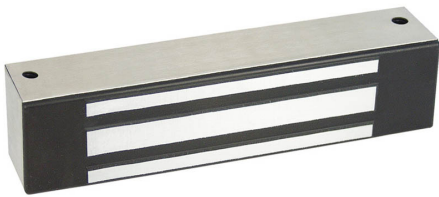


## M32B Magnalock®

272 kilos holding force direct mount Magnalock®

with automatic dual voltage & B Patented BondSTAT magnetic bond sensor

Recommended for applications where physical assault on the door is not expected, such as access controlled interior rooms and secure areas within buildings.



- Sustainability documentation
- Efficient, low power usage
- Automatic dual-voltage - no field adjustment required
- Fully sealed for weatherproof operations
- Size optimized for use with door closers
- Rust resistant—all ferrous metal surfaces plated for durability
- Instant release circuit - no residual magnetism
- Noise suppression with included MOV
- 3.05M of jacketed, stranded conductor cable
- Ultra-secure collapsing blind nuts mount to frame for strength and reliability
- MagnaCare® lifetime replacement, no fault, no questions asked warranty

### Options

- F Face Drilled
- D Integrated Door Position Switch (DPS)
- SS Split Strike

### Specifications

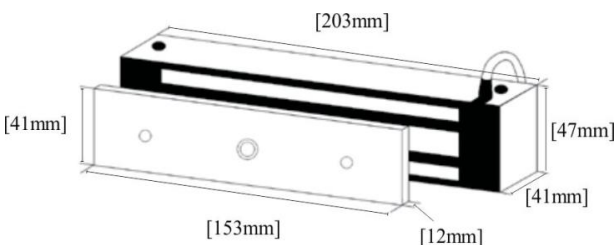
- Electrical - 300 mA at 12Vdc & 150 mA at 24Vdc
- Holding Force - 272 kilos
- Operating Temperature - minus 40°C to plus 60°C
- Indoor or Outdoor use

### Power Options

DC regulated power supplies (recommended)

PS01 - 12Vdc 2.0 Amp Power Supply/Fire Relay

PS02 - 24Vdc 1.0 Amp Power Supply/Fire Relay



### Securitron 32 Series - Electro-Magnetic Locks

The M32 electro-magnetic lock is ideal for traffic control in busy areas within secured or monitored perimeters. With unsurpassed durability, the M32 will last long after most buildings wear out. Applications include storage areas, rooms and hallways where reliability, high durability and low-maintenance are required.