



SAFETY AT THE HIGHEST LEVEL

EASI-DEC CATWALK STAGING

Assembly Instructions



Temporary access device conforming to the test requirements of
BS EN 12811 CLASS 2 & EN13774 CLASS C

Easi-Dec Access Systems Ltd.,
Merlin House,
Blaydon Road,
Sandy
SG19 1RZ
Tel: +44 (0) 1767 691812
Fax: +44 (0) 1767 691802

E-Mail: info@easi-dec.com
Internet: www.easi-dec.com

PLEASE BE ADVISED: Before assembling the Easi-Dec Catwalk staging for the first time, it is highly recommended that Installers familiarise themselves with the component parts and carry out a test assembly and disassembly in a safe area away from the point of final installation. All component parts detailed in the operating instructions must be used in the assembly of the system. Should a piece be missing or appear defective do not continue to assemble and contact Easi-Dec Immediately.

Step1



Lay out the components ready for assembly.

Step 2



Position the Easi-Decs 4m apart using the Guardrail or staging as a guide. **REMEMBER:** To allow a minimum of 300mm overhang of Catwalk on each Easi-Dec.

Step 3



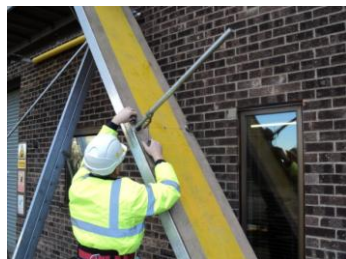
Clip on with a Lanyard and remove the pin and 'R' Clips from the Internal end Guardrails and fold them outwardly, repeat for the second deck. This will provide access for the Catwalk to be positioned.

Step 4



Tie a rope through the Guardrail sockets and secure at the end of the Catwalk.

Step 5



Install the centre posts on the Catwalk and secure with Pin and 'R' Clip. This will allow assembly of the guardrail set prior to access.

Step 6



With both operatives clipped on with lanyards the Catwalk can now be raised into position. An operative must hold onto one end and guide while the second operative hoists the opposite end up until the platforms Level at Dec height. The catwalk is then pulled into position with a minimum of 300mm overhang on each platform.

Step 7



With both operatives clipped on with Lanyards turn the platform on its side and release the towing rope.

Step 8



Using the 2 'Ratchet' Straps provided, fix the 'Catwalk' to the Easi-Dec's as shown above. Pass the straps round the 'Horns' of the Easi-Dec frame and catwalk, tightening the buckle in a position where it will not trip the user.

Step 9



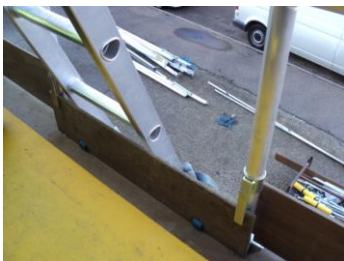
Fit the end uprights and position the front rail over the uprights from the 2m platforms. Make sure each operative is clipped on with a Lanyard. At this stage tighten all grub screws and secure uprights with pin's and 'R' Clip's.

Step 10



Fit the inner Guardrail the same way as in step 9. Remember to be clipped on with a lanyard at all times when fitting the Guardrails whenever possible

Step 11



Raise toe-boards across the Ladder access point to complete the assembly

Remember

- Always ensure the Ladders are secure before raising the Catwalk.
- All Ladders should be erected using 4:1 rule and tied off for maximum safety.
- Always ensure a minimum of 300mm of the staging sits on each Platform.
- Always assess the site for suitability. Top fixing the Dec and/or spiking of the feet maybe required.
- Always strap the staging securely onto the platform.
- Maximum load is 600kg evenly distributed.

Dismantle: Reverse the above assembly.