



**SAFETY AT THE HIGHEST LEVEL**

# **2m Dec – With Super Legs Platform System**

## **Assembly Instructions**



Temporary access device conforming to the test requirements of  
BS EN 12811 CLASS 2 & EN 13374 CLASS C

Easi-Dec Access Systems Ltd.,  
Merlin House,  
Blaydon Road,  
Sandy  
SG19 1RZ  
Tel: +44 ( 0 ) 1767 691812  
Fax: +44 ( 0 ) 1767 691802

E-Mail: [info@easi-dec.com](mailto:info@easi-dec.com)  
Internet: [www.easi-dec.com](http://www.easi-dec.com)

**PLEASE BE ADVISED:** Before assembling the Super-Dec system for the first time, it is highly recommended that Installers familiarise themselves with the component parts and carry out a test assembly and disassembly in a safe area away from the point of final installation. All component parts detailed in the operating instructions must be used in the assembly of the system. Should a piece be missing or appear defective do not continue to assemble and contact Easi-Dec Immediately.

### Step 1



Lay out the components ready for assembly with the platform against the wall with wheels on the ground. Identify the corresponding leg for each side of the platform (Green – Left / Red – Right)

### Step 2



Fit both Legs using the pins and 'R' Clips provided and ensure that the pins are inserted outside in, to minimise the risk of the 'R' Clips being Knocked out. **REMEMBER:** Fit the Legs to the 'Normal use' hole Labelled on the underside of the platform.

### Step 3



Pull out the clips and release the two Cross Braces from their stowed position.

### Step 4



Fit the Horizontal Brace over the retaining studs.

### Step 5



Swing out each brace over to the opposite Leg and secure onto the retaining stud using the two 'R' clips provided.



Secured braces

### Step 6



Swing the Dec support struts and secure with the pins and 'R' Clips provided

### Step 7



Pull out the 'R' clips and release the two Cross Braces from their stowed position. This is done from the underside of the Super leg.  
**NOTE:** Super legs have 2 sets of Cross Braces.

### Step 8



**Fig 1.** Secure Brace.

Swing out each brace over to the opposite Leg and secure onto the retaining stud using the two 'R' clips provided in **Fig 1**. **NOTE:** These are fitted from the underside.

### Step 9



With bent Legs and a straight back, lift the Super-Dec firstly to waist height, then using your arms to offer it to the wall and roll it up into position.  
**NOTE:** Pay particular attention to the balance of the Super-Dec platform, the position of the handhold and the way the Claw foot grips whilst taking a second handhold.

### Step 10



The Feet maybe adjusted in 25mm increments. Fit Pin and 'R' Clip to secure.

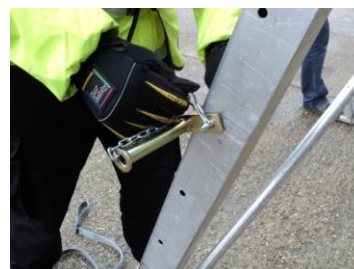
### Step 11



**Fig 2.** Remove pins

Remove the height adjuster pins and pull evenly on both straps until the desired height is reached. **See Fig 2.**

### Step 12



Fit the '**Budgie step**' into position and secure with Pin and 'R' Clip. Position the '**Budgie Step**' about waist height so it allows enough height to reach the Pins.

### Step 13



Stand on the '**Budgie step**' and locate the Leg Pin and 'R' Clip while the other operative holds the Platform in position, by taking the strain on the strap. This Leg is now secure.

### Step 14



For the second Leg move the '**Budgie step**' and repeat the process by standing on the '**Budgie Step**' and secure the Leg Pin and 'R' Clip.



### Step 15



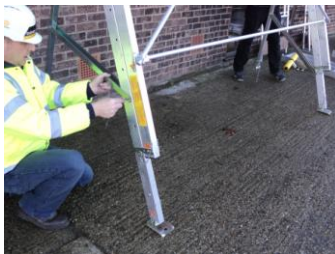
Fit the Back Legs by removing the Middle Pin first, holding onto it and lowering the brace.

### Step 16



Remove the top Pin and fit the Back Leg at about eye level to the Main Leg.

### Step 17



When fitting the Brace the Back Leg Foot should be as close to the wall as possible, without fouling the wall or touching the ground. Fit the Pin and 'R' Clip.

### Step 18



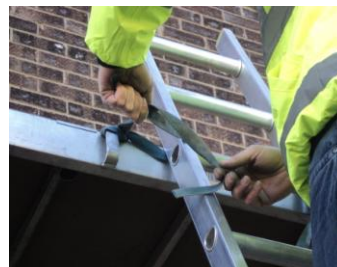
Drop the Feet to the ground and take them back up to the next hole and secure with the Pin and 'R' Clip. Ideally a finger's clearance under them will ensure the Easi-Dec Platform remains in contact with the wall.

### Step 19



The Ladder is placed against the Platform, extended 1 metre above platform level between the Ladder Restraints of the Platform and sided to the right to allow enough room to step through on the left hand side.

### Step 20



**Fig 3** Ladder Spurs.

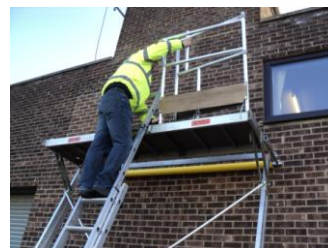
Foot the Ladder or use a suitable Ladder safety device, such as Easi-Dec Ladder Spurs shown in **Fig 1**. Climb the ladder and tie off both sides with the Ladder Ties provided.

### Step 21



Position the Right Guardrail over your shoulder, when climbing the Ladder, maintain three points of contact. **REMEMBER:** When fitting the Guardrail to the Left hand side of the Platform carry up on the Left shoulder.

### Step 22



Feed one arm through the top rung of the Ladder and fit the Right Guardrail into the two front sockets and gently ease the back of the Guardrail open. **(NOTE: Always Feed one arm through the top rung as this provides a handhold when positioning the Guardrail.**

### Step 23



Repeat **STEPS 16 & 17** for the Left Guardrail.

### Step 24



Climb onto the Platform and position the rear uprights into the rear locating sockets on the platform for both the Left and right handed Guardrail. Make sure all upright have been secured with pins and 'R' Clips.

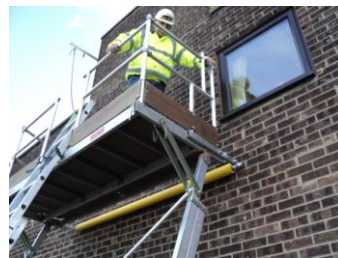
### Step 25



**Fig 4.** Raise Toe- board

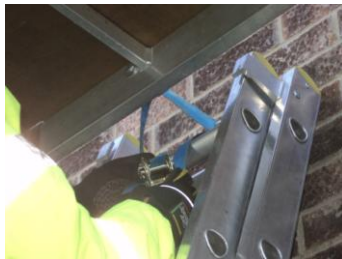
Close the Safety Draw Bar and lock in to position. **Fig 4.** Raise the Toe board across the Ladder access point to complete the assembly and fix in position with the Toe-Board Clips.

### Step 26



Climb onto the Platform and position the rear uprights into the rear locating sockets on the platform for both the Left and right handed Guardrail. Make sure all upright have been secured with pins and 'R' Clips.

### TOP FIX



For additional safety the Super-Dec must be top fixed to the wall via an Eye-Bolt fitted.

**Remember**

- Back legs must be fitted.
- All Ladders should be erected using 4:1 rule and tied off for maximum safety.
- Always take care to control the decent of the Dec using the straps
- Always assess the site for suitability. Top fixing the Dec and/or spiking of the feet maybe required.
- To comply with the BS EN 12811 & EN 13374 then the Dec needs to be tied into the structure, however a risk assessment should to be undertaken in all instances to ascertain the correct procedure.
- **Remember:** always tie the Dec's into the structure if used as edge protection.
- It is important when handling the Easi-Dec products in elevated weather temperatures, that the appropriate PPE is used.

**Dismantle**

- To Dismantle reverse the above procedure.