



SAFETY AT THE HIGHEST LEVEL

Trim-Line Platform System

Assembly Instructions



Temporary access device conforming to the test requirements of
BS1139: Part 3: 1994 (HD1004: 1992)

Easi-Dec Access Systems Ltd.,
Merlin House,
Blaydon Road,
Sandy
SG19 1RZ
Tel: +44 (0) 1767 691812
Fax: +44 (0) 1767 691802

E-Mail: info@easi-dec.co.uk
Internet: www.easi-dec.co.uk

PLEASE BE ADVISED: Before assembling the Trim-Line system for the first time, it is highly recommended that Installers familiarise themselves with the component parts and carry out a test assembly and disassembly in a safe area away from the point of final installation. All component parts detailed in the operating instructions must be used in the assembly of the system. Should a piece be missing or appear defective do not continue to assemble and contact Easi-Dec Immediately.

Step1



Lay out the components ready for assembly with the platform against the wall with wheels on the ground. Identify the corresponding leg for each side of the platform (Green – Left / Red – Right)

Step 2



Fit both Legs using the pins and 'R' Clips provided and ensure that the pins are inserted outside in, to minimise the risk of the 'R' Clips being Knocked out. **REMEMBER:** Fit the Legs to the 'Normal use' hole Labelled on the underside of the platform.

Step 3



Swing the Dec support struts and secure with the pins and 'R' Clips provided.

Step 4



Pull out the clips and release the two Cross Braces from their stowed position.

Step 5



Fit the Horizontal Cross Brace over the retaining studs.

Step 6



Swing out each brace over to the opposite Leg and secure onto the retaining stud using the two 'R' clips provided.

Step 7



Lift the Trim-Line up to waist with using bent Legs and a straight back, firstly to waist height, then using your arms to offer it to the wall and roll it up into position.
NOTE: Pay particular attention to the balance of the Trim-Line, the position of the handhold and the way the Claw grips whilst taking a second handhold.

Step 8



Adjust the height by removing the two Leg Pins and rolling the Trim-Line up the wall to the desired height and replace both Leg pins remembering to also replace the safety 'R' Clips provided. After adjusting to height it will be necessary to re-level the Trim-Line by moving the feet either away or towards the wall.

Step 9



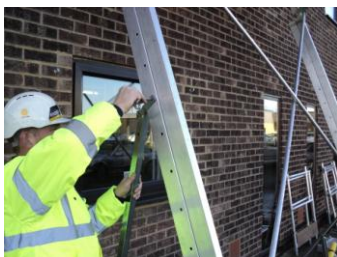
The Feet maybe adjusted in 30mm increments but in extreme cases either Leg can be adjusted Independently. Fit Pin and 'R' Clip to secure.

Step 10



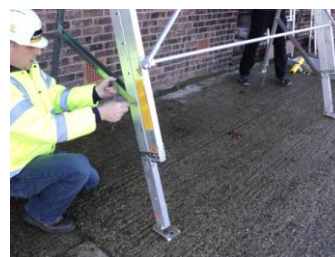
Fit the back Legs by removing the middle pin first, holding onto it and lowering the brace.

Step 11



Remove top pin and fit to the back Leg at about eye level.

Step 12



When fitting the Brace, position the foot as close to the wall as possible without fouling on the wall or touching the ground. Fit the pin and 'R' Clip.

Step 13



Drop the feet to the ground and take it up to the next hole and secure with the pin and 'R' Clip. Ideally a finger's clearance under them to ensure the Trim-Line remains in contact with the wall

Step 14



The Ladder is placed against the Platform, extended 1 metre above platform level between the Tie in Lugs of the Platform and sided to the right to allow enough room to step through on the left hand side.

Step 15



Fig 1 Easi-Dec Ladder spurs.

Foot the Ladder or use a suitable Ladder safety device, such as Easi-Dec Ladder spurs shown in **Fig 1**. Climb the ladder and Tie off both sides with the Ladder ties provided.

Step 16



Position the Guardrail over your shoulder, when climbing the Ladder maintain three points of contact. **REMEMBER:** When fitting the Guardrail to the right hand side of the Platform carry up on the right shoulder and these steps are repeated for the Left side.

Step 17



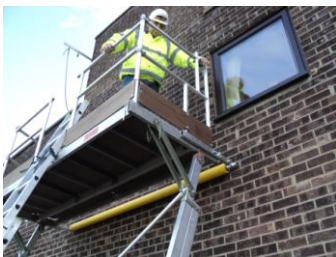
Feed one arm through the top rung of the Ladder this provides a handhold when offering the Guardrail into position. **(NOTE: This is why the Ladder needs to be extended above the platform by 1 metre to provide a handhold)**

Step 18



Fit the Right hand guardrail into the two front sockets and gently ease the back of the Guardrail open. **REMEMBER:** Always have your arm through the top rung of the Ladder when positioning these guardrails. Repeat these steps for the Left hand Guard rail.

Step 19



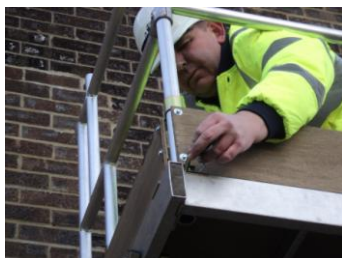
Climb onto the Platform and position the rear uprights into the rear locating sockets on the platform for both the Left and right handed Guardrail.

Step 20



Close the Safety Draw Bar and lock in to position.

Step 21



Secure all the uprights in the locating sockets with the pins and 'R' Clips provided.

Step 22



Raise the Toe-Board across the Ladder access point and secure with the toe board clips, assembly is now completed.

TOP FIX



For additional safety the Trim-Line may be top fixed to the wall via an Eye-Bolt fitted to the wall.

Remember

- Back legs must be fitted.
- All Ladders should be erected using 4:1 rule and tied off for maximum safety.
- Always assess the site for suitability. Top fixing the Dec and/or spiking of the feet maybe required.

Dismantle: Reverse the above procedure.