



Interiors with a new character

When renovating or furnishing a home, we look for products that are not only beautiful and unique, but also durable, long-lasting and easy to install. Increasingly, we want to enjoy the effect of change as soon as the work is completed. SPC waterproof wall panels are designed to give any interior a quick makeover without any mess. They represent a guarantee of saving time and money, while ensuring high quality materials.



Elegance and functionality – the perfect combination

SPC wall panels are 100% waterproof and safe. It is perfect for bathrooms, kitchens and other residential interiors, as well as spaces of a commercial nature.



Customised technology



Our panels are manufactured using SPC (Stone Polymer Composite) technology. They are based on a hard composite core, which in turn has been coated with a decorative layer, and protected with a UV-resistant coating. This gives the panel a high resistance to scratches and damage. Thanks to the click design, the installation of the panels is simple and intuitive, and the joints are very subtle and do not require grouting.

A wealth of possibilities

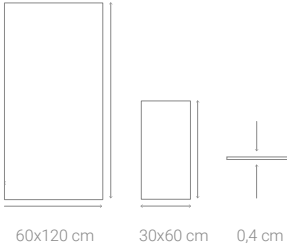
The attractive designs mean that SPC wall panels can be installed in almost any room, giving it a completely new look and feel. Depending on your preferences, the SPC wall panels can either be the main design within the interior or can merely be an accent. Because the panels are waterproof, they can successfully be installed in rooms exposed to moisture such as a kitchen, bathroom or laundry room. This product will also do well in areas prone to temperature changes.



Calacatta Snow



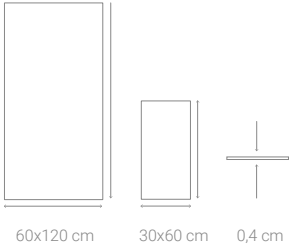
The timeless Calacatta pattern in a white shade with a matt surface is the perfect design combination. Matt designs are increasingly popular, and have a wider range of uses than their glossy counterparts. The Calacatta Snow décor is ideal for interior designs based on neutral colours, in which natural accessories play a major role.



Calacatta White



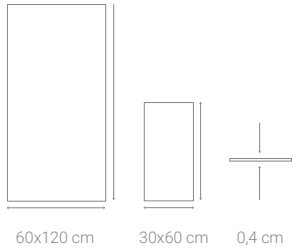
Calacatta White is a smooth pattern in white, subtly interspersed with darker veins. Its versatility allows it to be used in any interior – it will add a certain chic to a living room and optically enlarge a bathroom. The colour white, although recently increasingly in competition with black, is still extremely popular and desirable. The classics stand up for themselves!



Calacatta Black



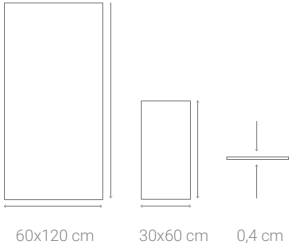
Dark decors have a growing group of supporters. Calacatta Black makes an interior more prestigious and elegant. It looks very good in minimalist spaces, lofts as well as sophisticated, classic bathrooms and kitchens.



Concrete Light

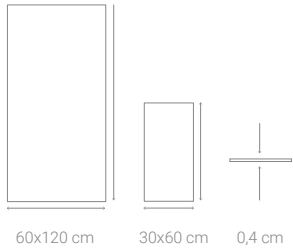


Can interior concrete have a warmer side? Concrete in interiors creates a unique atmosphere. The grey fabric is a great backdrop for accessories and furniture in bold colours. Combined with wooden accents, you can get quite a modern interior where it's easy to relax after a long day at work.





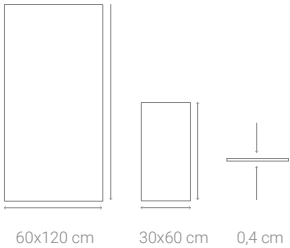
The Ash Grey marble pattern complements elegant flats which are decorated with other details and original fabrics very nicely. It is ideal for loft interiors where, together with wood, it can wonderfully adorn a space.



Marble Skin



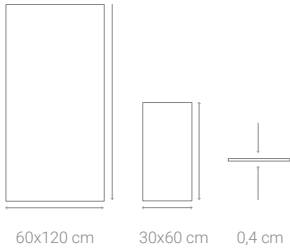
Marble décors are frequently used in interior design. Until recently, marble was associated only with residences decorated in a glamorous or classical style. It is worth noting, however, that these patterns have been with us for a long time, but still rank at the top of all décors – a coincidence or a timeless beauty? Selected by contrast or due to similarity with other interior elements.



Dark Stone



Dark-coloured interiors do not have to be dull and dreary. Dark colours are tried-and-tested ways to add a certain chic and elegance to interiors. Introducing dark colours into an interior will not only add an original touch, but will also create an interior that is designed for relaxation and unwinding.





QUICK RENOVATION



QUICK TO INSTALL



WATERPROOF



INSTALLATION
WITH GLUE



DIY INSTALLATION

SPC wall panels have high impact resistance, do not deform, and their solid layer remains intact.
SPC wall panels are 4 mm thick, taking up far less surface area than ceramic tiles, but are just as resistant.

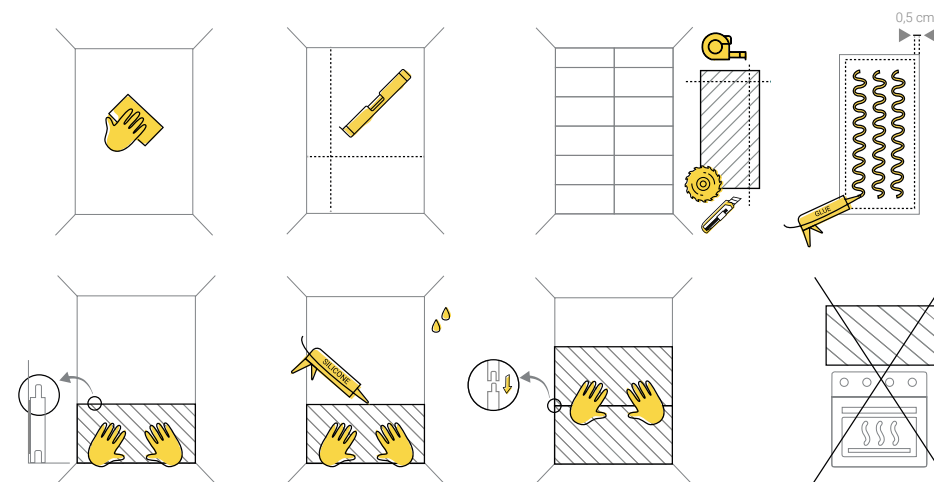
Key features of SPC wall panels:

- 1 they are easy to install, perfect for new construction or renovation projects, and can successfully be installed on a variety of surfaces, including ceramic tiles;
- 2 they do not require grouting – thus avoiding areas potentially exposed to mould and mildew;
- 3 they are 100% waterproof;
- 4 properly installed, they protect the wall from moisture, and can successfully be installed in showers or other areas exposed to potential water contact;
- 5 they are impact resistant – no less than 10J (23.03) [PN-EN 13245-2:2009 / AC: 2010];
- 6 pleasant to the touch, and much warmer than classic marble;
- 7 they are easy and intuitive to install, without the need for specialised tools or waiting for professionals who often have long deadlines;
- 8 they are clean to install – no dust when cutting as in the case of tiles;
- 9 since the panels are installed using glue, the interior is ready for use more quickly;
- 10 they can be cut, shaped and drilled;

All colours shown in this publication are examples, and should not be considered original.

It has never been so easy!

Installing the panels is intuitive and simple. All you have to do is clean the wall, measure, cut the panels accordingly and stick them directly to the wall using adhesive. You can make changes to the room yourself, quickly and with basic tools. The effect of the interior makeover is impressive and visible immediately upon completion. Detailed installation instructions are available in the package and on vilohome.com

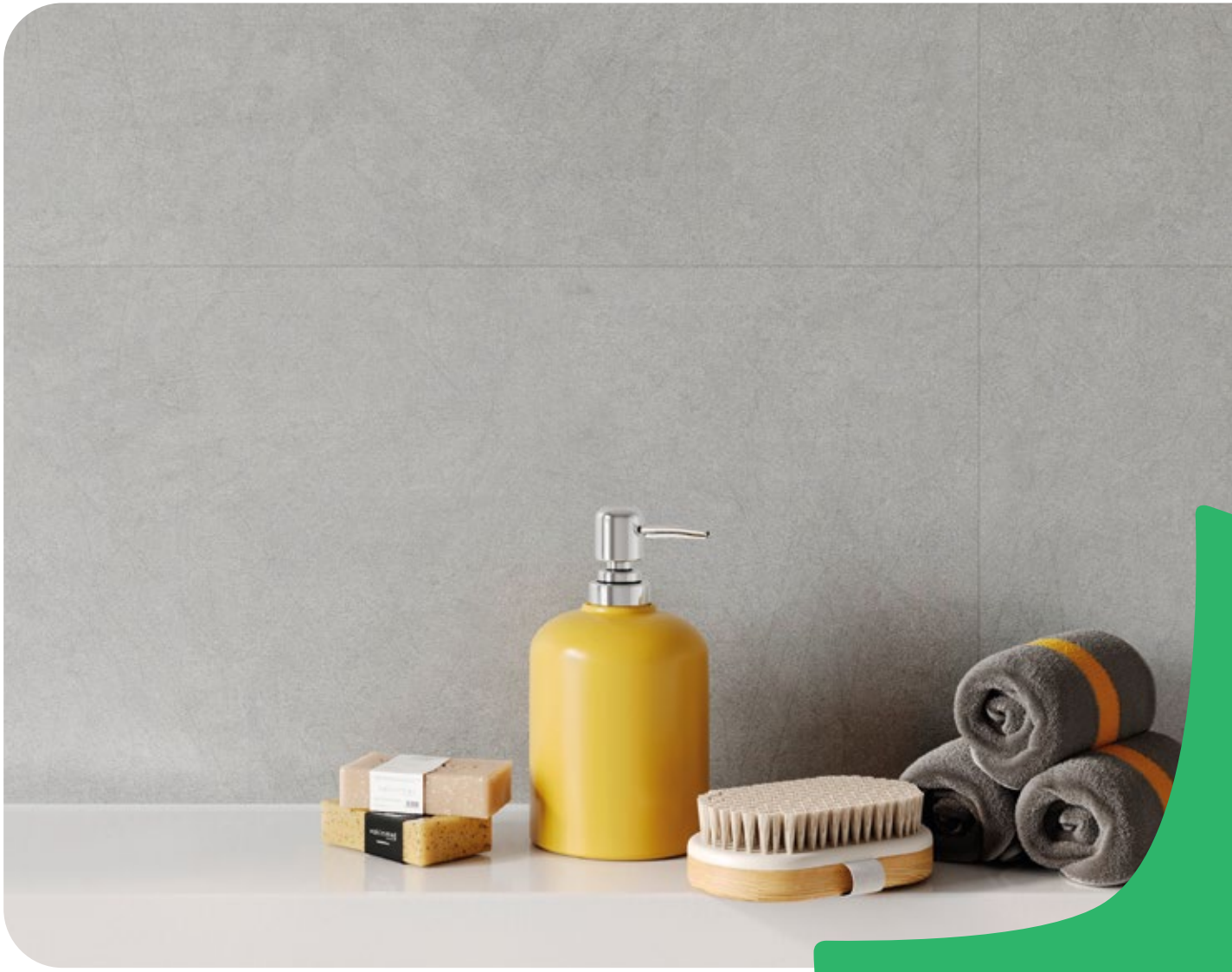


Perfect cleanliness

SPC wall panels are very easy to clean. Simply use a damp cloth or mild detergent to wipe the soiled surface, and rinse thoroughly with water.



vilohome.com



Rockwell Building Plastics
Rockwell House, Birmingham Road
Millisons Wood
Coventry CV5 9AZ
01676 523386
info@rockwellsheet.com

www.voxcladding.co.uk
www.rockwellbuildingplastics.co.uk



V12/2022