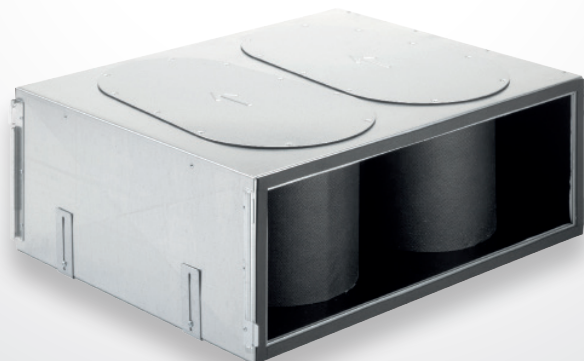
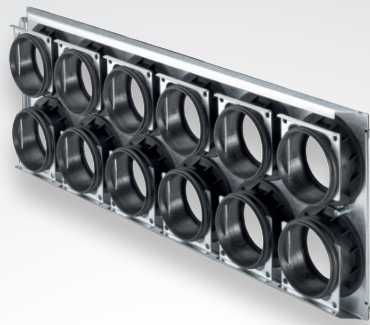


# Zehnder ComfoWell 625

Technical specification for modular attenuator, filter and manifold



## Advantages

The Zehnder ComfoWell 625 is a modular system consisting of attenuators, fine grade filters and active carbon filters all integrated for use with a rigid or semi-rigid ductwork approach.

With a width of 625mm it can be used for connecting up to 12 ComfoTube connections. The systems compact dimensions ensure good sound absorption and also make it easy to clean. Rigid pipe can be connected to the end plate securely by utilising the gasket seal connection. All other components are fitted using the locking slide connections to form an air tight and robust seal. Noise reduction can be improved by combining two attenuators together. Filters are available in F7 or F9 grade in addition to an odour neutralising active carbon filter.



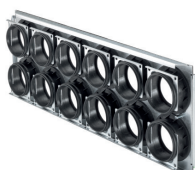
ComfoWell Attenuator



ComfoWell Manifold



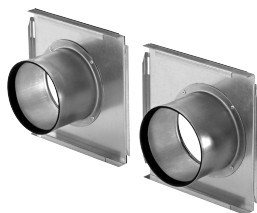
ComfoWell Filter Housing



Mounting Plate



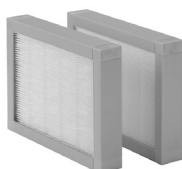
End Plate



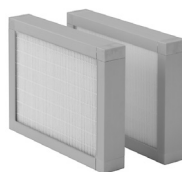
Mounting Set



Spacer Frame



Fine Dust Filter F7



Fine Dust Filter F9



Active Carbon Filter

## Technical Data

### Zehnder ComfoWell 625

Casing	Galvanised Steel Sheet
Interior Lining	Closed-pore Melamine-foam
Operating Temperature	-25 to +60°C
Maximum Airflow	480 m³/h or 133 l/s

## Benefits

- Attenuator, fine grade filter, active carbon filter and manifold all combined into one space saving combination with the option to bespoke build exactly what's required.
- Easy to assemble thanks to its modular and compact design.

## Article Numbers

Description	Product Code
Attenuator CW-S 625	990 323 505
Manifold Box CW-D 625	990 323 630
Filter Housing CW-F 625	990 323 555
Mounting Plate CW-M 625-12 x 75	990 323 631
Mounting Plate CW-M 625-12 x 90	990 323 632
End Plate CW-P 625 – DN 150	990 323 636
End Plate CW-P 625 – DN 160	990 323 637
End Plate CW-P 625 – DN 180	990 323 638
End Plate CW-P 625 – DN 200	990 323 639
Spacer Frame CW-DF 625	990 323 634
Fine Dust Filter CW-F7 625	990 323 653
Fine Dust Filter CW-F9 625	990 323 654
Active Carbon Filter CW-FC 625	990 323 655
Mounting Set CW-K-625 - for ComfoAir	990 323 642

## Specification Text

### Attenuator:

Zehnder ComfoWell attenuator CW-S 625. Rectangular compact attenuator with highly efficient sound insulation combined with low pressure losses. The attenuator can be used individually or in combination with all ComfoWell components. The airtight connection between components is via a clamping strip. For cleaning purposes the sound absorbing element can be removed. Mounting on the wall or ceiling is done using the supplied fully adjustable installation mounts.

#### Technical Data:

- Insertion loss of 13,7 dB / 250 Hz
- Casing: Steel plate, galvanized
- Sound absorbing element: Foam material with sanitation coating
- Dimensions: Length: 500 mm; Width: 625mm; Height: 230 mm

### Manifold Box:

- Zehnder ComfoWell manifold box CW-D 625. Rectangular compact design with closed pore internal lining. Suitable for use with the mounting plate for ComfoTube 75mm x 12 connections or 90mm x 12 connections. The mounting plate can be mounted on the top or side of the manifold box. The airtight connection between components is via a clamping strip. For cleaning purposes the manifold box side plate can be removed for easy access. Mounting on the wall or ceiling is done using the supplied fully adjustable installation mounts.

#### Technical Data:

- Casing: Steel Plate, galvanized
- Dimensions: Length - 230mm; Width - 325mm; Height - 230mm

### Filter Housing:

- Zehnder ComfoWell filter housing CW-F 625. Rectangular compact design for use with a fine pollen filter graded F7, a fine dust filter graded F9 or an active carbon filter to neutralise odors in the supply air duct run. The filter elements are not included with the filter housing and need to be purchased separately. The filter housing can be used individually or in combination with all ComfoWell components. The airtight connection between components is via a clamping strip. Mounting on the wall or ceiling is done using the supplied fully adjustable installation mounts.

#### Technical Specifications:

- Casing: Steel Plate, galvanized
- Dimensions: Length - 300mm; Width - 625mm; Height - 230mm

### Mounting Plate:

Zehnder ComfoWell mounting plate CW-M625-12 x 75 or 90. Manifold mounting plate for connection of 12 x ComfoTube 75mm or 90mm semi-rigid ducting. The mounting plate includes a protective film and the necessary mounting accessories.

### End Plate:

Zehnder ComfoWell end plate CW-P 625 - DN150 / DN160 / DN180 / DN200 (with centre connection) for the connection to the ComfoWell attenuator/manifold box or filter housing to the matching ducting size required. The end plate includes the necessary mounting accessories.

### Spacer Frame:

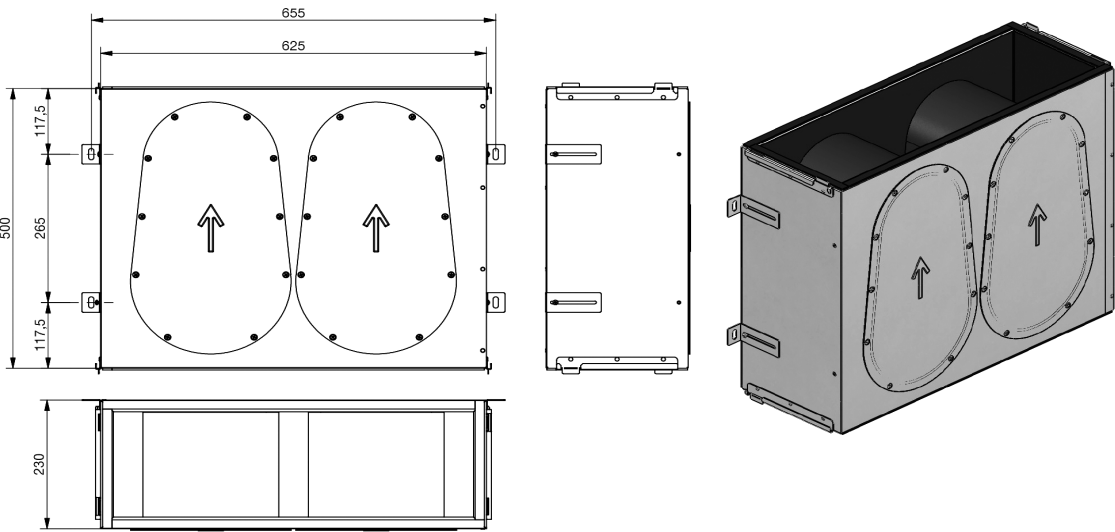
Zehnder ComfoWell spacer frame CW-DF625. Rectangular frame for use in the event of uneven surfaces when connecting components and mounting plate (concreted in place) are at 90 degrees. The spacer frame includes the necessary mounting accessories.

### Filter:

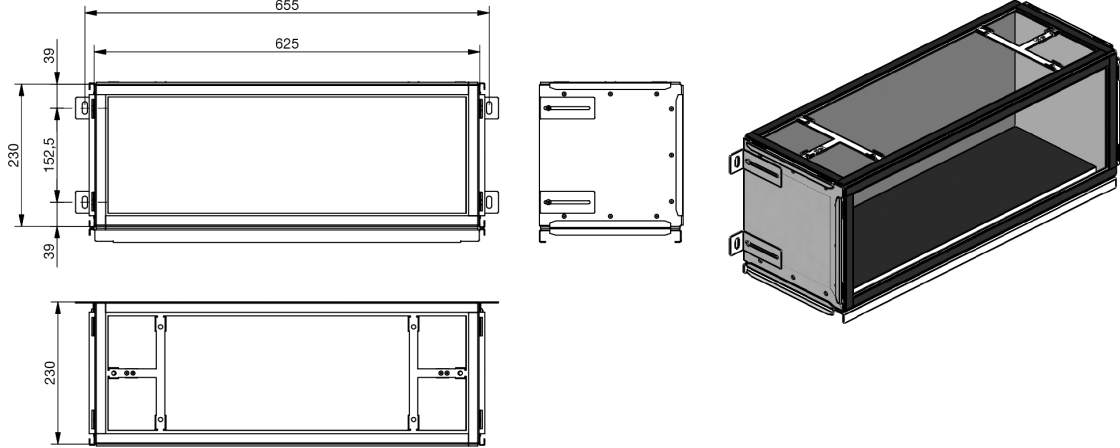
Filter for installation in the filter housing CW-F 625. Filter grades F7 (fine pollen filter), F9 (tobacco smoke) and active carbon filter to neutralise odours.

Dimensions

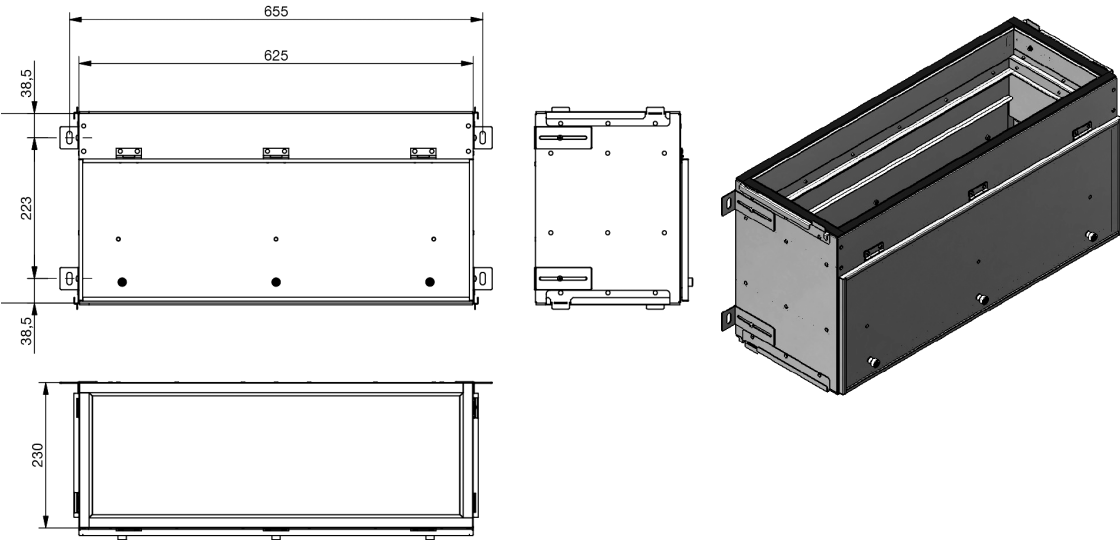
Attenuator



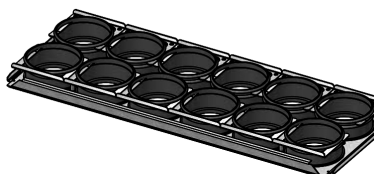
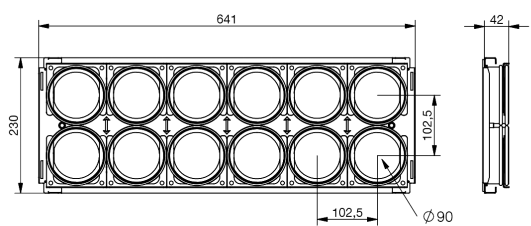
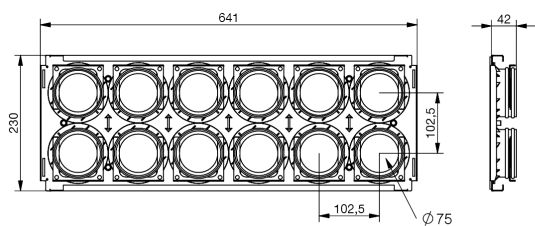
Manifold Box



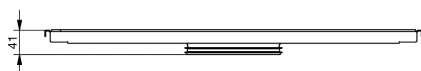
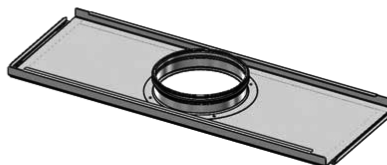
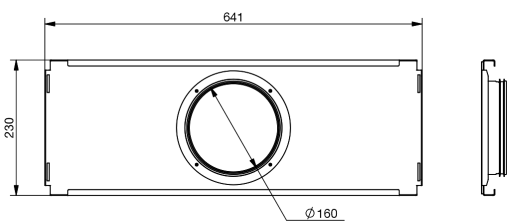
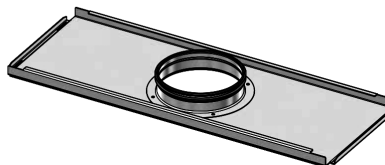
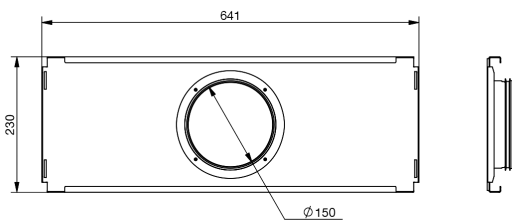
Filter Housing

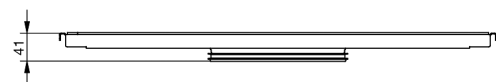
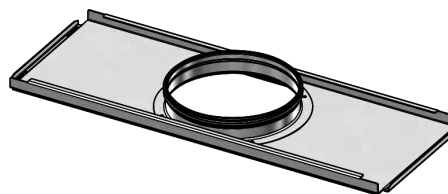
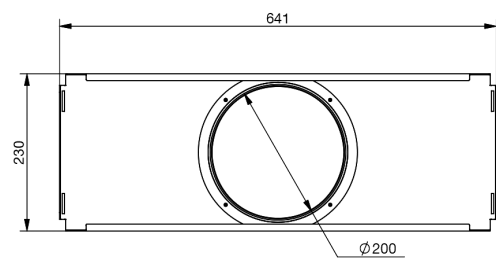
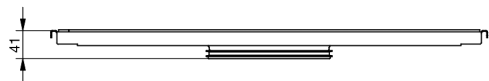
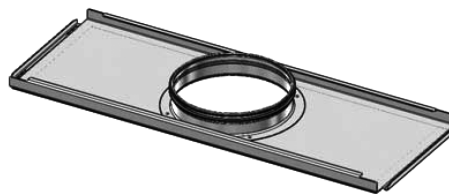
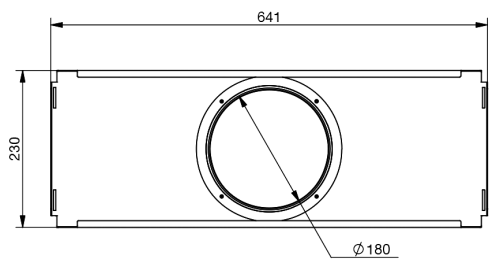


## Mounting Plate

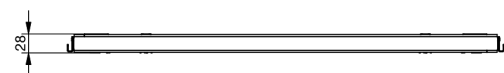
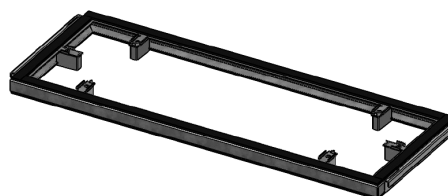
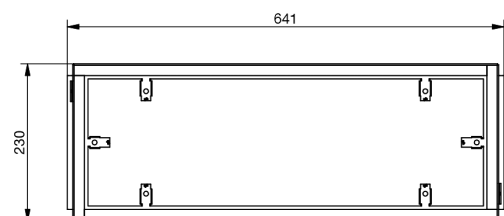


## End Plate

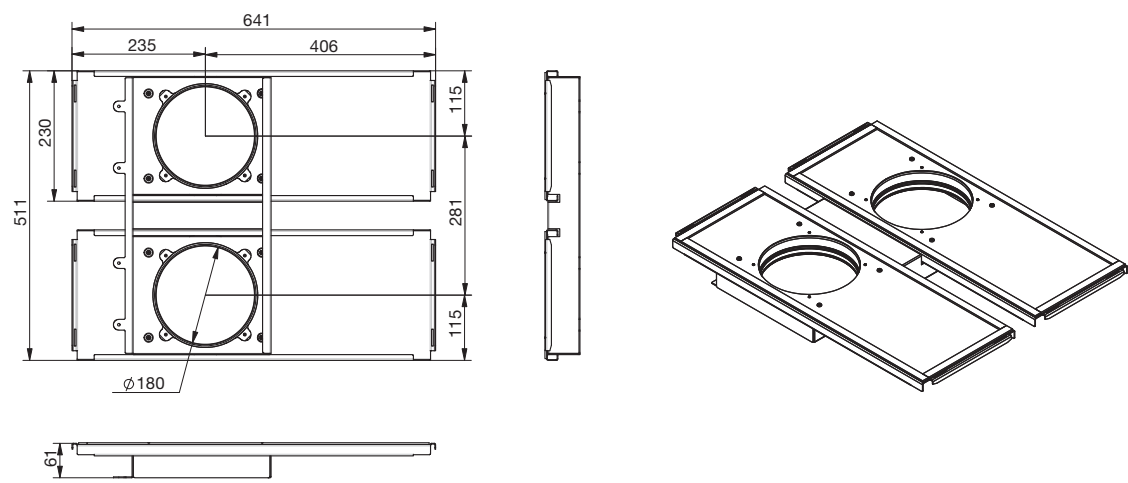




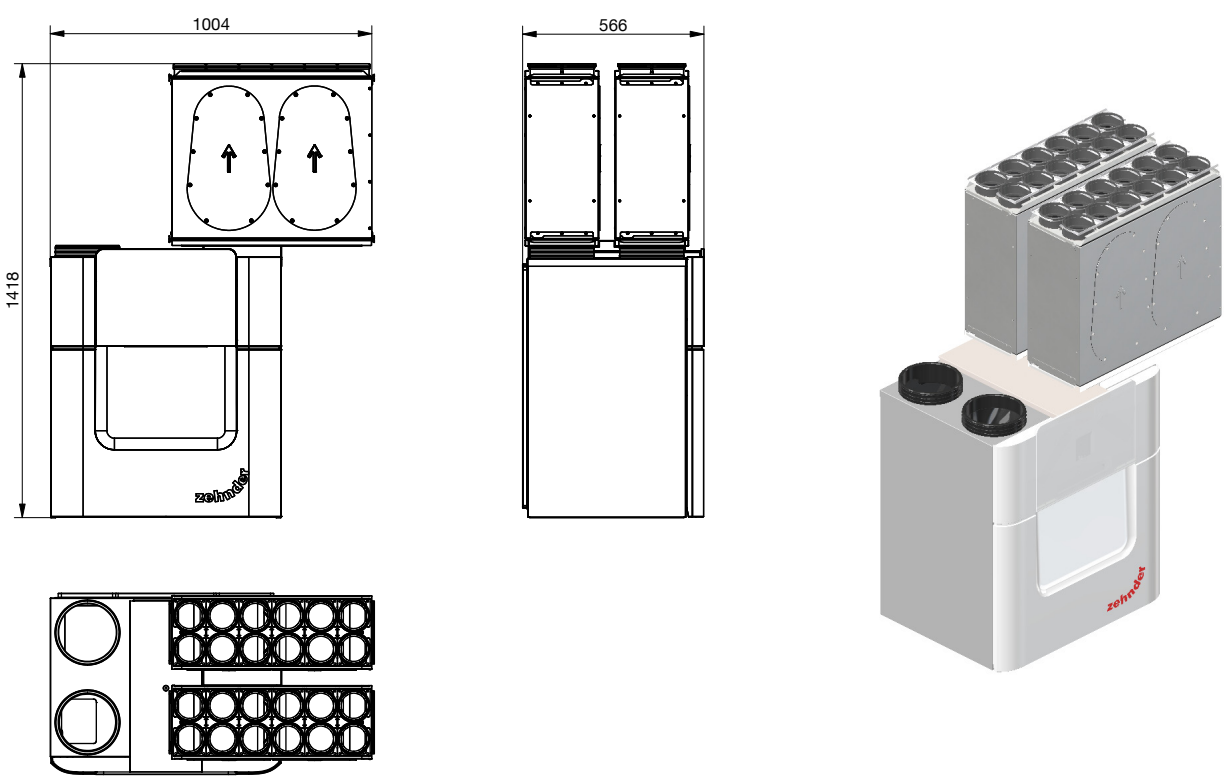
### Spacer Frame



Mounting Set ComfoAir Q450/600

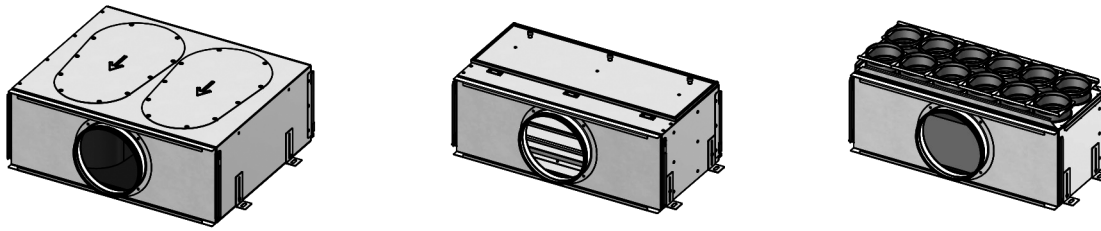


ComfoAir Q450/600 ST with Mounting Set

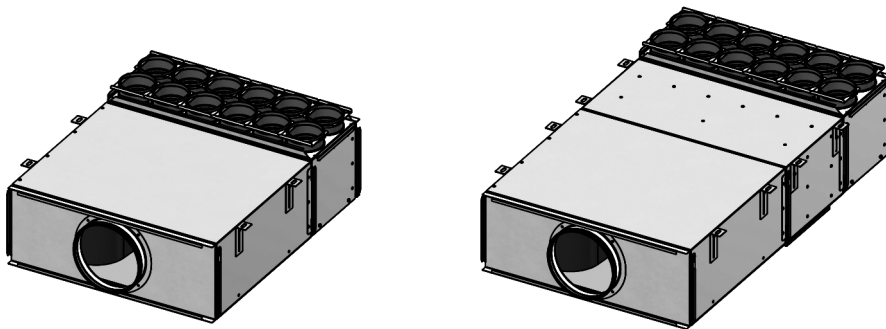


## Combination Scenarios

### Individual



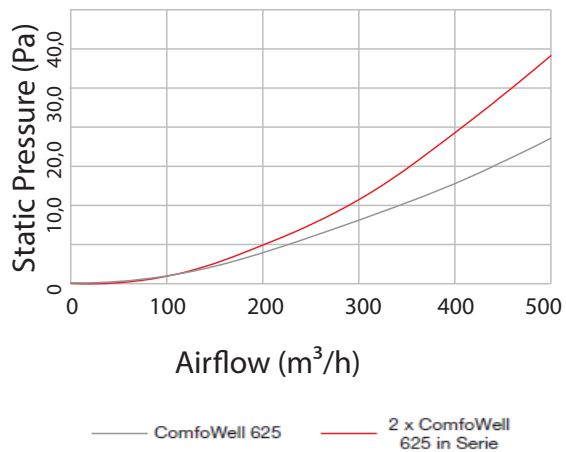
### Combined



Compact installation with ventilation unit

## Pressure

ComfoWell Attenuator CW-S625  
with End Plate CW-P - DN180





## Acoustic Performance

1x End plate CW-P625 + 1x Attenuator CW-S625 + 1x End plate CW-P625 or Mounting plate CW-M625

### Acoustic Performance with attenuator\*

Frequency [Hz]	63	125	250	500	1000	2000	4000	8000
[db]	3,0	8,9	13,7	18,7	12,0	18,6	14,6	12,9

1x End plate CW-P625 + 2x Attenuator CW-S625 + 1x End plate CW-P625 or mounting plate CW-M625

### Acoustic Performance with attenuator\*

Frequency [Hz]	63	125	250	500	1000	2000	4000	8000
[db]	9,2	17,0	23,4	23,8	21,0	34,2	26,4	22,6

\* Acoustic Performance measured according to EN ISO 7235 (pink noise)