



INSTALLATION GUIDE

Issue 1

CONTENTS

- | | | |
|----|--------------|---|
| 1. | Components | 2 |
| 2. | Installation | 3 |

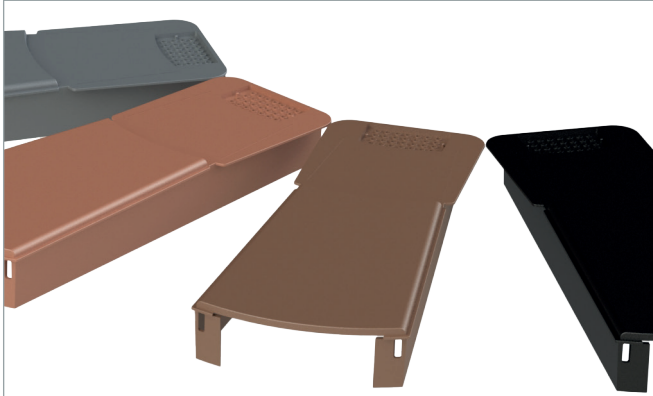
If in doubt at any stage

Please contact our Customer Care Team for additional support or advice

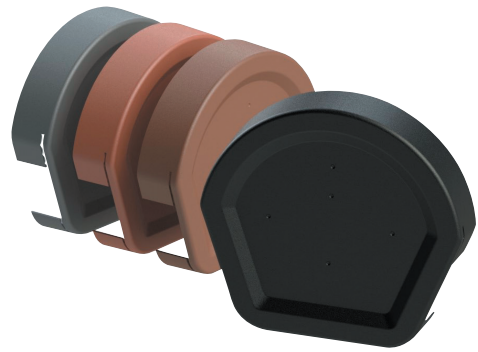


0333 321 2353

EUROVERGE COMPONENTS



Verge units



Half round ridge cap



Angled ridge caps

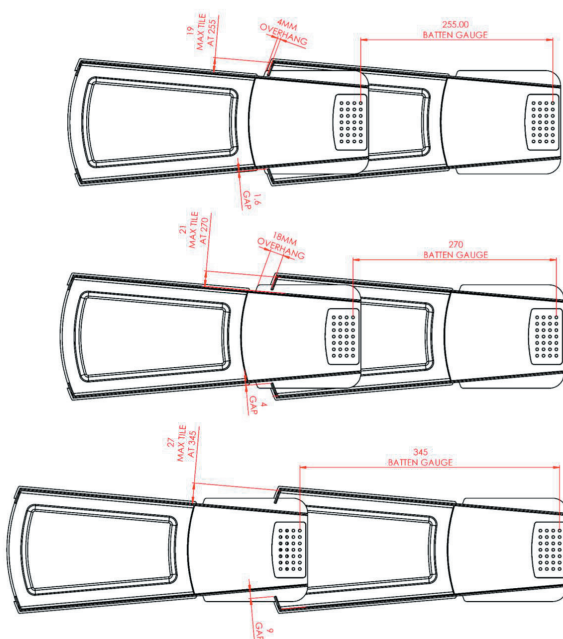


Blanking plate



Starter unit

VERGE BATTEN POSITIONS



Euroverge is compatible with Concrete Roof Tiles.
Available in Black, Anthracite Grey, Brown or Terracotta.

Please note:

Euroverge is not suitable for pitches less than 12.5° or greater than 60°.

EUROVERGE SYSTEM INSTALLATION

1.0

Eurocell Euroverge is suitable for both new build installations and refurbishment.

For new build ensure the tile battens project a minimum of 40mm from the fascia bargeboard or masonry.

On refurbishment roofs please inspect the battens to ascertain they are sound and will be suitable to take a screw or nail without splitting. They should protrude a minimum of 40mm from the tile bedding mortar. If this not the case, it will be necessary to fit a counter batten running the whole length of the roof from eaves to ridge. This should be fixed securely to the masonry wall or fascia bargeboard. The batten should have a minimum thickness of 40mm.

2.0



Take the starter cap and position it within the first verge unit. Position the assembled unit over the first eave tile. Mark the position of the starter cap.

Carefully remove the assembled unit and fix the eaves starter cap in the marked position with either a screw or nail.

3.0



Place the first verge unit over the starter cap. Slide the verge unit towards the ridge until it engages securely with the starter cap. Ensure a snug fit around the roof tile.

Select a suitable hole in the verge fixing area (middle of batten) and mechanically fix using either a screw or nail.



4.0



Place the next verge unit over the fixed verge, and again slide towards the ridge ensuring a snug fit around the next roof tile, then mechanically fix to the batten as previously. Repeat until you reach the apex.

5.0



On the last verge before the apex it is recommended to fit the verge fix area blanking cap this will create an aesthetically pleasing finish.

Complete the other side of the roof in the same manner.



6.0

At the ridge, fit the ridge cap over the ridge tile and verge units ensuring a snug fit. Mechanically fix the ridge cap into the ridge battens / top tile batten using a colour matched Euronail.





Please contact our Customer Care Team for additional support or advice:



0333 321 2353



eurocell.co.uk/technical-hub

eurocell.co.uk

