

# dales collection

## COMPOSITE DOORS



## INSTALLATION GUIDE

Issue 3

## CONTENTS

1. Survey information	2
– Door measurements	
– Fan light and side light options	
– Minimum / maximum sizes	
2. Pre Installation	6
3. Installation	10
4. Thermal movements	15
5. Bowed door	16
6. Guarantee	17
7. Post Installation	18
8. Care and maintenance	19

### If in doubt at any stage

Please contact our Customer Care Team for additional support or advice.



**0333 321 2353**

Note: An installation video is also available on the Eurocell website.

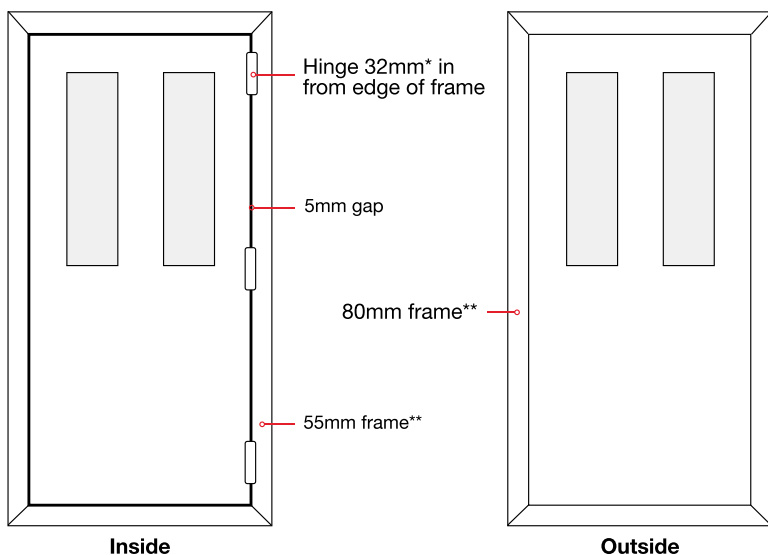
**eurocell**

# SURVEY INFORMATION



## Door measurements

Example shows EWS031 standard outerframe



\* When using EWS032, intermediate hinges are set 17mm in from the edge of the outer frame

\*\* When using EWS032, sizes are 15mm smaller on both internal and external faces

### Interior door leaf

Leaf width = overall door width less 120mm

### Exterior door leaf

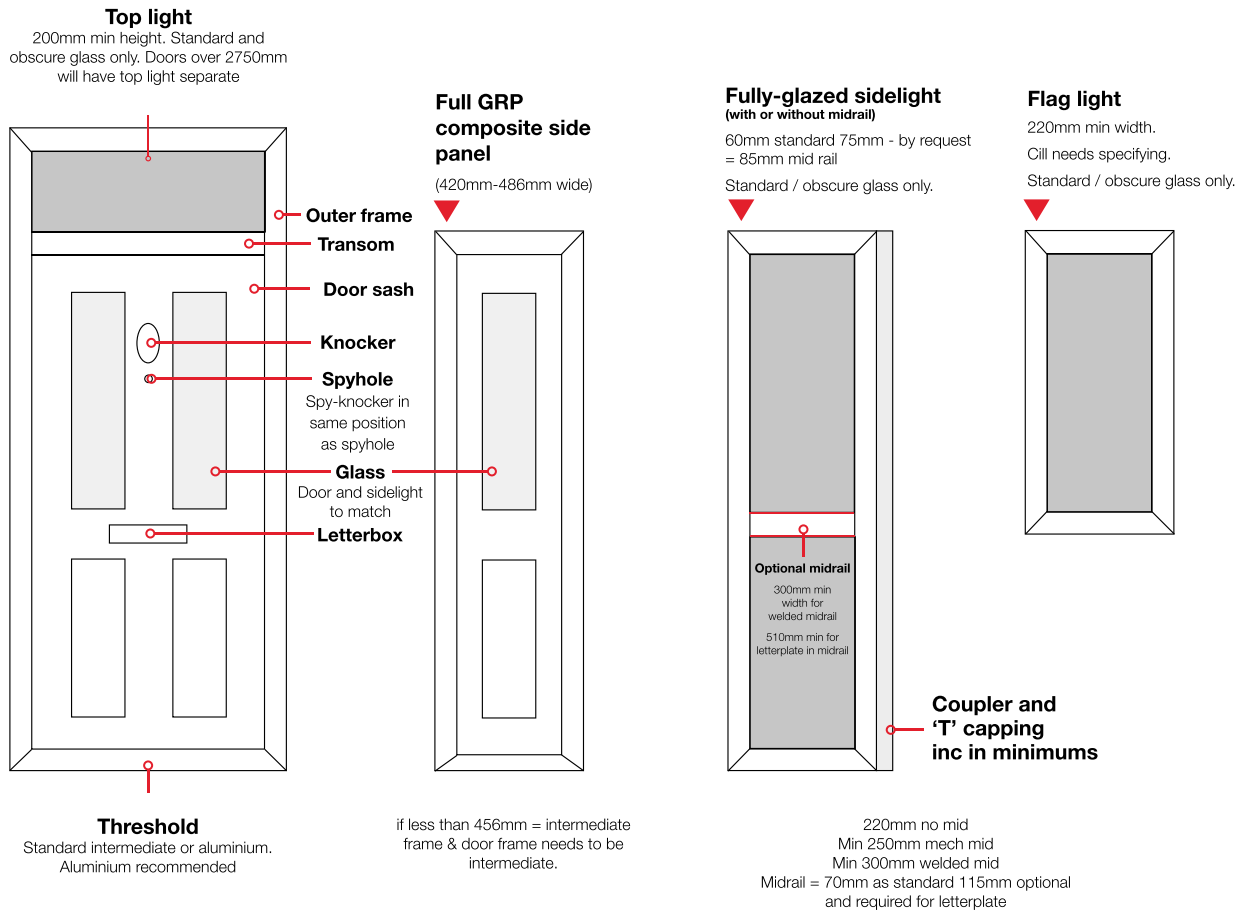
Opening width = overall door width less 180mm

When open at 90°, the door edge protrudes 20mm into the opening



## Fan light and side light options

(Available glazed and unglazed)



# MIN & MAX DOOR SIZES

## CHART A

### STANDARD LOCK DOORS

THE **BIRCHOVER**, THE **BRASSINGTON**, THE **BRETTON**,  
THE **BUXTON**, THE **CHELMORTON**, THE **LITTON**,  
THE **MALHAM**, THE **MIDDLETON**, THE **THORPE** (GLAZED/SOLID),  
THE **WIRKSWORTH**,

Slim Frame		Standard Frame	
Width	Height	Width	Height
Min	Max	Min	Max
800	1003	1930	2078
830	1033	1945	2093
800	1003	1930	2078
830	1033	1945	2093
800	1003	1925	2076
830	1012	1940	2088
800	1003	1955	2103
830	1033	1955	2118
800	1003	1970	2118
830	1033	1970	2133

### CYLINDER PULL LOCK DOORS

THE **BIRCHOVER**, THE **BRETTON**, THE **LITTON**, THE **MALHAM**  
THE **MIDDLETON** (GLAZED/SOLID)

Slim Frame		Standard Frame	
Width	Height	Width	Height
Min	Max	Min	Max
810	1003	1930	2078
840	1033	1945	2093
810	1003	1930	2078
840	1033	1945	2093
810	1003	1925	2076
840	1012	1940	2088
810	1003	1955	2103
840	1033	1955	2118
810	1003	1970	2118
840	1033	1970	2133

## CHART B

### STANDARD LOCK DOORS

THE **ASHBOURNE**, THE **BRADBOURNE**, THE **CHATSWORTH**,  
THE **CROMFORD**, THE **HATHERSAGE**, THE **NEWHAVEN** (GLASS  
CENTRE/SOLID), THE **MIDDLETON** (HALF GLAZED), THE **MILLDALE**,  
THE **PILSLEY**, THE **WINSTER**

Slim Frame		Standard Frame	
Width	Height	Width	Height
Min	Max	Min	Max
835	1003	1930	2078
865	1033	1945	2093
835	1003	1930	2078
865	1033	1945	2093
835	1003	1925	2076
865	1012	1940	2088
835	1003	1955	2103
865	1033	1955	2118
835	1003	1970	2118
865	1033	1970	2133

### CYLINDER PULL LOCK DOORS

THE **BRASSINGTON**, THE **NEWHAVEN** (GLASS CENTRE/SOLID),  
THE **THORPE** (GLAZED/SOLID)

Slim Frame		Standard Frame	
Width	Height	Width	Height
Min	Max	Min	Max
840	1003	1930	2078
870	1033	1945	2093
840	1003	1930	2078
870	1033	1945	2093
840	1003	1925	2076
870	1012	1940	2088
840	1003	1955	2103
870	1033	1955	2118
840	1003	1970	2118
870	1033	1970	2133

## CHART C

### STANDARD LOCK DOORS

THE **ELTON**, THE **HARTINGTON** (GLAZED/SOLID)

Slim Frame		Standard Frame	
Width	Height	Width	Height
Min	Max	Min	Max
853	1003	1930	2078
883	1033	1945	2093
853	1003	1930	2078
883	1033	1945	2093
853	1003	1925	2076
883	1012	1940	2088
853	1003	1955	2103
883	1033	1955	2118
853	1003	1970	2118
883	1033	1970	2133

### CYLINDER PULL LOCK DOORS

THE **ASHBOURNE**, THE **BRADBOURNE**, THE **CHELMORTON**,  
THE **CHATSWORTH**, THE **CROMFORD**, THE **ELTON**,  
THE **HARTINGTON** (GLAZED/SOLID), THE **HATHERSAGE**,  
THE **MIDDLETON** (HALF GLAZED), THE **MILLDALE**, THE **PILSLEY**,  
THE **WINSTER**, THE **WIRKSWORTH**

Slim Frame		Standard Frame	
Width	Height	Width	Height
Min	Max	Min	Max
875	1003	1930	2078
905	1033	1945	2093
875	1003	1930	2078
905	1033	1945	2093
875	1003	1925	2076
905	1012	1940	2088
875	1003	1955	2103
905	1033	1955	2118
875	1003	1970	2118
905	1033	1970	2133

CHART D		STANDARD LOCK DOORS								CYLINDER PULL LOCK DOORS							
		THE NEWHAVEN (GLASS LEFT/RIGHT)								THE NEWHAVEN (GLASS LEFT/RIGHT)							
		Slim Frame				Standard Frame				Slim Frame				Standard Frame			
		Width		Height		Width		Height		Width		Height		Width		Height	
		Min	Max	Min	Max	Min	Max	Min	Max	Min	Max	Min	Max	Min	Max	Min	Max
Aluminium Threshold	Part M	855	1003	1930	2078	885	1033	1945	2093	890	1003	1930	2078	920	1033	1945	2093
	Low	855	1003	1930	2078	885	1033	1945	2093	890	1003	1930	2078	920	1033	1945	2093
	Open out	855	1003	1925	2076	885	1012	1940	2088	890	1003	1925	2076	920	1012	1940	2088
PVC-U Threshold	Low	855	1003	1955	2103	885	1033	1955	2118	890	1003	1955	2103	920	1033	1955	2118
	Standard	855	1003	1970	2118	885	1033	1970	2133	890	1003	1970	2118	920	1033	1970	2133

SIDE PANELS									
		THE BRADBOURNE, THE CHATSWORTH, THE NEWHAVEN							
		Slim Frame				Standard Frame			
		Width		Height		Width		Height	
		Min	Max	Min	Max	Min	Max	Min	Max
Dimensions		420	456	1936	2119	450	486	1966	2149

Including aluminium coupler (10mm)

# PRE-INSTALLATION CHECKLIST



## PRE-INSTALLATION CHECK



### Please see to the right for required check list

Prior to removing the existing door the size, type and condition of all doorsets should be checked against both original order size and the actual aperture.

Care should be taken to examine the Door leaf and frame for damage prior to installation as no responsibility can be accepted once the door has been installed.

The door-set specification including hardware, glazing and door style should be checked against the order acknowledgement. Before discarding any packaging, check for any components and check that all ancillary

components are accounted for. Loose components are handles, hinge caps, cill end caps, Thumbturn cylinder, numerals door knobs etc.

### Side/Top/Wing lights/Combination top light frames

These are supplied temporary glazed and it is expected that they are deglazed, fixings installed and reglazed.

Correct coupling of frames using the aluminium structural coupler is essential and is shown in detail at the bottom of page 9, quick grip clamps should be used to keep frames tight together while inserting bay post fixings.

## PRE-INSTALLATION CHECKLIST

<input type="checkbox"/>	Door set is as ordered	<input type="checkbox"/>	Handles as specified in ancillary pack
<input type="checkbox"/>	Door set will fit opening allowing for levelling	<input type="checkbox"/>	Keys screwed to frame for Key/key
<input type="checkbox"/>	No visible damage to slab or frame	<input type="checkbox"/>	Hinge caps in ancillary pack
<input type="checkbox"/>	No cracks to welds	<input type="checkbox"/>	Thumbturn cylinder (if requested) in ancillary pack
<input type="checkbox"/>	Glass type as specified	<input type="checkbox"/>	Cill end caps (if applicable) in ancillary pack
<input type="checkbox"/>	No cracks , scratches to glass	<input type="checkbox"/>	Pull Knob (if requested) in ancillary pack
<input type="checkbox"/>	Loose cill is correct length and colour	<input type="checkbox"/>	Numerals (if requested) in ancillary pack

## IMPORTANT INFO



Solvents and abrasive cleaners will damage the surface finish so should not be used in any circumstances. See care and maintenance information on page 20 for guidance.

The hinges are adjustable but are only for minor corrections and will not compensate for incorrect installation.

After removal of the old door the opening must be thoroughly cleaned and the door leaf must be protected from falling debris during installation.

### **Please Note:**

The code of practice for installation as issued by the British Plastics Federation should be complied with at all times. Failure to install your door set and all associated items in strict accordance with these instructions may invalidate any future warranty claim. Select fixings that are appropriate for the substrate the frame is to be fitted to, this installation guide assumes substrate is brick or concrete block; for timber frame buildings refer to system provider's detail for recommended fixings.



# PRE-INSTALLATION



## 1.1

### **Please take the following into account before starting the installation**

Doorsets should be installed using the air gaps between the door leaf and frame as a guide, there should be an equal 4-5mm across the head and down both sides. Cleats/straps and Fisher type screw/plug fixings are not suitable, self-drilling type fixings (Rapier) should be used and the frame should be pilot drilled prior to drilling brickwork.

Minimum fixing lengths

Large outer 80mm Frame = 120mm

Intermediate outer 65mm Frame = 100mm

The fixing length should be increased if gaps between frame and brickwork are more than 5-10mm

## IMPORTANT INFO

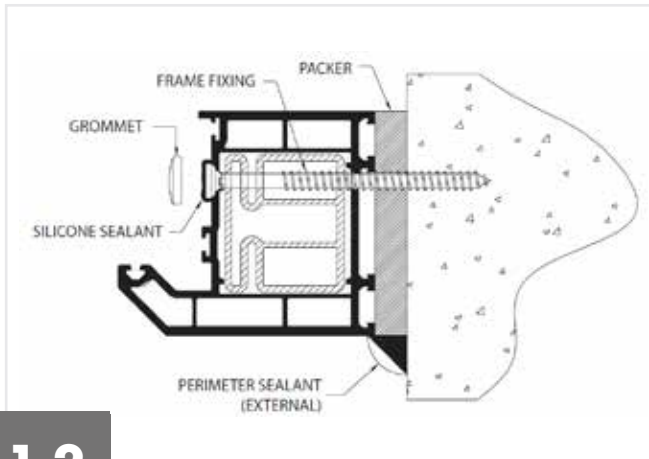


The frame should never be pushed tight back to the plaster line as this can lead to the door being fitted in twist, always allow 10mm clearance for in/out frame adjustment.

Care should be taken when propping the door leaf to achieve the first fixing, timber should be used to avoid chipping of the bottom edge.

All measurements are a guide only and care should be taken to avoid mortar joints as all fixings need to be secure. Expanding foam is not a substitute as it will not support the weight of a door leaf.





## 1.2

### Fixing Positions Recommended-

Generally, all three sides of the frame shall be secured, however it is understood that dependant on the lintel used at the head, fixing at this point is not always possible. There should be minimum of 6no fixing points to each jamb, with each fixing point being above and below a hinge or keep position. Corner fixings should be maximum 150mm away from the external corner. Intermediate fixings should be at centres no greater than 450mm.

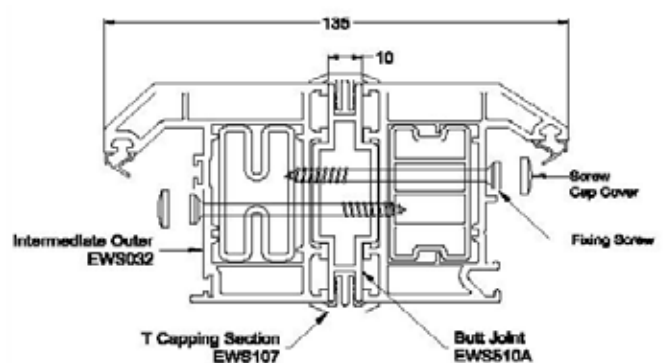
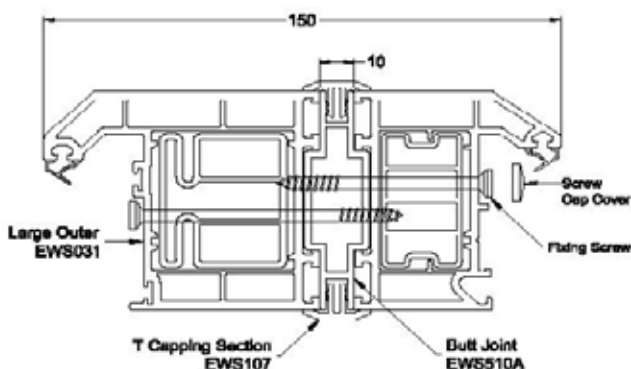


## 1.3

### Fixing Positions Recommended-

#### Fixing position detail Side/Top/ Wing lights/ GRP side panels (if supplied)

These should be checked for size and damage prior to installation as no responsibility can be accepted once installed. A 10mm aluminium coupler is supplied, either EWS 510A (as drawing) or AE10) and this should be fixed as below. If you supply your own a suitable structural aluminium coupler must be installed, failure to do so will invalidate the warranty. In all instances fixings used should be bay post fixings to suit profile depth, quick grip clamps should be used at each fixing point to ensure frames do not distort.



Note: Screws to be fixed 100mm from each corner and a maximum of 300mm centers.

# INSTALLATION

## DOOR AND FRAME

### 2.1

The cill/aluminium threshold should be bedded onto the brickwork/stone cill using silicone ensuring it does not block the drain holes in the threshold.

Once the threshold/cill is level raise the hinge side leg/jam using a 5mm packer.

Install the hinge side of the frame plumb and level using a 6ft level/straight edge ensuring that the frame is packed (if required) to allow the head to be fitted level. Ensuring the hinges are centre, make sure you have a 4-5mm equal air gap between door leaf and frame from top to bottom.





## 2.2

Install your first fixing underneath the top hinge. Place a 5mm packer as close to the head as possible between the frame and the brickwork. This will stop the frame being pulled over and the door sash dropping.

**The use of a level/straight edge is now no longer required.**



## 2.3

Second fix should be placed underneath the bottom hinge making sure the hinge side leg is plum and level using packers where required to prevent any twisting.

## 2.4

Install two fixings 100mm above and below the centre keep on the lock side ensuring that the frame is square in the aperture i.e. it is not twisting the hinge side and ensuring there is a 4-5 mm equal air gap between the door leaf and frame.

The remaining fixings can be installed mirroring the hinge side. You should now have 6 fixings either side, one above and below each hinge and keep.



## 2.5

Close the door and check that the door leaf is touching the gasket from the centre keep to the top of the door and then mark the brickwork. Open the door and install the top fixing just above the top keep, using the mark as a guide, again ensuring there is a 4-5 mm air gap Repeat the above for the bottom fixing but 50mm below the keep. Once the operation of the door and the air gaps have been checked the remaining fixings can be installed.



## 2.6

Expanding foam should now be applied between the frame and brickwork ensuring only enough is used to avoid distorting the frame when it expands. Once the foam has dried it can be cut away and perimeter sealing can be carried out. Ensure the frame is free from dust and debris before applying silicone. Do not seal across the front of the aluminium threshold as the drain holes are concealed behind the front ramp.

# INSTALLATION

## HARDWARE

### HANDLES & KEEPS



#### Important information

Lever type handles and keeps should only ever be fitted/adjusted using hand held screwdrivers, **Cordless/Torque drivers must not be used.**

### NUMERALS



If Numerals have been supplied the screw holes should be marked and pilot drilled using a 2mm drill bit.

If installing your own numerals/fixings they should be high quality exterior grade. Steel plated numerals and fixings will rust and damage the surface of the door.



## ESCUTCHEONS



These should be fitted using the screws provided and pilot drilled using a 2mm drill bit. Never drill more than 10mm into the door leaf as damage to the lock can occur if you drill deeper.

## DOOR KNOBS



Single fitted lock side can be screwed to door using plate supplied pilot drilling with a 1.5mm bit. Bolt will need to be cut to attach to handle/plate.

Single/double centre fixed must be bolted through the door. 8mm drill bit required and bolt will need to be liquid nailed into knob/nut, **do not over tighten** as this will compress the foam core and indent the skin.

## ADJUSTMENTS

Failure to adjust the keeps correctly after installation can allow thermal movement in the door leaf on warm days and may cause locking issues.

The latch plate on the centre keep should now be adjusted so that the door closes on the latch without using excessive force, the sash should compress the gasket slightly, not clamp it.



Loosen the adjuster plate by turning the screws anti clockwise one/two turns maximum. Move the latch plate in 1 to 2mm and re tighten screws, close the door using one finger against the door leaf, it should latch easily without any 'rattle'. If it will not close, back the plate off slightly, if it 'rattles' move plate further in and carry out check again.

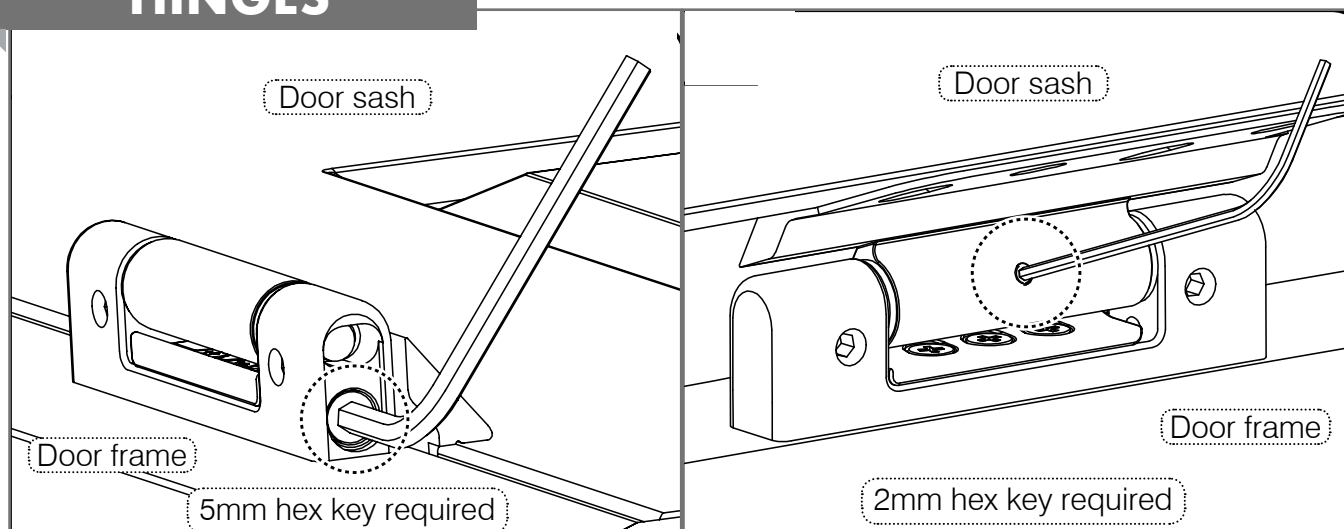


The top and bottom keeps can now be adjusted in the same way but the hooks should hit the plates so that they just pull the sash into the gasket slightly.

# INSTALLATION

## HARDWARE

### HINGES



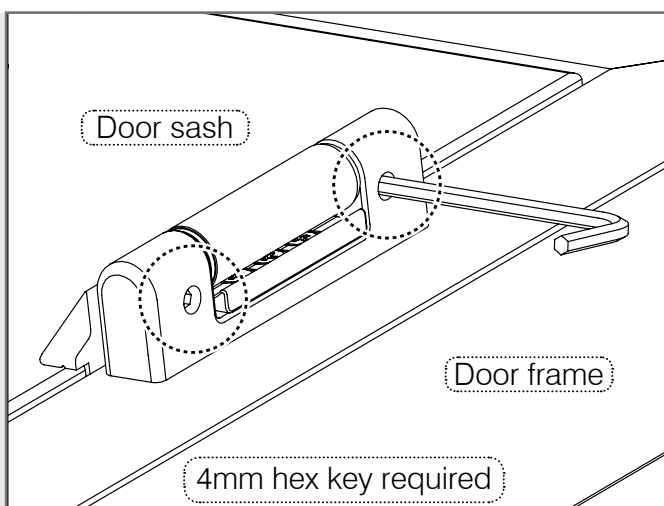
#### Vertical Adjustment

For vertical adjustment, insert a 5mm hex key into the vertical adjuster screw located at the top of the hinge. This screw allows up to 4mm of upwards adjustment. Adjust all hinges equally and fit the end caps.

Open door and using a 2mm hex key, tighten security screw on all hinges.

#### Lateral Adjustment

For lateral adjustment, insert a 4mm hex key into the lateral adjuster screws, located on the side of the frame part. You will need to adjust both screws equally.



# POST-INSTALLATION CHECKLIST (FOR HOMEOWNER)

## POST INSTALLATION CHECKLIST

<input type="checkbox"/>	Door set installed plumb, square and vertical	<input type="checkbox"/>	Trims are installed correctly
<input type="checkbox"/>	Air gaps between slab and frame are 5mm	<input type="checkbox"/>	Sealant joints have smooth finish/ correct shape
<input type="checkbox"/>	No air gaps between door leaf and frame seal	<input type="checkbox"/>	No excess sealant on frame/ brickwork
<input type="checkbox"/>	No scraping/rubbing between hooks and keeps	<input type="checkbox"/>	Threshold/Sidelight drainage free from debris
<input type="checkbox"/>	Door locks and unlocks satisfactorily	<input type="checkbox"/>	Cill end caps in place and secure
<input type="checkbox"/>	Hinge pin locking screws have been tightened (with the door open they are in the rebate)	<input type="checkbox"/>	All Debris cleared away
<input type="checkbox"/>	Hinge caps have been fitted	<input type="checkbox"/>	This sheet has been left with the homeowner
<input type="checkbox"/>	Exposed faces free from damage		

## PRECAUTIONS

Your new door will need very little maintenance. The amount of cleaning and servicing required will be dependent on the location of the door, if it is on a main road, in a coastal area or in an industrialised area it will need more maintenance than a door that is installed in the countryside

- ▶ **DO NOT** use chemical cleaners
- ▶ **DO NOT** use bleach or solvent
- ▶ **DO NOT** use abrasive cleaners or scouring pads
- ▶ **DO NOT** use pressure washers or steam cleaners
- ▶ **DO NOT** apply any adhesives of any type of tack (Blu Tack is an adhesive)
- ▶ **DO NOT** allow to come into contact with sharp objects
- ▶ **DO NOT** hang ornaments on the door as they will scratch the surface in windy conditions
- ▶ **DO NOT** when opening the door care should be taken to avoid damaging the surface finish. Large bunches of keys, shopping bags etc. can scratch the surface and would not be covered under warranty.

When opening the door care should be taken to avoid damaging the surface finish. Large bunches of keys, shopping bags etc. can scratch the surface and would not be covered under warranty.



# CARE & MAINTENANCE

## CLEANING

### Door leaf (Part that opens) and furniture

This will need occasional cleaning and should only be done with warm soapy water (washing up liquid is suitable) and a soft lint free cloth. Once clean the furniture should be dried with a soft cloth.

Stainless steel hardware does require cleaning or the dust/dirt in the air will stick to the surface and if left can give the effect of pitting/rusting (known as Tea Staining).

### Frame

The frame should be cleaned with warm soapy water. For any stubborn stains, contact your local Eurocell branch for assistance.

### Glass

Clean with warm soapy water but care should be taken that the cloth used does not snag any lead design.

### Gasket

The gasket has a silicone lubricant applied and should need no maintenance other than a wipe with warm soapy water when cleaning the rest of the door.

### Threshold

The threshold should be kept clear of debris and should be cleaned with warm soapy water when cleaning the rest of the door. The channel between the two gaskets should be vacuumed occasionally to ensure the drain holes remain clear. The threshold should be stepped over when entering and leaving the building to avoid damaging the gaskets.

### Hinges

The hinges are maintenance free however when maintaining the lock, the top caps can be removed and a small amount of silicone spray can be applied to the pins.

### Locking Mechanism and Cylinder

The lock and cylinder will require occasional maintenance. Every 6 months is recommended but may be more often dependant on the area you live in.

With the door open lift the handle so the hooks are on show, check for dust and debris and clean if necessary. The hooks, latch and keeps in the door frame should then be lubricated using a lithium spray grease or silicone spray. Manipulate the handle several times and then lubricate again. **Do not use WD40® or other oils.**

The cylinder is supplied with 3 keys, should you require additional keys to be cut, a certified locksmith should be used as they will use genuine manufacturer's blanks. Other key cutting companies can use copy blanks and these can be of poor quality and cause the cylinder to fail. The cylinder should be lubricated every 6 months. Lubricate with lock graphite or graphite pencil. Apply this lubricant to the key only and work the key in and out of cylinder a few times. Never apply lubricant directly into the cylinder as this may cause the internal pins to stick. **Do not use WD40® or other oils.**

### Keeps

After a period of time the gasket on your door will compress and keep adjustment may be necessary. This can be done by loosening the screws top and bottom with a hand held screwdriver, moving the plate in 1-2mm and re-tightening.



Please contact our Customer Care for additional support or advice:



**0333 321 2353**



**[eurocell.co.uk/technical-hub](https://eurocell.co.uk/technical-hub)**

Note: An installation video is also available on the Eurocell website.

**[eurocell.co.uk](https://eurocell.co.uk)**

