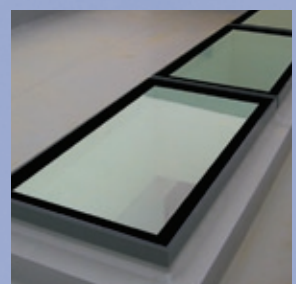
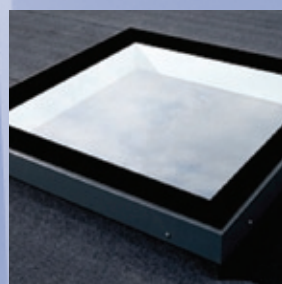
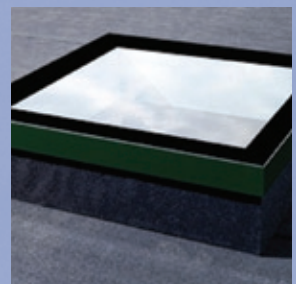
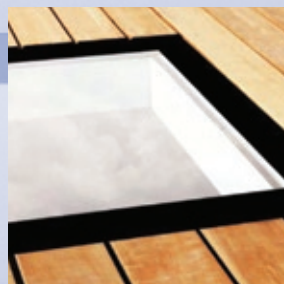
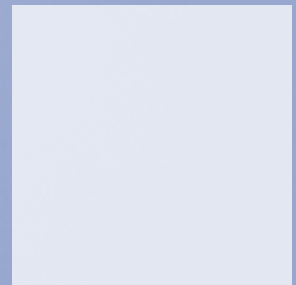
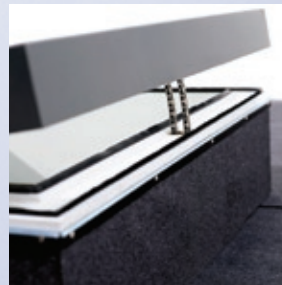
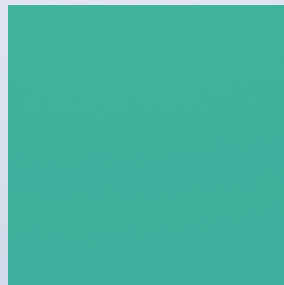


**more choice, better prices.**







# The UK's Leading Supplier of Rooflights, Skylights and Smoke Vents.

## The National Domelight Company

The National Domelight Company are specialist suppliers of domelights, rooflights, skylights and smoke vents, to roofing contractors and builders, to developers of commercial and residential property, and to private homeowners.

Our family-run company has been successfully trading for over 30 years and our UK-based sales team has more than 100 years of rooflight and skylight knowledge between them. You can trust us to know what we are talking about and to give you the best advice and guidance to find the right rooflight for you.

## Why choose the National Domelight Company?

### • Widest choice

We are the UK's leading supplier of rooflights and as a result we can supply you with any size, shape and material of rooflight, and with any combination of upstands and accessories, that you will ever need – *and all at the best trade prices.*

### • No more waiting

We deliver a first class service and our large warehouse and stocks mean that you won't have to wait long for your order. We can deliver most stock units, direct to site, within 72 hours. Our **FREE nationwide delivery** service means your rooflight will be safely delivered at your convenience – just when you need it.

### • Best quality

Our prices are competitive yet we still deliver industry leading quality and service in everything we do. Guaranteed.

### • Dedicated support

We have been supplying the roofing industry for decades and to help you we provide useful resources at [www.nationaldomes.com](http://www.nationaldomes.com) and CAD downloads to incorporate into your digital plans. Just call our **Technical Support Team on 01276 451555** for practical advice and support, no matter what you need.

Don't just take our word for it – Put us to the test, let us quote your next job and see just how much you could save! We guarantee excellent products, at sensible prices.

## Our guarantee of quality

All rooflights and skylights supplied by The National Domelight Company have been fully tested before they are added to our portfolio. This ensures you can always rely on our industry leading quality no matter what your requirement.

## Protecting the environment

The National Domelight Company is fully aware of the effects that the construction industry can have on the environment. We work hard to ensure that our business, sourcing and logistics processes have a minimal effect on the environment, and that our products have a reasonable lifespan and can be recycled wherever possible.

## Why we need natural light

There is no denying that natural daylight in a room can make all the difference to its occupants. Rooflights are the best way of introducing natural light and can provide up to three times more daylight than an equally-sized vertical window. People work better in naturally lit workspaces and natural lighting can have less of an environmental impact than artificial lighting.

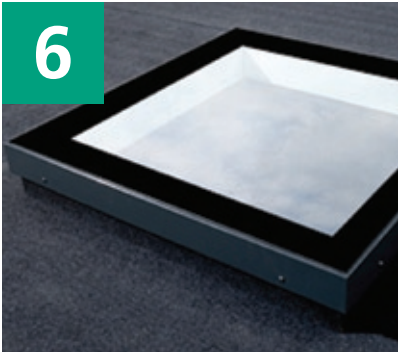
The National Domelight Company can advise on specific industry policies and regulations, and give guidance on introducing natural light into buildings.

## more choice, better prices.



# Contents Overview

6



Fixed Rooflights

7



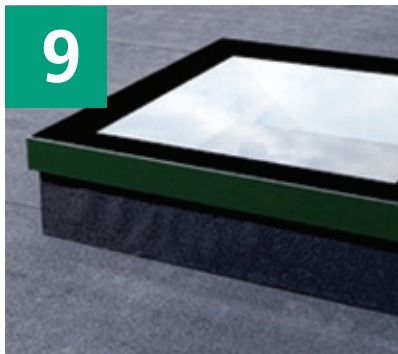
Electric Hinged  
Rooflights

8



Walk-On Rooflights

9



Eco Rooflights

10



Technical Services

11



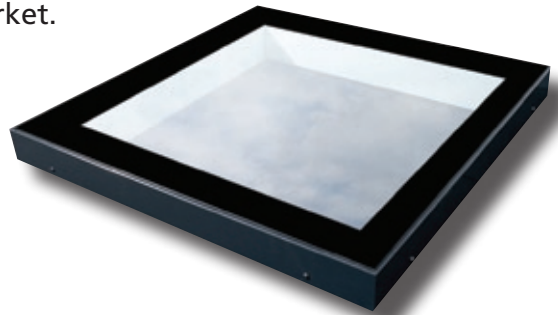
NBS Specification

# Glass Rooflights



Clearly the most advanced glass rooflight on the market.

Solarglaze glass rooflights offer the ultimate in style, security and safety combined with the highest quality and best value on the market. The latest design and manufacturing technologies ensure that your choice of a Solarglaze product will always be very highly energy efficient and aesthetically pleasing.



All Solarglaze rooflights come as a complete package with an insulated kerb contributing to class leading overall unit U values of 1.24 W/m<sup>2</sup>K as standard or as low as 0.87 W/m<sup>2</sup>K when using the Eco range, offering a genuine low carbon contribution to any building. The construction of a Solarglaze rooflight allows the maximum amount of natural light into a room improving the environment below, using a sealed 32mm Argon-filled double glazed glass unit as standard or a 32mm Krypton-filled triple glazed glass unit when using the Eco range.

Natural daylight has long been recognised as the most effective form of light, and Solarglaze rooflights are the most efficient means of providing daylight giving three times more daylight than an equally sized vertical window.

To us the finished product is just the end result of understanding customer needs and we pride ourselves on dedication to service. Offering fast competitive lead times on standard units we aim to find a solution to suit your needs.

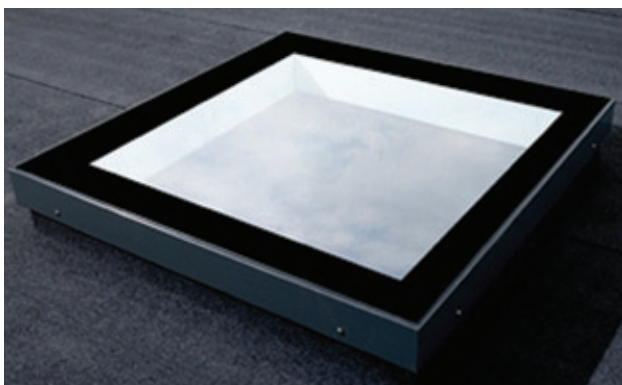


# Fixed Rooflights



Solarglaze fixed double glazed glass rooflights offer a flat glass construction which allows the largest possible amount of light to be brought into a room. With its sleek appearance and excellent thermal qualities it combines good aesthetics with impressive technical ability.

Solarglaze fixed rooflights are made of polyester powder-coated aluminium with an insulated timber kerb and a fully sealed 32mm double glazed unit.



## Key Features

- Low Profile
- 1.24 W/m<sup>2</sup>K U Value
- 32mm sealed double glazed unit
- Air tightness Class 4 [600pa]
- Noise reduction of 34 dB
- Can be installed on a flat roof at 4° up to a slope of 15°

## Solarglaze Fixed Rooflight Benefits

### Factory Glazed Frame

- Thermally broken to eliminate cold bridging and to help prevent condensation

### Standard Glass Specification

- Low-E insulated pane with a thickness of 32mm
- 8mm clear toughened outer pane, 16mm Argon-filled cavity and 8.4/8.8mm laminated Low-E inner pane
- Centre pane U value for the double glazed unit is 1.1 W/m<sup>2</sup>K and an overall unit U value of 1.24 W/m<sup>2</sup>K including insulated kerb
- 115mm silk screen printing along the edge for UV protecting the sealing

### Other Glass Options

- Solar Control glass – has a high light transmittance and reduces solar heat gain
- Other glass options available. Please contact The National Domelight Company with your requirements for more details

### Frame Finish

- Polyester powder-coated externally to RAL 7043 (Traffic Grey B)

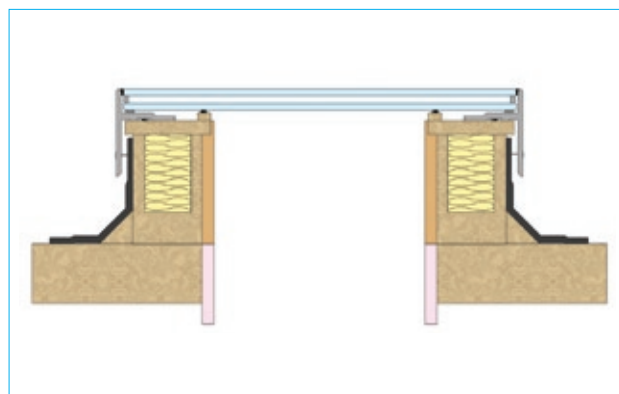
### Insulated Upstand

- 150mm supplied as standard, (300mm also available) high Rockwool-insulated timber kerb with inner and outer gasket pre-attached to aid air tightness
- Painted white on visible internal surfaces
- Plywood on the outer surface ready for under and top roofing felt

## Solarglaze Fixed Rooflight sizes

As well as the standard sizes shown, any non-standard size, ranging between 600 – 2000mm is also available on request. For more advice, please call our **Technical Support Team on 01276 451555**.

Finished Internal Size (mm)					
600 x 600	800 x 600	1000 x 600	1200 x 600	1500 x 600	2000 x 600
600 x 800	800 x 800	1000 x 800	1200 x 800	1500 x 800	2000 x 800
600 x 1000	800 x 1000	1000 x 1000	1200 x 1000	1500 x 1000	2000 x 1000
600 x 1200	800 x 1200	1000 x 1200	1200 x 1200	1500 x 1200	
600 x 1500	800 x 1500	1000 x 1500	1200 x 1500		
600 x 2000	800 x 2000	1000 x 2000			



Standard Kerb Detail

# Electric Hinged Rooflights

Solarglaze electric hinged double glazed glass rooflights offer a flat glass construction with a concealed chain operator built into the supplied upstand.

The unit comes complete with a control unit and wall-mounted switch as standard and has various accessories available including a rain sensor and rain/wind sensor.



## Key Features

- Low Profile
- 1.24 W/m<sup>2</sup>K U Value
- 32mm sealed double glazed unit
- Air tightness Class 4 [600pa]
- Noise reduction of 34 dB
- Can be installed on a flat roof at 4° up to a slope of 15°

## Solarglaze Electric Hinged Rooflight sizes

As well as the standard sizes shown, any non-standard size, ranging between 600 – 2000mm is also available on request. For more advice, please call our **Technical Support Team on 01276 451555**.

Finished Internal Size (mm)					
600 x 600	800 x 600	1000 x 600	1200 x 600	1500 x 600	2000 x 600
600 x 800	800 x 800	1000 x 800	1200 x 800	1500 x 800	2000 x 800
600 x 1000	800 x 1000	1000 x 1000	1200 x 1000	1500 x 1000	2000 x 1000
600 x 1200	800 x 1200	1000 x 1200	1200 x 1200	1500 x 1200	
600 x 1500	800 x 1500	1000 x 1500	1200 x 1500		
600 x 2000	800 x 2000	1000 x 2000			

## Solarglaze Electric Hinged Rooflight Benefits Factory Glazed Frame

- Thermally broken to eliminate cold bridging and to help prevent condensation

## Standard Glass Specification

- Low-E insulated pane with a thickness of 32mm
- 8mm clear toughened outer pane, 16mm Argon-filled cavity and 8.4/8.8mm laminated Low-E inner pane
- Centre pane U value for the double glazed unit is 1.1 W/m<sup>2</sup>K and an overall unit U value of 1.24 W/m<sup>2</sup>K including insulated kerb
- 115mm silk screen printing along the edge for UV protecting the sealing

## Other Glass Options

- Solar Control glass – has a high light transmittance and reduces solar heat gain
- Other glass options available. Please contact The National Domelight Company with your requirements for more details

## Electric Motor

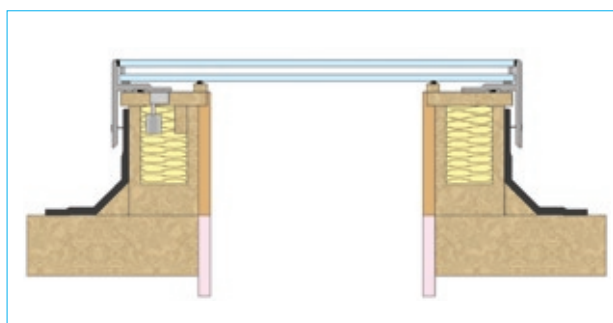
- 24v DC chain actuator(s) concealed within the supplied kerb
- Complete with a transformer and wall-mounted switch

## Frame Finish

- Polyester powder-coated externally to RAL 7043 (Traffic Grey B)

## Insulated Upstand

- 150mm supplied as standard, (300mm also available) high Rockwool-insulated timber kerb with inner and outer gasket pre-attached to aid air tightness
- Painted white on visible internal surfaces
- Plywood on the outer surface ready for under and top roofing felt



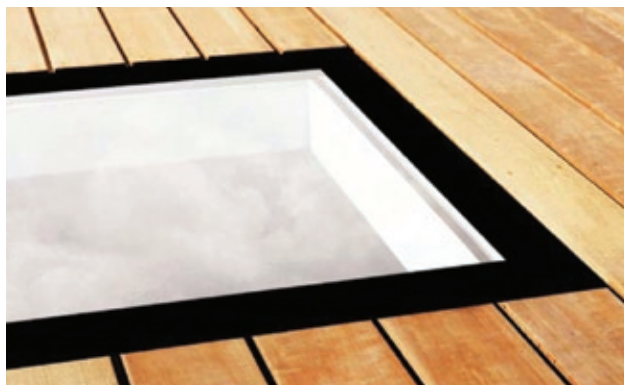
Standard Kerb Detail



# Walk-On Rooflights

Solarglaze Walk-On fixed double glazed glass rooflights have been designed specifically for roof terraces and areas requiring regular pedestrian use. The flat glass construction allows the largest possible amount of light to be brought into a room whilst offering all the benefits of Walk-On specification glass.

With its sleek appearance and excellent thermal qualities Solarglaze Walk-On rooflights combine good aesthetics with impressive technical ability.



## Key Features

- Low Profile
- Exceeds 1.24 W/m<sup>2</sup>K U Value
- 49.84mm sealed double glazed unit
- Air tightness Class 4 [600pa]
- Noise reduction exceeds 34 dB

## Solarglaze Walk-On Rooflight Benefits

### Factory Glazed Frame

- Thermally broken to eliminate cold bridging and to help prevent condensation

### Glass Specification

- Low-E insulated pane with a total thickness of 49.84mm
- 25.04mm clear toughened and heat strengthened outer pane consisting of a 6mm clear toughened heat strengthened float, 1.52mm laminate interlayer, 8mm clear heat strengthened float, 1.52mm laminate interlayer, 8mm clear heat strengthened float; a 16mm Argon-filled cavity; and a 8.8mm clear laminated Low-E inner pane
- Centre pane U value for the double glazed unit exceeds 1.1 W/m<sup>2</sup>K and an overall unit U value exceeds 1.24 W/m<sup>2</sup>K
- 115mm silk screen printing along the edge for UV protecting the sealing

### Frame Finish

- Polyester powder-coated externally to RAL 7043 (Traffic Grey B)

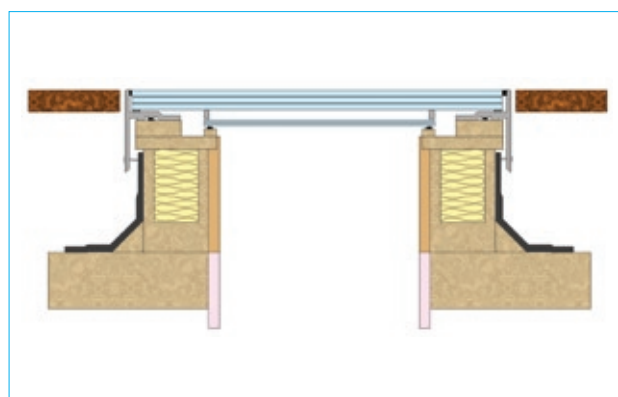
### Insulated Upstand

- 150mm supplied as standard, (300mm also available) high Rockwool-insulated timber kerb with inner and outer gasket pre-attached to aid air tightness
- Painted white on visible internal surfaces
- Plywood on the outer surface ready for under and top roofing felt

## Solarglaze Walk-On Rooflight sizes

As well as the standard sizes shown, any non-standard size, ranging between 600 – 2000mm is also available on request. For more advice, please call our **Technical Support Team on 01276 451555**.

Finished Internal Size (mm)					
600 x 600	800 x 600	1000 x 600	1200 x 600	1500 x 600	2000 x 600
600 x 800	800 x 800	1000 x 800	1200 x 800	1500 x 800	2000 x 800
600 x 1000	800 x 1000	1000 x 1000	1200 x 1000	1500 x 1000	2000 x 1000
600 x 1200	800 x 1200	1000 x 1200	1200 x 1200	1500 x 1200	
600 x 1500	800 x 1500	1000 x 1500	1200 x 1500		
600 x 2000	800 x 2000	1000 x 2000			



Standard Kerb Detail

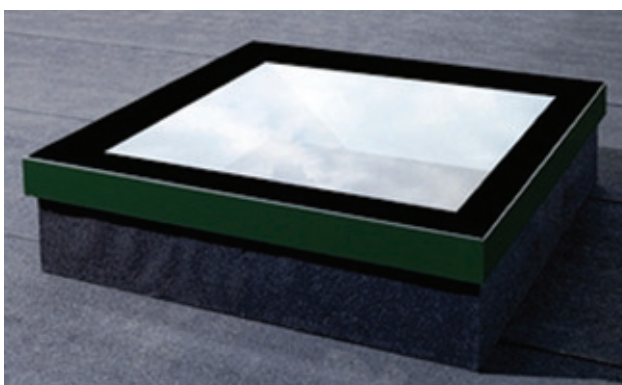


# Eco Rooflights



The Solarglaze Eco rooflight has been specifically designed with a class-leading overall U value of 0.87 W/m<sup>2</sup>K offering the architect and homeowner alike the ultimate in style and performance.

Built using the highest quality materials in mind throughout the design and manufacturing stages, makes the Solarglaze Eco rooflight a clear choice for those who want a rooflight that will not just meet, but exceed your expectations and requirements.



## Key Features

- Low Profile
- 0.87 W/m<sup>2</sup>K U Value
- 32.8mm sealed triple glazed unit
- Air tightness Class 4 [600pa]
- Noise reduction of 34 dB
- Can be installed on a flat roof at 4° up to a slope of 15°

## Solarglaze Eco Rooflight Benefits

### Factory Glazed Frame

- Thermally broken to eliminate cold bridging and to help prevent condensation

### Standard Glass Specification

- Triple glazed Low-E insulated pane with a thickness of 32.8mm
- 6mm clear toughened outer pane, 6mm Krypton-filled cavity, 4mm clear toughened middle pane, 8mm Krypton-filled cavity and an 8.8mm laminated Low-E inner pane
- 115mm silk screen printing along the edge for UV protecting the sealing

### Frame Finish

- Polyester powder-coated externally to RAL 6005 (Moss Green)

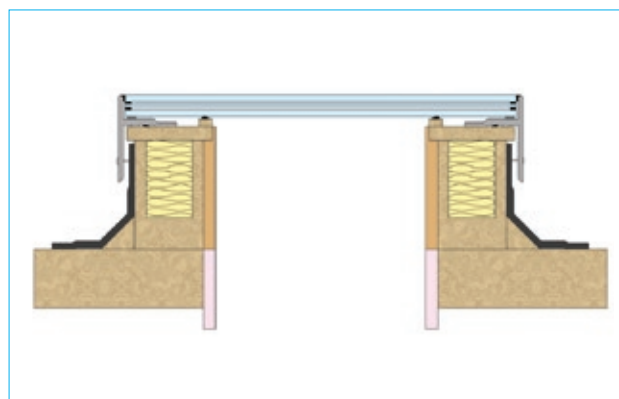
### Insulated Upstand

- 150mm supplied as standard, (300mm also available) high Rockwool-insulated timber kerb with inner and outer gasket pre-attached to aid air tightness
- Painted white on visible internal surfaces
- Plywood on the outer surface ready for under and top roofing felt

## Solarglaze Eco Rooflight sizes

As well as the standard sizes shown, any non-standard size, ranging between 600 – 2000mm is also available on request. For more advice, please call our **Technical Support Team on 01276 451555**.

Finished Internal Size (mm)					
600 x 600	800 x 600	1000 x 600	1200 x 600	1500 x 600	2000 x 600
600 x 800	800 x 800	1000 x 800	1200 x 800	1500 x 800	2000 x 800
600 x 1000	800 x 1000	1000 x 1000	1200 x 1000	1500 x 1000	2000 x 1000
600 x 1200	800 x 1200	1000 x 1200	1200 x 1200	1500 x 1200	
600 x 1500	800 x 1500	1000 x 1500	1200 x 1500		
600 x 2000	800 x 2000	1000 x 2000			



Standard Kerb Detail

# Technical Services

The National Domelight Company sales team is always available to assist you, from your initial enquiry through to after sales support. This includes help with specification writing, site surveys, budget costings, and fully detailed quotations.

## Health & Safety

(HSE) Health and Safety in Roof Work states that where rooflights are required, designers should consider:

- Specifying rooflights that are non-fragile
- Fitting rooflights designed to project above the plane of the roof and which cannot be walked on (these reduce the risk but they should be capable of withstanding a person falling onto them)
- Protecting rooflight, e.g. by means of mesh or grids fitted below or above the rooflight
- Specifying rooflights with a design life that matches that of the roof, taking account of the likely deterioration due to ultraviolet exposure, environmental pollution and internal and external building environment

## Man Safe

Man-safe is a term often used within the construction industry to mean that the product can withstand foot traffic. However, man-safe has no recognised definition and 'non-fragile' does not qualify a product to be used as a thoroughfare. Whilst glazing and other accessories may be designed to safely resist the impact of a human body falling against it, the wilful act of walking on any kind of roof glazing must be forbidden at all times.

The act of walking upon a glazed structure can cause microscopic damage that, in time, may have a detrimental effect upon the impact performance of the system. Walking upon glazing may encourage a practice that could lead to general disregard for the rating of said glazing, with catastrophic consequences.

## Handling & Storage

While all Solarglaze rooflights and associated products are suitably packaged to avoid damage care should be exercised when handling. For moving larger items, two or more people may be needed. All products should be stored flat at all times in dry conditions until installation.



## Condensation

Condensation occurs where warm moist air meets cold surfaces. As warm air rises, the risk of condensation forming at rooflight level is relatively greater than at a lower level. The risk can be minimised by specifying ventilated rooflights. However, because temperature and humidity levels are clearly beyond our control, no guarantee can be given against the formation of condensation.

Condensation can also occur when the room below has high humidity levels, for example during construction from new plaster or paintwork. However, once the humidity level in the room is restored to normal this condensation dissipates.

## Installation

All Solarglaze rooflights are supplied ready assembled and pre-drilled complete with security screw bolts and factory applied gaskets where applicable, and are delivered to site in protective packaging. Full instructions and fixings are included with all products, and should be carefully studied prior to installation.

## Guarantees

All Solarglaze rooflights, when installed on kerbs in accordance with manufacturer's instructions, are guaranteed against the effects of defective design, materials or construction for a period of five years from date of supply by National Domelight Company. Solarglaze rooflights have an expected life of at least 25 years, which would normally exceed the life of the roof waterproofing materials. All other items such as kerbs, ventilation systems, electrical components and other accessories are guaranteed for 12 months from date of supply by National Domelight Company.

## Solarglaze Fixed (Standard)

<b>Drawing Reference</b>	Solarglaze Fixed.
<b>Manufacturer</b>	National Domelight Company, Pyramid House, 52 Guildford Road, Lightwater, Surrey GU18 5SD Tel: 01276 451555 Fax: 01276 451533 Website: <a href="http://www.nationaldomes.com">www.nationaldomes.com</a> E-mail: <a href="mailto:info@nationaldomes.com">info@nationaldomes.com</a>
<b>Type</b>	Solarglaze Fixed.
<b>Glazing Details</b>	32mm Low-E sealed double glazed pane comprising an 8mm toughened float, 16mm Argon-filled TGI spacer and an 8.4/8.8mm laminated Low-E inner pane. 115mm wide silk screen printing along the perimeter for UV protection of the pane sealing.
<b>Frame/Sash</b>	Extruded aluminium alloy 6060. Thickness 5mm.
<b>Finish</b>	Polyester powder coated.
<b>Colour</b>	External aluminium sash - RAL 7043 (Traffic Grey B), Gloss 70%. Kerb - Painted white on visible surfaces.
<b>Kerb</b>	Supplied. 100mm wide constructed of 15mm thick plywood outer, 70mm thick Rockwool-insulated cavity, 0.2mm thick moisture membrane, 16mm thick MDF E1 quality inner. Pine internal structure supports 45x69mm, 17x34mm, 23x34mm, 8x23mm. 150mm high as standard (300mm optional).

## Solarglaze Electric Hinged (Standard Electric Hinged)

<b>Drawing Reference</b>	Solarglaze Electric Hinged.
<b>Manufacturer</b>	National Domelight Company, Pyramid House, 52 Guildford Road, Lightwater, Surrey GU18 5SD Tel: 01276 451555 Fax: 01276 451533 Website: <a href="http://www.nationaldomes.com">www.nationaldomes.com</a> E-mail: <a href="mailto:info@nationaldomes.com">info@nationaldomes.com</a>
<b>Type</b>	Solarglaze Electric Hinged.
<b>Glazing Details</b>	32mm Low-E sealed double glazed pane comprising an 8mm toughened float, 16mm Argon-filled TGI spacer and an 8.4/8.8mm laminated Low-E inner pane. 115mm wide silk screen printing along the perimeter for UV protection of the pane sealing.
<b>Frame/Sash</b>	Extruded aluminium alloy 6060. Thickness 5mm.
<b>Finish</b>	Polyester powder coated.
<b>Colour</b>	External aluminium sash - RAL 7043 (Traffic Grey B), Gloss 70%. Kerb - Painted white on visible surfaces.
<b>Kerb</b>	Supplied. 100mm wide constructed of 15mm thick plywood outer, 70mm thick Rockwool-insulated cavity, 0.2mm thick moisture membrane, 16mm thick MDF E1 quality inner. Pine internal structure supports 45x69mm, 17x34mm, 23x34mm, 8x23mm. 150mm high as standard (300mm optional).
<b>Electric Motor(s) Accessories</b>	24v DC chain actuator concealed within the supplied kerb. Complete with wall-mounted switch and control unit.

## Solarglaze Walk-On (Standard Walk-On)

<b>Drawing Reference</b>	Solarglaze Walk-On.
<b>Manufacturer</b>	National Domelight Company, Pyramid House, 52 Guildford Road, Lightwater, Surrey GU18 5SD Tel: 01276 451555 Fax: 01276 451533 Website: <a href="http://www.nationaldomes.com">www.nationaldomes.com</a> E-mail: <a href="mailto:info@nationaldomes.com">info@nationaldomes.com</a>
<b>Type</b>	Solarglaze Walk-On.
<b>Glazing Details</b>	49.84mm Low-E sealed double glazed unit comprising: Outer pane total thickness of 25.04mm (consisting of a 6mm clear toughened heat strengthened float, 1.52mm laminate interlayer, 8mm clear heat strengthened float, 1.52mm laminate interlayer, 8mm clear heat strengthened float). Internal void 16mm Argon-filled cavity with TGI "warm edge" spacer. Inner pane 8.76mm laminated (consisting of a 4mm clear float with Low-E coating, 0.76mm laminated interlayer and a 4mm clear float). 115mm wide silk screen printing along the perimeter for UV protection of the pane sealing.
<b>Frame/Sash</b>	Extruded aluminium alloy 6060. Thickness 5mm.
<b>Finish</b>	Polyester powder coated.
<b>Colour</b>	External aluminium sash - RAL 7043 (Traffic Grey B), Gloss 70%. Kerb - Painted white on visible surfaces.
<b>Kerb</b>	Supplied. 100mm wide constructed of 15mm thick plywood outer, 70mm thick Rockwool-insulated cavity, 0.2mm thick moisture membrane, 16mm thick MDF E1 quality inner. Pine internal structure supports 45x69mm, 17x34mm, 23x34mm, 8x23mm. 150mm high as standard (300mm optional).

## Solarglaze Eco (Standard)

<b>Drawing Reference</b>	Solarglaze Eco.
<b>Manufacturer</b>	National Domelight Company, Pyramid House, 52 Guildford Road, Lightwater, Surrey GU18 5SD Tel: 01276 451555 Fax: 01276 451533 Website: <a href="http://www.nationaldomes.com">www.nationaldomes.com</a> E-mail: <a href="mailto:info@nationaldomes.com">info@nationaldomes.com</a>
<b>Type</b>	Solarglaze Eco.
<b>Glazing Details</b>	32.8mm Low-E sealed triple glazed pane comprising a 6mm clear toughened outer pane, 6mm Krypton-filled cavity, 4mm clear toughened middle pane, 8mm Krypton-filled cavity and a 8.8mm clear laminated inner pane. 115mm wide silk screen printing along the perimeter for UV protection of the pane sealing.
<b>Frame/Sash</b>	Extruded aluminium alloy 6060. Thickness 5mm.
<b>Finish</b>	Polyester powder coated.
<b>Colour</b>	External aluminium sash - RAL 6005 (Moss Green). Kerb - Painted white on visible surfaces.
<b>Kerb</b>	Supplied. 100mm wide constructed of 15mm thick plywood outer, 70mm thick Rockwool-insulated cavity, 0.2mm thick moisture membrane, 16mm thick MDF E1 quality inner. Pine internal structure supports 45x69mm, 17x34mm, 23x34mm, 8x23mm. 150mm high as standard (300mm optional).



more choice, better prices.

**Pyramid House  
52 Guildford Road  
Lightwater  
Surrey  
GU18 5SD**

Tel: 01276 451555  
Fax: 01276 451533  
Email: [info@nationaldomes.com](mailto:info@nationaldomes.com)  
[www.nationaldomes.com](http://www.nationaldomes.com)



[www.twitter.com/National\\_Domes](https://www.twitter.com/National_Domes)



RIBA

