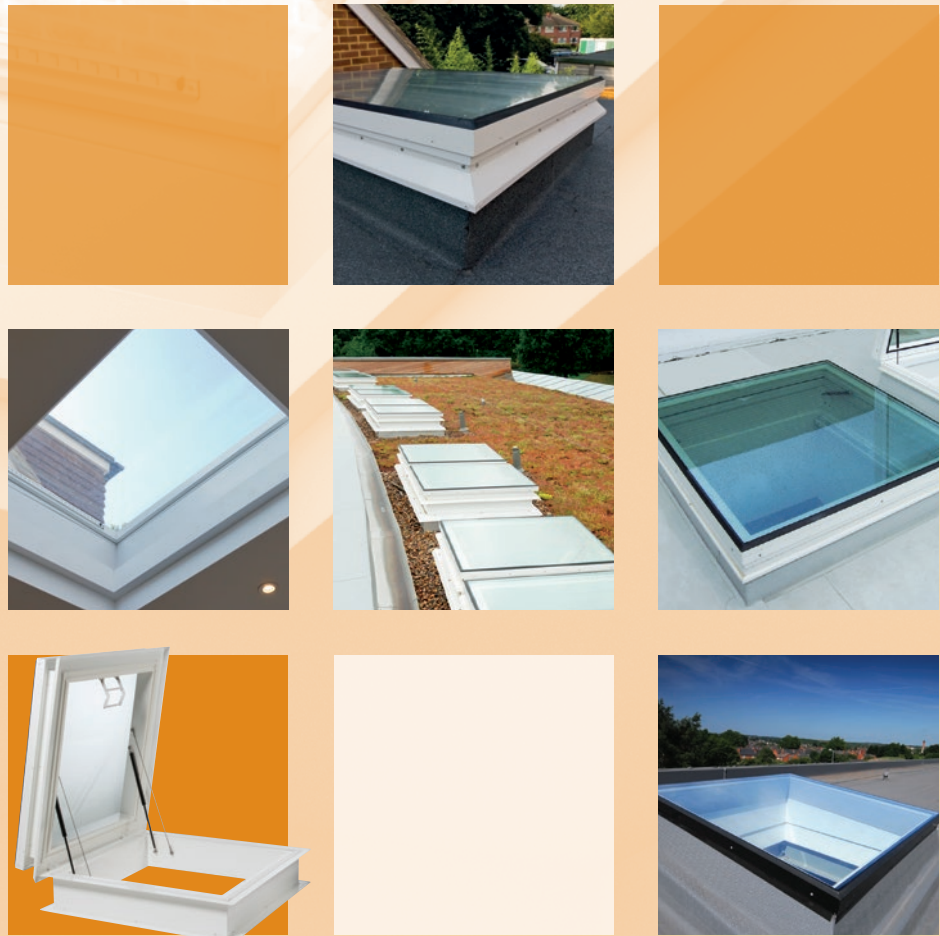


more choice, better prices.







The UK's Leading Supplier of Rooflights, Skylights and Smoke Vents.

The National Domelight Company

The National Domelight Company are specialist suppliers of domelights, rooflights, skylights and smoke vents, to roofing contractors and builders, to developers of commercial and residential property, and to private homeowners.

Our family-run company has been successfully trading for over 30 years and our UK-based sales team has more than 100 years of rooflight and skylight knowledge between them. You can trust us to know what we are talking about and to give you the best advice and guidance to find the right rooflight for you.

Why choose the National Domelight Company?

• Widest choice

We are the UK's leading supplier of rooflights and as a result we can supply you with any size, shape and material of rooflight, and with any combination of upstands and accessories, that you will ever need – *and all at the best trade prices.*

• No more waiting

We deliver a first class service and our large warehouse and stocks mean that you won't have to wait long for your order. We can deliver most stock units, direct to site, within 72 hours. Our **FREE nationwide delivery** service means your rooflight will be safely delivered at your convenience – just when you need it.

• Best quality

Our prices are competitive yet we still deliver industry leading quality and service in everything we do. Guaranteed.

• Dedicated support

We have been supplying the roofing industry for decades and to help you we provide useful resources at www.nationaldomes.com and CAD downloads to incorporate into your digital plans. Just call our **Technical Support Team on 01276 451555** for practical advice and support, no matter what you need.

Don't just take our word for it – Put us to the test, let us quote your next job and see just how much you could save! We guarantee excellent products, at sensible prices.

Our guarantee of quality

All rooflights and skylights supplied by The National Domelight Company have been fully tested before they are added to our portfolio. This ensures you can always rely on our industry leading quality no matter what your requirement.

Protecting the environment

The National Domelight Company is fully aware of the effects that the construction industry can have on the environment. We work hard to ensure that our business, sourcing and logistics processes have a minimal effect on the environment, and that our products have a reasonable lifespan and can be recycled wherever possible.

Why we need natural light

There is no denying that natural daylight in a room can make all the difference to its occupants. Rooflights are the best way of introducing natural light and can provide up to three times more daylight than an equally-sized vertical window. People work better in naturally lit workspaces and natural lighting can have less of an environmental impact than artificial lighting.

The National Domelight Company can advise on specific industry policies and regulations, and give guidance on introducing natural light into buildings.

more choice, better prices.

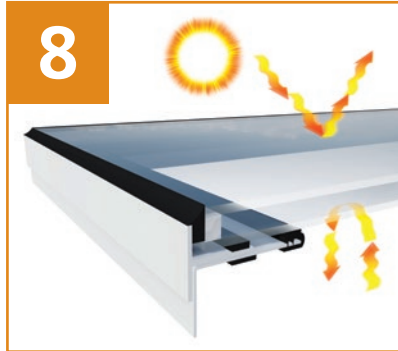
Contents Overview



6

How to choose the right specification

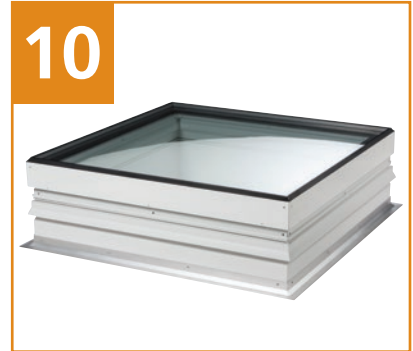
See our *How to specify* checklist for the easy way to choose the right rooflights for your project.



8

Glass & Glazing Options

A look at the various options available to help you get the best from your rooflight.



10

Upstand types including:

MK1 Vertical	10
MK2 Splayed & MK2 Vertical	11
MK3 Vertical	12



19

Smoke Vents/AOVs

A range of Automatic Opening Vents (AOV's) and Smoke Vents to ensure a natural flow of smoke from the building when required. Optional control panel and controls also available.



Ventilation/Access Options including:

Hit & Miss

Rotary

Manual Hinged

Electric Hinged

13

14

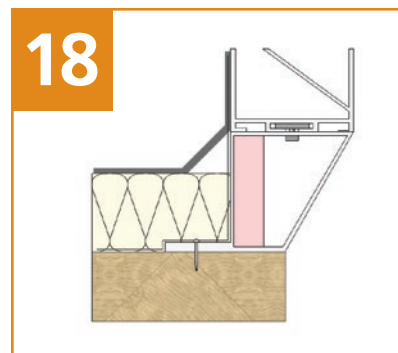
15

16



Access Hatches

Offering both light and access in one rooflight, the access hatch frame opens to approximately 85° with gas-assisted struts. Also available as an electrically operated version.



Additional Options

A range of options to compliment your Starglaze rooflight. Helping you to fully integrate with your specific rooftop requirements on site.



Rooflight Sizes

Available in a range of standard sizes (subject to stock). Purpose made sizes and specifications available at no extra cost, bespoke doesn't have to mean expensive with Starglaze.



Technical Services

The National Domelight Company sales team is always available to assist you, from your initial enquiry through to after sales support. This includes help with specification writing, site surveys, budget costings, and fully detailed quotations.



Starglaze Video

Visit our website to watch the Starglaze Product Video.

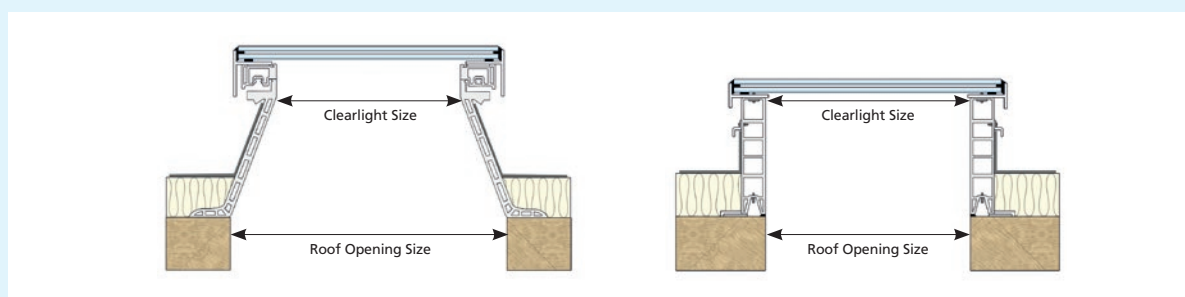
How to choose the right specification

We recommend you use the following guide to help you work out exactly what you need to specify for your project. The National Domelight team will be happy to help you apply the results to a full specification.

1 Size

Take measurements.

Whether you require a splayed or vertical upstand the same measurement is required as shown below (roof opening size). Please see sizes available on page 20 for further information.



2 Kerb type

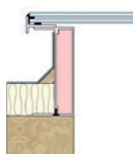
(See pages 10–12)

Select a kerb type.

MK1 Vertical
PVC upstand
310mm high



MK3 Vertical
Thermally
Broken
Aluminium
upstand
175mm high



MK2 Vertical
PVC upstand
210mm high



Adaptor Kerbs
available to
suit your new
or existing kerb
sizes



MK2 Splayed
PVC upstand
237mm high



Please view individual
upstand pages for further
information on your
chosen upstand type.

3 Ventilation & Access

(See pages 13 – 17)

Select a ventilation type that is compatible with your chosen upstand.

Upstand	Ventilation type				
	Hit & Miss	Rotary	Manual Hinged	Electric Hinged	Access Hatch
MK1		•	•	•	
MK2 Splayed	•	•	•	•	
MK2 Vertical	•	•	•	•	•
MK3	•		•	•	•

4 Additional options/ AOVs & Smoke Vents

Please refer to pages 18 & 19.

5 Glass and Glazing Specification

Please refer to pages 8 & 9.

Other information

For more detailed information, please refer to the relevant pages in this brochure, our website or give our Sales Team a call.



Glass & Glazing Options

The operational case for glass rooflights is impressive: superb aesthetics, superior structural performance and thermal properties, making it the ideal choice for most rooflight or skylight applications.

Advances in glass manufacturing techniques have led to the development of a number of glass products with different properties, many of which are available with a Starglaze rooflight: from active solar control, high impact resistance, to low maintenance glass.



Double-Glazed as standard

All Starglaze units are double-glazed for improved heat insulation and energy conservation with the option to further increase the specification to triple glazing if required.

Depending on the size of your chosen Starglaze unit, the glass specification will range from a standard 6mm thick clear toughened outer pane, a 6.4mm laminated low E inner pane separated by a 16mm air cavity (28.8mm overall) which can be increased to a larger non-standard 34.8mm unit overall when a thicker 10mm outer pane and 8.8mm laminated low E inner pane is required for larger single piece glazed applications.

How this works: air is a poor conductor of heat and therefore reduces the heat transfer between the two panes of glass. The result is that this helps to keep more heat in during the winter, and out during those hot summer days. The panes are separated by a spacer bar and the perimeter of the unit is sealed resulting in a hermetically sealed unit.

What is Low-E?

Low Emissivity (Low-E) glass has a special coating normally applied to one side, designed to reflect heat back into a room and thus reduces heat loss. The extent to which Low-E glass reduces heat loss is measured by its U-value; the lower the U-value the better the thermal insulation.

Starglaze Optional Upgrades

Starglaze offers superior operational performance by upgrading the glazing specification in the following ways:

1. Filling the 16mm cavity with argon gas – a colourless, odourless, non-flammable inert gas that is more dense than air and consequently acts as a more efficient thermal buffer – improving the centre pane U-value by as much as 30%.

2. Solar Control Glass: reduces solar heat gain whilst offering high levels of natural light. Coated with a transparent metal oxide film on one side, the film works by reflecting and absorbing the heat entering the building from the sun. The solar gain (g-value) of the glass determines the amount of solar heat or radiation allowed to pass through, and consequently the amount that will be blocked.

The lower the g-value the less heat will pass through the glass and into the internal space, keeping it cooler on bright sunnier days. Starglaze offers the following Solar Control glazing options:

Solar Control 27

- Low g-value 0.27 – allows 27% solar heat transmittance into a room
- High light transmission (50%) for 'everyday' visual clarity
- Excellent U-value of 1.0W/m²K

Solar Control 33

- Moderate g-value 0.33 – allows 33% solar heat transmittance into a room
- High light transmission (60%) for 'good' visual clarity
- Excellent U-value of 1.1W/m²K

Solar Control 41

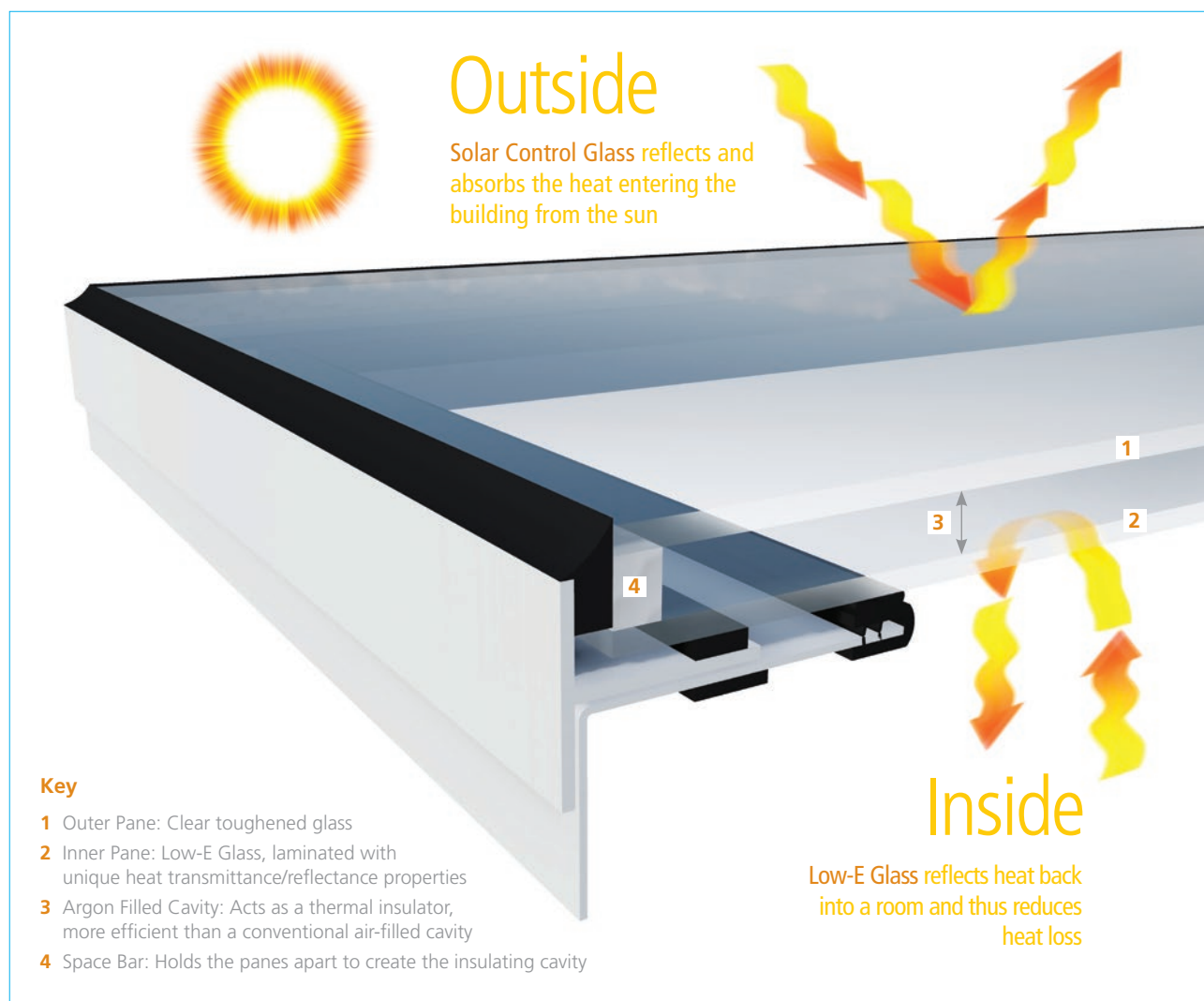
- Highest g-value 0.41 – allows 41% solar heat transmittance into a room
- High light transmission (68%) for 'outstanding' visual clarity
- Excellent U-value of 1.1W/m²K

Other glazing options:

- Triple-glazed units are also available upon request
- Low maintenance glass finish also available

For more advice, please call our **Technical Support Team on 01276 451555**.

Double-glazed unit



Glass Properties

Glass Type	Standard Glass 49			Solar Control 41		Solar Control 33		Solar Control 27	
	(Air)	(Argon)	(Acoustic)	(Air)	(Argon)	(Air)	(Argon)	(Air)	(Argon)
Toughened Outer Pane	6mm	6mm	6mm	6mm	6mm	6mm	6mm	6mm	6mm
Argon/Air Filled Cavity	16mm Air	16mm Argon	16mm Argon	16mm Air	16mm Argon	16mm Air	16mm Argon	16mm Air	16mm Argon
Laminated Inner Pane	6.4 Low E	6.4 Low E	9.5 Low E	6.4	6.4	6.4	6.4	6.4	6.4
G-Value (Solar Factor)	0.49	0.49	0.49	0.41	0.41	0.33	0.33	0.27	0.27
Light Transmission %	70	70	69	68	68	60	60	50	50
Centre Pane U-Value (W/m ² K)	1.3	1.1	1.1	1.3	1.1	1.3	1.1	1.3	1.1
Noise Reduction (Rw)	33dB	33dB	39dB	33dB	33dB	33dB	33dB	33dB	33dB
Effect on Room Temp.	Warmest			Warm		Mild		Cool	

DGU Fragility – Non Fragile Class B to ACR(M)001:2014 (nominal width approx. 1.2m)

PVCu Upstands

Starglaze upstands are designed for use with Starglaze rooflights to provide the best thermal interface when combined as a unit. When used together they help make the roof more thermally efficient and reduce energy bills for the user.



PVC Upstand Benefits

The multi-chambered construction of Starglaze PVC upstands makes them particularly tough and also adds to their thermal efficiency.

They come in a variety of heights, from 200mm, are compatible with a range of ventilation and access hatch options, and are suitable for most roof finishes.

Starglaze upstands enhance the overall look of the rooflights, are easy to install, and are outstanding value for money. Also, as they are pre-finished in white on the inside, there's no need to spend time on additional painting.

Starglaze upstands are available as both splayed and vertical units to suit your project. Splayed upstands will produce a more widespread distribution of available light whereas the vertical upstand will maximise the quantity of light available through the roof opening.

MK1 Kerb/Upstand

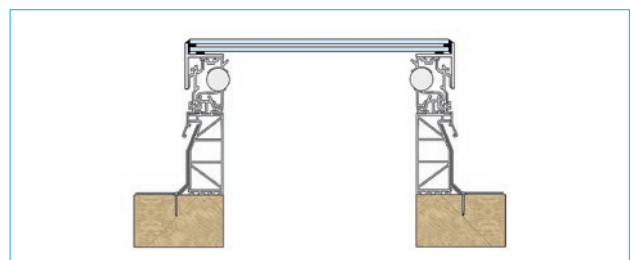
The MK1 kerb has three main insulating chambers which are fully compliant with current regulations and future-proofed against likely changes. With an exceptionally low U_d Value of 1.3 W/m^2K , the MK1 kerb upstand more than meets the requirements of Part L.

The kerb works equally well with both polymeric and PVC roofing membrane systems, and bituminous membrane and mastic asphalt systems. The MK1 upstand is 310mm high and has a built-in cascade water management system that redirects moisture to the outside of the building.

The assembly for the rooflight incorporates a unique finish to fully protect the top edge of the roofing membrane and a special 'key' finish to the PVCu kerb is torch-on system friendly. The roofing finish can be applied to the upstand before clipping the glazing and ventilation zones into place which makes the assembly process much easier. It also reduces the likelihood of damage during installation.



MK1 unventilated PVC kerb/upstand double-glazed



MK1 unventilated PVC kerb/upstand fitted direct to roof deck

MK2 Splayed & Vertical Kerb/Uprand

The MK2 upstand consists of a multi-chambered, twin-walled PVC-U material and, with an impressive U_g Value of $1.8 \text{ W/m}^2\text{K}$, it more than satisfies the compliance requirements of Part L.

The 'all thermoplastic construction' of the MK2 upstand ensures outstanding thermal efficiency, high resistance to weathering, and low maintenance. The splayed upstand height is 237mm.

Key features include aluminium trim and steel security insert housed within the PVC-U section. Also air leakage is kept to a minimum to ensure the upstand meets Part L requirements.

A 2mm wall thickness ensures weld strength and a weather seal on all opening rooflights which maintain weather-tightness.

A special 'key' finish to the PVC-U kerb assists adhesion of membrane and the PVC-U kerb is torch-on system friendly.

The Starglaze MK2 kerb is now also available vertically sided at 200mm high. This option was added to the Starglaze range to help specifiers and home owners achieve the maximum light possible through their roof opening, this is especially beneficial when using ventilated or access rooflight options giving a greater free vent area to the roof above.



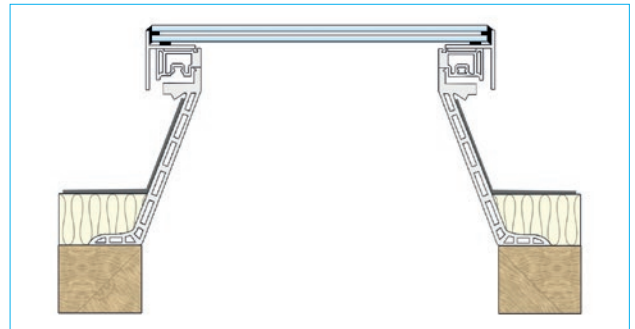
MK2 splayed unventilated PVC kerb/upstand double-glazed



MK2 splayed unventilated PVC kerb/upstand fitted direct to roof deck



MK2 vertical unventilated PVC kerb/upstand double-glazed



MK2 vertical unventilated PVC kerb/upstand fitted direct to roof deck

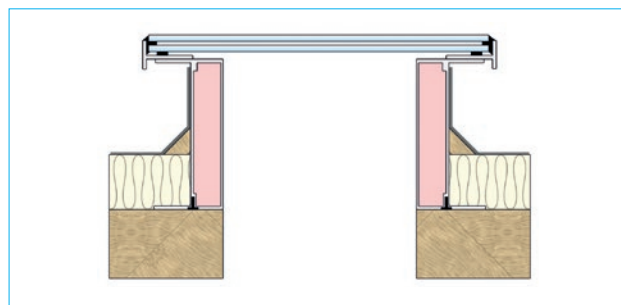
MK3 Thermally Broken Aluminium Upstands

With a U_g Value of $2.2 \text{ W/m}^2\text{K}$ the MK3 upstand is a thermally broken aluminium system offering maximum compliance to Part L. With adjustments to the width of the insulation in the upstand, as an optional extra, U_g Values as low as $1.8 \text{ W/m}^2\text{K}$ can be achieved for those who need it.



MK3 vertical unventilated thermally broken aluminium kerb/upstand double-glazed

The standard MK3 upstand height is 175mm (higher upstands are available on request). Air leakage is kept to a minimum to ensure the upstand meets Part L requirements. Frames and kerbs come in a standard white finish although kerbs are also available in other RAL colours if required.



MK3 vertical unventilated thermally broken aluminium PVC kerb/upstand double-glazed

Starglaze Case Study

Contemporary garage conversion

The project

A contemporary garage conversion adjacent to a circa 1970 detached bungalow in Camberley, Surrey - comprising a stylish double bedroom and en suite.

The requirements

The Building Contractor, Nathan Hawkins, was assigned responsibility for sourcing and offering his client choices for specific building materials and fixtures and fittings – including natural light source options. Achieving a quality look and feel within a moderate budget was key. The budget dictated that the height of the ceilings could not be raised to 'normal' room height and most importantly the layout of the property meant that fitting windows in the conversion was not feasible therefore rooflights were the logical solution.

The solution

The builder selected NDC as the preferred supplier based on several factors including; great customer service, comprehensive product range, high quality standards and tried and tested reliability. Plus all the company's units clearly adhered to the necessary and vitally important building regulations.

Glass skylights were specified because the roof of the garage conversion would be clearly visible and therefore it was important that the skylights were visually appealing. Using NDC's brand matrix Nathan was able to identify the best type of unit specifically for this project. The client was offered a couple of alternatives and it was decided to fit 'Starglaze', which offers a cost effective solution with all the benefits of glass. Glass is a popular material for use in rooflights due to its clean lines and aesthetic looks. Flat glass rooflights are perfect for use in areas where a low profile rooflight solution is required.

The size of the units for each of the rooms was carefully considered to ensure they didn't over power the room but allowed maximum light. A Starglaze double glazed glass rooflights $600 \times 1200\text{mm}$ was fitted in the $2.5 \times 4\text{m}$ bedroom and $475 \times 700\text{mm}$ rooflight in the $1.5 \times 2\text{en suite}$. Hit & Miss Ventilation and MK2 vertical PVC upstands were specified and in the bedroom a manual hinged ventilation was included with a winding rod. The construction of the units means there is no cold bridging so the risk of condensation is reduced and good insulation is ensured.



The conclusion

High quality additional light and airy accommodation has been created within the existing footprint of the home. Low ceilings and no windows were a non-issue thanks to NDC's Starglaze units flooding both of the new rooms with daylight. Consistent quality, fast delivery on request and competitive pricing all came as standard.

Building Contractor Nathan Hawkins says: "NDC offer a good range which meant I could offer the customer real choice with excellent options to fit the brief. Their customer service was exceptional. I received one to one advice on the specific needs of this job including comprehensive installation diagrams and lots of tips on best way and what to do."

Actual products supplied:

- 1 x Starglaze double-glazed glass rooflights with Hit & Miss Ventilation and MK2 vertical PVC upstand to suit a roof opening size of $475 \times 700\text{mm}$
- 1 x Starglaze double-glazed glass rooflights with Hit & Miss Ventilation and Manual Hinged ventilation with portable winding rod on a MK2 vertical PVC upstand to suit a roof opening size of $600 \times 1200\text{mm}$

Please contact National Domelight Company for further details.

Ventilation/Access options

Whatever the size and shape of the space, fresh air will be as important as natural daylight to those using it. Starglaze rooflights are available with a wide range of ventilation options that ensure the finished roof admits the right amount of light and air to suit every need.

Hit and Miss ventilation

Hit and Miss ventilation is a great way to provide minimal background air circulation and comes as standard via adjustable vents fitted to 2 sides of your chosen upstand. A system of 4-sided ventilation, offering increased air flow, is also available on request.

Upstand	Hit & Miss ventilation available
MK1 PVC	
MK2 Splayed PVC	•
MK2 Vertical PVC	•
MK3 Thermally Broken Aluminium	•



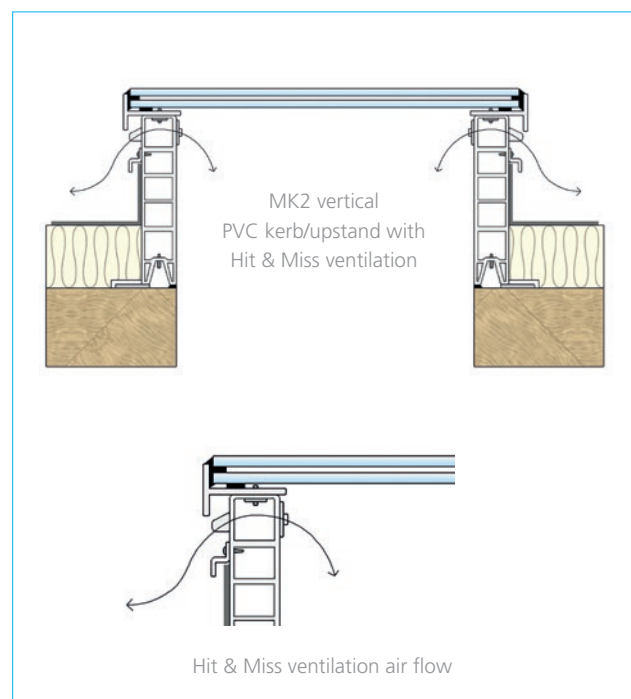
Hit & Miss vent (open)



Hit & Miss vent (closed)



Vertical MK2 PVC upstand with Hit & Miss ventilation double-glazed



For more advice, please call our **Technical Support Team on 01276 451555**.

Rotary Ventilation



A unique rotary action vent controller offers variable ventilation, distinctive internal appearance and smooth, silent operation. Rotary ventilation also prevents 'in-blown' roof debris and water ingress.

Set into the side wall of the ventilation zone the vents are fully protected from wind-borne water, debris and insect ingress, by an integral continuous weather cowl. The vents are on two sides of the frame and, when closed, form a virtual triple-skin chamber which keeps air leakage to a minimum. An integral water management system also helps ensure that any moisture is drained to the outside of the building.

Upstand	Rotary ventilation available
MK1 PVC	•
MK2 Splayed PVC	•
MK2 Vertical PVC	•
MK3 Thermally Broken Aluminium	



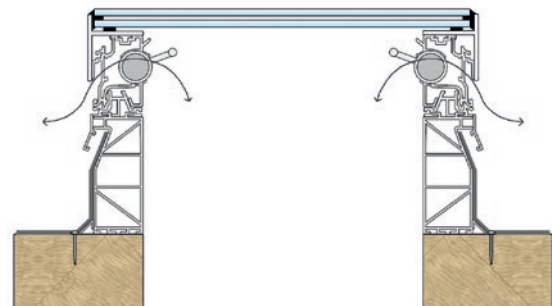
MK1 vertical PVC kerb/upstand with rotary ventilation double-glazed



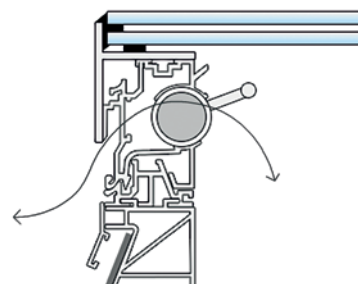
Rotary vent (open)



Rotary vent (closed)



MK1 vertical PVC kerb/upstand with rotary ventilation



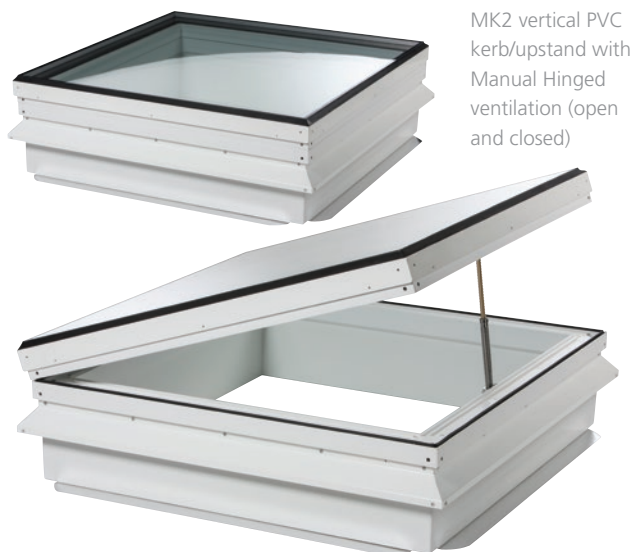
Rotary ventilation airflow

Manual Hinged Ventilation

For spaces that need high levels of air circulation through the rooflight, manual hinged ventilation is the perfect solution. Offering manually controlled adjustment with a supplied portable winding rod.

Vents are easily controlled with a portable winding rod which comes as standard. Ventilation levels can be precisely managed by hinging the double-glazed top section away from the upstand by 5mm – 300mm (dependent on the size of the rooflight).

For those looking for a more minimalistic manual hinged mechanism a manual chain opener is also available in place of the traditional worm gear arrangement.



MK2 vertical PVC kerb/upstand with Manual Hinged ventilation (open and closed)

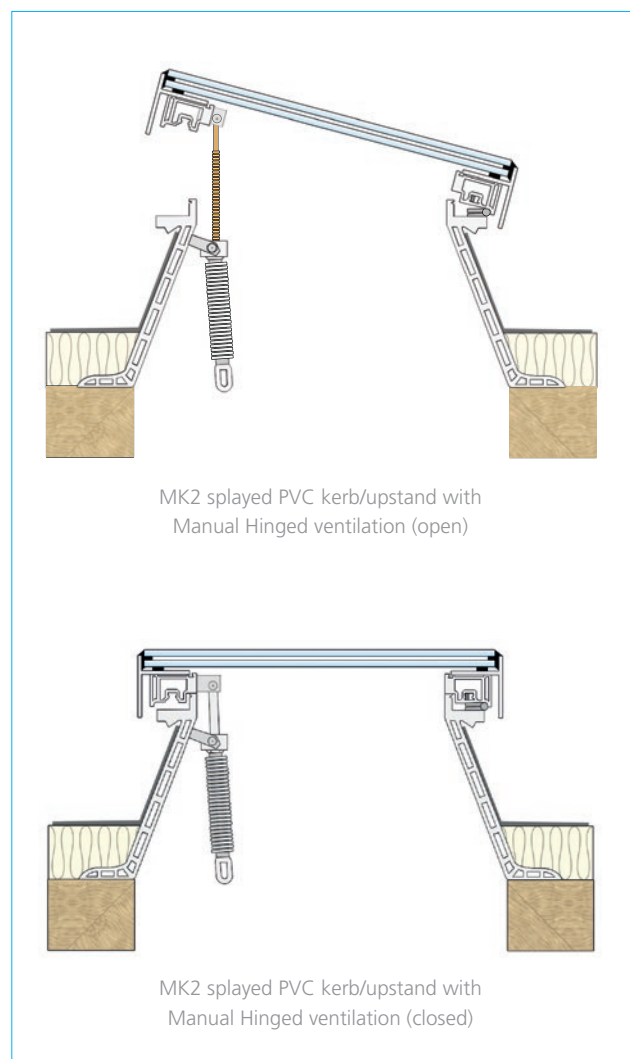


Manual Hinged spindle (open)



Portable winding rod supplied as standard

Upstand	Manual Hinged ventilation available
MK1 PVC	•
MK2 Splayed PVC	•
MK2 Vertical PVC	•
MK3 Thermally Broken Aluminium	•



MK2 splayed PVC kerb/upstand with Manual Hinged ventilation (open)

MK2 splayed PVC kerb/upstand with Manual Hinged ventilation (closed)

Electric Hinged Ventilation

Electric hinged ventilation is the perfect solution for those who need a large amount of ventilation through the rooflight at the touch of a button.

Vents can be easily and precisely controlled from a wall-mounted switch. The mechanism hinges the double glazed top section away from the upstand from 5mm – 300mm (as standard) but for those that need more air circulation the electric hinged option can be supplied with a longer chain actuator. The electric hinged mechanism is 230V mains powered (as standard) and a 24V option is also available (please contact us for details).



Electric chain actuator

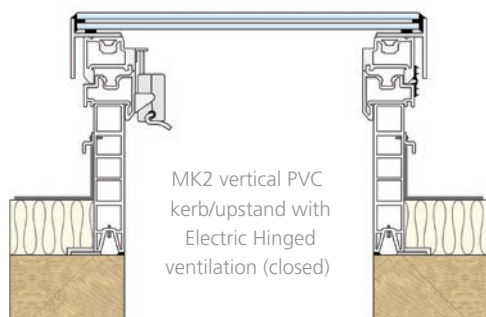
Upstand	Electric Hinged ventilation available
MK1 PVC	•
MK2 Splayed PVC	•
MK2 Vertical PVC	•
MK3 Thermally Broken Aluminium	•

Optional Extras

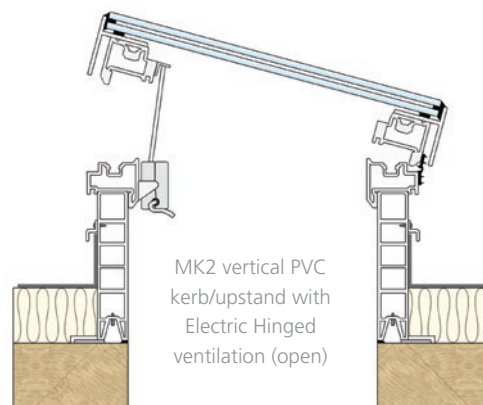
• Rain Sensor • Thermostat • Remote Control



MK2 splayed PVC kerb/upstand with Electric Hinged ventilation (open and closed)



MK2 vertical PVC
kerb/upstand with
Electric Hinged
ventilation (closed)



MK2 vertical PVC
kerb/upstand with
Electric Hinged
ventilation (open)

Access Hatches



Where access to a roof space is needed, Starglaze rooflights can double up as a means of light and access. The hinged access hatch frame opens to approximately 85°. They are secured from the inside by a handle and lockable hatch with gas-assisted struts to ensure the rooflight stays open when in use.

Starglaze access hatches are only available with vertical upstands to ensure you get the maximum width to enable safe and easy passage.

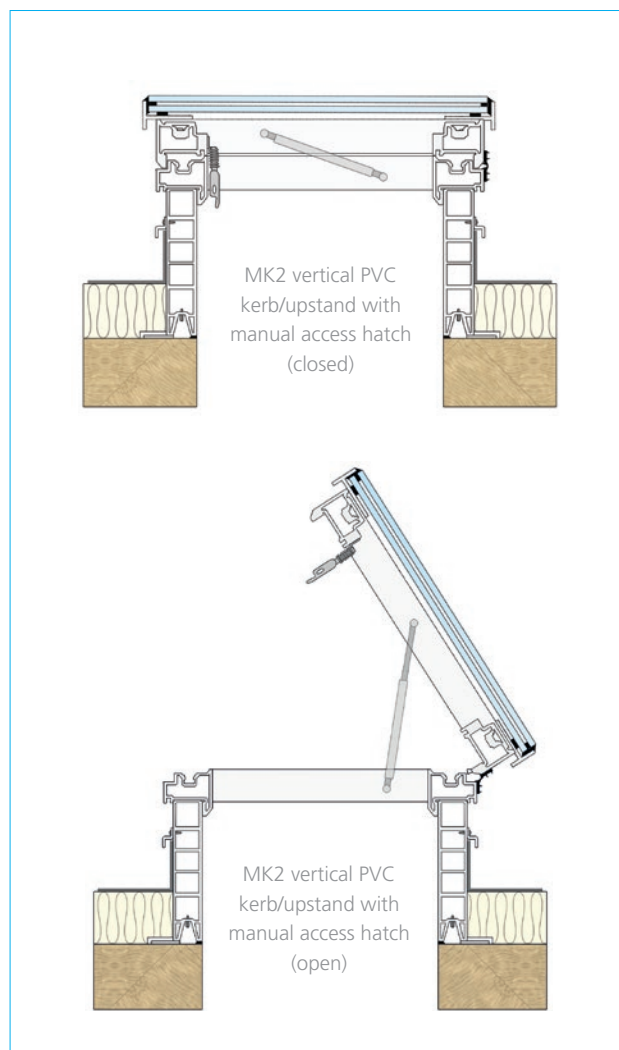
Starglaze access hatches are also available with electric hinged operation via 240V actuators for those who want more convenient access to the roof area at the touch of a button.

Upstand	Access Hatch available
MK1 PVC	
MK2 Splayed PVC	
MK2 Vertical PVC	•
MK3 Thermally Broken Aluminium	•



MK3 vertical PVC kerb/upstand with manual access hatch (open and closed)

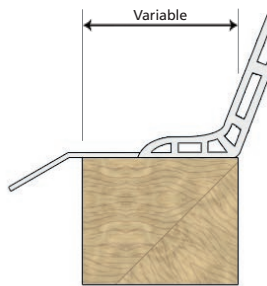
For more advice on opening units with remote electric operation, please call our **Technical Support Team on 01276 451555**.



Additional Options



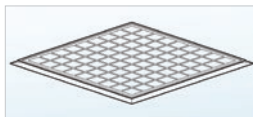
To ensure that you get the right rooflight for the space the Starglaze range is available with various options. Below are some of the more popular options available in addition to the standard rooflight range.



Adaptor Kerb

Adaptor Kerb

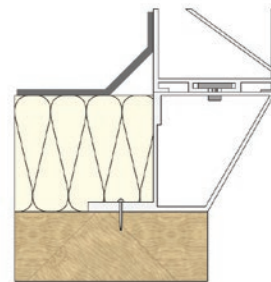
- Allows the rooflight to be fixed to new and/or existing builders kerbs and can incorporate various ventilation options. Particularly useful option for extra wide timber or concrete kerbs on site. Made to specific sizes to suit your needs.



Intruder Grid

Intruder Grid

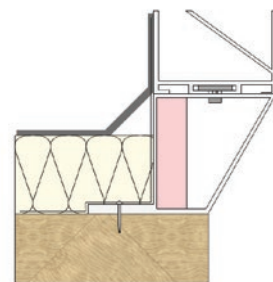
- Intruder grid systems can be added to all rooflights in the Starglaze range. Positioned between the upstand and the roof structure they consist of a 3mm diameter, solid steel fully-welded mesh in a 75mm grid. This system will resist unwanted entry attempts even when the rooflight has been compromised or removed.



Flexible metal foot

Flexible Metal Foot

- This roof attachment can be tailored to accommodate varying thicknesses of roof insulation, while allowing the flexibility to match the rooflight to roof opening.



Insulated metal foot

Insulated Metal Foot

- Provides the same adaptability as the flexible metal foot whilst allowing 'cut to falls' variable depth insulation systems.

Smoke Vents/AOVs

Designed to reduce smoke build-up, helping to provide a safer escape route for occupants and access for fire-fighting personnel. Working in partnership with leading specialists in control systems we provide a complete package of smoke ventilation options.

Helping you comply with Building Regulations

In England and Wales **Part B of the Building Regulations** covers fire and the **Approved Document (AD B) Volume 2** provides guidance applicable to flats and non-dwellings.

The following national, regulatory guidelines have similar requirements: Section 2 of the Scottish Building Standards Agency Technical Handbooks 2007; Technical Booklet E of the Building Regulations (Northern Ireland); Technical Guidance Document B of the Government of Ireland Building Regulations 2006. **AD B** identifies some situations where AOVs providing natural ventilation are appropriate, including:

- Small single-stair blocks of flats
- Common escape routes in larger blocks of flats
- Basement areas
- Enclosed car parks
- Vertical smoke shafts as part of a smoke control design



Close-up of concealed actuator



140° smoke vent (open)

Upstand	Smoke Vent/AOV available
MK1 PVC	
MK2 Splayed PVC	
MK2 Vertical PVC	
MK3 Thermally Broken Aluminium	•

In several cases **AD B** specifies the minimum required level of ventilation – generally either 1m² or 1.5m².

Selection of control options available



Fireman's Switch



Smoke Detector



Control Panel 3 Amp



Control Panel 6 Amp

CE Marked units are available on request – For more advice, please call our **Technical Support Team on 01276 451555**.

Starglaze Rooflight Sizes



To ensure that you get the right rooflight for the space the Starglaze range is available with various options. Below are some of the more popular sizes available.

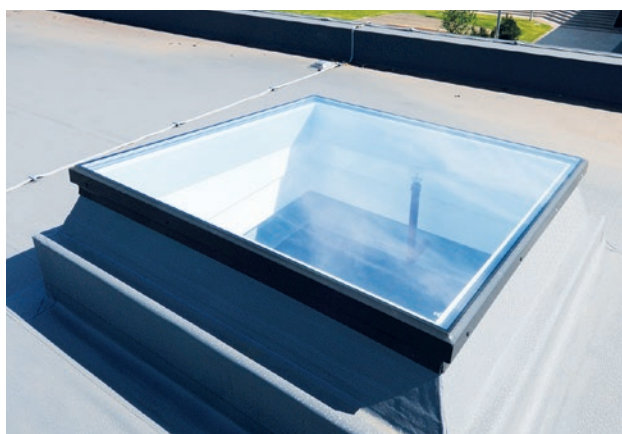
Non-Standard Sizes

No need to compromise your build design to accommodate standard sizes, and a custom-made unit doesn't have to mean expensive. Starglaze units can be made to non-standard sizes to your exact requirements. Just tell us what size and specification of rooflight you need and leave the rest to us. On receipt of your order, detailed drawings will be provided to ensure you are happy with the unit before production.



Popular Sizes

Dimensions (mm) Roof Opening size	600	750	900	1050	1200	1350	1500	1650	1800	1950	2400
600	●	●	●	●	●	●	●	●	●	●	●
750	●	●	●	●	●	●	●	●	●	●	●
900	●	●	●	●	●	●	●	●	●	●	●
1050	●	●	●	●	●	●	●	●	●	●	●
1200	●	●	●	●	●	●	●	●	●	●	●
1350	●	●	●	●	●	●	●	●	●	●	●
1500	●	●	●	●	●	●	●	●	●	●	●
1650	●	●	●	●	●	●	●	●	●	●	●
1800	●	●	●	●	●	●	●	●	●	●	●
1950	●	●	●	●	●	●	●	●	●		
2400	●	●	●	●	●	●	●	●	●		



For more advice, please call our **Technical Support Team on 01276 451555.**

Why do we need natural sunlight?

There is no denying that natural daylight in a room can make all the difference to its occupants. Rooflights and Skylights are the best way of introducing natural light and can provide up to three times more daylight than an equally-sized vertical window. People work better in naturally lit workspaces and natural lighting can have less of an impact than artificial lighting.



Technical Services

The National Domelight Company sales team is always available to assist you, from your initial enquiry through to after sales support. This includes help with specification writing, site surveys, budget costings, and fully detailed quotations.



Health & Safety

(HSE) Health and Safety in Roof Work states that where rooflights are required, designers should consider:

- Specifying rooflights that are non-fragile
- Fitting rooflights designed to project above the plane of the roof and which cannot be walked on (these reduce the risk but they should be capable of withstanding a person falling onto them)
- Security enhancement, e.g. by means of mesh or grids fitted below or above the rooflight
- Specifying rooflights with a design life that matches that of the roof, taking account of the likely deterioration due to ultraviolet exposure, environmental pollution and internal and external building environment.

Ventilation

On a standard kerb 1200x1200mm vented on two sides the free air space is; Hit & Miss Vent 92cm² (9,200mm²) – Rotary Vent 112cm² (11,200mm²).

Fire Rating

When used in rooflights, Building Regulations Approved Document "B" (Fire Safety) rates unwired glass at least 4mm thick as having an AA designation (national classification) or, B_{ROOF} (t4) (european classification).

Polyester Powder Coating

All metal kerbs and glazing bars are supplied in a White matt finish to BS 6496. Other RAL colours are available on request. Please contact National Domelight Company for further information.

Handling & Storage

While all Starglaze rooflights and associated products are suitably packaged to avoid damage, care should be exercised when handling. For moving larger items, two or more people or specialised lifting machinery may be needed. All products should be stored and covered to protect against weather and sunlight.

Condensation

The formation of condensation on the inner surface of a rooflight and/or its upstand, is dependent on numerous environmental conditions such as humidity, internal and external ambient temperature and/or natural/mechanical air movement.

Condensation will occur where a surface at a lower temperature than the surrounding air interfaces with high humidity conditions. Condensation will therefore be worse during the winter months where temperatures drop and air humidity through rainfall substantially increases.

If the humidity of the air at source i.e. inside the building, cannot be reduced or removed by addressing the moisture producing event, then the risk of condensation forming on/in the unit will increase substantially.

Condensation may therefore form with there being no design fault whatsoever in the rooflight, and which should dissipate naturally when the ambient temperature increases and/or the moisture developing activity decreases.

Where rooflights are to be installed in dwellings and other high humidity areas National Domelight Company will only recommend double or triple glazing. It is also recommended that ventilation is either added or increased in any affected areas to reduce humidity levels.

Environmental conditions are beyond the control of National Domelight Company and consequently, we are therefore unable to give absolute guarantees on the non-occurrence of condensation on ANY Starglaze products.

Installation

All Starglaze rooflights are supplied ready assembled and pre-drilled complete with security screw bolts and sealing tape where applicable, and are delivered to site in protective packaging. Full instructions and fixings (for timber substructure) are included with all products, and should be carefully studied prior to installation.

Guarantees

All Starglaze Rooflights when installed on Starglaze kerbs and adaptor kerbs and in accordance with the Manufacturer's instructions are guaranteed to be fit for the purpose that it was designed, for a period of 20 years from the date of supply by National Domelight Company. Any removal, re-fitting or alteration to the rooflights after initial installation must be carried out in the presence of Starglaze personnel or their representatives for this guarantee to remain effective.

Exclusions:

1. This guarantee does not apply to any materials that have been scratched, abraded or exposed to corrosive materials.
2. Glass DGUs are covered for integrity only for a period of 1 year.
3. This guarantee does not cover damage due to impact or forced entry.
4. This guarantee does not cover normal wear and tear, nor does it cover hinges, motors and fittings.



more choice, better prices.

**Pyramid House
52 Guildford Road
Lightwater
Surrey
GU18 5SD**

Tel: 01276 451555
Fax: 01276 450610
Email: info@nationaldomes.com
www.nationaldomes.com

**Visit our website to watch the
Starglaze product video.**



Important notes:
The responsibility for determining that any building component complies with the relevant
Building Regulations rests solely with the client or specifier.
The National Domelight Company policy is one of continuous product improvement:
accordingly we reserve the right to alter specifications without notice at any time.