

Waterproofing Systems Liquid Applied

- Type A Barrier Protection in accordance with BS 8102 (2009)
- Liquid applied damp proof and waterproofing systems
- Suitable for new and existing concrete structures
- Gas barrier systems



TRI-SEAL

- Epoxy resin coating
- Solvent free, low odour

A solvent free, two part epoxy resin coating, typically used as a surface damp proof membrane and a water vapour suppressant. Suitable for use as a waterproof barrier beneath raised access floors, in plant rooms and banded areas. It is also suitable for application on damp surfaces, such as sand/cement and cement floors subject to rising damp or containing residual construction moisture. Tri-Seal can be used as a general purpose coating for surfaces subject to foot and light wheeled traffic. Tri-Seal can be applied using a brush or medium pile roller on to sound, clean surfaces.



Packaging:

Supplied in 2.5, 5, and 20 kg packs.

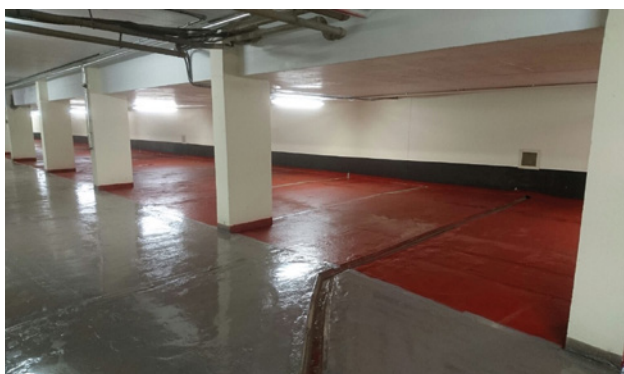
NB New concrete subfloors or sand/cement screeds should be left for a minimum of seven days to cure before applying this product.

Specification:

In accordance with NBS Specification J30 Liquid Applied Damp Proofing 10 Cold Applied Damp Proofing. Type A Barrier Protection in accordance with BS 8102 (2009).

Technical Data:

Composition:	Part 1: Low viscosity epoxy resin, reactive diluents, flow promoters and oxide red pigment. Part 2: Low viscosity epoxy curing agent and accelerator.
Mix Ratio:	2 parts resin to 1 part hardener by weight.
Curing Time:	@ 20°C re-coatable in 6-8hrs. @ 10°C re-coatable in 14-20hrs. Full cure is achieved up to 7 days after application depending on temperature.
Coverage:	1st coat 3-4m ² /kg @ 200 micron film thickness. 2nd coat 4-5m ² /kg @ 200 micron film thickness. Moisture vapour suppression is maximised when the total coating thickness is 400 micron or over.
Colour:	Red Oxide or Mid Grey



TRITON TT VAPOUR MEMBRANE (TTVM)

- Fast drying waterproof and gas-proof membrane
- Single component
- Cannot be punctured as fully bonded
- Easily repaired by locally overcoating
- Methane, Carbon Dioxide and Radon barrier*
- Suitable for use on ICF** structures

A multi-functional, ready blended coating that can be retro-applied as a waterproof and gas-proof* membrane to concrete, masonry and brick substrates, or as an alternative to sheet membranes in new construction. TTVM can be applied by airless spray, roller or brush to walls, floors and soffits.

Packaging:

Supplied in 5 and 20 litre packs.

Specification:

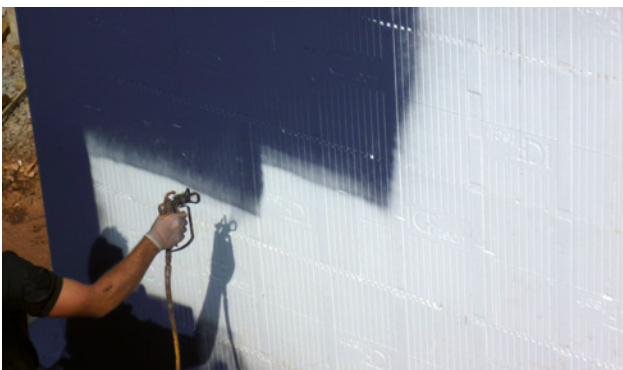
In accordance with NBS Specification J30 (Liquid applied damp proofing) 10, 130.

Technical Data:

Components	1
Form	Thixotropic Liquid
Specific Gravity	1.40 (approx)
Application Temperature	Plus 4°C
Toxicity	Non – toxic
Cured Properties	
Adhesion to concrete	>1.1N/mm ²
Elongation ASTM D2370 %	>100%
Tensile Strength ASTM D2370	11 N/mm ²

* Gas permeability test certificate available to download at tritonsystems.co.uk

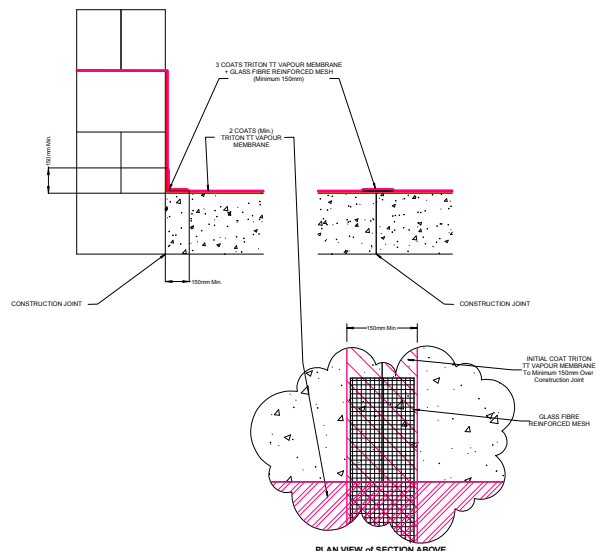
** ICF – Insulated Concrete Formwork



Spray application to ICF



TRITON TT VAPOUR MEMBRANE GAS BARRIER CONSTRUCTION JOINT DETAIL 2 (CO₂, METHANE & RADON)



TWS-POLY H

TWS-Poly H is a fast setting, hand applied, 2-component pure Polyurea coating. It is 100% solid and contains no VOCs.

TWS-Poly H has been developed as a high strength rigid material for use as a coating on to prepared concrete and various substrates. Application is by squeegee, trowel, brush or roller. The product benefits from fast film build up and quick cure times.

Typical applications include waterproofing of roofs and balconies where high abrasion resistance, flexibility and durability are required.

Specification:

In accordance with NBS Specification J30 (Liquid applied damp proofing/tanking) 10,130.

Packaging:

Supplied in 26.5kg containers.

Advantages:

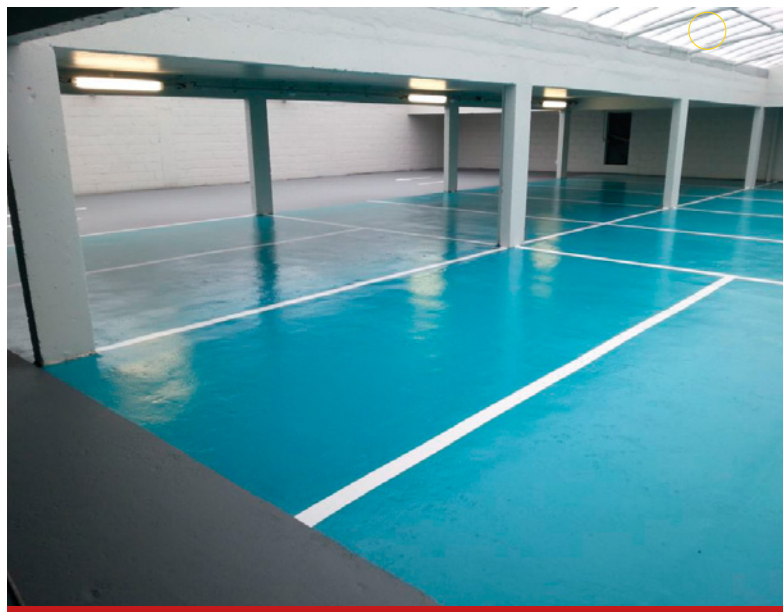
- Totally seamless once cured
- 100% solids, no VOCs
- Excellent bonding strength
- Fast drying
- Total, continuous adhesion
- Allows for building movement
- Low temperature application (2°C)
- Trafficable

Applications:

- Pitched roofs
- Flat roofs
- Gutters
- Flooring
- Crack bridging
- Tanking
- Lift pits
- Walls – outer
- Walls – inner

Technical Data:

Composition	Two pack Polyurea elastomeric resin
Curing time	at 5°C – 7 hours at 23°C – 3 hours
Colour	Grey, red
Coverage	2kg per m ² in one hand applied coat
Cured Properties	
Adhesion to concrete	2.0 N/mm ²
Elongation at break	600%



TWS-POLY S

TWS-Poly S is a 2-component, pure Polyurea system for elastic membrane application with crack-bridging capability. It is an extra fast curing system that can only be applied by twin nozzle, heated spray unit.

TWS-Poly S can be combined with different geotextiles to obtain on-site applied, seamless liners or coatings.

Specification:

In accordance with NBS Specification J30 (Liquid applied damp proofing/tanking) 10,130.

Packaging:

Supplied in 50kg or 400kg tins/drums.

Advantages:

- Excellent bonding strength
- Quick curing (<1 min)
- Total continuous adhesion
- Totally seamless once cured
- Allows for building movement
- Trafficable
- High abrasion resistance
- Proved under military testing

Applications:

- Pitched roofs
- Flat roofs
- Canals, dam repairs
- Sewage/waste water plants
- On-site applied liners
- Ponds
- Landfills
- Tunnels

Technical Data:

Composition	Two pack Polyurea elastomeric resin
Curing time	5 minutes approximately
Colour	Blue RAL 5015, Grey RAL 7011 or Tile Red
Coverage	2kg per m ² in one spray applied coat
Cured Properties	
Adhesion to concrete	4.0 N/mm ² (with epoxy primer)
Elongation at break	324%



TWS-FASTCOAT

A 1-component liquid waterproofing composition that, after polymerisation, produces an elastomeric, cold applied polyurethane membrane. The membrane cures in a continuous and elastic form, as a totally adhered layer.

This waterproofing layer guarantees total water-tightness and withstands building movements. Its fast curing rate allows its use as a base coat, reinforcing layer or topcoat, especially in low temperature applications.

Specification:

In accordance with NBS Specification J30 (Liquid applied damp proofing/tanking) 10,130.

Packaging:

Supplied in 10kg or 25kg drums.

Advantages:

- Elastic and seamless coating
- Weather resistant and excellent bonding
- Non-water emulsifiable
- Permanent water contact is allowed
- No reinforcement usually required (except at critical points or identified cracks and joints)

Applications:

- Low pitch and flat roof areas with light pedestrian traffic
- Wet rooms, kitchens etc
- Flooring with light pedestrian traffic
- Water channels and ponds

Technical Data:

Composition	Single pack moisture curing elastomeric resin
Curing time	1mm coat at 7°C/50% RH, touch dry in 4 hours 1mm coat at 27°C/60% RH, touch dry in 1 hour
Colour	Grey – other colours to order subject to quantity
Coverage	2kg per m ² over 2 coats
Cured Properties	
Adhesion to concrete	2.0 N/mm ²
Elongation at break	421%



TRITON SBR

Triton SBR is a latex admixture for cementitious mixes, renders, screeds and waterproof slurry coatings. Triton SBR improves the workability and durability of cement mixes, resulting in the cured material having a higher strength, density and water impermeability. Also increases flexibility and adhesive bond of a mix.

Specification:

In accordance with NBS Specification 10 Cementitious Mortar Tanking / Damp Proofing 120 Cement: Sand Mortar with Proprietary Waterproof Admixture.

Packaging:

Supplied in 5 litre and 25 litre packs.

TRITON LPA/PRIMER

Triton LPA/Primer is a ready to use emulsion that can be used as a surface primer for Triton Repair Mortar and Triton TT Vapour Membrane.

Packaging:

Supplied in 5 litre packs.

TRITON REPAIR MORTAR

Triton Repair Mortar is a pre-packed, modified cement based repair mortar for use with concrete, render and screed repairs. Use with Triton LPA/Primer as both a primer to the repair area and as a gauging solution for mixing the Triton Repair Mortar and to enhance the flexural strength of the mix.

Typical areas of use would include repairs to honeycombed concrete, leaking construction joints (Triton Quick Set also required), spalled concrete and repairs to screeds and renders

Packaging:

Supplied in 10kg packs.

TRITON FLEECE BAND

Triton Fleece Band is a reinforcing fabric for use with Triton TT Vapour Membrane and is specifically designed for use within liquid applied waterproofing systems.

Packaging:

Supplied in 1m x 100m and 300mm x 100m rolls.

TRITON QUICK SET (TQS)

Triton Quick Set is a single component, cementitious, fast setting plugging compound. When mixed with water, TQS produces a material to stem water flow, but can also be used as a fast setting mortar repair.

Triton TQS is not a finish and should be overcoated with Triton TT55 ME, TT Super or Triton TT Vapour Membrane.

Packaging:

Supplied in 15 kg packs.



Triton Systems supplies high performance cavity drain, watertight concrete, cementitious and liquid applied and fully bonded waterproofing systems designed to meet BS 8102 (2009). These are complemented by flooring, roofing and gas barrier systems and traditional timber preservation and damp proofing products.

Available for download at tritonsystems.co.uk:

- BIM Objects
- Booking forms for training courses and RIBA approved CPD seminars
- Technical and Material Safety Data Sheets for all Triton products
- CAD drawings for all Triton products
- Installation guides
- Product literature
- CE Marking Certificates
- Case studies



Triton Systems

Units 3 – 5 Crayford Commercial Centre, Greyhound Way, Crayford, Kent DA1 4HF
Tel: 01322 318830 Fax: 01322 524017 Email: info@tritonsystems.co.uk

Triton Chemical Manufacturing Co Ltd trading as Triton Systems