

ABSTRACT

GLAZED CERAMIC | WALL TILES



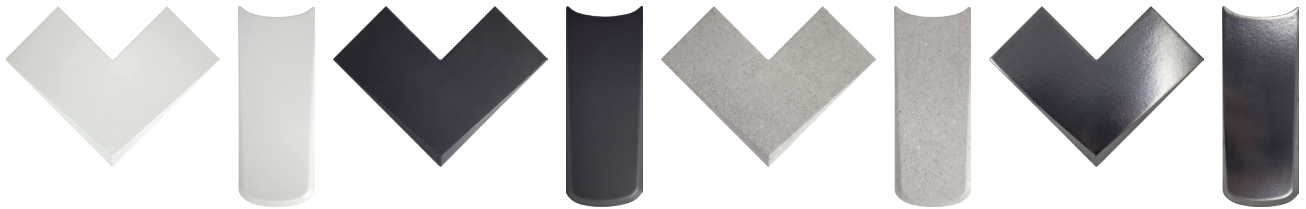
JOHNSON • TILES
Since 1901



www.johnson-tiles.com

ABSTRACT

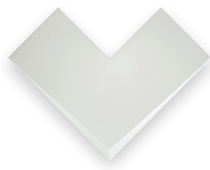
Not for the faint hearted, Abstract is perfect for making a bold statement to bring character and personality to any space. Roaming from the powerful to the playful, this range offers a striking selection of colour options, including White, Black, Stone, Steel, and a Pastel Mix of fifteen softer hues. Coupled with the daring shapes of the 200x200mm Chevron and 250x100mm Droplet, this special-order range is ideal to create a stunning feature wall or highlight a splash back. Abstract delivers a tactile quality providing dimension and texture to deepen the visual interest of every installation.





Colours & Product Codes

VI: Low Shade Variation



WHITE LRV: 81
(M) ABST1C



WHITE LRV: 81
(M) ABST1D



BLACK LRV: 10
(M) ABST2C



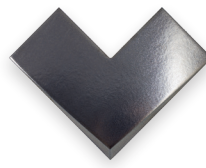
BLACK LRV: 10
(M) ABST2D



STONE LRV: 42
(M) ABST3C



STONE LRV: 42
(M) ABST3D

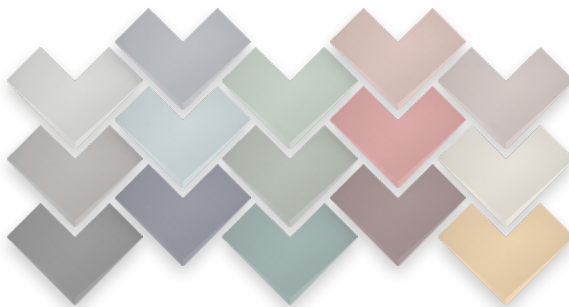


STEEL LRV: 6
(E) ABST4C



STEEL LRV: 6
(E) ABST4D

Note: ABST5C and ABST5D Pastel Mix contains a mix of all fifteen colours in each box.



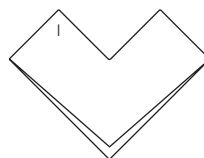
PASTEL MIX
(M) ABST5C



PASTEL MIX
(M) ABST5D



Sizes, Finishes & Availability



#	Size	Thickness	Finish	Colour Availability	Pieces/Box	Coverage/Box	Weight/Box
1	200x200mm Chevron	8mm - 14.5mm	(M) Matt	All Other Colours	23 Tiles	0.69m ²	10.71 kg
		8mm - 14.5mm	(E) Metallic	Steel Only	23 Tiles	0.69m ²	10.71 kg
2	250x100mm Droplet	8mm - 14mm	(M) Matt	All Other Colours	24 Tiles	0.63m ²	9.77 kg
		8mm - 14mm	(E) Metallic	Steel Only	24 Tiles	0.63m ²	9.77 kg

Note: For the most up-to-date availability information, please visit our website.

All LRV results are from Johnson Tiles' internal test reports and are to be used for guidance only. LRV: Light Reflectance Value.



Roomset Photography





Technical Data

Specification

Range	Size	Wall Suitability	Floor Suitability	Wet Barefoot	CSV	Material
Abstract	All Sizes	Internal Only	N/A	N/A	VI	Glazed Ceramic [BIII]

Physical Properties

Test	Standard	Requirement	Typical Test Result
Length / Width	EN ISO 10545 - 2	$\pm 0.5\% \leq \pm 2\text{mm}$	$\pm 0.5\%$
Thickness	EN ISO 10545 - 2	$\pm 10\% \leq \pm 0.5\text{mm}$	Pass
Straightness of Side	EN ISO 10545 - 2	$\pm 0.3\% \leq \pm 1.5\text{mm}$	Pass
Rectangularity	EN ISO 10545 - 2	$\pm 0.5\% \leq \pm 2\text{mm}$	Pass
Surface Flatness	EN ISO 10545 - 2	$\pm 0.5\% \leq \pm 2\text{mm}$	Pass
Water Absorption	EN ISO 10545 - 3	10% to 20%	> 10%
Modulus of Rupture	EN ISO 10545 - 4	Min. 15N / mm ²	$\geq 15\text{N} / \text{mm}^2$
Thermal Shock	EN ISO 10545 - 9	Pass	Pass
Crazing Resistance	EN ISO 10545 - 11	Pass	Pass
Frost Resistance	EN ISO 10545 - 12	-	Not suitable for areas where temperatures fall below freezing.
Chemical Resistance	EN ISO 10545 - 13	Min. Class B	Class A
Stain Resistance	EN ISO 10545 - 14	Min. Class 3	Class 5
Fire Rating	-	-	Class A1 - Non Combustible
UV Colour Resistance	-	-	Unaffected by Light
Weight / Box	10.71 kg [200x200x8mm]	9.77 kg [250x100x8mm]	

Note: All products are classed as BIII - Glazed Ceramic. All products conform to BS EN 14411.

Important Information

During the manufacturing process of ceramic, vitrified and porcelain tiles, some variation in shade or pattern can occur. Before fixing any tiles; several boxes should be opened and their contents mixed to ensure that size, colour, shade and patterning are acceptable. The tiles shown in this overview are quality products and conform to the physical properties listed above.

- All sizes in this overview are metric modular.
- For specific suitability and fit-for-purpose details please contact our technical helpline.
- Johnson Tiles cannot accept responsibility for any tiles that have been fixed.
- Every effort has been made to ensure the accuracy of the information given in this overview.
- In the interest of progress, Johnson Tiles reserves the right to change specifications and availability without prior notice.
- Nothing in these statements does or will affect the statutory rights of the consumer.

© Johnson Tiles, Johnson, Absolute and Material Lab are registered trademarks and together with Kerastar and product names are the trademarks of H&R Johnson Tiles Limited and licensed to Norcros Group (Holdings) Limited trading as Johnson Tiles.

© 2020 Johnson Tiles. All rights reserved. Printed in England.



For more information about Abstract or any
of our other product ranges simply visit
www.johnson-tiles.com |      

Where To Find Us

Johnson Tiles

Harewood Street,
Tunstall,
Stoke on Trent,
Staffordshire,
ST6 5JZ

Tel: +44 (0)1782 575 575
Fax: +44 (0)1782 577 377
Email: info@johnson-tiles.com

Samples Enquiries

Tel: +44 (0)1782 524 043
Fax: +44 (0)1782 577 379
Email: samples@johnson-tiles.com

Technical Helpline

Tel: +44 (0)1782 524 111
Fax: +44 (0)1782 577 379
Email: techadvice@johnson-tiles.com

JOHNSON • TILES
Since 1901