

# Buckingham

Porcelain  
Wall and Floor Tiles

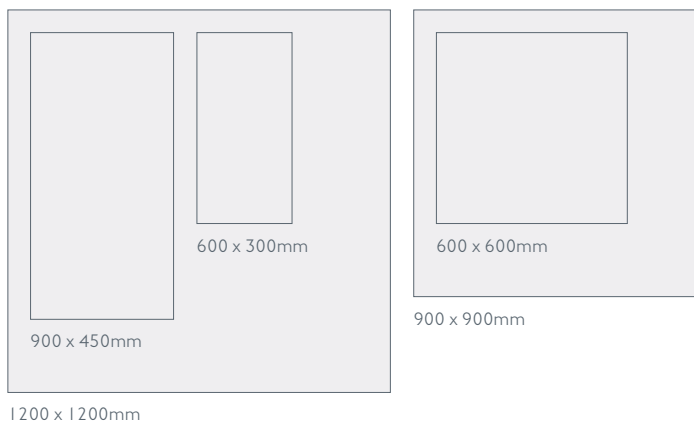


---

 **Buckingham** is available in **five sizes**, perfectly designed for seamless installation.

---

**Sizes**



---

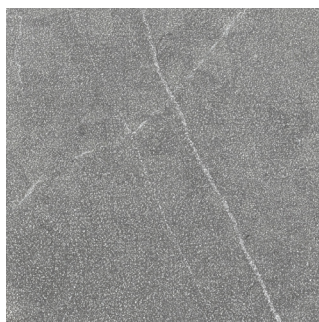
**Thickness**

All Sizes = 9mm

---

 **One finish**, combining form and function.

Example below is not to scale but has been enlarged to show detail:



---

**Soft Bush Hammered**

# **Four colours**, offering a neutral and contemporary palette.

For the most up-to-date availability information, please visit our website.



**Beige**

## **Beige**

### **Sizes**

600 x 300mm  
600 x 600mm  
900 x 450mm  
900 x 900mm  
1200 x 1200mm

### **Finishes**

Soft Bush Hammered

BUCK1B  
BUCK1B  
BUCK1B  
BUCK1B  
BUCK1B



**Light Grey**

## **Light Grey**

### **Sizes**

600 x 300mm  
600 x 600mm  
900 x 450mm  
900 x 900mm  
1200 x 1200mm

### **Finishes**

Soft Bush Hammered

BUCK2B  
BUCK2B  
BUCK2B  
BUCK2B  
BUCK2B



**Grey**

## **Grey**

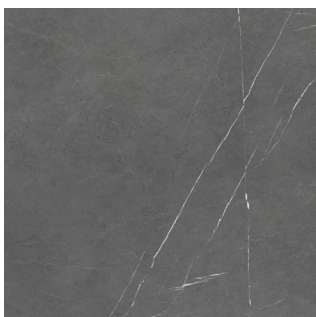
### **Sizes**

600 x 300mm  
600 x 600mm  
900 x 450mm  
900 x 900mm  
1200 x 1200mm

### **Finishes**

Soft Bush Hammered

BUCK3B  
BUCK3B  
BUCK3B  
BUCK3B  
BUCK3B



**Anthracite**

## **Anthracite**

### **Sizes**

600 x 300mm  
600 x 600mm  
900 x 450mm  
900 x 900mm  
1200 x 1200mm

### **Finishes**

Soft Bush Hammered

BUCK4B  
BUCK4B  
BUCK4B  
BUCK4B  
BUCK4B

---

**Buckingham**, a range of contemporary porcelain wall and floor tiles, offering a neutral colour palette and a wide choice of co-ordinating sizes.

For more details on suitability, or advice on any technical issues, please contact our technical helpline below.

---

## Specification

### Size - All Sizes

Wall	Floor	Wet Barefoot	Material	Finish
Internal and External	Internal	-	Porcelain	Soft Bush Hammered

### Floor Values - Natural

Pendulum 4S	R Value	Shade Variation	Wet Ramp	Traffic
Dry 36+ Wet 25 - 35	R9	V2	-	Commercial

Due to the manufacturing process of all floor tiles there may be small variations in slip resistance. Given this, we suggest you refer to our website or call our technical helpline for the most up-to-date information.

---

## Colour Notations

Due to the colour variance of these tiles, an accurate Light Reflectance Value and colour notation cannot be accurately calculated. For further information, please contact our technical helpline.

Front Cover Image: **Buckingham Anthracite Soft Bush Hammered 900 x 900mm**

---

### Samples

Tel: +44 (0)1782 524043  
Fax: +44 (0)1782 577379  
Email: [samples@johnson-tiles.com](mailto:samples@johnson-tiles.com)

### Technical Helpline

Tel: +44 (0)1782 524111  
Fax: +44 (0)1782 577379  
Email: [techadvice@johnson-tiles.com](mailto:techadvice@johnson-tiles.com)

