


# One

Glazed Porcelain  
Wall and Floor Tiles



---

 **One** is available in **one** small-format size, designed to be subtle and versatile.

---

**Size**




150 x 150mm

---

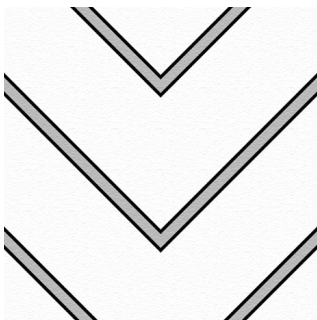
**Thickness**

150 x 150mm – 8mm

---

 **One finish**, combining both form and function.

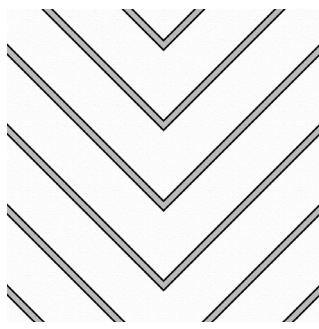
Example below is not to scale but has been enlarged to show detail:



---

Natural

 **One colour**, offering various geometric design options.  
For the most up-to-date availability information, please visit our website.



Black & White

PEI IV

#### Black & White

##### Size

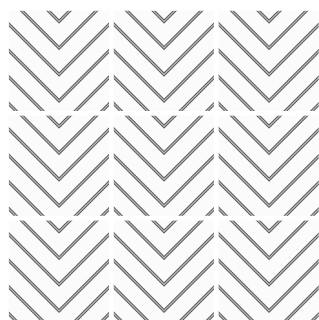
150 x 150mm

##### Finish

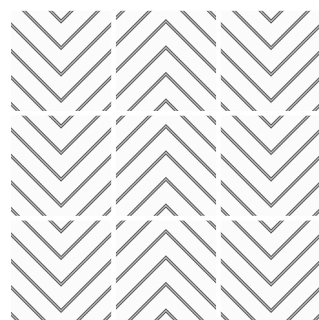
Natural

ONE01N

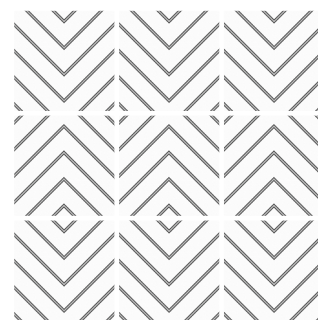
Create **many different looks**, depending on how the tiles are fixed together.



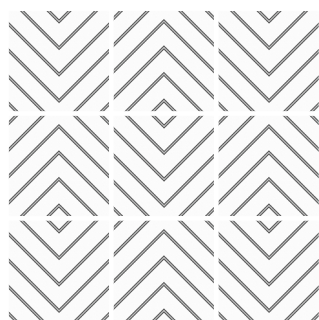
Design Option 1



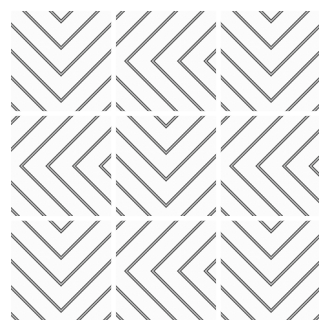
Design Option 2



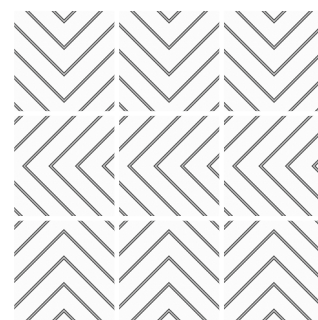
Design Option 3



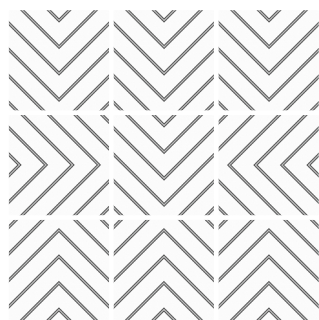
Design Option 4



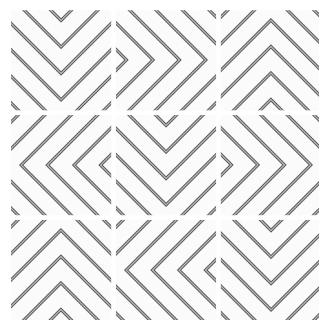
Design Option 5



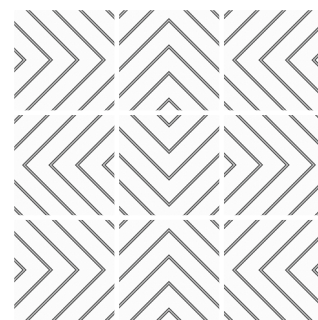
Design Option 6



Design Option 7



Design Option 8



Design Option 9

---

**One** is a stunningly simple range of porcelain wall and floor tiles. Comprising of a single versatile geometric pattern, perfect for creating head-turning statement designs.

For more details on suitability, or advice on any technical issues, please contact our technical helpline below.

---

## Specification

**150 x 150mm**

Wall	Floor	Shade Variation	Material	Finish
Internal and External	Internal	V1	Glazed Porcelain [Bla]	Natural

## Floor Values - Natural

Colour	Pendulum 4S	R Value	Wet Ramp	Wet Barefoot	Traffic
All Colours	Dry 36+ Wet 36+	R10	-	-	Commercial

Due to the manufacturing process of all floor tiles there may be small variations in slip resistance. Given this, we suggest you refer to our website or call our technical helpline for the most up-to-date information.

---

## Colour Notations

Due to the colour variation of ONE01N Black & White, an accurate NCS and LRV reading cannot be calculated. For further information, please contact our technical helpline below.

Front Cover Image: **One Black & White 150 x 150mm**

---

## Samples

Tel: +44 (0)1782 524043  
Fax: +44 (0)1782 577379  
Email: [samples@johnson-tiles.com](mailto:samples@johnson-tiles.com)

## Technical Helpline

Tel: +44 (0)1782 524111  
Fax: +44 (0)1782 577379  
Email: [techadvice@johnson-tiles.com](mailto:techadvice@johnson-tiles.com)

