


# Monochrome

Glazed Ceramic and Porcelain  
Wall and Floor Tiles

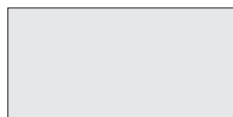


---

 **Monochrome** is available in **two** small-format sizes, designed to be both subtle and versatile.

---

#### Sizes



200 x 100mm



150 x 150mm

---

#### N.B

The following products in this range are classed as glazed ceramic [BIII]:  
PRG I, PRS I 2, PRG6, PRS I 3, PRG I I, PRS I 5 and MNCR I A

The following products in this range are classed as glazed porcelain [BIIa]:  
MNCR I N, MNCR2N, MNCR3N and MNCR I D

---

#### Thickness

200 x 100mm – 6.5mm  
150 x 150mm [BIII] – 6.5mm  
150 x 150mm [BIIa] – 8mm

---

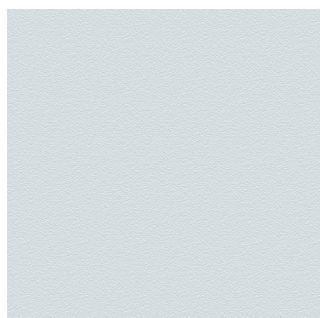
#### Note

All tiles in the Monochrome range can be used in conjunction with all existing Prismatics colours, finishes and sizes – 200 x 200mm, 200 x 100mm, 150 x 150mm and 100 x 100mm.

---

 **Three finishes**, combining both form and function.

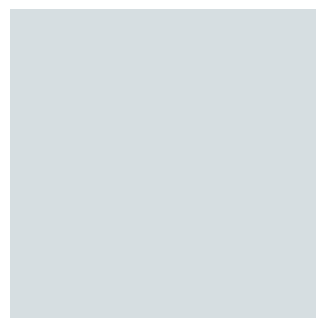
Examples below are not to scale but have been enlarged to show detail:



Natural



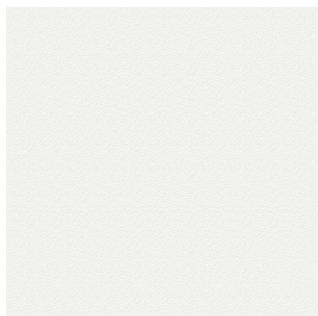
Gloss



Satin

## Four colours, offering a neutral and monochrome palette.

For the most up-to-date availability information, please visit our website.



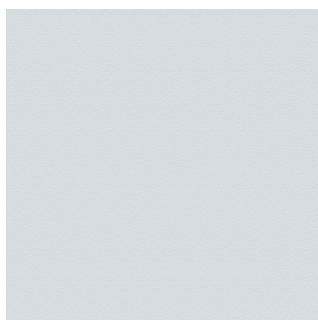
White

PEI IV

### White

Sizes	Finishes		
	Natural	Gloss	Satin
200 x 100mm	-	PRG1	PRS12
150 x 150mm	MNCR1N	PRG1	PRS12

Note: The PEI test result only applies to the Natural finish.



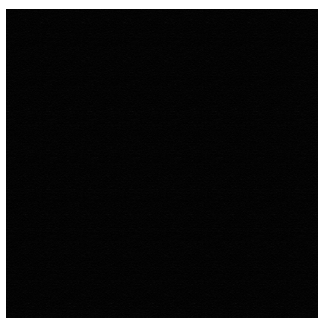
Grey

PEI IV

### Grey

Sizes	Finishes		
	Natural	Gloss	Satin
200 x 100mm	-	PRG11	PRS15
150 x 150mm	MNCR2N	PRG11	PRS15

Note: The PEI test result only applies to the Natural finish.



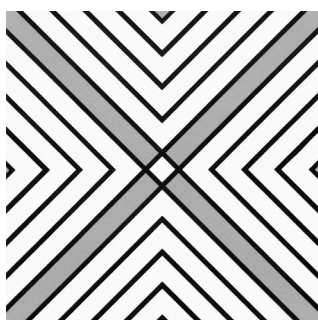
Black

PEI III

### Black

Sizes	Finishes		
	Natural	Gloss	Satin
200 x 100mm	-	PRG6	PRS13
150 x 150mm	MNCR3N	PRG6	PRS13

Note: The PEI test result only applies to the Natural finish.



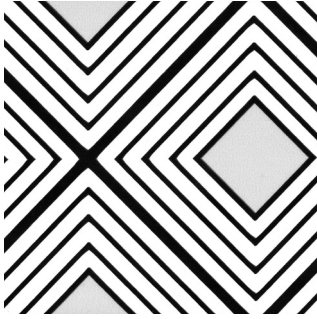
Monochrome Décor

PEI IV

### Monochrome Décor

Size	Finish
	Natural
150 x 150mm	MNCR1D





Monochrome Border

## Monochrome Border

Size

200 x 100mm

Finish

Gloss

MNCR1A



Monochrome Border Gloss 200 x 100mm





Monochrome White Satin and Natural, Black Satin and Monochrome Décor 150 x 150mm with Monochrome Border Gloss 200 x 100mm



**Monochrome**, a simple collection of ceramic and porcelain wall and floor tiles, featuring a palette of three neutral colours with accompanying co-ordinating décor options.

For more details on suitability, or advice on any technical issues, please contact our technical helpline below.

## Specification

200 x 100mm and 150 x 150mm

Wall	Floor	Shade Variation	Material	Finish
Internal	-	V I	Glazed Ceramic [BIII]	Gloss and Satin

150 x 150mm

Wall	Floor	Shade Variation	Material	Finish
Internal and External	Internal	V I	Glazed Porcelain [Bla]	Natural

## Floor Values - Natural

Colour	Pendulum 4S	R Value	Wet Ramp	Wet Barefoot	Traffic
All Colours	Dry 36+ Wet 36+	R 10	-	-	Commercial

Due to the manufacturing process of all floor tiles there may be small variations in slip resistance. Given this, we suggest you refer to our website or call our technical helpline for the most up-to-date information.

## Colour Notations

Colour	Code	NCS	LRV
Black	MNCR3N	8000-N	8
Black	PRG6	9000-N	4
Black	PRS13	8500-N	6
Grey	MNCR2N	2500-N	50
Grey	PRG11 / PRS15	2002-G50Y	57
White	MNCR1N / PRG1	0500-N	86
White	PRS12	0603-Y80R	81

**Note:** These results are from Johnson Tiles' internal test reports and are to be used for guidance only. LRV: Light Reflectance Value (Reflectance Y).

Due to the colour variation of MNCR1D Monochrome Décor and MNCR1A Monochrome Border, accurate NCS and LRV readings cannot be calculated. For further information, please contact our technical helpline below.

Front Cover Image: **Monochrome White Satin, Black Satin 150 x 150mm with Monochrome Border Gloss 200 x 100mm**

## Samples

Tel: +44 (0)1782 524043  
Fax: +44 (0)1782 577379  
Email: [samples@johnson-tiles.com](mailto:samples@johnson-tiles.com)

## Technical Helpline

Tel: +44 (0)1782 524111  
Fax: +44 (0)1782 577379  
Email: [techadvice@johnson-tiles.com](mailto:techadvice@johnson-tiles.com)

