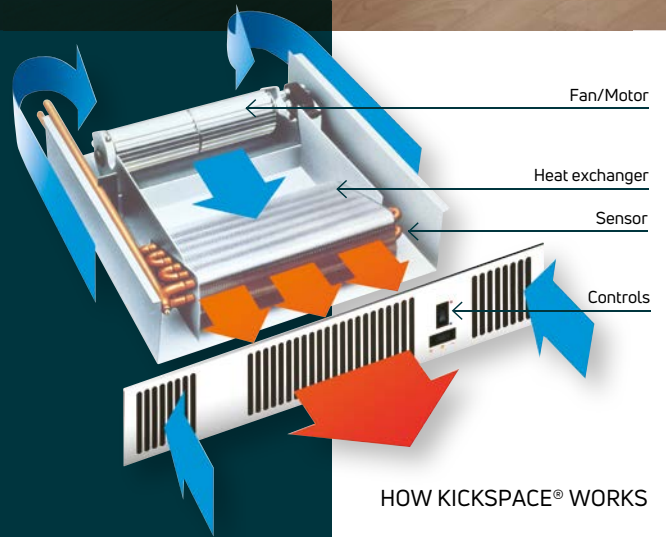




KICKSPACE®



HOW KICKSPACE® WORKS

Clever by design, MYSON's innovative, plinth heaters provide a space saving heating solution for kitchens where vital wall space is often taken up by a traditional radiator. The discrete KICKSPACE® can be fitted easily under units allowing more interior design freedom and rapid space heating using a high surface area heat exchanger.

NEW & IMPROVED



Electric - KICKSPACE® 500E & 600E ECO

The electric KICKSPACE® is perfect for properties without a central heating system or in rooms where there is no existing pipework. Quick and easy to fit, the 500E ECO can provide a heat output up to 2kW while the 600E ECO is up to 3kW.



500E & 600E ECO

Duo - KICKSPACE® 500 DUO ECO

The KICKSPACE® 500 DUO ECO model combines the advantages of the hydronic and electric models, with the flexibility to switch between central heating and electric modes.



500 DUO ECO



**Wireless
Thermostat**
Supplied with
KICKSPACE® 500E,
600E & DUO ECO
models

Hydronic - KICKSPACE® 500, 600 & 800

The most popular range of KICKSPACE® are the hydronic models that integrate directly into the existing central heating system. These three models provide heat outputs from 1kW to 2.6kW, providing warmth for any room. The fan on these models will activate with the central heating system.

Low voltage hydronic - KICKSPACE® 600-12V

This unique model means you get all the advantages of KICKSPACE® but it can be used in areas of high humidity, such as bathrooms and en-suites.



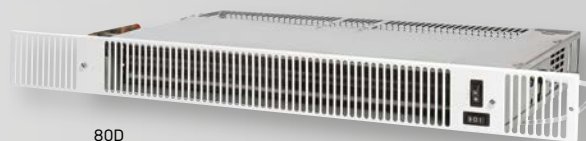
500

Hydronic - KICKSPACE® 80S & 80D

The KICKSPACE® 80S and 80D are a lower height and suitable for Ikea and European style kitchen units. They have all the features of the KICKSPACE® and come in a single and double width for extra output.



80S



80D

KICKSPACE®

Controls & accessories

Hydronic controls



Electric/Duo* controls



*DUO = Electric/Hot Water

KICKSPACE® Grilles

KICKSPACE® grilles are available in four finishes, white, black, chrome and brushed stainless steel. All KICKSPACE® models are supplied with white grilles however alternative finishes can be purchased separately.

External Thermostatic Controls suitable for Hydronic KICKSPACE® (500, 600, 600-12V, 800, 80S and 80D)

The following range of controls are compatible with our hydronic KICKSPACE® models:

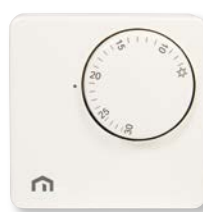
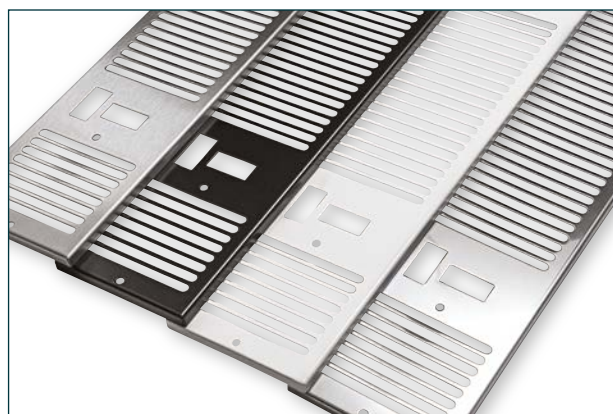
MRT1 - Room Thermostat is an analogue dial thermostat, for more information please refer to page 248.

MPRT - Programmable Room Thermostat is an easy to use digital programmable thermostat that incorporates our Smart Start technology, for more information please refer to page 251.

TOUCH - A touch screen programmable thermostat that incorporates our Smart Start Technology, for more information please refer to page 252.

TOUCH2 WiFi - Second generation touch screen thermostats with touch sensitive controls giving you the ability to control over WiFi from your smart phone**, for more information please refer to page 253.

**TOUCH2 WiFi Hub required for WiFi control - purchased separately.



MRT1



MPRT



TOUCH



TOUCH2 WiFi

For wiring information please visit www.myson.co.uk, go to your chosen KICKSPACE® product page via the fan convector tab and click downloads.

KICKSPACE®

General specification & technical information



CERTIFICATION

Produced under a quality management system - ISO 9001:2015, environmental management system - ISO 14001:2015 and Occupational health and safety management system - ISO 45001:2018. Carries the CE mark and conforms to the Low Voltage Directive 2014/35/EU and the EMC Directive 2014/30/EU. Hydronic/Duo outputs are tested to BS 4856 Part 1. Sound levels are tested to EN 23741. Electric and Duo models are also tested to RED 2014/53/EU. BEAB Approved.



GUARANTEE

2 year guarantee from date of purchase against manufacturing defects.



COLOUR

Supplied grilles finished in white (RAL 9016). Black (RAL 9011), chrome and brushed stainless steel can be purchased separately.



ACCESSORIES

Optional coloured grilles are available for the full KICKSPACE® range, please see page 147.

A range of controls are also available for KICKSPACE® 500, 600, 600-12V, 800, 80S & 80D, note they are currently not compatible with KICKSPACE® Electric or Duo models, for more information please refer to page 144.



SYSTEM

Closed circulation, 2 pipe pump assisted central heating systems.



CONNECTIONS

Hydronic/Duo: 15mm copper pipes.
Compression: Compression fitting flexible hoses supplied.



AIR VENTS

Integrated (Hydronic/Duo only).



OPERATING PRESSURES

Hydronic/Duo - tested to a pressure of 20 bar, working pressure of up to 10 bar.



OPERATING TEMPERATURE

Hydronic/Duo - maximum 90°C.



ELECTRICAL SUPPLY

220-240V-50Hz.
KICKSPACE® 500, 600, 600-12V, 800, 80S & 80D require a supply fused at 3A.
KICKSPACE® 500 DUO ECO requires a supply fused at 5A.
KICKSPACE® 500E ECO requires a supply fused at 10A.
KICKSPACE® 600E ECO requires a supply fused at 13A.



DELIVERY

2 - 5 working days.



ECO DESIGN DIRECTIVE

Electric and Duo models conform to the standards (EU) 2015/1188.

For more general information, please see page 260.

Hydronic models

		Fan Speed	Model						
			500	600	800	600-12V	500 DUO ECO	80S	80D
Dimensions	Nominal Height (mm)	-	101	101	101	101	101	80	80
	Depth (mm)	-	309	309	309	309	330	301	301
	Length (mm)	-	496	550	603	550	496	560	760
Sound Levels*	Sound Pressure (dBA) (at 2.5m)	Normal	25.7	26.4	28.5	29.4	25.7	24.5	21.8
		Boost	38.1	37.2	49.8	39.0	38.1	31.4	35.6
Weight, Water Content & Motor Power	Unit Weight (kg)	-	4.3	5.0	5.5	7.9†	4.3	3.83	5.13
	Water Content (l)	-	0.26	0.30	0.34	0.30	0.26	0.17	0.25
	Motor Power (W - max.)	-	25	40	40	40	25	13	17
Air Flow Rates	Air Flow (m³/h)	Normal	70	106	139	106	70	68	87
		Boost	90	138	210	138	90	71	90
	Air Flow (ft³/h)	Normal	2471	3742	4908	3742	2471	2313	3192
		Boost	3177	4872	7415	4872	3117	2511	3069
		ltr/h	Model						
			500	600	800	600-12V	500 DUO ECO	80S	80D
Approximate Hydraulic Resistance	mm wg	455	788	1046	911	1046	788	592	613
		340	488	625	544	625	488	372	439
		227	231	326	258	326	231	207	295
	kPa	113	82	95	82	95	82	95	176
		455	7.7	10.3	8.9	10.3	7.7	5.8	6.0
		340	4.8	6.1	5.3	6.1	4.8	3.6	4.3
		227	2.3	3.2	2.5	3.2	2.3	2.0	2.9
		113	0.8	0.9	0.8	0.9	0.8	0.9	1.7

*Sound levels tested in accordance with EN 23741.

†Includes transformer.

KICKSPACE®

Technical information (cont...)

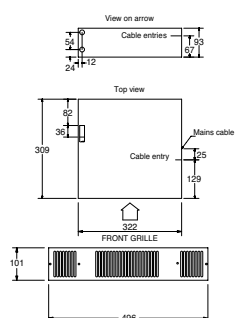
Electric models

		Fan Speed	Model	
			500E ECO	600E ECO
Dimensions	Nominal Height (mm)	-	101	101
	Nominal Depth (mm)	-	203	203
	Nominal Length (mm)	-	496	550
Sound Levels*	Sound Pressure (dBA) (at 2.5m)	Normal	25.7	26.4
		Boost	38.1	37.2
Weight	Unit Weight (kg)	-	3.1	3.6
Air Flow Rates	Air Flow (m³/h)	Normal	70	106
		Boost	90	138
	Air Flow (ft³/h)	Normal	2471	3742
		Boost	3177	4872

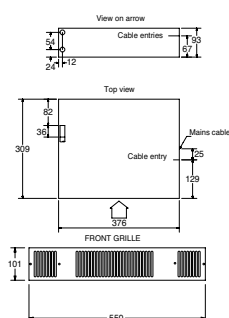
*Sound levels tested in accordance with EN 23741.

Dimensions

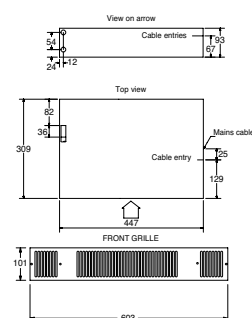
KICKSPACE® 500



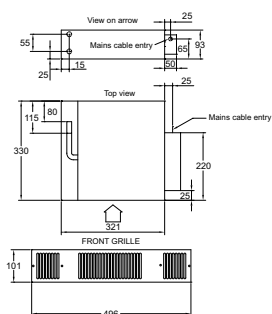
KICKSPACE® 600/600-12v



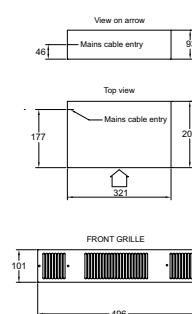
KICKSPACE® 800



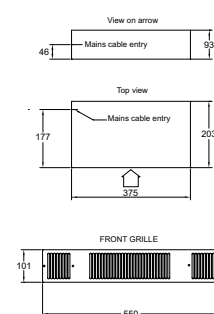
KICKSPACE® 500 DUO ECO



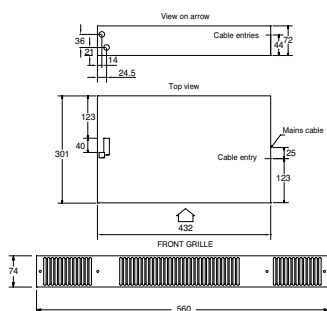
KICKSPACE® 500E ECO



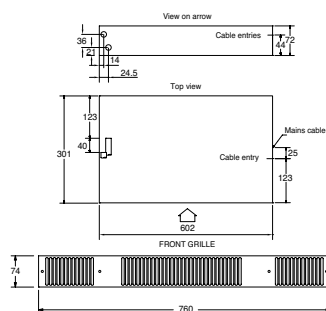
KICKSPACE® 600E ECO



KICKSPACE® 80S



KICKSPACE® 80D



N.B: Add 4.5mm to the chassis height of the above models to allow for rubber mountings and screws.

KICKSPACE®

Heat outputs

Hydronic models

Model	Fan Speed	Heat Outputs @ ΔT 50°C		Heat Outputs @ ΔT 30°C		Grille Supplied	Order Code
		Watts	Btu/h	Watts	Btu/h		
KICKSPACE® 500	Normal	896	3057	566	1930	White	3KICK500
	Boost	1166	3980	683	2331		
KICKSPACE® 600	Normal	1278	4361	729	2486	White	3KICK600
	Boost	1625	5545	939	3203		
KICKSPACE® 800	Normal	1707	5824	1077	3675	White	3KICK800
	Boost	2192	7478	1289	4397		
KICKSPACE® 80S	Normal	755	2576	455	1552	White	3KICK80S
	Boost	876	2989	509	1737		
KICKSPACE® 80D	Normal	1023	3490	624	2129	White	3KICK80D
	Boost	1169	3989	707	2412		

Low voltage hydronic model

KICKSPACE® 600-12V	Normal	1278	4361	729	2486	White	3KICK60012V
	Boost	1625	5545	939	3203		

Hydronic-electric model

KICKSPACE® 500 DUO ECO*	Normal	896	3057	566	1930	White	3KICK500DUOECO
	Boost	1166	3980	683	2331		

Heat outputs tested in accordance with BS 4856 Part 1.

*The unit will operate on either fan speed to provide 1kW of heating in electric mode.

Flow Rate: 340 ltr/h (75 gal/h)

Flow Rate Correction Factors:

455 ltr/h (100 gal/h) multiply output by 1.03

227 ltr/h (50 gal/h) multiply output by 0.96

113 ltr/h (25 gal/h) multiply output by 0.85

Electric models

Model	Fan Speed	Heat Outputs		Grille Supplied	Order Code
		Watts	Btu/h		
KICKSPACE® 500E ECO	Normal	1000	3412	White	3KICK500EECO
	Boost	2000	6824		
KICKSPACE® 600E ECO	Normal	1500	5118	White	3KICK600EECO
	Boost	3000	10236		

KICKSPACE® grilles

Colour	Order Code - KICKSPACE® Model						
	500	600 / 600-12V	800	500E ECO / 500 DUO ECO	600E ECO	80S	80D
White	WG500	WG600	3WG800	EWG500	EWG600	WG80S	WG80D
Black	BLG500	BLG600	3BLG800	EBLG500	EBLG600	BLG80S	BLG80D
Chrome	CG500	CG600	3CG800	ECG500	ECG600	CG80S	CG80D
Brushed Stainless Steel	BSG500	BSG600	3BSG800	EBSG500	EBSG600	BSG80S	BSG80D

KICKSPACE® controls & accessories

Product	Order Code
MRT1 Room Thermostat	MRT1
MRT1 Room Thermostat (Braille Version)	MRT1BRAILLE
MPRT Programmable Room Thermostat	MPRT
MPRT Programmable Room Thermostat, Chrome Fascia	MPRTCR
TOUCH Screen Programmable Room Thermostat	TOUCH
TOUCH2 WiFi Touch Pad Programmable Room Thermostat for 'Smart Phone' Control & Control Hub	T2AHWIFI
TOUCH2 WiFi Touch Pad Programmable Room Thermostat for 'Smart Phone' Control	T2WIFI
KICKSPACE® Flexible Hoses (Pair)	FP