

# Type A & C Waterproofing

## AC-22 SPECIFICATION SHEET

### Internal Waterproofing of Underpinning

Rev 4.0 - 14 August 2023

#### BUILD

#### WALL CONSTRUCTION:

Underpinned existing structure

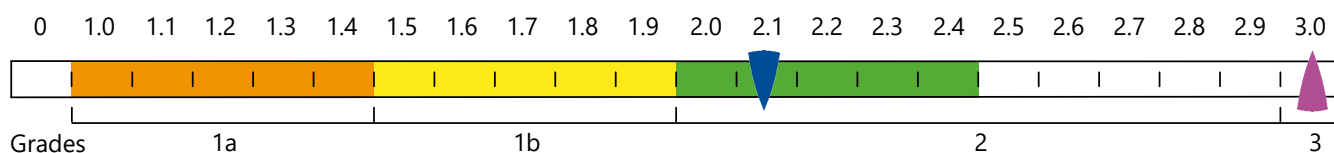
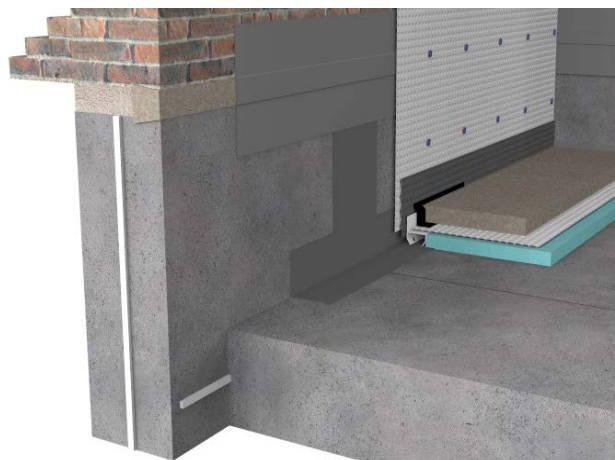
#### FLOOR CONSTRUCTION:

Reinforced Concrete (RC) Slab


#### NWI SCALE

Waterproofing solutions can only achieve environmental Grades 1a, 1b or 2.

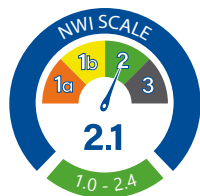
Refer to page 5 of the Newton Design Philosophy.



 NWI Score when ventilation has not been included.

 Ventilation, dehumidification or air conditioning is necessary; appropriate to intended use to achieve Grade 3 - BS 8102:2022.

This specification employs 2 forms of waterproofing (Type A - Barrier Protection) to prevent ground water passing through the structural elements of the building and (Type C - Drained Protection) to ensure that the desired internal environment is achieved. The success of the waterproofing is dependent on the Type A system being effective at controlling the quantity of water passing through the structure so as not to inundate the Type C. There is therefore also a reliance on the Type C system being designed and installed correctly.



#### SPECIFICATION

#### ANCILLARIES

Install appropriate Newton waterbars to all construction joints and service penetrations.

#### TYPE A APPLIED INTERNALLY

Waterproof the construction joints with a band of [Newton HydroCoat System](#) providing barrier protection.

#### TYPE C INSTALLED INTERNALLY

Waterproof internally with [Newton CDM System](#) providing drained protection.

#### NEWTON WATERPROOFING INDEX

The Newton Waterproofing Index (NWI) is a unique scoring system that accurately assesses the level of risk and potential success of specific waterproofing specifications. The NWI score is awarded by a panel of experienced waterproofing design specialists and reflects the chances of success of that specification. The scoring system works in conjunction with the British Standard for waterproofing, which defines the three types of internal environments as Grades 1a, 1b, 2 and 3.

#### NOTES

To improve the NWI score please see Newton Specification Sheet E-AC-01.

The detailing of other building elements and termination details are available within the Newton Waterproofing specification library.

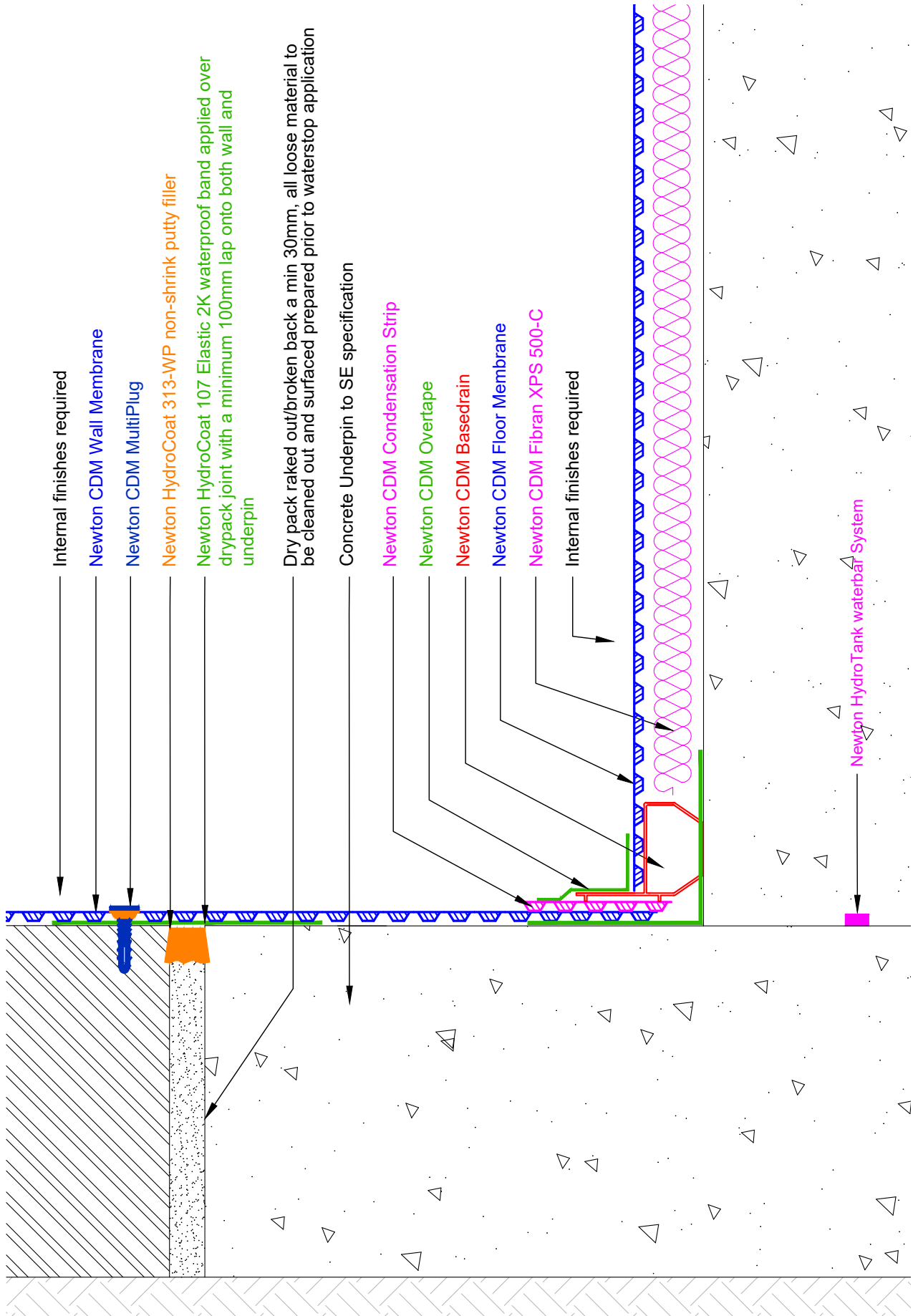
#### A-RATED INSURANCE

Tailor made insurance policies available depending on the specialist contractor and specification.

Any specification/advice provided is only valid if used with products supplied by John Newton and Company Ltd (trading as Newton Waterproofing Systems). Newton Waterproofing Systems reserve the right to update product literature at any time. Please always refer to our website for the latest versions.

# AC-22

## Internal Waterproofing of Underpinning



# Type A Waterproofing

## AC-22 SPECIFICATION OUTLINE

### Internal Waterproofing of Underpinning

#### Specification

#### Description

#### Build

#### NEWTON HYDROCOAT SYSTEM

#### NEWTON HYDROTANK SYSTEM

#### NEWTON CDM SYSTEM

#### AC-22

Combined waterproofing to underpinning. No gas protection.

Underpinning, with reinforced reinforced concrete slab to BS EN 1992.

an internal Type A waterproofing solution for projects that requires an internally applied membrane to resist water ingress.

All construction joints (day joints, shrinkage joints, movement joints etc) should be waterproofed with Newton HydroTank System waterbars to limit water ingress thorough joints in the structure.

Maintainable basement waterproofing solution ideal for new-build basements and refurbishment projects. Comprises four components: Cavity Drain Membranes, Drainage, Pumps and Control Systems. Complies with the British Standard for Waterproofing.