

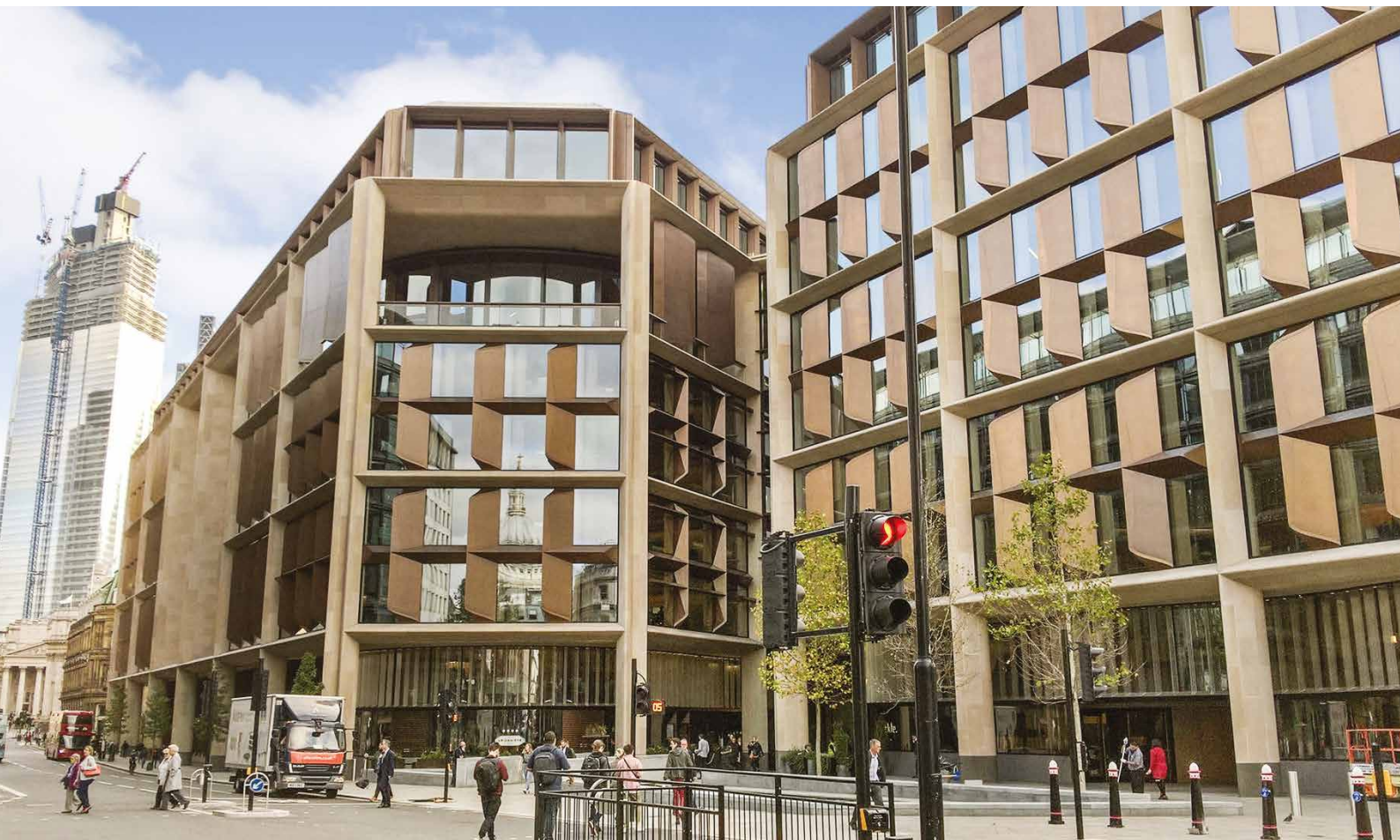
DUST SUPPRESSANT PRODUCTS

KEIM Lotexan - KEIM Lotexan is a clear, siloxane based water repellent and dust suppressant treatment for use on alkaline mineral substrates such as concrete, render, natural stone and brickwork.

When applied onto mineral surfaces, KEIM Lotexan soaks into the substrate and, having a small molecular size, coats the pores of the mineral structure without blocking them. A chemical reaction takes place, creating the water shedding properties of the siloxane, imparting excellent water repellence while maintaining moisture vapour permeability through the open pores.

KEIM Ecotec - KEIM Ecotec is an environmentally friendly, solvent free, colourless water repellent and dust suppressant. KEIM Ecotec is a concentrated hydro-phobing silicone micro-emulsion, diluted with water, which reduces water absorption.

KEIM Fixativ - KEIM Fixativ is a silicate binding agent and dust suppressant which reacts chemically to consolidate the surface. KEIM Fixativ is water vapour permeable and is suitable for external and internal use on surfaces with light chalking and dusting.



DUST SUPPRESSANT

TECHNICAL INFORMATION

| Product | KEIM Lotexan | KEIM Ecotec | KEIM Fixativ |
|--|---|--|---|
| 1. Field of Application | KEIM Lotexan are siloxane based water repellent impregnations to reduce the water absorption of mineral surfaces. Also used as a dust suppressants. | KEIM Ecotec is a solvent free, silicone micro-emulsion based hydrocarbon concentrate for use as an environmentally friendly water repellent and dust suppressant. | KEIM Fixativ is a silicate binding and fixing agent made from pure, liquid potassium silicate which can be used as a dust suppressant. |
| 2. Product Properties | <ul style="list-style-type: none"> • Water vapour permeable • Does not change substrate colour • Long life performance • KEIM Lotexan for alkaline substrates and natural stone | <ul style="list-style-type: none"> • Water vapour permeable • Does not change substrate colour • Environmentally friendly • Low VOC • Solvent free, dilute with water | <ul style="list-style-type: none"> • Water vapour permeable • Does not change substrate colour • Consolidates the surface • UV and weather resistant • Environmentally friendly, non toxic • Odourless • Low environmental impact building material • Cradle to Cradle Certified® |
| 3. Application Instructions (onto clean dry surfaces) | KEIM Lotexan should be applied as a two coat system, by low pressure spray or brush, with a period of approximately 10 minutes between coats. | KEIM Ecotec should be mixed to a ratio of 1:9 with water (1 part KEIM Ecotec to 9 parts water). Applied with low pressure spray as a flood coat, or saturated with a brush from top to bottom. | KEIM Fixativ should be applied as a single coat, diluted 50:50 with clean cold water and applied by brush or low pressure spray. |
| Cleaning of tools | Clean immediately after use with solvent. | Clean immediately after use with water. | Clean immediately after use with water. |
| Consumption * | 0.2lt/m ² for two coats as a dust suppressant. | Dependant on the capillary absorbency of surface, between 0.2lt/m ² and 0.8lt/m ² (premixed). The proportion of KEIM Ecotec equates to 0.02lt/m ² – 0.08lt/m ² . | 0.1lt/m ² of KEIM Fixativ (and 0.1lt/m ² of water) |
| Packaging | 5 lt containers | 1 lt container | 4 lt containers |

*Please note all consumption rates given in the technical information section are offered for guideline purposes and are quoted for smooth surfaces. Actual rates are the responsibility of the applicator. Project specifications should be referred to for specific rates.