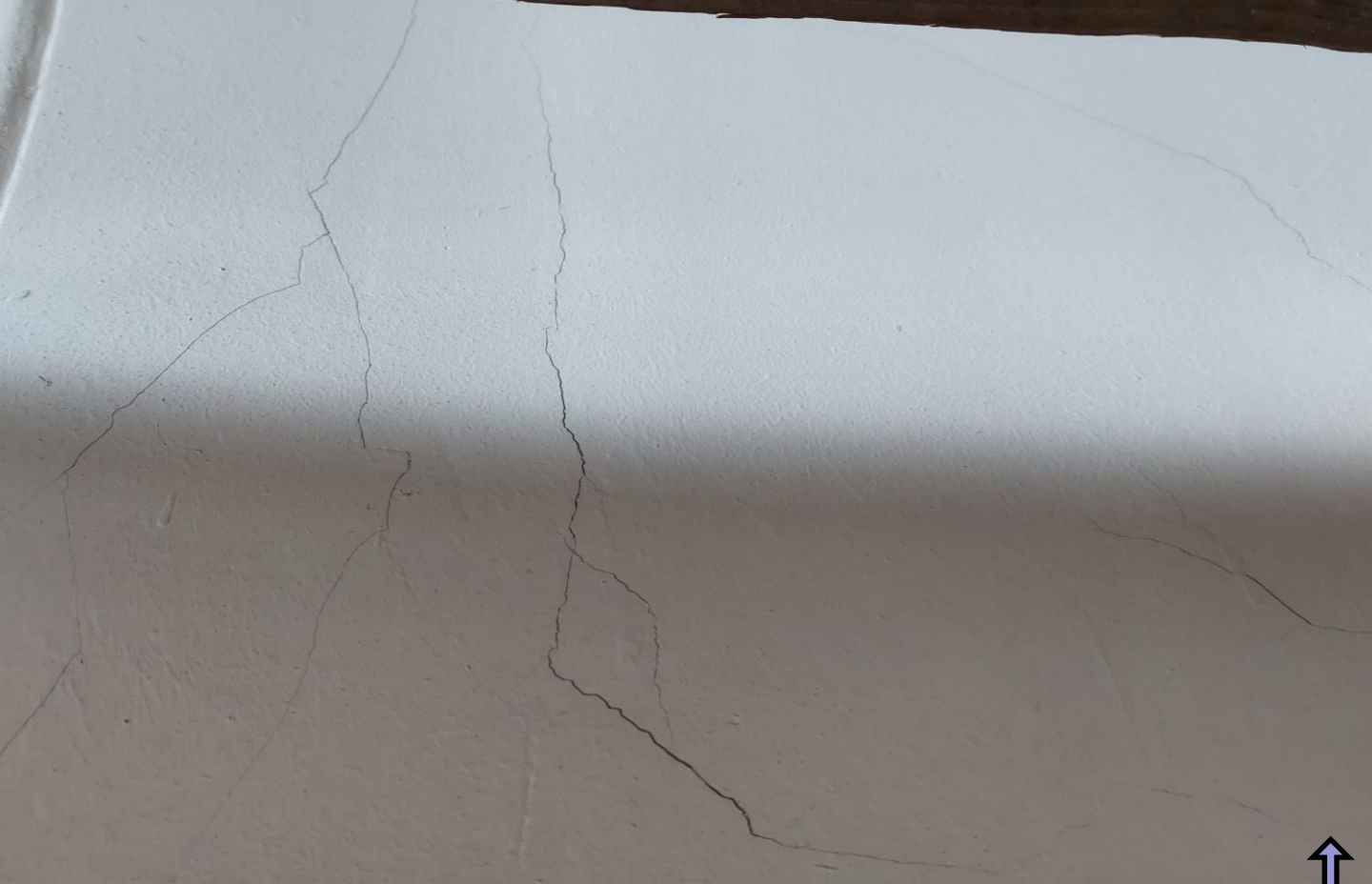


## KEIM MINERAL PAINTS CASE STUDY: ST ANDREW BY THE WARDROBE

KEIM OPTIL® ONTO PREVIOUSLY PAINTED SURFACES



Before



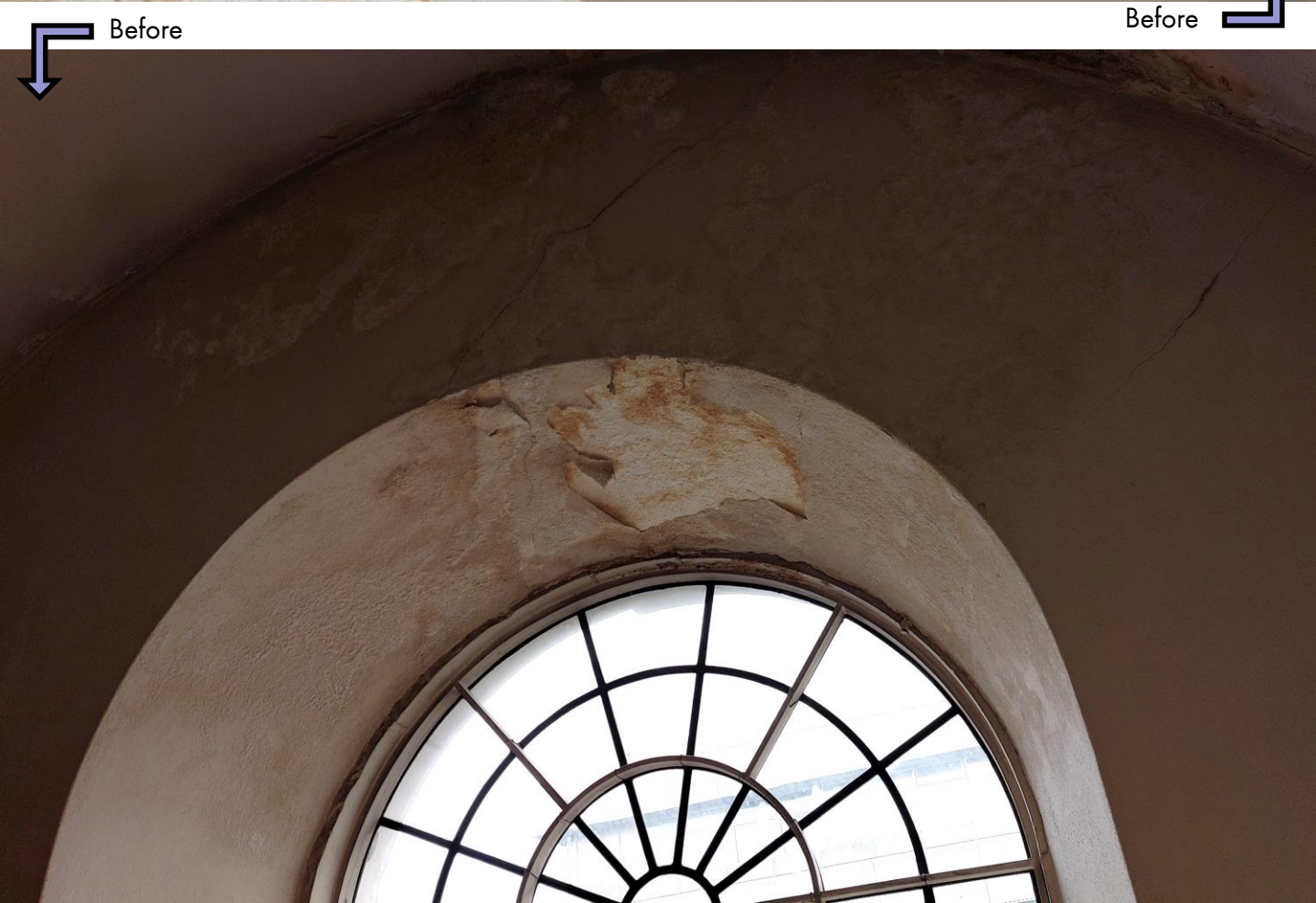
Before







Before



Before





Before



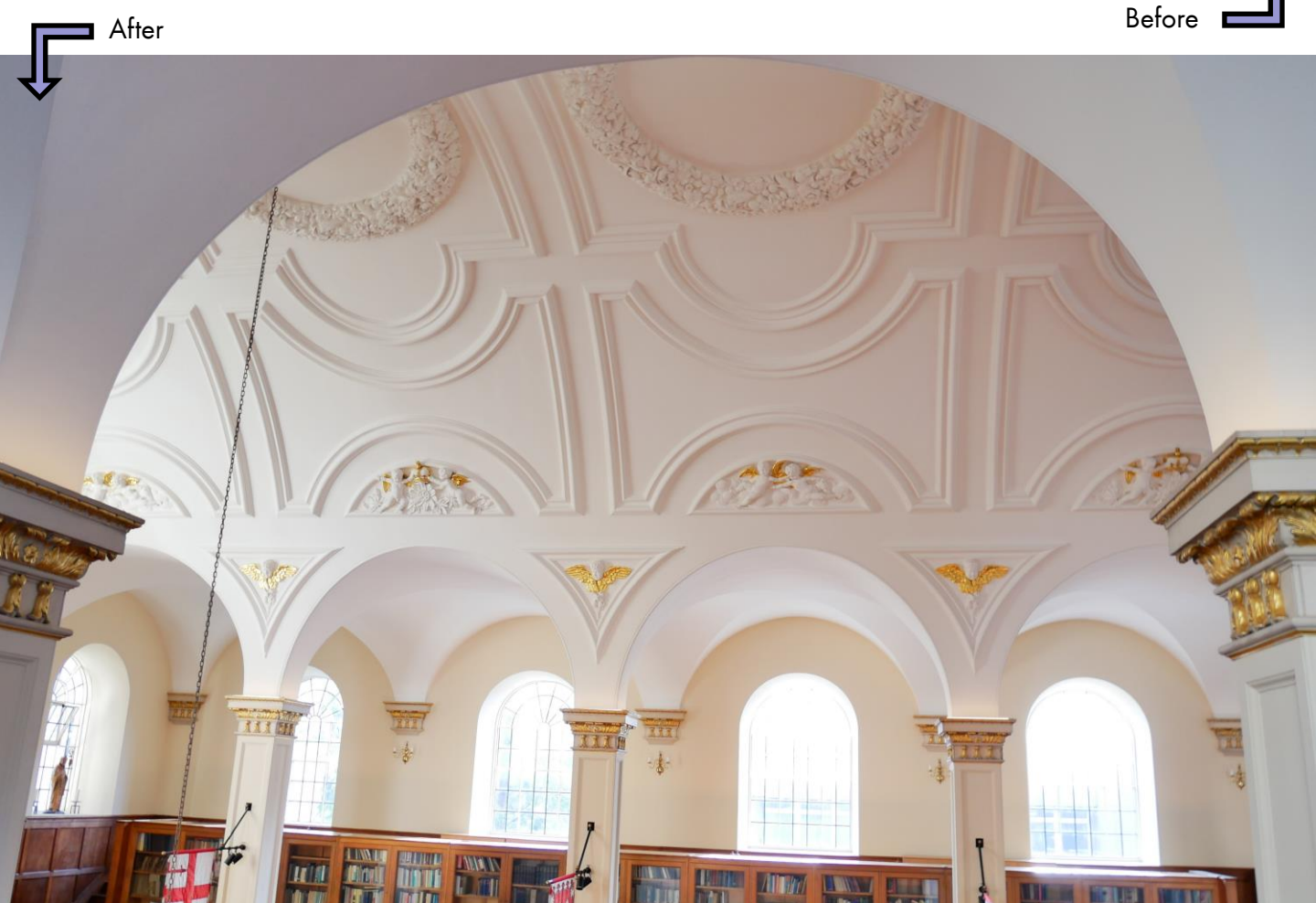
After







Before



After

After





After





After





# ST ANDREW BY THE WARDROBE, LONDON

Originally built in the 12<sup>th</sup> century, St Andrew by the Wardrobe is a historic church located on St Andrews Hill, London. It was rebuilt by Sir Christopher Wren after the Great Fire of London in 1666. Known for its cultural significance and architectural beauty, the church is named after the royal wardrobe that was housed nearby in medieval times.

The Grade I listed church has undergone several restoration efforts to maintain its heritage. In 2023, the church faced challenges with its interior walls, including issues with cracking, damp and discolouration. KEIM Mineral Paints were chosen for the restoration due to its proven performance on churches and historic buildings.

All previously painted surfaces were thoroughly cleaned and filled using KEIM Dolomitspachtel in readiness for redecoration. KEIM IF Primer was applied onto areas that were stained, with KEIM GW Primer covering all surfaces to equalise the repaired surfaces and to bridge and fill hairline cracks. This created a good base for KEIM Optil to be applied in two bespoke colours consisting of soft, neutral tones, reflecting the original design intent of Sir Christopher Wren's era.

The use of KEIM Mineral Paints in the restoration of St Andrew by the Wardrobe demonstrates our suitability for historic preservation projects. By providing a breathable, durable, and aesthetically appropriate finish, KEIM paints contribute to its long-term preservation.



# WHAT IS KEIM OPTIL®?

KEIM Optil® is a mineral premium quality paint specifically formulated for elegant interior applications, giving intense, lightfast colour shades.

## Key features & benefits:

- Breathable
- Water vapour permeable
- Resists algal and fungal growth
- Non flammable - A2-s1, d0
- Lightfast
- UV stable
- Mineral matt
- Low VOC
- Odourless
- Easy and safe application
- [Natureplus Certification](#)
- Cradle to Cradle Certified®

KEIM Ecosil Grund® (GW-Primer) is a base coat to equalise different absorbencies on repaired or filled surfaces, as well as a base coat for use on plasterboard and sound previously painted surfaces.

KEIM Dolomitspachtel® is a ready to use silicate filler suitable for small crack repair and surface equalisation onto internal mineral surfaces.

KEIM I.G. Primer® (IF-Primer) is a colourless primer with good water vapour permeability used to obliterate staining.





# CREDITS

---

**Specifier:** Bob Wilson Consultancy

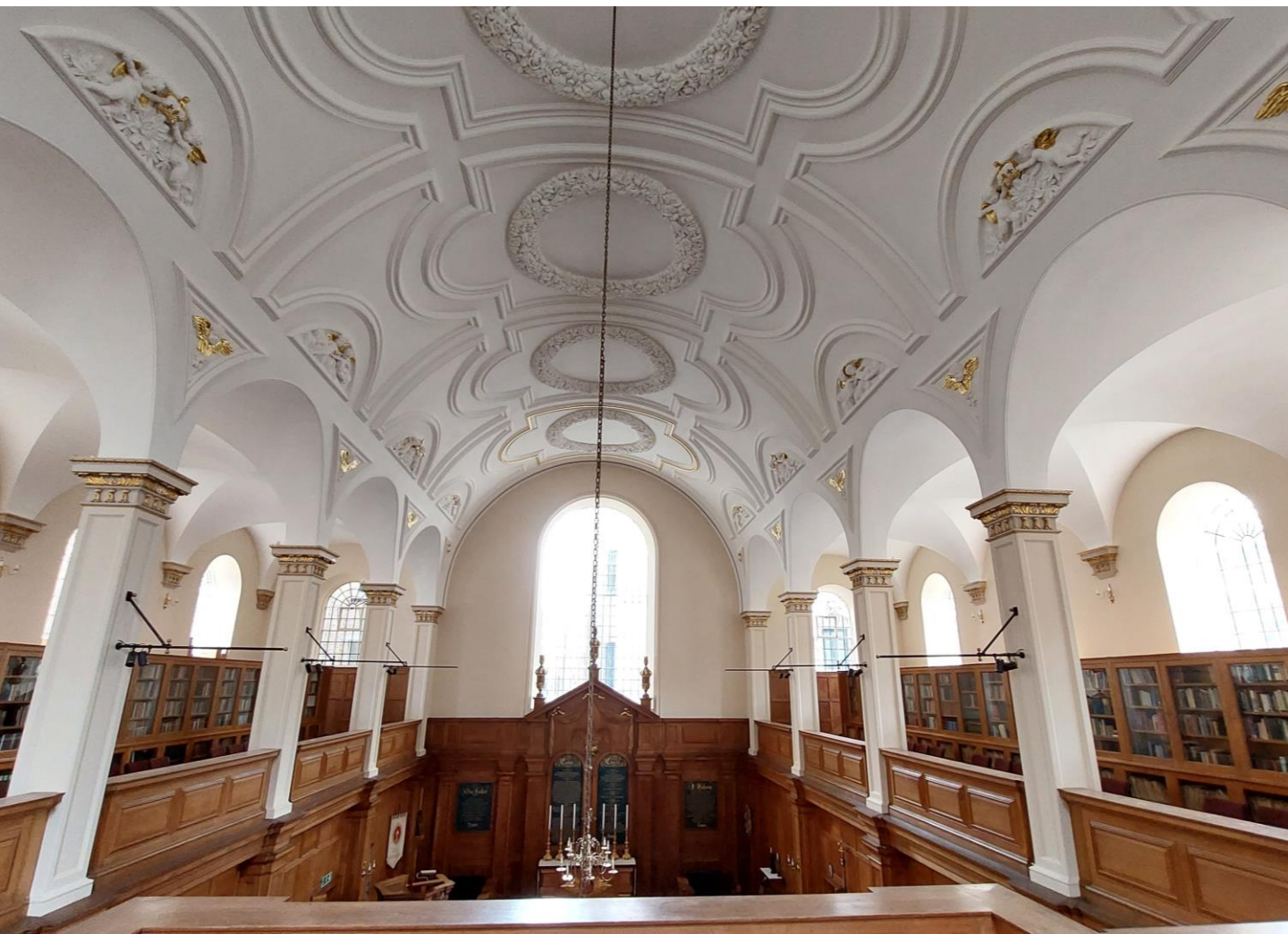
**Main contractor:** Universal Stone

**Decorator:** Paint The Town Green

**Location:** St Andrew by the Wardrobe, St Andrew's Hill, Queen Victoria Street, London, EC4V 5DE

**Project photographs:** KEIM Mineral Paints Ltd

**Completed:** 2023





KEIM MINERAL PAINTS LTD.  
Santok Building, Deer Park Way, Donnington Wood  
Telford, Shropshire, TF2 7NA  
01952 231250 / [www.KEIM.com](http://www.KEIM.com) / [sales@KEIMpaints.co.uk](mailto:sales@KEIMpaints.co.uk)

KEIM. COLOURS FOR EVER.