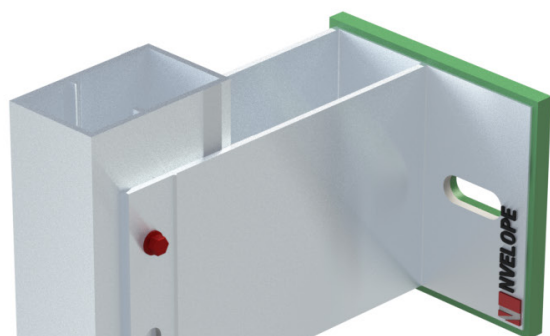
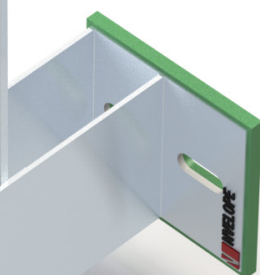


SFS



NVF2F

The new innovation: enables rainscreen cladding with floor to floor spanning



NVF2F

Floor to Floor

NVELOPE NVF2F is a vertical back frame system for floor to floor spanning, specifically suited to face fixing and rivet fixing cladding. NVF2F can be used in conjunction with concealed fix systems NV3, NV4, NV5 and NV8. Suitable for supporting fibre cement, high-pressure laminate (HPL), Aluminium Composite Material (ACM) and metal rainscreen panels.

Features

NVF2F is a vertical back frame system for floor to floor spanning.

Floor to floor (mullion) box 'T' profiles are fixed using support brackets. Our brackets absorb wind loading and allow for expansion and contraction, and vertical dead loads.

Bracket spacing is determined by factors such as the dimensions and weight of the façade cladding, local wind loads and cladding zone.

Material and standards

Manufactured from extruded aluminium alloys conforming to EN 573-3 (material) and EN 755 production standards.

Options

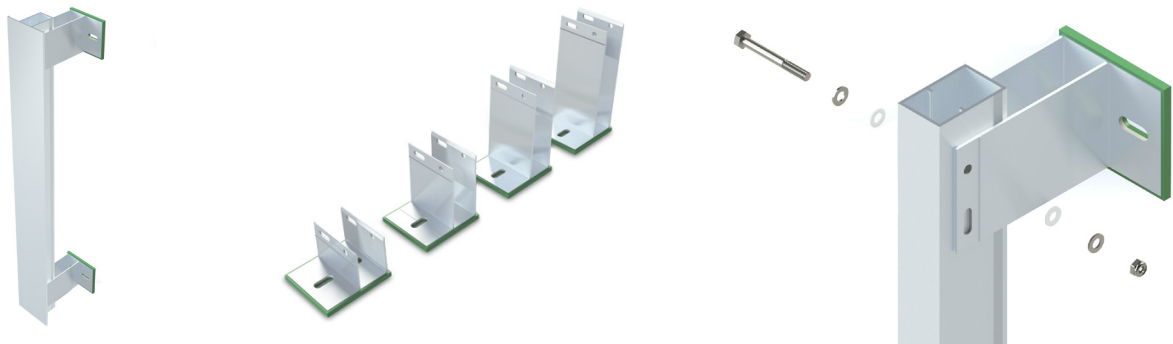
NVELOPE brackets: allow adjustment between the face of the primary support to outer face of vertical profile.

Thermal isolators: hard PVC isolator assembled as standard (located between the bracket and the primary structural support system) are available.



Product overview

NVF2F



Component	Bracket height (mm)	Bracket width (mm)	Reference
Bracket – Floor to Floor	72	110	01/F2F072
Bracket – Floor to Floor	122	110	01/F2F122
Bracket – Floor to Floor	172	110	01/F2F172
Bracket – Floor to Floor	222	110	01/F2F222
Floor to Floor (Mullion) box 'T' Rail – 75 × 125 mm	–	–	02/F2FBRT
Box (Transom) Rail – 75 × 46 mm	–	–	02/F2FBR
Spigot 200 mm – 60 × 47 mm	–	–	02/B40-40-200
End Plate/Transom Cleat	–	–	03/F2FCLEAT

Range of adjustment

Size (mm)	Min (mm)	Max (mm)
72	79	127
122	125	177
172	175	227
222	225	277

Try Project Builder

Project Builder is the faster route to specification, in just 3 easy steps:

- 1. Go to uk.sfs.com/connectsuite
- 2. Input project parameters
- 3. Receive a free project-specific PDF featuring pricing per M², static calculations, NBS specification and thermal values

Use Project Builder for your floor to floor project today at: uk.sfs.com/connectsuite

