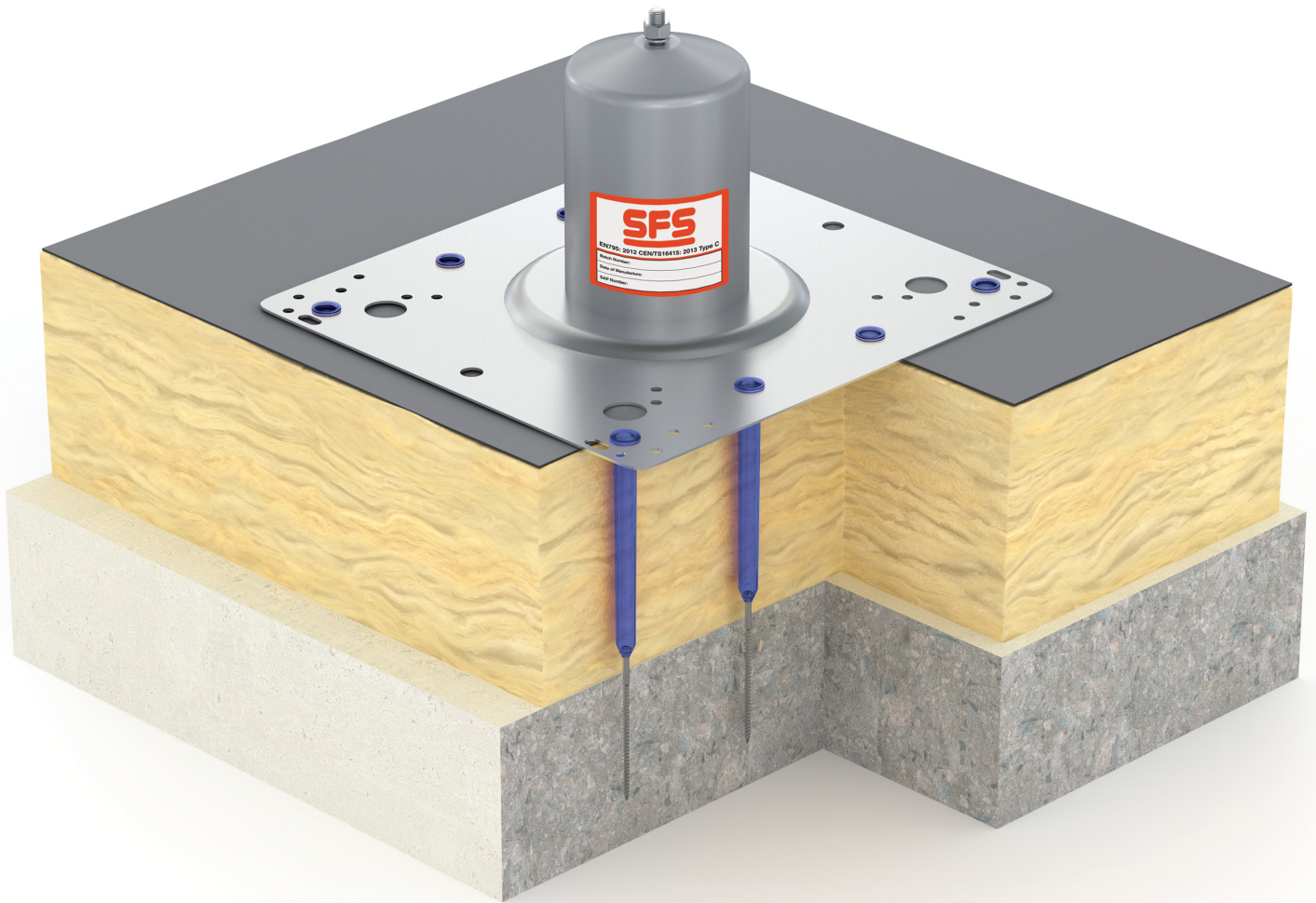




Soter™ II



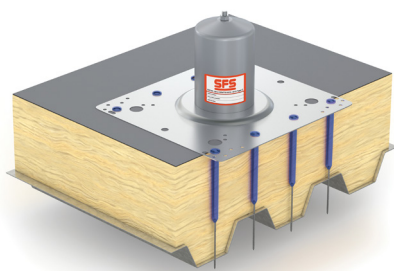
**Fall Protection
for Flat Roofing
Sleeve and Fastener
Solution**

Soter™ II

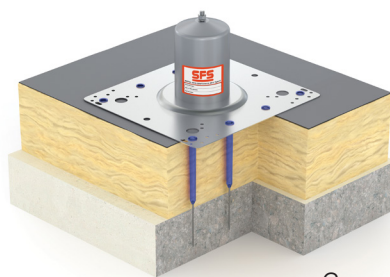
The new Soter™ II can be installed on flat roofs using a number of mechanical fixing methods. For speed, thermal performance and less hassle, we recommend using the sleeve and fastener option from SFS.

Secure fixing, versatile applications

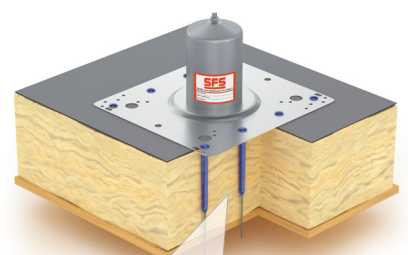
Sleeve and fasteners, combined with the Soter™ II Multi-use Baseplate provide secure fixing to metal, concrete, and timber decks. Multi-use Baseplates are available in PVC-coated and uncoated stainless steel.



Metal



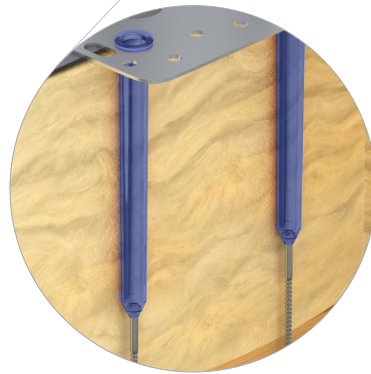
Concrete



Timber

Protected thermal values

The sleeve and fastener combination provides a thermally broken solution to ensure that roof U-values are maintained.



Fast and easy installation

The sleeve and fastener method increases speed and creates an easier installation. There is no risk of snagging the toggle fixing in fibre insulation, and no hassle getting the toggle clamp to deploy. Fasteners are also easy to undo - should you need to.

To find out more, visit: www.sfsintec.co.uk
or email: fallprotection@sfs.biz

Scan to see the difference for yourself

