

Complete Fire Protection Ltd

Manufacturers of Intumescent Products

FIREPLUG FPGH – HORIZONTAL INTUMESCENT BLOCK GRILLS

INTUMESCENT BLOCK GRILLS HEAVY DUTY - HORIZONTAL

Introduction

Fireplug FPGH Intumescent Grills are made to order so can be supplied in any size.

Fireplug FPG: Free air flow has been calculated to give a minimum of 50% for a 100 x 100mm - Rising to 76% and higher for a 300 x 300mm and upwards.

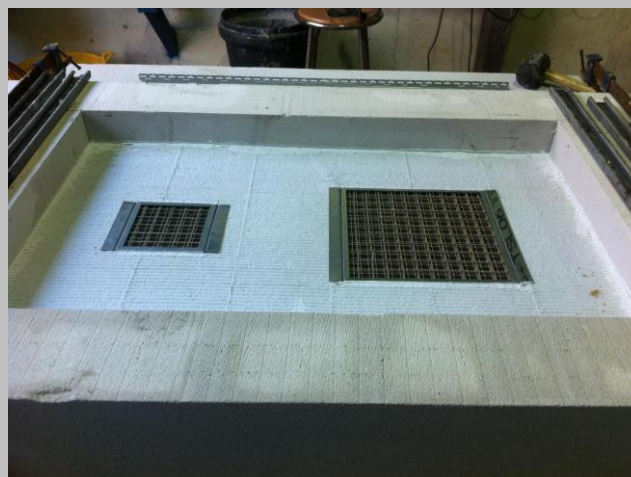
Action

Under the action of heat, the openings seal up to prevent the passage of hot gases and toxic fumes.

Installation

Fireplug FPGH are designed to suit ventilation shafts and under floor or above ceiling wall penetrations. White tape wrapping around the frame holds a 0.5mm thick intumescent strip in place. The intumescent will expand to seal any small gaps between the grill perimeter and mineral fibre batt or fire boards; however we recommend the mineral fibre batt is cut to ensure the intumescent grill fits tight on all sides.

A 25mm flange is present on two sides of the grill frame to ensure the intumescent grill does not fall through the mineral fibre batt or fire boards, we recommend the hole cut for the intumescent grill is located within a full piece of mineral fibre batt or board for maximum stability.



Application:

- Ventilation Shafts
- Under Floor / Above Ceiling
- Access Panels



Test documents available on request.

Visit Our Online Shop: www.cfpltd-shop.co.uk



Intumescent Fire Seals Association



Unit 2 Ferry Steps Industrial Estate, Albert Road, St Philips, Bristol BS2 0XW

Tel: 0117 9711917 Fax: 0117 9711727 Email: mail@cfpltd.co.uk Web Site www.cfpltd.co.uk Online Shop www.cfpltd-shop.co.uk