

# Forticretestone



## Cock and Hen Capping

Cock and Hen capping stones are typically seen in areas, such as the Cotswolds and Yorkshire, where a rough hewn stone is placed at right angles on the top of walls to improve weather resistance.

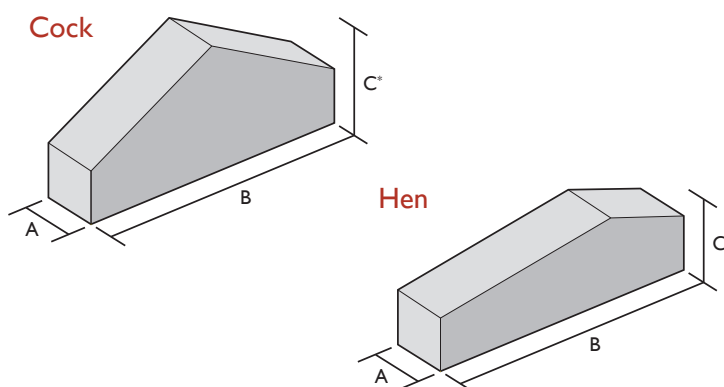




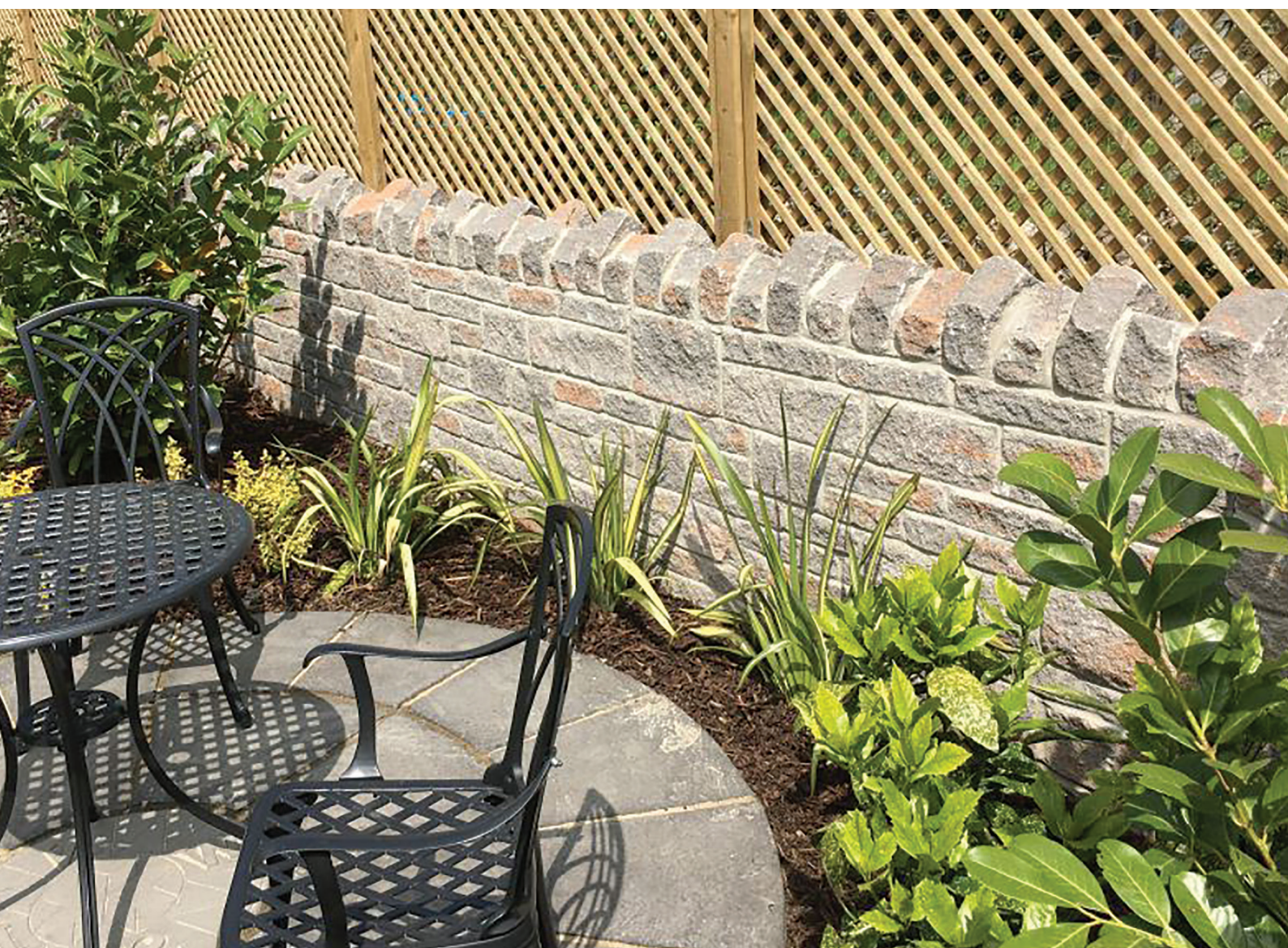
## Cock and Hen Capping Dimensions



Code	A	B	C	Weight (Kg)
Cock	100	225	200*	7Kg Approx
Hen	100	225	150*	5Kg Approx



\* A feature of these blocks is a variation in the height dimension and as such falls outside the tolerances stipulated in BS EN ISO 9001:2008. It is understood that the customer accepts these variations in placing an order.

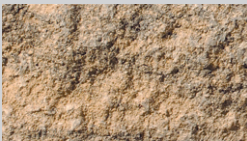






## Colour range

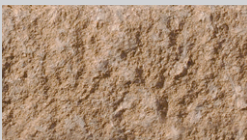
### Shearstone™



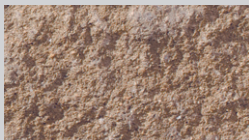
Blackmoor Olde Heather



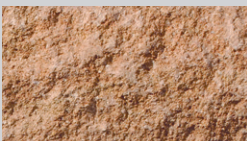
Ironstone



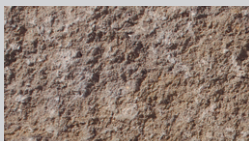
Cotswold Village



Light Ham



Milbourne Olde Heather

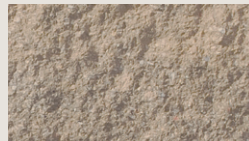


Pentstone



Mid Grey

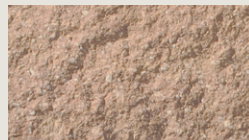
### Anstone®



Black Old Weathered



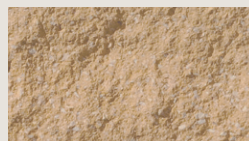
Olde Heather Black



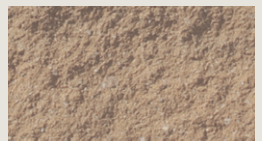
Brown Old Weathered



Olde Steel Grey



Buff



Olde Heather Gold

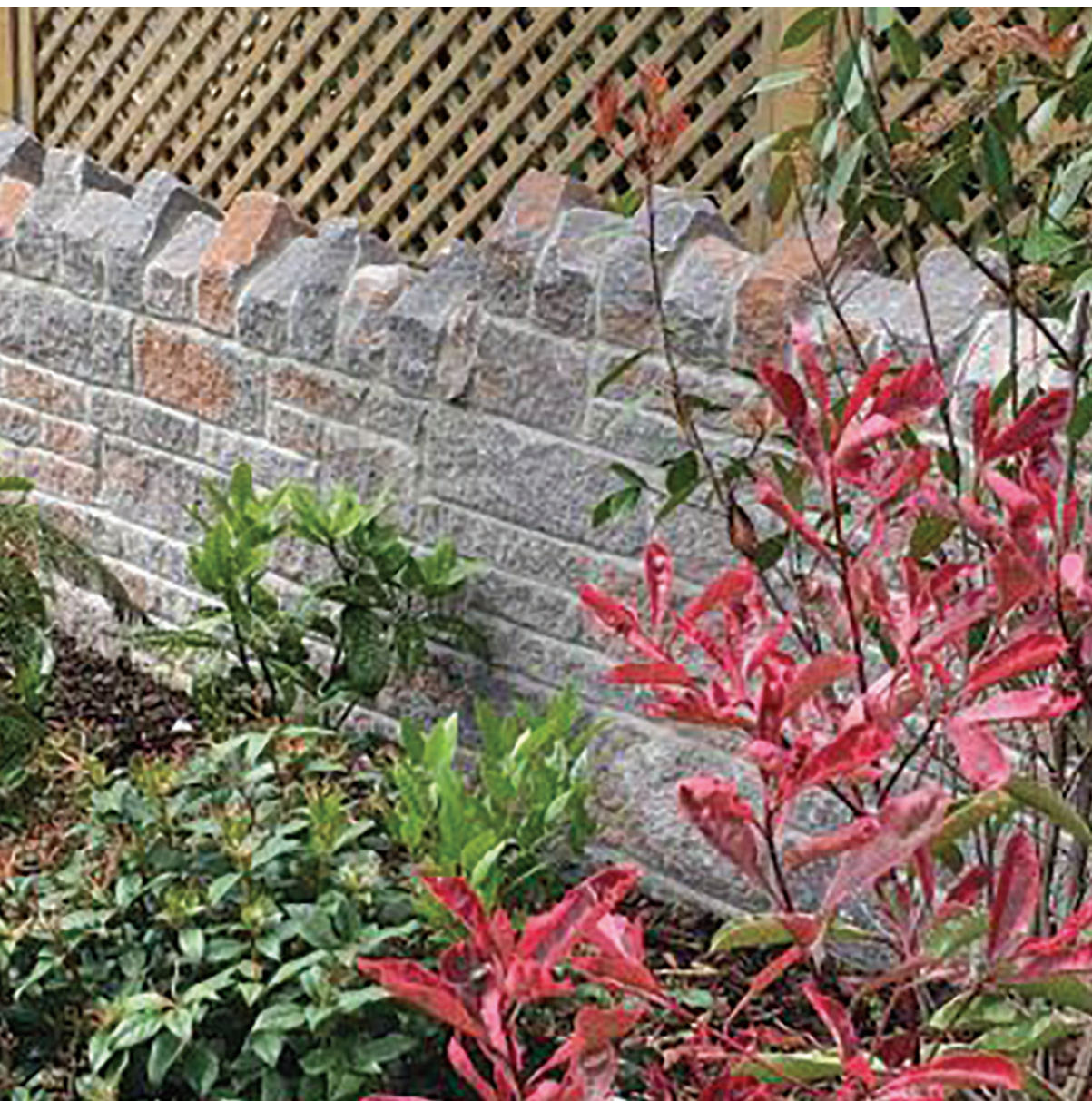


Borders Red



Regency Buff





Cock and Hen cappings are available to complement our splitfaced Anstone and our splitfaced and cottaged Shearstone walling products.

Walling Stone enquiries:

Tel: 01909 775000

Fax: 01909 773549

E-mail: [walling@forticrete.com](mailto:walling@forticrete.com)

[www.forticrete.co.uk](http://www.forticrete.co.uk)

