

# LIGNACITE ECO RANGE

## CONCRETE BLOCKS

Product data updated: 25th Apr 2025

Lignacite ECO concrete blocks are available with either 50% or 70% recycled content. They have been designed to reduce the embodied carbon impact of construction while meeting evolving planning regulations.

Each block is backed by an independently verified Environmental Product Declaration (EPD), providing transparent and reliable environmental performance data to support sustainability goals.

These blocks come in a Paint Grade finish in 100mm and 140mm thicknesses. The 140mm version is specially formulated to optimise block density with a unit weight of less than 20kg. This results in a slight colour difference to the 100mm block.

In addition, we offer delivery using HVO (hydrogenated vegetable oil) fuelled vehicles, reducing the carbon embodiment for delivery by at least 90% compared to diesel.



## Specification & Application

### Standards

Lignacite ECO concrete blocks are BSI Kitemarked and certified to BS EN 771-3. They are also Category 1 masonry units manufactured under a BSI certified Quality Management System, which is BS EN 9001 compliant.

### Appearance

Lignacite ECO concrete blocks are medium grey in colour with a fine textured surface. Blocks are manufactured from natural occurring aggregates, so some colour variation between blocks will be discernible. For Fair Face walls, it is recommended that a sample panel is constructed on site to establish a benchmark for the standard of workmanship and to assess colour variation.

### Application

Recommended for walls that are to be directly decorated. If walls are built unfinished, some colour variation will be evident.

Walls of 210-215mm thickness are recommended to be constructed using two leaves of 100mm Lignacite ECO concrete blocks laid back-to-back and suitably tied. This construction is known as a collar-jointed wall.

Typical locations include:

- The inner leaves of external cavity walls
- Internal walls, including fire break walls
- Separating walls

### Specification

|                                                                     |                                                                                    |
|---------------------------------------------------------------------|------------------------------------------------------------------------------------|
| Face Size                                                           | 440mm x 215mm                                                                      |
| Thickness                                                           | 100mm, 140mm                                                                       |
| Mean Unit Strength                                                  | 3.6/mm <sup>2</sup> , 7.3N/mm <sup>2</sup>                                         |
| Configuration                                                       | Group 1, solid blocks                                                              |
| Dimensional Tolerances                                              | Category D1                                                                        |
| Net Dry Density                                                     | 100mm blocks - 1570 kg/m <sup>3</sup> .<br>140mm blocks - 1450 kg/m <sup>3</sup> . |
| Thermal Conductivity at 3% Moisture Content                         | 100mm blocks - 0.90 W/mK.<br>140mm blocks - 0.79W/mK.                              |
| Airtightness (m <sup>3</sup> /hr/m <sup>2</sup> )<br>No finish      | 100mm solid blocks: 5.5.                                                           |
| Airtightness (m <sup>3</sup> /hr/m <sup>2</sup> )<br>Paint one side | 100mm solid blocks: 0.60 (2 coats of emulsion paint).                              |
| Reaction to Fire                                                    | Class A1                                                                           |
| Moisture Movement                                                   | <0.7mm/m                                                                           |
| Durability Against Freezing/Thawing                                 | Frost resistance in accordance with PD 6697, Table 15.                             |

## Weights & Pack Sizes

All weights are approximate and subject to normal variations in raw materials.

**Table 1 – Concrete Block Weights and Pack Sizes**

| Size mm nominal<br>(mm)<br>(L x W x H) | Unit weight<br>(kg) | Laid weight inc. mortar<br>(kg/m <sup>2</sup> ) | No. of blocks per pack |
|----------------------------------------|---------------------|-------------------------------------------------|------------------------|
| Solid 440 x 100 x 215                  | 14.9                | 159                                             | 72                     |
| Solid 440 x 140 x 215                  | 19.2                | 206                                             | 48                     |

Table 1 Notes:

(1) Weights are based on 3% moisture content by weight.

(2) Pack sizes may vary depending on the plant (Brandon or Nazeing) producing and delivering the blocks. For the most up-to-date information, please contact our Sales Team via [brandonsales@lignacite.co.uk](mailto:brandonsales@lignacite.co.uk) or [nazeingsales@lignacite.co.uk](mailto:nazeingsales@lignacite.co.uk). Alternatively, call our Head Office on 01842 810678.

## Fire Resistance

Lignacite ECO concrete blocks are rated as Class A1 in accordance with BS EN 13501-1:2007+A1:2009. A1 materials are completely non-combustible and make no contribution to fire.

The fire resistance periods of loadbearing and non-loadbearing walls are shown in Table 2, derived from the National Annex to BS EN 1996-1-2. This is applicable to all block strengths.

The fire resistance of loadbearing walls is influenced by the proportion of the load on a wall, which is annotated in the National Annex as a  $\leq 1.0$  or a  $\leq 0.6$ . The fire values presented are based on the worst loading case ( $\leq 1.0$ ) and can therefore be safely used for all loading conditions.

The thicknesses shown are for masonry alone, excluding finishes. For the fire resistance of walls with finishes, refer to the Lignacite Design Guide – Fire Resistance.

**Table 2 – Fire Resistance**

| Block type<br>(No finish) | Non-loadbearing wall<br>(criteria E1) | Loadbearing wall<br>(criteria RE1) |
|---------------------------|---------------------------------------|------------------------------------|
| 100mm solid               | 2 hours                               | 2 hours                            |
| 140mm solid               | 4 hours                               | 3 hours                            |

Table 2 Notes:

(1) Solid blocks are Group 1 units as defined in BS EN 1996-1-1.

## Sound Insulation

Due to its relatively high mass and low porosity, Lignacite ECO concrete blockwork provides excellent levels of sound insulation between buildings and adjoining rooms. The Weighted Sound Reduction Index (R<sub>w</sub>) values of various wall constructions are shown in Table 3.

**Table 3 – Sound Reduction Values**

Weighted Sound Reduction Index: R<sub>w</sub>, (dB):

|                                            | No finish | Paint finish |
|--------------------------------------------|-----------|--------------|
| 100mm solid                                | 44        | 45           |
| 140mm solid                                | 47        | 48           |
| 215mm solid<br>(100mm blocks<br>laid flat) | 53        | 54           |

Table 3 Notes:

- (1) Sound insulation values are based on technical assessments and tests to BS EN ISO 140-3.
- (2) Paint finish is based on emulsion paint and applied to both wall faces.
- (3) 215mm walls built using 100mm blocks laid flat cannot be regarded as a fair face wall. However, the construction will be suitable where the appearance of the wall is not important, or if the wall is to have applied finishes.

## Thermal Properties

The thermal resistance values (m<sup>2</sup> K/W) for Lignacite ECO concrete blocks are shown in Table 5. The values are calculated by dividing the block thickness by its thermal conductivity (W/mK).

**Table 5 – Thermal Resistance Values**

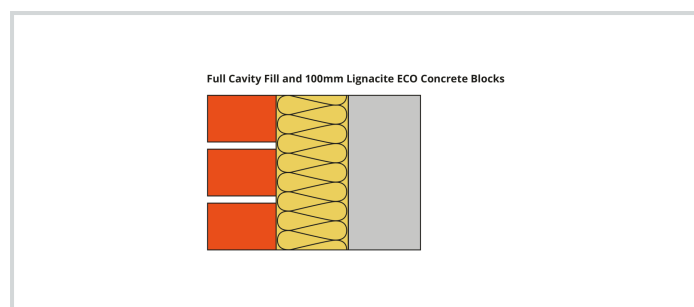
|             | Thermal Resistance<br>(m <sup>2</sup> K/W): 3% m/c |
|-------------|----------------------------------------------------|
| 100mm solid | 0.111                                              |
| 140mm solid | 0.177                                              |

Table 5 Notes:

- (1) 3% moisture content (m/c) should be used for protected locations, such as the inner leaf of external cavity walls.

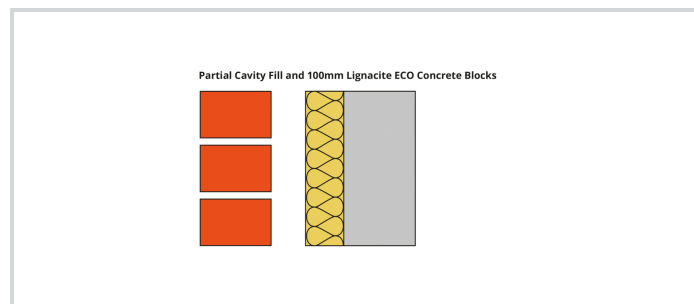
Presented in the tables are the U-values for a range of wall constructions based on 100mm Lignacite ECO concrete blocks with full and partial cavity insulation. The outer leaf is facing brick, but a rendered block outer leaf will usually achieve at least the same U-value. The U-values assume no surface finishes, other than paint.

## Full Cavity Fill and 100mm Lignacite ECO concrete blocks



| Cavity fill type                                   | No Finish<br>U-values (W/m <sup>2</sup> K) |
|----------------------------------------------------|--------------------------------------------|
| 100mm DriTherm Cavity Slab 32 Ultimate             | 0.28                                       |
| 125mm DriTherm Cavity Slab 32 Ultimate             | 0.23                                       |
| 150mm DriTherm Cavity Slab 32 Ultimate             | 0.20                                       |
| 100mm Isover CWS 32                                | 0.28                                       |
| 125mm Isover CWS 32                                | 0.23                                       |
| 150mm Isover CWS 32                                | 0.20                                       |
| 90mm Kingspan Kooltherm K106 (plus a 10mm cavity)  | 0.19                                       |
| 115mm Kingspan Kooltherm K106 (plus a 10mm cavity) | 0.15                                       |
| 140mm Kingspan Kooltherm K106 (plus a 10mm cavity) | 0.13                                       |
| 90mm Eurowall + (plus a 10mm cavity)               | 0.21                                       |
| 115mm Eurowall + (plus a 10mm cavity)              | 0.17                                       |
| 140mm Eurowall + (plus a 10mm cavity)              | 0.14                                       |
| 100mm Xtratherm Cavity Therm                       | 0.20                                       |
| 125mm Xtratherm Cavity Therm                       | 0.16                                       |
| 150mm Xtratherm Cavity Therm                       | 0.14                                       |

## Partial Cavity Fill and 100mm Lignacite ECO concrete blocks



| Cavity fill type              | No Finish<br>U-values (W/m <sup>2</sup> K) |
|-------------------------------|--------------------------------------------|
| 60mm Celotex CW4000           | 0.26                                       |
| 75mm Celotex CW4000           | 0.22                                       |
| 100mm Celotex CW4000          | 0.18                                       |
| 60mm Kingspan Kooltherm K108  | 0.24                                       |
| 75mm Kingspan Kooltherm K108  | 0.20                                       |
| 100mm Kingspan Kooltherm K108 | 0.16                                       |
| 60mm Eurowall Cavity          | 0.26                                       |
| 75mm Eurowall Cavity          | 0.22                                       |
| 100mm Eurowall Cavity         | 0.18                                       |
| 100mm Rockwool Partial Fill   | 0.28                                       |
| 150mm Rockwool Partial Fill   | 0.20                                       |
| 170mm Rockwool Partial Fill   | 0.18                                       |
| 100mm Isover CWS 32           | 0.27                                       |
| 125mm Isover CWS 32           | 0.22                                       |
| 150mm Isover CWS 32           | 0.19                                       |

### Cavity Fill Table's Notes:

- (1) The U-values shown are based on the use of various proprietary insulation products. Alternative products can be used, provided they can achieve an equivalent thermal resistance (m<sup>2</sup> K/W).
- (2) Wall ties are assumed to be stainless steel with a cross-sectional area of no more than 12.5mm<sup>2</sup> for structural cavities up to 125mm wide.
- (3) The suitability of full fill cavity insulation materials will depend on exposure conditions and should be confirmed by the designer. For partial cavity fill, a 50mm residual should be maintained (always check the manufacturer's guidance).

## Sustainability

### ■ Environmental Management and Responsible Sourcing

Our manufacturing plants operate to a BSI-certified Environmental Management System (EMS), which complies with ISO 14001.

Lignacite Ltd also meets the requirements of BES 6001 – Framework Standard for the Responsible Sourcing of Construction Products (Certificate No: BES 580823). This independently awarded Responsible Sourcing Certification confirms that our products have been made with constituent materials that have been responsibly sourced. This extends to organisational governance, supply chain management and environmental and social aspects, all of which must be addressed in order to ensure the responsible sourcing of construction products. Certification to BES 6001 will allow credits to be gained under environment assessment schemes such as BREEAM.

### ■ Energy Management

A BSI-certified energy management system in accordance with ISO 50001 (Certificate No. ENMS 751020) is used to help manage energy use.

Compliance with ISO 50001 is a valuable tool in helping to manage energy use and includes the following outputs.

- A policy for more efficient use of energy
- Fix targets and objectives to meet the policy
- Use data to better understand and make decisions about energy use
- Measure the results
- Review how well the policy works, and
- Continually improve energy management

### ■ Recycled Materials

Lignacite ECO concrete blocks are manufactured with the following minimum recycled content:

- Lignacite ECO 50 (50% recycled material)
- Lignacite ECO 70 (70% recycled material)

### ■ Environmental Performance Declaration (EPD)

Key environmental performance data (in accordance with EN 15804+A2 and ISO 14025/ ISO 1930) can be found in the [EPD for Lignacite ECO blocks](#).

#### Environmental Data Summary

|                                                         |                             |
|---------------------------------------------------------|-----------------------------|
| A1-A3 (Production Stage) - 100mm Lignacite ECO 50       | 6.5 kg CO2e/m <sup>2</sup>  |
| A1-A4 (Production & Transport) - 100mm Lignacite ECO 50 | 6.6 kg CO2e/m <sup>2</sup>  |
| A1-A3 (Production Stage) - 140mm Lignacite ECO 50       | 17.3 kg CO2e/m <sup>2</sup> |
| A1-A4 (Production & Transport) - 140mm Lignacite ECO 50 | 17.3 kg CO2e/m <sup>2</sup> |
| A1-A3 (Production Stage) - 100mm Lignacite ECO 70       | 6.8 kg CO2e/m <sup>2</sup>  |
| A1-A4 (Production & Transport) - 100mm Lignacite ECO 70 | 6.9 kg CO2e/m <sup>2</sup>  |
| A1-A3 (Production Stage) - 140mm Lignacite ECO 70       | 17.3 kg CO2e/m <sup>2</sup> |
| A1-A4 (Production & Transport) - 140mm Lignacite ECO 70 | 17.4 kg CO2e/m <sup>2</sup> |

Source — [Click here for all Lignacite ECO EPDs](#).

The Life Cycle Stage (A1-A3) refers to the extraction, processing, transportation and manufacture of materials and products up to the point where they leave the factory gate to be taken to site.

The notation 'e' is an abbreviation for tonnes of carbon dioxide equivalent.

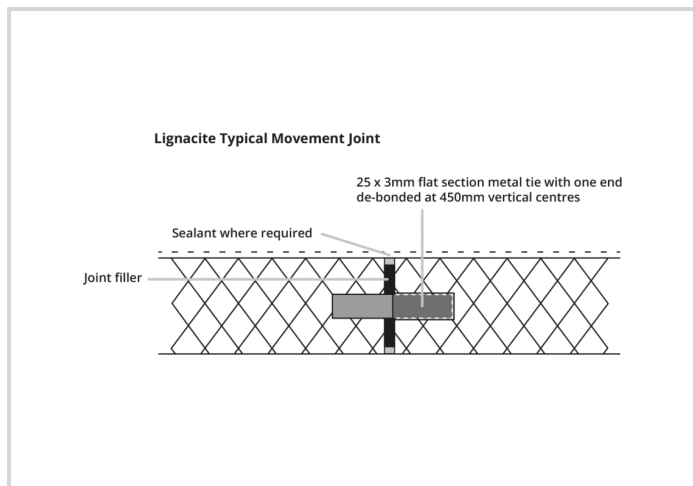
## Design

### ■ Structural Design

The design of walls using Lignacite ECO concrete blocks should be in accordance with relevant design standards, including BS 8103: Part 2, BS EN 1996-1-1 and the requirements of the Building Regulations.

### ■ Movement Control

Vertical movement joints should be considered in accordance with masonry design codes and the recommendations of Published Document PD 6697, at 6.0 – 7.0 metre spacings. In areas of raised stress, such as above and below openings in external walls, the blockwork may need to be reinforced to restrain movement.



### ■ Service Life

When properly constructed, the durability of walls built using Lignacite ECO products will match that of walls of traditional masonry and will fulfil their intended function for the life of the building in which they have been installed (typically 100 years). The concrete blocks themselves will require no maintenance.

Maintenance for walls will normally include the replacement of sealant in movement joints and at junctions / openings. Repointing for walls that are exposed to the elements may be necessary towards the end of their service life.

### ■ Wall Ties

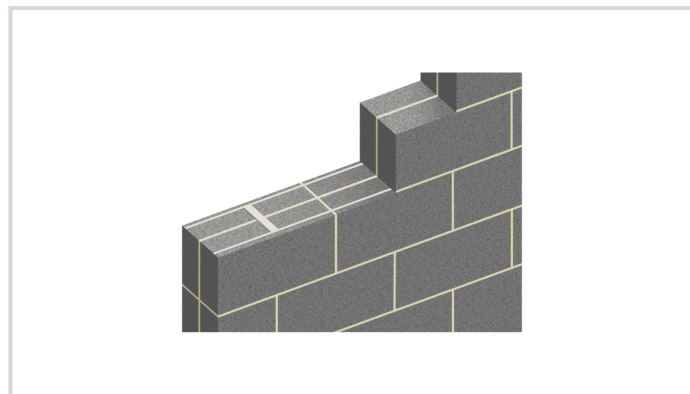
Under normal conditions, wall ties should be embedded 50mm into the mortar on each leaf, staggered in alternate courses and spaced in accordance with the following.

**Table 6 – Wall Tie Spacings**

| Leaf Thickness (mm) | Cavity Width (mm) | Horizontal Spacing (mm) | Vertical Spacing (mm) | Ties per m <sup>2</sup> |
|---------------------|-------------------|-------------------------|-----------------------|-------------------------|
| Less than 90mm      | 50 - 75           | 450                     | 450                   | 4.9                     |
| Over 90mm           | 50 - 150          | 900                     | 450                   | 2.5                     |

### ■ Collar Jointed Walls

When a 200-215mm thick wall is required, it is recommended that a collar-jointed wall is used. This comprises two leaves of 100mm Lignacite ECO blocks laid back-to-back and suitably tied.



Walls can be tied together using metal ties or using masonry reinforcement, e.g., AMR-CJ masonry reinforcement.

Design continued...

## ■ Mortar

Generally, the mortar type for work above ground level should be designation (iii) / Compressive Class M4. Stronger mixes may be required if blocks are used below ground.

**Table 7 – Mortar Mixes**

| Mortar Designation<br>(as per BS 5628-3) | Compressive Strength Class<br>(as per BS EN 1996) | Recommended mix proportions of materials by volume                                                                                                                                                      |
|------------------------------------------|---------------------------------------------------|---------------------------------------------------------------------------------------------------------------------------------------------------------------------------------------------------------|
| (iii)                                    | M4                                                | 1:1:5 to 6 - Cement:Lime:Sand.<br>1:5 to 6 - Cement:Sand with or without air entrainment.<br>1:4 to 5 - Masonry Cement:Sand (with non-lime filler).<br>1:3½:4 - Masonry Cement:Sand (with lime filler). |
| (ii)                                     | M6                                                | 1:½:4-4½ - Cement:Lime: Sand.<br>1:3 to 4 - Cement:Sand with or without air entrainment.<br>1:2½:3½ - Masonry Cement:Sand (with non-lime filler).<br>1:3 - Masonry Cement:Sand (with lime filler).      |

## Site Practice

### ■ Surface Finish Recommendations

#### Direct Painting

A mist coat followed by at least two coats of emulsion will provide a good finish. The actual coverage will depend on the quality of the paint and how it is applied (e.g., brush, roller or by spray). Always ensure that each coat of paint has fully dried before any further layers are added.

### ■ Safe Handling

For detailed advice, refer to Lignacite's [Sitework Guide](#) and the [Material Safety Data sheet](#).

- Concrete block packs may be stacked on firm and level surfaces to a maximum height of 2 packs. Consideration of handling equipment's suitability for site terrain and safety limits should also be given. Hand-operated pallet trucks may not be suitable unless pallets specific for this purpose are used and loads do not exceed the limits of the pallet truck or its operator(s). Care should be taken when opening packs that are wrapped or banded to ensure that items do not fall or otherwise endanger persons handling the blocks or those nearby.
- Handling of concrete blocks should be undertaken in accordance with HSE Construction Sheet No. CIS77 'Preventing injury from handling heavy blocks' (Construction Industry Advisory Committee) and in accordance with the Manual Handling Regulations 1992 (as amended). This concludes that there is a high risk of injury to individuals who repetitively manually handle blocks in excess of 20 kg. Where practical, mechanical handling equipment should be used to transport block packs to the area of work.
- Concrete blocks should not be installed if the temperature is at or below 3°C and falling.
- Concrete blocks should always be laid on a full bed of mortar and vertical joints solidly filled.

