



It's what
striking
architecture
is made of.

PRECAST
BRICK-FACED
SOLUTIONS.



Ibstock
At the heart of building

[CLICK TO FIND OUT MORE](#)





It's what **construction** is made of.

In recent years, the construction industry has witnessed a significant shift towards offsite manufacturing. Exacerbated in part by the sector's widening skills gap, **modern methods of construction enable the creation of genuinely eye-catching builds**, while saving on time and labour costs.

As part of this trend, we have seen real growth in the range of precast systems available – from large precast panels, to smaller scale components. At Ibstock, we have long recognised the potential precast systems represent for architects and specifiers, and have **invested in our range** accordingly. Drawing on our extensive precast experience, we strive to **work closely with our clients to ensure they are specifying the right system for their project**.

FRONT COVER IMAGE: Shelter Hall
Product used: Cheddar Red brick slips on precast arches and lintels

BACKGROUND IMAGE: Blackfriars Circus
Product used: Glazed bricks on precast panels



**CREATION OF GENUINELY
EYE-CATCHING BUILDS**



**INVESTED IN
OUR RANGE**



**WORK CLOSELY
WITH OUR CLIENTS**



IMAGE: Watch Tower, RAF Museum.
Product used: Swanage Imperial Red Stock 68mm on a precast bullseye arch.





It's what the process is made of.

We believe the potential of precast is best unlocked through a robust specification process.

Thanks to our unique position in the market, we are able to bring all elements of our precast offering under one roof – from design and manufacture, right through to quality checks – which, when coupled with our significant investment in our precast capabilities, makes the process easier than ever before for architects and specifiers.

Our process for precast elements is as follows:



STEP ONE

Consultation from our expert specification team, who will seek to understand the unique precast requirements of your project.



STEP TWO

Our specification team will work closely with you to identify the best solutions to meet the exact needs of your project's brief. Once agreed, we will create BIM and CAD drawings and provide samples of your chosen product.



STEP THREE

Designs and order approved by client.



STEP FOUR

The concrete element of your precast order is manufactured by one of Ibstock's Concrete brands (Forticrete, Supreme and Anderton), before being sent to Ibstock Brick or Ibstock Kevington for the brick cladding element.



STEP FIVE

We conduct a final quality check before despatching to your project's location.



STEP SIX

The precast element is installed onto your project.





It's what **design** is made of.

Our precast offering has been developed to provide end-to-end support to architects and specifiers. Thanks to the breadth of our specialisms, **spanning both Clay and Concrete**, we ensure that we can offer a **total package of support**, from initial technical considerations right through to the manufacture of products.

At the outset of any project, **our expert team of design advisors and CAD technicians** create component drawings in partnership with the architect or specifier, granting additional reassurance that the product specified is the right one for their build.



**SPANNING CLAY
AND CONCRETE**



**TOTAL PACKAGE
OF SUPPORT**

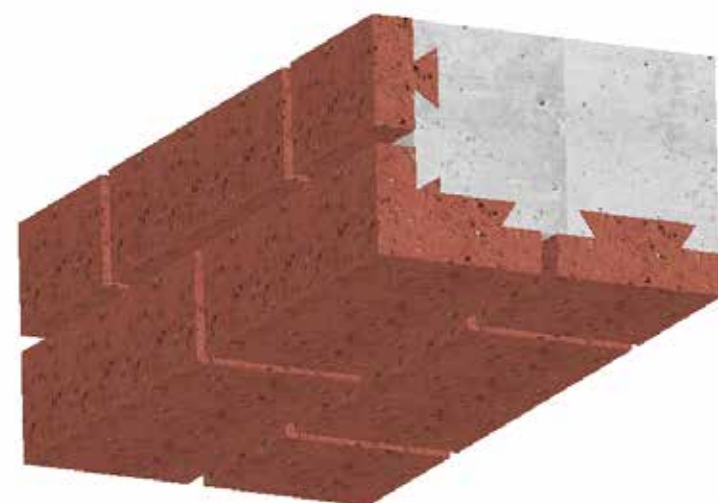


**EXPERT TEAM OF
DESIGN ADVISORS AND
CAD TECHNICIANS**





It's what
design
is made of.



These high quality component parts or facades are manufactured in reinforced concrete – an alternative method of prefabrication which uses a **mechanical key** as opposed to epoxy bonding, ensuring the brick forms an integral part of the precast section. This means that the **product can be delivered to site ready to install**, saving on both time and money while guaranteeing quality.



MECHANICAL KEY



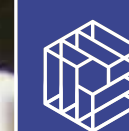
**PRODUCT CAN BE DELIVERED
TO SITE READY TO INSTALL**

THUMBNAIL IMAGES: Renders showing how a mechanical key works in a NEXUS system. The key design can be modified to suit individual client and system requirements.





It's what
choice
is made of.



**Ibstock
Brick**



**Ibstock
Kevington**

We're proud to have a truly industry-leading precast proposition. Our precast components range enables a hybrid approach to construction that blends off-site with more traditional methods. **Fire safety certified to a BBA A1 rating** and easy-to-install, precast components also represent an array of design possibilities for an architect's next project – **from smaller scale domestic renovations, to major commercial developments.**



**FIRE SAFETY CERTIFIED
TO A BBA A1 RATING**



**SMALL SCALE DOMESTIC
RENOVATIONS TO MAJOR
COMMERCIAL DEVELOPMENTS**

Key products in the range include:





It's what
choice
is made of.

 **BACK TO THE RANGE**

SOFFITS AND LINTELS

Manufactured off-site and easy-to-install, precast soffits and lintels represent a flexible, durable means of lending genuine character to a development.

Deep reveals and soffits are an increasingly popular design feature which adds an extra depth and dimension to masonry facades.

The unique expertise found within Ibstock has enabled us to develop effective solutions to realise the popular design feature on site.

For more information, please contact
specification@ibstock.co.uk

 **Ibstock
Brick**

 **Ibstock
Kevington**



IMAGE: Silchester Estate, London
Product used: NEXUS Original Soffit and Lintel systems

BACKGROUND IMAGE: Bow River Village
Product used: Ivanhoe Cream brick slips, NEXUS Original soffits and lintels





It's what
choice
is made of.

 **BACK TO THE RANGE**

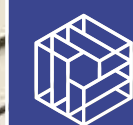
ARCHES

Timesaving prefabricated brick and stone arches, configured to suit most construction methods, which guarantees real kerb appeal – at a fraction of the cost or labour investment.

Available in structural (Structural Concrete Backed and Stainless Steelback) and non-structural (Loose and Hyperlite arches), arches can vary from a simple flat arch detail to something truly decorate and eye-catching.

We can provide a solution that meets the exact needs of your project, including large-scale precast arches.

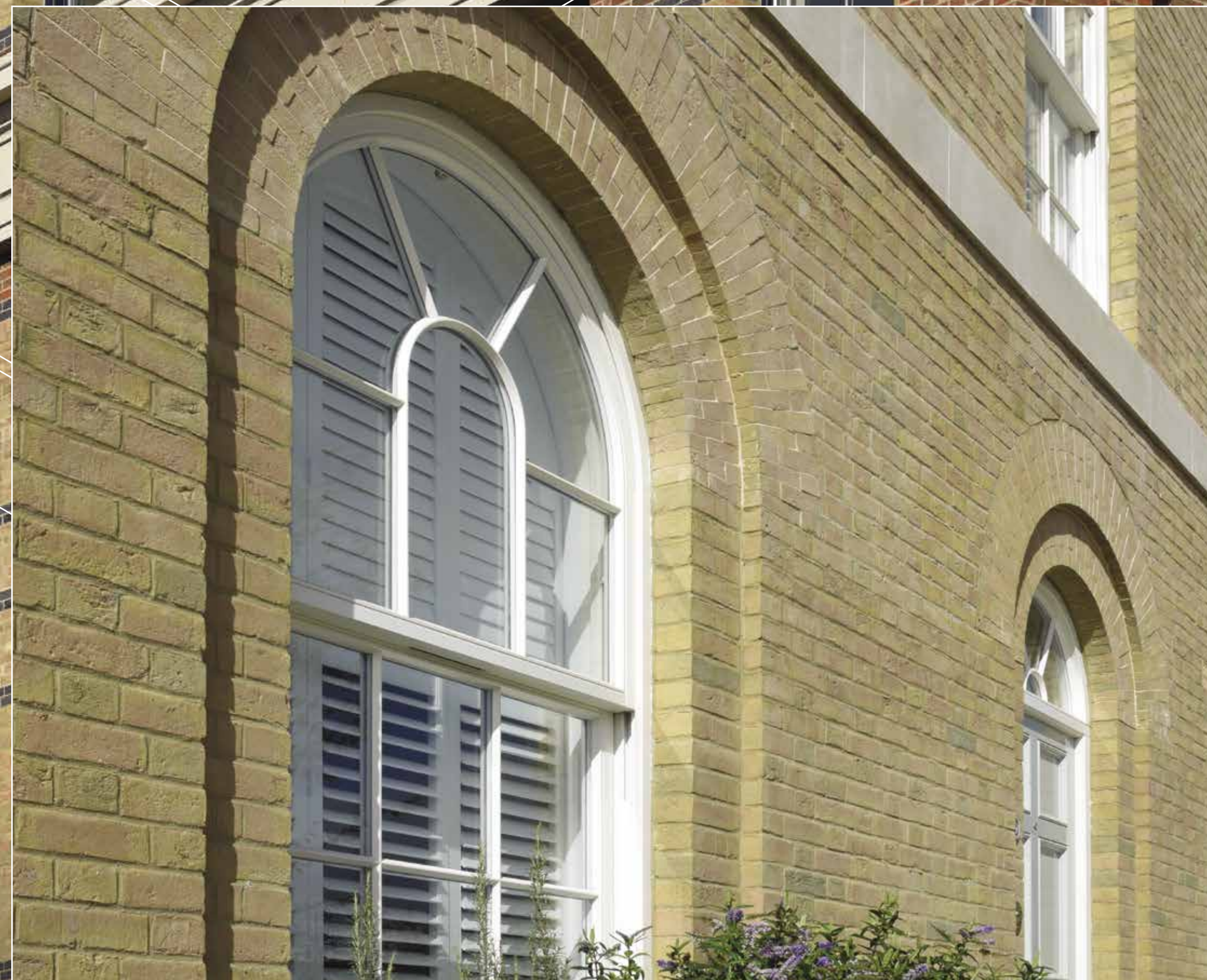
For more information, please contact
specification@ibstock.co.uk



**Ibstock
Brick**



**Ibstock
Kevington**



BOTH IMAGES SHOWN: Poundbury, Dorchester
Product used: Flat gauged, segmental, semi-circular and elliptical brick-faced arches





It's what
choice
is made of.



BACK TO THE RANGE

BRICKWORK COMPONENTS

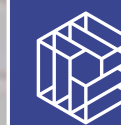
Factory made brickwork details for use alongside conventional masonry, designed to save time and money on site.

All of our brickwork components can be manufactured in any brick or stone, affording unlimited design potential to architects and specifiers and maximising the scope of projects precast components can be used on.

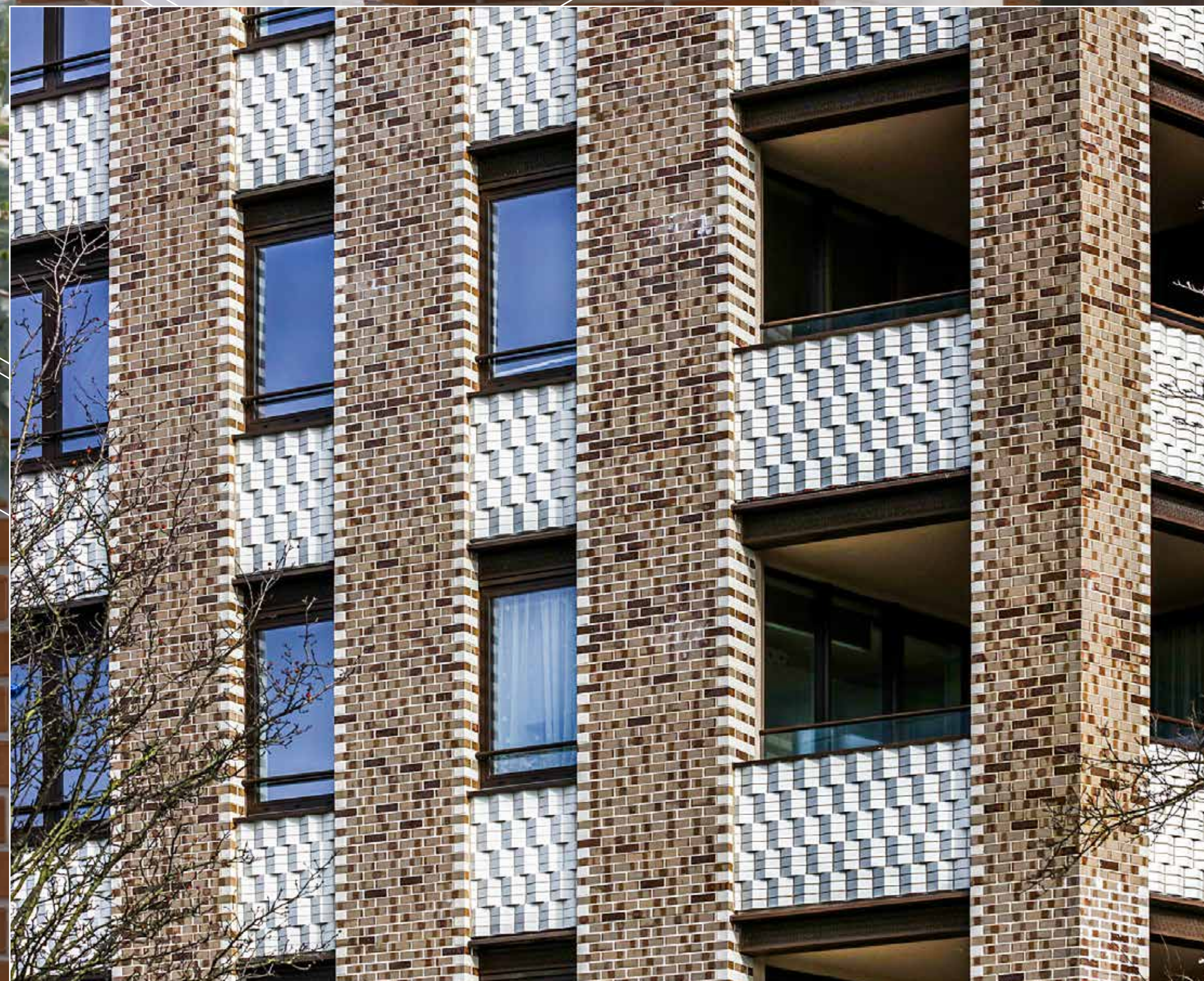
For more information, please contact
specification@ibstock.co.uk



**Ibstock
Brick**



**Ibstock
Kevington**



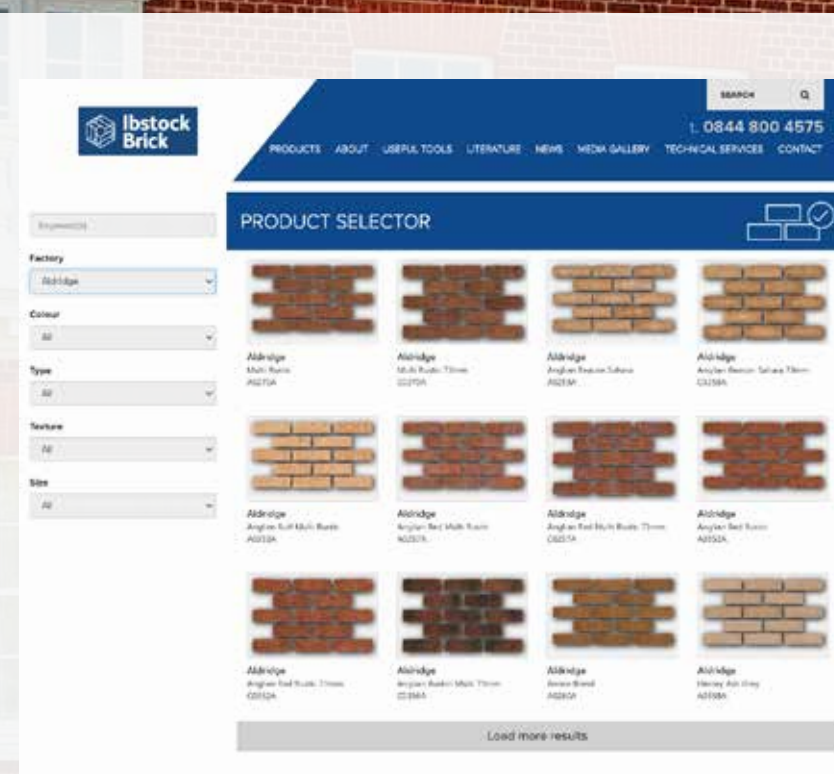
BACKGROUND IMAGE: Blackfriars Circus
Product used: Precast panels and white Glazed brick slips

IMAGE: Chesterfield House
Product used: Sawtooth brickwork on precast panels



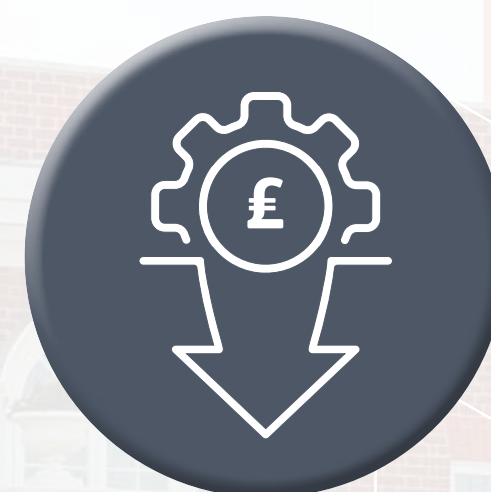


It's what
possibility
is made of.



BACKGROUND IMAGE:
Watch Tower, RAF Museum
Product used: Swanage Imperial Red Stock 68mm on
a precast flat gauge arch

[Click here](#) to access our Online Product Selector and
explore our entire brick range.



**COST-EFFECTIVE,
LOW-MAINTENANCE**



**ANY BRICK MANUFACTURED
AT ANY OF OUR FACILITIES**



**WIDEST DESIGN AND
CREATIVE POSSIBILITIES**

Popular in both domestic and commercial projects, precast panels are a **cost-effective, low-maintenance** façade solution for architects and specifiers. With extensive experience in this field and working with the major suppliers of these systems for a number of years, **we are able to supply any brick manufactured at any of our facilities nationwide for use in precast systems.** Recognising the array of precast systems available on the market, we can provide our bricks with a range of keyed profiles, maximising usability of each product. Ultimately, this presents the **widest possible scope of design and creative possibilities** for architects and specifiers.





From concept to build.

We are proud of the expertise we are able to offer to support our clients with their projects ***from concept to build.***

This capability has enabled us to help with the design and delivery of a wide range of projects over many years.

“We believe the proof of Ibstock’s value throughout the specification process is in the projects we help deliver.”





From **concept** to build. Shelter Hall.

CONCEPT



TO



BUILD



YOUR CONCEPT

Lined with original Victorian buildings, Brighton is home to perhaps the most iconic seafront in the UK.

In recent years, Brighton & Hove City Council has made significant investment into the restoration and regeneration of structures alongside the shoreline, recognising that the area is of outstanding architectural interest and must be preserved for future generations.

The positive impact of this investment is no better evidenced than at Shelter Hall, a flagship restaurant and retail facility which sits on the main public street connecting the seafront and Brighton train station. The new structure has been designed as a larger version of the building which initially occupied the space.





From concept to build. Shelter Hall.

CONCEPT



TO



BUILD



OUR SOLUTIONS

For the architects leading the project, the regeneration work at Shelter Hall presented a series of challenges, both technically (the existing hall was found to have significant structural weaknesses) and from a design perspective. Working to such a complex brief, the architect turned to Ibstock's expert design advisory team for guidance.

Irina Hughes, design technician at Ibstock, explains: "The specification process is a pivotal consideration in any project, but none more so than in a development located in the country's best preserved Victorian seafronts. We understood that the products specified would need to be both durable enough to withstand a changeable coastal climate, but, crucially, be respectful of the area's wider brick vernacular.

"We soon recognised that blending traditional brickwork with modern precast solutions would be the best route to take. This would enable us to combine truly eye-catching brickwork with a lightweight, easy-to-install precast solution – helping the architect make significant time and labour savings on the job.





From concept to **build.** Shelter Hall.

CONCEPT



TO



BUILD



SHELTER HALL, BRIGHTON

“The finished result is truly remarkable. The use of bespoke specials and concrete lintels throughout the façade gives the property a look that is genuinely timeless; eye-catchingly unique but also complementary of the Victorian buildings that surround it.”





It's what
beautiful building
is made of.

CIVIC CENTRE



CIVIC CENTRE, STOKE-ON-TRENT

Home of the recently formed Stoke Central Business District (CBD), the Civic Centre in Stoke-on-Trent is an important administrative hub in one of the Midlands's largest cities.

Comprising two five-storey buildings, the Civic Centre had an ambitious brief which aimed to combine state-of-the-art design while reflecting Stoke-on-Trent's extensive history as a global hub of ceramics production. To ensure this far-reaching brief could be met, the architects sought the advice of Istock's expert design advisory team.

Neil Magner, Sales Manager at Istock, explains: *"The specification process for a development begins the moment that it is conceived, and that's nowhere more true than at Stoke-on-Trent's Civic Centre. Seeking to combine eye-catching modern design with the city's rich legacy, the decision on which products to use in the building's façade was critically important."*

"That blend of old and new is reflected in the finishes used in the brickwork, which blends a variety of Istock glazed and profile bricks to create a striking and unique façade. With both time and budgets limited for this project, we recommended the use of precast brickwork panelling, working in partnership with precast systems specialist Explore Manufacturing."

"The benefits of precast systems to a project like the Civic Centre are multiple. Alongside stringent safety tests and a durability guarantee, precast systems are assembled off-site and delivered to the development ready to install. For a project such as the Civic Centre, where labour costs were a primary factor, the application of an easy-to-install system – which doesn't scrimp on quality or kerb-appeal – is an attractive proposition."





For more information on our Precast range
and to discuss your project requirements,
please call us on **0844 800 4576** or
email specification@ibstock.co.uk