

ENGINEERING
TOMORROW

Danfoss

Hydronic floor heating control

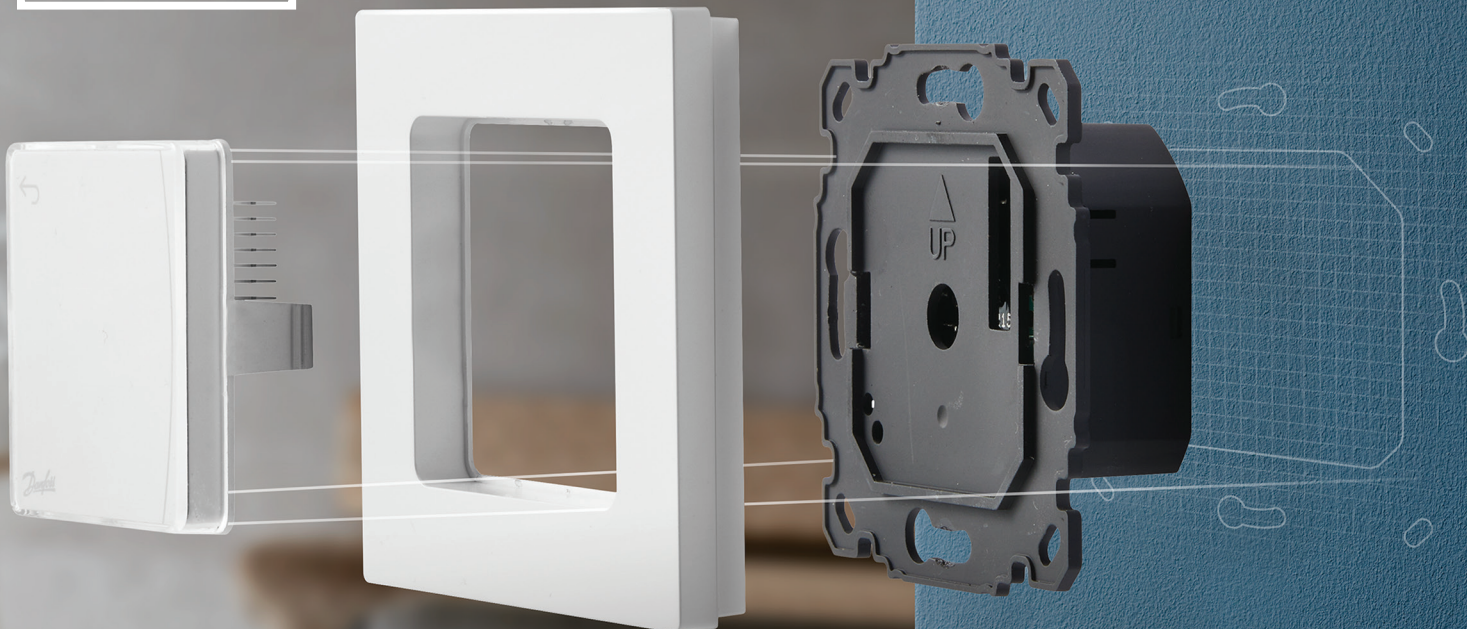
Danfoss *Icon*[™]

A **new generation** of thermostats
for **optimum control** of hydronic
underfloor heating systems

A range of 230 volt room thermostats specially designed for hydronic floor heating
and other applications with actuators.

Seven

pre-defined
schedules can be
selected at the touch
of an icon for ease of
programming.



icon.danfoss.com

Simple or advanced Matches every application

Danfoss *Icon*™ room thermostats are available in dial, display and programmable versions – each with its own individual set of features ranging from standard to advanced functionality.

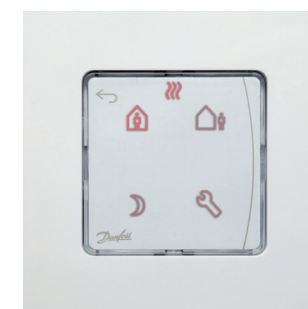
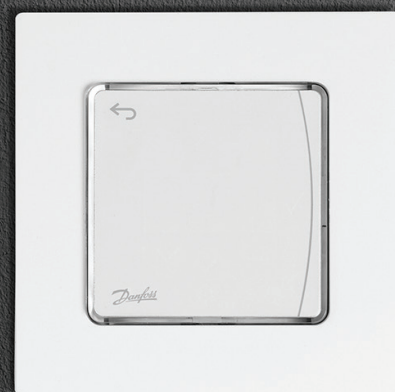
All models can be selected for in-wall or on-wall installation using the Danfoss wall frame - a smart UV-resistant frame that is purpose-designed to match light switches and sockets.

Featuring icon-based navigation and touchscreen control, the Danfoss *Icon*™ has seven pre-defined schedules which can be overridden at any time by simply pressing the *AWAY*, *AT HOME* or *ASLEEP* icons.



This intelligent heating control also includes adaptive learning based on previous data. This energy saving feature will turn the heating on at the precise time to achieve the desired temperature at the scheduled time.

Installation is made easy by simply snapping the front module onto the rear module. If necessary, the angle can be adjusted to compensate for inaccurate junction box installation.

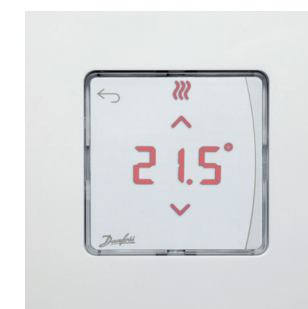


Danfoss *Icon*™ programmable

For those who want to set desired temperature, see current temperature and schedule different temperatures during the course of the day.

Main features

- Touchscreen control
- Icon-based navigation
- Noiseless switching
- Available as in-wall and on-wall
- Can control actuator on radiator
- Valve exercise
- Up to 5x2W NC or NO actuators
- Temperature range limitation
- 230V
- Seven pre-defined schedules
- Adaptive learning
- Input for cooling and 'away' function
- Optional floor sensor



Danfoss *Icon*™ display

For those who want to set the desired temperature and see current temperature.

Main features

- Touchscreen control
- Icon-based navigation
- Noiseless switching
- Available as in-wall and on-wall
- Can control actuator on radiator
- Valve exercise
- Up to 5x2W NC or NO actuators
- Temperature range limitation
- 230V



Danfoss *Icon*™ dial

For those who simply want to set the desired temperature.

Main features

- Available as in-wall and on-wall
- Up to 5x2W NC or NO actuator
- Temperature range limitation
- 230V

230V Danfoss *Icon*[™] room thermostats



Danfoss Icon [™] room thermostats	In-wall	On-wall	Temperature limitation	Noiseless switching	Floor sensor enabled	Pre-defined scheduling	Adaptive learning	Cooling input ¹	'Away' input ¹
230V Dial	088U1000	088U1005	●						
230V Display	088U1010	088U1015	●	●					
230V Programmable	088U1020	088U1025	●	●	●	●	●	●	●

¹ The thermostat can be set to cooling mode or 'away' mode by switching a phase onto the respective input terminal. The switching can be handled automatically by the cooling source (in case of cooling function) or an external timer module (in case of 'away' function). Alternatively they can be handled manually via a simple switch. The functions are active for as long as a phase is present on the input terminal.

Note: The phase used, must be the same phase that supplies the thermostat.

Accessories	Code	Description
230V thermal actuator	088H3112	RA connection, NC (Normally Closed)
230V thermal actuator	088H3113	RA connection, NO (Normally Open)
230V thermal actuator	088H3142	M30 connection, NC (Normally Closed)
230V thermal actuator	088H3143	M30 connection, NO (Normally Open)
230V connection box	088H0016	With pump and boiler relay ¹
Floor sensor	088U1110	Compatible with Danfoss Icon [™] programmable room thermostat

¹ Note: if an NO (Normally Open) actuator is connected, the pump and boiler relays cannot be used as their function cannot be inverted.

FH-WC Wiring Centre

The FH-WC 230 wiring centre is ideal for use in water based floor heating systems. The wiring centre can be connected to 230 volt thermal actuators mounted on the underfloor heating distribution manifold. The centre can control up to eight zones. The unit is directly powered by standard 230 Vac/50 Hz without the need for an external transformer.



Danfoss Limited · Heating Segment · Ampthill Road · Bedford · MK42 9ER · United Kingdom
Tel: +44 1234 364621 · Email: ukheating@danfoss.com · www.heating.danfoss.co.uk

Danfoss can accept no responsibility for possible errors in catalogues, brochures and other printed material. Danfoss reserves the right to alter its products without notice. This also applies to products already on order provided that such alterations can be made without subsequent changes being necessary in specifications already agreed. All trademarks in this material are property of the respective companies. Danfoss and the Danfoss logotype are trademarks of Danfoss A/S. All rights reserved.