



TK50

Automatic entrances
with increased section profile of 50 mm.

FAAC
Simply automatic.

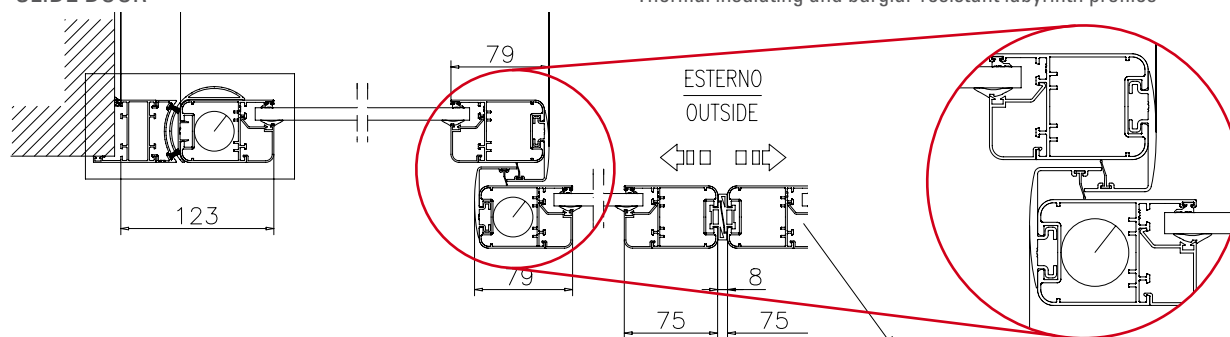
TK50 PROFILES

Automatic entrances with increased section profile of 50 mm.

The sturdiness of these profiles and their innovative design, are the features for those looking for an automatic entrance for installation in places with a high volume of traffic where trolleys and suitcases may be present.

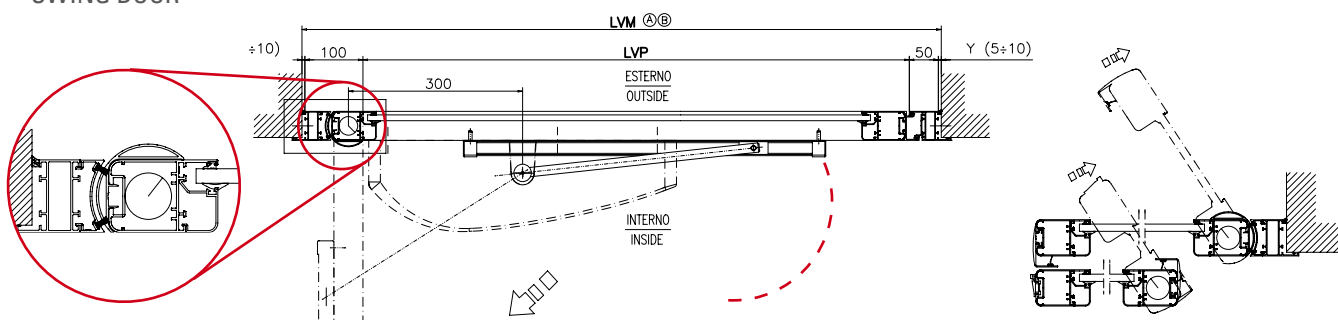
The TK50 profiles are designed to be perfectly integrated with a break-out anti-panic system for applications requiring an emergency exit.

SLIDE DOOR

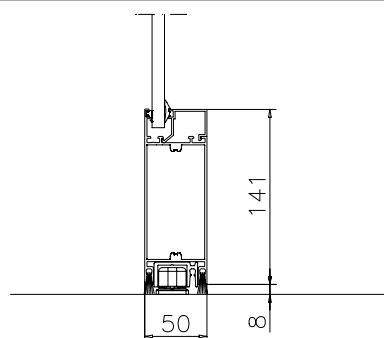


Accident-Prevention Rounded Sliding Profiles Complete With Heat-Resistance Central Striker Seals

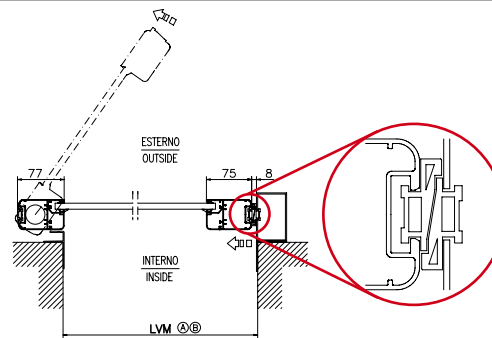
SWING DOOR



Accident-prevention rounded profile for break-out sliding semi-fixed leaves and swing-leaves



Heat-resistance brush between leaf and floor



Striker seal studied to facilitate the break-out ability of the sliding leaf

ITEM OF SPECIFICATIONS TK50

Aluminium alloy profiles, series FAAC TK50, with thickness section of 50 mm., for automatic entrances with sliding and leaf doors.

Complete with glass-retaining profiles and gaskets to house glass panels up to a max thickness of 32 mm.

The base is 141 mm high and an internal seat houses the brushes for the thermal insulation and the sliding rails of the floor sliding block. In the application coupled with the anti-panic break-through system APN, the profiles are coplanar with the structure and without visible hinges. Rubber gaskets for the thermal insulation are fitted in the centre of the sliding leaves.

A "labyrinth" system is used on the sides consisting of two vertical profiles and an end-stroke gasket which intersect when doors are closed. This labyrinth increases the thermal insulation of the entrance and improves the resistance to breaking in the event of entrances coupled with anti-panic break-through system.

Pivoting rotation system of the leaves without cutting and crushing risk (also valid for the semi-fixed leaves of the anti-panic break-through system) in compliance with the Machine Directive.

TABLE OF THE DRAWINGS OF ENTRANCES WITH TK50 PROFILES

Engines	Type		Automated system assembly solution	drawing number
930N SF	1 mov. leaf	without leaves break-out	on wall	1
			on head profile with transom	2
		with leaves break-out	on wall	3
			on head profile with transom	4
	2 mov. leaves	without leaves break-out	on wall	5
			on head profile with transom	6
		with leaves break-out	on wall	7
			on head profile with transom	8
	2 mov. leaves + 2 fixed leaves	without leaves break-out	on head profile	9
			on wall	10
			on head profile with transom	11
			on head profile	12
		with leaves partial break-out	on wall	13
			on head profile with transom	14
		with leaves total break-out	on head profile	15
			on wall	16
	1 mov. leaf + 1 fixed leaf	without leaves break-out	on head profile with transom	17
			on head profile	18
			on wall	19
			on head profile with transom	20
		with leaves total break-out	on head profile	21
			on wall	22
			on head profile with transom	23
			on wall	24
940 SM	1 mov. leaf	without leaves break-out	on head profile with transom	25
			on wall	26
		with leaf break-out	on head profile with transom	27
			on wall	28
	2 mov. leaves	without leaves break-out	on head profile with transom	29
			on wall	30
		with leaves break-out	on head profile with transom	31
			on wall	32
	2 mov. leaves + 2 fixed leaves	without leaves break-out	on head profile	33
			on wall	34
			on head profile with transom	35
			on wall	36
		with leaves partial break-out	on head profile with transom	37
			on head profile	38
		with leaves total break-out	on wall	39
			on head profile with transom	40
	1 mov. leaf + 1 fixed leaf	without leaves break-out	on head profile	41
			on wall	42
			on head profile with transom	43
			on wall	44
		with leaves total break-out	on wall	45
			on head profile with transom	46
			on wall	47
			on head profile with transom	48
940 SMT	2 mov. leaves	telescopic	on head profile	49
	2 mov. leaves + 1 fixed leaf	telescopic	on wall	50
			on head profile with transom	51
	4 mov. leaves	telescopic	on wall	52
			on head profile with transom	53
	4 mov. leaves + 2 fixed leaves	telescopic	on head profile	54
			on wall	55
			on head profile with transom	56
950 N	1 swing leaf	sliding arm	on head profile	80
			on wall	81
			on head profile with transom	82
	1 swing leaf	articulated arm	on head profile	83
			on wall	84
			on head profile with transom	85
	2 swing leaves	sliding arm	on head profile	86
			on wall	87
			on head profile with transom	88
	2 swing leaves	articulated arm	on head profile	89
			on wall	90
			on head profile with transom	91
A100 COMPACT	1 mov. leaf	senza sfondamento ante	su muratura	47
			on head profile with transom	48
		with leaf break-out	on wall	49
			on head profile with transom	50
	2 mov. leaves	without leaves break-out	on wall	51
			on head profile with transom	52
		with leaves break-out	on wall	53
			on head profile with transom	54
	2 mov. leaves + 2 fixed leaves	without leaves break-out	on head profile	55
			on wall	56
			on head profile with transom	57
			on head profile	58
		with leaves partial break-out	on wall	59
			on head profile with transom	60
		with leaves total break-out	on head profile	61
			on wall	62
A140 AIR	1 mov. leaf + 1 fixed leaf	without leaves break-out	on head profile with transom	63
			on head profile	64
			on wall	65
			on head profile with transom	66
		with leaves partial break-out	on head profile	118
			on wall	119
			on head profile with transom	120
			on head profile	67
	1 mov. leaf	with leaves total break-out	on wall	68
			on head profile with transom	69
			on head profile	92
			on wall	93
		with leaf break-out	on head profile with transom	94
			A140 AIR	95
			on head profile with transom	96
			with leaf break-out	97
	2 mov. leaves + 2 fixed leaves	without leaves break-out	on head profile with transom	98
			2 ante mobili	99
			on head profile with transom	100
			with leaves break-out	101
		with leaves partial break-out	on head profile with transom	102
			without leaves break-out	103
			on wall	104
			on head profile with transom	105
	1 mov. leaf + 1 fixed leaf	without leaves break-out	on head profile	106
			on wall	107
			on head profile with transom	108
			on head profile	109
		with leaves partial break-out	on wall	110
			on head profile with transom	111
			on head profile	112
			on wall	113
A140 AIR TELESCOPIC	2 mov. leaves	without leaves break-out	on head profile with transom	114
			on wall	115
		with leaves total break-out	on wall	116
			on head profile with transom	117
	2 mov. leaves + 1 fixed leaf	without leaves break-out	on wall	70
			on head profile with transom	71
		with leaves break-out	on wall	72
			on head profile	73
	4 mov. leaves	without leaves break-out	on head profile with transom	74
			on wall	75
		with leaves break-out	on head profile with transom	76
			on wall	77
	4 mov. leaves + 2 fixed leaves	without leaves break-out	on wall	78
			on head profile	79

HEADQUARTERS

ITALY

FAAC SpA
Via Calari 10 - 40069 Zola Predosa (BO)
Tel. +39 051 61724 - Fax +39 051 758518
it.info@faacgroup.com - www.faacgroup.com

SUBSIDIARIES

AUSTRALIA

FAAC AUSTRALIA PTY LTD
Homebush – Sydney, Australia
tel. +61 2 87565644
fax +61 2 87565677
www.faac.com.au

AUSTRIA

FAAC GMBH
Salzburg, Austria
tel. +43 662 8533950
fax +43 662 85339525
www.faac.at

FAAC TUBULAR MOTORS
tel. +49 30 56796645
fax +49 30 22409006
faactm.info@faacgroup.com
www.faac.at

BENELUX

FAAC BENELUX NV/SA
Brugge, Belgium
tel. +32 50 320202
fax +32 50 320242
www.faacbenelux.com

FAAC TUBULAR MOTORS
Schaapweg 30
NL-6063 BA Vlodrop, Netherlands
tel. +31 475 406014
fax +31 475 406018
faactm.info@faacgroup.com
www.faacbenelux.com

CHINA

FAAC SHANGHAI
Shanghai, China
tel. +86 21 68182970
fax +86 21 68182968
www.faacgroup.cn

FRANCE

FAAC FRANCE
Saint Priest - Lyon, France
tel. +33 4 72218700
fax +33 4 72218701
www.faac.fr

FAAC FRANCE - AGENCE PARIS
Massy - Paris, France
tel. +33 1 69191620
fax +33 1 69191621
www.faac.fr

FAAC FRANCE - DEPARTEMENT VOLETS
Saint Denis de Pile - Bordeaux, France
tel. +33 5 57551890
fax +33 5 57742970
www.faac.fr

GERMANY

FAAC GMBH
Freilassing, Germany
tel. +49 8654 49810
fax +49 8654 498125
www.faac.de

FAAC TUBULAR MOTORS
tel. +49 30 56796645
fax +49 30 22409006
faactm.info@faacgroup.com
www.faac.de

INDIA

FAAC INDIA PVT. LTD
Noida – Delhi, India
tel. +91 120 3934100/4199
fax +91 120 4212132
www.faacindia.com

IRELAND

NATIONAL AUTOMATION LTD
Co. Roscommon, Ireland
tel. +353 71 9663893
fax: +353 71 9663890
www.nal.ie

MIDDLE EAST

FAAC MIDDLE EAST FZE
Dubai Silicon Oasis Operation Center - Dubai, UAE
tel. + 971 4 3724190
fax+ 971 4 3724191
www.faac.ae

NETHERLANDS

KEMKO BV
Doetinchem, Netherlands
tel. +31 314 378777
fax +31 314 362224
www.kemko.nl

NORDIC REGIONS

FAAC NORDIC AB
Perstorp, Sweden
tel. +46 435 779500
fax +46 435 779529
www.faac.se

POLAND

FAAC POLSKA SP.ZO.O
Warszawa, Poland
tel. +48 22 8141422
fax +48 22 8142024
www.faac.pl

RUSSIA

FAAC RUSSIA
Moscow, Russia
tel. +7 (495) 646 24 29
www.faac.ru

SPAIN

CLEM, S.A.U.
San Sebastián de los Reyes - Madrid, Spain
tel. +34 91 3581110
fax +34 91 7293309
www.faac.es

SWITZERLAND

FAAC AG
Altdorf, Switzerland
tel. +41 41 8713440
fax + 41 41 8713484
www.faac.ch

TURKEY

FAAC OTOMATİK GEÇİŞ SİSTEMLERİ
SAN. VE TİC. LTD. SİRTEKİ
İstanbul, Turkey
tel.+90 (0)212 - 3431311
www.faac.com.tr

UNITED KINGDOM

FAAC UK LTD.
Basingstoke Hampshire, UK
tel. +44 1256 318100
fax +44 1256 318101
www.faac.co.uk

U.S.A.

FAAC INTERNATIONAL INC
Fullerton, California - U.S.A.
tel. +1 714 446 9800
fax +1 714 446 9898
www.faacusa.com