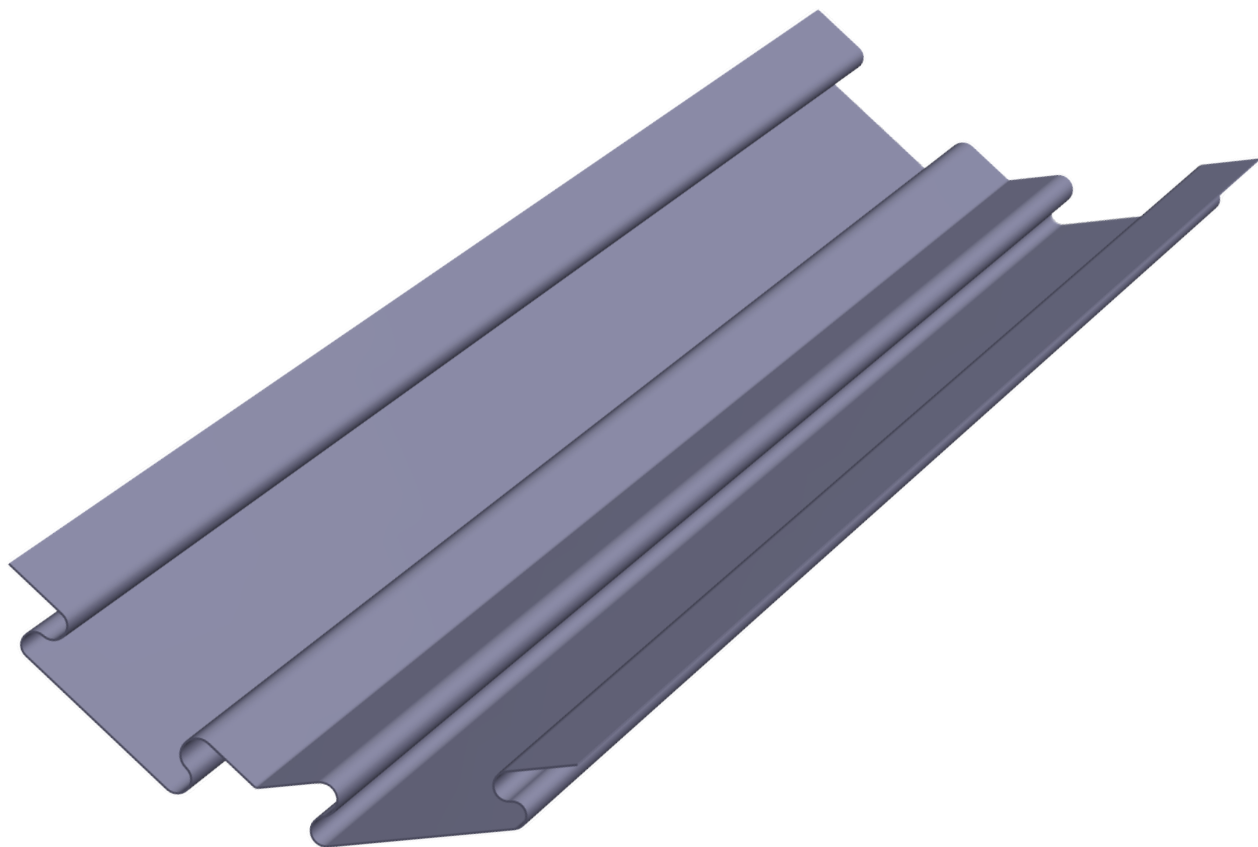


**HERITAGE VALLEY** GRP valley trough

**FILON<sup>®</sup>**



*Patent pending super 'S' design*

# HERITAGE VALLEY GRP valley trough

*The only GRP valley weather resistance tested by the BRE (British Research Establishment)*

Filon has been producing GRP (Glass Reinforced Polyester) products for more than 65 years and produced the first GRP valley gutters by continuous process in the 1980's.

Filon's brand new patent pending Heritage GRP Valley trough provides the classic, heritage aesthetic of a closed/stitched valley for an outstanding appearance. Manufactured from lead grey GRP (Glass Reinforced Polyester), it is suitable for use with any plain tile, slate or flat tile.

## Why choose the Heritage Valley?

### Invisible valley trough with a heritage aesthetic

The Heritage Valley has a traditional stitched valley appearance, but for the price of a normal dry fix valley.

### Cost effective

Saves time and reduces necessary skill level.

No expensive lead soakers required between each slate course saves costs on materials and skilled labour for leadwork.

### No valley roof tile required

A classic heritage appearance without the need for costly valley roof tiles on plain tile roofs.

### Unique 'S' design

Patent pending, innovative, super 'S' design creates a narrow span between tile support ledges ensuring a 43% wider drainage channel.

Maximum strength, maximum support, and maximum style.

### No tile-and-a-half or slate-and-a-half required

Short span between support ledges means there are no unsupported small cut tiles or slates, and no additional tile support pieces are required. Only regular, single width tiles and slates are required providing a huge cost saving.

### No special eaves closures required

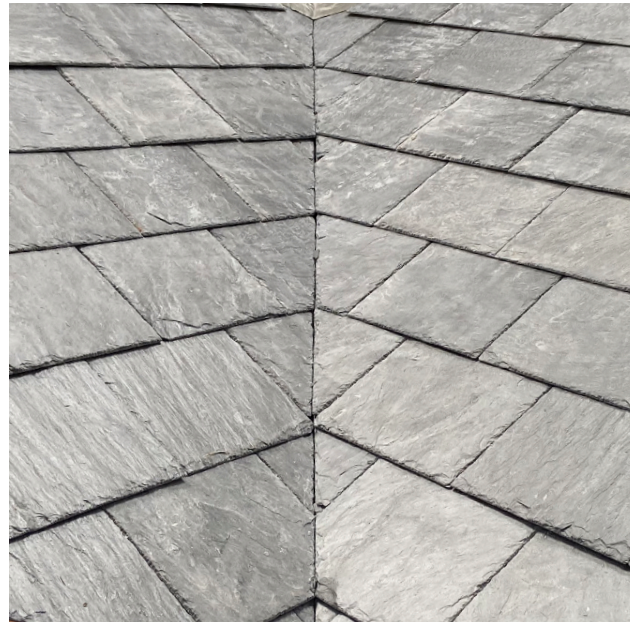
No gaps at the foot of the valley to fill, the fascia board is simply square cut to fit the valley trough profile.

### Dry-Fix

Mortar-free installation, providing a long-term, zero maintenance solution with none of the problems associated with mortar failure.

### Multi-use product

A single valley trough product for use with natural and man-made slates; clay or concrete plain tiles; and flat tiles.





## Quality assured to BS EN ISO 9001

Filon's stringent quality programme applied to the Heritage Valley manufacturing process, ensures a consistent profile and excellent colour matching.

## Excellent long-term durability

UV protected surfaces provide excellent protection against weathering and discolouration, with a life expectancy of over 30 years.

## Easy to handle and install

At a fraction of the weight of lead and supplied in convenient three metre lengths, the Heritage Valley trough is easy to transport and handle on-site. It is easy to cut and sufficiently flexible to allow for a variety of roof pitches.

## Maintenance-free

The UV inhibiting film applied to the external surface of the Heritage Valley trough restricts mould and fungal growth which would impede water flow over time. The deep and wide drainage channel allows debris to be naturally flushed away, and the valley trough will therefore remain clean and unblocked allowing unimpeded, free-flowing rainwater drainage to the eaves guttering.

## Certified fire performance

V-Flow valley troughs are fire rated to:

- BS 476 Part 3 – SAB
- BS 476 Part 7 – Class 3

## Available nationwide

Filon's V-Flow range of valley gutters is available through selected distributors. Please contact the Filon Sales Office for details of stockists and distributors.



# HERITAGE VALLEY GRP valley trough

*The only GRP valley weather resistance tested by the BRE (British Research Establishment)*

Filon undertook the first ever wind driven rain test on a roofing valley at the BRE's testing facility in Watford.

## *How did the tests work?*

The Heritage Valley was tested with slates at 25° and plain tiles at 30° to the highest expected wind speed and rainfall in 50 years, where leakage was measured.

Tests undertaken:

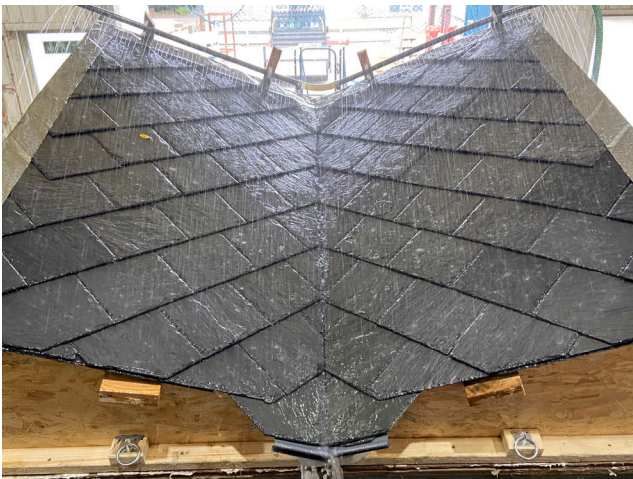
1. High wind speed and High rainfall combination (PD CEN/TR 15601 Test B)

Water is sprayed at a rate equivalent to rainfall of 60mm/hour over the test area plus the run-off bar with a flow equivalent to 60mm/hour over the rest of a typical 7m roof. The wind speed was 13m/s. This represents conditions that on average will only occur once in any 50-year period in Northern Europe.

2. Deluge Test – Maximum rainfall with no wind (PD CEN/TR 15601 Test D)

Water was sprayed onto the specimen with no wind, at a rate equivalent to a rainfall of 225mm/hour over the whole specimen. The run-off spray bar at the top of the test section simulated a rainfall of 225mm/hour over the rest of a typical 7m specimen. The test lasts for two minutes with an observer, beneath the box, checking for leaks. This represents conditions that on average will only occur once in any 50 year period in Northern Europe.

A standard dry fix valley system (GDFVT110) was also tested with both slates and plain tiles and used as a baseline to reference against the performance of the Heritage Valley system.



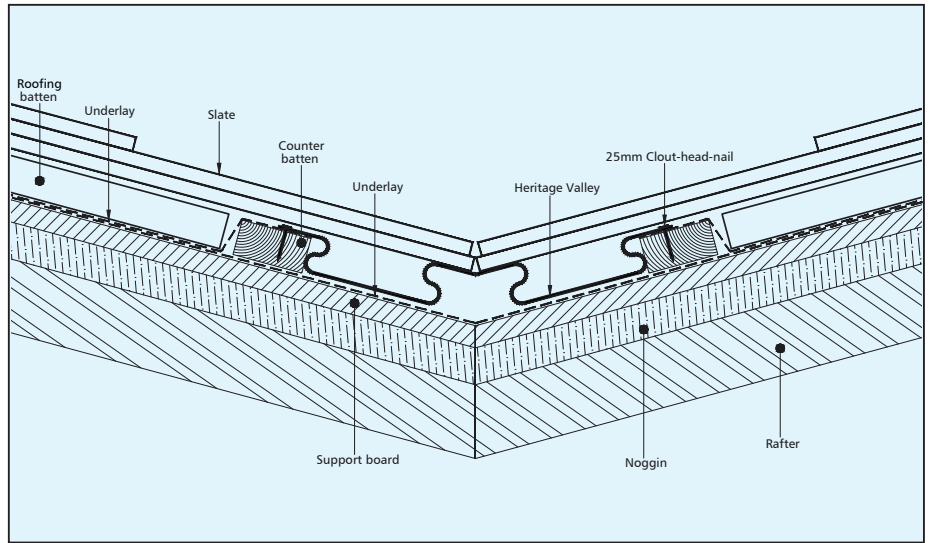
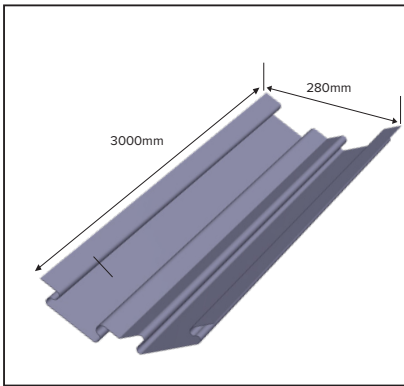
## *Results*

Slates and plain tiles were installed on the valley rig at their minimum recommended pitch, using both the Heritage Valley and standard dry-fix valleys. All four rigs were subject to identical extreme rain and wind conditions and tested until the roof covering leaked. **Both types of valley exceeded performance expectations and at no point gave any indications of leakage or failure.**



## GDFHVT1 Heritage Valley Trough

Slate or shallow tile application





# Filon Products Ltd - the construction innovator

Filon has led the development of GRP profiled sheets since the late 1950s - taking full advantage of the light weight and extreme durability of GRP to make it the obvious material choice of rooflight for many types of new build and refurbishment projects. The Filon range includes:

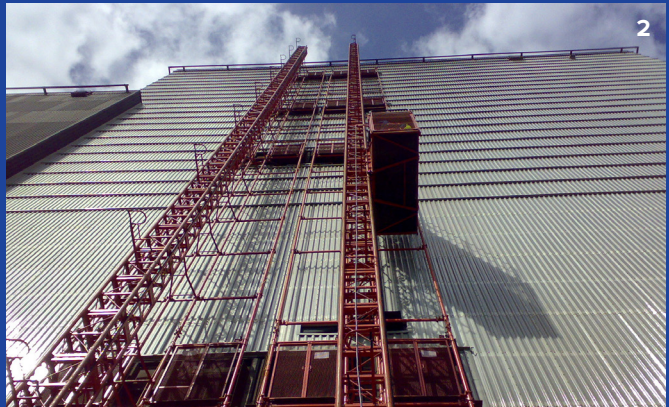
- Standard profiled in-plane GRP rooflights • Enhanced reinforced range: DR24, DR30 and Supasafe • GRP FAIRs (factory assembled insulating rooflights) • Fixsafe safety fixing system for replacing rooflights and roof sheets from inside the building • Filon Citadel opaque and translucent profiled sheets for harsh and corrosive environments • Monarch F GRP barrel vault rooflights • DR Refurb opaque coloured GRP sheets for replacing old asbestos and metal profiled roof and wall sheets
- Filon Over-roofing light weight GRP system for providing a new additional waterproof skin without removing the original asbestos cement roof sheets whilst not increasing the weight of the roof • Bespoke specialist profiled sheet products

## Roofing Products

- V-Flow simulated lead valley gutter system – offers a range of configurations for dry and mortar-fixed applications

## Specialist construction materials

- DSP Diffused Sign Panels for back lit signs • Isofil sheeting for use in water treatment plants for oil / water separation
- Multiclad F hygienic cladding GRP sheets for use as wall and ceiling linings in areas where hygiene is an essential requirement



1. Filon Supasafe reinforced rooflights 2. Filon Citadel profiled sheets for harsh and corrosive environments 3. Filon Fixsafe safety fixing system 4. Filon Over-roofing 5. Filon V-Flow valley troughs 6. Filon Isofil sheets for water treatment plants

# FILON<sup>®</sup>

## Filon Products Limited

Unit 3, Ring Road, Zone 2, Burntwood Business Park  
Burntwood, Staffordshire WS7 3JQ, England

Tel: +44 (0)1543 687300

Email: [sales@filon.co.uk](mailto:sales@filon.co.uk)

[www.filon.co.uk](http://www.filon.co.uk)

M.Heritage.06.24

FILON is a trademark of Filon Products Ltd.

Information and recommendations contained in this publication are given in good faith without warranty or guarantee. We are constantly seeking to improve our products and therefore reserve the right to alter specifications at any time. No liability can be accepted for any claims, losses or demands arising from contents of this publication. This statement does not affect statutory rights which cannot be excluded by agreement.

