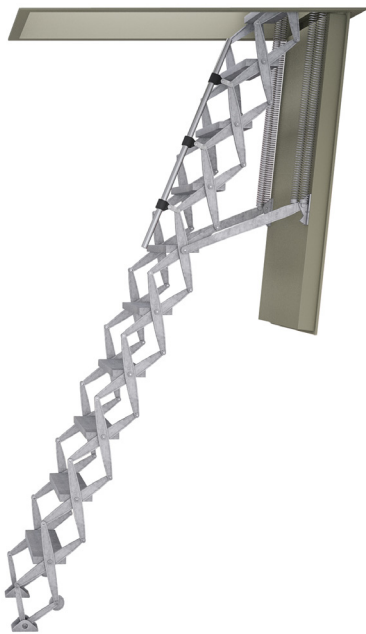


# Supreme F30 Steel

## Overview

The Supreme F30 Steel Hatch box fire resistant loft ladder is tested by IBS Linz for fire resistance of 30 minutes from below (EI<sub>2</sub>30). The heavy-duty aluminium retractable loft ladder is supplied as a ready to fit unit. It is manufactured from high strength die-cast aluminium alloy components contained within a fire-resistant hatch box manufactured from sheet steel.

High Strength | Heavy Duty | Ease of Use | Operating Force of Under 3kg | Space-Saving | Large Steps for Comfort & Safety



## Product Materials & Finish

- Die cast aluminium ladder structure. Natural finish (optional powder coated finish to aluminium components). Steel fixings throughout
- Hatch Box; sheet metal (1.5mm) up to 240mm, ply board upper (18mm)
- Detachable lip; sheet metal (2mm)
- Trapdoor; sheet metal (1mm), mineral fibre board (2x37mm), gypsum board at the end and middle of the trapdoor

## Performance

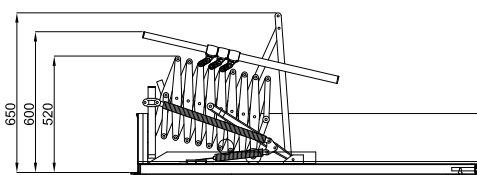
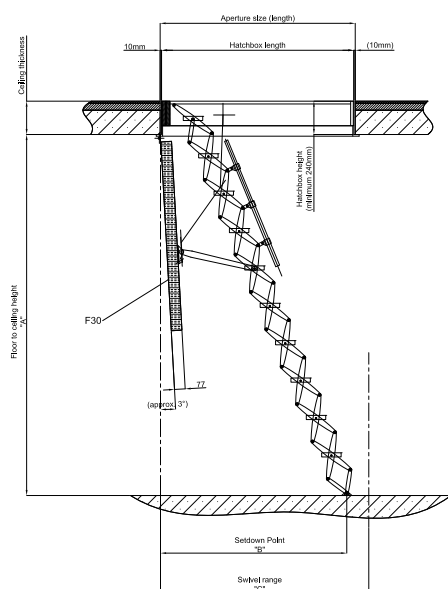
- High energy efficiency (U-value of 0.57 W/m<sup>2</sup>K, calculated by manufacturer according to DIN EN ISO 6946)
- Fire resistant loft ladder and hatch box – tested to 30 minutes (EI<sub>2</sub>30)
- High strength, heavy duty loft ladder, with a load capacity of 200 kg per step

## Quality

- Manufactured and tested to EN 14975 (certified by TÜV SÜD)
- Tested (from below) to EN 1363-1, EN 1634-1 and ÖNORM B 3860 by IBS Linz for fire resistance of 30 minutes (EI<sub>2</sub>30)
- Test method complies to EN 13501-2:2016
- Supplied with a manufacturer's 2-year full warranty and 10-year parts warranty

## Optional Accessories

- Additional telescopic handrail
- Top operation mechanism
- Security lock
- Protective metal railing
- Powder coating



Aperture length depends on the number of treads		Space required in cm		
Treads	Aperture size (length)	Floor to ceiling height "A"	Set down point "B"	Swivel range "C"
9	90 - 160*	220 - 250	130 - 135	138
10	100 - 160**	250 - 279	142 - 147	151
11	110 - 160	279 - 309	154 - 159	163
12	120 - 160	309 - 339	166 - 171	175
13	130 - 160	339 - 369	195 - 199	202
14	140 - 160	369 - 399	208 - 213	215
15	150 - 160	399 - 430	220 - 226	229

Hatchbox external dimensions = aperture size -2cm

\*78 - 160cm for hatchbox height of 24cm only

\*\* 80 - 160cm for hatchbox height of 24cm only

Drawings not to scale. Minimum opening length of 900mm required for telescopic handrail rotation.

## Environment and sustainability

Red listed components - none

Recyclability - Aluminium components can be easily recycled