

Senator® smooth finish profile pantiles



Senator® Red on Arncliffe Homes, Scholes, West Yorkshire.

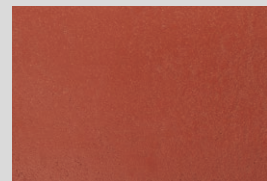
The smooth pantile that carries the BSI kitemark.

- Traditional simple pantile profile
- Hidden fixings including tile clip
- Available in 5 colours
- Full range of dry fix fittings
- Kitemarked to BS EN 490:2011
- 60 year product integrity guarantee

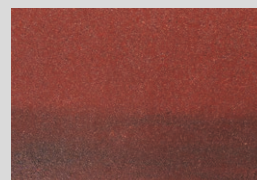


Scan the QR code with your smartphone for instant access to our Senator® products.

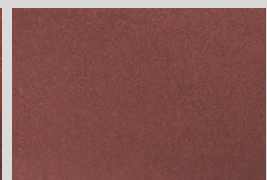
Available in
5 colours



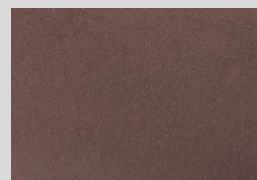
Red



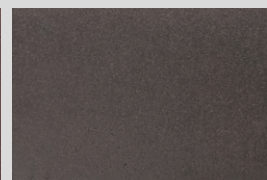
Autumn



Rustic



Brown



Slate Grey

Guarantee

The colour of Senator will change with natural weathering, but the integrity of the tile carries a 60 year product Integrity Guarantee from date of supply, subject to the company's normal terms. Forticrete Roofing Products' policy is one of continuous improvement and the Company reserves the right to change specifications and designs at any time without notice. **Where an exact colour match is critical, you are advised to view actual tile samples which are available on request.**

Senator® tile dimensions and specifications

	Senator® tile	RH verge tile	LH verge tile	Ridge/Hip Dental Slip (for use with mortar bedding)	Bonded double tile	Vent tile (min. pitch 22.5°)
Overall Length:	385mm	385mm	385mm	265mm	385mm	385mm
Hanging Length (L ₁):	368mm	368mm	368mm	-	368mm	368mm
Overall Width (w):	230mm	135mm	185mm	83mm	430mm	230mm
Cover Width (Cw):	200mm	95mm	185mm	-	400mm	200mm
Mass (approx):	2.8kg	1.7kg	2.5kg	0.33kg	5.6kg	4.1kg
Free Vent Area:	-	-	-	-	-	2400mm ²

Note: Bonded double tiles are available on request. These tiles may be required depending on roof pitch when cutting into hips and valleys.

Designation:

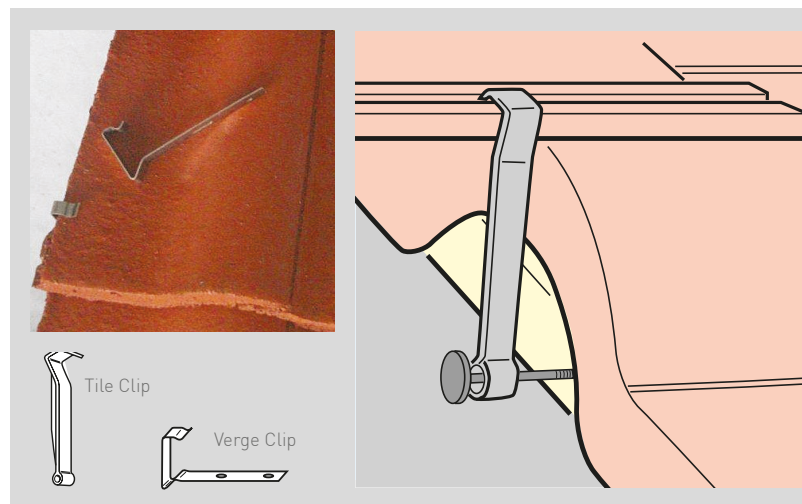
T – EN490 – IL – 40 – RF – 197 – / – / – 368 – 2,9

Senator® standard fixing specification

Aluminium nail 50mm x 3.35mm or purpose made clip. The nail hole diameter is approximately 5mm with the nail hole being positioned approximately 35mm down from the head of the tile and 90mm from the underlock edge of the tile. Where tiles are to be fixed by clipping, fix the tile clip to the lower edge of the tile and nail to the tiling batten supporting the underlying tile using plastic clips with 50 x 3.35mm nails. In more exposed locations it is recommended that all tiles are clipped.

Left and right hand verge tiles are available on request. When mortar bedding verge tiles, a half tile or cut tile should be used so that the verge clip fits over the flat central section of the tile. When mortar bedding the ridge or hip line, dental slips should be used in the pan of the tile to reduce the height and support the mortar bed. Factors governing the mechanical fixing of Forticrete slates and tiles are contained in BS 5534 Slating and Tiling.

Forticrete will be pleased to provide written fixing specifications for specific projects as they cannot be held responsible for fixings on projects where their own guidelines are not followed correctly.



Pitch	Headlap	Batten spacing	Cover width	Batten required	Tiles required	Mass (approx)
22.5° – 70°	75mm	310mm	200mm	3.2 lin m/m ²	16.1/m ²	46kg/m ²

Batten Size: 38mm x 25mm for spans up to 450mm; 50mm x 25mm for spans from 450mm up to 600mm in accordance with BS 5534:2003.

Note: The minimum pitch is based on a maximum rafter length of 10m. For rafter lengths greater than this, please contact the Forticrete Technical Advisory Service.

Working procedures, safety & general precautions

Tiles should be fixed in accordance with BS 5534. Forticrete recommend that fixers of all slates and tiles regard the products as fragile as stated in BS8000:Pt6:1990 Section 5. During installation of the products, the correct setting out and working procedures should be employed to avoid walking directly on to products which have been fixed or are on any completed area of a roof. Should it be necessary to gain access via the roof where battens of adequate strength cannot be used as footholds, this should not be attempted without the use of adequate protection to the tiles or slates including the required number of crawling boards, ladders and cat ladders.

Please note that where there is a change of pitch, packing may be required between crawling boards, cat ladders and the surface of the tiles or slates to avoid damage to the product. Fixers should note that Forticrete do not recommend the practice of cutting tiles or slates in-situ. Other information can be obtained from the Health and Safety in Roof Work publication HSG33 and in the 'Working on Roofs' publication INDG284. Reference should also be made to the Forticrete Technical Literature and Fixing Instructions.

Order your *Senator®* from:

Approved stockist

Senator® Roofing Systems & Technical enquiries:

Forticrete Limited,
Boss Avenue, off Grovebury Road,
Leighton Buzzard,
Beds LU7 4SD

Tel: 01525 244900

Fax: 01525 850432

E-mail: roofing@forticrete.com

All relevant Forticrete roofing products are CE marked. Declarations of Performance are available at www.forticrete-ce.com

Information on the complete range of Forticrete products can be found at www.forticrete.co.uk

Forticrete, Senator, Ecotile and the E device are registered trademarks of Forticrete Ltd.

CRH is a registered trademark of CRH plc.

This document does not form part of any contract and Forticrete cannot accept liability for any errors or omissions.

In order to maintain its position as a market leader, Forticrete operates a policy of continuous product development and therefore reserves the right to alter specifications without notice.

Although the instructions contained in this publication and any other information published by Forticrete are believed to be accurate at the date of publication, they are strictly for guidance only and Forticrete accepts no liability in relation to their use or for any losses, howsoever caused. You are responsible for taking all reasonable steps to ensure your use of the goods/products conforms to all applicable health and safety requirements from time to time. If in doubt, please consult appropriately qualified persons. All products sold by Forticrete are sold subject to Forticrete's Terms and Conditions of Sale, a copy of which is available on request.

© Forticrete Ltd. 2013. All rights reserved.



Scan the QR code with your smartphone for instant access to our website.



EMS 74048

KM 11083

Forticrete® roofing
Redefining traditional products™

