



**What if precision
can be flexible ...**

Fundo Flex®

Slim design, flexible solution



... wedi®




Fundo Flex: precisely flexible

The versatile linear drainage that suits any shower area

The requirements on bathroom construction sites vary; sometimes there is more, sometimes there is less space available. One thing however remains the same: customers would like a long-lasting, aesthetic solution. This is where the Fundo Flex comes into play. If you are looking for a slim, versatile and easy-to-install solution, this channel element with a particularly narrow channel profile is the perfect choice.

With a **width of only 35 mm**, the channel profile fits perfectly into any bathroom design and thanks to its unique **ability to move, rotate and precisely align with the wall, offers maximum installation flexibility**. Trust the proven wedi quality granting you freedom in design and maximum flexibility during the installation - choose the Fundo Flex for your next project.



Close-to-wall installation



Offset installation

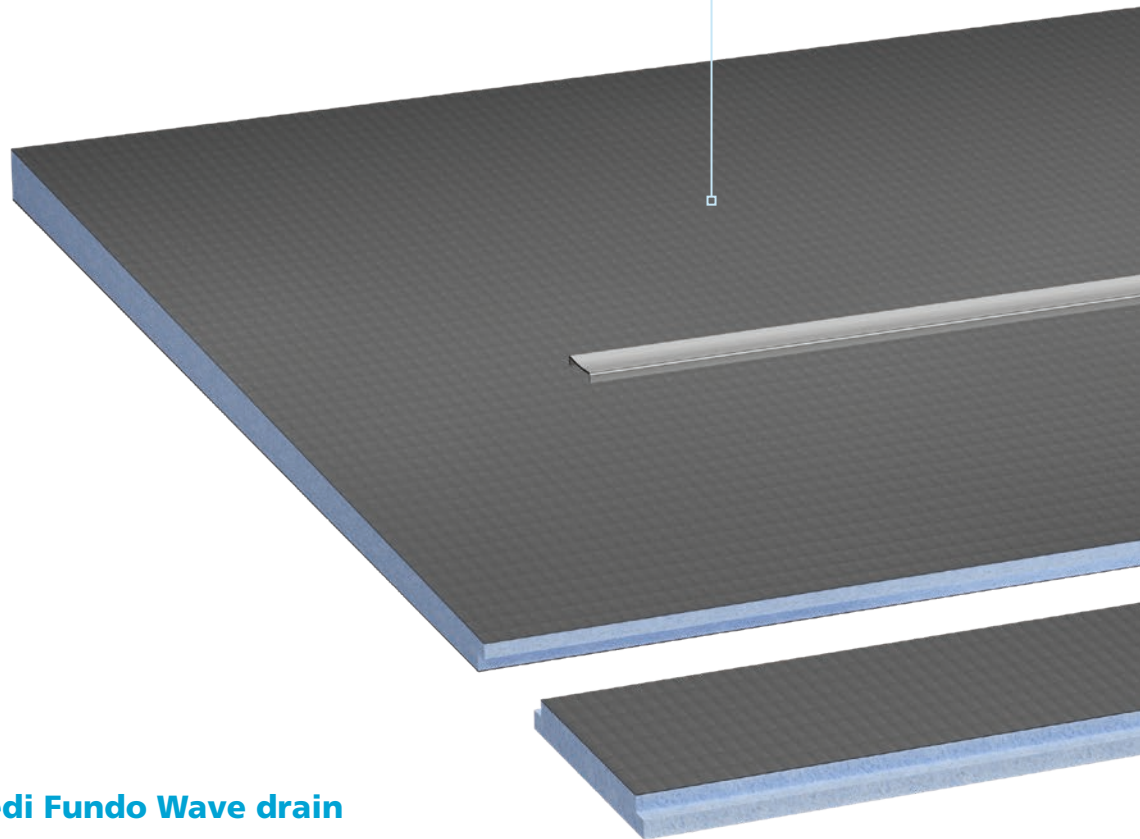


Centred installation

Perfect combination of design and function

wedi Fundo sloping board

Available in various design, with an integrated slope of 1.5%, it enables optimum installation in/on wood or screed.



wedi Fundo Wave drain

Adapter

With a secure bayonet closure for a simple and watertight connection between the channel element and the drain body.

Drain pot

Almost self-cleaning with integrated odour trap, available as DN 40 (60 mm Height) and DN 50 (80 mm height).

wedi Fundo shower channel 1.0

Grid incl. hair catcher

The grid is removable for easy and thorough cleaning.

Channel profile incl. adapter

The channel, which is only 35 mm wide, can be individually shortened and is compatible with tile thicknesses from 6 to 25 mm.

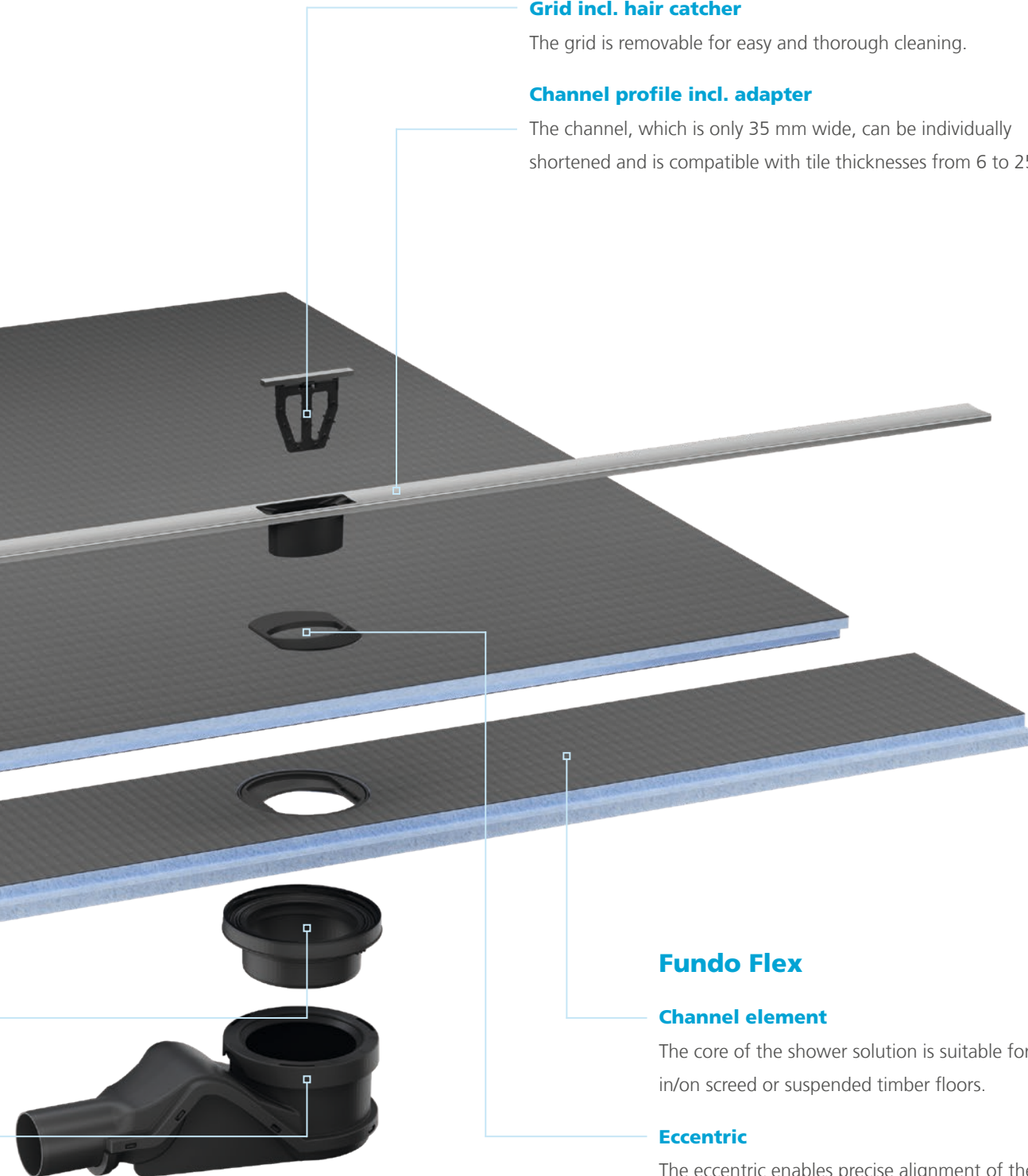
Fundo Flex

Channel element

The core of the shower solution is suitable for installation in/on screed or suspended timber floors.

Eccentric

The eccentric enables precise alignment of the channel with the wall and allows adjustments to its distance from the wall.





Installation instructions &
technical drawings

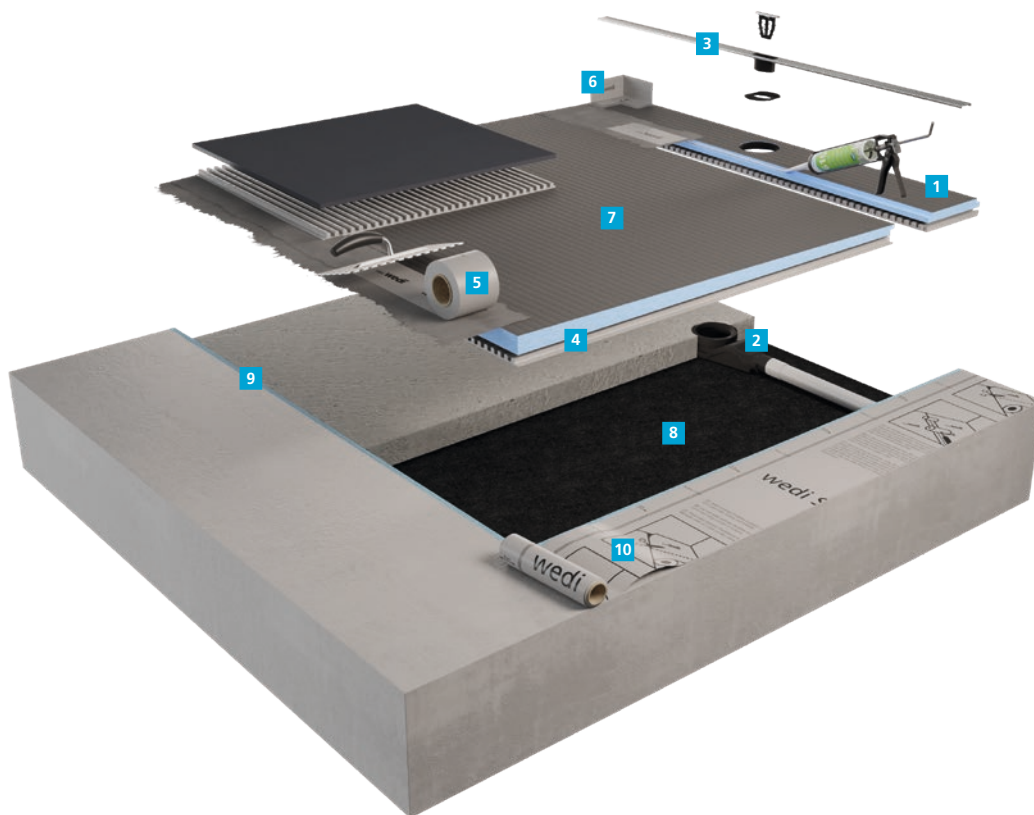
wedi Subliner Dry&F

wedi Subli

System construction in screed

The Fundo Flex is an ideal solution for installation both in and on screed. It allows easy installation, especially in shower cubicles where space is often limited. Matching sloping boards with a factory-integrated 1.5% gradient further simplify the installation.

The special feature of the Fundo Flex is the stepped rebate, which allows a secure connection to the sloping boards on both sides of the channel element. The sloping boards can be individually cut to the required size so that the Fundo Flex channel element can be positioned close-to-wall, centred or anywhere in between. Enjoy maximum flexibility in bathroom design and create your own bespoke Fundo shower solution.



Required system components

- 1 **Fundo Flex channel element** for close-to-wall, offset or centred linear drainage
- 2 **wedi Fundo Wave drain** here with extra flat DN 40 horizontal drain
- 3 **wedi Fundo shower channel 1.0** slim design only 35 mm width, here shown in 1,200 mm length
- 4 **wedi 320** for full-surface bonding of Fundo shower elements to the substrate
- 5 **wedi Fundo sealing set** for sealing of the perimeter of Fundo shower elements when connecting to adjacent surfaces

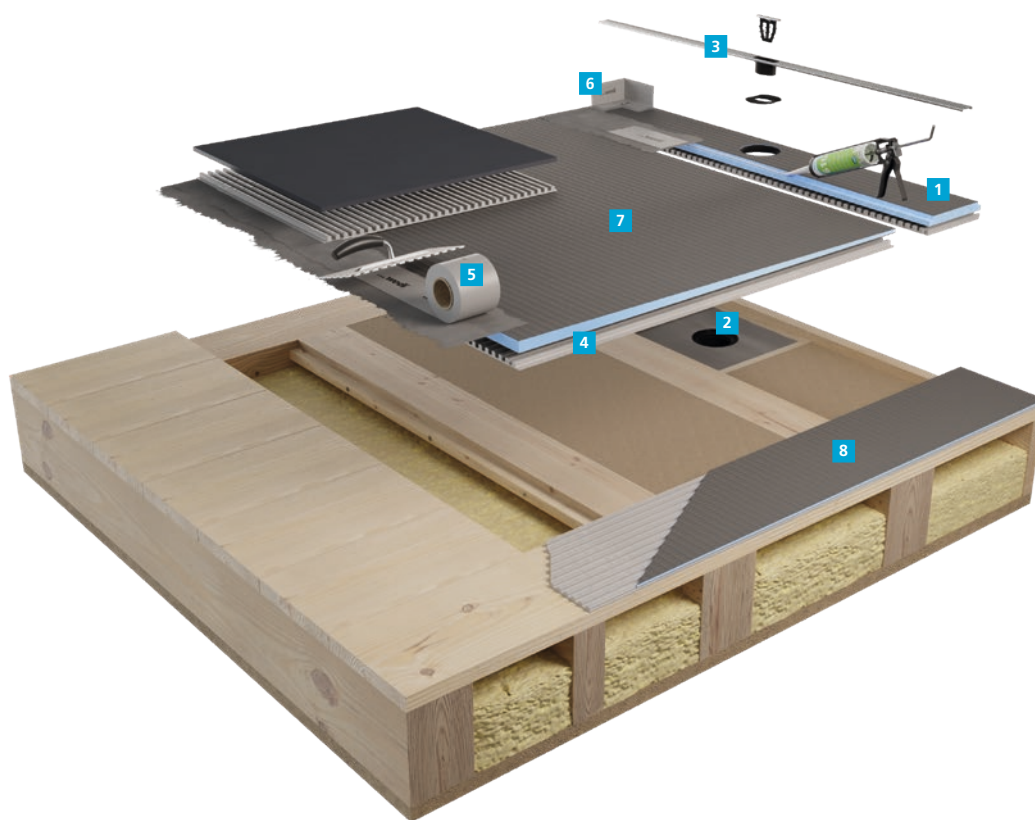
Optional system components

- 6 **wedi Tools sealing corner** for safe sealing of corner joints
- 7 **wedi Fundo sloping board** for extension of the channel element on site - seal and bond the connection in a single step with wedi 610
- 8 **wedi Nonstep ProS** sound insulation mat for water impact and impact sound insulation under wedi Fundo shower elements
- 9 **wedi Tools edge insulation strips** for soundproofing and insulation between the wedi Fundo shower element and the adjacent wall/floor
- 10 **wedi Subliner Dry & Flex** crack-bridging sealing and decoupling membrane

Example system design. Depending on the installation situation and requirements, the system can be combined with different wedi products in a variety of ways.

System construction on suspended timber floors

The Fundo Flex not only offers remarkable versatility when installed in or on suspended timber floors but also opens up creative design possibilities in the bathroom. With a total length of 1200 mm (Fundo Flex and sloping board), the shower system achieves a total installation height of only 101 or 121 mm depending on the drainage, while with the longer sloping board, the total length changes to 1800 mm and the installation height to 110 mm (DN 40) or 130 mm (DN 50) high. This low construction height facilitates integration into various construction site situations. For optimal protection of the wooden structure against moisture, we recommend using our specially developed sloping boards to securely extend the installation into a fully waterproofed shower floor.



Required system components

- 1 **Fundo Flex channel element** for close-to-wall, offset or centred linear drainage
- 2 **wedi Fundo Wave drain** here with DN 50 horizontal drain
- 3 **wedi Fundo shower channel 1.0** slim design only 35 mm width, here shown in 1,200 mm length
- 4 **wedi 320** for full-surface bonding of Fundo shower elements to the substrate
- 5 **wedi Fundo sealing set** for sealing of the perimeter of Fundo shower elements when connecting to adjacent surfaces

Optional system components

- 6 **wedi Tools sealing corner** for safe sealing of corner joints
- 7 **wedi Fundo sloping board** for extension of the channel element on site - seal and bond the connection in a single step with wedi 610
- 8 **wedi building board** for waterproof cladding of adjoining areas

Example system design. Depending on the installation situation and requirements, the system can be combined with different wedi products in a variety of ways.



Installation instructions &
technical drawings

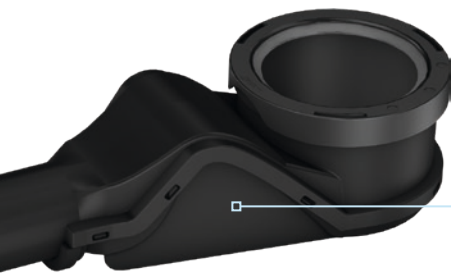
Easy to maintain



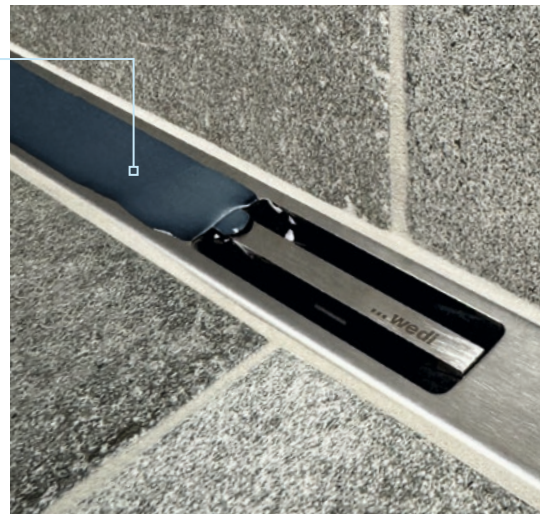
Cleaning instructions



No hidden deposits thanks to the open,
flush water flow



Almost self-cleaning
with integrated odour trap



Easy cleaning thanks to the removable
grid and hair catcher



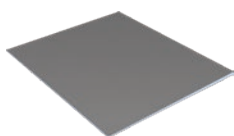
Product overview



Fundo Flex® channel element

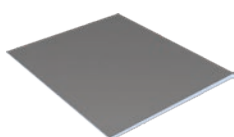
Scope of delivery: Fundo Flex channel element, adapter (pre-assembled), eccentric (pre-assembled), cap tool

Length × width × thickness	Order No.
1.200 × 160 × 22.5 mm	077500017
1.600 × 160 × 22.5 mm	077500018



wedi Fundo® sloping board - rectangular

Length × width × thickness	Order No.
1.200 × 1.040 × 10/26 mm	073737023
1.600 × 1.040 × 10/26 mm	073737033
1.640 × 1.200 × 10/35 mm	073737025



wedi Fundo® sloping board - rectangular, with stepped rebate

Length × width × thickness	Order No.
1.200 × 1.040 × 22.5/38 mm	073737024
1.600 × 1.040 × 22.5/38 mm	073737034
1.640 × 1.200 × 22.5/47 mm	073737026



wedi Fundo® Wave drain - horizontal DN 50

Scope of delivery: drain body, adapter, cap tool, lubricants, DN 56 (GB) adapter

Drain capacity according to DIN EN 1253: 0,50 l/s; 30,0 l/min

Drain height	Order No.
80 mm	077500014



wedi Fundo® Wave drain Mini Max - horizontal DN 40

Scope of delivery: drain body, adapter, cap tool, lubricants

Drain capacity according to DIN EN 1253: 0,50 l/s; 30,0 l/min

Drain height	Order No.
60 mm	077500013



wedi Fundo® shower channel 1.0 - stainless steel V,A brushed

Scope of delivery: channel profile with adapter and drain grid incl. hair catcher, protective film

Length × width × thickness	Order No.
1.200 × 35 × 6 mm	077500015
1.600 × 35 × 6 mm	077500016



Unit 4 Mercury Park, Mercury Way
Trafford Park, M41 7LY
Great Britain

+ 44 161 864 2336

info@wedi.co.uk

www.wedi.net



AZBAX V1
Subject to technical changes. Images similar.

