

EPDM Plumbing Range

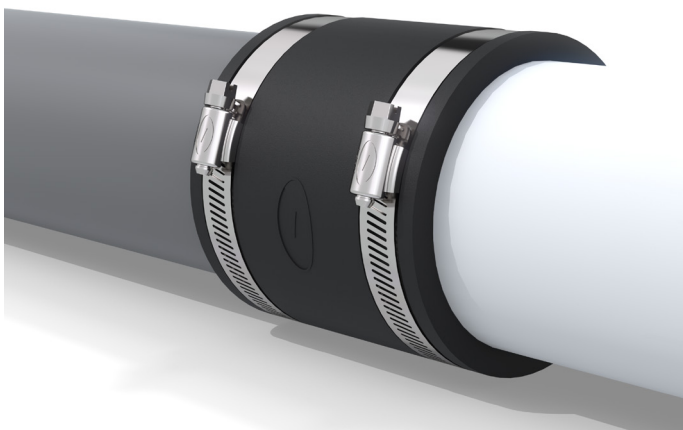
- Quick and easy to install
- Provides a reliable flexible seal, watertight and airtight
- Can be used on any pipe material
- Ideal for connecting incompatible pipe systems
- Temperature range - 50°C to 100°C



The Fernco Plumbing range is designed and manufactured from high performance EPDM rubber, which provides outstanding product quality. End clamps are provided as standard in Grade 1.4301 (304) stainless steel, and Grade 1.4404 (316) stainless steel end clamps are available upon request.

The range is ideal for the connection of pipes with differing outside diameters whether due to different pipe materials or pipe sizes, and also for use on smaller diameter pipes in most low/non pressure plumbing applications.


The range includes Straight Couplings and Adaptor Couplings from 30-100mm. Elbows, Tees and End Caps can be found on the following page.



Product Code	PACXXX, PCXXX, PEXX, PTXX & RECXX
Description	Fernco EPDM Plumbing Range
Size Range	DN25 - DN100
Material	EPDM 1.4301 (304) Stainless Steel
Pressure Rating	0.5bar, 14.5psi
Jetting Resistance	180 bar
Temperature Range	-50°C to 80°C constant, 100°C intermittent
Tightening Torque	6Nm
Standards	BS EN 681-1:1996, BS EN 10088-2:1995

EPDM PLUMBING COUPLINGS


Adaptor Coupling

Common Applications	Product Design	Reference No.	Size Range Large End (mm)	Size Range Small End (mm)
COPPER 35mm POLYPROPYLENE 32mm PAC0301 25mm POLYPROPYLENE		PAC0301	30 - 34	24 - 28
COPPER 35mm POLYPROPYLENE 40mm PAC0431 32mm POLYPROPYLENE		PAC0431	38 - 43	30 - 35
POLYPROPYLENE 40mm ABS 40mm PAC0562 54mm COPPER 50mm ABS 50mm POLYPROPYLENE		PAC0562	48 - 56	38 - 43
POLYPROPYLENE 40mm ABS 40mm PAC0682 50mm CAST IRON BS416/BS437 67mm COPPER 50mm CAST IRON (SMU/ENSIGN/SMU) 50mm ALUMINIUM		PAC0682	60 - 68	38 - 43
COPPER 54mm POLYPROPYLENE 50mm ABS 50mm PAC0923 82mm PVCu 75mm CAST IRON (BS416/BS437) 75mm CAST IRON (SMU/ENSIGN) 75mm STAINLESS STEEL		PAC0923	82 - 92	48 - 56
CAST IRON (BS416/BS437) 50mm CAST IRON (SMU/ENSIGN/SMU) 50mm ALUMINIUM 50mm COPPER 50mm PAC0924 82mm PVCu 75mm CAST IRON (BS416/BS437) 75mm CAST IRON (SMU/ENSIGN) 75mm STAINLESS STEEL		PAC0924	82 - 92	60 - 68


Straight Coupling

Common Applications	Product Design	Reference No.	Size Range Large End (mm)
PC35 35mm COPPER 32mm POLYPROPYLENE		PC35	30 - 35
PC43 42mm COPPER 40mm POLYPROPYLENE		PC43	38 - 43
PC56 50mm POLYPROPYLENE/HDPE 54mm COPPER		PC56	48 - 56
PC68 50mm CAST IRON SMU/ENSIGN/SML 50mm CAST IRON BS416/BS437 67mm COPPER 68mm PLASTIC RAINWATER PIPE		PC68	60 - 68
PC76 75mm PVCu		PC76	67 - 76
PC85 75mm CAST IRON SMU/ENSIGN 76mm COPPER 70mm CAST IRON SML		PC85	76 - 85
PC92 75mm CAST IRON BS416/BS437		PC92	82 - 92
PC100 93mm COPPER		PC100	90 - 100

Plumbing Elbow

Common Applications		Product Design	Reference No.	Size Range (mm)
PE38	<ul style="list-style-type: none">32mm PP35mm COPPER32mm ABS32mm PE		PE38	30 - 38
			PE50	40 - 50
PE50	40mm ABS		PE60	50 - 60
PE60	<ul style="list-style-type: none">54mm (2") COPPER50mm CAST IRON (SMU/ENSIGN/SML)50mm CAST IRON (SOIL)50mm PVCu50mm ABS50mm GALVANISED STEEL63mm ALUMINIUM		PE90	78 - 90
			PE118	106 - 118
PE90	<ul style="list-style-type: none">70mm CAST IRON (ENSIGN/SML)75mm CAST IRON (SOIL)75mm CAST IRON (SMU)82mm PVCu75mm GALVANISED STEEL			
PE118	<ul style="list-style-type: none">100mm CAST IRON (SMU/ENSIGN/SML)100mm CAST IRON (SOIL)110mm PVCu100mm GALVANISED STEEL108mm (4") COPPER100mm POLYETHYLENE			

Plumbing Tee

Common Applications		Product Design	Reference No.	Size Range (mm)
PT38 <ul style="list-style-type: none">32mm PP35mm COPPER32mm ABS32mm PE	PT90 <ul style="list-style-type: none">70mm CAST IRON (ENSIGN/SML)75mm CAST IRON (SOIL)75mm CAST IRON (SMU)82mm PVCu75mm GALVANISED STEEL		PT38	30 - 38
			PT50	40 - 50
PT50	40mm ABS		PT60	50 - 60
PT60 <ul style="list-style-type: none">54mm (2") COPPER50mm CAST IRON (SMU/ENSIGN/SML)50mm CAST IRON (SOIL)50mm PVCu50mm ABS50mm GALVANISED STEEL63mm ALUMINIUM	PT118 <ul style="list-style-type: none">100mm CAST IRON (SMU/ENSIGN/SML)100mm CAST IRON (SOIL)110mm PVCu100mm GALVANISED STEEL108mm (4") COPPER100mm POLYETHYLENE		PT90	78 - 90
			PT118	106 - 118

End Cap

Product Design		Reference No.	Size Range (mm)	Ref No with Test Nipple
		REC36	28 - 36	REC36T
		REC45	37 - 45	REC45T
WITHOUT TEST NIPPLE	WITH TEST NIPPLE	REC56	48 - 56	REC56T
		REC68	60 - 68	REC68T
		REC76	67 - 76	REC76T
		REC85	76 - 85	REC85T
		REC92	82 - 92	REC92T

General Information

Quality, Standards and Approvals

Fernco has been certified by the British Standards Institution (BSI) as a company of assessed capability, with a quality management system which meets the requirements of BS EN ISO 9001:2015

Fernco, part of the Fernco Group, are the leaders in wastewater connection innovation; utilising the most advanced methods and techniques for precision-manufactured products, all of which comply with or exceed relevant British and European standards to ensure reliability and sustainability.

Environment

Fernco operate Environmental Management Systems which are certified to ISO 14001: 2015.

Supply

Fernco are proud members of the Builders Merchants Federation (BMF). All Fernco products are supplied through a national and global network of distribution and merchant partners. For stockist details, contact Fernco.

Technical Support

Fernco have a team of product experts on hand to support all customers with technical support and advise.

Contact Fernco Technical Department:

Tel: +44 (0) 1226 344100

Email: technical@fernco.co.uk

Enquiries

UK Sales:

Tel: +44 (0) 1226 340 888

Email: sales@fernco.co.uk

International Sales:

Tel: +44 (0) 1226 344 105

Email: export.dept@fernco.co.uk

