

# Chemical Couplings

- Meet specific site and contractor requirements
- Watertight connection on chemical drainage systems
- High chemical resistance
- Suitable for above ground and underground drainage applications



Fernco Chemical Couplings provide a flexible and watertight connection on underground drainage systems that require a high chemical resistance to a wide range of chemicals.

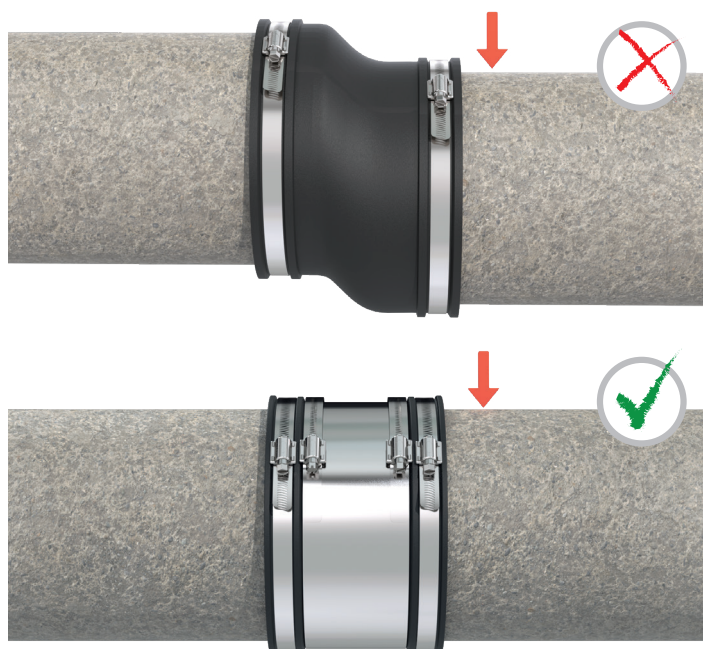
Manufactured to meet specific site requirements, Fernco Chemical Couplings are able to withstand the widest possible range of chemicals, due to the shear band and clamping bands encasing a high-performance elastomeric sleeve with a chemically resistant one-piece Fluoropolymer (FEP) liner and expanded PTFE seals.

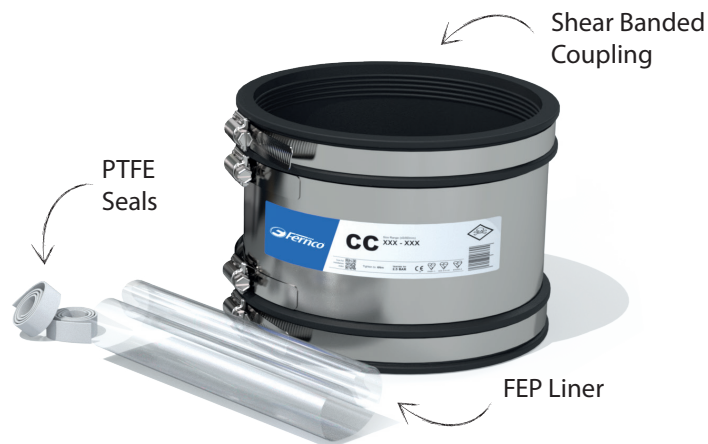
Fernco Chemical Couplings are available with either Grade 1.4301 (304) or Grade 1.4401 (316L) stainless steel clamp and shear bands.

## Applications

- Used on chemically resistant drainage systems
- Petrol stations
- Hospitals
- Processing plants
- CIP systems
- Energy recovery facilities (ERFs)
- Suitable for above ground and underground drainage applications

Strong stainless steel shear band helps protect pipe against displacement under heavy shear loads.





Product Code	CCXXX
Description	Fernco Chemical Coupling
Size Range	50 - 620mm
Material	EPDM 1.4301 (304) Stainless Steel FEP Liner PTFE Seals <i>Couplings with a different material makeup are available on request.</i>
Pressure Rating	2.5bar, 36.25psi
Temperature Range	-50°C to 80°C constant, 100°C intermittent
Standards	BS EN 681-1:1996

Fernco Chemical Couplings provide resistance to the broadest range of chemicals possible.

The FEP liner and PTFE seals are chemically inert and solvent resistant to most chemicals with the exception of molten alkali metals, fluorine at elevated temperatures and other complex halogenated compounds, for example, chlorine trifluoride, at elevated temperatures and pressures.

In situations of extreme temperatures, 80% sodium hydroxide, metal hydrides, aluminium chloride, ammonia and certain amines (R-NH<sub>2</sub>) may attack the film in a manner similar to molten alkali metals.

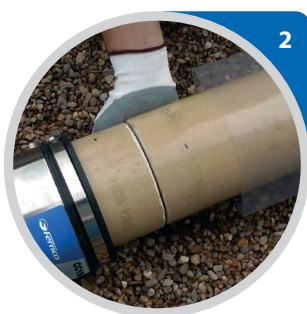
Although special testing may be required when such extreme reducing or oxidizing conditions are evident, the FEP liner and PTFE seals exhibit a very broad range of chemical and thermal serviceability. Final selection should be based on functional evaluations or experience under actual end use conditions.

Product Code	Size Range (mm)	Mix/Max Pipe OD's (mm)	Torque	Maximum difference between pipes OD's (mm)
CC65	50 - 65	50 - 60	6Nm	6
CC75	60 - 75	60 - 70	6Nm	6
CC85	70 - 85	70 - 80	6Nm	6
CC95	80 - 95	80 - 90	6Nm	6
CC115	100 - 115	100 - 110	6Nm	6
CC125	110 - 125	110 - 115	6Nm	6
CC137	122 - 137	122 - 132	6Nm	6
CC150	125 - 150	125 - 145	6Nm	6
CC165	140 - 165	140 - 160	6Nm	6
CC185	160 - 185	160 - 180	6Nm	6
CC200	175 - 200	175 - 195	6Nm	6
CC225	200 - 225	200 - 220	13Nm	6
CC250	225 - 250	225 - 245	13Nm	6
CC265	240 - 265	240 - 260	13Nm	6
CC290	265 - 290	265 - 285	13Nm	6
CC310	285 - 310	285 - 305	13Nm	8
CC335	310 - 335	310 - 330	13Nm	8
CC360	335 - 360	335 - 355	13Nm	8
CC370	345 - 370	345 - 365	13Nm	8
CC385	360 - 385	360 - 380	13Nm	8
CC410	385 - 410	385 - 405	13Nm	8
CC425	400 - 425	400 - 420	13Nm	8
CC445	420 - 445	420 - 440	13Nm	10
CC465	440 - 465	440 - 460	13Nm	10
CC490	465 - 490	465 - 485	13Nm	10
CC510	485 - 510	485 - 505	13Nm	10
CC525	500 - 525	500 - 520	13Nm	10
CC540	515 - 540	515 - 535	13Nm	10
CC560	535 - 560	535 - 555	13Nm	10
CC580	555 - 580	555 - 575	13Nm	10
CC600	575 - 600	575 - 595	13Nm	10
CC620	595 - 620	595 - 615	13Nm	10

*Bushes can be used to accommodate differences between pipe OD's which fall outside the limitations of the coupling.*

Note: The Min/Max pipe OD range is slightly smaller than the couplings size range to accommodate FEP liner and PTFE seals, which is supplied with the coupling.

# Installation



## 6 easy steps

1. Ensure the pipe ends are free from debris and chamfered to a minimum of 3mm x 45°
2. Slide the sleeve and coupling onto the pipes and butt the pipes together
3. Mark off the positions for the PTFE seals symmetrically, to ensure they are directly underneath the clamp bands
4. Fit the self adhesive seals onto the pipes, overlapping the tape ends
5. Slide the FEP liner over the seals and apply hot air evenly to shrink it onto the pipe
6. Position the coupling centrally over the liner and tighten to the recommended torque



# General Information

## Quality, Standards and Approvals

Fernco has been certified by the British Standards Institution (BSI) as a company of assessed capability, with a quality management system which meets the requirements of BS EN ISO 9001:2015

Fernco UK, part of a global group of companies, are the leaders in wastewater connection innovation; utilising the most advanced methods and techniques for precision-manufactured products, all of which comply with or exceed relevant British and European standards to ensure reliability and sustainability.

## Environment

Fernco operate Environmental Management Systems which are certified to ISO 14001: 2015.

## Supply

Fernco are proud members of the Builders Merchants Federation (BMF). All Fernco products are supplied through a national and global network of distribution and merchant partners. For stockist details, contact Fernco.

## Technical Support

Fernco have a team of product experts on hand to support all customers with technical support and advice.

Contact Fernco Technical Department:

Tel: +44 (0) 1226 344100

Email: [technical@fernco.co.uk](mailto:technical@fernco.co.uk)

## Enquiries

UK Sales:

Tel: +44 (0) 1226 340 888

Email: [sales@fernco.co.uk](mailto:sales@fernco.co.uk)

International Sales:

Tel: +44 (0) 1226 344 105

Email: [export.dept@fernco.co.uk](mailto:export.dept@fernco.co.uk)