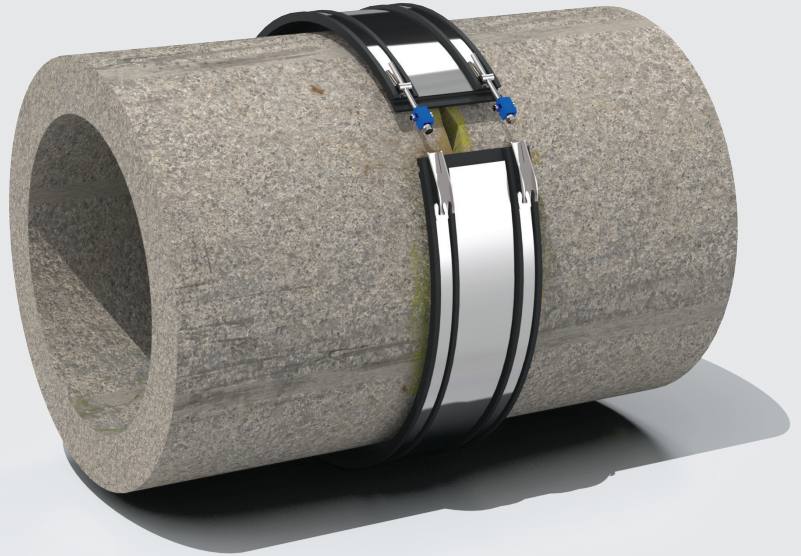


Wraparound Coupling

- Ideal for quick, permanent and reliable repairs
- Reduced repair time
- Manufactured to specific needs of the project
- Easy installation



Fernco Wraparound Couplings are designed to seal cracks in drainage pipes by simply wrapping around the cracked area and connecting. This eliminates the need to cut out and section of pipeline and replace with new.

Rather than being supplied as one complete unit, Wraparound couplings are supplied in components, one of which being a strip of high quality coupling rubber. This method allows users

to leave the drainage pipe undisturbed whilst the repair is taking place, use less repair materials than replacing a section and complete the crack repair faster.

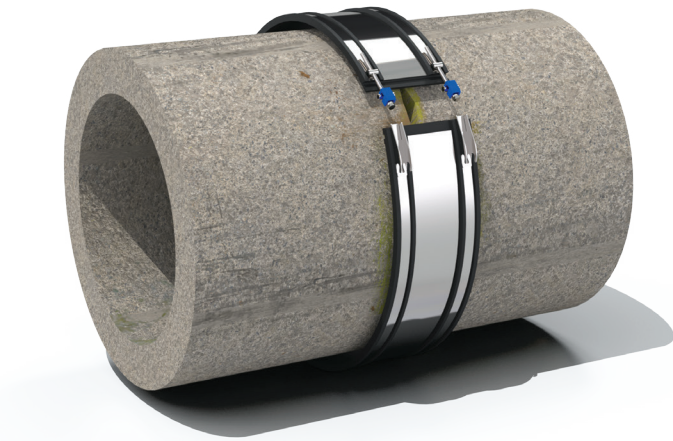
Available in two widths



190mm



370mm



Product Code	WRCXXX MAGWRCXXX
Description	Fernco Wraparound Coupling
Size Range	100mm +
Material	EPDM 1.4301 (304) Stainless Steel <i>Couplings with a different material makeup are available on request.</i>
Pressure Rating	100-999mm = 0.6bar, 8.70psi 1000mm+ = 0.5bar, 7.25psi
Temperature Range	-50°C to 80°C constant, 100°C intermittent
Standards	BS EN 681-1:1996 BS EN 10088-2:1995

Product Code	Coupling Width (mm)	Max Width of Cracked Area (mm)	Size Manufactured Within (mm)	Torque
WRC100	190	60	100-199	13
WRC200	190	60	200-299	13
WRC300	190	60	300-399	13
MAGWRC300	370	195	300-399	20
WRC400	190	60	400-499	13
MAGWRC400	370	195	400-499	20
WRC500	190	60	500-599	13
MAGWRC500	370	195	500-599	20
WRC600	190	60	600-699	20
MAGWRC600	370	195	600-699	20
WRC700	190	60	700-799	20
MAGWRC700	370	195	700-799	20
WRC800	190	60	800-899	20
MAGWRC800	370	195	800-899	20
WRC900	190	60	900-999	20
MAGWRC900	370	195	900-999	20
WRC1000	190	60	1000-1099	25
MAGWRC1000	370	195	1000-1099	25
WRC1100	190	60	1100-1199	25
MAGWRC1100	370	195	1100-1199	25
WRC1200	190	60	1200-1299	25
MAGWRC1200	370	195	1200-1299	25
WRC1300	190	60	1300-1399	25
MAGWRC1300	370	195	1300-1399	25
WRC1400	190	60	1400-1499	25
MAGWRC1400	370	195	1400-1499	25
WRC1500	190	60	1500-1599	25
MAGWRC1500	370	195	1500-1599	25
WRC1600	190	60	1600-1699	25
MAGWRC1600	370	195	1600-1699	25
WRC1700	190	60	1700-1799	25
MAGWRC1700	370	195	1700-1799	25
WRC1800	190	60	1800-1899	25
MAGWRC1800	370	195	1800-1899	25
WRC1900	190	60	1900-1999	25
MAGWRC1900	370	195	1900-1999	25
WRC2000	190	60	2000-2099	25
MAGWRC2000	370	195	2000-2099	25

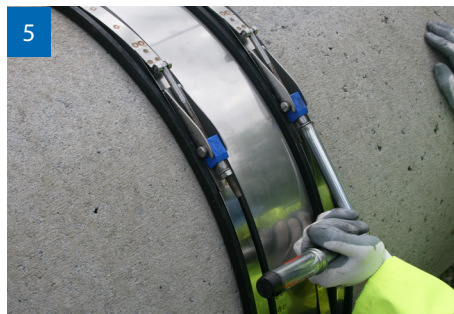
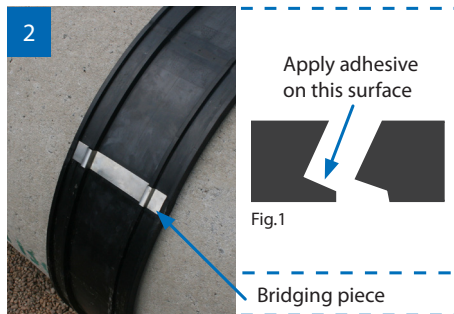
Larger sizes available on request.

Note: Wraparound Couplings are made bespoke to the exact requirements of the connection. ‘Size Manufactured Within’ in the table above is an indication of what size each coupling can be manufactured within.

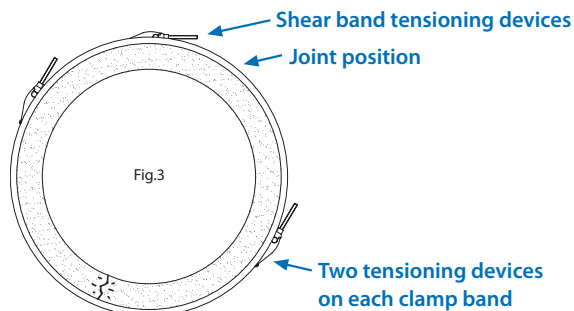
Installation

Preparation

Excavate around and under the pipe at point of damage. Ensure pipe surface is free of loose debris and dirt. Identify the damage location and place a mark near the crown of the pipe in alignment with the damage. Mark the pipe 100mm either side of this position to center the coupling over this point.



1. Wrap the elastomeric sleeve around the pipe and position the joint in an accessible position and with the sleeve centered between the two marks.
2. Apply super glue across the full width of the coupling at the position indicated on fig.1. Bring the profiled edges of the strip together and apply pressure evenly across the joint. Ensure the edges are fully located. Hold this pressure for a minimum 30 seconds. Apply a small bead of super glue across the joint and position the bridging piece centrally over the joint. Hold in position until the adhesive has bonded.
3. Position the clamp bands and the shear band around the elastomeric sleeve.
4. All clamp bands have dual tensioning assemblies. These should be positioned symmetrically either side of the sleeve joint and in a position that allows access for tightening. See fig.3.
5. The tensioning devices on the shear band should be located in a position that allows access for tightening but not directly over the sleeve joint. Minimum distance of 150mm. Tighten all tensioning devices evenly. Tighten the shear band first followed by the two clamp bands. Tighten to the torque recommended on the product identification label.



General Information

Quality, Standards and Approvals

Fernco has been certified by the British Standards Institution (BSI) as a company of assessed capability, with a quality management system which meets the requirements of BS EN ISO 9001:2015

Fernco UK, part of a global group of companies, are the leaders in wastewater connection innovation; utilising the most advanced methods and techniques for precision-manufactured products, all of which comply with or exceed relevant British and European standards to ensure reliability and sustainability.

Environment

Fernco operate Environmental Management Systems which are certified to ISO 14001: 2015.

Supply

Fernco are proud members of the Builders Merchants Federation (BMF). All Fernco products are supplied through a national and global network of distribution and merchant partners. For stockist details, contact Fernco.

Technical Support

Fernco have a team of product experts on hand to support all customers with technical support and advice.

Contact Fernco Technical Department:

Tel: +44 (0) 1226 344100

Email: technical@fernco.co.uk

Enquiries

UK Sales:

Tel: +44 (0) 1226 340 888

Email: sales@fernco.co.uk

International Sales:

Tel: +44 (0) 1226 344 105

Email: export.dept@fernco.co.uk