

Inspiring  
**building solutions**

**FORDINGBRIDGE**  
inspiring design + build







# Inspiring design + build

Fordingbridge is a **specialist design and build contractor** offering **inspiring, permanent, frame and envelope and turnkey building solutions** to all sectors.

Fordingbridge offer Architects, contractors, specifiers and individuals a unique technical and design approach that spans all aspects of a project from concept to completed build.

Our integrated and flexible approach means that our clients can be sure of outstanding design as well as complete control and practicality in relation to cost, quality, construction and building lifecycle. Our design skills, material specialisms and proven construction methodology create distinctive projects with guaranteed performance.

The next few pages will give an overview of how we can enable you to create spaces that are welcoming, enjoyable and enhance the built environment.

Further project case studies and resources can be found on our website.

**Stephen Toone**  
Managing Director

Designing and manufacturing the **most innovative and attractive functioning structures** has always been **at the heart of everything we do.**





# Integrated expertise

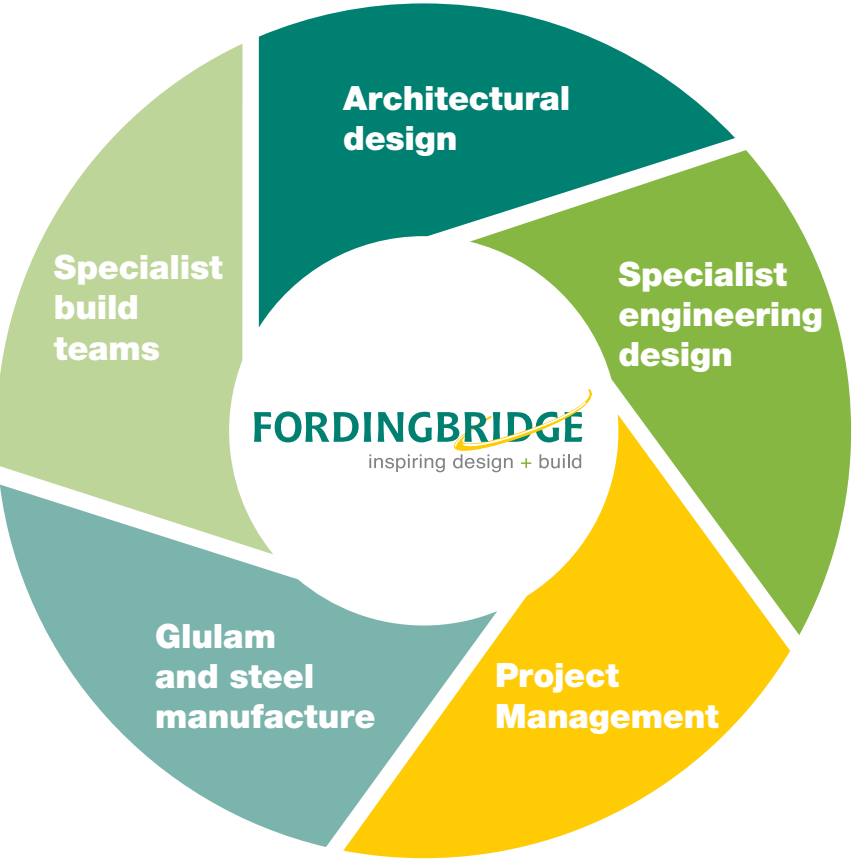
Fordingbridge offer a **unique design and build service** for Architects, contractors, specifiers and individuals alike.

Our proven experience, expertise and technical innovation mean that a Fordingbridge project delivers not only outstanding design but also practicality in relation to cost, quality, construction and building lifecycle.

An integrated approach of traditionally separate project team expertise and functions brings benefits of efficiency and certainty to your project.

Fordingbridge work in partnership with a leading European glulam timber supplier, enabling us to undertake exciting product development and grow together.

As with all our supply chain, our complimentary skill sets and like-minded visions ensure the success of projects of all scales.



- Our in-house CE approved steel fabrication capabilities enable control of and efficiency in quality, timescales and continuous R&D.
- Your project can be flexibly built up from our services:
- Architectural concept and technical design
  - Specialist glulam, steel and hybrid structural engineering design
  - Glulam timber and steel manufacturing and supply
  - In-house Project Management and Health and Safety
  - Planning and Building Control application
  - Specialist contractor and construction teams

We believe that **collaboration with all levels of a project team** is the key to getting the best project solution.

Fordingbridge's **unique design and manufacturing capability** allows them to turn clients' ideas into reality.

Simon Kirton  
Emission Zero Architects

Glulam timber and steel are ideal partners. Used separately or in hybrid solutions, **their material characteristics enable us to produce the large spans and distinctive forms** of our projects.

A commitment to **professionalism, quality and sustainability** is exemplified by our core values, policies, accreditation, corporate memberships and supply chain.



Fordingbridge is fully accredited to share over 50 years' experience and knowledge in the design and build of inspiring structures. CPDs can be hosted at your office or in our very own Greenpower Centre, West Sussex.



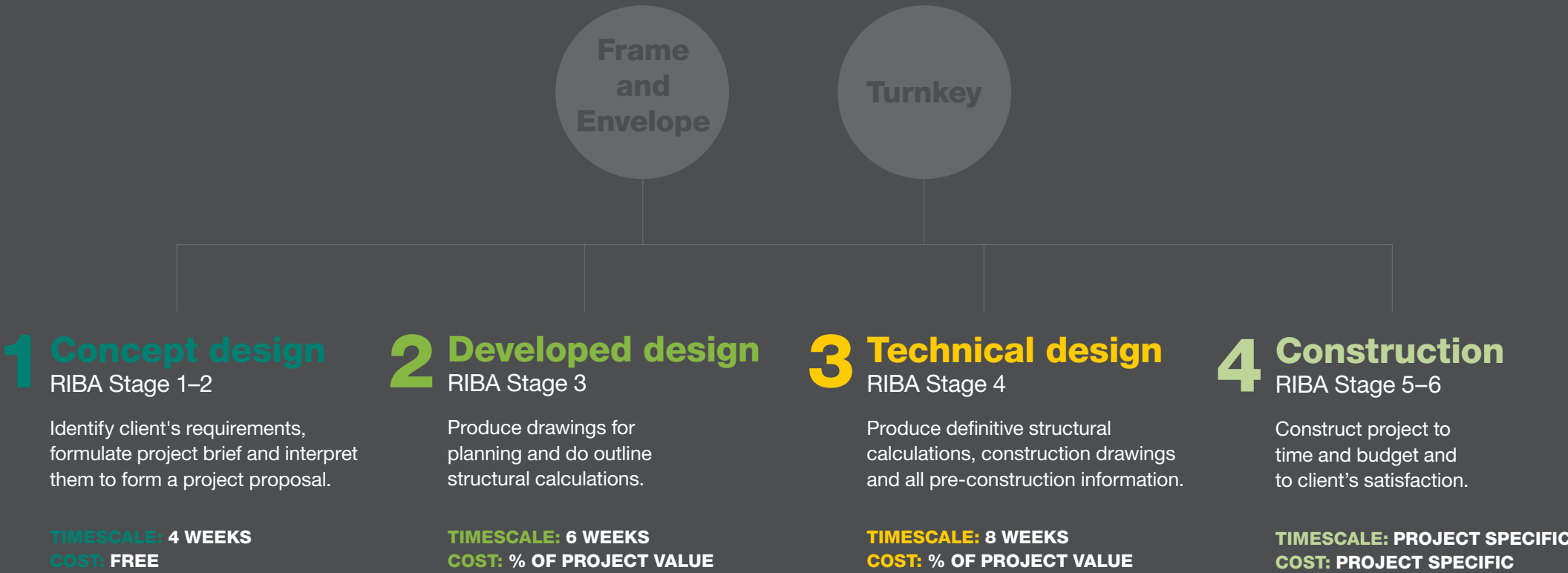


# Service options

Our team have **flexibility to act as your complete design and build contractor or engage collaboratively with your design team and external consultants.**

Equally, we can be involved in your project from initial brief or be appointed at any of the stages below, adding value at every step.

Fordingbridge's service to you is structured into a number of key stages. The content of stages may vary or overlap to suit project specific requirements.



Our clients are at the forefront of everything we do. We aim to interpret every clients' brief to deliver the best projects we can, no matter what scale or budget.

Fordingbridge were a great partner for our project, **delivering a good looking and well executed technical solution, on time and on budget** – what more could we ask.

Paul Pleydell, Director  
Pleydell Smithyman Architects



# The Greenpower Education Trust



## Inspirational headquarters for The Greenpower Education Trust

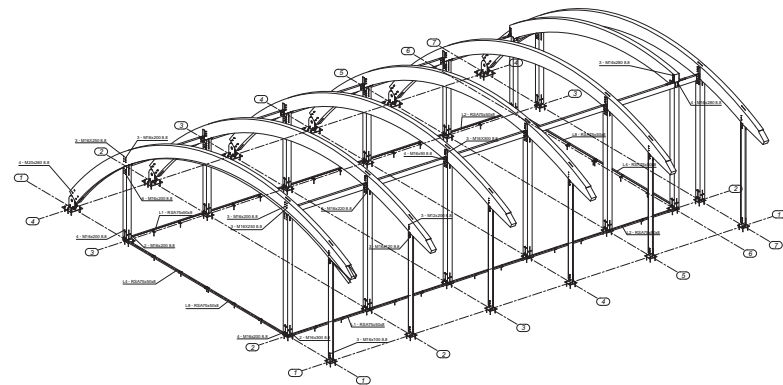
**CLIENT:** GREENPOWER EDUCATION TRUST  
**SECTOR:** EDUCATION  
**SCOPE:** TURNKEY  
**SERVICE:** STAGE 1-4

Fordingbridge designed and built the new headquarters for The Greenpower Education Trust, an organisation that promotes engineering to young people.

The building was designed as an education centre for sustainability and demonstrates key contemporary design principles. The internal environment promotes teamwork and provides a sense of community. It also provides a base for engineering participants and an inspiring workplace for the Greenpower team.

The shape, form and section of the building maximises daylight, controls solar gain and enables better insulation properties through the building's wildflower green roof.

This building is available to visit at any time by appointment.



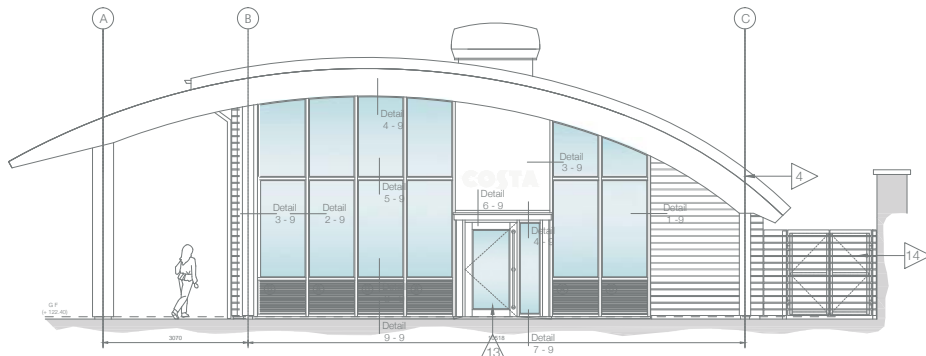
# Costa Coffee Eco Pod

## Net Zero Energy retail building

**CLIENT:** MAIN CONTRACTOR  
**SECTOR:** RETAIL AND COMMERCIAL  
**SCOPE:** FRAME AND ENVELOPE  
**SERVICE:** STAGE 3-4

The first Net Zero Energy retail building for Costa Coffee features advanced sustainable design elements including a curved glulam timber frame, super insulation, underfloor heating, passive ventilation and photovoltaic panels.

Echoing the design of The Greenpower Centre, the building helps meet Costa's objective of consistently reducing energy usage in new stores and reducing the organisation's impact on the environment.



Find more case studies on our website  
[fordingbridge.co.uk](http://fordingbridge.co.uk)

We work with Architects, contractors and designers across all sectors, providing specialist technical design and structural engineering solutions.





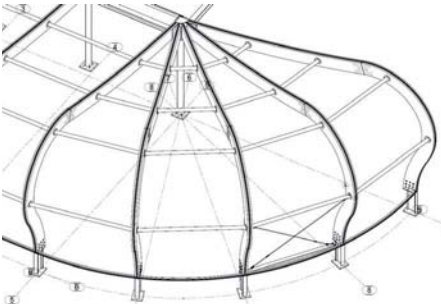
# Whipsnade Zoo

## Visitor Centre and Butterfly and Crocodile Exhibit

**CLIENT:** ZOOLOGICAL SOCIETY LONDON (ZSL)  
**SECTOR:** LEISURE  
**SCOPE:** VISITOR CENTRE – TURNKEY  
BUTTERFLY AND CROCODILE EXHIBIT – FRAME AND ENVELOPE  
**SERVICE:** VISITOR CENTRE – STAGE 1-4  
BUTTERFLY AND CROCODILE EXHIBIT – STAGE 3-4

Fordingbridge were commissioned by ZSL to design and build an inspiring new visitor centre to bring together guest services of ticketing, café, retail and WCs. Our design philosophy was to unite the spatial functions whilst maintaining generous natural daylight and views of the zoo beyond. Sustainability was key to our client. Our glulam timber frame, super air-tight envelope, air source heat pump and underfloor heating ensured that the end product fully reflected the charities’ values. The new centre has completely transformed and created value from the previous entrance area, seeing visitor numbers and retail spend increase.

The Butterfly and Crocodile Exhibit pushed the boundaries of glulam design – utilising a 2.5m radius curve to realise the Architects’ vision of the butterfly wing-form. High internal temperature and humidity also informed the material choice of a hybrid frame and inflated twin-skin cladding system.



# Squires Garden Centre

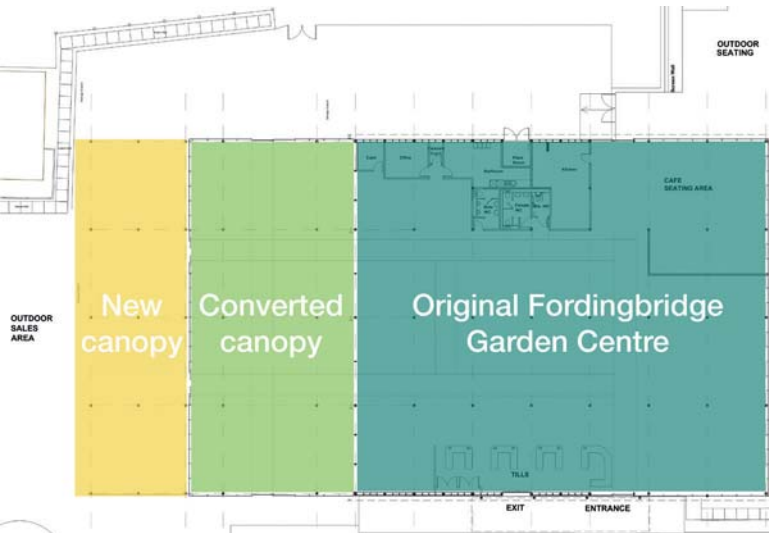


## Garden centre new build and extension

**CLIENT:** PLEYDELL SMITHYMAN ARCHITECTS  
**SECTOR:** GARDEN CENTRE  
**SCOPE:** FRAME AND ENVELOPE  
**SERVICE:** STAGE 3-4

Having built Squires’ Long Ditton site in 2003, the popularity of the centre meant a need for more space. Working with Pleydell Smithyman, an additional 50% of retail space was achieved by converting the canopy section of the building by adding curtain walling and an insulated roof. A new canopy was connected to the newly converted area taking the total new space to 1504m².

The project shows off our steel tapered trellis design, ability to seamlessly transition from building to canopy and ability to phase projects including converting canopies to buildings.





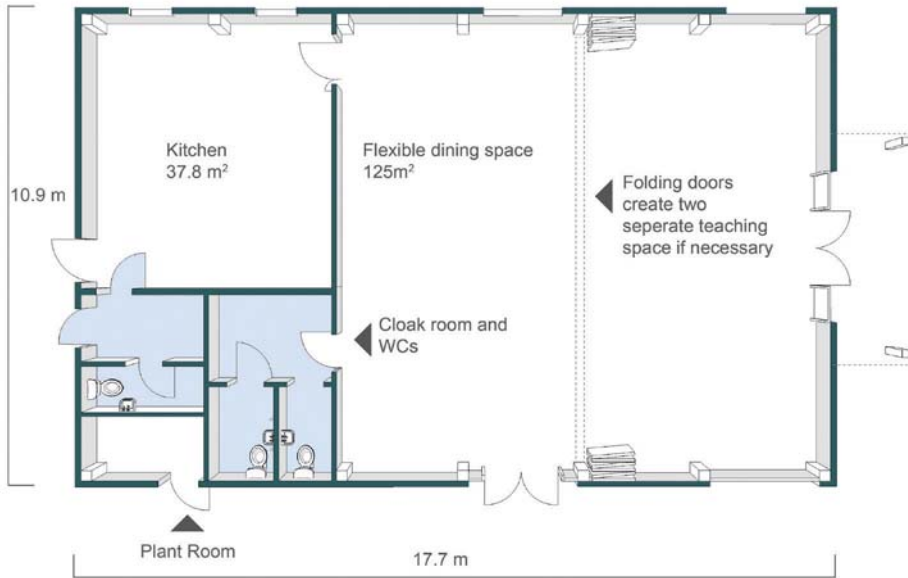
# Durrington First and Middle School



## Flexible dining and teaching space

**CLIENT:** WEST SUSSEX COUNTY COUNCIL  
**SECTOR:** EDUCATION  
**SCOPE:** TURNKEY  
**SERVICE:** STAGE 1-4

Fordingbridge were commissioned to design and build a new dining hall as part of a government initiative to provide hot meals to primary school children across the country. The building includes a kitchen, WCs and a large dining hall which can be split into two independent teaching spaces using a sliding acoustic partition.

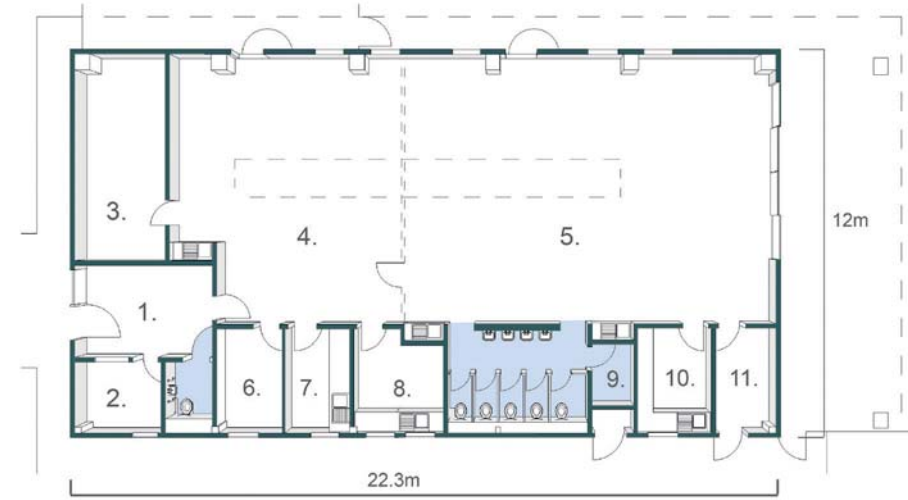


# Tops Day Nursery

## Sixty place children's nursery

**CLIENT:** TOPS DAY NURSERIES  
**SECTOR:** EARLY YEARS  
**SCOPE:** TURNKEY  
**SERVICE:** STAGE 1-4

Designed in collaboration with Thorpe Wheatley Architects, Fordingbridge constructed this 267m² nursery in only 12 weeks including groundworks. The building is comprised of a large open plan play area for three age groups, plus all ancillary spaces. The building features a wildflower green roof, feature tensile entrance canopy and an integrated covered play space in the landscaped garden.



- 1. Reception - 12.28m²
- 2. Office - 5.63m²
- 3. Sleep room
- 4. Under two years playspace - 73.5m²
- 5. 2-5 years playspace - 95.2m²
- 6. Office/training room - 6.4 m²
- 7. changing area - 6.4m²
- 8. Kitchen/staff room - 8.13m²
- 9. laundry room
- 10. Kitchen with cooking facilities - 7.47m²
- 11. Refuse store - 5.96m²





# Fairmead Sixth Form Centre

## Two storey hybrid frame building

**CLIENT:** FAIRMEAD SCHOOL, YEOVIL  
**SECTOR:** EDUCATION  
**SCOPE:** TURNKEY  
**SERVICE:** STAGE 1-4

Fordingbridge worked closely with Fairmead School to deliver a full turnkey package of design, planning and completion for a new sixth form building. The project provides a spacious two-storey building with large entrance atrium and generous teaching spaces on both floors, accessed by a passenger lift. The design also incorporates a wildflower green roof, Thermowood cladding to the front elevation and front and side canopy for weather protection.

The building used a steel and timber frame structural design, perfect for the limited construction site size. Construction was carefully phased and managed to impact as little as possible on the day-to-day running of the school.



# Walkers Garden Centre



Cover image and images by HESS TIMBER © Rensteph Thompson

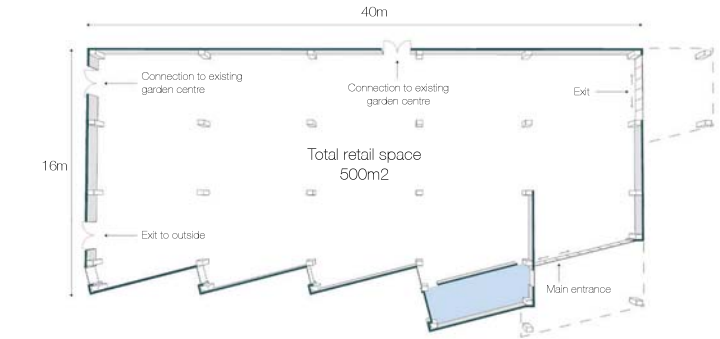
## Inverted curve glulam frame retail building

**CLIENT:** WALKERS NURSERIES AND GARDEN CENTRE  
**SECTOR:** GARDEN CENTRE  
**SCOPE:** FRAME AND ENVELOPE  
**SERVICE:** STAGE 3-4

A stunning 500m<sup>2</sup> retail building housing a farm shop, bookshop and café/delicatessen was designed and built in conjunction with Mason Gillibrand Architects. Fordingbridge completed all groundworks, frame and envelope, including underfloor heating and floor screed for connection to an air source heat pump. The glulam frame was the first UK project to use ‘Hybrid’ timber – a standard spruce glulam with a solid oak facing, giving the appearance of oak glulam.

**“Fordingbridge took care of the whole design and build process and acted in a very professional, flexible and thorough manner throughout. I would recommend working with them entirely.”**

**Graham Bodle, Owner**  
Walkers Garden Centre







Fordingbridge plc  
Arundel Road  
Fontwell, Arundel  
West Sussex BN18 0SD

T 01243 554455  
F 01243 554433

[info@fordingbridge.co.uk](mailto:info@fordingbridge.co.uk)  
[www.fordingbridge.co.uk](http://www.fordingbridge.co.uk)



Designed by [oysterdesign.co.uk](http://oysterdesign.co.uk)