

Technical specification

Timber | Glulaminated



High tenacity fabric roof covering for timber applications

Aluminium gutters and rainwater pipes

Timber Strength Grade GL24

A great advantage of glulamined (glulam) timber is that it can be manufactured in a wide variety of configurations. It is well known for excellent strength and durability, lending itself to architecturally pleasing solutions.

The manufacturing of glulam meets product standard EN 14080:2013 and all associated metalwork delivered as CE marked.

Glulam sizes and availability

Glulam can be manufactured in any length. However, the length of glulam is usually governed by transport and handling limitations.

Timber Species

The species of timber will be primarily governed by the appearance and durability requirements of the client. Fordingbridge primarily utilise the species of Spruce and Larch, although further species are available on request.

Strength Grades

The strength class to which glulam is assigned, depends not only on the grade of the laminations but on the build up of the glulam section. The standard list for glulam strength classes is GL24h, GL28c, GL28h and GL30c.

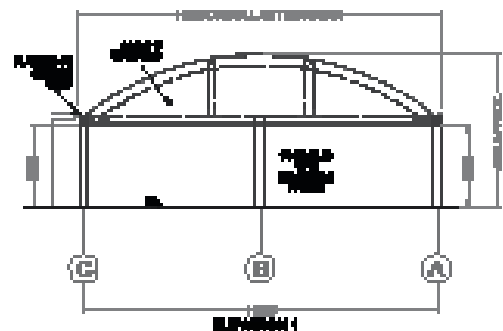
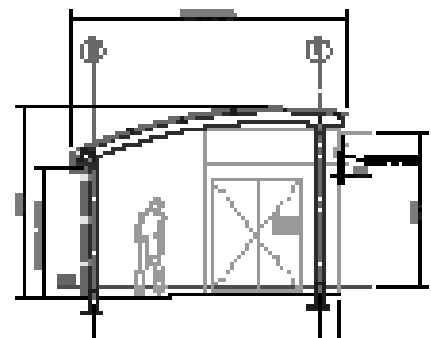
Colour Availability

Available in a variety of coloured stains.

PEFC and/or FSC certifications available

Glulamined Timber

Engineered wood product, manufactured from layers of parallel timber laminations



FORDINGBRIDGE
inspiring design + build