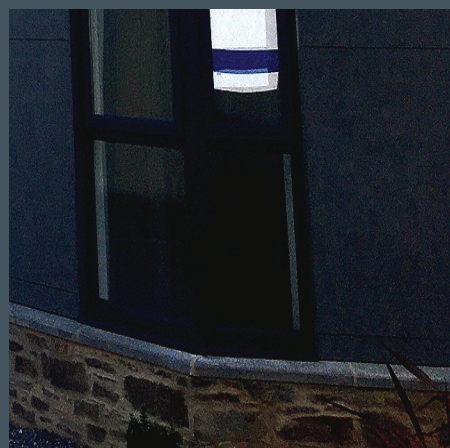
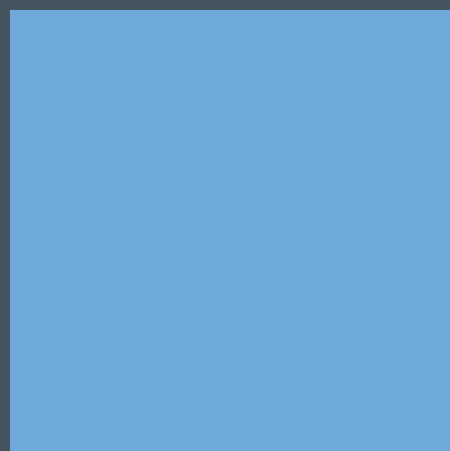
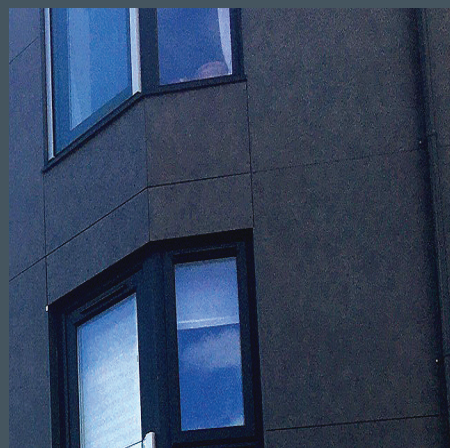
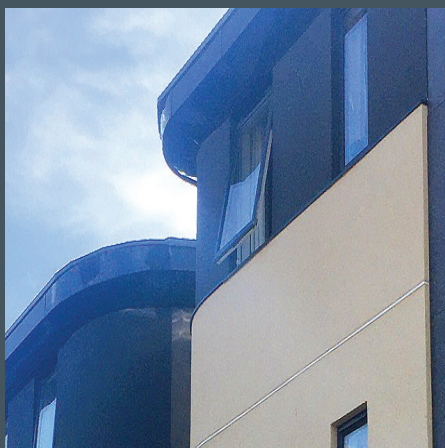


SAS

RAINSCREEN | INSULATION | RENDER | MESH | BEADS



PROWALL

RAINSCREEN CLADDING



WHAT IS

■ PROWALL?

Discover ProWall Rainscreen Cladding, a fully rendered external cladding system that seamlessly blends premium materials to deliver a fully guaranteed solution for your project.

Available in a huge range of attractive colours, the ProWall system creates a fully ventilated cavity allowing the building to breathe, creating exceptional protection from the elements.

PROWALL SYSTEM

1 Timber frame sheathed with breather membrane

Timber battens creating clear cavity **2**

3 Proboard timber frame fixing

4 Proboard - A1 fire rated with a bend radius of 1.5m

5 ProRend Lite Basecoat - Exceptionally flexible with fantastic adhesion

ProRend Colourtex - Highly water repellent through-coloured silicone render **8**

ProRend Colourtex Primer - Ensures a vibrant colour **7**

6 ProMesh Grade 3 - Total reinforcement throughout the system

What makes ■ PROWALL so good ?

- Fire classification of A2-s1,d0
- System durability up to 60 years!
BBA certificate 13/4983
- Horizontal ventilated cavity barrier seals
tested to 99 mins integrity
- Available in 30 standard colours and RAL
and NCS matching to 65000+ colours
- 10-year system warranty
- Reduced preliminary costs due to
quick installation
- Clear cavity - creating a breathable
render system
- Highly water-repellent silicone resin finish
- Low maintenance costs
- Suitable for curved facades, will bend to
1.5m radius
- Suitable for use in very severe weather
exposure zones
- Category 1 hard-impact tested
- suitable for areas of high foot traffic



Up to 60 year system durability*
* Subject to SAS specification

The PROWALL Service



Free of charge specification service providing:

- A practical completion certificate when works have finished
- Comprehensive hands-on training courses for applicators
- Recommendations of sub-contractors to complete works
- Details of required materials including sundry items
- U value and condensation risk analysis calculations
- Finish samples available in colours chosen by you
- Technical, safety and maintenance datasheets
- Full technical support from our offices
- CAD details specific to your project



Where should you use PROWALL?

-  Timber frame
-  Warm steel frame
-  Cold steel frame
-  SIPS (Structural Insulated Panel System)*
-  Masonry (renovation)

Full technical manual available on request,
email info@sas-europe.com today.



*Subject to
consultation
of a structural
engineer

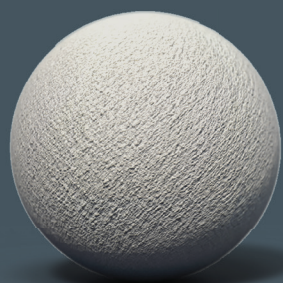
Take a look at the
texture up close!



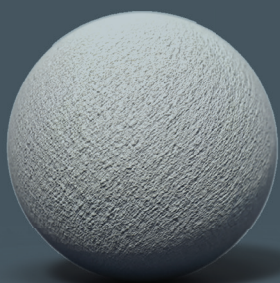
Sharp modern finish

Our 1.5mm finish provides a clean crisp modern look whilst avoiding glancing light issues.

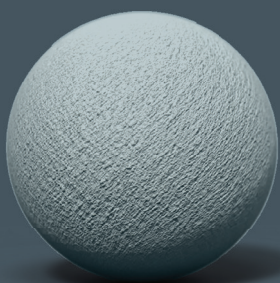
30 *beautiful* standard colours available...



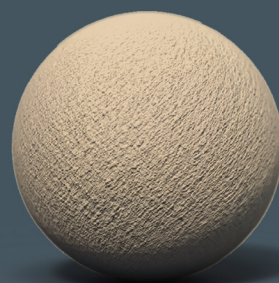
African Grey



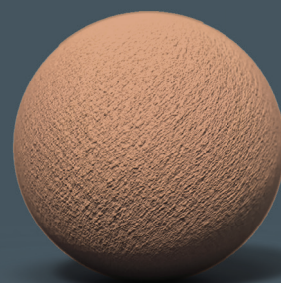
Atlantic



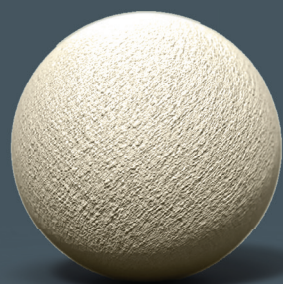
Cadet



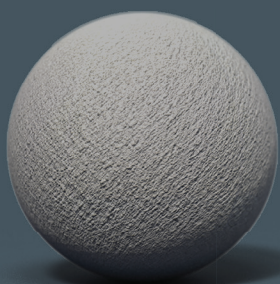
Bamboo



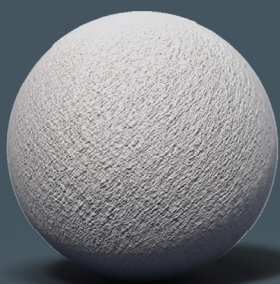
Brick



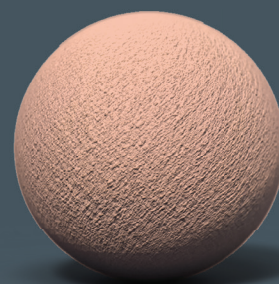
Cream



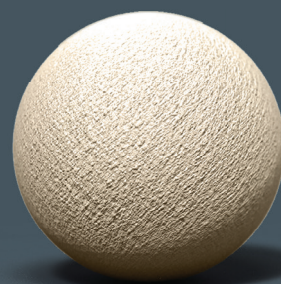
Dolphin



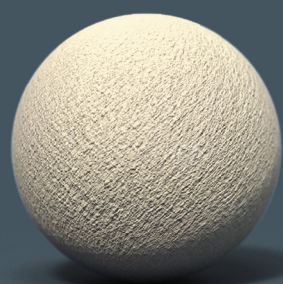
Dove



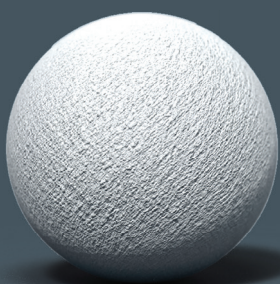
Dusk



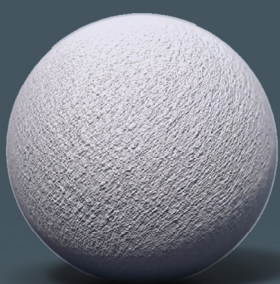
Fawn



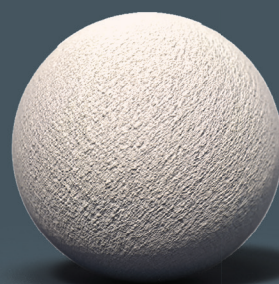
Mr Whippy



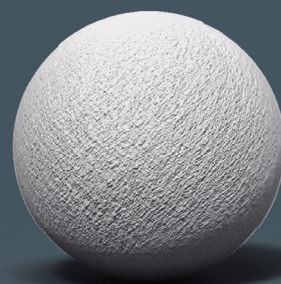
Ocean



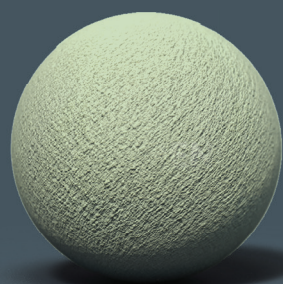
Parma Violet



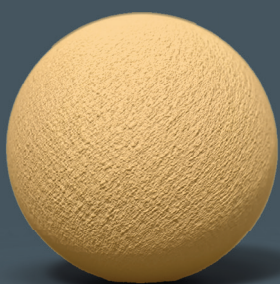
Peach



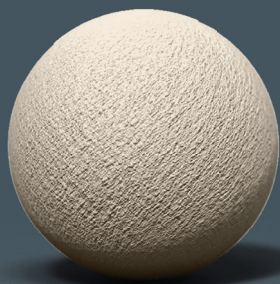
Pigeon



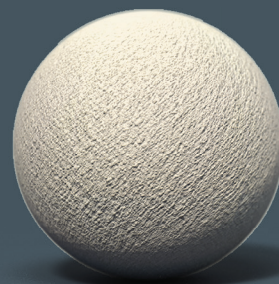
Sage



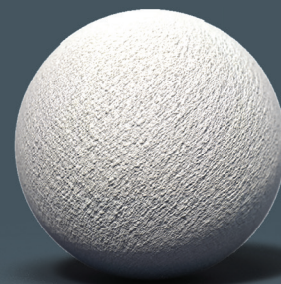
Sunbeam



Vanilla

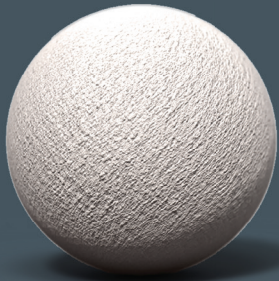


Wheat

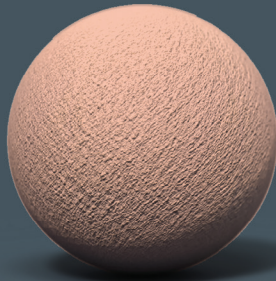


White

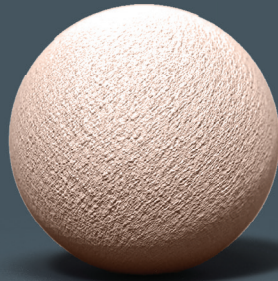
... or if you cannot see the **exact**
colour you desire then we can tint
to your **perfect colour match.**



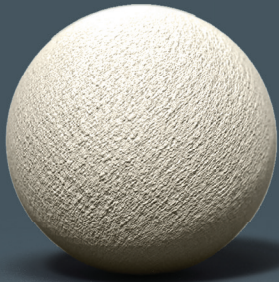
Candy



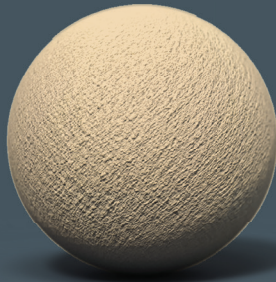
Cappuccino



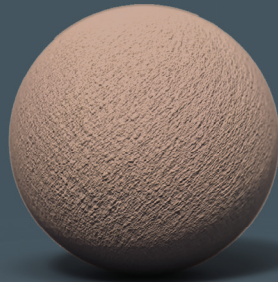
Cottage



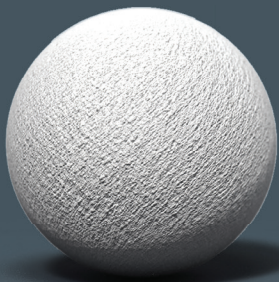
Ivory



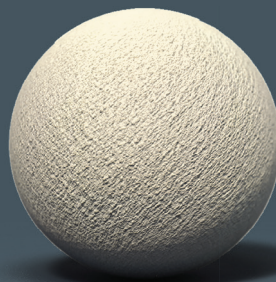
Latte



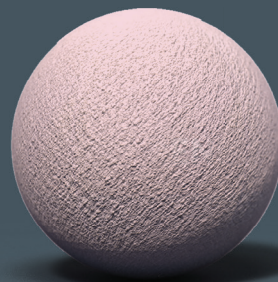
Mocha



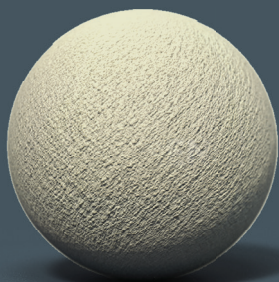
Platinum



Primrose



Rambling Rose



Willow

65,000+
■ **PROWALL**
colours

**Transform your
projects and tailor to
your clients' unique
taste with Colourtex.**

The Colourtex range comes
in 30 standard colours.

Additionally, we can tint
Colourtex render to your
choice of RAL, NCS or BS
colours, or even match a
coloured sample.

Tinted at our
headquarters
using the
universally
recognised
NCS colour system.



And with our range of
18 coloured ProBead
rendering beads
in a wide range of
profiles, it's easy to
achieve the perfect finish.

Call our Technical Sales Team to
order a colour sample today on:

01647 24620

PROBEAD

All the bead, you'll ever need

18

standard bead colours

- BBA certified for 25 years
- Through coloured PVCu
- 100% recycled bead
- Non-corrosive & durable
- 34 external & internal profiles
- BS EN 13914:2005 compliant
- Non-combustible
- 25-year guarantee



Angle

For a sharp corner.
Available in wide and standard.



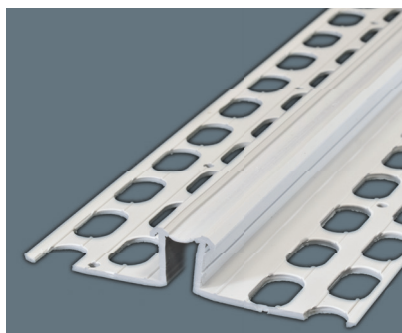
Stop

To finish and protect
render edges.



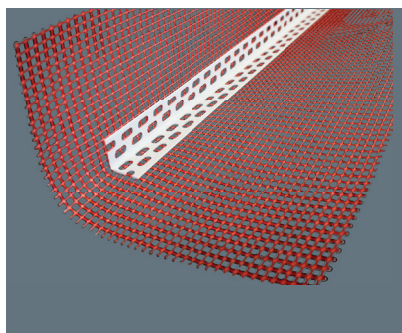
Bellcast

To form and protect the
lower edge of the render.



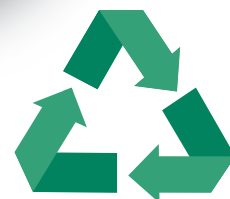
Expansion

Placed over joints and
changes in substrate to
reduce cracking.



Plus beads

A range of specialist beads
including meshed angles,
window reveal and base bead.





■ PROMESH

Quality render mesh, it's on a roll

Why choose reinforcing ProMesh?

- Alkaline resistant
- Lightweight
- Pressed weave
- 5 grades
- 10-year guarantee
- Durable and tear resistant

To discuss your ProMesh needs, call our friendly team on 01647 24620.

■ PROCENTRE

CONSTRUCTION TRAINING COLLEGE

- Earn certification
- Join our Applicator Network
- Practical and classroom learning
- Case studies and demonstrations
- Use products on our practice walls
- Day courses held at our centre in Devon
- Learn render system design and application

To book onto a free ProWall or ProRend training course, email info@sas-europe.com for available dates.





SAS



PROWALL

PREMIER RENDER SYSTEMS

RENDERED RAINSCREEN CLADDING

SAS has over 35 years of experience in rendering and façades, covering every aspect from application to practical advice and training.

We provide the highest standard, quality products to support your build. With our knowledgeable technical team on hand, we work with you to achieve the results you want.

SAS constantly seeks to innovate, supplying a complete range of premium quality products that meet every situation, and our commitment to outstanding service means you'll get the help and advice you need.

Customers enjoy the benefits of long-lasting durability, fast application and our excellent ProWall 10-Year Guarantee.



Call us today: **01647 24620**

sas-europe.com

ProWall is part of the SAS (Europe) Ltd range of products and systems. Information contained in this brochure is correct at the time of print. SAS (Europe) Ltd reserve the right to make alterations to the content of this brochure and to the products and services we make available as part of our continuing commitment to improvement.

SAS (EUROPE) LTD
CHERITON BISHOP | EXETER | EX6 6JE | UK
T: +44 (0)1647 24620 F: +44 (0)1647 24020
E: info@sas-europe.com

