

*axis*

Automatic Entrance Systems

**STANLEY®**

# Clean Room

**2000 / 3000 / 5000 DOOR SERIES**

- **CLASS 1 & CLASS 10 RATED**
- **MICROPROCESSOR CONTROLLED**
- **ADVANCED SENSOR OPTIONS**
- **CONTROLLED ENTRY**



## CONTAMINATION-CONTROLLED ACCESS FOR TODAY'S HIGHLY SENSITIVE TECHNOLOGICAL ENVIRONMENTS

Industry rated for biotechnology, pharmaceutical, aerospace, medical & dental devices, hospitals, industrial applications and more.

Class 1 and Class 10 rated sliding doors are designed and manufactured for conventional or modular construction.

Advanced motion & video sensors provide complete protection and contamination controlled entry into clean room areas and vestibules.

Microprocessor controller continually monitors door position and specially designed urethane wheels provide smooth, trouble-free operation.

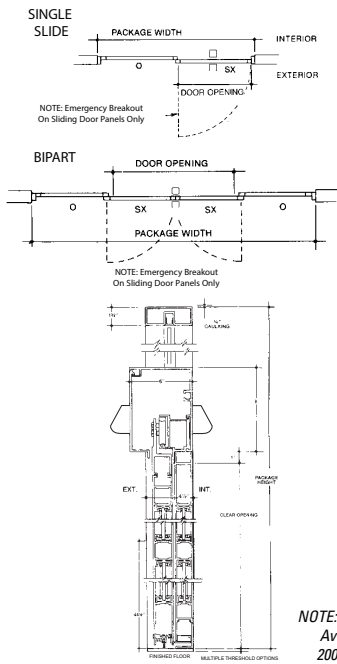
Anti-riser wheels lock each door in its track while a fibreglass reinforced toothed drive belt prevents slippage and uneven closing.

5200 & 5300 Telescopic series opens 25% wider than two-panel and four-panel sliding door configurations.

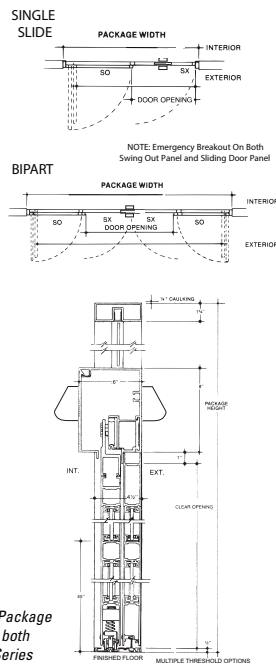
Full breakout package allows all panels to swing out and stack to the side for emergency egress.

**Stanley Automatic Door Systems - the safest, most cost effective solutions available today.**

**2000 SERIES**



**3000 SERIES**

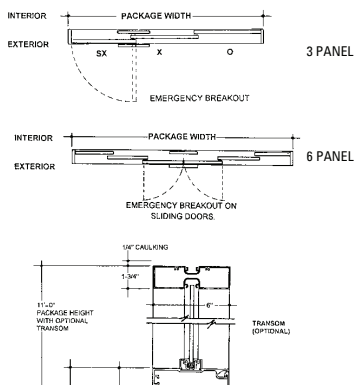


Door packages are custom manufactured to fit your job requirements. For sizes greater or smaller than typical, contact Axis Automatic Entrance Systems.

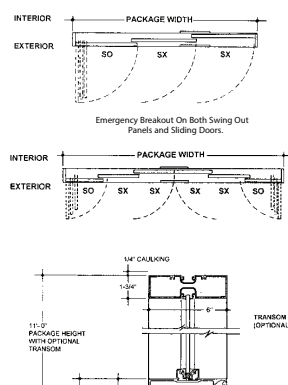
**2000 SERIES, 3000 SERIES**

**HEADER SIZE:** 8" (203mm) high x 6" (152mm) deep  
**TYPICAL HEIGHT:** 7'-8" (2.3m), clear door opening of 6'-11" (2.1m)  
**TYPICAL WIDTH:** Single Slide: 7' to 9' (2.1m to 2.7m), clear door opening width of 35 1/2" to 47 1/2" (901mm to 1206mm). Bi-Part: 10' to 14' (3m to 4.2m), clear door opening width of 48" to 72" (1219mm to 1828mm)  
**TYPICAL DOOR PANEL WEIGHT:** up to 220 pounds each (100kg)  
**DRIVE SYSTEM:** 1/4 HPDC motor, gear drive, toothed belt  
**CONTROLLER:** microprocessor based, safety logic, watchdog  
**LED SENSORS:** Combined activation and monitored presence sensors as standard. A wide range of alternative activation devices available  
**BREAKOUT:** SX panel on the 2000, SX and SO panels on the 3000  
**POWER REQUIRED:** 220VAC, 50HZ, 5amps min  
**CODE COMPLIANCE:** UL, cUL, ANSIA156.10, UBC, BOCA, ICBO, NFPA101, Class 1 Clean Room Rated

**5200 SERIES**



**5300 SERIES**



**5200 SERIES, 5300 SERIES**

**HEADER SIZE:** 7" (177mm) high x 6" (152mm) deep  
**TYPICAL HEIGHT:** 7'-8" (2.3m), clear door opening of 6'-11 7/8" (2.1m)  
**TYPICAL WIDTH:** 3 panel: 6' (1.8m) to 12' (3.6m), clear door opening width of 35 5/8" (914mm) to 84 5/8" (2159mm) 6 panel: 7' (2.1m) to 14' (4.2m), clear door opening width of 35 9/16" (902mm) to 91 9/16" (2324mm)  
**TYPICAL DOOR PANEL WEIGHT:** up to 150 pounds each (68kg)  
**DRIVE SYSTEM:** 1/4 HPDC motor, gear drive, toothed belt  
**CONTROLLER:** MC521Pro programmable processor  
**LED SENSORS:** Combined activation and monitored presence sensors as standard. A wide range of alternative activation devices available  
**BREAKOUT:** lead panel (SX) on the 5200, all panels (SX, SX, SO) on the 5300  
**POWER REQUIRED:** 220VAC, 50HZ, 5Amp min  
**CODE COMPLIANCE:** UL, cUL, ANSIA156.10, UBC, BOCA, ICBO, NFPA101, Class 10 Clean Room Rated



**Axis Automatic Entrance Systems Ltd**  
 Unit 6, Queens Park Industrial Estate, Studland Road,  
 Northampton, NN2 6NA.  
 Tel: 01604 212500 · Fax 01604 212495  
 Email: sales@axisautomatic.com  
 www.axisautomatic.com

