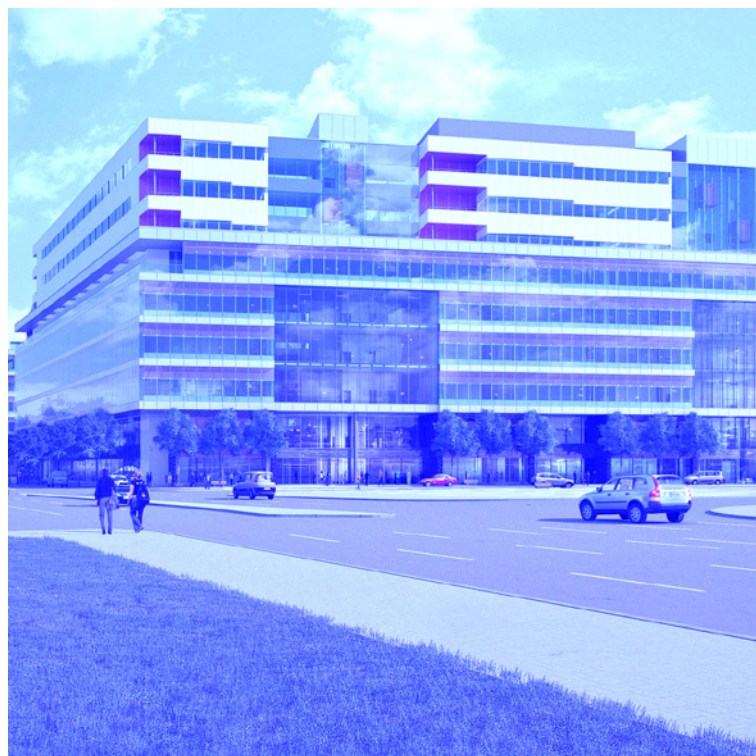




THE PROJECT BOOK



PROJECT NEWS FROM THE UK'S LEADING ACCESS COVER MANUFACTURER



THE



HOWE GREEN

PROJECT BOOK

Howe Green, the UK's leading manufacturer of floor, wall and ceiling access covers, is pleased to showcase a selection of recent projects.

Purpose-built floor access covers are designed to provide safe and easy access to concealed services and can be used with any type of flooring. They have been installed in new and refurbished buildings across the world including shopping centres, schools, hotels, airports, hospitals, offices and railway stations.

Covers can be supplied as a single unit, duct runs or as a multipart configuration. Maintenance and corrosion-free, they are also double sealed to resist the ingress of dirt, water and other contaminants. Show-edge options are available to suit any kind of surrounding environment including brass, aluminium and stainless steel. The Howe Green range includes floor edge trims, modular linear drainage channels, wall access hatches and ceiling access panels.



CONTACT

www.bilcouk.co.uk

e:info@howegreen.co.uk

t: 01920 463230



**7500 Series Medium-Duty
Aluminium Floor Access Covers**

Interior/exterior floor access covers
5 tonne pneumatic wheel loading
Hard floor finishes
Aluminium or Stainless Steel

Howe Green Access Covers Perform At 'The Other Place'

Howe Green's metal fabricated access covers were selected for the Royal Shakespeare Company's studio theatre renovation project, 'The Other Place' in Stratford-upon-Avon.

The transformed venue houses a new 200-seat theatre space along with the RSC's extensive costume store. Importantly, 'The Other Place' provides a chief learning hub for students from the University of Birmingham.

Howe Green's 7500 Series Medium-Duty Aluminium Floor Access Covers were fitted on the ground floor to provide easy access to underfloor ducting services throughout the building. Main contractor BAM Construction fitted the panels on a suspended concrete slab. Once installed they were in-filled with K-screed followed by a resin finish to create a discreet access solution for routine and emergency servicing.

The covers have a minimal show-edge and can be easily raised with lifting keys. They are made to sit flush with the surround, guarding against the risk of slips and trips. Suitable anywhere heavy loading is required - the 7500 Series access covers can accommodate a 5-tonne pressure from a pneumatic tyre.

Highly durable and double-sealed to prevent dirt and grease ingress, each access panel from Howe Green is made to the client's exact specifications, but without the price premium typically associated with bespoke manufacturing. Instead, Howe Green is able to offer access covers, hatches and panels made to your exact specification quickly and efficiently.



CONTACT

www.bilcouk.co.uk

e: info@howegreen.co.uk

t: 01920 463230



Credit: Hans Thorwid/Nationalmuseum

7500 Series Medium-Duty Aluminium Floor Access Covers - Duct Run

Interior/exterior floor access covers
5 tonne pneumatic wheel loading
Hard floor finishes
Aluminium or Stainless Steel

Howe Green Supply “Specials” For Renovation Of Nationalmuseum Of Art, Stockholm

Howe Green supplied specially manufactured floor access covers for Sweden’s premier art and design museum. The Nationalmuseum of Art in Stockholm is currently closed whilst undergoing an extensive restoration programme. The aim of the renovation is to create a more modern environment that will enhance the overall visitor experience whilst retaining the museum’s architectural heritage.

The transformation will include the installation of a state-of-the-art climate control system; the reinstating of bricked up windows to flood the space with natural light; new security technology and the expansion of the public spaces to house exhibits and visitor amenities.

Howe Green’s Swedish distributor, Elkington AB, supplied floor access covers for the project. Elkington have worked with Howe Green since 1999 and have extensive knowledge of their range of standard and bespoke access solutions. Howe Green’s 7500 Series Medium-Duty Aluminium Floor Access Covers were fitted as duct runs in the museum. The majority of the covers were infilled with limestone floor tiles to provide a virtually invisible finish.

The remaining units have a visible concrete finish. All the covers were supplied double sealed to ensure the highest performance and quality. The seamless fit of the floor access covers will help to reduce the risks of slip and trip hazards. The covers are highly functional, providing easy and safe access to the cabling and services concealed underneath the ducts. Once renovation work is completed and the museum reopens the covers will ensure services can be accessed with the minimum of disruption to daily operations.



CONTACT

www.bilcouk.co.uk

[e:info@howegreen.co.uk](mailto:info@howegreen.co.uk)

t: 01920 463230



7500 Series Medium-Duty Stainless Steel Type 316 Floor Access Covers

Interior/exterior floor access covers
5 tonne pneumatic wheel loading
Hard floor finishes
Aluminium or Stainless Steel

Howe Green Makes A Splash At East Riding Leisure, Bridlington

Howe Green supplied access covers for a new £25 million Leisure Centre - East Riding Leisure in Bridlington.

The contractor, BAM Construction Ltd North East, appointed tiling specialists P.Plunkett Tiling Contractors to carry out the installation of the ceramic tiling to the outside of the pools and the tiling and mosaic to the inside of the new centre's three pools.

Nine of Howe Green's 7500 Series Medium-Duty 316 Grade Stainless Steel Floor Access Covers were fitted into the ceramic tiled floor around the pool surround in the main pool hall area. The access covers were infilled with anti-slip porcelain floor tiles to provide a flush finish, both functional and aesthetically pleasing. The seamless fit ensures the reduced risk of slips and trips in an inclusive swimming pool environment designed for a variety of end users.

The floor access covers ensure that access for the maintenance and upkeep of the pool sumps and pool balance tanks located beneath the tiling is quick and easy resulting in minimum disruption to the operation of the facility.

All Howe Green access covers are available with a double sealed option which ensures the highest levels of security and hygiene and helps to prevent the ingress of water. Suitable for internal and external use the Medium-Duty 316 Grade Stainless Steel is non-corrosive and will not rust, even in a swimming pool environment where it is constantly being exposed to water, chemicals, and varying humidity and pH levels.



CONTACT

www.bilcouk.co.uk

e:info@howegreen.co.uk

t: 01920 463230



7500 Series Medium-Duty
Stainless Steel Floor Access
Covers - fitted into raised flooring

Interior/exterior floor access covers
5 tonne pneumatic wheel loading
Hard floor finishes
Aluminium or Stainless Steel

Howe Green “Raises The Bar” At Former Olympic Site

During the 2012 London Olympics and Paralympic Games the International Press and Broadcast Centre played host to the world’s media. Fast forward to 2018 and these key buildings continue to form a central element of the Queen Elizabeth Olympic Park. The Centre is undergoing a commercial redevelopment to become Here East - the exciting digital quarter for East London.

Howe Green floor access covers were specified by architect Hawkins\Brown for one of the office spaces within BT Sport. Howe Green supplied twelve 7500 Series Medium-Duty Stainless Steel Floor Access Covers for the project. The covers were to be installed into a raised floor system. They were ordered with stainless steel Z profiles to provide support to the access cover within the raised floor. The covers were used in corridors throughout the building to provide safe and easy access to access junctions in the drainage systems. They were initially covered with plywood and were then infilled with a vinyl flooring finish to match the appearance of the existing raised floor system.

In recent years the requirement for different floor finishes, improved security and the ability to easily reconfigure space has led to an increase in demand for Howe Green access covers installed in raised flooring. Supplied with a double seal the 7500 Series Medium-Duty Stainless Steel Floor Access Cover address the need for a secure solution in an office setting with relatively high pedestrian footfall. The vinyl infill offers a seamless floor finish which will reduce the slip or trip hazard.



CONTACT

www.bilcouk.co.uk

e:info@howegreen.co.uk

t: 01920 463230



HSE 75 Series Hinged Floor
Access Cover

Interior/exterior hinged access hatch
5 tonne pneumatic tyre loading
Hard floor finishes
Aluminium or Stainless Steel

Swedish Hospital “Takes A Chance” On Howe Green

Howe Green supplied a number of HSE 75 Hinged Aluminium Floor Access Covers for the £1.5 billion New Karolinska Solna University Hospital (NKS) in Stockholm through their Swedish distributor, Elkington AB. From their base in Stockholm Elkington have been distributing Howe Green access covers for projects across Sweden since 1999.

The gas assisted hinged HSE 75 hatches provide easy and safe access to the underground power stations and escape routes located underneath the hospital. They have been installed in the various areas of the hospital and infilled with both concrete and tiled flooring to provide a seamless, flush floor finish. The hinged access hatches are ideal for environments where regular access to concealed services is required for maintenance purposes and in public places where health and safety is crucial.

The HSE 75 can be infilled with ceramic tiles, marble, terrazzo, concrete, resin, wood or parquet floors and is suitable for pedestrian and vehicle traffic up to a 5 tonne pneumatic tyre wheel load. The hatches can be supplied as a single cover or a configuration of duct covers in standard sizes from stock or precision made to order.

Options include a top and underside release latch, for added security and safety, a double seal and fire rating up to 3 hours BS 476: Part 20: 1987.

The Howe Green range of access covers are tried and tested in a healthcare setting. They have been specified in hospitals around the world including Southmead Hospital in Bristol, Queen’s Hospital in Romford, Great Ormond Street Hospital and the Lennox Addington Hospital in Ontario, Canada.



CONTACT

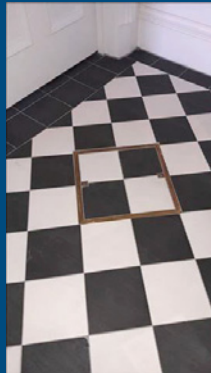
www.bilcouk.co.uk

[e:info@howegreen.co.uk](mailto:info@howegreen.co.uk)

t: 01920 463230



Credit: Graham Construction



5000 Series Light- Duty Aluminium
Floor Access Covers - Single,
Brass Show-edge

Interior/exterior floor access covers
Pedestrian loading
Hard floor finishes
Aluminium or Stainless Steel

Keeping the Castle Cosy with Howe Green Access Covers

Howe Green's Light-Duty 5000 Series Floor Access Covers are playing their part in keeping a Victorian castle warm and cosy by providing safe and easy access to central heating valves.

The Castle has had an interesting past but after falling into a state of disrepair it was closed for 25 years. It reopened in July 2016 following a £19 million refurbishment. The Category A listed building is now a museum and cultural centre owned by the local council. The 5000 Series Light-Duty Aluminium Floor Access Covers from Howe Green were specified to provide access to the underfloor services, located in the corridors on the first floor of the Castle. Sixteen covers were supplied, in various standard sizes.

The covers were specified with the option of a brass show-edge. They were installed by GRAHAM Construction and then infilled with carpet or ceramic tiles, depending on their location. The brass show-edge with matching lifting points, which are anchored to the inner frame, give an even higher level of aesthetic appeal than the standard aluminium show edge. The brass finish fits perfectly with the historic surroundings of the Castle. The seamless fit with the floor finish reduces the risk of slips and trips.

When maintenance is required to the central heating valves the covers can be removed safely, quickly and easily with the use of lifting keys, keeping disruption to the running of this premier tourist attraction to a minimum.



CONTACT

www.bilcouk.co.uk

e:info@howegreen.co.uk

t: 01920 463230



 **HOWE GREEN**



CONTACT

www.bilcouk.co.uk

[e:info@howegreen.co.uk](mailto:info@howegreen.co.uk)

t: 01920 463230