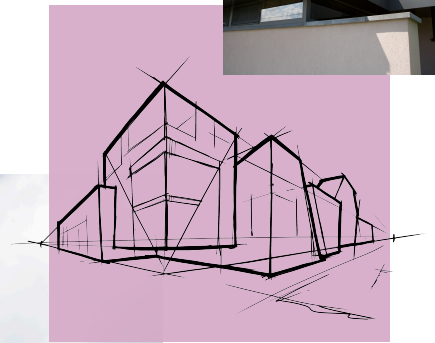


# Product Data Sheet

## Rockpanel Uni



# Rockpanel Uni

## Key product data

### Product description

Rockpanel Uni offers clarity and simplicity. Choose from various RAL colours. Easy to install, long lifetime, virtually no maintenance. Ideal for facades for newbuild, renovation or around the roof and small applications.

### Assortment

Product line	Board composition	Thickness	Standard dimensions
Rockpanel Uni	Durable 6 mm	6 mm	1200/1250 x 2500/3050 mm

### Surface

The surface of Rockpanel boards is treated with layers of water-borne polymer emulsion primer and paint on one side. An additional ProtectPlus coating comes standard with Rockpanel Metals, Chameleon, Stones and Woods. This ProtectPlus layer makes the board extremely easy to clean; even graffiti can be washed off. ProtectPlus is available as an option for the Rockpanel Colours boards.

### Fire safety

Rockpanel boards offer high performance when assessed for reaction to fire. Due to the nature of the stone wool fibres and the low binder content the boards have a low calorific value, this means that they will hardly contribute to a fire when exposed. As a result, the addition of environmentally unfriendly flame retardants is not needed. The Rockpanel products are tested in accordance with the European harmonized technical specification (EAD 090001-00-0404 and EAD 090001-01-0404) and are classified in accordance with EN 13501-1. The Euroclass classification of all Rockpanel products is based on testing with non-combustible mineral wool insulation. For the field of application covered by the classification, please see the relevant Declaration of Performance.

For high-rise and high-risk buildings, Rockpanel recommends the application of non-combustible (Euroclass A1 - A2-s1,d0) cladding and insulation.

### Key product properties

Rockpanel Uni	Durable 6 mm	Unit	Test/classification method
Optical properties			
Colours	ProtectPlus: Colours: 3-4	Class on greyscale	ISO 105 A02
Fire			
Fire classification	B-s2,d0	Euroclass	EN 13501-1
Physical properties			
Weight	6.3	kg/m <sup>2</sup>	EN 323
Density, nominal	1050	kg/m <sup>3</sup>	EN 323
Thermal conductivity	0.37	W/m·K	EN 10456
Water vapour permeability Colours 23 °C and 85 % RH	< 1.8	m	EN 12572
Cumulative dimensional change length %	0.085	%	EN 438-2
Cumulative dimensional change width %	0.084	%	EN 438-2
Mechanical properties			
Bending strength, length and width	≥ 27	N/mm <sup>2</sup>	EN 310 / EN 1058
Modulus of elasticity	≥ 4015	N/mm <sup>2</sup>	EN 310

# Rockpanel Uni

## General product information

Rockpanel is recognised for its blend of natural qualities that make it a unique choice for exterior cladding and other architectural applications. Derived from the abundantly available rock, basalt, Rockpanel possess inherent natural properties that contribute to their durability, sustainability, fire resilience, ease of installation and aesthetic versatility.

### Sustainability and environment

Rockpanel boards have a third-party verified Environmental Product Declaration (EPD), in all according to the EN15804, where we transparently communicate the environmental performance of our products.

The influence on air quality and release of dangerous substances to soil and water has been determined to achieve the European Technical Assessment. The analysis showed Rockpanel boards contain no dangerous materials such as biocides; the manufacture of Rockpanel boards does not involve the use of flame retardants or cadmium. The formaldehyde concentration is  $\leq 0.0105 \text{ mg/m}^3$  which relates to formaldehyde class E1.

### Visual appearance

**Surface quality:** Rockpanel boards are produced with the utmost care and individually checked before being approved. In the event of doubts the panels are judged visually for aesthetic flaws, in daylight, without sight enhancements, from a distance of at least 5 metres in front of the surface of the façade element, with an observation angle of 45° (horizontally/vertically). **Batches:** Rockpanel boards are produced using incoming inspection, process assurance and quality control by which Rockpanel boards in standard RAL/ NCS colours out of different batches can be combined. However for project related orders, the whole order for a given project must be ordered as a single batch.

### Packaging

Most Rockpanel boards are covered by a film to protect the decorative finish. Site measurements can also be marked on this film to aid the installation process. If you're marking anything on protective film, it's advisable to test the pen on a sample board first. This step ensures compatibility and helps prevent potential bleeding through. Some permanent markers may bleed through the film, so a preliminary test can save you from any unwanted surprises. Remove the protective film:

- directly after mounting, if attaching mechanically with screws or manual nailing;
- before priming the board for adhesive bonding, not required but recommended;
- before installing when using a pneumatic hammer.

The protective film can be recycled. Rockpanel Natural, Rockpanel Lines<sup>2</sup> and Rockpanel Metals (White Aluminium and Grey Aluminium) are delivered without protective film. Handling of these boards needs extra attention.

### Maintenance

Rockpanel products generally require low maintenance, primarily needing only rain for cleaning. However, in cases where additional cleaning is necessary, such as from bird droppings or tree residue, annual inspections and occasional cleaning with mild, non-solvent based products are recommended. Specific cleaning instructions vary by product type:

- Rockpanel Colours can be cleaned with lukewarm water and mild cleaning agents
- Rockpanel with ProtectPlus can handle anti-graffiti cleaners if needed

It is crucial to follow cleaning agent manufacturer instructions, conduct suitability tests on inconspicuous areas and avoid abrasive or high-pH cleaning agents. Always clean from top to bottom and avoid cleaning in extreme temperatures or direct sunlight. For more detailed cleaning and maintenance instructions visit our download section at [www.rockpanel.co.uk/support/resources/](http://www.rockpanel.co.uk/support/resources/).

# Rockpanel Uni

**Detailed  
product  
information**

Within our detailed product information section you can read about the impact resistance, suitable sub frames, fire properties and the specified fixings. Also visit [www.rockpanel.co.uk](http://www.rockpanel.co.uk) for additional information on Rockpanel board material, such as a complete overview of the Rockpanel assortment, guidelines for processing and installation, specifications text, health and safety and application.

## Impact resistance

Categories	Durable (6 mm)	Test / classification method
Hard body (1 J) without horizontal joint	-	ISO 7892: 1988
Hard body (3 J) without horizontal joint	I	
Hard body (10 J) without horizontal joint	-	
Soft body (10 J) without horizontal joint	III	
Soft body (60 J) without horizontal joint	-	
Application for full boards, for a complete overview and description, please consult the relevant European Technical Assessment.		

## Suitable sub frames

Rockpanel Uni can be attached to the building by fixing to a timber sub frame. The vertical wooden battens should have a minimum thickness of 28 mm.

## Properties in relation to fire

Product	Vertical subframe***	Construction build-up	Fixing method	Classification
Durable (6 mm)	Wooden sub frame	Ventilated with EPDM gasket*	Mechanically fixed	B-s2,d0
	Wooden sub frame	Non-ventilated, cavity filled with mineral wool**	Mechanically fixed	B-s1,d0

\* Gasket/strip 15 mm wider at both sides than the batten.

\*\* Check the pre-conditions for non-ventilated constructions or consult Rockpanel.

\*\*\* For a complete overview and description of the end use situation in which the classification is determined, please consult the relevant European Technical Assessment.

## Fixings specified for use with Rockpanel

	Ring shank nail	Torx screw
Durable 6 mm	+	+
Sub frame	Wooden	Wooden
Thickness sub construction (mm)	≥ 28	≥ 28
Material (body)	Stainless steel (material nr. 1.4401 or 1.4578 according EN 10088)	Stainless steel (material nr. 1.4401 or 1.4578 according EN 10088)
Length (mm)	32 / 40	35
Shank diameter (mm)	2,7 - 2,9	4.3 - 4.6
Head diameter fixing (mm)	5.8 - 6.3	9.6
Hole diameter fixed point (mm)	2.5	3.2
Hole diameter moving point (mm)	3.8	6.0
Hole diameter slotted point (mm)	2.8 x 4.0	3.4 x 6.0

For correct fixing with rivets, use riveting tool with rivet spacer.  
Sub-frame parameters in accordance with paragraph "Suitable sub-frames".

## Fixing distances

Maximum fixing distances (mm)	Durable (6 mm)	
	b max.	a max.
Nail	400	300
Screw	400	300
Rivet	NA	NA
Bonding	NA	NA

## European Technical Assessment (ETA)

ETA-08/0343

Rockpanel Durable 6 mm finish Uni

## Declarations of Performance (DoP)

0764-CPR-0237

## Additional information

This product data sheet clearly specifies the general product properties and is not related to national building regulations. Relevant information about the application of Rockpanel boards related to national building regulations or national guidelines can be found in the Rockpanel instruction guide and on the Rockpanel website. The Rockpanel instruction guide and the website also provide fixing tables related to national annex of the EN 1991-1-4.

Published January 2025.

This publication supersedes and replaces all previous datasheets. Subject to alterations. All data are intended to serve as general information about our products and their possible uses. This publication is an extract of the European Technical Assessment, which is the only legally binding document. ROCKWOOL B.V. / Rockpanel disclaims any liability towards possible (typing) errors and incomplete information in this product data sheet. No rights may be derived from the content of this publication.

[www.rockpanel.co.uk](http://www.rockpanel.co.uk)