



**Brick faced external  
wall cladding**



**V-Clad is a brick faced external wall insulation (EWI) system suitable for modular, new build and retrofit projects.**

## Benefits

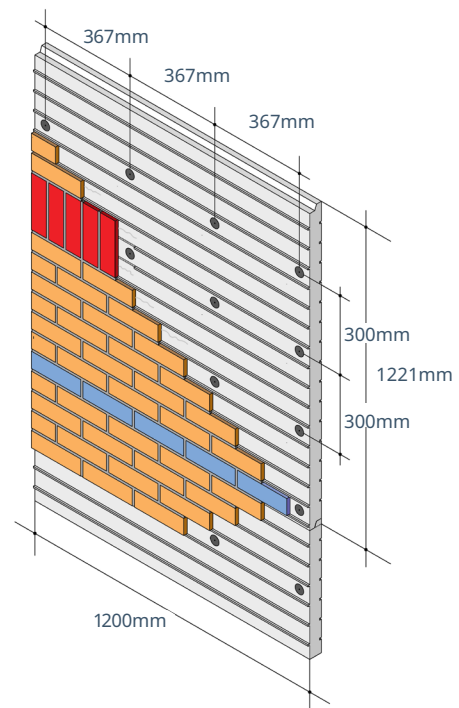
- V-Clad is ideal for renovation to existing masonry and concrete substrates, it is lightweight, easy to handle and fast to fix while minimising disruption of existing foundations, services and building occupants.
- V-Clad can also be installed in new build projects saving time, costs and weight in structure and foundations.
- Indistinguishable from traditionally constructed brickwork, durable and extremely low maintenance.
- Transforms not only the external appearance of the property but internal comfort conditions too. The building is warmer and drier as V-Clad can help to eliminate damp and condensation problems.
- Insulates: saving energy, reducing heating bills and carbon emissions.

## Technical information

- The backer panel is formed by profile cutting expanded polystyrene (EPS) to produce a pattern of horizontal ribs projecting from the front face of the panel. The horizontal ribs align and support the brick slips so that brick courses are formed accurately and easily.
- The insulated backer panel of V-Clad is expanded polystyrene with a BRE Green Guide Rating of A+. Panel size is 1221mm high x 1200mm wide x 20mm thick. (N.B panel up to 100mm thick can be supplied for large orders). The thermal conductivity of the panel, the K-Value is 0.035W/mK.
- Project specific U-Value calculations can be provided if required.
- We have a wide range of kiln fired clay brick slips and pistol corners available. These include both cut slips (Classic Range) and extruded slips (Britannia Range), please refer to our Product Guide for more information. All are FL Grade and suitable for most applications. Extruded brick slips use approximately 60-70% less energy to manufacture than traditional sized bricks, produce far less waste and can be transported more efficiently. Slips can be cut from other bricks to suit project requirements if the standard selection is not suitable.
- Pointing mortar is available in eight standard colours to complement or contrast with the chosen brick.

## Installation

V-Clad can be fixed to masonry, concrete, sheathed framed structures, SIPS and ICF, with or without a drainable cavity.



Please note, that V-Clad must be installed in accordance with the Installation Instructions.



For technical queries or further advice on ordering please call  
**+44 (0)117 971 7117**



For more information please visit our website at  
**[www.eurobrick.co.uk](http://www.eurobrick.co.uk)**

© 2024 Eurobrick Systems Limited. All rights reserved.

