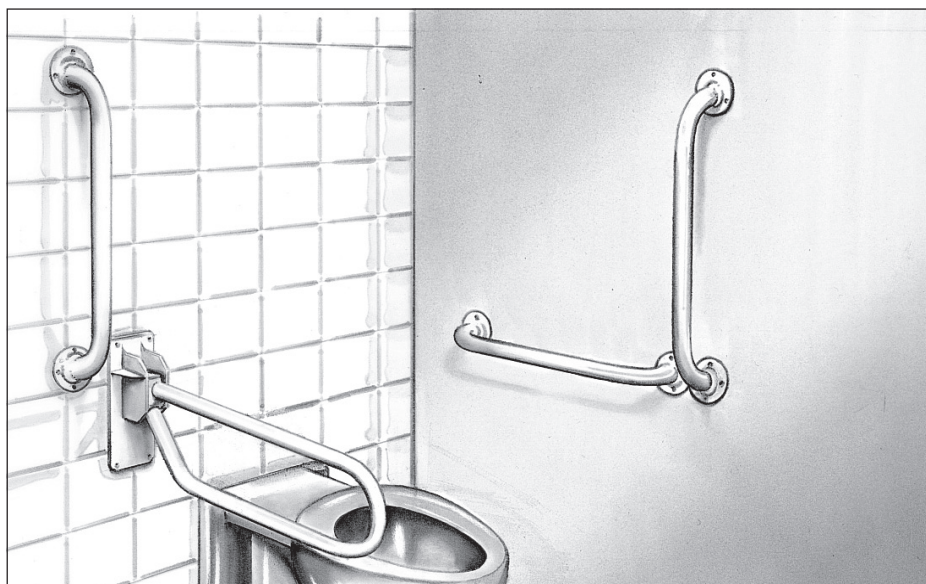


### Description

Designed to meet the requirements of Part M to Section 1 of the Building Regulations, grab rails are for installation in disabled toilet accommodation in offices, shops, factories, educational establishments or any premises to which the public has access. The standard set comprises of an 800 mm long hinged arm support and three 600 x 35 mm diameter rails finished in a white plastic coating. As an alternative to the white plastic coating, polished stainless steel grab rails can be supplied. If grab rails are not being used in conjunction with Acorn Powell Limited's close coupled suite (see catalogue section 2-product code 091) then the set including a 400 x 35 mm grab rail with padded cushion should be specified.



### Product Code Selection for Order or Quotation

#### 1. Base Product Code

- ☐ 741-grab rail set without cushion/grab rail
- ☐ 742-grab rail set with cushion/grab rail

#### 2. Finish

- ☐ WP- white plastic coated
- ☐ SS- polished stainless steel (grab rails only)