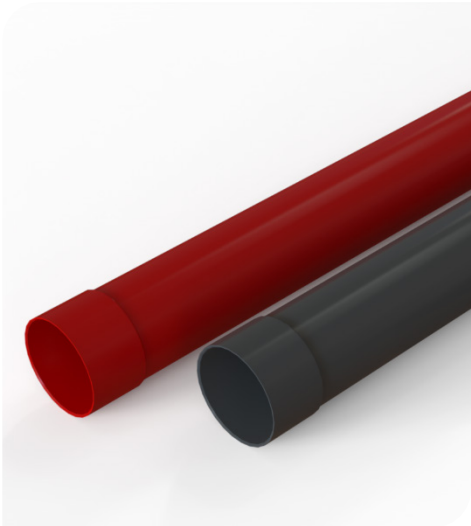


November 2024

uPVC Power Cable Duct – Class 2



uPVC Power Cable duct is a single wall pipe manufactured under ISO 9001:2015, compliant with ENA TS 12-24 for Class 2 standard. uPVC Power Cable duct is produced with inbuilt push-fit sockets in tested to IP4X in accordance with BS EN 6052.

Material	Unplasticized Polyvinyl Chloride (uPVC)
Colour	Available in Black and Red.
Marking	ELECTRIC CABLE DUCT C2 NAYLOR SIZE dd-mm-yy HH:MM LINE
Quality System & Inspection	All quality systems and inspection procedures comply with BS EN ISO 9001: 2015 (Certificate No: FM 01420)
Standards & Certification	MetroDuct uPVC is manufactured in accordance with ENA TS 12-24 and BS EN 61386-24. Complies with manufacturing and test requirements of ENA TS 12-24(Certificate No A3122)
Packaging	Supplied in 3 or 6 metre lengths as standard in timber framed packs (quantity of product per packaged unit is dependent upon the external diameter of the product).
Storage	For long term storage keep away from direct sunlight to avoid product degradation, over 12 months exposure to direct sunlight should be avoided.

OD (mm)	Effective Length (m)	Nominal Wall Thickness (mm)	Min Socket length (mm)	Black RAL 7021	Red RAL 3020	Pack Quantity	Nominal pipe weight (kg/m)
38	3	1.9	40	30071	30070	570	0.36
96.5	6	3.3	90	30098	30099	115	1.43
96.5	3	3.3	90	30091	30090	115	1.43
110	6	3.6	90	30083	30081	90	1.62
110	3	3.6	90	30082	30080	90	1.62
160	6	4.6	110	30266	30265	39	3.3
160	3	4.6	110	30261	30260	39	3.3

All descriptions and illustrations in this publication are intended for guidance only and shall not constitute a ‘sale by description’. All dimensions given are nominal and NAYLOR may modify and change the information, products and specifications from time to time for a variety of reasons, without prior notice. The information in this publication is provided ‘as is’ on February 2024. Updates will not be issued automatically.

This information is not intended to have any legal effect, whether by way of advice, representation or warranty (express or implied). We accept no liability whatsoever (to the extent permitted by law) if you place any reliance on this publication, you must do so at your own risk. All rights reserved. Copyright in this publication belongs to NAYLOR and all such copyright may not be used, sold, copied or reproduced in whole or part in any manner in any media to any person without prior consent.

Technical Support
Our dedicated technical team is available for guidance and assistance.

For further information, please contact our Support Team: help@naylor.co.uk

www.naylor.co.uk



OD (mm)	Angle (°)	Radius (m)	Black	Red	Pack Qty
38	11.25	0.4	36305	36301	50
38	22.5	0.4	36306	36302	50
38	45	0.4	36307	36303	50
38	90	0.4	36308	36304	50
96.5	11.25	3.8	36605	36601	10
96.5	22.5	2.585	36606	36602	10
96.5	45	0.35	36607	36603	15
96.5	90	0.427	36608	36604	10
110	11.25	1.2	36114	36110	10
110	22.5	1.2	36115	36111	50
110	45	1.2	36116	36112	50
110	90	1.2	36117	36113	50
160	11.25	1.2	36175	36171	30
160	22.5	1.2	36176	36172	30
160	45	1.2	36177	36173	30
160	90	1.2	36178	36174	25

COUPLERS			
ID (mm)	Length (mm)	Black	Red
38	100	36300	36311
96.5	200	-	-
110	200	36100	36109
160	300	36700	36701

END CAPS (PE)			
ID (mm)	Length (mm)	Colour	Code
38	35	Yellow	36330
96.5	40	Red	36630
110	40	Yellow	36230
160	30	Yellow	36170

All descriptions and illustrations in this publication are intended for guidance only and shall not constitute a 'sale by description'. All dimensions given are nominal and NAYLOR may modify and change the information, products and specifications from time to time for a variety of reasons, without prior notice. The information in this publication is provided 'as is' on February 2024. Updates will not be issued automatically.

This information is not intended to have any legal effect, whether by way of advice, representation or warranty (express or implied). We accept no liability whatsoever (to the extent permitted by law) if you place any reliance on this publication, you must do so at your own risk. All rights reserved. Copyright in this publication belongs to NAYLOR and all such copyright may not be used, sold, copied or reproduced in whole or part in any manner in any media to any person without prior consent.

Technical Support

Our dedicated technical team is available for guidance and assistance.

For further information, please contact our Support Team: help@naylor.co.uk

www.naylor.co.uk

