

HIGH PRESSURE SLIM-LINE COUPLINGS ENSIGN SOIL & DRAIN EC002HP-S

DESCRIPTION

The High Pressure Slim-line stainless steel coupling has a number of advantages compared to similar couplings. It has two specific parts making the coupling unique:

A patented seal that eliminates the risk of leakage and a special shaped anchoring grip ring, which ensures a reliable, restraint connection.

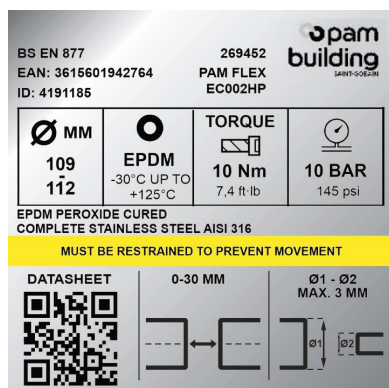
RECOMMENDED USE

- Pressured System Use
- Wastewater
- Rainwater
- Runoff water
- Hot effluents

STANDARDS & APPROVALS

- Industry Product Standard: BS EN 877
- Industry Product Standard: EN 681-1
- Range fire classification: A1

IDENTIFICATION LABEL



MATERIALS

- Steel Casing: 1.4571/316 Ti
- Steel Bars: 1.4571/316 Ti
- Bolts: A4-80/316 Ti
- Anchoring Rings (Grip): 1.4310/301
- Gasket: Peroxide Cured EPDM Rubber EN681-1

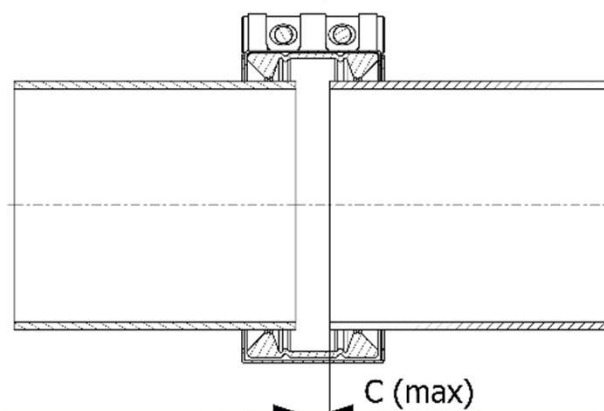
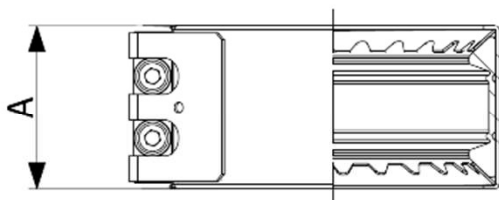
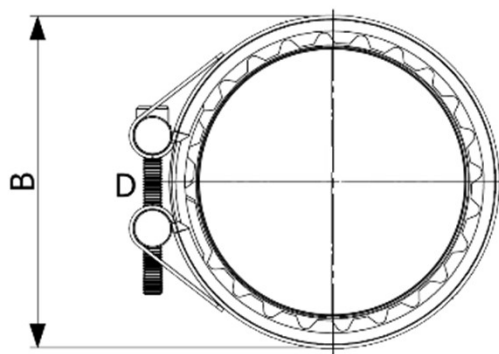
TECHNICAL FEATURES

- Hot water resistance: 24hr @ 95°C
- Thermal cycle resistance: 1500 cycles between -30°C and +125°C
- Chemical resistance for 2>ph>12
- Salt spray resistance internal coating: more than 350hrs.
- PN10 Pressure Rated.

ENVIRONMENTAL DATA

- Recycling information: This product is 100% recyclable through the existing recycling industrial network.

HIGH PRESSURE COUPLINGS SLIM-LINE - GRIP ENSIGN SOIL & DRAIN EC002HP-SG

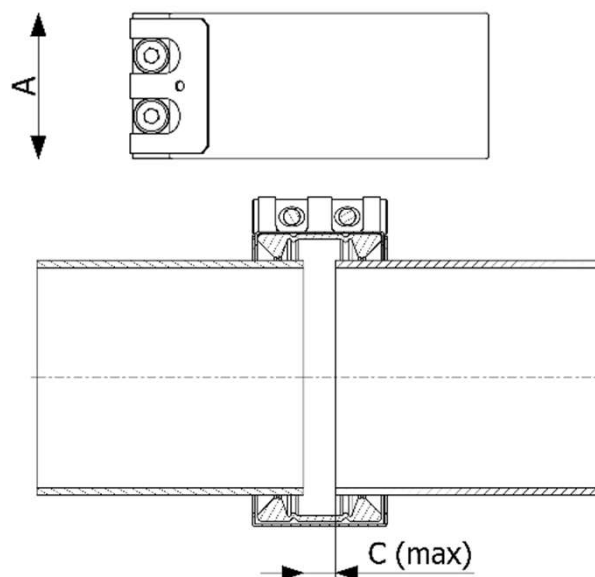
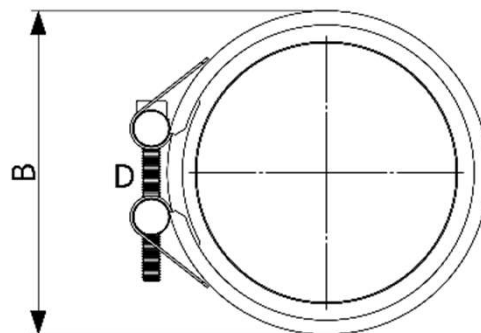


DN	A	B	C	D	TORQUE (Nm)	PRESSURE RATING	WEIGHT	Product Code
100	71	138	15	M8	25	10	0.7	EC002HP-SG-100
150	71	181	15	M8	40	10	0.8	EC002HP-SG-150
200	102	239	30	M10	40	10	1	EC002HP-SG-200
250	102	239	30	M10	65	10	1.1	EC002HP-SG-250

- Working pressure for industrial and land-based applications have a 1.5x safety factor (bars).
- Pressure rating is based on pipe being restrained (Anchored)
- Weight is measured in Kg
- Pressure Rating is measured in Bar
- Torque Rate is measured in Nm

This document is provided for information purposes and our company reserves the right to modify the information contained herein at any time. Our company declines all responsibility of materials that do not comply with the rules prescribed in this document as well with the standards, the technical documents and the applicable professional standards. Any orders placed will be subject to our General Terms and Conditions of Sale, available on request. The drawings and/or images are the exclusive property of PAM Building and are confidential. They must not be reproduced or disclosed to any third party without written consent. They may only be used for the purpose for which they were issued and are returnable on request.

HIGH PRESSURE COUPLINGS SLIM-LINE - FLEX ENSIGN SOIL & DRAIN EC002HP-SF



DN	A	B	C	D	TORQUE (Nm)	PRESSURE RATING	WEIGHT	Product Code
100	63	137	15	M8	25	10	0.7	281605
150	63	180	15	M8	25	10	0.8	281606
200	100	237	30	M10	25	10	1	EC002HP-SF-200

- Working pressure for industrial and land-based applications have a 1.5x safety factor (bars).
- Pressure rating is based on pipe being restrained (Anchored)
- Weight is measured in Kg
- Pressure Rating is measured in Bar
- Torque Rate is measured in Nm

This document is provided for information purposes and our company reserves the right to modify the information contained herein at any time. Our company declines all responsibility of materials that do not comply with the rules prescribed in this document as well with the standards, the technical documents and the applicable professional standards. Any orders placed will be subject to our General Terms and Conditions of Sale, available on request. The drawings and/or images are the exclusive property of PAM Building and are confidential. They must not be reproduced or disclosed to any third party without written consent. They may only be used for the purpose for which they were issued and are returnable on request.