

PRICE LIST

January 2025

Cast iron above & below
ground drainage systems

Pam Building specialises in the manufacture of cast iron above and below ground drainage systems, for commercial, public and residential buildings.



We lead markets in the supply of:

Cast iron soil and rainwater systems, and suspended pipework in basements and car parks and buried under building drainage. Innovative products and processes. Specialist engineering services and total technical support.

Innovation

With Pam Building, you can be assured of quality, innovation and technical expertise at all times.

Technical Support

A UK-based business, with a foundry and distribution centre in the Midlands. We offer unrivalled technical support through our technical department, including customised solutions, who are on hand to answer any questions or queries you may have from design through to installation.

Expertise in Global Service

Pam Building is an international company, which employs around 360 people with sales in more than 50 countries. Our focus is to build on our 150 years of experience in the manufacture of cast iron products, a noble and durable material. Across our site in Telford, we have over 130 people who are experts in their area's and with a long-standing history in ironwork dating back to 1757, our site has become a renowned centre of excellence for cast iron drainage, with a wealth of expertise and knowledge.

Sustainability

We continually invest time, energy and expertise to create an extensive range of innovative solutions which are easy to install, simple to join and simply offer better value for money in terms of total life costs.

Quality Assurance

All parts of our operation have audited quality management systems and fully satisfy BS EN ISO 9001:2015. The majority of products are third-party assessed and approved against all relevant worldwide regulations and standards.

Contents

01 Ensign Agilium®

→ Above Ground Drainage

02 Ensign

→ Above & Below Ground Drainage

03 Ensign

→ Pre-Assembly

04 Timesaver

→ Below Ground Drainage

05 Timesaver

→ Above Ground Drainage

06 Timesaver

→ Heritage Drainage

07 Vortx

→ Roof, Floor and Shower Drains



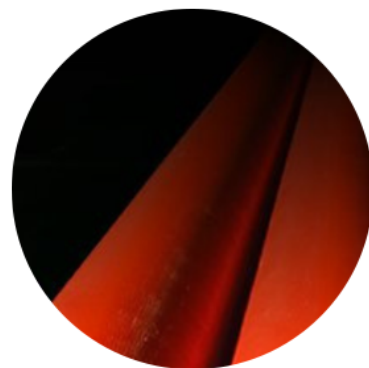
CLICK THE LINKS OR SCAN THE QR CODES

Anywhere you see the click icon, you will be able to click the text and go straight to the section/page mentioned in the text. Also all contact details and QR Codes throughout the document are hyperlinked for your convenience.

Ensign Agilium®



New cast iron drainage solution,
30%* lighter for easier and faster installation
20% lower CO2e** reducing environmental impact



LESS CO2e, LIGHTER AND MORE SUSTAINABLE

Pam Building has launched Ensign Agilium®, a new, more sustainable solution that helps reduce our environmental impact while facilitating ease of installation. These innovative products are part of our continued sustainable approach and are 100% compatible with existing ranges while maintaining the high standards that you would expect from a Pam Building product.

Environment

Ensign Agilium® cast iron is made of 99 % recycled material and is 100% recyclable. Innovations in product design and manufacturing have reduced CO2e emissions by 20%**.

Durability

Due to their exceptional mechanical properties, cast iron drainage systems prevent the need for costly and time-consuming repairs.

Fire safety

Ensign Agilium® cast iron is a non combustible, A1 rated material that is fire resistant for up to 2 hours protecting people and property.

Acoustic comfort

Our cast iron systems easily meet the industry guidelines. Ensign Agilium® produces airborne noise of 46 dB(A) and structure-borne noise of 13 dB(A) according to EN14366, for a discharge rate of 2 l/s (with the use of our anti-vibration collars and acoustic dampeners).

Total cost of installation

Due to having thinner pipe walls, you could save up to 58% of your time cutting pipe with Ensign Agilium®.

**THIS NEW RANGE EMBODIES OUR
MOTTO – SAFE AND FOREVER
CIRCULAR**



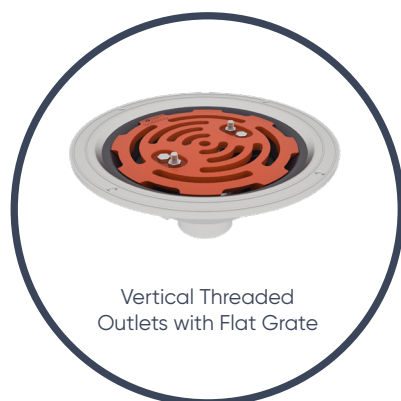
Please **CLICK**
or scan the **QR CODE**
TO SEE MORE ON
OUR WEBSITE

* 30% is the average pipe weight reduction compared to the standard Ensign Soil range.
** 20% is the reduction of CO2e in the production stage, compared to the standard range (according to the respective EPDs).



Vortx Aluminium Roof Outlets

Our new aluminium roof outlets have multiple advantages for everyone involved with a project.



Accessories



Extension Rings & Threaded Adaptors



Please **CLICK HERE** or scan the QR CODE TO SEE MORE ON OUR WEBSITE

Customer Service

Your 1st Choice through the actions of our people

- Passionate about customer satisfaction
- Enterprising in support of our customers' aims
- Trustworthy by keeping our promises

Website

www.pambuilding.co.uk

Technical Sales

Telephone: 01952 262529

Email: technical.pambuilding@saint-gobain.com

Customer Service

Telephone: 01952 262508

Email: orders.pambuilding@saint-gobain.com



Our People

Helpful, responsive, friendly personal contact. Professional and enterprising in helping you



Complaints

We usually get things right. If we don't, let us know and we will put it right



Feedback

We will ask you how you think we are performing and commit to improving



Delivery

On time, in full, error free –but if we can't, we'll let you know and offer a solution

Delivery Service Category (DSC) timescales

Pam Building provide a product availability structure for all its products to enable contractors and distributors to plan supply more effectively on projects.

The products are categorised as follows and are shown against each product in the price list tables.

Category	Description	Within Working Days
A	Products manufactured for ex-stock availability. Any out-of-stock situation should be quickly resolved.	5
B	Products manufactured and a stock level will be held based on average demand.	5-15
C	Products generally of lower demand—some stock may be held or made to order.	15-30

Look for the DSC key at the top of the pages:

A =5 **B** =5-15 **C** =15-30

If there is a product you require faster than the time-scale above please call our sales team on [01952 262508](tel:01952262508)

Technical Service

Do you want your projects to be more productive and benefit from the latest products and services, to reduce time-on-site, costs and the number of components used?

Our Technical Team is here to help you get the best from our products and services to ensure you deliver your project in an optimum way when it comes to the environment, site efficiency and the total cost of installation. Not only can our Technical team help you with any questions you might have about our products or services but we offer a full take-off quotation service.

We offer technical training services that can be conducted either at our Telford training room or at your site for your convenience. Our manufacturing facility is a source of pride for us, and we would be pleased to arrange a foundry tour for you, should you choose to visit us;
please click or scan the QR code to the right for a link to animation about our foundry.

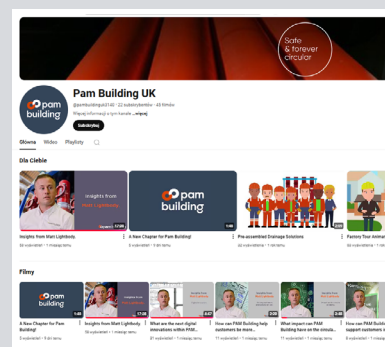
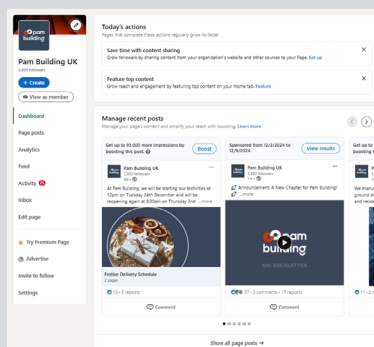
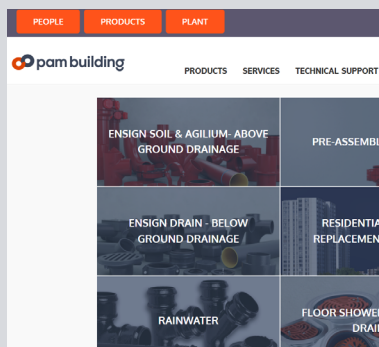


More training is also available with our CPD training presentations which can be delivered either in person or online. Please visit our training page to review what is available and contact your sales manager or our technical team for further information.

Technical Enquiries: 01952 262529 Email: technical.pambuilding@saint-gobain.com



Our media locations will also keep you up to date with the latest information so please click or scan the QR codes below to visit them, then follow us or bookmark our pages:



LinkedIn



YouTube



ENSIGN AGILIUM®

LESS CO₂e,
LIGHTER
AND MORE
SUSTAINABLE



Pam Building has launched Ensign Agilium®, a new, more sustainable solution that helps reduce our environmental impact while facilitating ease of installation.

100% compatible with our Ensign Soil range.

NEW

ENSIGN AGILIUM[®]

Our Ensign Agilium[®] range is the first choice for commercial, public and residential buildings; particularly multi-storey buildings which require robust and safe solutions.

The key features and benefits of Ensign Agilium[®]:

Fire Performance

- Fire resistance tests have been carried out, by Efectis, on both wall and floor slab penetrations and in most circumstances no additional protection is required to achieve Approved Document B EI ratings.
- Ensign Agilium[®] cast iron is a non-combustible metallic material with a melting point higher than 1,000°C.

Durability

- Due to their exceptional mechanical properties, cast iron drainage systems prevent the need for costly and time-consuming repairs.

Weight

- 30% lighter to carry for easier and faster installation.
- The thinner walled pipes are now much quicker to cut, don't believe us, watch our time trial! (Scan QR Code below).

Sustainability

- Innovations in product design and manufacturing have reduced CO2e emissions by 20%**.
- Ensign Agilium[®] cast iron is made of 99 % recycled material.
- Always 100% recyclable.
- Can be recycled infinitely into grade 1 products.
- Long product life of 70 years for sanitary soil and rainwater systems

Please
CLICK OR SCAN THE QR CODE
to see our time trial video on
YouTube



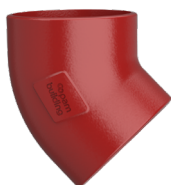
* 30% is the average pipe weight reduction, compared to the standard Ensign Soil range.
** 20% is the reduction of CO2e in the production stage, compared to the standard range (according to the respective EPDs).

01. Ensign Drainage Solutions

PIPES



RADIUS BENDS



BRANCHES



SIZE Ø mm	PACK SIZE	NOMINAL WEIGHT KG	ABOVE GROUND ▲			BELOW GROUND ▼		
			ΔDSC.	PRODUCT CODE	UNIT PRICE £	ΔDSC.	PRODUCT CODE	UNIT PRICE £

Agilium 3M Pipe

AP000

100	38	16.8	A	283723	153.10	—	—	—
125	23	23.8	C	283724	245.62	—	—	—
150	20	30.5	A	283725	303.31	—	—	—
200	10	46.8	B	283726	506.85	—	—	—
250	8	69.6	B	283727	708.12	—	—	—
300	6	90.6	C	283728	881.87	—	—	—

Agilium 45° Short Radius Bends

AF002

100	1	1.15	A	282809	37.31	—	—	—
125	1	2.04	C	283032	54.96	—	—	—
150	1	3.01	A	286809	67.02	—	—	—
200	1	5.38	A	286821	199.50	—	—	—

Agilium 88° Short Radius Bends

AF002

100	1	1.79	A	283022	37.31	—	—	—
125	1	2.84	C	286824	54.96	—	—	—
150	1	4.33	A	286823	67.02	—	—	—

Agilium 45° Single Branches (Equal And Unequal)

AF006

100x100	1	3.28	A	282807	60.43	—	—	—
125x100	1	4.25	C	283033	121.21	—	—	—
125x125	1	5.3	C	283034	130.44	—	—	—
150x100	1	5.72	B	286814	141.88	—	—	—
150x125	1	6.71	C	286813	174.83	—	—	—
150x150	1	8.2	B	286810	144.58	—	—	—
200x100	1	7.21	A	286817	364.00	—	—	—
200x150	1	9.9	B	286819	374.39	—	—	—
200x200	1	13.06	C	286820	405.41	—	—	—

Agilium 88° Single Tee Branches (Equal And Unequal)

AF006

100x100	1	2.46	A	282810	60.43	—	—	—
125x125	1	3.36	C	286811	130.44	—	—	—
150x150	1	5.12	A	286812	144.58	—	—	—



SIZE Ø mm	PACK SIZE	NOMINAL WEIGHT KG	ABOVE GROUND ▲			BELOW GROUND ▼		
			^A DSC.	PRODUCT CODE	UNIT PRICE £	^A DSC.	PRODUCT CODE	UNIT PRICE £

Agilium 88° Single Radius Branches (equal and unequal)

AF06R

100x100	1	3.18	A	289451	69.04	—	—	—
---------	---	------	---	--------	-------	---	---	---

Agilium 45° Double Branches (equal and unequal)

AF010

100x100x100	1	4.14	B	283024	90.20	—	—	—
-------------	---	------	---	--------	-------	---	---	---

Agilium 88° Double Radius Branches (equal and unequal)

AF010R

100x100x100	1	4.14	B	289479	88.23	—	—	—
150x150x150	1	9.44	B	293095	388.69	—	—	—

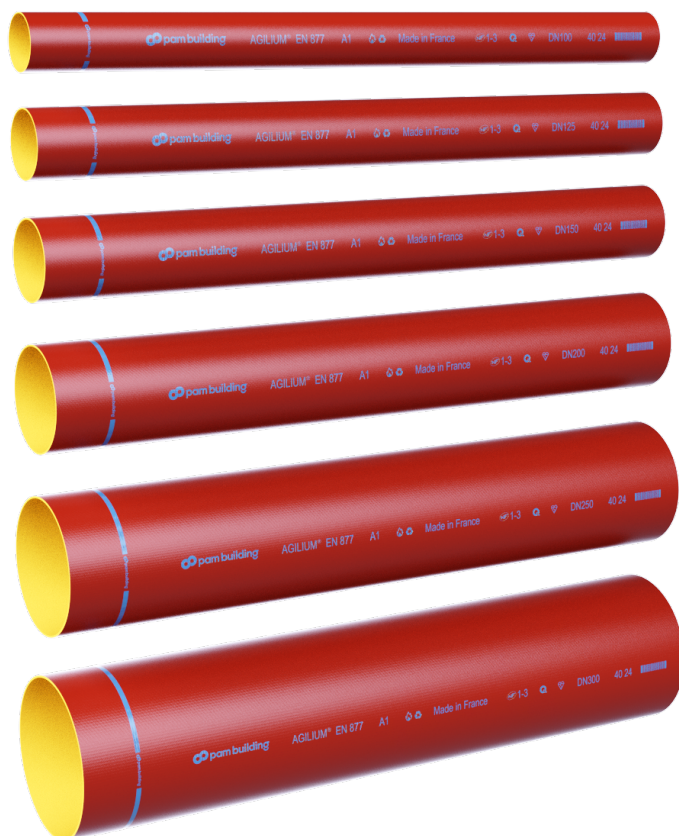
Please note, due to the sustainable advantages of our new Ensign Agilium® range, we will be slowly phasing out our standard Ensign Soil products.

This means you may see both ranges in your order as we go through this transition, but don't worry, Ensign Agilium® is completely compatible with our standard Ensign Soil range (and vice versa) so this will not affect the quality or integrity of your system.

Ensign Agilium® also has all the benefits of our standard Ensign Soil range in terms of fire safety, acoustic performance, and longevity, just with more time and space-saving qualities.



To **LEARN MORE** please **CLICK HERE OR SCAN THE QR CODE**



^ADelivery Service Category DSC (see page 6)

Ⓐ =5 DAYS Ⓑ =5-15 DAYS Ⓒ =15-30 DAYS



ENSIGN DRAINAGE SOLUTIONS

Our Ensign Drainage range provides specifiers, contractors, owners and building users with total peace of mind thanks to its unbeatable performance.

At the heart of our offer is our material, cast iron, which delivers a fantastic performance in many areas: sustainability, fire resistance, acoustics, robustness and service life. Our above and below ground drainage systems offer a wide range of dimensions and fittings to meet all your project needs. We also offer a range of products and services that reduce the number of components required on a project which in turn reduces the time required to install the system.



Our Ensign range is the first choice for commercial, public and residential buildings; particularly multi-storey buildings which require robust and safe solutions.

Our above-ground system is used for:

- Sanitary soil drainage
- Rainwater systems

The key features and benefits of our Ensign above-ground system are:

Fire Performance

- A1 fire rated under BS EN 13501-1:2018, giving you the highest level of fire protection
- Non-combustible, so will not fuel a fire
- Will not create molten droplets which can spread a fire down through a building
- Suitable to use on the façade of high-rise residential buildings over 18m high, as per the recently amended building regulations

Sustainability

- Manufactured from 99% recycled materials
- Always 100% recyclable
- Can be recycled infinitely into grade 1 products
- Long product life of 70 years for sanitary soil and rainwater systems

Acoustics

- An inherently quiet system without the need for other acoustic products to meet the performance requirements of acoustically sensitive rooms
- Other materials might need other products such as lagging to reduce the acoustic impact, which costs more in materials, installation time, space and environmental impact.
- Outperforms acoustic plastic systems by up to 12dB(A) based on structure-borne tests at 2L/s with our acoustic damper system
- Acoustic dampeners can be fitted for the ultimate acoustic performance
- Simple installation
- The expansion co-efficient is virtually the same as concrete so there is no need for expansion joints like those required for HDPE systems
- Less bracketry is required which will reduce installation cost and time
- A wide range of couplings to help with both speed of installation and high-pressure situations

High Performance

- High-quality pipes manufactured by Pam Building in France using the De Lavaud process gives:
- A greater impact and crush resistance than other processes and materials, making it most suitable for exposed situations
- Gives a reduced surface hardness that makes it much easier to cut on-site
- High performing mechanical joint solutions that can perform from 0.5 bar to more than 10 bar
- Adjustments and changes to the system can be done with ease after the system has been installed
- Manufactured to BS EN 877:1999+A1:2006
- Fire tested to BS EN 13501-1:2018 achieving an A1 fire rating

Wide Range

- 50–600mm diameter range
- A wide range of swept branches in compliance with BS EN 12056-2:2000 and Public Health best practice
- A wide range of waste connection fittings from 1 to 6 boss connections
- Strong robust ductile iron brackets
- Installation time and space-saving products such as the new Venting Branch system and the rodding branch (see page 4 & 5)
- Pre-Assembly Service will save up to 60% of the installation time on site
- Full range of BIM objects and an easy system to design with





CLICK or SCAN THE QR CODE to
WATCH THE FIRE TEST VIDEO

01. Ensign Drainage Solutions

PIPES



RAL 3002



RAL 7015

For 100mm–300mm diameters, please see AP000 Ensign Agilium pipes on [page 10](#).

BRACKETS



Threaded bars size is M10 for 50 to 100mm and M12 for 150 & 200mm



SIZE Ø mm	PACK SIZE	NOMINAL WEIGHT KG	ABOVE GROUND ▲			BELOW GROUND ▼		
			ΔDSC.	PRODUCT CODE	UNIT PRICE £	ΔDSC.	PRODUCT CODE	UNIT PRICE £

3m Pipe

			EP000			ED000		
50	37	12.5	A	156363	111.21	—	—	—
70	41	17.0	A	156455	128.66	—	—	—
100	38	24.5	—	—	—	A	155349	199.85
150	20	41.0	—	—	—	A	155414	398.20
200	10	67.4	—	—	—	B	155448	673.15
250	8	97.3	—	—	—	B	155476	989.58
300	6	126.8	—	—	—	B	155493	1,232.46
400	2	177.7	C	157171	1,731.92	C	155508	1,996.72
500	1	244.9	C	157187	2,153.90	C	155511	2,318.50
600	1	321.9	C	157203	2,626.21	C	175630	2,849.98

Ductile Iron Pipe Brackets

			EF048			ED048		
50	48	0.3	A	156408	14.63	—	—	—
70	30	0.5	A	156505	14.63	—	—	—
100	30	0.6	A	156646	16.90	B	175593	19.57
150	16	0.8	A	156898	31.31	B	175594	37.07
200	8	1.5	B	177745	116.07	C	177743	141.26

Ductile Iron Pipe Bracket Fitted with Acoustic Dampener – Tested to BS EN 14366:2004

			EF048AD					
50	48	0.5	B	199881	28.43	—	—	—
70	30	0.6	B	199882	28.43	—	—	—
100	30	0.7	A	199883	30.35	—	—	—
150	16	1.0	B	199884	37.92	—	—	—

Acoustic dampener only (pack of 10)

—	—	—	—	—	—	255610	161.41
---	---	---	---	---	---	--------	--------

Ductile Iron Pipe Bracket (Double Braced)

			EF049					
100	1	0.8	B	177744	18.49	—	—	—



SIZE Ø mm	PACK SIZE	NOMINAL WEIGHT KG	ABOVE GROUND ▲			BELOW GROUND ▼		
			^A DSC.	PRODUCT CODE	UNIT PRICE £	^A DSC.	PRODUCT CODE	UNIT PRICE £

Vertical Mild Steel Bracket

EF048MS

125	1	1.1	B	192259	29.48	—	—	—
-----	---	-----	---	--------	-------	---	---	---

Split Band Mild Steel Brackets

EF048MBS

200	1	1.27	C	285737	46.59	—	—	—
250	1	1.72	C	285738	64.20	—	—	—
300	1	1.86	C	285739	70.74	—	—	—
400	1	2.3	C	261761	89.46	—	—	—
500	1	2.9	C	261762	128.04	—	—	—

Fixing bolts not included



Rubber Lined Mild Steel Brackets

EF048MSL

50	50	0.1	B	251197	7.81	—	—	—
70/75	50	0.2	B	251198	11.91	—	—	—
100	25	0.3	B	251199	14.25	—	—	—
150	20	0.4	B	251201	20.81	—	—	—
200	10	0.6	C	251202	36.85	—	—	—
250	10	1.6	C	251203	60.95	—	—	—
300	10	1.8	C	251204	121.61	—	—	—



^ADelivery Service Category DSC (see page 6)

Ⓐ =5 DAYS Ⓑ =5-15 DAYS Ⓒ =15-30 DAYS

01. Ensign Drainage Solutions



Nitrile Gaskets available on request



All couplings from 150mm diameter and above has four bolts.

- 300mm diameter comes in four parts
- any diameters larger than 300mm, please refer to the high pressure couplings



SIZE Ø mm	PACK SIZE	NOMINAL WEIGHT KG	ABOVE GROUND ▲			BELOW GROUND ▼		
			ΔDSC.	PRODUCT CODE	UNIT PRICE £	ΔDSC.	PRODUCT CODE	UNIT PRICE £

Stainless Steel couplings Rapid NG (EPDM Rubber Gasket)

EC002NG

50	100	0.2	A	210424	16.19	—	—	—
70	140	0.3	A	210425	17.85	—	—	—
100	100	0.5	A	210427	23.20	—	—	—
125	50	0.6	C	210428	28.79	—	—	—
150	50	0.7	A	210429	46.49	—	—	—
200	20	0.8	B	210430	103.94	—	—	—
250	4	0.9	B	228759	148.83	—	—	—
300	4	1.0	B	228771	172.26	—	—	—

Two Piece Iron Ductile Couplings (EPDM Gaskets)

EC002

ED001

50	32	0.6	A	156398	16.19	—	—	—
70	27	0.7	A	156493	17.85	—	—	—
100	20	1.1	A	156634	23.20	A	155369	32.74
125	12	0.9	C	156777	28.79	—	—	—
150	8	1.7	A	156888	46.49	A	155433	66.87
200	4	3.7	A	156998	103.94	A	155462	148.98
250	1	4.4	B	175552	148.83	B	175591	189.68
300	1	6.5	B	175510	172.26	B	175592	217.28

EEZI-FIT Couplings

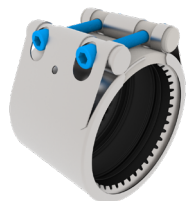
EZ001

100	12	1.3	A	208191	25.28	—	—	—
150	1	2	C	216312	50.55	—	—	—

Push-fit Drain Couplings

ED004

100	1	1.5	—	—	—	A	175622	35.84
150	1	2.5	—	—	—	A	175623	70.38



All steel components are
Grade 316 EPDM gasket
Nitrile available on request



All steel components are Grade 316 EPDM
gasket Nitrile available on request

Note – Coupling requires restraining to
perform to higher pressures

Please note for removal and re-installation
of the bolts for the HP couplings will require
MolyKote (code 278599) applied to the
threads. Please call the technical team for
details on **01952 262529**.



These are slip couplings and to be used
when space between some fittings is tight.
For Agilium pipe and fittings. Please see the
datasheet for further details.



SIZE Ø mm	PACK SIZE	NOMINAL WEIGHT KG	ABOVE GROUND ▲			BELOW GROUND ▼		
			ΔDSC.	PRODUCT CODE	UNIT PRICE £	ΔDSC.	PRODUCT CODE	UNIT PRICE £

Pam-GRIP Stainless Steel High Performance Coupling with Grip (EPDM Gaskets)

EC002HP-G						EC002HP-G		
50	1	0.6	B	269439	106.86	B	269439	106.86
70	1	1.0	B	269440	113.02	B	269440	113.02
100	1	1.1	B	269441	139.68	B	269441	139.68
150	1	2.3	B	269442	202.84	B	269442	202.84
200	1	5.6	B	269443	341.26	B	269443	341.26
250	1	6.5	B	269444	492.38	B	269444	492.38
300	1	7.2	B	269445	503.56	B	269445	503.56
400	1	10.3	B	269446	605.26	B	269446	605.26
500	1	16.9	C	269447	749.31	C	269447	749.31
600	1	19.6	C	269448	885.65	C	269448	885.65

Pam-FLEX High Performance Coupling Non-Grip (EPDM Gaskets)

EC002HP						EC002HP		
50	1	0.6	B	269450	80.75	B	269450	80.75
70	1	1.0	B	269451	84.49	B	269451	84.49
100	1	1.1	B	269452	95.39	B	269452	95.39
150	1	2.3	B	269453	133.23	B	269453	133.23
200	1	4.1	B	269454	144.77	B	269454	144.77
250	1	4.6	B	269455	167.72	B	269455	167.72
300	1	5	B	269456	182.38	B	269456	182.38
400	1	5.8	B	269457	272.55	B	269457	272.55
500	1	6.6	C	269458	309.86	C	269458	309.86
600	1	7.4	C	269459	343.32	C	269459	343.32

Pam-FLEX High Performance Coupling Non-Grip (EPDM Gaskets) – SLIM

EC002HP-S						EC002HP-S		
100 slim	1	1.02	B	281605	95.39	B	281605	95.39
150 slim	1	2	B	281606	133.23	B	281606	133.23
200 slim	1	3.5	B	286435	144.77	B	286435	144.77

Pam-FLEX High Performance Coupling With Grip (EPDM Gaskets) – SLIM

EC002HP-SG						EC002HP-SG		
100 slim	1	1.02	B	286431	137.27	B	286431	137.27
150 slim	1	2	B	286432	198.16	B	286432	198.16
200 slim	1	3.5	B	286433	329.46	B	286433	329.46
250 slim	1	5.38	B	286434	475.56	B	286434	475.56

ΔDelivery Service Category DSC (see page 6)

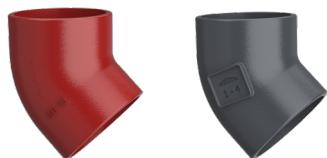
Ⓐ =5 DAYS Ⓑ =5-15 DAYS Ⓒ =15-30 DAYS

01. Ensign Drainage Solutions



* 100mm & 150mm below ground only for rainwater.

For 100mm-150mm diameters, please see AF002 88° on [page 10](#).



For 100mm-200mm diameters, please see AF002 45° on [page 10](#).

SIZE Ø mm	PACK SIZE	NOMINAL WEIGHT KG	ABOVE GROUND ▲			BELOW GROUND ▼		
			ΔDSC.	PRODUCT CODE	UNIT PRICE £	ΔDSC.	PRODUCT CODE	UNIT PRICE £

88° Short Radius Bends

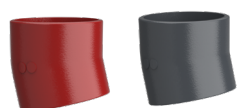
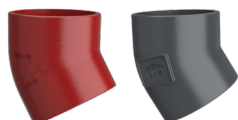
EF002						ED002		
50	1	0.7	A	191437	27.98	—	—	—
70	1	1.3	A	191442	31.50	—	—	—
100	1	1.9	—	—	—	C	271397	41.53
150	1	4.4	—	—	—	C	278339	78.86
200	1	9.8	C	191462	214.12	—	—	—
250	1	17.3	C	191463	389.31	—	—	—
300	1	27.4	C	191431	641.11	—	—	—
400	1	72.7	C	265224	1,018.26	—	—	—

68° Short Radius Bends

EF002								
50	1	0.6	C	191436	27.98	—	—	—
70	1	1.2	C	191441	31.50	—	—	—
100	1	2.1	C	191446	37.31	—	—	—
150	1	4.2	C	191458	67.02	—	—	—
200	1	7.8	C	156968	199.51	—	—	—
250	1	14.7	C	157067	389.31	—	—	—
300	1	20.0	C	157132	547.62	—	—	—

45° Short Radius Bends

EF002						ED002		
50	1	0.6	A	191435	27.98	—	—	—
70	1	0.9	A	191440	31.50	—	—	—
100	1	1.4	—	—	—	A	191765	43.95
150	1	3.0	—	—	—	B	191766	78.86
200	1	6.8	—	—	—	C	191767	229.45
250	1	10.9	B	191464	389.31	C	191879	456.40
300	1	18.7	C	191432	547.62	C	191880	619.39
400	1	35.0	C	192335	1,413.87	C	192370	1,475.35
500	1	53.0	C	192376	2,303.42	C	192382	2,119.16
600	1	92.0	C	192377	2,503.13	C	192383	2,728.88



SIZE Ø mm	PACK SIZE	NOMINAL WEIGHT KG	ABOVE GROUND ▲			BELOW GROUND ▼		
			^A DSC.	PRODUCT CODE	UNIT PRICE £	^A DSC.	PRODUCT CODE	UNIT PRICE £

30° Short Radius Bends

			EF002			ED002		
50	1	0.5	C	191434	27.98	—	—	—
70	1	0.7	C	191439	31.50	—	—	—
100	1	1.5	A	191444	37.31	A	191768	43.95
150	1	3.2	C	191456	67.02	B	191769	78.86
200	1	7.0	C	155933	199.51	C	265382	239.44
250	1	9.7	C	155948	389.31	C	265380	467.17
300	1	15.5	C	155960	547.62	C	265379	711.90
400	1	34.6	C	264752	864.95	C	266308	982.73

15° Short Radius Bends

			EF002			ED002		
50	1	0.4	C	191433	27.98	—	—	—
70	1	0.7	C	191438	31.50	—	—	—
100	1	1.3	A	191443	37.31	A	191770	43.95
150	1	2.5	C	191455	67.02	B	191771	78.86
200	1	4.6	C	155932	199.51	C	265381	239.44
400	1	19.3	C	269726	680.55	C	270324	884.71

45° Medium Radius Bends

						ED02M		
100	1	3.5	—	—	—	B	191772	74.83
150	1	5.9	—	—	—	C	191773	186.22

88° Medium & Long Radius Bends

			EF02L			ED02L		
100 LR	1	4.8	A	191549	94.86	A	191774	102.67
150 MR	1	8.7	B	191550	271.87	B	191775	307.87

^ADelivery Service Category DSC (see page 6)

● A =5 DAYS ● B =5-15 DAYS ● C =15-30 DAYS

01. Ensign Drainage Solutions



SIZE Ø mm	PACK SIZE	NOMINAL WEIGHT KG	ABOVE GROUND ▲			BELOW GROUND ▼		
			ΔDSC.	PRODUCT CODE	UNIT PRICE £	ΔDSC.	PRODUCT CODE	UNIT PRICE £

22° Long Radius Bends

EF02L						ED02L		
100 LR	1	2.0	C	191548	69.94	C	191776	75.37



88° Heel Rest Bends

ED007								
100	1	5.7	—	—	—	B	192289	127.56
150	1	9.9	—	—	—	C	192290	313.79



88° Short Radius Bends with Rear Access

EF005								
70	1	1.8	C	156472	61.11	—	—	—
100	1	3.3	A	156589	89.24	—	—	—
150	1	4.5	B	156845	157.00	—	—	—



88° Long Radius Bend with Rear Access

EF05L						ED05L		
100	1	5.7	B	156607	115.45	C	191777	135.82



88° Medium Radius Bend with Rear Access

EF05M						ED05M		
150	1	10.7	C	192357	280.44	C	192358	313.79



SIZE Ø mm	PACK SIZE	NOMINAL WEIGHT KG	ABOVE GROUND ▲			BELOW GROUND ▼		
			^A DSC.	PRODUCT CODE	UNIT PRICE £	^A DSC.	PRODUCT CODE	UNIT PRICE £

Access Pipes with Round Door

EF014						ED014		
50	1	1.6	B	191516	74.62	—	—	—
70	1	2.0	B	191517	78.95	—	—	—
100	1	3.1	A	191518	86.77	C	191805	97.71
150	1	6.2	B	191519	157.07	C	191806	162.61



Access Pipes with Rectangular Door

EF015						ED015		
100	1	7.2	B	191840	167.78	C	191807	195.01
125	1	9.0	C	191521	174.59	—	—	—
150	1	12.7	B	191841	262.73	C	191808	304.95
200	1	21.5	C	191522	521.82	C	191809	613.82
250	1	38.5	C	191523	821.08	C	191883	994.80
300	1	50.0	C	191520	1,024.25	C	191884	1,187.68

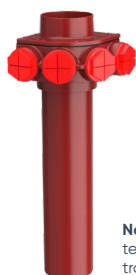


Note – Supplied with temporary plastic caps for transportation purposes only

Multi-Waste Manifold Connector 6 x 50mm With Aluminium sealing plugs

EF095								
100	1	12.8	B	261138	289.17	—	—	—
150	1	17.3	C	261434	369.54	—	—	—

Aluminium metal cap for multi-waste manifold 290611 Price: £17.25



Note – Supplied with temporary plastic caps for transportation purposes only

Corner Multi-Waste Manifold Connector 4 x 50mm With Aluminium sealing plugs

EF099								
100	1	10.4	C	290611	266.11	—	—	—

Manifold Connectors



EF094								
100	1	3.2	C	175626	153.81	—	—	—
150	1	6.0	C	175629	214.28	—	—	—

Plastic Plugs, 10 pack, 191173 – £14.42

^ADelivery Service Category DSC (see page 6)

Ⓐ =5 DAYS Ⓑ =5-15 DAYS Ⓒ =15-30 DAYS

01. Ensign Drainage Solutions



Note: to comply to BS EN 12056 part 2 use a Swept Radius, [see page 26](#).

SIZE Ø mm	PACK SIZE	NOMINAL WEIGHT KG	ABOVE GROUND ▲			BELOW GROUND ▼		
			ΔDSC.	PRODUCT CODE	UNIT PRICE £	ΔDSC.	PRODUCT CODE	UNIT PRICE £
88° Single Tee Branches (equal and unequal)								
EF006								
50x50	1	1.0	B	191469	44.91	—	—	—
70x50	1	1.5	C	191472	47.43	—	—	—
70x70	1	1.7	B	191475	47.43	—	—	—
100x50	1	2.0	B	191479	65.06	—	—	—
100x70	1	2.3	C	191482	65.06	—	—	—
125x100	1	4.0	C	191490	121.21	—	—	—
150x100	1	4.6	B	191497	140.07	—	—	—
150x125	1	5.8	C	191499	161.96	—	—	—
200x200	1	13.3	C	191505	495.15	—	—	—
250x250	1	22.6	C	191508	873.92	—	—	—
300x300	1	35.5	C	191466	1,124.46	—	—	—



69° Single Branches (equal and unequal)								
EF006						ED006		
50x50	1	1.0	C	191468	44.91	—	—	—
70x50	1	1.4	C	191471	47.43	—	—	—
70x70	1	1.7	C	191474	47.43	—	—	—
100x50	1	2.2	C	191478	65.06	—	—	—
100x70	1	2.7	C	191481	65.06	—	—	—
100x100	1	2.7	C	191484	60.43	C	191781	70.98
150x100	1	5.1	C	191496	141.88	C	191851	166.81



For 100x100mm–200x200mm diameters, please see AF006 45° on [page 10](#).

SIZE Ø mm	PACK SIZE	NOMINAL WEIGHT KG	ABOVE GROUND ▲			BELOW GROUND ▼		
			ΔDSC.	PRODUCT CODE	UNIT PRICE £	ΔDSC.	PRODUCT CODE	UNIT PRICE £

45° Single Branches (equal and unequal)

EF006						ED006		
50x50	1	1.3	A	191467	44.91	—	—	—
70x50	1	1.8	C	191470	47.43	—	—	—
70x70	1	2.3	B	191473	47.43	—	—	—
100x50	1	2.4	A	191477	65.06	—	—	—
100x70	1	2.7	B	191480	65.06	—	—	—
100x100	1	3.7	—	—	—	A	191782	70.98
150x100	1	5.7	—	—	—	B	191783	166.81
150x150	1	8.4	—	—	—	C	191784	170.00
200x100	1	9.6	—	—	—	C	191785	428.10
200x150	1	14.2	—	—	—	C	191786	428.10
200x200	1	19.4	—	—	—	C	191787	459.29
† 250x100	1	13.6	C	157073	465.17	C	259817	519.37
† 250x150	1	17.3	C	157075	465.17	C	259816	519.37
† 250x200	1	24.3	C	157078	581.48	C	265383	697.76
250x250	1	32.2	C	191507	871.90	C	191881	1,024.43
† 300x100	1	19.3	C	157138	767.53	C	264870	921.01
† 300x150	1	23.2	C	157140	767.53	C	264869	921.01
† 300x200	1	28.4	C	157141	814.04	—	—	—
† 300x250	1	37.2	C	157142	814.04	—	—	—
300x300	1	54.8	C	191465	1,124.46	C	191882	1,477.64
400x300	1	60.0	C	192339	2,693.44	C	192384	2,538.01
400x400	1	94.7	C	192336	3,196.67	C	192373	2,745.34
† 500x500	1	175.0	C	192378	4,755.75	C	192385	4,397.60
† 600x600	1	215.0	C	192379	4,858.94	C	192386	5,398.85

ΔDelivery Service Category DSC (see page 6)

● A =5 DAYS ● B =5-15 DAYS ● C =15-30 DAYS

01. Ensign Drainage Solutions



For 100x100mm diameter, please see AF06R 88° on [page 10](#).



SIZE Ø mm	PACK SIZE	NOMINAL WEIGHT KG	ABOVE GROUND ▲			BELOW GROUND ▼		
			ΔDSC.	PRODUCT CODE	UNIT PRICE £	ΔDSC.	PRODUCT CODE	UNIT PRICE £

88° Single Branch (Swept Radius) (see BS EN 12056 part 2)

EF06R						ED06R		
70x70	1	2.2	B	156539	57.77	—	—	—
100x50	1	2.4	B	156611	76.05	—	—	—
100x70	1	2.9	C	156612	76.05	—	—	—
100x100	1	3.3	—	—	—	B	191788	78.54
150x100	1	7.6	B	156869	164.47	C	191789	264.80
150x150	1	11.73	C	156926	266.95	C	191790	273.84
200x100	1	9.06	—	—	—	C	291329	313.89
200x150	1	13.0	C	156985	462.91	C	191791	544.48
200x200	1	21.0	C	157025	487.45	C	191792	573.44

88° Single Branch (Swept Radius) with Rear Access (see BS EN 12056 part 2)

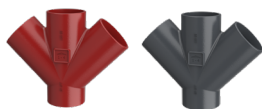
EF07R						ED07R		
70x70	1	3.0	C	156540	84.71	—	—	—
100x50	1	3.2	C	156614	114.89	—	—	—
100x70	1	3.5	C	156621	114.89	—	—	—
100x100	1	4.3	B	156697	119.23	C	191793	135.18
150x100	1	8.9	C	156875	274.23	C	191794	285.30
150x150	1	13.0	C	156927	334.54	C	191795	285.95

88° Double Branches (Swept Radius) (equal and unequal) (see BS EN 12056 part 2)

EF010R						ED010R		
100x100	1	4.2	—	—	—	C	185373	103.73
150x100	1	7.6	C	156862	358.91	C	191803	395.99

88° Corner Branch (Swept Radius) (equal)

EF035R								
100x100	1	4.4	B	264739	158.27	—	—	—



For 100x100mm diameter, please see AF010 45° on [page 10](#).



SIZE Ø mm	PACK SIZE	NOMINAL WEIGHT KG	ABOVE GROUND ▲			BELOW GROUND ▼		
			^A DSC.	PRODUCT CODE	UNIT PRICE £	^A DSC.	PRODUCT CODE	UNIT PRICE £

45° Double Branches (equal and unequal)

EF010						ED010		
100x100	1	4.7	—	—	—	C	191798	102.25
150x100	1	8	C	191512	267.44	C	191799	296.95
150x150	1	12.6	C	191513	359.63	C	191800	401.61
200x200	1	25.3	C	191514	498.42	C	191801	516.67

88° Corner Branches (equal and unequal)

EF035								
150x100	1	7.1	C	155919	184.76	—	—	—

45° Corner Branches

EF035								
100x100	1	5.9	C	156716	158.27	—	—	—

88° Double Branches (equal and unequal)

EF010								
100x50	1	2.2	C	155825	64.03	—	—	—
1100x70	1	2.7	C	155826	76.74	—	—	—
100x100	1	3.3	B	191511	86.93	—	—	—
150x100	1	5.7	C	155907	194.46	—	—	—

69° Double Branches

EF010								
100x100	1	3.4	C	191510	95.54	C	191796	112.48

^ADelivery Service Category DSC (see page 6)

Ⓐ =5 DAYS Ⓑ =5-15 DAYS Ⓒ =15-30 DAYS

01. Ensign Drainage Solutions



SIZE Ø mm	PACK SIZE	NOMINAL WEIGHT KG	ABOVE GROUND ▲			BELOW GROUND ▼		
			ΔDSC.	PRODUCT CODE	UNIT PRICE £	ΔDSC.	PRODUCT CODE	UNIT PRICE £

88° Long Tail Bend

EF055

100	1	4.4	C	191567	72.20	—	—	—
-----	---	-----	---	--------	-------	---	---	---



45° Long Tail Bend

EF055

ED055

100	1	4	C	191566	72.20	C	191778	76.88
-----	---	---	---	--------	-------	---	--------	-------



88° Long Tail Double Bends

EF054

70	1	3.1	C	191837	101.34	—	—	—
100	1	4.4	C	191838	111.81	—	—	—



88° Short Tail Double Bends

EF054

100	1	2.6	C	233647	67.39	—	—	—
150	1	6.9	C	233649	161.70	—	—	—



88° Single Long Tail Boss Branch Swept Radius with 4 x 50mm Push-fit Bosses (2 Left Hand, 2 Right Hand) (see BS EN 12056 part 2)

EF096

100	1	10	C	208644	366.40	—	—	—
150	1	15.9	C	291015	381.59	—	—	—

Bosses require drilling out using a 51mm hole saw.
Rubber grommets supplied in bags of 10. Product code 208205 (see page 39)
See page 39 for hole saw accessories.



88° Double Long Tail Boss Branch Swept Radius with 4 x 50mm Push-fit Bosses (see BS EN 12056 part 2)

EF097

100	1	11	C	208653	381.67	—	—	—
-----	---	----	---	--------	--------	---	---	---

Bosses require drilling out using a 51mm hole saw.
Rubber grommets supplied in bags of 10. Product code 208205 (see page 39)
See page 39 for hole saw accessories.



88° Long Tail Tee Branch

EF056

100x100	1	5.1	C	191568	212.22	—	—	—
---------	---	-----	---	--------	--------	---	---	---



SIZE Ø mm	PACK SIZE	NOMINAL WEIGHT KG	ABOVE GROUND ▲			BELOW GROUND ▼		
			^A DSC.	PRODUCT CODE	UNIT PRICE £	^A DSC.	PRODUCT CODE	UNIT PRICE £

45° Long Tail Branches (equal and unequal)

EF056

100x100	1	5.9	C	156723	212.22	—	—	—
150x150	1	18.3	C	156938	397.98	—	—	—

88° Long Tail Corner Branch

EF036

100x100	1	7.5	C	191559	249.34	—	—	—
---------	---	-----	---	--------	--------	---	---	---

88° Single Long Arm Branch

EF008

100	1	6	C	156726	154.66	—	—	—
-----	---	---	---	--------	--------	---	---	---

Single Boss Pipes 50mm Compression Opposed

EF090LT

100	1	5	A	280599	149.30	—	—	—
-----	---	---	---	--------	--------	---	---	---

O-Ring Gaskets (10 pack) – 259491

Double Boss Pipes 50mm Compression Opposed

EF091LT

100	1	5.2	A	281146	174.59	—	—	—
-----	---	-----	---	--------	--------	---	---	---

Double Boss Pipes 50mm Compression at 90°

EF092LT

100	1	5.2	A	281146	174.59	—	—	—
-----	---	-----	---	--------	--------	---	---	---

^ADelivery Service Category DSC (see page 6)

● A =5 DAYS ● B =5-15 DAYS ● C =15-30 DAYS

01. Ensign Drainage Solutions

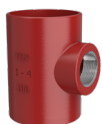


SIZE Ø mm	PACK SIZE	NOMINAL WEIGHT KG	ABOVE GROUND ▲			BELOW GROUND ▼		
			ΔDSC.	PRODUCT CODE	UNIT PRICE £	ΔDSC.	PRODUCT CODE	UNIT PRICE £

Single Boss Pipes 50mm Compression

EF090

50	1	1.2	B	156371	63.08	—	—	—
70	1	1.6	B	156460	63.08	—	—	—
100	1	2.1	A	156573	77.12	—	—	—
150	1	3.8	C	156836	125.73	—	—	—



Single Boss Pipe D/T 2" BSP

EF090T

100	1	1.7	B	191847	80.72	—	—	—
-----	---	-----	---	--------	-------	---	---	---



Strap on Boss

EF133

70	1	1.1	C	265078	118.29	—	—	—
100	1	1.4	B	262891	95.89	—	—	—
150	1	1.6	C	262890	118.29	—	—	—



Double Boss Pipes 50mm Compression Opposed

EF091

100	1	2.7	B	156575	99.64	—	—	—
150	1	4.4	C	192359	192.83	—	—	—



Double Boss Pipe D/T 2" BSP Opposed

EF091T

100	1	2.2	C	191848	103.22	—	—	—
-----	---	-----	---	--------	--------	---	---	---



Double Boss Pipes 50mm Compression at 90°

EF092

100	1	2.9	C	191849	99.64	—	—	—
150	1	5.0	C	214354	181.97	—	—	—



Double Boss Pipes D/T 2" BSPT at 90°

EF092T

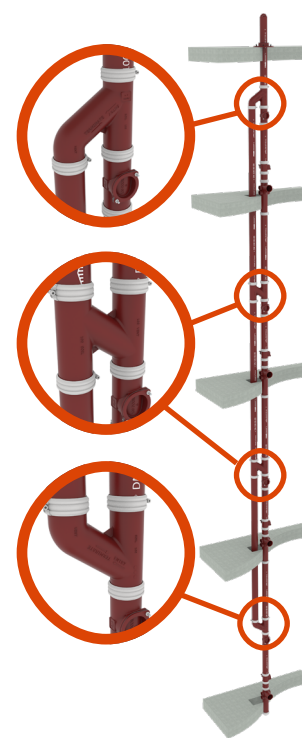
100	1	2	C	191850	103.22	—	—	—
70	1	1.4	C	245545	117.03	—	—	—

OUR VENTING BRANCHES HAVE MULTIPLE ADVANTAGES FOR EVERYONE INVOLVED WITH A PROJECT

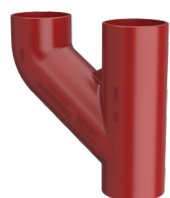
They are currently available in two sizes, DN100-100 and DN100-50, and is another example of our innovation to meet the future market needs.

Key benefits are:

- The reduction of the number of components gives a 30% material saving and therefore gives linked environmental benefits
- Enables designers to specify a single piece fitting when venting soil stacks rather than using lots of parts
- The pipe centres are as close together as possible which could mean there could be more living space within the building which is very valuable, especially in city locations
- This will also reduce the number of parts required for an assembly and therefore save contractors installation time on site
- Remove the need to cut a small bit of pipe, therefore reducing risk, noise, time and materials



DN100-100



DN100-50

SIZE Ø mm	PACK SIZE	NOMINAL WEIGHT KG	ABOVE GROUND ▲		
			^A DSC.	PRODUCT CODE	UNIT PRICE £
Interconnecting Venting Branch					
			EF013		
100x100	1	6.9	B	270320	101.77
100x50	1	3.8	B	279102	95.53
Entry/Terminal Venting Branch					
			EF013		
100x100	1	5.9	B	270303	121.05
100x50	1	3.2	B	279105	114.37

^ADelivery Service Category DSC (see page 6)

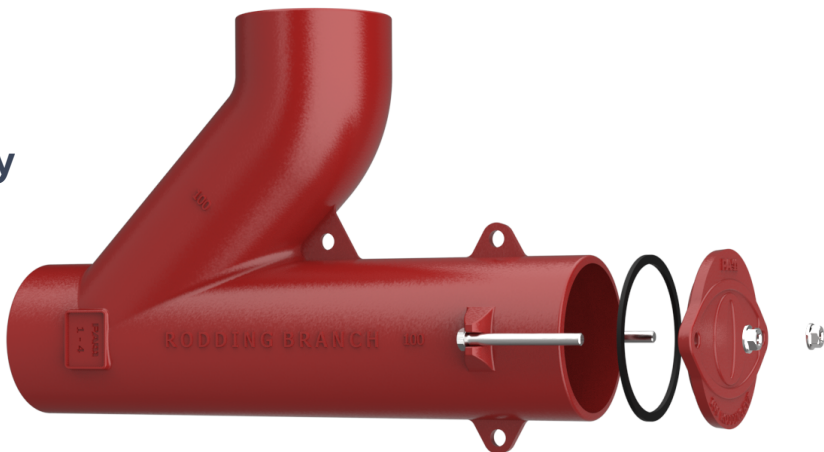
Ⓐ =5 DAYS Ⓑ =5-15 DAYS Ⓒ =15-30 DAYS

01. Ensign Drainage Solutions

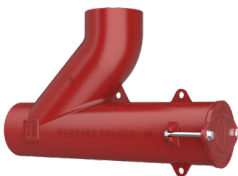
The one piece solution
saves you time and space
compared to a typical 8
piece components assembly



To see the time saving our Rodding branch
can give you, **CLICK** or **SCAN THIS QR CODE**



RODDING BRANCHES

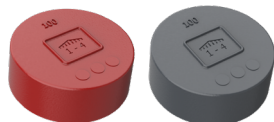


SIZE Ø mm	PACK SIZE	NOMINAL WEIGHT KG	ABOVE GROUND ▲			BELOW GROUND ▼		
			ΔDSC.	PRODUCT CODE	UNIT PRICE £	ΔDSC.	PRODUCT CODE	UNIT PRICE £
45° Rodding Branch								
EF009								
100	1	7	A	266138	155.06	—	—	—
88° Rodding Branch								
EF009								
100	1	7.6	A	266135	207.97	—	—	—

EXPANSION PLUGS



Expansion Plugs								
EF074						ED074		
50	1	0.2	C	156374	49.25	—	—	—
70	1	0.4	C	191582	29.75	—	—	—
100	1	0.7	B	191583	37.05	C	191823	49.40
150	1	1.5	C	191584	66.47	C	191824	90.97
200	1	4.1	C	156961	217.62	—	—	—
250	1	6	C	157060	207.21	—	—	—
300	1	9.1	C	157125	421.88	—	—	—

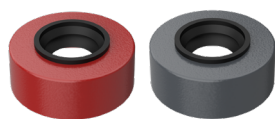


SIZE Ø mm	PACK SIZE	NOMINAL WEIGHT KG	ABOVE GROUND ▲			BELOW GROUND ▼		
			^A DSC.	PRODUCT CODE	UNIT PRICE £	^A DSC.	PRODUCT CODE	UNIT PRICE £

Blank Ends

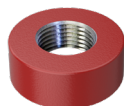
EF070						ED070		
50	1	0.2	A	191570	11.26	—	—	—
70	1	0.4	B	191571	11.91	—	—	—
100	1	0.8	A	191572	13.85	B	191818	16.34
125	1	1.1	C	191573	16.63	—	—	—
150	1	2.0	B	191574	20.02	B	191819	23.40
200	1	3.2	B	191575	88.37	C	191820	104.00
250	1	5.7	C	191576	180.59	C	191887	211.67
300	1	11.0	C	191569	370.46	C	191888	327.00
400	1	17.3	C	261894	385.64	C	265190	462.79
500	1	24.0	C	261892	450.41	C	267710	540.50

Blank Ends with 50mm Push-fit Connector



EF071						ED071		
70	1	0.4	C	191577	26.54	—	—	—
100	1	1	C	191578	28.64	C	191821	33.67
150	1	1.6	C	191580	34.42	C	191822	40.52

Blank Ends D/T 2" BSPT



EF071T								
100	1	0.9	B	191579	33.63	—	—	—

Universal Connector EPDM



EF071R								
50x56/48/40	1	0.1	B	155759	23.03	—	—	—

(OD Dimensions)

Blank End with Waste Push-Fit Connector

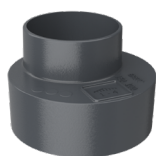
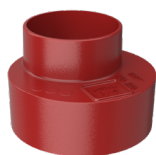


EF077								
100x38/32	1	0.4	C	191585	25.72	—	—	—

^ADelivery Service Category DSC (see page 6)

A =5 DAYS B =5-15 DAYS C =15-30 DAYS

01. Ensign Drainage Solutions



SIZE Ø mm	PACK SIZE	NOMINAL WEIGHT KG	ABOVE GROUND ▲			BELOW GROUND ▼		
			^DSC.	PRODUCT CODE	UNIT PRICE £	^DSC.	PRODUCT CODE	UNIT PRICE £

Taper Pipes

EF028						ED028		
70x50	1	0.5	B	191532	43.09	—	—	—
100x50	1	0.9	A	191533	50.67	—	—	—
100x70	1	0.9	A	191534	50.67	—	—	—
125x50	1	1.2	C	191842	50.93	—	—	—
125x70	1	1.5	C	191536	50.93	—	—	—
125x100	1	1.6	C	191537	50.93	—	—	—
150x50	1	1.7	C	191538	97.22	—	—	—
150x70	1	1.8	C	191539	97.22	—	—	—
150x100	1	2.2	B	191540	97.22	B	191810	104.95
150x125	1	2	C	191541	97.22	—	—	—
200x100	1	3.5	C	191542	157.92	C	191811	185.79
200x125	1	3.4	C	191543	157.92	—	—	—
200x150	1	3.9	C	191544	157.92	C	191812	185.79
250x100	1	5.9	C	191545	326.18	C	191889	382.35
250x150	1	6.1	C	191546	326.18	C	191886	382.35
250x200	1	6.1	C	191547	326.18	C	191892	382.35
300x150	1	10.4	C	191529	448.36	C	191890	532.24
300x200	1	11	C	191530	448.36	C	191891	532.24
300x250	1	12.7	C	191531	448.36	C	191885	532.24
400x300	1	20	C	157163	561.13	C	155504	665.80
500x150	1	26.5	C	270326	1,318.02	C	265404	1,447.46
500x400	1	27.9	C	157184	1,318.02	C	270327	1,447.46

Taper pipes to BS 437 (Timesaver Drain 225mm)

						ED028		
200x225	1	7.11	—	—	—	C	290404	315.21
250x225	1	8.31	—	—	—	C	293327	347.08



SIZE Ø mm	PACK SIZE	NOMINAL WEIGHT KG	ABOVE GROUND ▲			BELOW GROUND ▼		
			^A DSC.	PRODUCT CODE	UNIT PRICE £	^A DSC.	PRODUCT CODE	UNIT PRICE £

'P' Trap Plain (Supplied with support lug)

EF034						ED034		
100	1	4.5	A	156666	69.24	C	191815	81.53

'P' Trap with Head Access (*Supplied without support lug only)

EF037						ED037		
50*	1	2	B	156419	105.78	—	—	—
70*	1	2.7	C	156518	105.78	—	—	—
100*	1	5.2	B	156667	114.52	C	182482	133.47
150*	1	11.6	B	156911	204.85	C	182483	227.30

Branch Trap

EF080								
100	1	10.2	C	191587	251.03	—	—	—

Stench Trap

EF081								
100	1	17.4	C	155841	521.41	—	—	—
150	1	38	C	155921	1,100.33	—	—	—

^ADelivery Service Category DSC (see page 6)

● A =5 DAYS ● B =5-15 DAYS ● C =15-30 DAYS

01. Ensign Drainage Solutions



SIZE Ø mm	PACK SIZE	NOMINAL WEIGHT KG	ABOVE GROUND ▲			BELOW GROUND ▼		
			ΔDSC.	PRODUCT CODE	UNIT PRICE £	ΔDSC.	PRODUCT CODE	UNIT PRICE £

Stack Support Pipes

EF050

70	1	1.8	C	191856	60.05	—	—	—
100	1	2.8	B	191562	66.81	—	—	—
125	1	3.6	C	191563	74.08	—	—	—
150	1	4.8	C	191564	105.69	—	—	—



Stack Support Brackets supplied with rubber seal

EF051

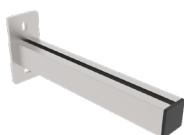
70	1	1.1	C	191857	38.85	—	—	—
100	1	1.5	B	191843	53.37	—	—	—
125	1	1.7	C	191844	57.08	—	—	—
150	1	2.6	C	191845	77.33	—	—	—



Stack Support Pipes Complete with Bracket and Seal

EF050/51

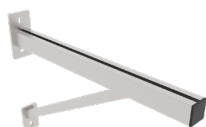
200	1	10	C	157014	478.56	—	—	—
250	1	18.5	C	157097	725.47	—	—	—
300	1	30.8	C	157160	936.27	—	—	—
400	1	64.8	C	269859	2,652.18	—	—	—
500	1	89.8	C	269733	3,076.09	—	—	—



Stack Support Pipe Cantilever Arm Bracket (Galvanised Steel)

EF052

—	1	2	C	192329	44.78	—	—	—
---	---	---	---	--------	-------	---	---	---

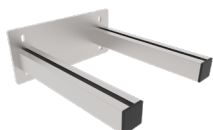


Stack Support Pipe Cantilever Arm Bracket with Support (for stack support pipes 200–300mm in diameter) (Galvanised Steel)

EF052

—	1	4.3	C	192330	116.71	—	—	—
---	---	-----	---	--------	--------	---	---	---

STACK SUPPORT



SIZE Ø mm	PACK SIZE	NOMINAL WEIGHT KG	ABOVE GROUND ▲			BELOW GROUND ▼		
			Δ DSC.	PRODUCT CODE	UNIT PRICE £	Δ DSC.	PRODUCT CODE	UNIT PRICE £

Stack Support Pipe Console Bracket (Galvanised Steel)

EF052

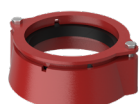
—	1	4.6	C	192331	107.21	—	—	—
---	---	-----	---	--------	--------	---	---	---

Clamp for support brackets - 10mm retaining nut - to suit

EF052

—	1	0.3	C	192332	1.85	—	—	—
---	---	-----	---	--------	------	---	---	---

CONNECTORS



Movement Connector

EF058

50	1	2.4	C	156038	167.23	—	—	—
100	1	4.4	B	192304	207.23	—	—	—
150	1	7.8	C	156235	247.23	—	—	—

Transitional Connectors

EF059

100	1	1.8	C	156650	79.00	—	—	—
150	1	4.2	C	156902	145.29	—	—	—

Asphalt Roof Connector

EF073

100	1	2.1	C	191581	105.14	—	—	—
-----	---	-----	---	--------	--------	---	---	---

[ΔDelivery Service Category DSC \(see page 6\)](#)

Ⓐ =5 DAYS Ⓑ =5-15 DAYS Ⓒ =15-30 DAYS

Air~Wave Vent Cowl

Our Air~Wave vent cowl is a unique designed Pam Building fitting that allows the Ensign Soil pipe system to have a ventilation cap at the termination of a soil pipe system.

The unique wave apertures allow for air to flow through the pipe system but will also negate any blockages or any foreign objects/animals from entering the pipe system.

→ Also available in Timesaver Soil on page 79



SIZE Ø mm	PACK SIZE	NOMINAL WEIGHT KG	ABOVE GROUND ▲			BELOW GROUND ▼		
			ΔDSC.	PRODUCT CODE	UNIT PRICE £	ΔDSC.	PRODUCT CODE	UNIT PRICE £
Air~Wave Vent Cowl								
EF075								
100	1	0.6	B	280544	15.23	—	—	—
Roof Penetration Flanges								
EF076								
75	1	6.1	C	205922	237.86	—	—	—
100	1	6.6	C	205924	250.81	—	—	—
150	1	6.6	C	238554	453.90	—	—	—
Offsets								
EF024								
100x75	1	2.3	C	191526	57.37	—	—	—
50x130	1	1.5	C	191524	47.45	—	—	—
70x130	1	2.2	C	191525	72.02	—	—	—
100x130	1	3.8	C	191527	94.60	—	—	—

Ensign EEZI-FIT

EEZI-FIT is intended for use for gravity above ground sanitary applications in accordance with BS EN 12056-2:2000 (0.5 bar performance).

Ideal for multi-floor applications EEZI-FIT is the ideal system for projects with long vertical soil stacks, such as flats and apartments, hotels, office blocks etc; where the main stack will remain unchanged over time.

Benefits

- All the benefits of cast iron with the advantages of push-fit assembly. The system utilises a new gasket design that makes jointing simple, and completed in seconds. Electrical continuity can be accommodated.
- EEZI-FIT connects to standard Ensign double spigot pipe and is fully compatible with all Ensign plain-ended fittings.
- The installation of an Ensign mechanical joint positioned in the system can allow dismantling for future retro-fit.

ENSIGN EEZI-FIT



SPARES RANGE—EEZI-FIT ACCESSORIES



SPARES RANGE—EEZI-FIT ACCESSORIES



SIZE Ø mm			PACK SIZE	NOMINAL WEIGHT KG	ABOVE GROUND ▲				
					ⒶDSC.	PRODUCT CODE		UNIT PRICE £	
EEZI-FIT Couplings									
						EZ001			
100		12		1.3	A	208191		25.28	
150		1		2	C	216312		50.55	
88° Short Radius Bends									
						EZ002			
100		1		2.4	B	208192		50.51	
45° Short Radius Bends									
						EZ002			
100		1		1.8	B	208193		50.51	
Boss Pipe Push-Fit with Single 50mm Waste (Supplied with grommets)									
						EZ090			
100		1		2.1	B	208199		80.33	
EEZI-FIT coupling gaskets (bag of 10)									
100	10	—	C	208204	39.53	—	—	—	
150	10	—	C	216316	41.85	—	—	—	

^ADelivery Service Category DSC (see page 6)

Ⓐ =5 DAYS Ⓑ =5-15 DAYS Ⓒ =15-30 DAYS

01. Ensign Drainage Solutions

GULLY INLETS



Bellmouth Gully Inlet Body Only

ED060

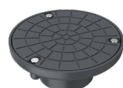
SIZE Ø mm	PACK SIZE	NOMINAL WEIGHT KG	ABOVE GROUND ▲ DSC.	PRODUCT CODE	UNIT PRICE £	BELOW GROUND ▼ DSC.	PRODUCT CODE	UNIT PRICE £
100	1	2.4	—	—	—	C	191825	89.78
150	1	2.9	—	—	—	C	191826	147.79



200mm Plain Grating to suit Bellmouth Gully Inlet

ED065

SIZE Ø mm	PACK SIZE	NOMINAL WEIGHT KG	ABOVE GROUND ▲ DSC.	PRODUCT CODE	UNIT PRICE £	BELOW GROUND ▼ DSC.	PRODUCT CODE	UNIT PRICE £
200	1	1.6	—	—	—	B	191828	20.94

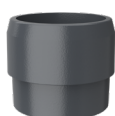


(Grey only)

Gully Inlet Body with Fitted Sealing Plate

ED066

SIZE Ø mm	PACK SIZE	NOMINAL WEIGHT KG	ABOVE GROUND ▲ DSC.	PRODUCT CODE	UNIT PRICE £	BELOW GROUND ▼ DSC.	PRODUCT CODE	UNIT PRICE £
100	1	4.4	—	—	—	C	191852	121.68
150	1	5.2	—	—	—	C	191853	207.74



Ensign to Supersleve Connectors

ED076

SIZE Ø mm	PACK SIZE	NOMINAL WEIGHT KG	ABOVE GROUND ▲ DSC.	PRODUCT CODE	UNIT PRICE £	BELOW GROUND ▼ DSC.	PRODUCT CODE	UNIT PRICE £
100	1	1.8	—	—	—	C	191813	64.37
150	1	4.6	—	—	—	C	191814	112.63

CONNECTORS & FLANGES



Puddle Flange

ED078

SIZE Ø mm	PACK SIZE	NOMINAL WEIGHT KG	ABOVE GROUND ▲ DSC.	PRODUCT CODE	UNIT PRICE £	BELOW GROUND ▼ DSC.	PRODUCT CODE	UNIT PRICE £
(Grey) 100	1	4.6	—	—	—	C	191829	113.22
(Grey) 150	1	6.6	—	—	—	C	191830	139.77
(Black) 250	1	13	—	—	—	C	192318	180.01
(Black) 300	1	20	—	—	—	C	192319	216.82



Multi-clamp Puddle Flange

ED078

SIZE Ø mm	PACK SIZE	NOMINAL WEIGHT KG	ABOVE GROUND ▲ DSC.	PRODUCT CODE	UNIT PRICE £	BELOW GROUND ▼ DSC.	PRODUCT CODE	UNIT PRICE £
(Grey) 200	1	6.1	—	—	—	C	191831	355.96



SIZE Ø mm	PACK SIZE	NOMINAL WEIGHT KG	ABOVE GROUND ▲			BELOW GROUND ▼		
			^A DSC.	PRODUCT CODE	UNIT PRICE £	^A DSC.	PRODUCT CODE	UNIT PRICE £
45° Inspection Chamber Circular Access One Branch each side								
ED012								
100x100	1	17.4	—	—	—	C	191832	447.95
150x100	1	18.8	—	—	—	C	191833	580.25
150x150	1	20.6	—	—	—	C	191834	736.59
45° Inspection Chamber Rectangular Access One Branch each side								
ED016								
100x100	1	9.3	—	—	—	C	269013	499.32
150x100	1	23.15	—	—	—	C	283471	703.54
150x150	1	23.15	—	—	—	C	283222	722.53
200x200	1	32.4	—	—	—	C	291541	754.07
45° Inspection Chamber Rectangular Access Two Branches each side								
ED017								
100x100	1	16.8	—	—	—	C	270301	955.61
150x150	1	46.2	—	—	—	C	283244	1398.02
200x150	1	61.4	—	—	—	C	292761	1470.62
200x200	1	64.5	—	—	—	C	291384	1508.14

^ADelivery Service Category DSC (see page 6)

Ⓐ =5 DAYS Ⓑ =5-15 DAYS Ⓒ =15-30 DAYS

01. Ensign Drainage Solutions



SIZE Ø mm	PACK SIZE	NOMINAL WEIGHT KG	ABOVE GROUND ▲			BELOW GROUND ▼		
			^DSC.	PRODUCT CODE	UNIT PRICE £	^DSC.	PRODUCT CODE	UNIT PRICE £

T-Box Spanner

EF098

—	1	—	B	191200	12.88	—	—	—
---	---	---	---	--------	-------	---	---	---



Ratchet Spanner

EF100

—	1	—	B	191201	117.89	—	—	—
---	---	---	---	--------	--------	---	---	---



13mm Deep Socket

EF101

13mm	1	—	B	191202	29.64	—	—	—
------	---	---	---	--------	-------	---	---	---



Allen Key Socket Adaptor

EF102

—	1	—	B	191753	29.64	—	—	—
---	---	---	---	--------	-------	---	---	---



Ensign 'Extrem 1K' (Cut-ends treatment)—Acrylic Resin Touch-up Paint for Red System (Quick-dry, non drip, brush applied)

—	1	0.5	C	226962	51.68	—	—	—
---	---	-----	---	--------	-------	---	---	---



Two-part, touch-up Paint spray for Red System

0.4L	1	—	C	216317	76.37	—	—	—
------	---	---	---	--------	-------	---	---	---



Two-part, touch-up Paint spray for Grey System

0.4L	1	—	—	—	—	C	216318	77.12
------	---	---	---	---	---	---	--------	-------



SIZE Ø mm	PACK SIZE	NOMINAL WEIGHT KG	ABOVE GROUND ▲		
			^A DSC.	PRODUCT CODE	UNIT PRICE £

EEZi-FIT boss connector grommet

—	10	—	C	208205	39.53
---	----	---	---	--------	-------

51mm Hole Saw for Cast Iron

—	—	—	C	208206	55.53
---	---	---	---	--------	-------

Hole Saw Arbour with Drill for EEZI-FIT & Timesaver

—	—	—	C	192327	68.91
---	---	---	---	--------	-------

Pilot Drill for EEZI-FIT & Timesaver

—	—	—	C	192328	17.35
---	---	---	---	--------	-------

Lubricant for push-fit assembly (500g Tub)

—	500g Tub	—	C	199037	32.88
---	----------	---	---	--------	-------

^A DSC.	PACK SIZE	UNIT PRICE £	^A DSC.	PRODUCT CODE	UNIT PRICE £
-------------------	-----------	-----------------	-------------------	-----------------	-----------------

Plastic Moulded Plug To Temporarily Blank Off Boss Pipes

50	10	—	C	192255	41.66
----	----	---	---	--------	-------

^ADelivery Service Category DSC (see page 6)

A =5 DAYS **B** =5-15 DAYS **C** =15-30 DAYS



PRE-ASSEMBLED STACK SOLUTIONS

The service offers so much more than just pre-assembly.

This service requires close collaboration with the complete supply chain. We will manage the process from product selection, bespoke stack design, manufacture, distribution with our partners and on site assistance.

The results will provide a reduction of time on-site with the added assurance of the consistent product assembly and a reduction of on-site scrap parts and packaging.

You will start seeing our **Ensign Agilium® stacks** in your Pre-assembly stillages. Don't worry they're **100% compatible with our Ensign Soil range.**

On-site benefits

- Reduces on-site installation time by up to 60%
- Reducing on-site labour costs
- All stacks are air tested at the factory as standard, before dispatch
- Stacks supplied in purpose-made stillages for robust storage and easy movement on site
- Minimal on-site wastage
- No surplus products ordered
- Reduced pipe cutting
- Packaging will be reduced so this removes packaging scrap from your site
- Cast iron flexibility
- Connecting pipe between floors cut on-site to allow for on-site variances
- Designed for one-person handling

Design benefits

- Early collaboration ensures optimised stack designs offering the best solutions
- Drawings provided for approval
- Greater level of accuracy material benefits
- Cast iron pre-assembled stack solutions are fire rated to the safest level possible, A1.
- Acoustically cast iron is the quietest material on the market
- May not need additional insulation
- Flexible couplings with high speed assembly
- The stainless steel rapid coupling is nearly 3 times quicker than fusion welded joints in HDPE – (Luckins pricing guide)
- No concern about expansion when temperatures fluctuate
- Cast iron pre-assemblies will remain straight and not bow



We will work with you at the start of the project to identify the most effective use of products.



Delivery can be planned to suit your needs



Your stacks will be designed from our current offer of Pre-Assembly stacks or we will design a bespoke stack for your project.



Installation will be 60% faster on-site



Once the drawings have been signed and we have your order, your stacks will be Pre-Assembled within 2 weeks.

The service

Stage 1

Early Collaboration

Our team will engage with you at the early stages of the project to evaluate the possibilities and benefits of using a pre-assembly solution. Through early collaboration the team can identify any unique requirements and design a solution to meet your needs.

Stage 2

Estimation

From the designs the technical team can calculate an accurate initial estimation.

Stage 3

Stack designs approval

Pam Building will provide detailed CAD drawings and 3D models of the stack arrangements for site approval. The stacks are fully compliant with BS EN 12056-2:2000 ensuring all soil stack branches are swept radius in accordance with the guidelines.

Stage 4

Simplified ordering through the merchant

Our pre-assembly stacks are set up with a standard product code and are ordered in the same way as standard individual Ensign components, through the merchant distributor.

Stage 5

Assembly and air test

The ordered stack arrangements are then assembled within 2 weeks in a purpose made stillage at the Pam Building manufacturing site in Telford. When each stack is fully assembled it is air pressure tested as standard to 0.5 bar for 5 minutes exceeding the requirements of BS EN 12056-2:2000, saving considerable on-site labour time. The stacks are then labelled with the relevant location reference and floor level in accordance with the drawings.

Stage 6

Logistics

The unique stillages are designed to restrict movement of the stack assemblies during transportation to the project site. The stillage design also allows for easy off-load via fork lift or hoist and have wheels fitted to facilitate movement around the site.

Stage 7

Flexibility on-site

Our pre-assembly soil stacks are based on a standard 1.75m length. The stacks are designed to be suitable as a one-person lift and average around 20 kg, falling well within the health and safety guidelines. To fully connect each floor a soil pipe is cut on site, which allows flexibility for any site variances.

Stage 8

Installation support

The Pam Building team will liaise with stakeholders throughout the project providing guidance and support to ensure a smooth installation.





Pre-Assembled Stack Solutions



1. Saving

Modern methods of manufacturing are now offering massive savings and with our Pre-Assembly Solution we have seen up to a 60% saving!



2. Factory controls

The stacks are designed, made bespoke to your needs, assembled, air-tested and inspected in our factory in Telford. The stacks will be assembled within 2 weeks from order.



3. Planned deliveries

With our distribution partners we can plan delivery of your stacks to suit your build programme.



4. Site efficiency

When installing them on site you will become more efficient than traditional methods.



5. Site safety and space

Less space and time will be required on site, which will reduce the need for cutting and storing products on-site.



6. Improved results

- ✓ Reduced time on site
- ✓ Improved quality
- ✓ Reduced environmental impact



CLICK or SCAN THE QR CODE to
WATCH THE FULL VIDEO ON YOUTUBE

BIM Ready

www.pambuilding.co.uk aims to ease the burden on developers, specifiers and contractors in the early stages of construction by providing two levels of BIM library and supporting elements.

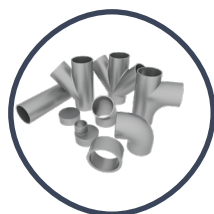
The new releases include a full-data object library, a platform that provides supporting information and free individual BIM files of all products and systems.

These include a BS EN 877:1999+A1:2006 'Generic Cast Iron' content package for use in early design stages, with fittings parametrically modelled, and in standard geometric settings. The files contain only the most vital information, reducing the time and effort required to create early stage plans. These 'data-light' designs can also be overwritten with the full data specification libraries without issue, speeding up later stages of development that require more detailed plans streamlining conversion from design to as built work flow.

Our BIM Libraries are designed to aid the data transition between Public Health consultant's and Main Contract MEP design engineers, creating a leaner process that reduces design time. As the transitions usually require more explicit data being added to models, Pam Building are also currently creating plugins to quickly add the full data, either automatically by system type, or through floor level and manual area selection.

By providing small file sizes in the generic content, it will make it easier for early stage specification in BIM and will speed up the whole planning process; this in turn will create measurable cost and time savings for our customers.

Available content



BS EN 877:1999
+A1:2006 CAST
IRON GENERIC
BIM LIBRARY



BS 437:2008
CAST IRON GENE-
RIC BIM LIBRARY



ENSIGN SOIL
& EEZI-FIT
BIM LIBRARY
BS EN 877:1999
+A1:2006



ENSIGN DRAIN BIM
LIBRARY
BS EN 877:1999
+A1:2006



TIMESAVER DRAIN
BIM LIBRARY
BS 437:2008

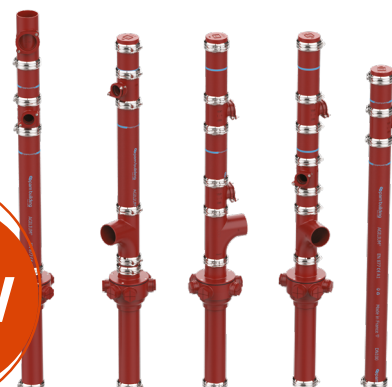
BIM Services

We have been developing BIM level 2 libraries in Revit for our ranges of soil and drain products.

Call our Technical team for further help: 01952 262529



CLICK or SCAN THE QR CODE
to see how effective it is to
design in **REVIT WITH OUR**
PRE-ASSEMBLY LIBRARY





New registration required to keep up to date with new content/revised



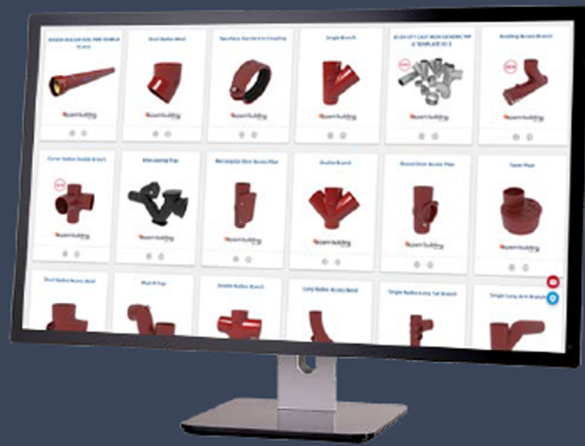
Full parametric pipe systems generic and full data



Access to design aid plugins

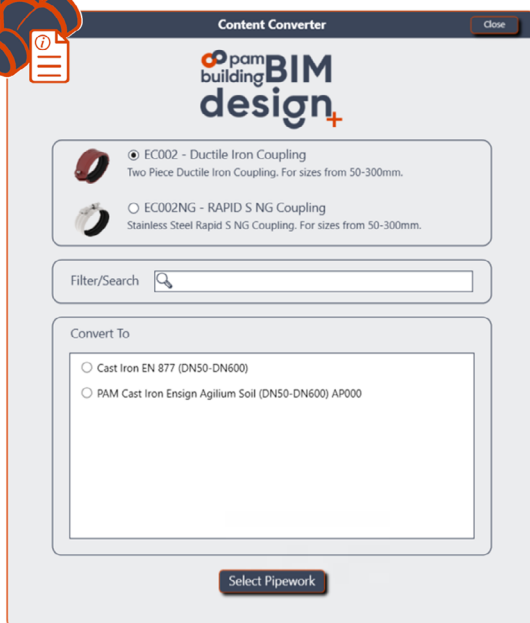
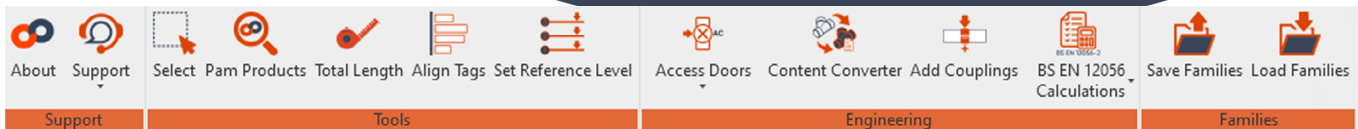


Access to guidance videos and 'How to?' FAQs



CLICK or SCAN THE QR CODE to see how fast and easy it is to design with our **BIM LIBRARY**

pam building BIM design+



Pam Building's New BIM design+ design aid tools

Pam building's New BIM design+ tools have been developed to help engineers in MEP design when designing in cast iron drainage. Tools included;

Tools: Easy select drainage pipe systems, locate Pam Building products with ease in large projects, sum lengths of pipe, set reference levels so pipes can be scheduled per level, and align pipe tags with ease.

Engineering: Placing Access doors with ease, with ability to auto set heights and angles to required levels. Content Converter allows users to switch from the Generic content to Pam Building's full data content at a click of a button. Add couplings, allows couplings to be added at every 3metres. Finally BS EN 12056 Calculations allows you to ensure your pipe system conforms to standard and is sized to take the number of appliances within the building's design.



TIMESAVER DRAIN

The Timesaver drain cast iron below ground system has been the first choice for under-building drainage for commercial, public and residential buildings since 1980.

Cast Iron Drainage Solutions

Product Standard: BS 437:2008

Applications

- Underbuilding drainage—encased in concrete
- Pipework to be laid in shallow trenches
- Under roads
- Unstable ground
- Ground containing methane
- Bridges

Features

- 100, 150 and 225mm diameter pipes and fittings
- Two piece ductile iron couplings
- Section thickness from 8-15mm
- Range of traditional British Standard fittings
- Bellmouth Gullies/inlets
- Gully traps
- Raising pieces
- Anti-flooding traps

Benefits

- Exceptional crush resistance—vastly superior to other materials
- Timesaver BS 437:2008 150 KN/m
- Clay 40 KN/m
- Plastic 6 KN/m
- Robust strength
- To withstand over-vigorous rodding/jetting
- Can be installed where the ground is unstable
- Can be installed in shallow trenches
- Less bedding materials required saving cost
- Can be laid in 'as dug' trenches
- Fit and forget peace of mind
- Exceptional service life



Encasing pipework in the concrete slab

- Cast iron has the proven strength and crush resistance to withstand the weight of the concrete and remain robust during the pouring process unlike the more volatile lighter-weight plastic materials which can require filling to weigh them down.
- Cast iron is not affected by the high temperatures generated during the pouring and curing process—which can reach temperatures in excess of 70°, depending on the volume of concrete.
- Cost of failure can be very high if concrete slabs require digging up to repair drainage failures.

All benefits of cast iron

- Non-combustible fire rated A2, S1
- Excellent acoustic properties
- Minimal expansion
- Strong and robust
- Excellent environmental properties:
- Made from up to 99% recycled content
- 100% recyclable
- Long life span

Timesaver Drain & Soil Coating

3m Pipes:

- Internally lined with an ochre two-part epoxy coating
- Externally coated in a black acrylic paint.

Fittings and couplings

- Internally and externally coated in a black water-based paint

Overpainting

- The Timesaver coating shall accept over-coating with alkyd and water based paints normally used on metallic structures

04. Timesaver Drain

PIPE



RAL 9005

COUPLINGS



BRACKET



SIZE Ø mm	PACK SIZE	NOMINAL WEIGHT KG	BELOW GROUND ▼		
			^A DSC.	PRODUCT CODE	UNIT PRICE £
3m Double Spigot Pipe					
TD00					
100	26	56.1	A	156568	292.71
150	11	95.1	A	156832	541.83
225	4	195.0	A	157042	1,621.95
Standard Coupling (EPDM Gasket)					
TD01					
100	8	2.8	A	191294	60.70
150	6	3.9	A	191295	73.54
225	1	8.4	A	191296	168.52
Stepped Coupling (EPDM Gasket)					
TD02					
100	8	2.8	A	191297	62.98
150	6	3.9	A	191298	76.65
Hanging Bracket or Wall Fixing					
TD640					
100	1	2.3	B	191358	50.84
150	1	2.8	B	191359	53.71
Mild Steel Hanging Bracket or Wall Fixing					
225	1	4.0	B	192374	153.23



SIZE Ø mm	PACK SIZE	NOMINAL WEIGHT KG	BELOW GROUND ▼		
			^A DSC.	PRODUCT CODE	UNIT PRICE £

87.5° Medium Radius Bends

TD06

100	1	8.1	A	191219	113.60
150	1	16.0	A	191225	261.36
225	1	41.5	B	191229	792.94

80° Medium Radius Bend

100	1	8.7	C	191218	121.32
-----	---	-----	---	--------	--------

67.5° Medium Radius Bends

100	1	7.5	C	191217	121.32
150	1	13.8	C	191224	261.36

60° Medium Radius Bend

100	1	6.0	B	191216	113.60
-----	---	-----	---	--------	--------

45° Medium Radius Bends

100	1	5.8	A	191215	96.53
150	1	10.1	B	191223	209.15
225	1	31.8	B	191228	792.94

35° Medium Radius Bends

100	1	4.6	A	191214	96.53
150	1	9.3	B	191222	261.36

22.5° Medium Radius Bends

100	1	3.6	A	191213	96.53
150	1	7.2	B	191221	195.83
225	1	18.4	B	191227	792.94

10° Medium Radius Bends

100	1	3.0	A	191212	96.53
150	1	5.2	B	191220	195.83
225	1	13.0	C	191226	792.94

^ADelivery Service Category DSC (see page 6)

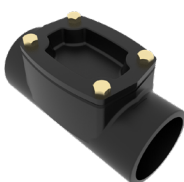
A =5 DAYS

B =5-15 DAYS

C =15-30 DAYS

04. Timesaver Drain

RADIUS BENDS



Kits contain
a door, 4 bolts
and a gasket

ACCESS PIPES

SIZE Ø mm	PACK SIZE	NOMINAL WEIGHT KG	BELOW GROUND ▼		
			^A DSC.	PRODUCT CODE	UNIT PRICE £

87.5° Medium Radius Bend with Rear Access

TD08

100	1	11.4	C	191233	249.31
150	1	20.3	C	191235	554.15
225	1	57.8	C	191237	1,214.80

45° Medium Radius Bend with Rear Access

TD08

100	1	8.7	C	191232	244.55
150	1	15.9	C	191234	597.29
225	1	46.8	C	191236	1,214.80

87.5° Medium Radius Bend Side Access

TD09

100	1	12.4	C	191239	315.60
150	1	20.5	C	191241	554.15
225	1	57.5	C	191243	1,185.23

45° Medium Radius Bend Side Access

TD09

100	1	10.0	C	191238	298.35
150	1	26.6	C	191240	724.16
225	1	46.8	C	191242	1,185.23

Access Pipes

TD56

100	1	9.7	B	191344	280.62
150	1	15.4	C	191345	512.41
225	1	62.6	C	191346	1244.71

Access Door Spares Kit

100	1	—	C	259478	44.94
150	1	—	C	248137	205.67
225	1	—	C	259354	512.69

These spares kits are compatible with TD08/TD51/TD52/TD53/TD56



SIZE Ø mm	PACK SIZE	NOMINAL WEIGHT KG	BELOW GROUND ▼		
			^A DSC.	PRODUCT CODE	UNIT PRICE £

87.5 Medium Radius Bend with Heel Rest

TD07

100	1	9.2	A	191230	130.30
150	1	18.0	B	191231	362.63



87.5° Long Radius Bend

TD15

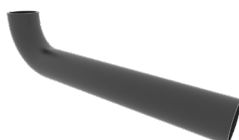
100	1	12.9	B	191244	187.69
150	1	24.1	C	191245	375.50



87.5° Long Radius Bend with Heel Rest

TD22

100	1	15.1	B	191246	201.80
150	1	28.0	C	191247	442.45



87.5° Long Tail Bend (815mm)

TD102

100 x 815	1	18.6	C	191289	287.88
-----------	---	------	---	--------	--------



87.5° Long Tail Bend (850mm) Large Radius

TD104

[†] 100 x 850	1	33.0	C	197173	704.62
[†] 150 x 850	1	54.0	C	192699	1,136.08



45° Clearing Arm Bend

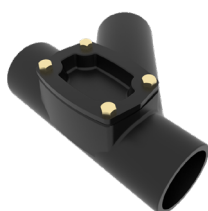
TD425

100	1	11.9	C	191292	219.87
-----	---	------	---	--------	--------

^ADelivery Service Category DSC (see page 6)

A =5 DAYS **B** =5-15 DAYS **C** =15-30 DAYS

04. Timesaver Drain



SIZE Ø mm	PACK SIZE	NOMINAL WEIGHT KG	BELOW GROUND ▼		
			^A DSC.	PRODUCT CODE	UNIT PRICE £

87.5° Plain Branches

TD37

100 x 100	1	7.6	A	191250	150.68
150 x 100	1	17.7	B	191252	325.40
150 x 150	1	21.8	C	191254	371.84
225 x 100	1	40.0	C	191256	963.11
225 x 150	1	46.3	C	191258	1,027.20
225 x 225	1	58.5	C	191260	1,141.77

67.5° Plain Branches

TD37

100 x 100	1	8.9	C	191249	158.62
-----------	---	-----	---	--------	--------

45° Plain Branches

TD37

100 x 100	1	11.4	A	191248	150.68
150 x 100	1	16.6	B	191251	340.63
150 x 150	1	25.3	B	191253	371.84
225 x 100	1	42.0	C	191255	963.11
225 x 150	1	45.8	C	191257	1,027.20
225 x 225	1	64.4	C	191259	1,141.77

87.5° Branch with Access Door—Right Hand

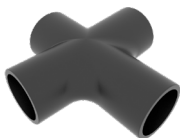
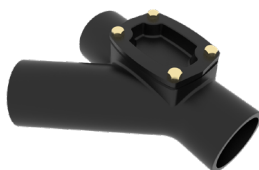
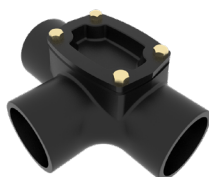
TD51

100 x 100	1	14.2	C	191262	347.59
150 x 100	1	21.4	C	191264	641.69
225 x 150	1	67.3	C	191267	1,497.98
225 x 225	1	79.5	C	191269	1,592.48

45° Branch with Access Door—Right Hand

TD51

100 x 100	1	15.0	C	191261	347.59
150 x 100	1	21.9	C	191263	615.26
225 x 100	1	62.8	C	191265	1,451.85
225 x 150	1	66.8	C	191266	1,497.98
225 x 225	1	85.4	C	191268	1,592.48



SIZE Ø mm	PACK SIZE	NOMINAL WEIGHT KG	BELOW GROUND ▼		
			^A DSC.	PRODUCT CODE	UNIT PRICE £

87.5° Branch with Rear Access

TD52

100 x 100	1	13.4	C	191271	347.59
150 x 100	1	22.9	C	191273	641.69
225 x 100	1	62.8	C	191275	1,451.85
225 x 150	1	62.4	C	191276	1,497.98
225 x 225	1	79.5	C	191278	1,592.48

45° Branch with Rear Access

TD52

100 x 100	1	16.1	C	191270	364.33
150 x 100	1	22.9	C	191272	615.26
225 x 100	1	63.0	C	191274	1,451.85
225 x 225	1	84.40	C	191277	1,592.48

87.5° Branches with Access Door—Left Hand

TD53

100 x 100	1	11.7	C	191280	364.33
150 x 100	1	21.2	C	191282	641.69
225 x 100	1	61.0	C	191284	1,451.85
225 x 150	1	67.3	C	191286	1,497.98
225 x 225	1	79.5	C	191288	1,592.48

45° Branches with Access Door—Left Hand

TD53

100 x 100	1	15.0	C	191279	364.33
150 x 100	1	21.2	C	191281	615.26
225 x 100	1	62.8	C	191283	1,451.85
225 x 150	1	66.8	C	191285	1,497.98
225 x 225	1	85.4	C	191287	1,592.48

Double Plain Branch 87.5°

TD447

100 x 100	1	10.6	C	191293	256.21
-----------	---	------	---	--------	---------------

^ADelivery Service Category DSC (see page 6)

A =5 DAYS

B =5-15 DAYS

C =15-30 DAYS

04. Timesaver Drain



SIZE Ø mm	PACK SIZE	NOMINAL WEIGHT KG	BELOW GROUND ▼		
			^A DSC.	PRODUCT CODE	UNIT PRICE £

Taper Pipe

TD41

150 x 100	1	3.5	B	191333	148.03
225 x 100	1	13.6	B	191334	379.60
225 x 150	1	13.4	B	191335	379.60
*225 x 200	1	6.2	C	191336	338.26
*225 x 250	1	9.8	C	192431	352.29

*Connects with a 200 and 250mm Ensign coupling (ED001)

Socket Ferrule with C.I. Cap

TD36

100	1	3.4	C	191330	191.63
-----	---	-----	---	--------	---------------

Blank End—Plain

TD34

100	1	1.3	A	191326	48.83
150	1	2.5	B	191327	93.17
225	1	10.7	B	191328	429.01

Transitional Pipe Adaptor from Timesaver Drain to Supersleve

TD118

100	1	2.1	B	191350	78.40
150	1	5.0	B	191351	137.30



SIZE Ø mm	PACK SIZE	NOMINAL WEIGHT KG	BELOW GROUND ▼		
			^A DSC.	PRODUCT CODE	UNIT PRICE £

87.5° Gully Trap—Plain

TD60

100	1	12.1	B	191399	150.68
150	1	24.4	C	191400	374.93

45° Gully Trap—Plain

TD60

100	1	11.5	C	191398	400.72
-----	---	------	---	--------	--------

180° Gully Trap—Plain

TD60

100	1	14.1	C	191397	205.88
-----	---	------	---	--------	--------

87.5° Gully Trap with Surface Access

TD107

100	1	23.3	C	191402	435.70
-----	---	------	---	--------	--------

87.5° Gully Trap with 225mm Inlet

TD64

100	1	24.0	C	191401	367.73
-----	---	------	---	--------	--------

Horizontal Running Trap with Double Access

TD475

100	1	23.0	C	191404	751.05
150	1	55.4	C	191405	1,280.74
225	1	143.0	C	191406	3,677.02

^ADelivery Service Category DSC (see page 6)

A =5 DAYS

B =5-15 DAYS

C =15-30 DAYS

04. Timesaver Drain



SIZE Ø mm	PACK SIZE	NOMINAL WEIGHT KG	BELOW GROUND ▼		
			^A DSC.	PRODUCT CODE	UNIT PRICE £
Gully Inlet—Plain (Body Only)					
TD500					
100	1	8.4	B	191301	156.93



Gully Inlet with Horizontal Branch (Body Only)					
TD105					
100 x 100	1	10.5	C	191299	210.86



Gully Inlet with Vertical Branch (Body Only)					
TD106					
100 x 100	1	13.7	C	191300	210.86



Plain Raising Piece 190mm to Bellmouth TD500/TD105/TD106					
TD525					
100 x 150 high	1	7.8	C	191303	432.32
100 x 300 high	1	13.4	C	191305	432.32

Max Load 2T



Plain Grate					
TD612					
200	1	1.6	B	191385	19.23

Max Load 2T



Solid Cover					
TD613					
200	1	2.1	C	191386	84.75

Max Load 2T



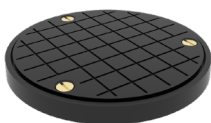
SIZE Ø mm	PACK SIZE	NOMINAL WEIGHT KG	BELOW GROUND ▼		
			^A DSC.	PRODUCT CODE	UNIT PRICE £

Hinged and Locking Grate

TD614

200	1	1.9	C	191387	304.28
-----	---	-----	---	--------	--------

Max Load 2T



Sealed Plate and Frame

TD615

200	1	2.8	B	191388	154.70
-----	---	-----	---	--------	--------

Max Load 2T



Greased Sealed Cover and Frame

TD616

200	1	1.7	C	191389	170.24
-----	---	-----	---	--------	--------

Max Load 2T



Raising Piece—Plain 225mm Ø

TD678

75 high	1	9.5	C	191363	231.77
115 high	1	11.6	C	191365	264.01
150 high	1	13.5	C	191364	307.58
225 high	1	17.0	C	191366	327.02
300 high	1	21.5	C	191367	341.25



Raising Piece with 100mm Ø Inlet

TD108

225 high	1	19.1	C	191347	313.07
----------	---	------	---	--------	--------



Raising Piece with 3 x 100mm Ø 90° Inlets

TD111

225 high	1	23.1	C	191348	832.23
----------	---	------	---	--------	--------

^ADelivery Service Category DSC (see page 6)

A =5 DAYS **B** =5-15 DAYS **C** =15-30 DAYS

04. Timesaver Drain

GULLY INLETS



SIZE Ø mm	PACK SIZE	NOMINAL WEIGHT KG	BELOW GROUND ▼	PRODUCT CODE	UNIT PRICE £
			^A DSC.		

Gully Inlet-Tapered Plain

TD684

100	1	12.9	B	191368	222.10
150	1	16.0	C	191369	250.55

Gully Inlet-Tapered with 100mm Ø Inlet

TD120

100 x 100	1	14.2	C	191352	289.07
-----------	---	------	---	--------	--------

Gully Inlet-Tapered with 3 x 100mm Ø 90° Inlets

TD123

100 x 100	1	20.3	C	191353	480.44
-----------	---	------	---	--------	--------

Trapless Gully with 87.5° Outlet

TD467

100	1	17.7	C	191403	370.73
-----	---	------	---	--------	--------

Light Grate

TD650

265	1	3.6	B	191390	43.14
-----	---	-----	---	--------	-------

Max Load 2T

Heavy Grate

TD651

265	1	8.0	B	191391	73.54
-----	---	-----	---	--------	-------

Max Load 7.5T

Hinged and Locking Grate

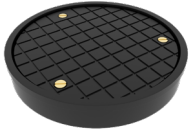
TD653

265	1	5.3	C	191360	429.68
-----	---	-----	---	--------	--------

Max Load 2T



GRATES



SIZE Ø mm	PACK SIZE	NOMINAL WEIGHT KG	BELOW GROUND ▼		
			⁴ DSC.	PRODUCT CODE	UNIT PRICE £

Sealed Plate and Frame

TD661

265	1	5.2	C	191361	142.98
-----	---	-----	---	--------	--------

Max Load 7.5T

Grease Sealed Cover and Frame

TD662

265	1	6.5	C	191362	398.14
-----	---	-----	---	--------	--------

Max Load 2T

⁴Delivery Service Category DSC (see page 6)

A =5 DAYS **B** =5-15 DAYS **C** =15-30 DAYS

04. Timesaver Drain



Deans Trap—600mm Deep with 87.5° Outlet

TD550

SIZE Ø mm	PACK SIZE	NOMINAL WEIGHT KG	BELOW GROUND ▼ +DSC.	PRODUCT CODE	UNIT PRICE £
100	1	55.4	C	191407	746.41

Galvanised Sediment Pan

1	1.9	C	191181	272.20
---	-----	---	--------	--------

Can be used with grating options TD650 to TD653 and TD661/2
Grate not included



Gully Trap—435mm Deep with 87.5° Outlet

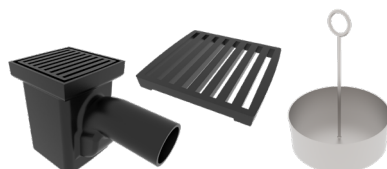
TD551

SIZE Ø mm	PACK SIZE	NOMINAL WEIGHT KG	BELOW GROUND ▼ +DSC.	PRODUCT CODE	UNIT PRICE £
100	1	30.8	B	191408	623.09

Galvanised Sediment Pan

—	1	2.0	C	191182	251.69
---	---	-----	---	--------	--------

Can be used with grating options TD650 to TD653 and TD661/2
Grate not included



Square Top Gully Trap—255 x 250 x 415mm Deep with 87.5° Outlet

TD553

SIZE Ø mm	PACK SIZE	NOMINAL WEIGHT KG	BELOW GROUND ▼ +DSC.	PRODUCT CODE	UNIT PRICE £
100	1	26.8	C	191381	513.84

Galvanised Sediment Pan

—	1	1.0	C	191183	105.97
---	---	-----	---	--------	--------

Grate to suit

—	1	3.2	C	191380	236.01
---	---	-----	---	--------	--------

Garage Gully—300 x 545mm Deep with 87.5° Outlet

TD554

SIZE Ø mm	PACK SIZE	NOMINAL WEIGHT KG	BELOW GROUND ▼ +DSC.	PRODUCT CODE	UNIT PRICE £
100	1	80.7	C	191410	1,584.31

Galvanised Sediment Pan

—	1	3.0	C	191184	347.94
---	---	-----	---	--------	--------

Grate to suit

—	1	23.0	B	191382	197.45
---	---	------	---	--------	--------





B125 Load
Rating



Used with
TD550 & TD551



SIZE Ø mm	PACK SIZE	NOMINAL WEIGHT KG	BELOW GROUND ▼		
			^A DSC.	PRODUCT CODE	UNIT PRICE £

Raising Piece for TD554

TD559

305mm Ø x 75mm high	1	12.7	C	191354	317.89
305mm Ø x 150mm high	1	20.4	C	191356	366.72
305mm Ø x 300mm high	1	37.0	C	191355	622.00

Trapless Gully Trap—300 x 615mm Deep with 87.5° Outlet

TD556

100	1	45.4	C	191409	579.26
-----	---	------	---	--------	---------------

Galvanised Sediment Pan

—	1	1.9	C	191181	272.20
---	---	-----	---	--------	---------------

Garage Gully Trap—405 x 610mm Deep with 87.5° Outlet

TD558

100	1	74.6	C	191418	1,764.61
-----	---	------	---	--------	-----------------

Galvanised Sediment Pan

—	1	3.9	C	191185	296.20
---	---	-----	---	--------	---------------

Grate to suit

—	1	23.1	C	191383	268.36
---	---	------	---	--------	---------------

Airtight Inspection Eye Cover

TD724

100	1	11.1	C	191394	302.56
150	1	14.0	C	191395	342.82

Anti-Flooding Valve

TD756

225	1	22.6	C	191421	1,189.59
-----	---	------	---	--------	-----------------

Loose Puddle Flange

TD777

100	1	3.7	B	191371	129.63
150	1	5.6	C	191372	139.23
225	1	8.1	C	191373	390.15

^ADelivery Service Category DSC (see page 6)

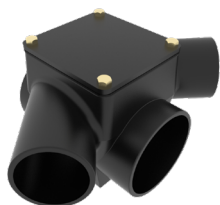
A =5 DAYS

B =5-15 DAYS

C =15-30 DAYS

04. Timesaver Drain

INSPECTION CHAMBERS



ANTI-FLOOD TRUNK VALVES

SIZE Ø mm	PACK SIZE	NOMINAL WEIGHT KG	BELOW GROUND ▼		
			^A DISC.	PRODUCT CODE	UNIT PRICE £

Inspection Chamber with one branch each side

TD14

100 x 100	1	19.6	B	191306	531.07
150 x 100	1	24.7	B	191307	688.06
150 x 150	1	42.8	C	191308	873.14
1225 x 100	1	100.0	C	191309	2,577.91
1225 x 150	1	110.0	C	191310	2,789.69
1225 x 225	1	174.0	C	191311	3,439.41

Inspection Chambers with two branches each side

TD17

100 x 100	1	40.3	B	191312	1,045.46
150 x 100	1	55.9	C	191313	1,397.43
150 x 150	1	87.2	C	191314	1,743.51
1225 x 100	1	210.0	C	191315	3,843.68
1225 x 150	1	210.8	C	191316	3,911.36
1225 x 225	1	240.0	C	191317	5,283.03

'Eureka' Anti-Flood Trunk Valve (Double Spigot)

TD750

150	1	44.0	C	191420	4,869.40
-----	---	------	---	--------	-----------------

Non Return Valve

'Eureka' Anti-Flooding Trunk Valve (Socket and Spigot)

TD750

100	1	42.2	C	191593	4,326.83
1225	1	244.1	C	191594	12,314.01
1300	1	414.3	C	191870	22,546.64

The Pam Building range of traditional drain anti-flooding traps and valves are progressively being updated.

This involves the removal of the traditional socket and the spigot bead, which will simplify installation, enabling connections to be made with standard ductile iron mechanical couplings.

'Eureka' Anti-Flooding Trunk Valve

TD752

1100	1	76.9	C	191595	5,752.02
1150	1	126.1	C	191596	7,177.22
1225	1	381.4	C	191597	15,195.15



SIZE Ø mm	PACK SIZE	NOMINAL WEIGHT KG	BELOW GROUND ▼		
			^A DSC.	PRODUCT CODE	UNIT PRICE £

Intercepting Trap fitted with Plug

TD477

100	1	32.7	C	191602	1,246.21
150	1	57.2	C	191603	1,916.53

Intercepting Trap fitted with Plug

TD479

100	1	35.7	C	191605	1,651.35
-----	---	------	---	--------	----------

Intercepting Traps

TD481

100	1	34.1	C	191607	1,401.28
150	1	57.1	C	191610	2,016.05
225	1	152.0	MTO	287094	7993.13
300	1	259.0	MTO		10,847.81

Fresh Air Inlet Left Hand (L/H) & Right Hand (R/H)

100 L/H	1	100.0	C	191608	1,480.37
100 R/H	1	100.0	C	191609	1,480.37
150 L/H	1	110.0	C	191611	2,195.15
150 R/H	1	110.0	C	191612	2,195.15
225 L/H	1	152.0	MTO	287101	8754.38
225 R/H	1	152.0	MTO	287146	8754.38
300 L/H	1	259.0	MTO		11,228.43
300 R/H	1	259.0	MTO		11,228.43

Contact our technical team for more information.

Caulking Compound

–	1	12	C	222754	487.73
---	---	----	---	--------	--------

Hardener

–	1	1.45	C	222753	157.48
---	---	------	---	--------	--------

Timesaver Touch up paint

0.4L	1	–	C	192549	39.96
------	---	---	---	--------	-------

^ADelivery Service Category DSC (see page 6)

A =5 DAYS

B =5-15 DAYS

C =15-30 DAYS

TIMESAVER SOIL

The Timesaver soil system was the first mechanically jointed cast iron system launched in 1973, for use on above-ground soil and waste, vent and rainwater installations serving commercial, public and residential buildings for over 50 years.

Cast Iron Drainage Solutions

Applications

Refurbishment

- Prestigious commercial buildings built in the late 1970's to the late 90's which are serviced by cast iron soil stacks, will most likely be Timesaver or traditional socket and spigot soil systems. If the building is to be refurbished or changes are to be made retaining some of the existing pipework—then Timesaver is the best suited to connect to the original pipework.
- Heritage external soil stacks—traditional appearance sanitary soil pipework installed on the outside of the building.
- Commercial, public and residential buildings
- Sanitary soil, vent and waste pipes
- Internal rainwater systems

Features

- 50, 75, 100 and 150mm diameter pipes and fittings
- 1.8m (6ft) double spigot pipes in 75 and 100mm
- Two piece ductile iron mechanical couplings
- Traditional 'Heritage' push-fit sockets
- 50, 75 and 100mm
- Comprehensive fittings range
- Swept branches in compliance with BS EN 12056-2:2000
- Access bends and branches
- Waste connection fittings

Benefits

- Push-fit Heritage style couplings
- To give a traditional appearance without the labour intensive caulking of socket and spigot pipework
- The most inclusive range 50-100mm
- Pipes available in 1.8m (6ft) in 75 and 100mm diameters to support this field of application
- Complete range of pipes and fittings to support refurbishment of existing Timesaver stacks in commercial buildings
- All benefits of cast iron
- A2, S1 Fire rated non-combustible system
- Excellent acoustic properties
- Minimal expansion
- Strong and robust
- Excellent environmental properties:
- Made from up to 99% recycled content
- 100% recyclable
- Long life span

Timesaver Drain & Soil

Coating

3m Pipes:

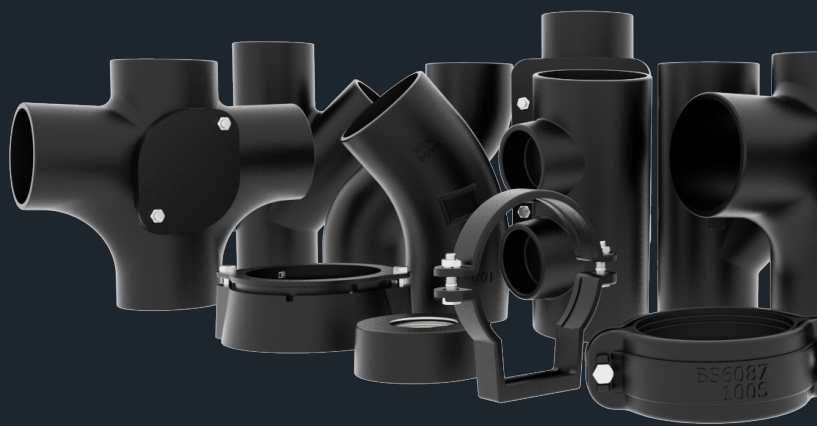
- Internally lined with an ochre two-part epoxy coating
- Externally coated in a black acrylic paint

Fittings and couplings:

- Internally and externally coated in a black water-based paint.

Overpainting

- The Timesaver coating shall accept over-coating with alkyd and water based paints normally used on metallic structures.



04. Timesaver Soil

PIPE



COUPLINGS



SIZE Ø mm	PACK SIZE	NOMINAL WEIGHT KG	ABOVE GROUND ▼		
			^A DISC.	PRODUCT CODE	UNIT PRICE £
3m Double Spigot Pipe					
GT00					
50	53	19.5	A	156366	163.02
75	50	25.0	A	156456	182.35
100	38	28.0	A	156567	220.41
150	26	43.0	A	156831	460.24
Standard Coupling (EPDM Gasket)					
GT01					
50	32	0.9	A	191691	27.32
75	24	1.1	A	191692	30.19
100	15	1.4	A	191693	39.40
150	8	3.1	A	191694	78.65
Conversion Coupling (EPDM Gasket)					
GT12					
65 x 75	1	1.3	A	191695	31.95
*70 x 75	1	1.2	A	191429	31.95
90 x 100	1	1.5	A	191696	41.18
* Connects to 70mm Ensign					
Wall Fixing Bracket					
GT48					
50	48	0.3	A	191720	18.30
75	30	0.5	A	191721	20.05
100	30	0.6	A	191722	20.54
150	16	0.8	A	191723	38.04



SIZE Ø mm	PACK SIZE	NOMINAL WEIGHT KG	ABOVE GROUND ▼			UNIT PRICE £
			^A DSC.	PRODUCT CODE		

87.5° Short Radius Plain Bends

GT02

50	1	1.3	A	191620	48.13
75	1	2.6	A	191622	54.44
100	1	4.7	A	191631	66.66
150	1	4.4	C	191634	119.00

67.5° Short Radius Plain Bend

GT02

100	1	2.2	C	191625	66.66
-----	---	-----	---	--------	--------------

45° Short Radius Plain Bends

GT02

50	1	0.5	A	191619	48.13
75	1	2.4	A	191621	54.44
100	1	3.3	A	191626	66.66
150	1	3.1	B	191632	119.00

11° Short Radius Plain Bend

GT02

100	1	1.3	C	191628	57.44
-----	---	-----	---	--------	--------------

87.5° Short Radius Bends with Rear Access

GT03

50	1	1.9	B	191636	118.65
75	1	3.6	B	191638	128.72
100	1	4.3	B	191642	140.94
150	1	6.1	C	191644	200.18

45° Short Radius Bends with Rear Access

GT03

75	1	3.9	C	191637	128.72
100	1	4.6	C	191640	140.94
150	1	8.1	C	191643	200.18

87.5° Short Radius Bend with Side Access

GT04

100	1	4.8	C	191646	140.94
-----	---	-----	---	--------	---------------

^ADelivery Service Category DSC (see page 6)

A =5 DAYS

B =5-15 DAYS

C =15-30 DAYS

04. Timesaver Soil



SIZE Ø mm	PACK SIZE	NOMINAL WEIGHT KG	ABOVE GROUND ▼			
			^A DISC.	PRODUCT CODE	UNIT PRICE £	

87.5° Long Radius Bends

GT02L

75	1	4.6	C	191623	109.23
100	1	4.7	B	191630	107.88
150	1	8.5	C	191635	235.28

45° Long Radius Bend

GT02L

100	1	6.0	C	191627	115.22
-----	---	-----	---	--------	---------------

22.5° Long Radius Bends

GT02L

100	1	1.9	C	191624	107.88
150	1	5.6	C	191633	259.62

5° Long Radius Bend

GT02L

100	1	1.4	C	191629	66.66
-----	---	-----	---	--------	--------------

87.5° Long Radius Bends with Rear Access

GT03L

75	1	5.9	C	191639	161.41
100	1	5.8	C	191641	182.30
150	1	10.7	C	191645	321.15

87.5° Long Radius Bend with Side Access

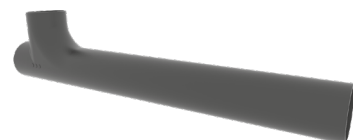
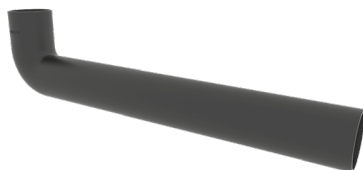
GT04L

100	1	7.5	C	191647	182.30
-----	---	-----	---	--------	---------------

87.5° Long Tail Bend 250mm Long

GT43

100	1	4.3	C	191688	86.09
-----	---	-----	---	--------	--------------



SIZE Ø mm	PACK SIZE	NOMINAL WEIGHT KG	ABOVE GROUND ▼			UNIT PRICE £
			^A DSC.	PRODUCT CODE		
87.5° Long Tail Bend 815mm Long						
GT55						
100	1	15.1	C	191689	295.12	
87.5° Long Tail Branch Swept Radius 915mm Long						
GT56						
100 x 100	1	7.0	C	191690	285.39	
87.5° Swept Radius Branches (Equal and unequal)						
GT06						
50 x 50	1	1.0	B	191649	72.44	
75 x 50	1	2.5	B	191651	82.00	
75 x 75	1	3.2	C	191653	82.00	
100 x 50	1	2.4	B	191655	103.05	
100 x 75	1	4.1	C	191657	103.05	
100 x 100	1	3.3	A	191660	103.05	
150 x 100	1	7.6	C	191662	195.37	
150 x 150	1	11.7	C	191664	255.35	
67.5° Plain Branch						
GT06						
100 x 100	1	2.5	C	191658	103.05	
45° Branches (Equal and unequal)						
GT06						
50 x 50	1	1.4	C	191648	72.44	
75 x 50	1	3.5	C	191650	92.78	
75 x 75	1	4.4	C	191652	100.07	
100 x 50	1	2.4	C	191654	103.05	
100 x 75	1	4.9	C	191656	122.53	
100 x 100	1	3.7	B	191659	103.05	
150 x 100	1	5.8	C	191661	286.64	
150 x 150	1	8.5	C	191663	255.35	

^ADelivery Service Category DSC (see page 6)

A =5 DAYS **B** =5-15 DAYS **C** =15-30 DAYS

04. Timesaver Soil



SIZE Ø mm	PACK SIZE	NOMINAL WEIGHT KG	ABOVE GROUND ▼			
			^A DSC.	PRODUCT CODE	UNIT PRICE £	

87.5° Single Branches Swept Radius with Rear Access (Equal and unequal)

GT07						
50 x 50	1	2.7	C	191665	157.79	
75 x 50	1	3.0	C	191666	157.79	
75 x 75	1	3.6	C	191668	157.79	
100 x 50	1	3.2	C	191670	177.43	
100 x 75	1	4.8	C	191672	177.43	
100 x 100	1	4.1	B	191674	177.43	
150 x 100	1	9.0	C	191676	317.41	
150 x 150	1	12.0	C	191678	377.66	

45° Single Branches with Rear Access (Equal and unequal)

GT07						
100 x 100	1	6.9	C	191673	177.43	
150 x 100	1	10.8	C	191675	343.99	

87.5° Single Branch Swept Radius with Side Access—Right Hand

GT08						
100 x 100	1	5.7	C	191679	177.43	

87.5° Single Branch Swept Radius with Side Access—Left Hand

GT09						
100 x 100	1	5.8	C	191680	177.43	

87.5° Double Branches—Swept Radius (Equal and unequal)

GT10						
75 x 75	1	4.9	C	191681	121.77	
100 x 100	1	4.3	C	191683	127.42	
150 x 100	1	10.7	C	191684	358.82	

45° Double Branch

GT10						
100 x 100	1	4.5	C	191682	127.42	



87.5° Double Branch—Swept Radius with Access

GT11

100 x 100	1	7.0	C	191685	201.79
-----------	---	-----	---	--------	--------



87.5° Corner Swept Radius Branch

GT35

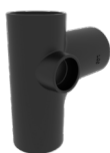
100 x 100	1	3.4	C	191687	181.17
-----------	---	-----	---	--------	--------



87.5° Branch Swept Radius with 1 x 50mm BSP Boss Back

GT06

100	1	5.4	C	191743	138.01
-----	---	-----	---	--------	--------



87.5° Branch Swept Radius with 1 x 50mm BSP Boss Right Hand

GT06

100	1	4.7	C	191745	138.01
-----	---	-----	---	--------	--------



87.5° Branch Swept Radius with 1 x 50mm BSP Boss Left Hand

GT06

100	1	4.7	C	191744	138.01
-----	---	-----	---	--------	--------



Parallel Branch

GT32

100 x 100	1	7.9	C	191686	125.72
-----------	---	-----	---	--------	--------

⁴Delivery Service Category DSC (see page 6)

A =5 DAYS

B =5-15 DAYS

C =15-30 DAYS

04. Timesaver Soil

ACCESS PIPES



SIZE Ø mm	PACK SIZE	NOMINAL WEIGHT KG	ABOVE GROUND ▼		
			^A DISC.	PRODUCT CODE	UNIT PRICE £

Access Pipes with Round Door

GT14

100	1	3.2	A	191698	121.77
150	1	6.3	C	191699	202.55

Access Pipes with Oval Door

GT14

75	1	4.1	A	191697	115.86
----	---	-----	---	--------	--------

Access Pipes with Rectangular Door

GT15

100	1	7.2	C	191700	239.89
150	1	16.4	C	191701	367.24

OFFSETS



Offsets

GT24

75 x 75	1	2.4	C	191702	71.08
75 x 115	1	3.4	C	191704	78.12
75 x 150	1	3.7	C	191703	91.79
100 x 75	1	2.2	B	191705	70.12
100 x 115	1	3.6	C	191709	98.96
100 x 150	1	4.7	C	191706	98.96
100 x 225	1	5.6	C	191707	129.84
100 x 300	1	6.8	C	191708	123.89

Diameter x Projection

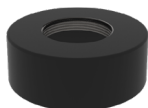
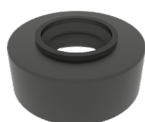
TAPER PIPES



Taper Pipes

GT28

75 x 50	1	0.6	C	191710	66.23
100 x 50	1	0.9	C	191711	84.07
100 x 75	1	0.9	B	191712	84.07
150 x 100	1	2.2	C	191713	163.64



SIZE Ø mm	PACK SIZE	NOMINAL WEIGHT KG	ABOVE GROUND ▼		
			^A DSC.	PRODUCT CODE	UNIT PRICE £

Air-Wave Vent Cowl

GT75

100	1	0.6	B	280545	15.23
-----	---	-----	---	--------	-------

Blank Ends—Plain

GT70

50	1	0.2	B	191724	16.74
75	1	0.5	B	191725	20.89
100	1	0.8	A	191726	20.25
150	1	1.9	C	191727	29.25

Blank Ends with 50mm Push-fit Connector

GT71

75	1	0.5	C	191728	41.15
100	1	0.9	C	191729	44.13
150	1	2.0	C	191731	53.04

Blank Ends D/T 2" BSP

GT71T

100	1	0.9	C	191730	49.96
-----	---	-----	---	--------	-------

Universal Connector EPDM

EF071R

50 x 56/48/40	1	0.1	B	155759	23.03
---------------	---	-----	---	--------	-------

(OD Dimension)

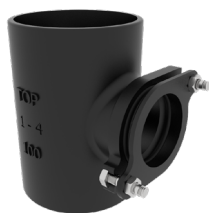
^ADelivery Service Category DSC (see page 6)

A =5 DAYS

B =5-15 DAYS

C =15-30 DAYS

04. Timesaver Soil



SIZE Ø mm	PACK SIZE	NOMINAL WEIGHT KG	ABOVE GROUND ▼			UNIT PRICE £
			^A DSC.	PRODUCT CODE		

Boss Pipes with Single Boss and 50mm Waste Compression Joints

GT106

50	1	1.1	C	192236	99.67
100	1	2.2	A	192237	119.00
150	1	3.8	C	192239	194.24

Boss Pipes with Single Boss and D/T 50mm BSP

GT106

75	1	1.7	A	191739	99.67
100	1	1.7	B	192238	122.74

Boss Pipes with 2 x 50mm Bosses Opposed and 50mm Waste Compression Joint

GT109

100	2	2.5	C	192240	153.92
150	2	4.5	C	192360	219.90

Boss Pipes with 2 x 50mm Bosses at 90° and 50mm Waste Compression Joint

GT115

100	2	2.8	C	192241	153.92
-----	---	-----	---	--------	---------------

Strap On Boss

GT133

100	1	1.2	A	192323	97.73
-----	---	-----	---	--------	--------------

Hole Saw Arbour with Drill (Accessory Tools for use with GT133)

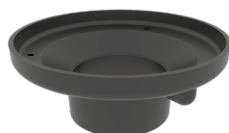
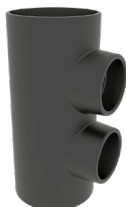
—	1	0.2	C	192327	68.91
---	---	-----	---	--------	--------------

64mm Hole Saw for Cast Iron (Accessory Tools for use with GT133)

—	1	0.2	C	192326	70.47
---	---	-----	---	--------	--------------

Pilot Drill (Accessory Tools for use with GT133)

—	1	0.03	C	192328	17.35
---	---	------	---	--------	--------------



SIZE Ø mm	PACK SIZE	NOMINAL WEIGHT KG	ABOVE GROUND ▼			UNIT PRICE £
Boss Pipe 240mm Long with 2 x 50mm Bosses In Line and Push-Fit Connection						
GT132						
100	2	3.1	C	191742	155.52	
Asphalt Roof Vent Connector						
GT73						
100	1	2.1	C	191733	115.10	
Bellmouth Gully Inlet						
GT483						
100	1	2.4	C	191737	154.65	
Grate to suit						
TD612						
—	1	1.6	B	191385	19.23	

^ADelivery Service Category DSC (see page 6)

A =5 DAYS **B** =5-15 DAYS **C** =15-30 DAYS

04. Timesaver Soil

TRAPS



ACCESSORIES



SIZE Ø mm	PACK SIZE	NOMINAL WEIGHT KG	ABOVE GROUND ▼			UNIT PRICE £
			^A DSC.	PRODUCT CODE		

'P' Trap Plain

GT34

100	1	4.4	C	191714	106.84
-----	---	-----	---	--------	--------

'P' Traps with Heel Access (*No Support Lug)

GT37

*50	1	2.0	C	191715	163.52
*75	1	6.7	C	191716	163.52
100	1	5.3	C	191717	181.21
150	1	12.0	C	191718	316.39

Ratchet Spanner

EF100

—	1	0.6	B	191201	117.89
---	---	-----	---	--------	--------

'T' Spanner (Box)

EF098

—	1	0.1	B	191200	12.88
---	---	-----	---	--------	-------

13mm Deep Socket

EF101

—	1	0.1	B	191202	29.64
---	---	-----	---	--------	-------

Timesaver Touch up paint

0.4L	1	—	C	192549	39.96
------	---	---	---	--------	-------

Timesaver Heritage System

Timesaver Heritage is a mechanically jointed cast iron soil system to BS 416-2:1990.

The range includes push-fit couplings that turn a mechanical system into one with a traditional socket appearance of yesteryear, as depicted in BS 416-1:1990 – but without the labour intensive caulked jointing method.

Supplied in a black water based primer coat the product is easy to overpaint and is the modern solution for external cast iron soil stacks, often seen on listed buildings, pre-1960's housing and properties situated in areas of conservation. The Heritage couplings are available in 50, 75, 100 and 150mm diameters that connect standard Timesaver pipe and fittings. Pipes are available in 3m lengths for 50mm and 150mm diameter (also available on 75 and 100mm) and 1.8m (6ft) lengths in 75 and 100mm diameters specifically introduced to meet this field of application.

The Heritage couplings are available in three types:

- With fixing ears to fit to the wall
- Plain without ears for connection only
- Slip version available to use when pipework already installed



Coupling Gaskets

Pam Building have introduced new gaskets for the Heritage couplings to ease installation further.



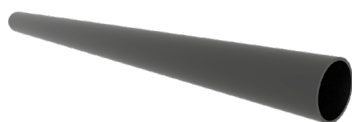
1. Apply a small amount of lubricant (i.e. lubricant product code 199037 on the lip of the rubber gaskets, both ends, to ease insertion of pipe/fittings).
2. Push joint over the end of pipe/fitting. Ensuring the central register is abutted against the spigot edge evenly. If the joint is eared, fix to wall using anti-corrosion coach screws or similar.
3. Push the second pipe or fitting into the gasket again ensuring that the spigot is abutted.

The rubber seals are factory fitted to the socket, and a suitable lubricant is recommended to ease the assembly.

⁴[Delivery Service Category DSC \(see page 6\)](#)

A =5 DAYS **B** =5-15 DAYS **C** =15-30 DAYS

04. Timesaver Heritage System



SIZE Ø mm	PACK SIZE	NOMINAL WEIGHT KG	ABOVE GROUND ▼		
			^A DSC.	PRODUCT CODE	UNIT PRICE £

Double Spigot Pipe

GT00

50 x 3m	35	19.5	A	156366	163.02
75 x 1.8m (6ft)	1	15.0	A	206854	119.20
100 x 1.8m (6ft)	1	18.5	A	192423	140.08
150 x 3m	20	43.0	A	156831	460.24



Heritage Plain Couplings—Push-fit Joint

GT05P

50	1	1.4	A	192418	43.28
75	1	1.4	A	206855	47.51
100	1	1.8	A	192421	49.74
150	1	3.6	C	266537	80.29



Heritage Couplings Eared—Push-fit Joint

GT05E

50	1	1.4	A	192417	44.60
75	1	2.1	A	206856	48.94
100	1	2.6	A	192420	54.02
150	1	3.6	C	266536	84.79



Heritage Couplings Slip—Push-fit Joint

GT05S

50	1	1.4	C	192419	56.06
75	1	1.9	C	206836	58.23
100	1	2.6	B	192422	65.49
150	1	3.6	C	266538	94.37



Gasket to suit 100mm Push-fit Joint

100	10	1.0	C	156133	7.52
-----	----	-----	---	--------	-------------



Stepped Conversion Coupler (100mm to 90mm)

GT05T

100 x 90	10	1.0	C	259732	51.44
----------	----	-----	---	--------	--------------


Bracket to Suit 100mm Eared (EC001E/GT05E) Push-fit Joint
EF053

SIZE Ø mm	PACK SIZE	NOMINAL WEIGHT KG	^A DSC.	PRODUCT CODE	UNIT PRICE £
100	1	0.2	C	192333	68.19


450mm Extended Arm Bracket
EF053A

SIZE Ø mm	PACK SIZE	NOMINAL WEIGHT KG	^A DSC.	PRODUCT CODE	UNIT PRICE £
100	1	0.2	C	192363	68.19


Cast Iron Wall Spacer Plate

SIZE Ø mm	PACK SIZE	NOMINAL WEIGHT KG	^A DSC.	PRODUCT CODE	UNIT PRICE £
50	1	0.2	C	192424	9.85
75	1	0.3	C	206838	9.85
100	1	0.4	B	192425	9.85


Lubricant 500g Tub (To suit Eared Push-fit Joints GT05E)

SIZE Ø mm	PACK SIZE	NOMINAL WEIGHT KG	^A DSC.	PRODUCT CODE	UNIT PRICE £
—	1	0.4	C	199037	32.88

^ADelivery Service Category DSC (see page 6)

A =5 DAYS

B =5-15 DAYS

C =15-30 DAYS



VORTX

Our range of roof, floor and shower drainage products designed in compliance with BS EN 1253 criteria and backed by the quality commitment of the Pam Building brand with nearly 100 years' experience in drainage.

Cast Iron Roof Outlets

Applications

- Various flat roof structures
 - Concrete
 - Timber
 - Lightweight metal structure
- Warm, cold and inverted roofs
- Parapet wall construction
 - Load bearing situations exposed to vehicular traffic i.e. car parks

Features—Cast iron bodies with spigots or BSP

- Vertical spigot roof outlets in 100mm and 150mm diameters
 - 88° and 45° angled roof outlets in 100mm
 - Flexible clamping ring
- Balcony outlets with Flat or notched gratings
- Two-way or parapet outlets
 - Smaller diameter outlets (50/70mm):
- 100mm BSP Outlets with reducing spigot adaptors VX-F501
- Raising pieces and gravel guard

Benefits

- Strong and robust performance
- Clamping Ring on the vertical and angled roof outlets can accommodate a liquid membrane of 2-3mm to full membranes with hot bitumen of 8mm
- Robust domical gratings in cast iron
- Quality coatings with proven performance for these applications
 - Black polyester for performance in sunlight
 - Sheradised gratings to protect for load bearing applications
- Optimised range of bodies
- High flow rates—tested by CRM Rainwater Drainage Consultancy
 - 150mm vertical roof outlet achieved 14.5 l/s

VORTX Roof Outlets

Coatings Grey epoxy

- Cast iron bodies

Black Polyester

- Domical gratings to suit vertical and angled roof outlets
- All clamping rings
- All raising pieces

Sheradised coating

- Flat gratings to suit vertical and angled roof outlets
- Flat and notched gratings to suit balcony outlets.

PRODUCT STANDARD: BS EN 1253

06. VortX roof and floor drainage



Vertical Roof Outlet with Flat Grate and 110mm Spigot (Suitable for car park applications)

VX-R100

SIZE	PACK SIZE	NOMINAL WEIGHT KG	FLOW RATE L/S	LOADING CLASS	^A DSC.	PRODUCT CODE	UNIT PRICE £
110mm OD Spigot	1	10.5	8.1	L15	B	241180	162.01

For 150mm use 6" BSP with spigot adapter



Vertical Roof Outlet with Dome Grate and 110mm Spigot

VX-R105

SIZE	PACK SIZE	NOMINAL WEIGHT KG	FLOW RATE L/S	LOADING CLASS	^A DSC.	PRODUCT CODE	UNIT PRICE £
110mm OD Spigot	1	8.9	10.7	K3	B	241181	162.01

For 150mm use 6" BSP with spigot adapter



Vertical Roof Outlets with Flat Grate (Suitable for car park applications)

VX-R150

SIZE	PACK SIZE	NOMINAL WEIGHT KG	FLOW RATE L/S	LOADING CLASS	^A DSC.	PRODUCT CODE	UNIT PRICE £
4" BSP	1	10.5	8.1	L15	B	241182	171.28
6" BSP	1	14.9	14.2	L15	C	247428	333.23

For smaller diameter outlets 70mm and 50mm call Technical Department on 01952 262529



Vertical Roof Outlets with Dome Grate

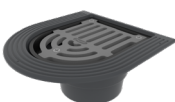
VX-R155

SIZE	PACK SIZE	NOMINAL WEIGHT KG	FLOW RATE L/S	LOADING CLASS	^A DSC.	PRODUCT CODE	UNIT PRICE £
4" BSP	1	8.9	10.7	K3	B	241183	171.28
6" BSP	1	12.4	14.5	K3	C	247418	333.23

Balcony Roof Outlet with Flat Grate and 110mm Spigot

VX-R300

SIZE	PACK SIZE	NOMINAL WEIGHT KG	FLOW RATE L/S	LOADING CLASS	^A DSC.	PRODUCT CODE	UNIT PRICE £
110mm OD Spigot	1	6.3	4.99	K3	B	241184	138.91



Two Way Outlet with Flat Steel Grate

VX-R501

SIZE	PACK SIZE	NOMINAL WEIGHT KG	FLOW RATE L/S	LOADING CLASS	^A DSC.	PRODUCT CODE	UNIT PRICE £
4" BSP	1	6.2	1.09	K3	C	247964	134.23

For smaller diameter outlets 70mm and 50mm use spigot adapter VX-500/VX-F501



Raising Piece to suit 100mm and 150mm Vertical Outlets

VX-R710

SIZE	PACK SIZE	NOMINAL WEIGHT KG	FLOW RATE L/S	LOADING CLASS	^A DSC.	PRODUCT CODE	UNIT PRICE £
285 x 75mm high	1	2.5	—	—	B	241193	64.82



Raising Piece to suit Balcony Outlets

VX-R720

SIZE	PACK SIZE	NOMINAL WEIGHT KG	FLOW RATE L/S	LOADING CLASS	^A DSC.	PRODUCT CODE	UNIT PRICE £
50mm effective high	1	0.9	—	—	C	241194	64.82





SIZE	PACK SIZE	NOMINAL WEIGHT KG	FLOW RATE L/S	LOADING CLASS	^A DSC.	PRODUCT CODE	UNIT PRICE £
------	-----------	-------------------	---------------	---------------	-------------------	--------------	--------------

BSP Spigot Adaptors

Length							VX-F500	
4" BSP to 110mm	215mm	1	2.7	—	—	A	227131	28.45
6" BSP to 160mm	300mm	1	4.6	—	—	C	247429	104.86
**2" BSP to 56mm	215mm	1	1.1	—	—	A	234207	18.03
4" BSP to 100mm	450mm	1	5.4	—	—	A	270322	112.44

**Used with reducing bushes



BSP Adaptors

Concentric

VX-F501								
300 x 80mm to 4"	1	2.8	—	—	A	256615	41.32	
300 x 60mm to 4"	1	2.3	—	—	A	256613	34.16	



Domical Grate- to suit Vertical Outlets

1	2.4	—	—	C	247775	78.70
---	-----	---	---	---	--------	-------



Flat Grates—to suit Vertical Outlets

100mm	1	4.0	—	—	C	247776	65.74
150mm	1	4.8	—	—	C	247777	65.74



Stainless Steel Gravel Guard & Strainers—to suit Vertical Outlets

Gravel Guard

VX-R730							
290 x 155mm	1	0.2	—	—	C	247752	102.75

Strainers

VX-R740							
290mm x 300mm	1	3.3	—	—	C	253154	199.07
290mm x 200mm	1	2.8	—	—	C	253155	189.37



Clamping Rings—to suit Vertical Outlets

100mm	1	1.3	—	—	C	247778	54.64
150mm	1	3.3	—	—	C	247779	54.64

^ADelivery Service Category DSC (see page 6)

A =5 DAYS **B** =5-15 DAYS **C** =15-30 DAYS

VORTX

Aluminium Roof
Outlets



THIS NEW RANGE

embodies our motto

Safe
& forever
circular

Our aluminium roof outlets provide a lightweight, robust and corrosion-resistant option with excellent flow performance to BS EN 12056.

The VortX aluminium roof outlets are manufactured in LM6 Aluminium Silicon casting alloy to BS EN 1706:2010, to suit most roof finishes.

- Our range can be fitted in almost any type of roof construction, with a comprehensive selection of accessories including threaded adaptors and extending rings.
- The clamping ring ensures that the waterproof membrane is securely fitted, creating a strong and reliable seal.
- Installation is quick and easy and thanks to the simplicity of the solution no maintenance is required throughout its 40+ year life.
- We have designed the range with circularity in mind and as such our aluminium roof outlets are made from 80% recycled material and are 100% recyclable at end of life.
- Thanks to the corrosion-resistant properties of aluminium all products in this new range have a life expectancy of over 40+ years.

PRODUCT STANDARDS: A2 FIRE RATED, BS EN 12056 & BS EN 1706:2010



SIZE	PACK SIZE	NOMINAL WEIGHT KG	FLOW RATE L/S	LOADING CLASS	^A DSC.	PRODUCT CODE	UNIT PRICE £
Vertical Spigot Outlet with Dome Grate							
VX-AV2-D							
300 x 260h (50Ø)	1	2.48	1.7	A15	B	286059	147.26



Vertical Spigot Outlet with Flat Grate							
VX-AV2-F							
300 x 200h (50Ø)	1	2.80	1.7	A15	B	286058	147.26



Vertical Threaded BSP Outlet with Dome Grate							
VX-AV2T-D							
300 x 186h (50Ø)	1	2.34	1.7	A15	B	286054	150.49



Vertical Threaded BSP Outlet with Flat Grate							
VX-AV2T-F							
300 x 124h (50Ø)	1	2.50	1.7	A15	B	286090	150.49



Vertical Spigot Outlet with Dome Grate							
VX-AV3-D							
300 x 260h (75Ø)	1	2.38	5.0	A15	B	286063	192.95



Vertical Spigot Outlet with Flat Grate							
VX-AV3-F							
300 x 200h (75Ø)	1	2.68	5.0	A15	B	286062	195.41

^ADelivery Service Category DSC (see page 6)

A =5 DAYS **B** =5-15 DAYS **C** =15-30 DAYS

06. VortX roof and floor drainage

NEW



Vertical Threaded BSP Outlet with Dome Grate

VX-AV3T-D

SIZE	PACK SIZE	NOMINAL WEIGHT KG	FLOW RATE L/S	LOADING CLASS	^A DSC.	PRODUCT CODE	UNIT PRICE £
300 x 186 (75Ø)	1	2.18	5.0	A15	B	286061	192.95

NEW



Vertical Threaded BSP Outlet with Flat Grate

VX-AV3T-F

SIZE	PACK SIZE	NOMINAL WEIGHT KG	FLOW RATE L/S	LOADING CLASS	^A DSC.	PRODUCT CODE	UNIT PRICE £
300 x 124h (75Ø)	1	2.50	5.0	A15	B	286060	195.41

NEW



Vertical Spigot Outlet with Dome Grate

VX-AV4-D

SIZE	PACK SIZE	NOMINAL WEIGHT KG	FLOW RATE L/S	LOADING CLASS	^A DSC.	PRODUCT CODE	UNIT PRICE £
382 x 304h (100Ø)	1	3.00	10.7	A15	B	286067	251.31

NEW



Vertical Spigot Outlet with Flat Grate

VX-AV4-F

SIZE	PACK SIZE	NOMINAL WEIGHT KG	FLOW RATE L/S	LOADING CLASS	^A DSC.	PRODUCT CODE	UNIT PRICE £
382 x 245h (100Ø)	1	3.58	10.7	A15	B	286066	274.07

NEW



Vertical Threaded BSP Outlet with Dome Grate

VX-AV4T-D

SIZE	PACK SIZE	NOMINAL WEIGHT KG	FLOW RATE L/S	LOADING CLASS	^A DSC.	PRODUCT CODE	UNIT PRICE £
382 x 195h (100Ø)	1	3.00	10.7	A15	B	286065	274.59

NEW



Vertical Threaded BSP Outlet with Flat Grate

VX-AV4T-F

SIZE	PACK SIZE	NOMINAL WEIGHT KG	FLOW RATE L/S	LOADING CLASS	^A DSC.	PRODUCT CODE	UNIT PRICE £
382 x 136h (100Ø)	1	3.58	10.7	A15	B	286064	293.58



Vertical Spigot Outlet with Dome Grate

VX-AV6-D

SIZE	PACK SIZE	NOMINAL WEIGHT KG	FLOW RATE L/S	LOADING CLASS	^A DSC.	PRODUCT CODE	UNIT PRICE £
382 x 300h (150Ø)	1	3.52	15.1	A15	B	286071	321.94



Vertical Spigot Outlet with Flat Grate

VX-AV6-F

SIZE	PACK SIZE	NOMINAL WEIGHT KG	FLOW RATE L/S	LOADING CLASS	^A DSC.	PRODUCT CODE	UNIT PRICE £
382 x 245h (150Ø)	1	4.12	16.4	A15	B	286070	340.90



Vertical Threaded BSP Outlet with Dome Grate

VX-AV6T-D

SIZE	PACK SIZE	NOMINAL WEIGHT KG	FLOW RATE L/S	LOADING CLASS	^A DSC.	PRODUCT CODE	UNIT PRICE £
382 x 170h (150Ø)	1	3.08	15.2	A15	B	286069	328.87



Vertical Threaded BSP Outlet with Flat Grate

VX-AV6T-F

SIZE	PACK SIZE	NOMINAL WEIGHT KG	FLOW RATE L/S	LOADING CLASS	^A DSC.	PRODUCT CODE	UNIT PRICE £
382 x 115h (150Ø)	1	3.70	15.9	A15	B	286068	347.83



Balcony Outlet with Flat Grate

VX-AB2-F

SIZE	PACK SIZE	NOMINAL WEIGHT KG	FLOW RATE L/S	LOADING CLASS	^A DSC.	PRODUCT CODE	UNIT PRICE £
265 x 230w x 229h (50Ø)	1	2.71	1.7	A15	B	286081	174.39



Balcony Outlet with Flat Grate

VX-AB3-F

SIZE	PACK SIZE	NOMINAL WEIGHT KG	FLOW RATE L/S	LOADING CLASS	^A DSC.	PRODUCT CODE	UNIT PRICE £
265 x 230w x 229h (75Ø)	1	2.74	5.0	A15	B	286080	200.48



Balcony Outlet with Flat Grate

VX-AB4-F

SIZE	PACK SIZE	NOMINAL WEIGHT KG	FLOW RATE L/S	LOADING CLASS	^A DSC.	PRODUCT CODE	UNIT PRICE £
265 x 230w x 229h (100Ø)	1	2.78	7.55	A15	B	286079	246.25

^ADelivery Service Category DSC (see page 6)
A =5 DAYS
B =5-15 DAYS
C =15-30 DAYS

06. VortX roof and floor drainage

ALUMINIUM TWO WAY OUTLETS



NEW

Two-Way Outlet with Flat Grate

VX-ATW3-F

SIZE	PACK SIZE	NOMINAL WEIGHT KG	FLOW RATE L/S	LOADING CLASS	^A DSC.	PRODUCT CODE	UNIT PRICE £
214 x 254w x 192h (75Ø)	1	2.14	4.13	A15	B	286083	252.76



NEW

Two-Way Outlet with Flat Grate

VX-ATW4-F

SIZE	PACK SIZE	NOMINAL WEIGHT KG	FLOW RATE L/S	LOADING CLASS	^A DSC.	PRODUCT CODE	UNIT PRICE £
214 x 254w x 192h (100Ø)	1	2.24	7.83	A15	B	286082	265.79

ALUMINIUM ACCESSORIES



NEW

Vertical Outlet Extension Ring

VX-AER2/3

SIZE	PACK SIZE	NOMINAL WEIGHT KG	FLOW RATE L/S	LOADING CLASS	^A DSC.	PRODUCT CODE	UNIT PRICE £
230 x 125h (50/75Ø)	1	1.40	N/A	A15	B	286078	81.28



NEW

Vertical Outlet Extension Ring

VX-AER4/6

SIZE	PACK SIZE	NOMINAL WEIGHT KG	FLOW RATE L/S	LOADING CLASS	^A DSC.	PRODUCT CODE	UNIT PRICE £
230 x 125h (100/150Ø)	1	1.35	N/A	A15	B	286077	92.96



NEW

Balcony Outlet Extension Ring

VX-AER-B

SIZE	PACK SIZE	NOMINAL WEIGHT KG	FLOW RATE L/S	LOADING CLASS	^A DSC.	PRODUCT CODE	UNIT PRICE £
208 x 158w x 112h	1	1.35	N/A	A15	B	286076	107.55

NEW



Threaded Adaptor x 300mm

VX-ADP2-300

SIZE	PACK SIZE	NOMINAL WEIGHT KG	FLOW RATE L/S	LOADING CLASS	^A DSC.	PRODUCT CODE	UNIT PRICE £
58 x 300h (50Ø)	1	0.81	N/A	A15	B	286075	34.18

NEW



Threaded Adaptor x 300mm

VX-ADP3-300

SIZE	PACK SIZE	NOMINAL WEIGHT KG	FLOW RATE L/S	LOADING CLASS	^A DSC.	PRODUCT CODE	UNIT PRICE £
83 x 300h (75Ø)	1	1.19	N/A	A15	B	286074	44.16

NEW



Threaded Adaptor x 300mm

VX-ADP4-300

SIZE	PACK SIZE	NOMINAL WEIGHT KG	FLOW RATE L/S	LOADING CLASS	^A DSC.	PRODUCT CODE	UNIT PRICE £
110 x 300h (100Ø)	1	1.77	N/A	A15	B	286073	58.44

NEW



Threaded Adaptor x 300mm

VX-ADP6-300

SIZE	PACK SIZE	NOMINAL WEIGHT KG	FLOW RATE L/S	LOADING CLASS	^A DSC.	PRODUCT CODE	UNIT PRICE £
158 x 300h (150Ø)	1	2.54	N/A	A15	B	286072	98.77

Note – Other lengths are available if required – price and availability upon request – contact the technical team

^ADelivery Service Category DSC (see page 6)

A =5 DAYS

B =5-15 DAYS

C =15-30 DAYS

The background of the page features a dark, monochromatic photograph of several VortX floor drainage units. These units are cylindrical with a flared top rim and a central drain opening. They are arranged in a cluster, with some units in the foreground and others slightly behind, creating a sense of depth. The lighting is soft, highlighting the metallic texture of the components.

VORTX

Pam Building VortX
offers a simplified
range of floor drainage
products for most
applications

Floor Drainage

Applications

- Suitable for all commercial and industrial applications
- Grates available for tiled, marble, terrazzo, concrete, vinyl and resin floors.
- Gratings Load class options as depicted in BS EN 1253:
 - K3—Pedestrian areas and wet room applications such as shower areas, bathrooms, swimming baths, leisure centres, balconies, retail areas, hotels, offices, schools, public buildings, hospitals, prisons, terraces and roof gardens
 - L15—Areas of light vehicular traffic such as cycle ways and domestic drives
 - M125—Car parks

Features

- Simplified range of trapped and untrapped cast iron gullies
- Lighter weight P-Trap and S-Trap gullies
- New cast iron modular gullies with spigot/BSP outlets that configure to:
 - Deep sumps/bell traps/brewery traps
 - Gratings and rodding eyes:
 - Stainless steel
 - Cast iron
 - New Anti-Ligature stainless-steel gratings
- Simplified full range of accessories
- Security screws
- Cast iron raising pieces
- Spigot adaptors for various pipe diameter connections

Benefits

- Simplified range easy to navigate and specify
- S-trap offers space saving—only requiring a 180mm core hole
 - Saving cost
- Cast iron gullies are robust and are grey epoxy coated
- Spigot adaptors to connect to most pipe sizes and materials
- New modular deep sump gullies that can configure to bell and brewery type traps.



PRODUCT STANDARD: BS EN 1253

06. VortX roof and floor drainage

SIZE	PACK SIZE	NOMINAL WEIGHT KG	FLOW RATE L/S	LOADING CLASS	^A DSC.	PRODUCT CODE	UNIT PRICE £
------	-----------	-------------------	---------------	---------------	-------------------	--------------	--------------

150mm Circular Gratings in Stainless Steel

VX-F020

S	150mm NPSM	1	1.5	2.0	K3	A	227050	166.09
S	150mm Direct Fit	1	1.5	2.0	K3	A	233407	166.09

150mm Square Gratings in Stainless Steel

VX-F040

S	150mm NPSM	1	1.2	2.2	K3	A	227102	166.09
S	150mm Direct Fit	1	1.2	2.2	K3	A	233421	166.09

200mm Square Gratings in Stainless Steel

VX-F060

S	200mm NPSM	1	2.8	3.0	K3	A	227104	264.62
S	200mm Direct Fit	1	2.8	3.0	K3	A	233424	264.62

150mm Circular Gratings in Stainless Steel for Vinyl Floors

VX-F080

S	150mm NPSM	1	2.1	1.85	K3	A	227112	236.79
S	150mm Direct Fit	1	2.1	1.85	K3	A	233435	236.79

150mm Circular Gratings in Cast Iron

VX-F090

	150mm NPSM	1	2.9	1.5	L15	C	247771	87.14
	150mm Direct Fit	1	3.0	1.5	L15	C	247773	87.14

150mm Square Gratings in Cast Iron

VX-F100

	150mm NPSM	1	2.9	1.5	L15	C	247772	93.51
	150mm Direct Fit	1	3.0	1.5	L15	C	247774	93.51

150mm Circular Anti-ligature Grating (NPSM Threaded)

VX-F021

	150mm NPSM	1	1.5	1.1	K3	A	250676	208.35
--	------------	---	-----	-----	----	---	--------	--------

150 x 150mm Square Anti-ligature Grating (NPSM Threaded)

VX-F041

	150mm NPSM	1	1.6	1.1	K3	A	250677	208.35
--	------------	---	-----	-----	----	---	--------	--------

	SIZE	PACK SIZE	NOMINAL WEIGHT KG	FLOW RATE L/S	LOADING CLASS	^A DSC.	PRODUCT CODE	UNIT PRICE £
170mm Circular Anti-ligature Grating (NPSM Threaded)								
							VX-F081	
	170mm NPSM	1	2.1	1.1	K3	A	250678	239.80
150mm Circular Rodding Eyes in Stainless Steel								
							VX-F025	
S	150mm Direct Fit	1	1.6	N/A	K3	A	233427	207.85
150mm Square Rodding Eyes in Stainless Steel								
							VX-F045	
S	150mm NPSM	1	1.3	N/A	K3	A	227108	207.85
								
S	150mm Direct Fit	1	1.3	N/A	K3	A	233430	207.85
200mm Square Rodding Eyes in Stainless Steel								
							VX-F065	
S	200mm Direct Fit	1	3.1	N/A	K3	A	233433	264.62
150mm Circular Rodding Eyes in Stainless Steel for Vinyl Floors								
							VX-F085	
S	150mm Direct Fit	1	2.2	N/A	K3	A	233439	251.08
ABS Airtight Bung (Can be fitted to Rodding Eyes to make a double seal)								
							VX-F430	
	105mm	1	0.1	N/A	—	C	241195	6.65
Screws & Allen Key (Bag of 4 Security Screws and Allen Key)								
							VX-F420	
	—	1	0.1	—	—	C	233455	7.58

S = Standard Finish

^ADelivery Service Category DSC (see page 6)
A = 5 DAYS
B = 5-15 DAYS
C = 15-30 DAYS

06. VortX roof and floor drainage



Untrapped Floor Gullies with Medium Sump (110mm)

VX-F200

SIZE	PACK SIZE	NOMINAL WEIGHT KG	FLOW RATE L/S	LOADING CLASS	^A DSC	PRODUCT CODE	UNIT PRICE £
110mm	1	2.4	—	—	A	227119	30.85



Untrapped Floor Gullies with Medium Sump (4" BSP)

VX-F200

SIZE	PACK SIZE	NOMINAL WEIGHT KG	FLOW RATE L/S	LOADING CLASS	^A DSC	PRODUCT CODE	UNIT PRICE £
4" BSP	1	2.6	—	—	A	227118	37.89



Untrapped Floor Gully with Sumpless Body

VX-F210

SIZE	PACK SIZE	NOMINAL WEIGHT KG	FLOW RATE L/S	LOADING CLASS	^A DSC	PRODUCT CODE	UNIT PRICE £
110mm NPSM	1	1.6	—	—	A	227120	36.00



P Trap Floor Gully

VX-F220

SIZE	PACK SIZE	NOMINAL WEIGHT KG	FLOW RATE L/S	LOADING CLASS	^A DSC	PRODUCT CODE	UNIT PRICE £
110mm	1	6.4	—	—	A	227129	97.75



S Trap Floor Gully

VX-F230

SIZE	PACK SIZE	NOMINAL WEIGHT KG	FLOW RATE L/S	LOADING CLASS	^A DSC	PRODUCT CODE	UNIT PRICE £
110mm	1	6.4	—	—	A	227130	97.75



Clamping Ring to suit Floor Gullies

VX-F205

SIZE	PACK SIZE	NOMINAL WEIGHT KG	FLOW RATE L/S	LOADING CLASS	^A DSC	PRODUCT CODE	UNIT PRICE £
205mm	1	0.7	—	—	A	233440	13.66



Raising Pieces

VX-F350

SIZE	PACK SIZE	NOMINAL WEIGHT KG	FLOW RATE L/S	LOADING CLASS	^A DSC	PRODUCT CODE	UNIT PRICE £
20-40mm	1	0.8	—	—	C	227121	36.61
40-95mm	1	1.5	—	—	C	227122	45.86
95-140mm	1	2.0	—	—	C	227123	56.74

Please Note: all parts on this page will be make to order

SIZE	PACK SIZE	NOMINAL WEIGHT KG	FLOW RATE L/S	LOADING CLASS	^A DSC.	PRODUCT CODE	UNIT PRICE £
------	-----------	-------------------	---------------	---------------	-------------------	--------------	--------------

Cast Iron Deep Sump Body with 3 x 2" BSP Inlets—Epoxy-coated

VX-F215



110mm OD Spigot Outlet	1	12.3	—	—	C	260384	166.22
4" BSP Outlet	1	11.5	—	—	C	260385	185.03
6" BSP Outlet	1	10.1	—	—	C	260386	196.47

Body can also include 4" BSP inlet upon request

Bell Trap Body with 3 x 2" BSP Inlets and 4" NPSM reducing collar—Epoxy-coated Cast Iron

VX-F250



110mm OD Spigot Outlet	1	12.3	—	—	C	260387	305.95
------------------------	---	------	---	---	---	--------	---------------

Can be fitted with Cast Iron/Stainless Steel Gratings

Body can also include 4" BSP inlet upon request

Brewery Trap 3 x 2" BSP Inlets with 300mm Square Cast Iron Grating—Body Epoxy-coated Cast Iron/Grating Sheradised

VX-F240



110mm OD Spigot Outlet	1	29.6	—	—	C	260389	666.05
------------------------	---	------	---	---	---	--------	---------------

Body can also include 4" BSP inlet upon request

Brewery Trap 3 x 2" BSP Inlets with 300mm Square Cast Iron Grating—Body Epoxy-coated Cast Iron/Grating Sheradised

VX-F244



4" BSP Outlet	1	28.6	—	—	C	260390	685.66
---------------	---	------	---	---	---	--------	---------------

Body can also include 4" BSP inlet upon request

300 x 300mm Square Grating in Ductile Iron—Sheradised to suit VXF215/250

VX-F130



4" NPSM	1	14.5	—	M125	C	260393	167.08
---------	---	------	---	------	---	--------	---------------

300 x 300mm Square Grating in Ductile Iron—Sheradised to suit Bell Trap VX-F250

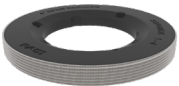
VX-F130



100mm Direct Fit	1	14.4	—	—	C	260396	163.07
------------------	---	------	---	---	---	--------	---------------

Reducing Ring to suit Bell Trap and Deep Sump—Epoxy-coated Cast Iron

VX-F206



4" NPSM	1	0.5	—	—	C	260397	58.59
---------	---	-----	---	---	---	--------	--------------

^ADelivery Service Category DSC (see page 6)

A =5 DAYS

B =5-15 DAYS

C =15-30 DAYS



VORTX SHOWER DRAINS

Robust cast iron shower gullies in 100mm and 50mm with a range of stainless-steel gratings to suit most types of solid or suspended floor construction.

Applications

- Commercial, public and residential buildings
- Solid or suspended floors
- Tiled or flexible sheet floor membranes
- Anti-ligature gratings for incarceration areas i.e. prisons, etc.

Features

- Vertical and horizontal shower gullies 100mm and 50mm
- Cast iron grey epoxy coated

- 50mm removable bottle trap with unique twist and lock mechanism
- Stainless-steel gratings

Benefits

- Robust cast iron solutions
- Unique twist and lock removable trap
- Available in kit format
- Cost effective with other materials
- Simplified range

Shower Drain Kits

VortX shower drain kits consist of a cast iron body with vertical or horizontal outlet, a removable bottle trap and a stainless-steel grating supplied all together in a box.

Horizontal shower drain kits

Our Shower Drain Kits are made to give you everything you need in one box. When ordering one of the kit codes you will get the grating of your choice (A), a bottle trap (B) and either a vertical or horizontal drain (C).



SIZE	PACK SIZE	NOMINAL WEIGHT KG	FLOW RATE L/S	LOADING CLASS	^A DSC.	PRODUCT CODE	UNIT PRICE £
------	-----------	-------------------	---------------	---------------	-------------------	--------------	--------------

Shower Drain Kit with 60mm Cast Iron Horizontal Shower Drain – Supplied complete in a box



Kit includes:

VX-S261 60mm Shower Drain and VX-F400 Bottle Trap plus a Stainless Steel Grating to suit listed below

TO ORDER THE WHOLE KIT
PLEASE USE THE CODE LISTED NEXT
TO THE REQUIRED GRATING

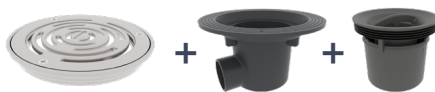
Shower Drain Kit 60mm Cast Iron Horizontal Shower Drain with VX-S270 150mm Circular Stainless Steel Grating for Vinyl Floor

S	150mm	1	3.4	0.9	K3	C	239748	159.30
---	-------	---	-----	-----	----	---	--------	--------



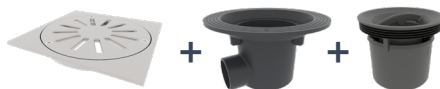
Shower Drain Kit 60mm Cast Iron Horizontal Shower Drain with VX-S270 150mm Decorative Stainless Steel Grating for Vinyl Floor

S	150mm	1	3.3	0.9	K3	C	239752	159.30
---	-------	---	-----	-----	----	---	--------	--------



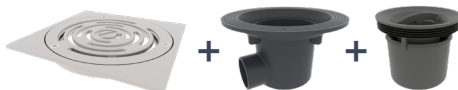
Shower Drain Kit 60mm Cast Iron Horizontal Shower Drain with VX-S271 150mm Square Stainless Steel Grating for Tiled floor

S	150mm	1	3.6	0.9	K3	C	239750	162.28
---	-------	---	-----	-----	----	---	--------	--------



Shower Drain Kit 60mm Cast Iron Horizontal Shower Drain with VX-S271 150mm Decorative Square Stainless Steel Grating for Tiled Floor

S	150mm	1	3.5	0.9	K3	C	239754	162.28
---	-------	---	-----	-----	----	---	--------	--------



S = Standard Finish

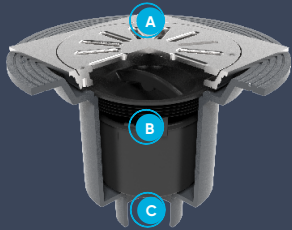
^ADelivery Service Category DSC (see page 6)

A = 5 DAYS B = 5-15 DAYS C = 15-30 DAYS

06. VortX roof and floor drainage

Vertical shower drain kits

Our Shower Drain Kits are made to give you everything you need in one box. When ordering one of the kit codes you will get the grating of your choice (A), a bottle trap (B) and either a vertical or horizontal drain (C).



SIZE	PACK SIZE	NOMINAL WEIGHT KG	FLOW RATE L/S	LOADING CLASS	^A DSC.	PRODUCT CODE	UNIT PRICE £
------	-----------	-------------------	---------------	---------------	-------------------	--------------	--------------

Shower Drain Kit with 60mm Cast Iron Vertical Shower Drain –Supplied complete in a box



Kit includes:
VX-S260 60mm Shower Drain and VX-F400 Bottle Trap
plus a Stainless Steel Grating to suit listed below

TO ORDER THE WHOLE KIT
PLEASE USE THE CODE LISTED NEXT
TO THE REQUIRED GRATING

Shower Drain Kit 60mm Cast Iron Vertical Shower Drain with VX-S270 150mm Circular Stainless Steel Grating for Vinyl Floor

S	150mm	1	3.3	1.1	K3	C	239740	159.30
---	-------	---	-----	-----	----	---	--------	--------



Shower Drain Kit 60mm Cast Iron Vertical Shower Drain with VX-S270 150mm Decorative Stainless Steel Grating for Vinyl Floor

S	150mm	1	3.3	1.1	K3	C	239744	159.30
---	-------	---	-----	-----	----	---	--------	--------



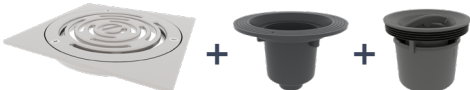
Shower Drain Kit 60mm Cast Iron Vertical Shower Drain with VX-S271 150mm Square Stainless Steel Grating for Tiled floor

S	150mm	1	3.5	1.1	K3	C	239742	162.28
---	-------	---	-----	-----	----	---	--------	--------



Shower Drain Kit 60mm Cast Iron Vertical Shower Drain with VX-S271 150mm Decorative Square Stainless Steel Grating for Tiled floor

S	150mm	1	3.4	1.1	K3	C	239746	162.28
---	-------	---	-----	-----	----	---	--------	--------



S = Standard Finish

Please note that the 60mm drain will also connect to a 110mm pipe

	SIZE	PACK SIZE	NOMINAL WEIGHT KG	FLOW RATE L/S	LOADING CLASS	^A DSC.	PRODUCT CODE	UNIT PRICE £
Cast Iron Shower Drains (Body only) Vertical								
							VX-S260	
	60mm OD	1	2.4	—	—	A	227126	47.45
Please note: this will also connect to 110mm								
Cast Iron Shower Drain (Body only) Horizontal								
							VX-S261	
	60mm OD	1	2.5	—	—	A	227127	47.45
Removable Bottle Trap ABS								
							VX-F400	
	50mm Trap	1	0.1	—	—	C	227128	36.04
Stainless Steel Filter Basket to suit Shower Drains								
							VX-F410	
	110mm	1	0.2	—	—	C	227138	39.87
Circular Stainless Steel Gratings to suit Shower Drains for Vinyl Floor								
				Horiz/Vert Drain				
 S	150mm	1	0.8	0.9/1.1	K3	A	227132	75.81
Circular Decorative Stainless Steel Gratings to suit Shower Drains for Vinyl Floor								
				Horiz/Vert Drain				
 S	150mm	1	0.7	0.9/1.1	K3	A	227133	75.81
Square Steel Gratings to suit Shower Drains for Tiled Floor								
				Horiz/Vert Drain				
 S	150mm	1	1.0	0.9/1.1	K3	A	227134	78.75
Decorative Square Steel Gratings to suit Shower Drains for Tiled Floor								
				Horiz/Vert Drain				
 S	150mm	1	0.9	0.9/1.1	K3	A	227135	78.75
Anti ligature circular grating to suit shower drains for vinyl floor								
				Horiz/Vert Drain				
 S	150mm	1	0.8	1.1	K3	A	250679	90.75
Anti ligature Square decorative grating for tiled floor								
				Horiz/Vert Drain				
 S	150mm	1	1.0	1.1	K3	A	250680	93.60



Pam Building

At its foundry in Telford, Shropshire, the birthplace of cast iron production in the UK, Pam Building remains at the forefront of the design and manufacturing of high-performing cast iron above and below ground drainage systems for commercial, public and residential buildings. Pam Building in France manufactures the 3m pipes and the Telford site manufactures the fittings and ductile iron couplings and brackets to complete the ranges for all Pam Building's worldwide markets.

We are pleased to announce that our Ensign and EEZI-FIT range is now UKCA marked. By using the UKCA mark we declare that our product conforms to BS EN 877:1999+A1:2006, AVCP system 3 for the reaction of fire to the product and system 4 for all other characteristics. These tests have been conducted in a UKAS accredited lab in the UK. Our declaration of conformity and technical documentation is available on our website. Our Ensign Agilium® range is manufactured to BS EN 877:1999+A1:2021 which is not currently a harmonised standard, therefore has no requirements for UKCA or CE marking under the construction products regulations.



**Proud of our UK
Manufacturing Heritage**

System, Product and Sustainability Accreditation

BS EN ISO 50001:2018	For Energy Management Systems. Programme of Continual Improvement exceeding targets for energy reduction Certificate Number:
BS EN ISO 9001:2015	Quality Management Systems Certificate Number:
BS EN ISO 14001:2015	Environmental Management Systems Certificate Number:
BS EN ISO 45001:2018	Occupational Health & Safety Management System Certificate Number:
BES 6001	Responsible Sourcing of Construction Materials Certificate Number:
Carbon Reduce Certification	Carbon Reduce Certified Certificate Number: Meets the requirements of Carbon Reduce certification having measured its greenhouse gas emissions in accordance with ISO 14064 Part 1 2018 and is committed to managing and reducing its emissions in respect of its operational activities.

Product Certification

BS EN 877:2021	Ensign Agilium® Cast iron pipes and fittings, their joints and accessories for the evacuation of water from buildings. Requirements, test methods and quality assurance. Certificate Number: KM51733
BS EN 877:1999+A1:2006	Ensign/EEZI-FIT Cast iron pipes and fittings, their joints and accessories for the evacuation of water from buildings. Requirements, test methods and quality assurance. Certificate Number: KM51733



Cast Iron
Pipes and
Fittings
KITEMARK™

ISO 9001
Quality
Management
Systems
CERTIFIED

ISO 14001
Environmental
Management
CERTIFIED

ISO 45001
Occupational
Health and Safety
Management
CERTIFIED

ISO 50001
Energy
Management
CERTIFIED

BES 6001
Responsible
Sourcing of
Construction Products
CERTIFIED



Click or scan to visit our



Website



LinkedIn



Youtube

To see how you can
SAVE 60%
TIME ON SITE
please contact your
Sales Manager or our
Technical Team

Visit our new website

**For further information please
visit our new website at**

 **www.pambuilding.co.uk**

and find...

- **Links for technical help**
- **Quick access to our contact details**
- **Access to all product data sheets**
- **Downloadable price lists**



Sales Managers

CLICK or Scan the QR code to
find **YOUR LOCAL SALES MANAGER**
Tel: 01952 262500

Technical Team

General technical enquiries and quoting
01952 262529 | technical.pambuilding@saint-gobain.com

Orders & Customer Services

Order enquiries and stock checking
01952 262508 | Email: orders.pambuilding@saint-gobain.com

After Sales

If you have concerns about anything after you've received
your order, please let us know

01952 262520 | aftersales.pambuilding@saint-gobain.com

© 2025 Pam Building

The information given in this literature is, to the best of our knowledge, correct at the time of production. However, Pam Building is constantly looking at ways of improving our products and services and therefore reserve the right to change, without prior notice, any of the data contained in this publication. Any orders placed will be subject to our Standard Conditions of Sale, available on request.



Pam Building UK
Holyhead Road, Ketley,
Telford, Shropshire, TF1 5AD
Tel : 01952 262500
www.Pambuilding.co.uk