

Trade Price List

January 2025

**Classical cast iron rainwater
pipe and gutter systems**

Pam Building specialises in the manufacture of cast iron above and below ground drainage systems, for Commercial, Public and Residential buildings.



We lead markets in the supply of:

Cast iron soil and rainwater systems, and suspended pipework in basements and car parks and buried under building drainage Innovative products and processes Specialist engineering services Total technical support.

Innovation

With Pam Building, you can be assured of Quality, Innovation and Technical Expertise at all times.

Technical Support

A UK-based business, with one foundry and a distribution centre in the Midlands with international reach with local, specific solutions across all our customers. We offer unrivalled technical support through our technical department, who are on hand to answer any questions or queries you may have from design through to installation.

Expertise in Global Service

Pam Building is an international company, which employs around 360 people with sales in more than 50 countries. Our focus is to build on our 150 years of experience in the manufacture of cast iron products, a noble and durable material. Across our site in Telford, we have over 130 people who are experts in their area's and with a long-standing history in ironwork dating back to 1757, our site has become a renowned centre of excellence for cast iron drainage, with a wealth of expertise and knowledge.

Sustainability

We continually invest time, energy and expertise to create an extensive range of innovative solutions which are easy to install, simple to joint and simply offer better value for money in terms of total life costs.

Quality Assurance

All parts of our operation have audited quality management systems and fully satisfy BS EN ISO 9001:2015. The majority of products are third-party assessed and approved against all relevant worldwide regulations and standards.

Contents

10	Half Round Gutter and Connections	23	Moulded Gutter and Connections
16	Beaded Half Round Gutter and Connections	26	Round Pipes and Fittings
18	Deep Half Round Gutter and Connections	32	Rainwater Heads
20	Ogee Gutter and Connections	34	Rectangular Pipes and Fittings
		40	Technical Calculations

Delivery Service Category (DSC) timescales

Pam Building provide a product availability structure for all its products to enable contractors and distributors to plan supply more effectively on projects.

The products are categorised as follows and are shown against each product in the price list tables.

Category	Description	Within Working Days
A	Products manufactured for ex-stock availability. Any out-of-stock situation should be quickly resolved.	5
B	Products manufactured and a stock level will be held based on average demand.	5-15
C	Products generally of lower demand—some stock may be held or made to order.	15-30

Look for the DSC key at the top of the pages: A =5 B =5-15 C =15-30

If there is a product you require faster than the time-scale above please call our sales team on [01952 262508](tel:01952 262508)

Click the links or scan the QR codes

Anywhere you see the click icon, you will be able to click the text and go straight to the section/page mentioned in the text. Also all contact details and QR Codes throughout the document on all pages are hyperlinked for your convenience.





Classical Cast Iron Rainwater Pipe & Gutter Systems

Pam Building manufactures the classical range of traditional rainwater and gutter systems designed in accordance with BS 460:2002+a2:2007.

Cast iron gutters and downpipes have been manufactured at the Telford site for over 100 years servicing the housing and construction markets, recognised for their aesthetic charm, strength to withstand high winds, heavy snow, and vandalism and above all their long life capabilities. No other material can match the character, durability, strength or appeal of cast iron and, most importantly, only cast iron can preserve the intentions of the original architect and the aesthetic integrity of the building.

Applications

- Listed and traditional properties
- Ecclesiastical buildings i.e. Churches
- Homes of high quality and appearance
- Farm buildings and barn conversions
- Public Houses
- Railway buildings
- Self-build homes of character
- Properties in conservation areas
- Pre-1960 homes—refurbishment
- Inner city buildings
- Sport/recreation buildings

Benefits

Strength

- High resistance to impact (accidental and vandalism) a major consideration for inner cities, town shopping precincts and schools etc.
- Secure against—heavy snow falls and high winds
- Rigidity to comfortably accommodate the weight of ladders for routine maintenance
- The physical properties of cast iron will be sustained throughout its life (provided adequately painted and maintained)

Acoustics

- Will not rattle in high winds
- Will not twist/creak due to temperature changes
- Excellent sound deadening properties—therefore no significant sound of running or dripping water disturbing the peace

Appearance

- Cast iron has an aesthetic charm that simply cannot be matched by other materials
- Retains and enhances the traditional character of the building
- Can be painted any colour to match building
- Enhances perception of the value to the property
- Many profiles to match virtually all architectural styles

Longevity

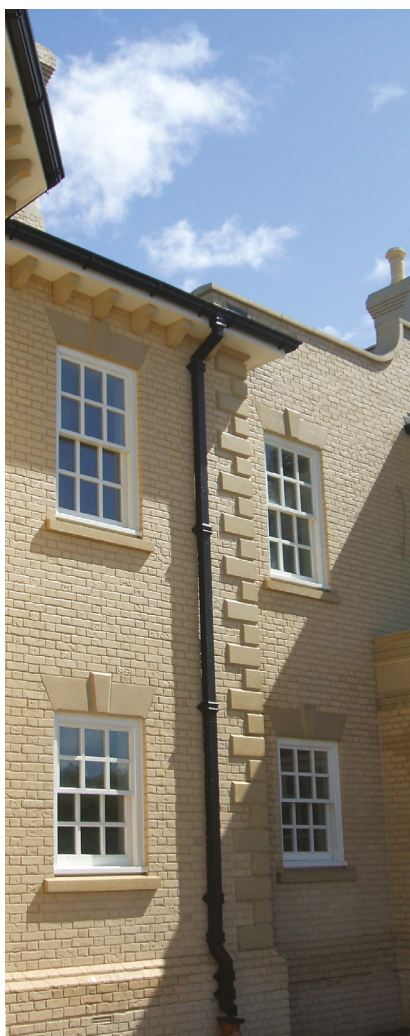
- Naturally durable up to 100 years
- Cost-effective over the long term, cast iron can last five times longer than alternative materials, which have an estimated lifespan of around 20 years
- Minimal maintenance: If installed correctly to the manufacturer's recommendations (refer to Installation Guide), cast iron systems should require little structural maintenance throughout their life only periodical painting approximately every 5 years or longer (depending on location and climatic conditions)

Green material

- Manufactured from up to 99% recycled content
- 100% recyclable at the end of its long life—indefinitely
- Eliminates unnecessary replacement and waste—NO LANDFILL LEGACY
- Profile designs have changed little over the years. Therefore new components can easily be integrated into existing systems, avoiding costs of complete replacement

Why choose cast iron?

The material properties of cast iron have long been recognised and it is these which make it particularly suitable for the rainwater systems of listed buildings and wherever conservation is an issue.



Revised Planning Practice Guide PPS5 for Historic Environment.
The Department and Local Government, and English Heritage advises:

- A change from original materials usually requires building consent
- Point 189 supports the use of materials appropriate to the relevant period, such as cast iron for gutters and downpipes for many Georgian and Victorian buildings



Please **CLICK** or **SCAN THE QR CODE** to see more on our website or call our Technical Sales Team on **01952 262529**



Range

Primed ☐ Plus Coated ☐

Classical Gutter profiles available

→ **Half Round sizes:** 100mm (4"), 115mm (4.5"), 125mm (5") and 150mm (6")



→ **Deep Half Round:** 125mm x 75mm (5" x 3")



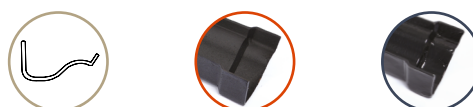
→ **Beaded Half Round:** 115mm (4.5") and 125mm (5")



→ **Moulded:** 100mm x 75mm (4"x3") 125mm x 100mm (5"x4") and 150mm x 100mm (6"x4")



→ **Ogee:** 115mm (4.5") and 125mm (5")



Rainwater Pipe Profiles

→ **Circular pipes:** 65mm (2.5"), 75mm (3") and 100mm (4")



→ **Rectangular:** 100mm (4") x 75mm (3")





Coating

PLUS

Classical cast iron rainwater and gutter systems supplied in high performance black semi-gloss finished coat for immediate installation.

- High performing Polymer Powder Alloy (PPA571)
- Black semi-gloss RAL 9005 700 as standard to an average thickness of 200 microns
- Black as standard available on half round and ogee gutters and circular downpipe systems from stock. Other profiles to order.
- Classical products coated in PPA571 have been salt spray and ultra-violet resistance tested for up to 1,500 hours
- This test is an indicator only used in the automotive industry and is particularly aggressive and so difficult to relate to paint life expectancy.

The range is supplied in finished coat for immediate installation. When installation is complete it is important to inspect and any slight damage to the coating is repaired with the touch-up paint available product code 192549 (Primer) and 192550 (topcoat). Also any pipe/gutter cut ends will need to be repainted.

Benefits

- Finished product for immediate installation
- No painting on site
- Reduces total installed time by up to 60%
- Factory applied coating to a consistent standard
- Recognised paint system for the coating of metal for external applications.

Technical points

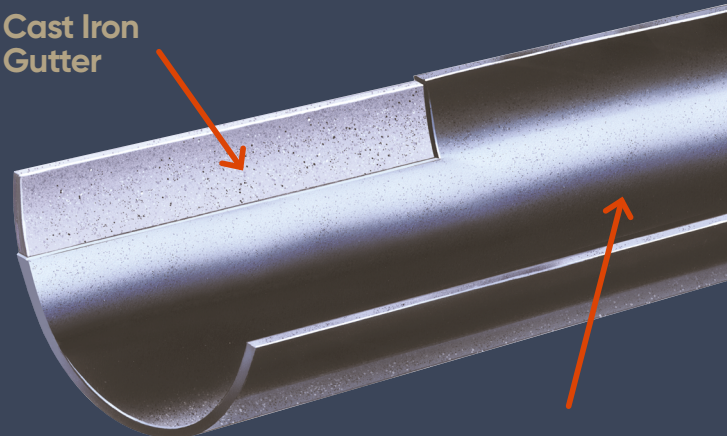
- Pam Building will not supply Classical Plus to properties located within 5 miles of the sea coast. We recommend that cast iron is painted on site using a high quality paint for coastal regions.
- All damage to paint surface during installation must be adequately made good on completion
- When used with gutter jointing kits installation can be completed in a day
- Product is supplied wrapped to protect from damage.

PRIMED

Classical cast iron rainwater and gutter systems delivered in a primed black finish, ready to be painted onsite. They come coated with a black water-based primer and should be painted in a color of your choice. Ensure that you use a non-ferrous (anti-corrosive) paint that is suitable for over-painting onto a water-based primer.

- The expectation of performance will depend on:
 - Colour chosen (white will highlight any imperfection in the coating)
 - A Sufficient paint system has been applied before installation
 - Undercoat/Topcoat
 - 3 x layers would be recommended on top of Primer coat

Cast Iron Gutter



PLUS Coating High performance semi-gloss black finish—Polymer
Average thickness 200 microns

Classical Cast Iron Rainwater Pipe and Gutter Systems

HALF ROUND

Coating	SIZE Ø mm											
	100			115			125			150		
	PRODUCT CODE	ΔDSC.	UNIT PRICE £	PRODUCT CODE	ΔDSC.	UNIT PRICE £	PRODUCT CODE	ΔDSC.	UNIT PRICE £	PRODUCT CODE	ΔDSC.	UNIT PRICE £



Half Round Gutter 1.83m length

Pack size 1 (100mm = 6.2kg, 115mm = 7.4kg, 125mm = 8.3kg & 150mm = 10.4kg)

G800



PLUS	192551	A	98.85	192552	A	101.57	192553	A	118.31	192554	A	182.14
PRIMED	192191	A	74.39	192192	A	77.55	192193	A	90.75	192194	A	149.91



90° Angle Double Socket

Pack size 1 (100mm = 1.1kg, 115mm = 1.3kg & 125mm = 1.5kg)

G802D



PLUS	192566	C	41.74	192567	C	43.84	192568	B	54.42	—	—	—
PRIMED	192224	B	36.48	192225	A	38.70	192226	B	50.16	—	—	—



90° Right-Hand Angle

Pack size 1 (100mm = 0.9kg, 115mm = 1.3kg, 125mm = 1.4kg & 150mm = 2.0kg)

G801



PLUS	192500	C	35.84	192502	C	36.69	192504	C	41.84	192506	C	105.78
PRIMED	192004	A	30.19	192006	A	30.99	192008	C	36.50	192010	C	66.78



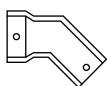
90° Left-Hand Angle

Pack size 1 (100mm = 0.9kg, 115mm = 1.3kg, 125mm = 1.4kg & 150mm = 2.0kg)

G802



PLUS	192508	C	35.84	192510	C	36.69	192512	C	41.84	192514	C	105.78
PRIMED	192012	B	30.19	192014	A	30.99	192016	B	36.50	192018	C	66.78



130° Right-Hand Angle

Pack size 1 (100mm = 0.8kg, 115mm = 0.9kg, 125mm = 1.3kg & 150mm = 1.6kg)

G801



PLUS	192499	C	35.84	192501	C	36.69	192503	C	50.33	192505	C	105.78
PRIMED	192003	C	30.78	192005	C	30.99	192007	C	45.94	192009	C	68.09

Coating	SIZE Ø mm											
	100			115			125			150		
	PRODUCT CODE	Δ DSC.	UNIT PRICE £	PRODUCT CODE	Δ DSC.	UNIT PRICE £	PRODUCT CODE	Δ DSC.	UNIT PRICE £	PRODUCT CODE	Δ DSC.	UNIT PRICE £

135° Left-Hand Angle

Pack size 1 (100mm = 0.8kg, 115mm = 0.9kg, 125mm = 1.3kg & 150mm = 1.6kg)

G802

PLUS	192507	C	35.84	192509	C	36.69	192511	C	50.33	192513	C	105.78
PRIMED	192011	C	30.78	192013	C	30.99	192015	C	46.71	192017	C	68.09

Union Clip

Pack size 1 (100mm & 115mm = 0.5kg, 125mm = 0.7kg & 150mm = 0.7kg)

G803

PLUS	192515	C	26.47	192516	B	30.42	192517	C	33.88	192518	C	61.08
PRIMED	192019	B	19.88	192020	A	24.78	192021	A	28.00	192022	B	31.45

Stopend for Spigot—External

Pack size 1 (100mm & 115mm = 0.4kg, 125mm = 0.6kg & 150mm = 0.6kg)

G804

PLUS	192519	B	15.46	192520	A	17.97	192521	A	17.97	192522	C	25.65
PRIMED	192023	A	10.14	192024	A	13.08	192025	A	13.08	192026	B	18.24

Stopend for Spigot—Internal

Pack size 1 (100mm & 115mm = 0.3kg, 125mm = 0.5kg & 150mm = 0.6kg)

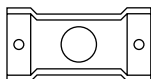
G805

PLUS	192523	B	15.46	192524	B	17.97	192525	B	17.97	192526	C	25.65
PRIMED	192027	A	10.14	192028	A	13.08	192029	A	13.08	192030	B	18.24

Classical Cast Iron Rainwater Pipe and Gutter Systems

Coating	SIZE Ø mm											
	100			115			125			150		
	PRODUCT CODE	^A DSC.	UNIT PRICE £	PRODUCT CODE	^A DSC.	UNIT PRICE £	PRODUCT CODE	^A DSC.	UNIT PRICE £	PRODUCT CODE	^A DSC.	UNIT PRICE £

Nozzles



Nozzle with 65mm Outlet

Pack size 1 (100mm = 1.1kg, 115mm = 1.3kg & 125mm = 1.4kg)

G806

PLUS	192527	B	35.13	192529	B	37.57	192531	C	41.84	—	—	—
PRIMED	192031	A	29.35	192033	A	32.02	192035	A	36.50	—	—	—

Nozzle with 75mm Outlet

Pack size 1 (100mm = 1.3kg, 115mm & 125mm = 1.4kg & 150mm = 1.8kg)

G806

PLUS	192528	C	35.13	192530	B	37.57	192532	A	41.84	192533	C	89.16
PRIMED	192032	B	29.35	192034	A	32.02	192036	A	36.50	192037	B	63.30

Nozzle with 100mm Outlet

Pack size 1 (150mm 1.8kg)

G806

PLUS	—	—	—	—	—	—	—	—	—	192534	C	89.16
PRIMED	—	—	—	—	—	—	—	—	—	192038	C	63.30

Dropeend with socket



Dropeend with Socket and 65mm Outlet

Pack size 1 (100mm & 115mm = 0.9kg)

G807

PLUS	192535	C	45.16	192536	B	48.82	—	—	—	—	—	—
PRIMED	192039	B	34.44	192040	A	38.62	—	—	—	—	—	—

Dropeend with Socket and 75mm Outlet

Pack size 1 (125mm = 1.1kg & 150mm 1.8kg)

G807

PLUS	—	—	—	—	—	—	192537	B	52.77	192538	C	89.16
PRIMED	—	—	—	—	—	—	192041	B	43.15	192042	C	72.44

Dropeend with Socket and 100mm Outlet

Pack size 1 (150mm 2.2kg)

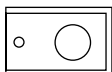
G807

PLUS	—	—	—	—	—	—	—	—	—	192539	C	89.16
PRIMED	—	—	—	—	—	—	—	—	—	192043	C	73.85

HALF ROUND

Coating	SIZE Ø mm											
	100			115			125			150		
	PRODUCT CODE	^A DSC.	UNIT PRICE £	PRODUCT CODE	^A DSC.	UNIT PRICE £	PRODUCT CODE	^A DSC.	UNIT PRICE £	PRODUCT CODE	^A DSC.	UNIT PRICE £

Dropend with spigot



Dropend with Spigot and 65mm Outlet

Pack size 1 (100mm & 115mm = 0.9kg)

G808

PLUS	192540	C	45.16	192541	C	48.82	—	—	—	—	—	—
PRIMED	192044	B	34.44	192045	C	38.62	—	—	—	—	—	—

Dropend with Spigot and 75mm Outlet

Pack size 1 (125mm = 1.0kg & 150mm 1.4kg)

G808

PLUS	—	—	—	—	—	—	192542	C	52.77	192543	C	89.16
PRIMED	—	—	—	—	—	—	192046	C	43.98	192047	C	73.85

Dropend with Spigot and 100mm Outlet

Pack size 1 (150mm = 2.2kg)

G808

PLUS	—	—	—	—	—	—	—	—	—	192544	C	89.16
PRIMED	—	—	—	—	—	—	—	—	—	192048	C	73.85



Cast Iron Fascia Bracket

Pack size 1 (100mm, 115mm, 125mm = 0.3kg & 150mm = 0.376kg)

G809

PLUS	192545	A	10.77	192546	A	11.65	192547	A	12.43	192548	A	12.79
PRIMED	192049	A	8.48	192050	A	8.48	192051	A	8.48	192052	A	10.74

^ADelivery Service Category DSC (see page 3)

A =5 DAYS **B** =5-15 DAYS **C** =15-30 DAYS

Classical Cast Iron Rainwater Pipe and Gutter Systems

HALF ROUND

Coating	SIZE Ø mm											
	100			115			125			150		
	PRODUCT CODE	^A DSC.	UNIT PRICE £	PRODUCT CODE	^A DSC.	UNIT PRICE £	PRODUCT CODE	^A DSC.	UNIT PRICE £	PRODUCT CODE	^A DSC.	UNIT PRICE £

Mild Steel Rise and Fall Bracket

Pack size 1 (100mm, 115mm, 125mm & 150mm = 0.4kg)

G872

GALV	256523	A	16.90	256524	A	16.90	256525	A	17.37	256526	B	17.68
------	--------	---	-------	--------	---	-------	--------	---	-------	--------	---	-------

Please note this product is **GALVANISED** and requires painting after installation

Mild Steel Rise and Fall Bracket with retaining lip

Pack size 1 (100mm, 115mm & 125mm = 0.4kg)

G877

GALV	220703	A	16.90	220704	A	16.90	220705	A	17.37	-	-	-
------	--------	---	-------	--------	---	-------	--------	---	-------	---	---	---

Please note this product is **GALVANISED** and requires painting after installation

Mild Steel Rise and Fall Bracket with retaining lip & understay

Pack size 1 (100mm, 115mm, 125mm & 150mm = 0.4kg)

G877

GALV	220731	B	24.92	220732	B	25.22	220733	B	27.54	220734	B	26.48
------	--------	---	-------	--------	---	-------	--------	---	-------	--------	---	-------

Please note this product is **GALVANISED** and requires painting after installation

Top Fix Rafter Bracket in Galvanised Mild Steel

Pack size 1 (100mm, 115mm, 125mm & 150mm = 0.3kg)

G871

PLUS	192391	B	11.25	192392	B	11.25	192393	B	11.55	192394	C	15.48
------	--------	---	-------	--------	---	-------	--------	---	-------	--------	---	-------

PRIMED	192247	A	8.07	192248	A	8.07	192249	A	8.37	192250	B	12.65
--------	--------	---	------	--------	---	------	--------	---	------	--------	---	-------

Please note this product is **GALVANISED** and requires painting after installation

Side Fix Rafter Bracket in Galvanised Mild Steel

Pack size 1 (100mm, 115mm, 125mm & 150mm = 0.3kg)

G870

PLUS	192388	B	11.25	192387	B	11.25	192389	A	11.55	192390	B	15.48
------	--------	---	-------	--------	---	-------	--------	---	-------	--------	---	-------

PRIMED	192243	A	8.07	192244	A	8.07	192245	A	8.37	192246	A	12.65
--------	--------	---	------	--------	---	------	--------	---	------	--------	---	-------

Please note this product is **GALVANISED** and requires painting after installation

Drive-in Bracket with Retaining Lip

Pack size 1 (100mm, 115mm & 125mm = 0.335kg)

G878

GALV	220706	B	18.27	220707	C	18.35	220708	C	18.39	-	-	-
------	--------	---	-------	--------	---	-------	--------	---	-------	---	---	---

Please note this product is **GALVANISED** and requires painting after installation

^ADelivery Service Category DSC (see page 3)

A =5 DAYS **B** =5-15 DAYS **C** =15-30 DAYS



Coating	SIZE Ø mm											
	100			115			125			150		
	PRODUCT CODE	ΔDSC.	UNIT PRICE £	PRODUCT CODE	ΔDSC.	UNIT PRICE £	PRODUCT CODE	ΔDSC.	UNIT PRICE £	PRODUCT CODE	ΔDSC.	UNIT PRICE £

Cast Iron Jointing Kit
Pack of 20 to suit 100, 115 and 125mm sized standard half round gutter systems (0.3kg)

G873

192284	A	63.64	-	-	-	-	-	-	-	-	-	-
--------	---	-------	---	---	---	---	---	---	---	---	---	---

Plus Coating Black Touch-up Paint – PRIMED
Pack size 1 (0.5 Litre Tin)

192549	C	39.96	-	-	-	-	-	-	-	-	-	-
--------	---	-------	---	---	---	---	---	---	---	---	---	---

Plus Coating Black Touch-up Paint – Top Coat
Pack size 1 (0.5 Litre Tin)

192550	B	39.96	-	-	-	-	-	-	-	-	-	-
--------	---	-------	---	---	---	---	---	---	---	---	---	---



Classical Cast Iron Rainwater Pipe and Gutter Systems

Coating	SIZE Ø mm					
	115			125		
	PRODUCT CODE	^A DSC.	UNIT PRICE £	PRODUCT CODE	^A DSC.	UNIT PRICE £

Beeded Half Round Gutter 1.83m length

Pack size 1 (115mm = 10.8kg & 125mm = 12.2kg)

G820

PLUS	213645	B	103.27	209694	C	114.89
PRIMED	192198	A	77.55	192199	A	90.75

90° Angle Double Socket

Pack size 1 (115mm = 1.7kg & 125mm = 1.8kg)

G822D

PLUS	246992	C	38.28	240067	C	46.65
PRIMED	236531	A	31.72	238999	A	38.64

135° Angle Double Socket

Pack size 1 (115mm = 1.3kg & 125mm = 1.4kg)

G822D

PLUS	248070	C	38.28	248071	C	46.65
PRIMED	236532	B	31.72	238997	C	38.64

Union Clip

Pack size 1 (115mm = 0.7kg & 125mm = 0.8kg)

G823

PLUS	213643	C	29.23	209691	C	33.81
PRIMED	192092	B	24.22	192093	B	28.00

Stop End for Spigot External

Pack size 1 (115mm & 125mm = 0.5kg)

G824

PLUS	213617	B	15.80	209680	C	15.87
PRIMED	192095	A	13.08	192096	A	13.11

Stop End for Socket Internal

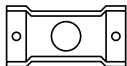
Pack size 1 (115mm = 0.4kg & 125mm = 0.5kg)

G825

PLUS	213616	B	15.80	209678	C	15.80
PRIMED	192098	A	13.08	192099	B	13.11

Coating	SIZE Ø mm					
	115			125		
	PRODUCT CODE	^A DSC.	UNIT PRICE £	PRODUCT CODE	^A DSC.	UNIT PRICE £

Nozzles



Nozzle with 65mm outlet

Pack size 1 (115mm = 1.46kg & 125mm = 1.45kg)

G826

PLUS	213615	C	38.59	223179	C	45.73
PRIMED	192101	A	32.02	192103	B	37.87

Nozzle with 75mm outlet

Pack size 1 (115mm = 1.4kg & 125mm = 1.5kg)

G826

PLUS	223176	C	39.32	209677	C	45.73
PRIMED	192102	B	32.63	192104	B	37.87



Cast Iron Fascia Bracket

Pack size 1 (115mm & 125mm = 0.3kg)

G809

PLUS	192546	A	11.65	192547	A	12.43
PRIMED	192050	A	8.48	192051	A	8.48

Mild Steel Rise and Fall Bracket

Pack size 1 (115mm & 125mm = 0.4kg)

G872

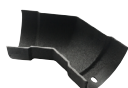
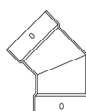
GALV	256524	A	16.90	256525	A	17.37
------	--------	---	-------	--------	---	-------



Please note this product is **GALVANISED** and requires painting after installation

Classical Cast Iron Rainwater Pipe and Gutter Systems

DEEP HALF ROUND



Coating	SIZE Ø mm		
	125 X 75mm		
	PRODUCT CODE	^A DISC.	UNIT PRICE £

Gutter

Pack size 1 (125 x 75mm = 14.0kg)

G810

PLUS	210572	C	197.07
PRIMED	192196	A	160.94

90° Double Socket Angle

Pack size 1 (125 x 75mm = 3.4kg)

G812D

PLUS	258066	C	120.35
PRIMED	256634	B	105.30

135° Double Socket Angle

Pack size 1 (125 x 75 = 3.4kg)

G812D

PLUS	257921	C	120.35
PRIMED	256635	C	105.30

Union Clip

Pack size 1 (125 x 75 = 0.5kg)

G813

PLUS	223186	C	44.73
PRIMED	192062	C	35.21

Stop End for Spigot – External

Pack size 1 (125 x 75 = 0.7kg)

G814

PLUS	210558	C	41.00
PRIMED	192064	B	35.89

Stop End for Socket – Internal

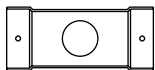
Pack size 1 (125 x 75 = 0.6kg)

G815

PLUS	210557	C	41.00
PRIMED	192066	B	35.89

Coating	SIZE Ø mm		
	125 X 75mm		
	PRODUCT CODE	^A DSC	UNIT PRICE £

Nozzles



Nozzle with 65mm Outlet

Pack size 1 (125 x 75mm = 2.5kg)

G816

PLUS	223187	C	122.74
PRIMED	192069	C	107.40

Nozzle with 75mm Outlet

Pack size 1 (125 x 75mm = 2.5kg)

G816

PLUS	210559	C	120.35
PRIMED	192070	B	105.30

Cast Iron Fascia Bracket

Pack size 1 (125 x 75 = 0.7kg)

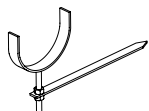
G819



PLUS	210571	C	40.24
PRIMED	192078	A	35.21

Mild Steel Rise and Fall Bracket

Pack size 1 (125 x 75 = 0.488kg)



GALV	225821	B	26.11
------	--------	---	-------

Please note this product is **GALVANISED** and requires painting after installation

Top Fix Rafter Bracket in Galvanised Mild Steel

Pack size 1 (125 x 75 = 0.36kg)



GALV	206955	B	28.50
------	--------	---	-------

Please note this product is **GALVANISED** and requires painting after installation

Side Fix Rafter Bracket in Galvanised Mild Steel

Pack size 1 (125 x 75 = 0.34kg)



GALV	225051	A	30.70
------	--------	---	-------

Please note this product is **GALVANISED** and requires painting after installation

^ADelivery Service Category DSC (see page 3)

A =5 DAYS **B** =5-15 DAYS **C** =15-30 DAYS

Classical Cast Iron Rainwater Pipe and Gutter Systems

OGEE

Coating	SIZE Ø mm					
	115			125		
	PRODUCT CODE	^A DSC.	UNIT PRICE £	PRODUCT CODE	^A DSC.	UNIT PRICE £

Ogee Gutter 1.83m length Pack size 1 (115mm = 10.5kg & 125mm = 12.5kg)

G840

PLUS	199803	B	117.32	199824	C	122.22
PRIMED	192206	A	91.27	192208	A	95.76

90° Internal Angle Pack size 1 (115mm = 1.5kg & 125mm = 1.9kg)

G841

PLUS	199805	C	39.18	199828	C	41.84
PRIMED	192139	C	34.07	192141	C	37.17

135° Internal Angle Pack size 1 (115mm = 1.0kg & 125mm = 1.8kg)

G841

PLUS	199804	C	40.30	199827	C	50.94
PRIMED	192138	C	35.42	192140	C	46.70

90° External Angle Pack size 1 (115mm = 1.4kg & 125mm = 1.5kg)

G842

PLUS	199780	C	39.18	199830	C	41.84
PRIMED	192145	B	34.07	192147	B	37.17

135° External Angle Pack size 1 (115mm = 1.1kg & 125mm = 1.4kg)

G842

PLUS	199806	C	40.30	199829	C	50.94
PRIMED	192144	C	35.42	192146	C	46.70

Union Clip Pack size 1 (115mm & 125mm = 0.7kg)

G843

PLUS	199813	C	29.94	199851	C	33.88
PRIMED	192149	B	24.22	192150	B	28.00

Coating	SIZE Ø mm					
	115			125		
	PRODUCT CODE	^A DSC.	UNIT PRICE £	PRODUCT CODE	^A DSC.	UNIT PRICE £

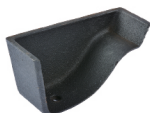


Stop End for Socket - Internal

Pack size 1 (115mm & 125mm = 0.5kg)

G844

PLUS	199814	C	18.10	199852	C	20.35
PRIMED	192152	B	13.44	192153	B	13.44



Stop End for Spigot - External

Pack size 1 (115mm = 0.5kg & 125mm = 0.6kg)

G845

PLUS	199815	C	18.10	199871	C	20.35
PRIMED	192155	B	13.44	192156	B	13.44

Nozzles



Nozzle with 65mm Outlet

Pack size 1 (115mm = 1.5kg & 125mm = 1.9kg)

G846

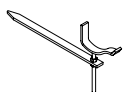
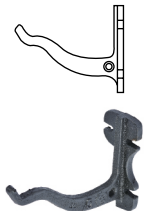
PLUS	199834	C	39.28	199873	C	42.33
PRIMED	192158	B	34.07	192159	C	37.17

Nozzle with 75mm Outlet

Pack size 1 (125mm = 1.9kg)

G846

PLUS	—	—	—	199874	C	42.33
PRIMED	—	—	—	192160	B	37.17



Coating	SIZE Ø mm					
	115			125		
	PRODUCT CODE	^A DISC.	UNIT PRICE £	PRODUCT CODE	^A DISC.	UNIT PRICE £

Fascia Bracket

Pack size 1 (115mm = 0.3kg & 125mm = 0.5kg)

G849

PLUS	199837	B	12.23	199876	B	14.06
PRIMED	192170	A	9.20	192171	A	10.38

Rise and Fall Bracket

Pack size 1 (115mm & 125mm = 0.5kg)

G874

GALV	256529	C	17.77	256530	C	17.92
------	--------	---	-------	--------	---	-------

Please note this product is **(GALVANISED)** and requires painting after installation

Top Fix Rafter Bracket in Galvanised Mild Steel

Pack size 1 (115mm & 125mm = 0.4kg)

G875

GALV	208283	C	13.11	208284	B	13.89
------	--------	---	-------	--------	---	-------

Please note this product is **(GALVANISED)** and requires painting after installation

Side Fix Rafter Bracket in Galvanised Mild Steel

Pack size 1 (115mm & 125mm = 0.4kg)

G876

GALV	208286	C	13.11	208287	C	13.89
------	--------	---	-------	--------	---	-------

Please note this product is **(GALVANISED)** and requires painting after installation

Coating	SIZE Ø mm								
	100 x 75mm			125 x 100mm			150 x 100mm		
	PRODUCT CODE	ΔDSC.	UNIT PRICE £	PRODUCT CODE	ΔDSC.	UNIT PRICE £	PRODUCT CODE	ΔDSC.	UNIT PRICE £

Moulded Gutter 1.83m length

Pack size 1 (100 x 75mm = 11kg, 125 x 100mm = 18kg & 150 x 100mm = 19kg)

G830

PLUS	204868	B	174.57	206382	B	255.93	223199	B	379.68
PRIMED	192200	A	142.56	192202	A	208.99	192621	A	310.03

90° Internal Angle

Pack size 1 (100 x 75mm = 2.0kg, 125 x 100mm = 2.3kg & 150 x 100mm = 3.4kg)

G831

PLUS	223188	C	92.32	206383	C	132.59	223200	C	180.72
PRIMED	192113	C	76.49	192115	C	109.89	192668	B	149.75

90° External Angle

Pack size 1 (100 x 75mm = 2.0kg, 125 x 100mm = 2.3kg & 150 x 100mm = 3.4kg)

G832

PLUS	204869	C	92.32	206385	C	132.59	223202	C	180.72
PRIMED	192117	C	77.99	192119	C	109.89	208227	B	149.75

135° Internal Angle

Pack size 1 (100 x 75mm = 2.0kg, 125 x 100mm = 3.2kg & 150 x 100mm = 2.6kg)

G831

PLUS	223189	C	92.32	223194	C	132.59	223201	C	180.72
PRIMED	192112	C	76.49	192114	C	109.89	208230	C	149.75

135° External Angle

Pack size 1 (100 x 75mm = 1.2kg, 125 x 100mm = 1.5kg & 150 x 100mm = 2.6kg)

G832

PLUS	223190	C	94.05	223195	C	132.59	223203	C	180.72
PRIMED	192116	C	77.99	192118	C	109.89	208272	C	149.75

Union Clip

Pack size 1 (100 x 75mm = 0.5kg, 125 x 100mm = 0.6kg & 150 x 100mm = 0.7kg)

G833

PLUS	223191	C	39.32	206386	C	45.60	223204	C	60.27
PRIMED	192120	C	32.63	192121	B	37.82	208276	B	49.94

^ΔDelivery Service Category DSC (see page 3)

A =5 DAYS **B** =5-15 DAYS **C** =15-30 DAYS

Classical Cast Iron Rainwater Pipe and Gutter Systems



Coating	SIZE Ø mm								
	100 x 75mm			125 x 100mm			150 x 100mm		
	PRODUCT CODE	^A DSC.	UNIT PRICE £	PRODUCT CODE	^A DSC.	UNIT PRICE £	PRODUCT CODE	^A DSC.	UNIT PRICE £

Stop End for Spigot – Left Hand

Pack size 1 (100 x 75mm = 0.5kg, 125 x 100mm = 0.7kg & 150 x 100mm = 0.8kg)

G834

PLUS	204874	C	35.24	206388	C	45.60	223205	C	60.27
PRIMED	192122	C	29.21	192123	C	37.82	192665	B	49.94

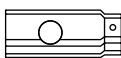
Stop End for Spigot – Right Hand

Pack size 1 (100 x 75mm = 0.7kg, 125 x 100mm = 0.9kg & 150 x 100mm = 1.0kg)

G835

PLUS	204875	C	35.24	206387	C	45.60	223206	C	60.27
PRIMED	192124	C	29.21	192125	C	37.82	192666	B	49.94

Nozzles



Nozzle with 65mm Outlet

Pack size 1 (100 x 75mm & 125 x 100mm = 2kg & 150 x 100mm = 3.9kg)

G836

PLUS	223192	C	94.05	223196	C	132.59	223207	C	179.60
PRIMED	192126	B	77.99	192128	C	109.89	221821	C	148.83

Nozzle with 75mm Outlet

Pack size 1 (100 x 75mm & 125 x 100mm = 2kg & 150 x 100mm = 3.9kg)

G836

PLUS	204876	C	94.05	206390	C	132.59	223208	C	179.60
PRIMED	192127	B	77.99	192129	C	109.89	192667	B	148.83

Nozzle with 100mm Outlet

Pack size 1 (125 x 100mm = 2kg & 150 x 100mm = 4.0kg)

G836

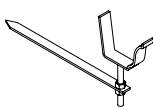
PLUS	—	—	—	223197	C	135.16	223209	C	179.60
PRIMED	—	—	—	192130	C	112.03	208273	B	148.83

Nozzle with 100 x 75mm Outlet

Pack size 1 (125 x 100mm = 2.3kg & 150 x 100mm = 4kg)

G836

PLUS	—	—	—	206389	C	135.16	—	—	—
PRIMED	—	—	—	192131	C	112.03	—	—	—



Coating	SIZE Ø mm								
	100 x 75mm			125 x 100mm			150 x 100mm		
	PRODUCT CODE	^DSC.	UNIT PRICE £	PRODUCT CODE	^DSC.	UNIT PRICE £	PRODUCT CODE	^DSC.	UNIT PRICE £

Fascia Bracket

Pack size 1 (100 x 75mm = 0.5kg, 125 x 100mm & 150 x 100mm = 0.6kg)

G839

PLUS	223193	C	18.68	223198	C	18.68	223212	C	18.44
PRIMED	192267	A	15.47	192242	A	15.47	192623	A	16.74

Rise and Fall Bracket in Galvanised Mild Steel

Pack size 1 (100 x 75mm = 0.4kg, 125 x 100mm = 0.5kg & 150 x 100mm = 0.6kg)

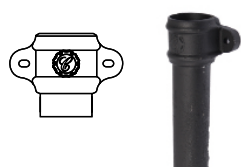
GALV	† 240305	C	42.60	† 230033	C	52.98	† 248203	C	52.98
------	----------	---	-------	----------	---	-------	----------	---	-------

Please note this product is **GALVANISED** and requires painting after installation



† Made to Order

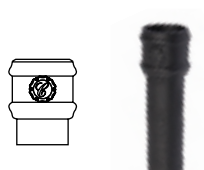
Classical Cast Iron Rainwater Pipe and Gutter Systems



Single Socket Pipes—Eared 1.83m length A585

Pack size 1 (65mm = 10.3kg, 75mm = 12.5kg & 100mm = 16kg)

Coating	SIZE Ø mm								
	65mm			75mm			100mm		
	PRODUCT CODE	^A DSC.	UNIT PRICE £	PRODUCT CODE	^A DSC.	UNIT PRICE £	PRODUCT CODE	^A DSC.	UNIT PRICE £
PLUS	192448	A	171.02	192450	A	171.02	192452	A	240.95
PRIMED	191912	A	144.87	191916	A	144.87	191919	A	194.56



Single Socket Pipes—No Ears 1.83m length A585

Pack size 1 (65mm = 10.1kg, 75mm = 12.1kg & 100mm = 15.5kg)

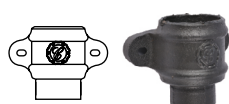
Coating	SIZE Ø mm								
	65mm			75mm			100mm		
	PRODUCT CODE	^A DSC.	UNIT PRICE £	PRODUCT CODE	^A DSC.	UNIT PRICE £	PRODUCT CODE	^A DSC.	UNIT PRICE £
PLUS	192447	B	162.47	192449	A	162.47	192451	C	231.36
PRIMED	191910	A	135.58	191914	A	135.58	191918	A	185.08



Plain Barrels 1.75m length A585

Pack size 1 (65mm = 9kg, 75mm = 11kg & 100mm = 14kg)

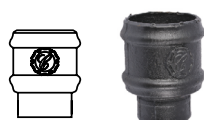
Coating	SIZE Ø mm								
	65mm			75mm			100mm		
	PRODUCT CODE	^A DSC.	UNIT PRICE £	PRODUCT CODE	^A DSC.	UNIT PRICE £	PRODUCT CODE	^A DSC.	UNIT PRICE £
PLUS	192558	B	133.67	192559	A	133.67	192560	B	183.33
PRIMED	192216	A	116.03	192217	A	116.03	192218	A	154.73



Loose Sockets — Eared A586

Pack size 1 (65mm = 1.3kg, 75mm = 1.5kg & 100mm = 2kg)

Coating	SIZE Ø mm								
	65mm			75mm			100mm		
	PRODUCT CODE	^A DSC.	UNIT PRICE £	PRODUCT CODE	^A DSC.	UNIT PRICE £	PRODUCT CODE	^A DSC.	UNIT PRICE £
PLUS	192453	A	37.87	192454	A	37.87	192455	B	47.69
PRIMED	191921	A	27.52	191922	A	27.52	191923	A	37.17



Loose Sockets — No Ears A586

Pack size 1 (65mm = 1.3kg, 75mm = 1.5kg & 100mm = 2kg)

Coating	SIZE Ø mm								
	65mm			75mm			100mm		
	PRODUCT CODE	^A DSC.	UNIT PRICE £	PRODUCT CODE	^A DSC.	UNIT PRICE £	PRODUCT CODE	^A DSC.	UNIT PRICE £
PLUS	192561	C	30.54	192562	B	30.54	192563	C	39.87
PRIMED	192219	A	20.52	192220	A	20.52	192221	B	29.55



Cast Iron Wall Spacer Plate for use with Eared Classical Rainwater Pipes and Shoes A584

Pack size 1 (65mm = 0.2kg, 75mm = 0.3kg & 100mm = 0.4kg)

Coating	SIZE Ø mm								
	65mm			75mm			100mm		
	PRODUCT CODE	^A DSC.	UNIT PRICE £	PRODUCT CODE	^A DSC.	UNIT PRICE £	PRODUCT CODE	^A DSC.	UNIT PRICE £
PLUS	192555	B	14.23	192556	B	14.48	192557	A	14.60
PRIMED	192213	A	11.97	192214	A	12.18	192215	A	12.38

Coating	SIZE Ø mm								
	65mm			75mm			100mm		
	PRODUCT CODE	Δ DSC.	UNIT PRICE £	PRODUCT CODE	Δ DSC.	UNIT PRICE £	PRODUCT CODE	Δ DSC.	UNIT PRICE £

30mm Wood Bobbins—one size fits all

Pack size 10 (65mm, 75mm & 100mm = 0.1kg)

-	242200	A	25.59	-	-	-	-	-	-
---	--------	---	-------	---	---	---	---	---	---

Pipe Nails

Pack size 10

-	-	-	-	242231	B	7.58	242232	A	8.54
---	---	---	---	--------	---	------	--------	---	------

Shoes Front

Shoes Front - Eared

Pack size 1 (65mm = 2.3kg, 75mm = 2.8kg & 100mm = 4.5kg)

A588

PLUS	192456	A	79.28	192457	A	79.28	192458	B	100.73
------	--------	---	-------	--------	---	-------	--------	---	--------

PRIMED	191924	A	68.58	191925	A	68.58	191926	A	91.10
--------	--------	---	-------	--------	---	-------	--------	---	-------

Shoes Front - No Ears

Pack size 1 (65mm = 2.2kg, 75mm = 2.3kg & 100mm = 3.8kg)

A588

PLUS	192569	C	70.04	192570	C	70.04	192459	C	91.26
------	--------	---	-------	--------	---	-------	--------	---	-------

PRIMED	192227	A	59.53	192228	B	59.53	191927	C	80.15
--------	--------	---	-------	--------	---	-------	--------	---	-------

Anti-Splash Shoes

Anti-Splash Shoes - Eared

Pack size 1 (65mm = 4.5kg & 75mm = 4.2kg)

A589

PLUS	259748	C	94.40	259752	C	94.40	-	-	-
------	--------	---	-------	--------	---	-------	---	---	---

PRIMED	259738	C	85.79	259744	C	85.79	-	-	-
--------	--------	---	-------	--------	---	-------	---	---	---

Anti-Splash Shoes - No Ears

Pack size 1 (65mm = 4kg & 75mm = 3.7kg)

A589

PLUS	259750	C	90.97	259753	C	90.97	-	-	-
------	--------	---	-------	--------	---	-------	---	---	---

PRIMED	259742	C	82.37	259746	C	82.37	-	-	-
--------	--------	---	-------	--------	---	-------	---	---	---

Classical Cast Iron Rainwater Pipe and Gutter Systems

Coating	SIZE Ø mm								
	65mm			75mm			100mm		
	PRODUCT CODE	^A DISC.	UNIT PRICE £	PRODUCT CODE	^A DISC.	UNIT PRICE £	PRODUCT CODE	^A DISC.	UNIT PRICE £

Access Pipe

Access Pipe - Eared

Pack size 1 (65mm = 2.9kg, 75mm = 3.8kg & 100mm = 5.5kg)

A590

PLUS	192412	C	167.52	192413	C	175.24	192565	C	254.27
PRIMED	192410	C	154.50	192411	C	160.29	192223	C	225.48

Access Pipe - No Ears

Pack size 1 (65mm = 2.4kg, 75mm = 3.4kg & 100mm = 4.9kg)

A590

PLUS	192460	C	118.69	192461	C	124.27	192564	C	214.41
PRIMED	191928	A	106.88	191929	B	112.21	192222	B	199.92

Diverter Kits

Diverter Kits – Left Hand Connection Waterbutt

Pack size 1 (65mm = 1.6kg & 75mm = 1.8kg)

A593

PLUS	192397	C	93.03	192398	C	93.03	—	—	—
PRIMED	192395	C	81.28	192396	C	81.28	—	—	—

Diverter Kits – Right Hand Connection Waterbutt

Pack size 1 (65mm = 1.6kg & 75mm = 1.8kg)

A593

PLUS	217407	C	93.03	217409	C	93.03	—	—	—
PRIMED	214840	C	81.28	217408	B	81.28	—	—	—

92° Bends

Pack size 1 (65mm = 1.9kg, 75mm = 2.6kg & 100mm = 4.3kg)

A591

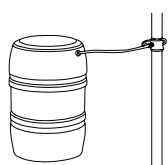
PLUS	192462	B	52.03	192465	B	61.30	192468	B	82.90
PRIMED	191930	A	42.00	191933	A	50.97	191936	B	72.02

112° Bends

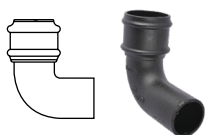
Pack size 1 (65mm = 1.9kg, 75mm = 2.3kg & 100mm = 3.8kg)

A591

PLUS	192463	B	52.03	192466	B	61.30	192469	C	82.90
PRIMED	191931	A	42.81	191934	A	50.97	191937	A	72.02



Water Butt not included



Coating	SIZE Ø mm								
	65mm			75mm			100mm		
	PRODUCT CODE	^A DSC.	UNIT PRICE £	PRODUCT CODE	^A DSC.	UNIT PRICE £	PRODUCT CODE	^A DSC.	UNIT PRICE £

135° Bends

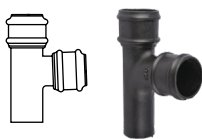
Pack size 1 (65mm = 1.6kg, 75mm = 1.9kg & 100mm = 2.9kg)

A591

PLUS	192464	C	52.03	192467	B	58.35	192470	C	117.50
PRIMED	191932	A	42.00	191935	A	48.11	191938	A	105.68

92° Branches

Pack size 1 (65mm = 3kg, 75mm = 4kg & 100mm = 5.9kg)

A592

PLUS	192471	C	98.36	192474	C	107.45	192477	C	125.82
PRIMED	191939	C	88.14	191942	C	97.20	191945	C	113.27

112° Branches

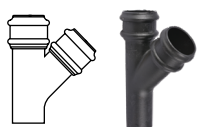
Pack size 1 (65mm = 3kg & 75mm = 3.5kg)

A592

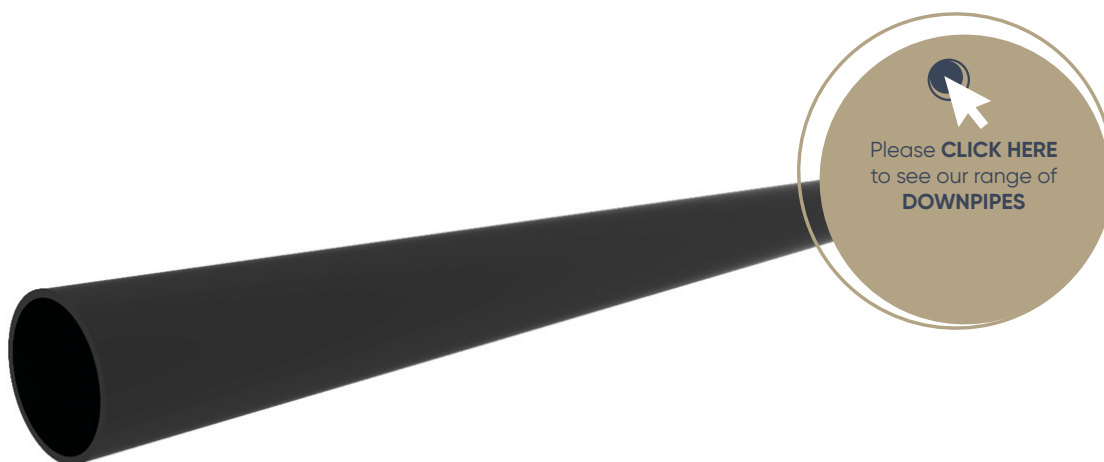
PLUS	192472	C	98.36	192475	B	107.45	—	—	—
PRIMED	191940	B	88.14	191943	B	97.20	—	—	—

135° Branches

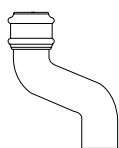
Pack size 1 (65mm = 3.3kg & 75mm = 3.6kg)

A592

PLUS	192473	C	98.36	192476	B	107.45	—	—	—
PRIMED	191941	B	88.14	191944	C	97.20	—	—	—

^ADelivery Service Category DSC (see page 3)**A** =5 DAYS **B** =5-15 DAYS **C** =15-30 DAYS

Classical Cast Iron Rainwater Pipe and Gutter Systems



Coating	SIZE Ø mm								
	65mm			75mm			100mm		
	PRODUCT CODE	^A DSC.	UNIT PRICE £	PRODUCT CODE	^A DSC.	UNIT PRICE £	PRODUCT CODE	^A DSC.	UNIT PRICE £

Offsets

75mm Projection Offset

Pack size 1 (65mm = 2.3kg, 75mm = 2.7kg & 100mm = 4.7kg)

A594

PLUS	192478	B	74.89	192485	B	74.89	192492	C	133.44
PRIMED	191946	A	64.27	191953	A	64.27	191960	B	121.28

115mm Projection Offset

Pack size 1 (65mm = 2.6kg, 75mm = 2.7kg & 100mm = 4.1kg)

A594

PLUS	192479	B	74.89	192486	C	74.89	192493	C	133.44
PRIMED	191947	A	64.27	191954	B	64.27	191961	C	123.56

150mm Projection Offset

Pack size 1 (65mm = 3.2kg, 75mm = 3.5kg & 100mm = 5.9kg)

A594

PLUS	192480	B	74.89	192487	B	74.89	192494	C	133.44
PRIMED	191948	A	64.27	191955	A	64.27	191962	B	121.28

225mm Projection Offset

Pack size 1 (65mm = 3.4kg, 75mm = 3.8kg & 100mm = 6.2kg)

A594

PLUS	192481	C	85.79	192488	B	85.79	192495	C	159.76
PRIMED	191949	A	74.80	191956	A	74.80	191963	B	146.86

305mm Projection Offset

Pack size 1 (65mm = 3.8kg, 75mm = 5kg & 100mm = 6.4kg)

A594

PLUS	192482	C	98.93	192489	C	103.31	192496	C	159.76
PRIMED	191950	A	87.70	191957	B	91.97	191964	C	149.73

380mm Projection Offset

Pack size 1 (65mm = 4.5kg, 75mm = 6.4kg & 100mm = 6.8kg)

A594

PLUS	192483	C	188.53	192490	C	194.11	192497	C	253.95
PRIMED	191951	B	174.87	191958	B	174.87	191965	C	238.77



Coating	SIZE Ø mm								
	65mm			75mm			100mm		
	PRODUCT CODE	^A DSC.	UNIT PRICE £	PRODUCT CODE	^A DSC.	UNIT PRICE £	PRODUCT CODE	^A DSC.	UNIT PRICE £

455mm Projection Offset

Pack size 1 (65mm & 75mm = 0.2kg & 100mm = 0.4kg)

A594

PLUS	192484	C	219.15	192491	C	219.15	192498	C	306.91
PRIMED	191952	B	204.78	191959	B	204.78	191966	C	295.78



Wall Bracket

Pack size 1 (65mm = 0.2kg, 75mm = 0.3kg & 100mm = 0.4kg)

A548

PLUS	192400	B	28.59	192401	A	28.78	192402	A	29.04
GALV	192301	A	24.09	192302	A	24.20	192303	A	24.46

Please note this product is **GALVANISED** and requires painting after installation



Pipe Clip with Spike

Pack size 1 (65mm = 5.9kg, 75mm = 6.8kg & 100mm = 7.7kg)

A549

GALV	223286	C	39.01	223134	C	40.81	223133	B	40.81
------	--------	---	-------	--------	---	-------	--------	---	-------

Please note this product is **GALVANISED** and requires painting after installation

Pipes and fittings outside the standard range will be considered for manufacture on a quotational basis



Drive-In Spike

Pack size 1 (65mm = 0.2kg, 75mm = 0.3kg & 100mm = 0.4kg)

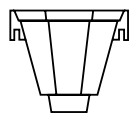
A549

PRIMED	256541	A	9.02	256542	A	9.02	—	—	—
--------	--------	---	------	--------	---	------	---	---	---

Classical Cast Iron Rainwater Pipe and Gutter Systems

Coating	SIZE Ø mm								
	65mm			75mm			100mm		
	PRODUCT CODE	^A DSC.	UNIT PRICE £	PRODUCT CODE	^A DSC.	UNIT PRICE £	PRODUCT CODE	^A DSC.	UNIT PRICE £

Flat Hopper Heads - Pack size 1



Flat Hopper Heads - 210 x 160 x 185mm

Pack size 1 (65mm = 3.9kg, 75mm = 4kg & 100mm = 6.2kg)

A750

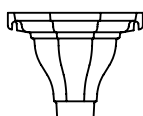
PLUS	192441	C	187.78	192442	C	187.78	—	—	—
PRIMED	191904	B	174.17	191905	C	174.17	—	—	—

Flat Hopper Heads - 250 x 215 x 215mm

Pack size 1 (65mm = 3.9kg, 75mm = 4kg & 100mm = 6.2kg)

A750

PLUS	—	—	—	—	—	—	192443	C	216.53
PRIMED	—	—	—	—	—	—	191906	C	206.41

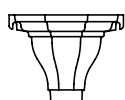


Flat Hoppers - 305 x 186 x 200mm

Pack size 1 (65mm & 75mm = 6kg)

A751

PLUS	222661	C	189.42	222663	C	189.42	—	—	—
PRIMED	222660	C	173.99	222662	B	173.99	—	—	—



Flat Hopper Corners

Pack size 1 (65mm & 75mm = 6kg)

A751

PLUS	—	—	—	236421	C	179.84	—	—	—
PRIMED	† 230093	C	177.86	234336	C	177.86	—	—	—



Box Heads - 225 x 125 x 125mm

Pack size 1 (65mm & 75mm = 3.6kg)

A841

PLUS	192444	C	266.43	192445	C	266.43	—	—	—
PRIMED	191907	C	242.08	191908	C	242.08	—	—	—

† Made to Order

Coating	SIZE Ø mm								
	65mm			75mm			100mm		
	PRODUCT CODE	Δ DSC.	UNIT PRICE £	PRODUCT CODE	Δ DSC.	UNIT PRICE £	PRODUCT CODE	Δ DSC.	UNIT PRICE £

Box Head 280 x 150 x 130mm

Pack size 1 (100mm = 5.4kg)

A842

PLUS	—	—	—	—	—	—	192446	C	359.47
PRIMED	—	—	—	—	—	—	191909	C	334.29

Rectangular Head - 300 x 250 x 200mm

Pack size 1 (65mm, 75mm & 100mm = 12.4kg)

A484

PLUS	192435	C	354.70	192436	C	354.70	192437	C	368.40
PRIMED	191897	C	314.44	191898	B	314.44	191899	B	314.44

Castellated Rectangular Head - 250 x 180 x 175mm

Pack size 1 (65mm = 6.8kg)

A485

PLUS	192438	C	327.47	—	—	—	—	—	—
PRIMED	191901	C	225.75	—	—	—	—	—	—

Rectangular Head 250 x 180 x 175mm

Pack size 1 (75mm & 100mm = 6.8kg)

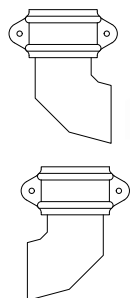
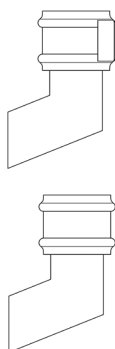
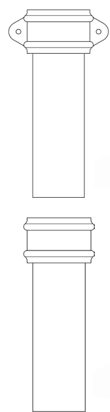
A485

PLUS	—	—	—	192439	C	255.26	192440	C	255.26
PRIMED	—	—	—	191902	B	225.75	191903	B	225.75

^ΔDelivery Service Category DSC (see page 3)

A =5 DAYS **B** =5-15 DAYS **C** =15-30 DAYS

Classical Cast Iron Rainwater Pipe and Gutter Systems



Side fittings diagrams are Right Handed



Coating	SIZE Ø mm			
	100 X75mm			
	PRODUCT CODE	±DSC.	UNIT PRICE £	

Classical Pipes 1.83m Length

Classical Pipes - Eared

Pack size 1 (100 x 75mm = 30kg)

A601

PRIMED	191968	A	417.83
--------	--------	---	--------

Classical Pipes - No Ears

Pack size 1 (100 x 75mm = 30kg)

A601

PRIMED	191967	A	410.99
--------	--------	---	--------

Front Shoe

Front Shoe - Eared

Pack size 1 (100 x 75mm = 4.8kg)

A603

PRIMED	191970	C	274.47
--------	--------	---	--------

Front Shoe - No Ears

Pack size 1 (100 x 75mm = 4.5=kg)

A603

PRIMED	191969	C	223.57
--------	--------	---	--------

Side Shoe

Right Hand Shoe - Eared

Pack size 1 (100 x 75mm = 5.4kg)

A613

PRIMED	191999	C	340.64
--------	--------	---	--------

Left Hand Shoe - Eared

Pack size 1 (100 x 75mm = 5.9=kg)

A613

PRIMED	192000	C	340.64
--------	--------	---	--------

No Ears

Pack size 1 (100 x 75mm = 5.9=kg)

A613

PRIMED	191998	A	272.44
--------	--------	---	--------

Coating	SIZE Ø mm		
	100 X75mm		
	PRODUCT CODE	^A DSC.	UNIT PRICE £

Loose Socket

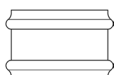


Loose Socket – Eared

Pack size 1 (100 x 75mm = 3.2=kg)

A604

PRIMED	191972	C	140.31
--------	--------	---	--------

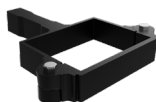
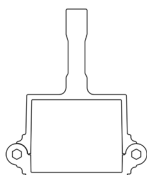


Loose Socket- No Ears

Pack size 1 (100 x 75mm = 2.5=kg)

A604

PRIMED	191971	C	133.11
--------	--------	---	--------



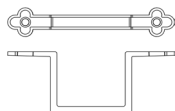
Built in Holderbat

Pack size 1 (100 x 75mm = 2kg)

A605

PRIMED	191973	C	113.56
--------	--------	---	--------

Earbands

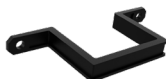
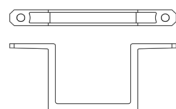


Ornamental Earbands (as Trefoil)

Pack size 1 (100 x 75mm = 1.4kg)

A606

PRIMED	191974	B	90.52
--------	--------	---	-------

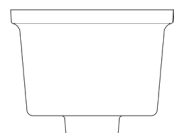


Plain Earbands

Pack size 1 (100 x 75mm = 1.6kg)

A606

PRIMED	191975	C	87.57
--------	--------	---	-------



Rectangular Head 300 x 250 x 200mm

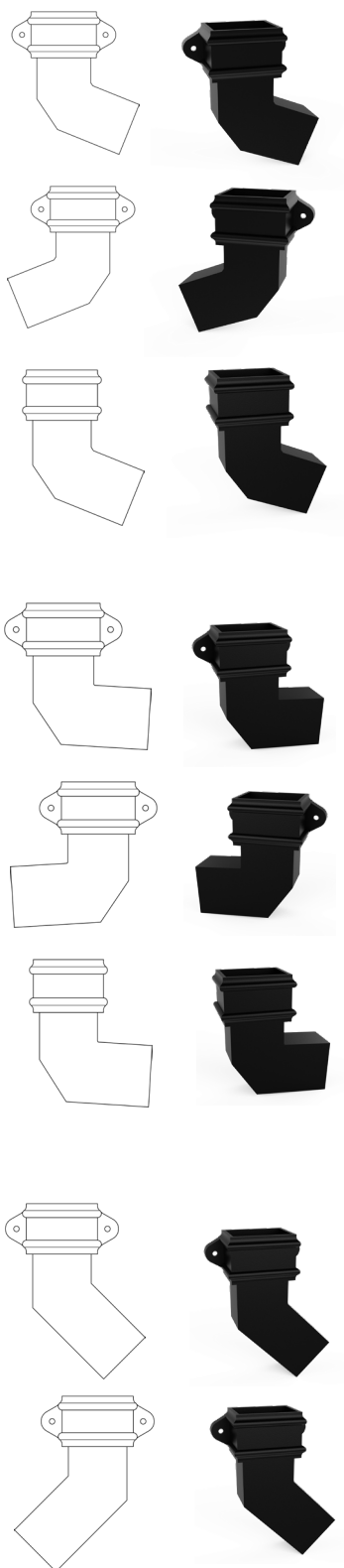
Pack size 1 (100 x 75mm = 124kg)

A484

PRIMED	191900	C	314.44
--------	--------	---	--------

Please note that Rectangular Pipes and Fittings can be supplied in the Plus finish coat on a made to order basis

Classical Cast Iron Rainwater Pipe and Gutter Systems



Coating	SIZE Ø mm			
	100 X75mm			
	PRODUCT CODE	^DSC.	UNIT PRICE £	

112.5° Side Bends

Right Hand 112.5° Side Bends - Eared

A607

Pack size 1 (100 x 75mm = 6.8kg)

PRIMED	191978	C	261.21
--------	--------	---	--------

Left Hand 112.5° Side Bends - Eared

A607

Pack size 1 (100 x 75mm = 6.8kg)

PRIMED	191977	C	261.21
--------	--------	---	--------

112.5° Side Bends - No Ears

A607

Pack size 1 (100 x 75mm = 6.6kg)

PRIMED	191976	C	206.65
--------	--------	---	--------

92.5° Side Bends

Right Hand 92.5° Side Bends - Eared

A608

Pack size 1 (100 x 75mm = 8.2kg)

PRIMED	191980	C	261.21
--------	--------	---	--------

Left Hand 92.5° Side Bends - Eared

A608

Pack size 1 (100 x 75mm = 8.2kg)

PRIMED	197170	C	261.21
--------	--------	---	--------

92.5° Side Bends - No Ears

A608

Pack size 1 (100 x 75mm = 7.8kg)

PRIMED	191979	C	206.65
--------	--------	---	--------

135° Side Bends

Right Hand 135° Side Bends - Eared

A609

Pack size 1 (100 x 75mm = 6kg)

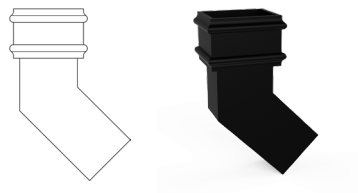
PRIMED	191983	C	261.21
--------	--------	---	--------

Left Hand 135° Side Bends - Eared

A609

Pack size 1 (100 x 75mm = 6kg)

PRIMED	191982	C	261.21
--------	--------	---	--------



Coating	SIZE Ø mm		
	100 X75mm		
	PRODUCT CODE	^A DSC.	UNIT PRICE £

135° Side Bends - No Ears

Pack size 1 (100 x 75mm = 6kg)

A609

PRIMED	PRIMED	191981	C	206.65
--------	--------	--------	---	--------

112° Front Bends

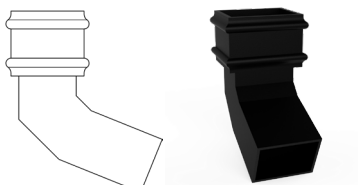


112° Front Bends - Eared

Pack size 1 (100 x 75mm = 7.7kg)

A610

PRIMED		191985	C	219.86
--------	--	--------	---	--------



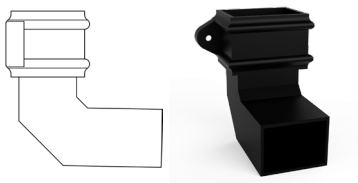
112° Front Bends - No Ears

Pack size 1 (100 x 75mm = 7.7kg)

A610

PRIMED		191984	C	196.20
--------	--	--------	---	--------

92.5° Front Bends

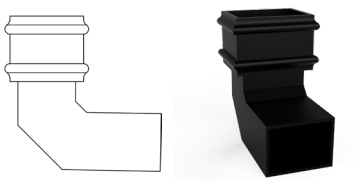


92.5° Front Bends - Eared

Pack size 1 (100 x 75mm = 7.5kg)

A610

PRIMED		191989	C	219.86
--------	--	--------	---	--------



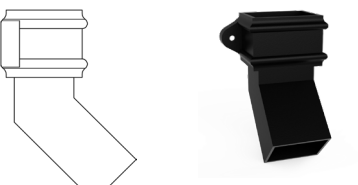
92.5° Front Bends - No Ears

Pack size 1 (100 x 75mm = 7.3kg)

A610

PRIMED		191988	C	195.64
--------	--	--------	---	--------

135° Front Bends

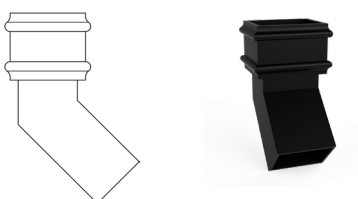


135° Front Bends - Eared

Pack size 1 (100 x 75mm = 7.1kg)

A610

PRIMED		191987	C	224.06
--------	--	--------	---	--------



135° Front Bends - No Ears

Pack size 1 (100 x 75mm = 6.9kg)

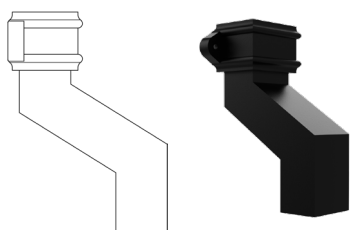
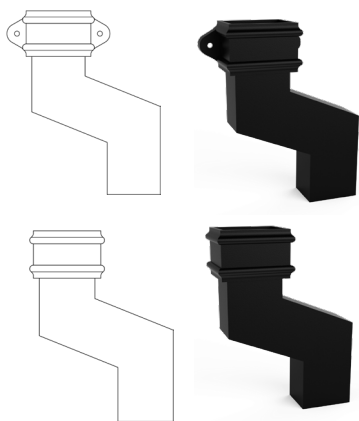
A610

PRIMED		191986	C	196.52
--------	--	--------	---	--------

^ADelivery Service Category DSC (see page 3)

A =5 DAYS **B** =5-15 DAYS **C** =15-30 DAYS

Classical Cast Iron Rainwater Pipe and Gutter Systems



Coating	SIZE Ø mm			
	100 X75mm			
	PRODUCT CODE	ΔDSC.	UNIT PRICE £	

Side Offset – Pack size 1

150mm Side Offset Projection – Eared

A611

Pack size 1 (100 x 75mm = 9kg)

PRIMED	191992	C	349.55
--------	--------	---	--------

75mm Side Offset Projection – No Ears

A611

Pack size 1 (100 x 75mm = 7.3kg)

PRIMED	191990	C	272.24
--------	--------	---	--------

115mm Side Offset Projection – No Ears

A611

Pack size 1 (100 x 75mm = 7.6kg)

PRIMED	191991	C	283.14
--------	--------	---	--------

225mm Side Offset Projection – No Ears

A611

Pack size 1 (100 x 75mm = 9kg)

PRIMED	191993	C	352.80
--------	--------	---	--------

305mm Side Offset Projection – No Ears

A611

Pack size 1 (100 x 75mm = 11kg)

PRIMED	191994	C	406.52
--------	--------	---	--------

112.5° Offsets – Pack size 1

75mm 112.5° Offset Projection—Eared

A612

Pack size 1 (100 x 75mm = 8kg)

PRIMED	191995	C	264.96
--------	--------	---	--------

150mm 112.5° Offset Projection—Eared

A612

Pack size 1 (100 x 75mm = 8.6kg)

PRIMED	191996	C	285.71
--------	--------	---	--------

225mm 112.5° Offset Projection—Eared

A612

Pack size 1 (100 x 75mm = 8.4kg)

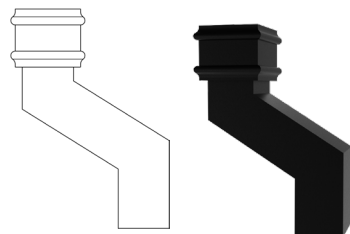
PRIMED	197171	C	367.92
--------	--------	---	--------

305mm 112.5° Offset Projection—Eared

A612

Pack size 1 (100 x 75mm = 8.4kg)

PRIMED	191997	C	393.23
--------	--------	---	--------



Coating	SIZE Ø mm		
	100 X75mm		
	PRODUCT CODE	^A DSC.	UNIT PRICE £

305mm 112.5° Offset Projection—No Ears

Pack size 1 (100 x 75mm = 11kg)

A612

PRIMED	191211	C	337.13
--------	--------	---	--------

75mm 112.5° Offset Projection—No Ears

Pack size 1 (100 x 75mm = 7.8kg)

A612

PRIMED	191208	C	207.11
--------	--------	---	--------

150mm 112.5° Offset Projection—No Ears

Pack size 1 (100 x 75mm = 8.4kg)

A612

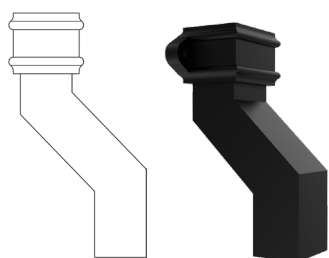
PRIMED	191209	C	228.88
--------	--------	---	--------

225mm 112.5° Offset Projection—No Ears

Pack size 1 (100 x 75mm = 8.2kg)

A612

PRIMED	191210	C	283.36
--------	--------	---	--------



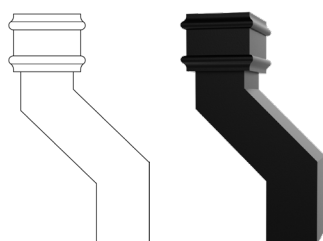
Plinth Offsets — Pack size 1

115mm Plinth Offset Projection - Eared

Pack size 1 (100 x 75mm = 8.6kg)

A615

PRIMED	192002	C	275.32
--------	--------	---	--------



115mm Plinth Offset Projection - No Ears

Pack size 1 (100 x 75mm = 8.6kg)

A615

PRIMED	192001	C	213.78
--------	--------	---	--------

Technical Calculations



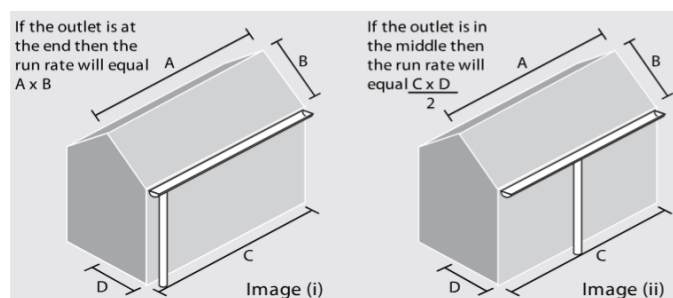
To select the size of the Classical rainwater system the following method should be used.

Rainfall intensity

For roof drainage calculations it is usual to assume a rate of rainfall of 75mm/h. Regional differences are more significant in relation to total rainfall than to peak intensities and can be ignored. Short storms of higher intensity do occur and should be taken into consideration where overflowing cannot be tolerated.

Step 1 - Calculating the area

The first stage of the calculation is determining the largest catchment area. The two most simple ways are illustrated in images (i) and (ii) taking into consideration the outlet position. Image (i), $A \times B$ = catchment area. Image (ii), $C \times D \times \text{pitch factor}$ = catchment area. where overflowing cannot be tolerated.



Step 2 - Determine run off rate

Catchment area (m²) x rainfall intensity in l/s (mm/h 3,600) = Answer 'A' (l/s)

Table 1 - Roof Pitch Factor

Roof Angle	Factor	Roof Angle	Factor
15	1.13	35	1.26
17.5	1.16	37.5	1.39
20	1.18	40	1.43
22.5	1.21	42.5	1.46
25	1.24	45	1.50
27.5	1.26	47.5	1.55
30	1.29		

Step 3

Longest gutter run to an outlet (length in mm)/ gutter depth (mm) = Answer 'B'

Step 4

Using Answer 'B', consult Table 2 for the next highest reduction factor.

Table 2—Reduction Factors

Answer 'B'	Reduction Factor
50	1.00
100	0.93
150	0.86
200	0.80

Step 5

Answer 'A' / Reduction Factor = Total flow rate in l/s.

Step 6

Using the total flow rate, consult Table 3 for the appropriate gutter profile and size.

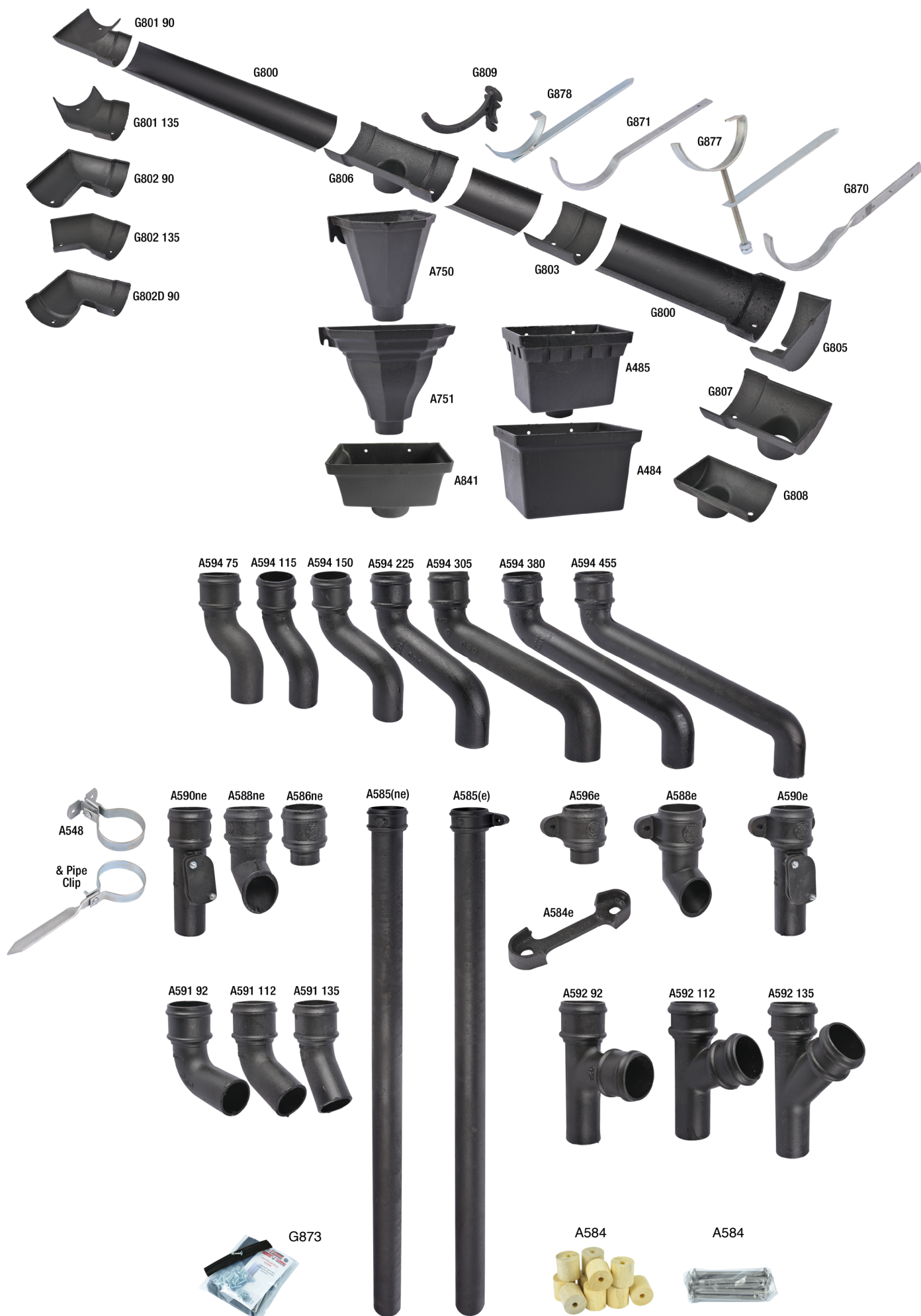
Table 3—Gutter Capacities

Gutter Type and Size						
Capacity 1/sec	Half Round	Beaded Half Round	Deep Half Round	Ogee	Moulded No. 46	Notts Ogee
3.10	—	—	—	—	150x100	—
1.75	—	—	125x75	—	—	—
1.50	—	—	—	—	—	—
1.42	—	—	—	—	125x100	—
1.40	150	—	—	—	—	—
1.39	—	—	—	—	—	—
1.24	—	—	100x75	—	—	—
1.07	—	—	—	—	—	115
0.97	—	125	—	—	—	—
0.94	125	—	—	—	—	—
0.79	115	115	—	—	—	—
0.71	—	—	—	125	—	—
0.67	—	—	—	—	100x75	—
0.59	—	100	—	115	—	—
0.53	100	—	—	—	—	—
0.41	—	—	—	100	—	—

*All gutter and pipe capacities have been tested by HR. Wallingford

Table 4—Pipe Capacities

Pipe Diameter (mm)	Capacity Litres/Second
65	2.00
75	3.00
100	7.00
75 x 75	3.30
100 x 75	4.00
100 x 100	5.90
100 x 125	7.40





Pam Building UK
Holyhead Road, Ketley,
Telford, Shropshire, TF1 5AD
Tel : 01952 262500
www.Pambuilding.co.uk