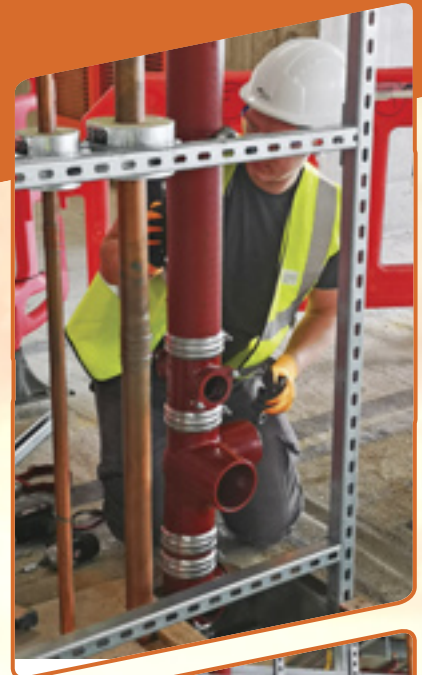


PAM Pre-Assembled Stack Solutions

NEW



Our Pre-Assembly offer will help
you save time and money on-site

PAM Pre-Assembly Stack Solutions

PAM have now launched a new pre-assembly service for the Ensign cast iron above ground drainage system.

NEW

The service offers so much more than just pre-assembly.

This service requires close collaboration between the complete supply chain. We will manage the process from product selection, bespoke stack design, manufacture, distribution with our partners and on site assistance. The results will provide a reduction of time on-site with the added assurance of the consistent product assembly.

On-site benefits

- Reduces on-site installation time by up to 60%
 - > Reducing on-site labour costs
- All stacks are air tested at the factory as standard prior to dispatch
- Stacks supplied in purpose made stillages
 - > For robust storage
 - > For easy movements on site
- Minimal on-site wastage
 - > No surplus products ordered
 - > Reduced pipe cutting
- Cast iron flexibility
 - > Connecting pipe between floors cut on site to allow for on-site variances
- Designed for one-person handling

Design benefits

- Early collaboration ensures optimised stack designs offering the best solutions
- Drawings provided for approval
- Greater level of accuracy

Material Benefits

- Cast iron pre-assembled stack solutions are fire rated to the safest level possible, A1.
- Acoustically cast iron is the quietest material on the market
 - > May not need additional insulation
- Flexible couplings with high speed assembly
 - > The stainless steel rapid coupling is nearly 3 times quicker than fusion welded joints in HDPE — (Luckins pricing guide)
- No concern about expansion when temperatures fluctuate
 - > Cast iron pre-assemblies will remain straight and not bow



We will work with you at the start of the project to identify the most effective use of products.



Your stacks will be designed from our current offer of Pre-Assembly stacks or we will design a bespoke stack for your project.



Once the drawings have been signed and we have your order, your stacks will be Pre-Assembled within 2 weeks.



Delivery can be planned to the hour



Installation will be 60% faster on-site



The Service

STAGE 1

EARLY COLLABORATION

Our team will engage with you at the early stages of the project to evaluate the possibilities and benefits of using a pre-assembly solution. Through early collaboration the team can identify any unique requirements and design a solution to meet your needs.



STAGE 2

ESTIMATION

From the designs the technical team can calculate an accurate initial estimation.

STAGE 3

STACK DESIGNS APPROVAL

PAM will provide detailed CAD drawings and 3D models of the stack arrangements for site approval. The stacks are fully compliant with BS EN 12056-2:2000 ensuring all soil stack branches are swept radius in accordance with the guidelines.

STAGE 4

SIMPLIFIED ORDERING THROUGH THE MERCHANT

The PAM pre-assembly stacks are set up with a standard product code and are ordered in the same way as standard individual Ensign components, through the merchant distributor.



STAGE 5

ASSEMBLY AND AIR TEST

The ordered stack arrangements are then assembled within 2 weeks in a purpose made stillage at the PAM manufacturing site in Telford. When each stack is fully assembled it is air pressure tested as standard to 0.5 bar for 5 minutes exceeding the requirements of BS EN 12056-2:2000, saving considerable on-site labour time. The stacks are then labelled with the relevant location reference and floor level in accordance with the drawings.



STAGE 6 LOGISTICS

The unique stillages are designed to restrict movement of the stack assemblies during transportation to the project site. The stillage design also allows for easy off-load via fork lift or hoist and have wheels fitted to facilitate movement around the site.



STAGE 7

FLEXIBILITY ON-SITE

The PAM pre-assembly soil stacks are based on a standard 1.75m length. The stacks are designed to be suitable as a one-person lift and average around 20 kg, falling well within the health and safety guidelines. To fully connect each floor a soil pipe is cut on site, which allows flexibility for any site variances.

STAGE 8

INSTALLATION SUPPORT

The PAM team will liaise with stakeholders throughout the project providing guidance and support to ensure a smooth installation.

Project Case Studies

Project: Peninsula Hotel London

Client: Fitzpatrick Mechanical Services Ltd

Application: Pre-assembled soil and waste system

Product: Ensign Soil BS EN 877



PAM developed a new pre-assembly service after mechanical and public health contractors Fitzpatrick Mechanical services had initiated the idea believing cast iron drainage stacks could be installed in this way, and significantly save on installation time and cost, on the high profile Peninsula Hotel project in London.

The project was ideally positioned for this type of install as the services were to be installed in a central core, up the 8 storey building, and Fitzpatrick believed it could save them up to 60% on the installation time.

Traditional materials such as cast iron would perhaps not immediately spring to mind for “modern methods” of construction, such as pre-assemblies and offsite construction, but Saint-Gobain PAM is proving that it's time to change perceptions about cast iron.

The benefits of offsite manufacturing have long been understood by the building and construction industry. A pre-assembled soil stack solution meets the pressures of tight deadlines, overcomes the problem of skilled labour shortages, minimises the need for storage on site and ensures consistent quality through a strict factory controlled quality inspection routine with full testing prior to dispatch.

Fitzpatrick having traditionally installed the Ensign system on many projects over recent years are fully aware of the value that cast iron as a material can offer installers. The logical next step was to move into the area of pre-assembly and through the close collaboration throughout the early stages of the Hotel project, the new service has proved its worth.

Fitzpatrick chose to use the Ensign cast iron above ground system not only because it offers superior acoustic performance compared to other materials and is also non-combustible with an A1 fire rating, but also because it is quicker to assemble than HDPE. Mechanical couplings such as the stainless steel rapid takes just seconds when compared to fusion welding, with a one bolt assembly for up to 300mm diameter and there is no specialist jointing equipment needed.

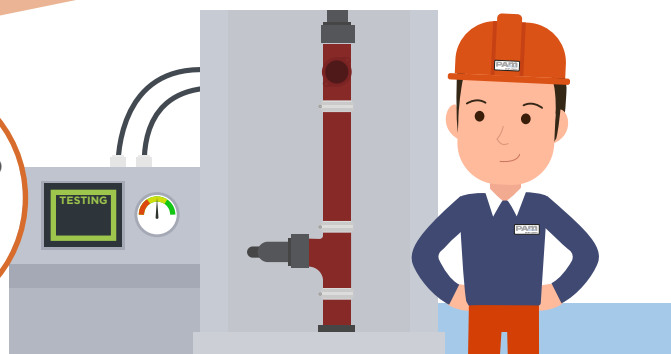


Pre-Assembled Stack Solutions

1. SAVING

Modern methods of manufacturing are now offering massive savings and with our Pre-Assembly Solution we have seen up to a **60%** saving!

60%
TIME SAVING



2. FACTORY CONTROLS

The stacks are designed, made bespoke to your needs, assembled, air-tested and inspected in our factory in Telford. The stacks will be assembled within 2 weeks from order.

3. PLANNED DELIVERIES

With our distribution partners we can plan delivery of your stacks to suit your build programme.



4. SITE EFFICIENCY

When installing them on site you will become more efficient than traditional methods.



5. SITE SAFETY AND SPACE

Less space and time will be required on site, which will not only help with social distancing, but will also reduce the need for cutting and storing products on-site.



6. IMPROVED RESULTS

- ✓ Reduced time on site
- ✓ Improved quality
- ✓ Reduced environmental impact



Scan with your phone or click on the QR code above to see the full video on YouTube!



Please contact your regional technical sales manager for details



Scan or click the QR code to go straight to our price list

For prices, please see our price list or contact our Technical sales team on 01952 262529

All products marked with a * can be made to different lengths and configurations, so these are guide prices. Please give us a call to get a price and spec to meet your projects needs!

We now have another 20 designs, so contact the technical team if we don't have the design you need



STACK DESCRIPTION	SIZE Ø mm	STACK WEIGHT KG	ABOVE GROUND ▲ PRODUCT CODE	QTY
100mm Pipe Stack with Access Pipe				



	100	15.9	SA002 270478	
Stack Assembly Contains:				
100mm Pipe Cut to 1,500mm*	EP000	1		
100mm Rapid NG S/S Coupling	EC002NG	2		
100mm Round Access Pipe	EF014	1		

STACK DESCRIPTION	SIZE Ø mm	STACK WEIGHT KG	ABOVE GROUND ▲ PRODUCT CODE	QTY
100mm Pipe Stack with Access Pipe and High Level Boss Pipe				



	100	17.7	SA005 270329	
Stack Assembly Contains:				
100mm Pipe Cut to Suit*	EP000	1		
100mm Pipe Cut to 425mm*	EP000	1		
100mm Rapid NG S/S Coupling	EC002NG	4		
100mm Round Access Pipe	EF014	1		
100mm Single Boss Pipe	EF090	1		

100mm Pipe Stack with Access Pipe and Low Level Double Opposed Boss Pipe				
--	--	--	--	--



	100	17.8	SA006 271078	
Stack Assembly Contains:				
100mm Pipe Cut to Suit*	EP000	1		
100mm Rapid NG S/S Coupling	EC002NG	3		
100mm Round Access Pipe	EF014	1		
100mm Double Opposed Boss Pipe	EF091	1		

100mm Pipe Stack with Access Pipe and Low Level Boss Pipe				
---	--	--	--	--



	100	17.2	SA003 271076	
Stack Assembly Contains:				
100mm Pipe Cut to 1,350mm*	EP000	1		
100mm Rapid NG S/S Coupling	EC002NG	3		
100mm Round Access Pipe	EF014	1		
100mm Single Boss Pipe	EF090	1		

100mm Pipe Stack with Access Pipe and High Level Double Opposed Boss Pipe				
---	--	--	--	--



	100	18.3	SA007 271079	
Stack Assembly Contains:				
100mm Pipe Cut to Suit*	EP000	1		
100mm Pipe Cut to 425mm*	EP000	1		
100mm Rapid NG S/S Coupling	EC002NG	4		
100mm Round Access Pipe	EF014	1		
100mm Double Opposed Boss Pipe	EF091	1		

100mm Pipe Stack with Access Pipe and High and Low Level Single Boss Pipe				
---	--	--	--	--



	100	19.1	SA004 271077	
Stack Assembly Contains:				
100mm Pipe Cut to Suit*	EP000	1		
100mm Pipe Cut to 270mm*	EP000	1		
100mm Rapid NG S/S Coupling	EC002NG	5		
100mm Round Access Pipe	EF014	1		
100mm Single Boss Pipe	EF090	2		

100mm Pipe Stack with Access Pipe and High and Low Level Double Opposed Boss Pipe				
---	--	--	--	--



	100	21.5	SA008 271080	
Stack Assembly Contains:				
100mm Pipe Cut to Suit*	EP000	1		
100mm Pipe Cut to 270mm*	EP000	1		
100mm Rapid NG S/S Coupling	EC002NG	5		
100mm Round Access Pipe	EF014	1		
100mm Double Opposed Boss Pipe	EF091	2		



Scan or click the QR code to go straight to our price list

Ensign Pre-assembled Stack Solutions

			ABOVE GROUND ▲	
STACK DESCRIPTION	SIZE Ø mm	STACK WEIGHT KG	PRODUCT CODE	QTY
100mm Pipe Stack with Access Pipe, High Level Single Boss Pipe, Single Radius Branch and Low Level Single Boss Pipe				



		SA009	
100	20.2	271081	
Stack Assembly Contains:			
100mm Pipe Cut to 925mm*	EP000		1
100mm Rapid NG S/S Coupling	EC002NG		5
100mm Round Access Pipe	EF014		1
100mm Single Boss Pipe	EF090		2
100 x 100mm Radius Branch x 88°	EF06R		1

			ABOVE GROUND ▲	
STACK DESCRIPTION	SIZE Ø mm	STACK WEIGHT KG	PRODUCT CODE	QTY
100mm Pipe Stack with Access, High Level Double Opposed Boss Pipe, Double Radius Branch and Low Level Double Opposed Boss Pipe				



		SA013	
100	22.3	271084	
Stack Assembly Contains:			
100mm Pipe Cut to 925mm*	EP000		1
100mm Rapid NG S/S Coupling	EC002NG		5
100mm Round Access Pipe	EF014		1
100mm Double Opposed Boss Pipe	EF091		2
100 x 100 x 100mm Double Radius Branch x 88°	EF010R		1

100mm Pipe Stack with Access Pipe, High Level Single Boss Pipe and Single Radius Branch				
---	--	--	--	--



		SA010	
100	19.3	271082	
Stack Assembly Contains:			
100mm Pipe Cut to 925mm*	EP000		1
100mm Pipe Cut to 155mm*	EP000		1
100mm Rapid NG S/S Coupling	EC002NG		5
100mm Round Access Pipe	EF014		1
100mm Single Boss Pipe	EF090		1
100 x 100mm Radius Branch x 88°	EF06R		1

100mm Pipe Stack with Access, High Level Single Boss Pipe, Double Radius Branch and Low Level Double Opposed Boss Pipe				
--	--	--	--	--



		SA014	
100	21.7	271085	
Stack Assembly Contains:			
100mm Pipe Cut to 925mm*	EP000		1
100mm Rapid NG S/S Coupling	EC002NG		5
100mm Round Access Pipe	EF014		1
100mm Single Boss Pipe	EF090		1
100mm Double Opposed Boss Pipe	EF091		1
100 x 100 x 100mm Double Radius Branch x 88°	EF010R		1

100mm Pipe Stack with Access Pipe, Single Radius Branch and Low Level Single Boss Pipe				
--	--	--	--	--



		SA011	
100	18.8	271083	
Stack Assembly Contains:			
100mm Pipe Cut to 1,055mm*	EP000		1
100mm Rapid NG S/S Coupling	EC002NG		4
100mm Round Access Pipe	EF014		1
100mm Single Boss Pipe	EF090		1
100 x 100mm Radius Branch x 88°	EF06R		1

100mm Pipe Stack with Access, High Level Double Opposed Boss Pipe, Double Radius Branch and Low Level Single Boss Pipe				
--	--	--	--	--



		SA015	
100	21.7	271086	
Stack Assembly Contains:			
100mm Pipe Cut to 925mm*	EP000		1
100mm Rapid NG S/S Coupling	EC002NG		5
100mm Round Access Pipe	EF014		1
100mm Single Boss Pipe	EF090		1
100mm Double Opposed Boss Pipe	EF091		1
100 x 100 x 100mm Double Radius Branch x 88°	EF010R		1

100mm Pipe Stack with Access Pipe and Single Radius Branch				
--	--	--	--	--



		SA012	
100	18.0	270330	
Stack Assembly Contains:			
100mm Pipe Cut to Suit*	EP000		1
100mm Pipe Cut to 155mm*	EP000		1
100mm Rapid NG S/S Coupling	EC002NG		4
100mm Round Access Pipe	EF014		1
100 x 100mm Radius Branch x 88°	EF06R		1

100mm Pipe Stack with Access, High Level Double Opposed Boss Pipe and Double Radius Branch				
--	--	--	--	--



		SA016	
100	20.8	271087	
Stack Assembly Contains:			
100mm Pipe Cut to 925mm*	EP000		1
100mm Pipe Cut to 155mm*	EP000		1
100mm Rapid NG S/S Coupling	EC002NG		5
100mm Round Access Pipe	EF014		1
100mm Double Opposed Boss Pipe	EF091		1
100 x 100 x 100mm Double Radius Branch x 88°	EF010R		1



Scan or click the QR code to go straight to our price list

For prices, please see our price list or contact our Technical sales team on 01952 262529

			ABOVE GROUND ▲	
STACK DESCRIPTION	SIZE Ø mm	STACK WEIGHT KG	PRODUCT CODE	QTY
100mm Pipe Stack with Access, High Level Boss Pipe, Double Radius Branch and Low Level Single Boss Pipe				



SA017

100	22.3	271088		
Stack Assembly Contains:				
100mm Pipe Cut to 925mm*	EP000	1		
100mm Rapid NG S/S Coupling	EC002NG	5		
100mm Round Access Pipe	EF014	1		
100mm Single Boss Pipe	EF090	2		
100 x 100 x 100mm Double Radius Branch x 88°	EF010R	1		

			ABOVE GROUND ▲	
STACK DESCRIPTION	SIZE Ø mm	STACK WEIGHT KG	PRODUCT CODE	QTY
100mm Pipe Stack with Access, High Level Double 90° Boss Pipe, Double Corner Radius Branch and Low Level Double Opposed Boss Pipe				



SA021

100	22.7	271092		
Stack Assembly Contains:				
100mm Pipe Cut to 925mm*	EP000	1		
100mm Rapid NG S/S Coupling	EC002NG	5		
100mm Round Access Pipe	EF014	1		
100mm Double 90° Boss Pipe	EF092	1		
100mm Double Opposed Boss Pipe	EF091	1		
100 x 100 x 100mm Double Corner Radius Branch x 88°	EF035R	1		

100mm Pipe Stack with Access, High Level Double 90° Boss Pipe, Double Corner Radius Branch and Low Level Double 90° Boss Pipe				
---	--	--	--	--



SA018

100	22.9	271089		
Stack Assembly Contains:				
100mm Pipe Cut to 925mm*	EP000	1		
100mm Rapid NG S/S Coupling	EC002NG	5		
100mm Round Access Pipe	EF014	1		
100mm Double 90° Boss Pipe	EF092	2		
100 x 100 x 100mm Double Radius Branch x 88°	EF035R	1		

100mm Pipe Stack with Access, High Level Double Opposed Boss Pipe, Double Corner Radius Branch and Low Level Double 90° Boss Pipe				
---	--	--	--	--



SA022

100	22.7	271093		
Stack Assembly Contains:				
100mm Pipe Cut to 925mm*	EP000	1		
100mm Rapid NG S/S Coupling	EC002NG	5		
100mm Round Access Pipe	EF014	1		
100mm Double 90° Boss Pipe	EF092	1		
100mm Double Opposed Boss Pipe	EF091	1		
100 x 100 x 100mm Double Corner Radius Branch x 88°	EF035R	1		

100mm Pipe Stack with Access, High Level Double Corner 90° Boss Pipe and Double Corner Radius Branch				
--	--	--	--	--



SA019

100	21.2	271090		
Stack Assembly Contains:				
100mm Pipe Cut to 925mm*	EP000	1		
100mm Pipe Cut to 155mm*	EP000	1		
100mm Rapid NG S/S Coupling	EC002NG	5		
100mm Round Access Pipe	EF014	1		
100mm Double 90° Boss Pipe	EF092	1		
100 x 100 x 100mm Double Corner Radius Branch x 88°	EF035R	1		

100mm Pipe Stack with Access, High Level Single Boss Pipe, Double Corner Radius Branch and Low Level Single Boss Pipe				
---	--	--	--	--



SA023

100	21.3	271094		
Stack Assembly Contains:				
100mm Pipe Cut to 925mm*	EP000	1		
100mm Rapid NG S/S Coupling	EC002NG	5		
100mm Round Access Pipe	EF014	1		
100mm Single Boss Pipe	EF090	2		
100 x 100 x 100mm Double Corner Radius Branch x 88°	EF035R	1		

100mm Pipe Stack with Access, Double Corner Radius Branch and Low Level Double 90° Boss Pipe				
--	--	--	--	--



SA020

100	21.2	271091		
Stack Assembly Contains:				
100mm Pipe Cut to Suit*	EP000	1		
100mm Rapid NG S/S Coupling	EC002NG	4		
100mm Round Access Pipe	EF014	1		
100mm Double 90° Boss Pipe	EF092	1		
100 x 100 x 100mm Double Corner Radius Branch x 88°	EF035R	1		

100mm Pipe Stack with Access and Double Corner Radius Branch				
--	--	--	--	--



SA024

100	19.1	271095		
Stack Assembly Contains:				
100mm Pipe Cut to Suit*	EP000	1		
100mm Pipe Cut to 155mm*	EP000	1		
100mm Rapid NG S/S Coupling	EC002NG	4		
100mm Round Access Pipe	EF014	1		
100 x 100 x 100mm Double Corner Radius Branch x 88°	EF035R	1		

* price based on length for this design, but our Technical Team can price up any length to suit your project.

* price based on length for this design, but our Technical Team can price up any length to suit your project.



Scan or click the QR code to go straight to our price list

Ensign Pre-assembled Stack Solutions

* price based on length for this design, but our Technical Team can price up any length to suit your project.

			ABOVE GROUND ▲	
STACK DESCRIPTION	SIZE Ø mm	STACK WEIGHT KG	PRODUCT CODE	QTY
100mm Pipe Stack with Access and Double Radius Branch				



SA025

100

18.9

271096

Stack Assembly Contains:

100mm Pipe Cut to Suit*	EP000	1
100mm Pipe Cut to 155mm*	EP000	1
100mm Rapid NG S/S Coupling	EC002NG	4
100mm Round Access Pipe	EF014	1
100 x 100 x 100mm Double Radius Branch x 88°	EF010R	1

			ABOVE GROUND ▲	
STACK DESCRIPTION	SIZE Ø mm	STACK WEIGHT KG	PRODUCT CODE	QTY
100mm Pipe Stack with Access, High Level Double 90° Boss Pipe, Double Corner Radius Branch and Multi-Waste Manifold				



SA029

100

29.4

271101

Stack Assembly Contains:

100mm Pipe Cut to Suit*	EP000	1
100mm Rapid NG S/S Coupling	EC002NG	5
100mm Round Access Pipe	EF014	1
100mm Double 90° Boss Pipe	EF092	1
100 x 100 x 100mm Double Corner Radius Branch x 88°	EF035R	1
100mm Multi-Waste Manifold Connector	EF095	1

100mm Pipe Stack with Access, Double Radius Branch and Multi-Waste Manifold				
---	--	--	--	--



SA026

100

26.3

271097

Stack Assembly Contains:

100mm Pipe Cut to Suit*	EP000	1
100mm Rapid NG S/S Coupling	EC002NG	4
100mm Round Access Pipe	EF014	1
100 x 100 x 100mm Double Radius Branch x 88°	EF010R	1
100mm Multi-Waste Manifold Connector	EF095	1

100mm Pipe Stack with Access, High Level Double 90° Boss Pipe, Double Corner Radius Branch and Multi-Waste Corner Manifold				
--	--	--	--	--



SA030

100

27.5

271102

Stack Assembly Contains:

100mm Pipe Cut to Suit*	EP000	1
100mm Rapid NG S/S Coupling	EC002NG	5
100mm Round Access Pipe	EF014	1
100mm Double 90° Boss Pipe	EF092	1
100 x 100 x 100mm Double Corner Radius Branch x 88°	EF035R	1
100mm Multi-Waste Corner Manifold Connector	EF099	1

100mm Pipe Stack with Access, Double Radius Corner Branch and Multi-Waste Manifold				
--	--	--	--	--



SA027

100

26.5

271099

Stack Assembly Contains:

100mm Pipe Cut to Suit*	EP000	1
100mm Rapid NG S/S Coupling	EC002NG	4
100mm Round Access Pipe	EF014	1
100 x 100 x 100mm Double Corner Radius Branch x 88°	EF035R	1
100mm Multi-Waste Manifold Connector	EF095	1

100mm Pipe Stack with Access, High Level Double Opposed Boss Pipe, Double Radius Branch and Multi-Waste Corner Manifold				
---	--	--	--	--



SA031

100

27.1

271103

Stack Assembly Contains:

100mm Pipe Cut to Suit*	EP000	1
100mm Rapid NG S/S Coupling	EC002NG	5
100mm Round Access Pipe	EF014	1
100mm Double Opposed Boss Pipe	EF091	1
100 x 100 x 100mm Double Radius Branch x 88°	EF010R	1
100mm Multi-Waste Corner Manifold Connector	EF099	1

100mm Pipe Stack with Access, High Level Double Opposed Boss Pipe, Double Radius Branch and Multi-Waste Manifold				
--	--	--	--	--



SA028

100

29.0

271100

Stack Assembly Contains:

100mm Pipe Cut to Suit*	EP000	1
100mm Rapid NG S/S Coupling	EC002NG	5
100mm Round Access Pipe	EF014	1
100mm Double Opposed Boss Pipe	EF091	1
100 x 100 x 100mm Double Radius Branch x 88°	EF010R	1
100mm Multi-Waste Manifold Connector	EF095	1

100mm Pipe Stack with Access, Double Radius Branch and Multi-Waste Corner Manifold				
--	--	--	--	--



SA032

100

25.1

271104

Stack Assembly Contains:

100mm Pipe Cut to Suit*	EP000	1
100mm Rapid NG S/S Coupling	EC002NG	4
100mm Round Access Pipe	EF014	1
100 x 100 x 100mm Double Radius Branch x 88°	EF010R	1
100mm Multi-Waste Corner Manifold Connector	EF099	1



Scan or click the QR code to go straight to our price list

* price based on length for this design, but our Technical Team can price up any length to suit your project.

For prices, please see our price list or contact our Technical sales team on 01952 262529

			ABOVE GROUND ▲	
STACK DESCRIPTION	SIZE Ø mm	STACK WEIGHT KG	PRODUCT CODE	QTY
100mm Pipe Stack with Access, Double Corner Radius Branch and Multi-Waste Corner Manifold				



		SA033	
100	25.3	271105	
Stack Assembly Contains:			
100mm Pipe Cut to Suit*	EP000	1	
100mm Rapid NG S/S Coupling	EC002NG	4	
100mm Round Access Pipe	EF014	1	
100 x 100 x 100mm Double Corner Radius Branch x 88°	EF035R	1	
100mm Multi-Waste Corner Manifold Connector	EF099	1	

			ABOVE GROUND ▲	
STACK DESCRIPTION	SIZE Ø mm	STACK WEIGHT KG	PRODUCT CODE	QTY
100mm Pipe Stack with High Level Single Branch x 50mm				



		SA037	
100	16.2	271108	
Stack Assembly Contains:			
100mm Pipe Cut to Suit*	EP000	1	
100mm Pipe Cut to 450mm*	EP000	1	
100mm Rapid NG S/S Coupling	EC002NG	3	
100 x 50mm Single Branch x 45°	EF006	1	

100mm Pipe Stack with Access, Single Radius Branch and Multi-Waste Corner Manifold				
--	--	--	--	--



		SA034	
100	24.2	271106	
Stack Assembly Contains:			
100mm Pipe Cut to Suit*	EP000	1	
100mm Rapid NG S/S Coupling	EC002NG	4	
100mm Round Access Pipe	EF014	1	
100 x 100mm Radius Branch x 88°	EF06R	1	
100mm Multi-Waste Corner Manifold Connector	EF099	1	

100mm Pipe Stack with Access Pipe and High Level Single Branch x 50mm				
---	--	--	--	--



		SA038	
100	17.8	271109	
Stack Assembly Contains:			
100mm Pipe Cut to Suit*	EP000	1	
100mm Pipe Cut to 185mm*	EP000	1	
100mm Rapid NG S/S Coupling	EC002NG	4	
100mm Round Access Pipe	EF014	1	
100 x 50mm Single Branch x 45°	EF006	1	

100mm Pipe Stack with Access, High Level Single Boss Pipe, Single Radius Branch and Multi-Waste Corner Manifold				
---	--	--	--	--



		SA035	
100	22.5	271107	
Stack Assembly Contains:			
100mm Pipe Cut to Suit*	EP000	1	
100mm Rapid NG S/S Coupling	EC002NG	5	
100mm Round Access Pipe	EF014	1	
100mm Single Boss Pipe	EF090	1	
100 x 100mm Radius Branch x 88°	EF06R	1	
100mm Multi-Waste Corner Manifold Connector	EF099	1	

100mm Pipe Stack with High Level Single Branch x 100mm				
--	--	--	--	--



		SA039	
100	17.0	271111	
Stack Assembly Contains:			
100mm Pipe Cut to Suit*	EP000	1	
100mm Pipe Cut to 450mm*	EP000	1	
100mm Rapid NG S/S Coupling	EC002NG	3	
100 x 100mm Single Branch x 45°	EF006	1	

100mm Pipe Stack with Access and Multi-Waste Corner Manifold				
--	--	--	--	--



		SA036	
100	20.2	270328	
Stack Assembly Contains:			
100mm Pipe Cut to Suit*	EP000	1	
100mm Rapid NG S/S Coupling	EC002NG	3	
100mm Round Access Pipe	EF014	1	
100mm Multi-Waste Corner Manifold Connector	EF099	1	





BIM READY

Saint-Gobain PAM aims to ease the burden on developers, specifiers and contractors in the early stages of construction by providing two levels of BIM library and supporting elements.

The new releases include a full-data object library, a platform that provides supporting information and free individual BIM files of all products and systems.

These include a BS EN 877:1999+A1:2006 'Generic Cast Iron' content package for use in early design stages, with fittings parametrically modelled, and in standard geometric settings. The files contain only the most vital information, reducing the time and effort required to create early stage plans. These 'data-light' designs can also be overwritten with the full data specification libraries without issue, speeding up later stages of development that require more detailed plans streamlining conversion from design to as built work flow.

The PAM BIM Libraries are designed to aid the data transition between Public Health consultant's and Main Contract MEP design engineers, creating a leaner process that reduces design time. As the transitions usually require more explicit data being added to models, Saint-Gobain PAM are also currently creating plugins to quickly add the full data, either automatically by system type, or through floor level and manual area selection.

By providing small file sizes in the generic content, it will make it easier for early stage specification in BIM and will speed up the whole planning process; this in turn will create measurable cost and time savings for our customers.

Available content



BS EN 877:1999 +A1:2006
CAST IRON
GENERIC BIM
LIBRARY



BS 437:2008
CAST IRON
GENERIC BIM
LIBRARY



**ENSIGN SOIL
& EEZI-FIT BIM
LIBRARY**
BS EN
877:1999
+A1:2006



**ENSIGN
DRAIN BIM
LIBRARY**
BS EN
877:1999
+A1:2006



**TIMESAVER
DRAIN BIM
LIBRARY**
BS 437:2008

BIM SERVICES

PAM has been developing BIM level 2 libraries in Revit for its ranges of soil and drain products.

Call our Technical team for further help:
01952 262529



SCAN OR CLICK
ON THE QR CODE
TO SEE HOW
EFFECTIVE IT IS
TO DESIGN IN REVIT
WITH OUR PRE-
ASSEMBLY LIBRARY



Ensign cast iron drainage system



Ensign is the market leading cast iron above ground drainage system kitemark approved to BS EN 877.



Major Benefits:

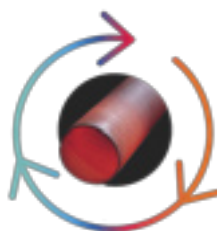
Fire Safety

- Ensign is fire rated to the safest level possible = A1 in accordance with BS EN 13501-1
- New Requirement B4: External fire spread
 - > Full compliance with the latest Building Regulations Doc B (Fire Safety)
 - > On any residential building over 18m high. All materials which become part of an external wall or specified attachment
 - > To be classified minimum of non-combustible level A2 s1,do.
- Ensign cast iron requires no special fire protection saving time and cost
 - > Non-combustible—will not fuel a fire
 - > A1 rating = minimal smoke emission—the biggest killer in the first 30 minutes of any fire
 - > Installed using iron or steel brackets cast iron stacks will not collapse
 - > Cast iron will not produce molten droplets unlike HDPE that can potentially spread fire down a building

Acoustics

- Acoustically cast iron is the quietest material on the market
 - > Outperforms acoustic plastic systems by up to 8 dB(A)
 - > Saves on acoustic insulation
- Expansion co-efficient is virtually the same as concrete
 - > No requirement for expansion joints like for HDPE
 - > Simplifies installation
- Less bracketary saving installation cost
 - > Simple brackets—no complicated rail systems

Ensign Above Ground Pipe





Ensign Cast Iron?

- High quality pipes manufactured by PAM in France using the De Lavaud process
 - > Pipe has greater impact and crush resistance
 - > Its surface hardness is reduced making it much easier to cut on site.
- High performing mechanical couplings that can perform from 0.5 bar to 5 bar
 - > Stainless steel single bolt couplings for speed and simplicity of installation
- Strong robust ductile iron brackets
 - > Acoustic dampeners can be fitted for the ultimate acoustic performance
- The most comprehensive range of swept branches in compliance with BS EN 12056 part 2 and Public Health best practice
- The most optimised range in cast iron for waste connection fittings
 - > Compression fit or BSP threaded boss pipes
 - > Single and double swept long tail branches with boss options
 - > Multi-waste manifold connectors in 100 and 150mm
 - > Short standard manifold
 - > New multi-waste manifold for low level connection 6 x 2" BSP inlets in 100 and 150mm diameter with extended spigots
 - > New corner manifold with 4 x 2" BSP inlets with extended spigot in 100mm



NEW

For more information on the NEW Pre-assembly Service contact your regional technical sales manager or the PAM technical team:
Tel: 01952 262529 Email: technical.pam@saint-gobain.com

10 Year Warranty

We use the PAMCheck app to record the manufacturing and installation process to achieve your 10 year PAM Warranty.



Manufacture

Our Pre-assembly is manufactured to specification at our Telford site then scanned into the PAMCheck app after passing inspection.

1



Delivery

We work with your distribution partner to provide delivery to your site at the agreed time.

2



Installation

The stacks are installed and checked, then signed off in the App.

3



PAMCheck Dashboard

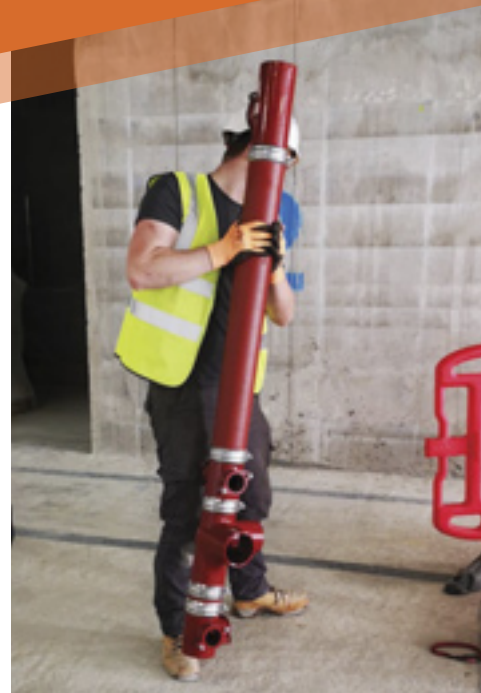
All stages are recorded so the production data and the installation data is linked and then a final project report is created.

4

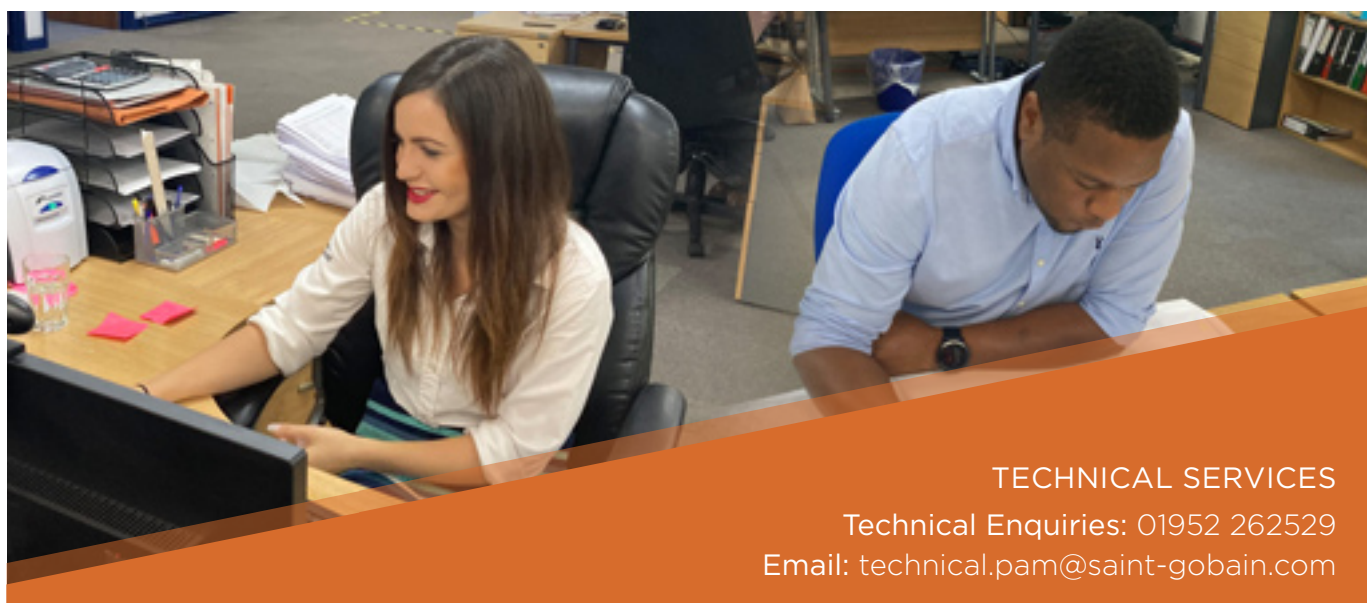


Please contact our Technical Team for further information:
01952 262529

5



CLICK OR SCAN THE
QR CODE TO FOLLOW US
ON YOUTUBE AND FIND
OUT HOW USING OUR
PRE-ASSEMBLY
SOLUTION CAN
SAVE YOU TIME
AND MONEY



TECHNICAL SERVICES

Technical Enquiries: 01952 262529

Email: technical.pam@saint-gobain.com

Do you want your projects to be more effective and use the latest products and services?

Our Technical Team is here to help you get the best from our products and services to ensure you deliver your project in the best way for the environment, site efficiency and at the best total project price. Please contact our team to see how they can help you today. Below is an example of the typical services and timescales that they can offer.

Orders & Customer Services: 01952 262508 Email: orders.pam@saint-gobain.com



Please visit our website:

www.pamdrainage.co.uk to
download electronic versions
or to request hard copies
of any of our brochures.

Orders & Customer Services:

Tel: 01952 262508

Email: orders.pam@saint-gobain.com

Technical Sales Enquiries

Tel: 01952 262529

Email: technical.pam@saint-gobain.com

Saint-Gobain PAM UK

Sinclair Works

Station Road

Ketley

Telford

Shropshire

TF1 5AD

Tel: 01952 262500

Quality Assurance



The information given in this literature is, to the best of our knowledge, correct at the time of going to print. However, Saint-Gobain PAM UK is constantly looking at ways of improving their products and services and therefore reserve the right to change, without prior notice, any of the data contained in this publication. Any orders placed will be subject to our Standard Conditions of Sale, available on request.

© 2021 Saint-Gobain PAM UK.

To see how you can
SAVE 60%
TIME ON SITE
please contact your Sales
Manager or our Technical Team.

Sales Managers

CLICK OR SCAN THE QR CODE

TO FIND YOUR LOCAL SALES MANAGER

TEL: 01952 262500



Technical Team

General technical enquiries and stock checking

technical.pam@saint-gobain.com | Tel: 01952 262529

Customer Service Team

Available to help you Mon to Fri between 8.30am-5pm

Order processing and order updates

orders.pam@saint-gobain.com | Tel: 01952 262508



After Sales

If you have concerns about anything after
you've received your order, please let us know

01952 262520

aftersales.pam@saint-gobain.com

Visit our new website



For further information please
visit our new website at
www.pamdrainage.co.uk

and find...

- Links for technical help
- Quick access to our contact details
- Access to all product data sheets

Website

CLICK OR
SCAN THE
QR CODE
BELOW
TO VISIT OUR
WEBSITE



LinkedIn

CLICK OR
SCAN THE
QR CODE TO
FOLLOW US
ON LINKED IN



YouTube

CLICK OR
SCAN THE
QR CODE TO
FOLLOW US
ON YOUTUBE

