

HAZ METAL FIXING SYSTEMS

Your Fixing Systems Specialist



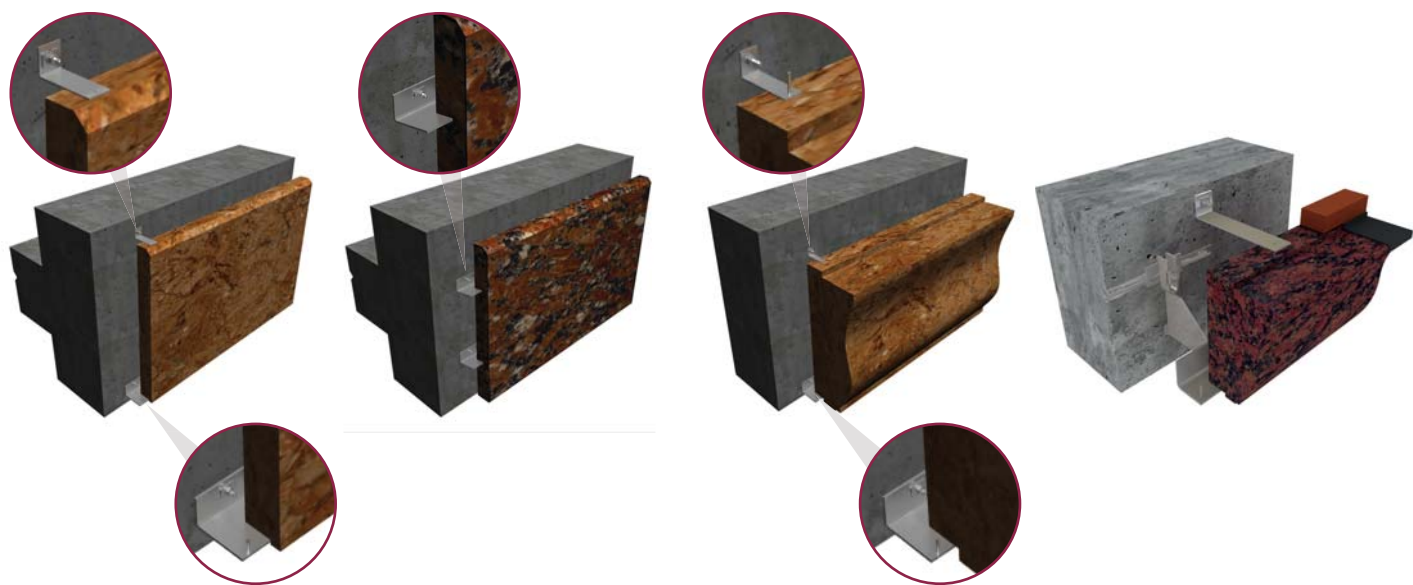
HAZ Corbel Supports

Product Brochure
HAZ-BR-CBL-EN/08.18

HAZ Corbel Supports - Overview

Fixing systems for the installation of high load natural stone or reconstructed stone are available in a variety of types and size ranges. The actual system proposal will be made according to the technical requirements of the project. The use of these fixing systems is for high load coping and cornice stones. Load bearing and restraint anchors are used to install the slabs on to different wall backings using a variety of attachment methods.

Application Examples



Heavy Load Bearing Anchors

HMS-UP



HMCS-SB/P



HMCS-DB



HAMF



Restraint Anchors

HA-RST



HA-RST/K



HA-RST/K B



HAZ21



Periscope Anchors

HPC1



HPC2



HPC3



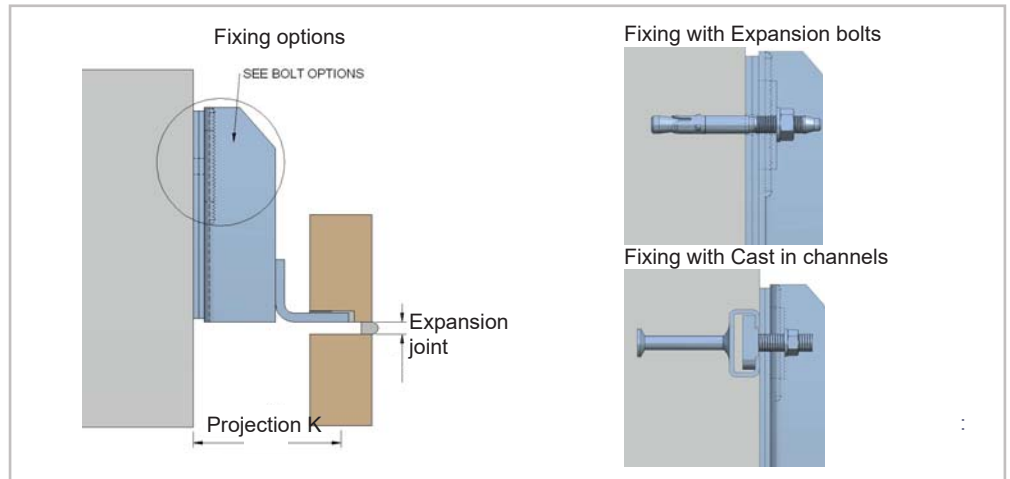
HPC4



Load Bearing Anchors

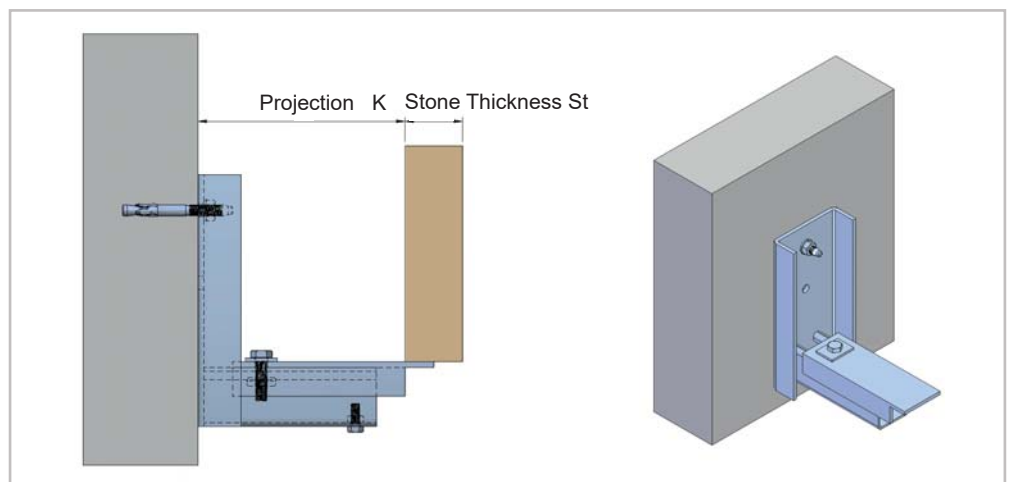
Heavy Duty brackets used for load bearing are fixed on to load bearing concrete walls. The two main methods that are usually used for attachments are either by anchor bolts or anchor channels.

Both anchor channels and anchors bolts specified according to the load requirements of the projects and must be structurally verified according to the loads concerned on the project.



Heavy Duty brackets have limited adjustability to take the irregularities of the walls. An accepted method is use of shims to adjust the projection sized by up to 5 mm.

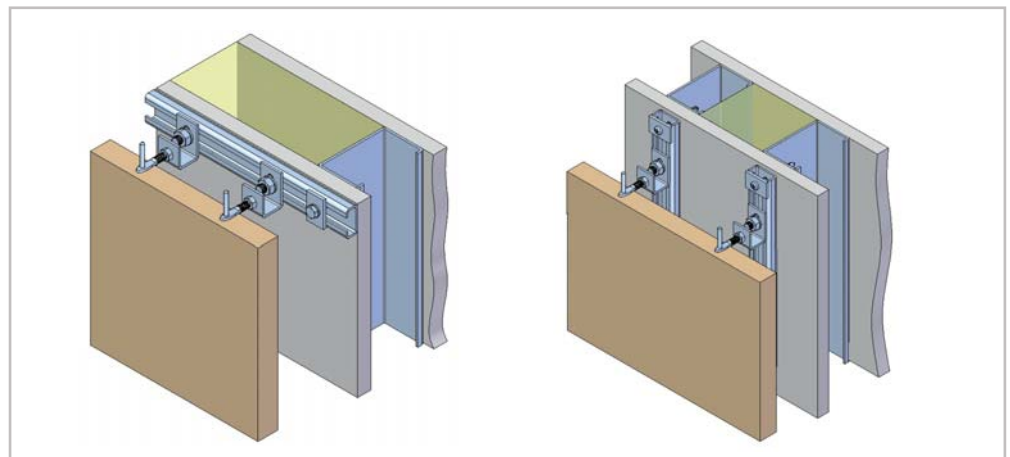
Greater adjustability can be achieved by special design as illustrated on the diagram on the right. An adjustable plate can be adapted to adjust in and out the distance of the projection size.



Restraining Brackets

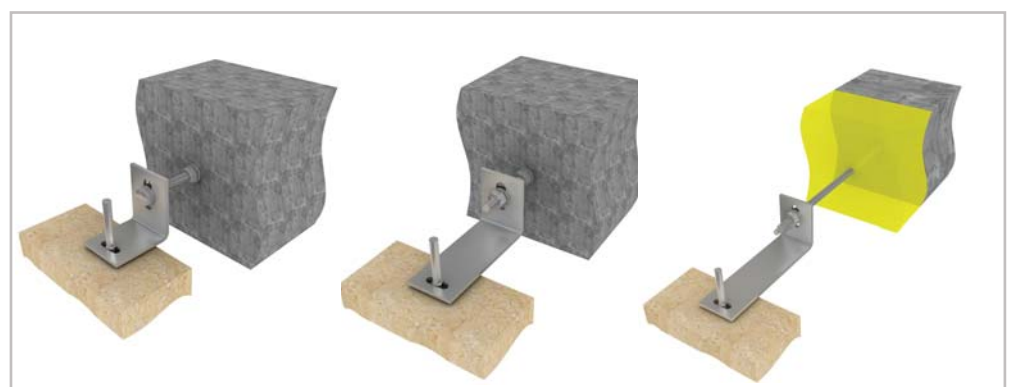
There are many systems to be used for restraining the stone slabs that are supported on a corbel system. Channel systems can be used as they are suitable to be fixed on commonly used steel sections.

Restraint anchors or wall ties can be easily fixed on to the channel at desired position which enables greater flexibility and easiness in installing the slabs.



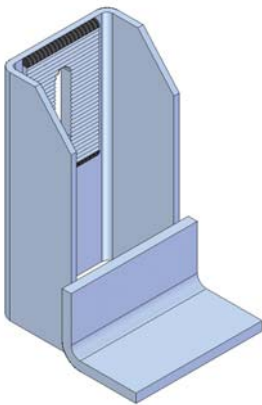
Restraint brackets are used for restraining stone slabs directly on to wall backings. There are various types of brackets that can be used for quick and easy installation.

Depending on the cavity and the existence of insulation on the wall, different type of restraint brackets are preferred for installation.

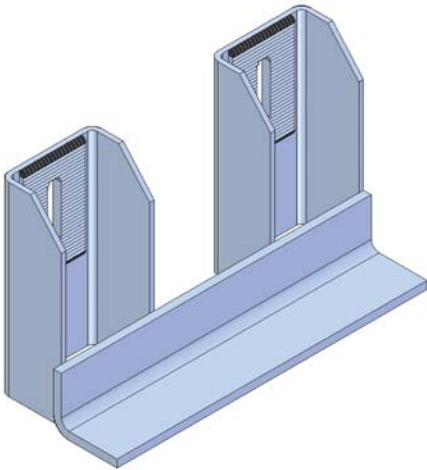


HAZ Corbel Supports
Overview

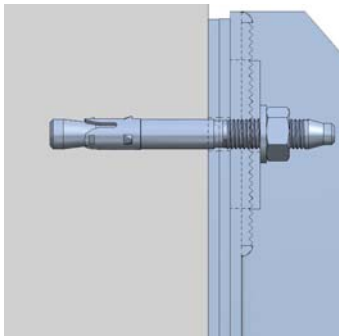
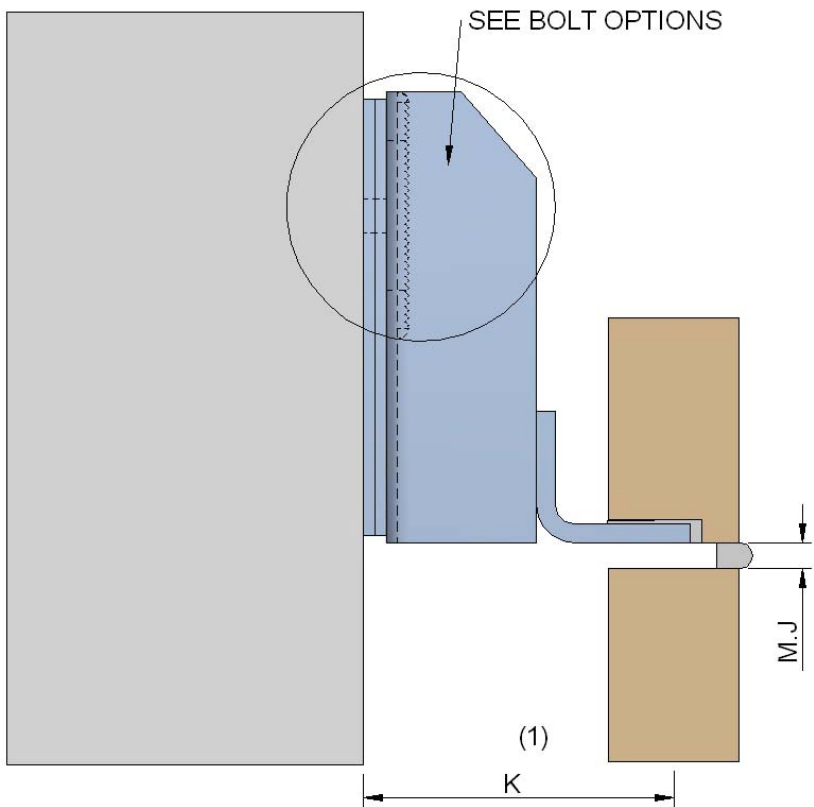
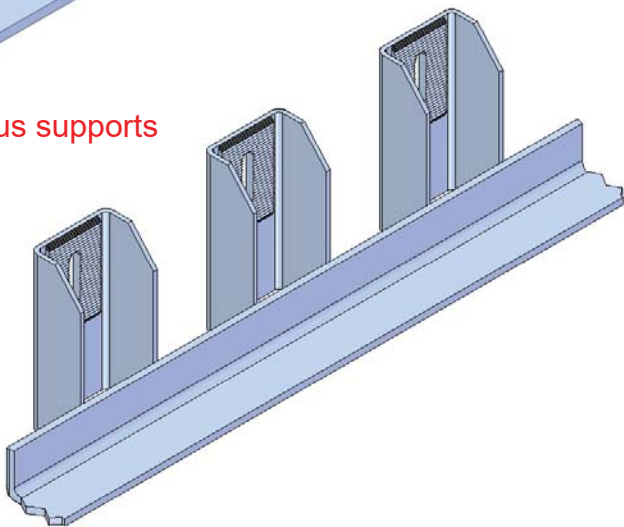
Insert supports



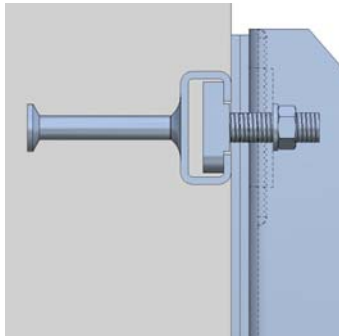
Joint supports



Continuous supports



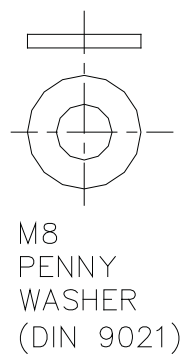
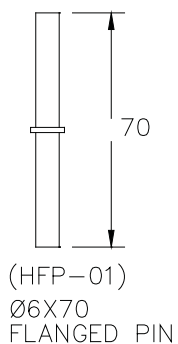
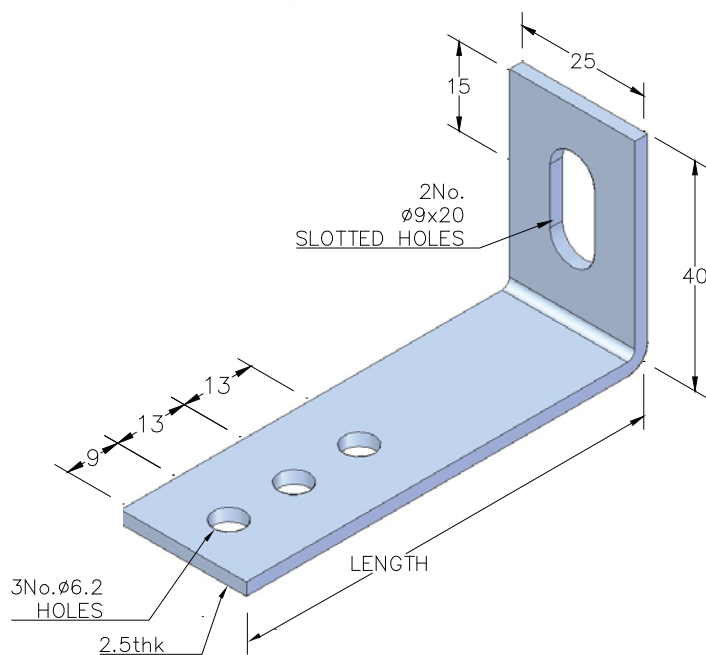
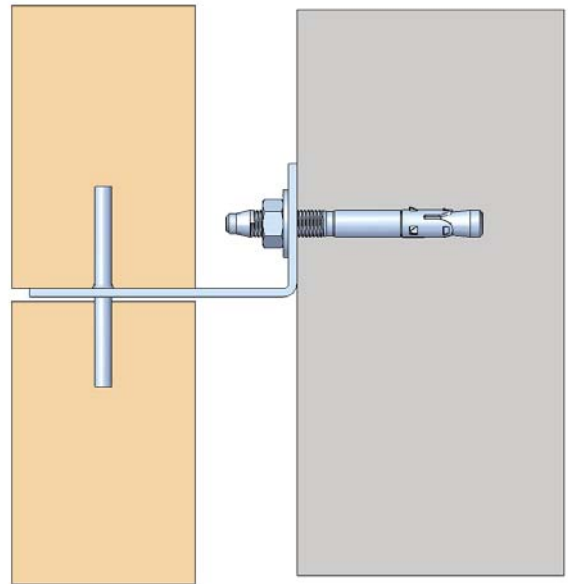
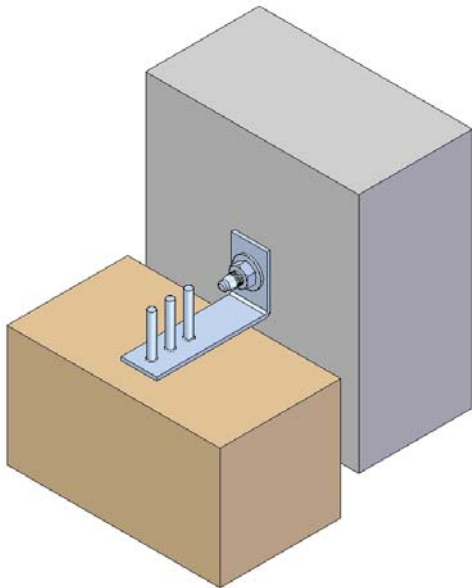
HB03 Through bolts



HMPR Cast in channels

HAZ 3H Restraint Cramp

Technical details

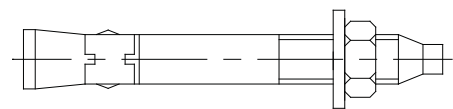


3 HOLE RESTRAINT CRAMP

PRODUCT CODE	LENGTH
3H/60	60
3H/75	75
3H/100	100
3H/125	125
3H/150	150
3H/175	175
3H/200	200
3H/225	225
3H/250	250

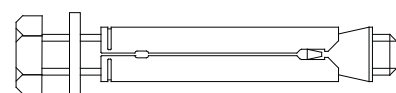
OTHER LENGTHS
AVAILABLE TO ORDER

BOLT OPTIONS



(HB-03)

M8X80 THROUGHBOLT FOR CONCRETE



M8X80 SHELLANCHOR
BOLT FOR
CONCRETE OR
LOW STRENGTH
(7N/mm²) SOLID
BLOCK/CONCRETE

Material

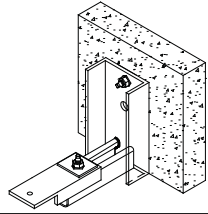
Stainless Steel Type 304 (EN1.4301), A2

HAZ KG 200 Corbel Support Anchor

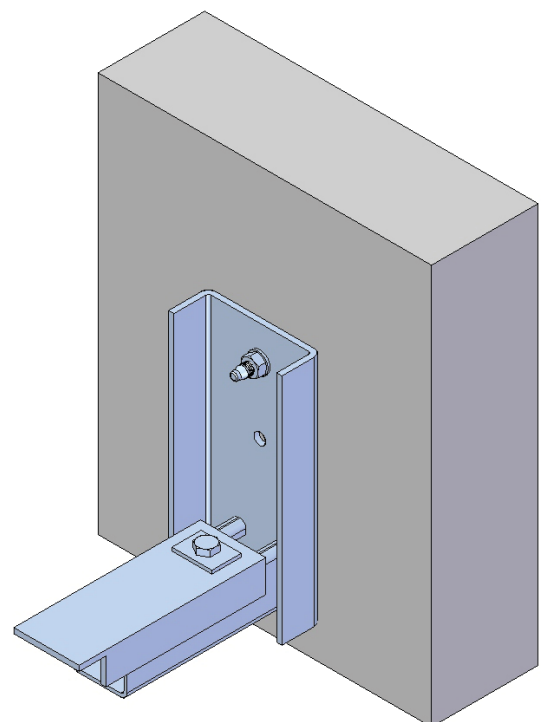
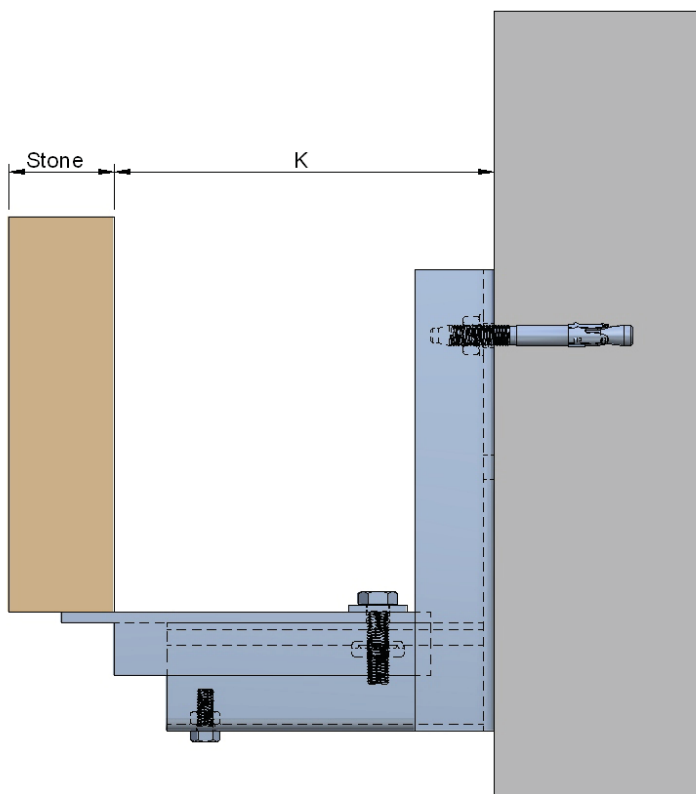
Technical details

HAZ KG200 CORBEL SUPPORT ANCHOR

ADJUSTABLE SUPPORT FOR MAX 50mm THICK STONE CLADDING

ORDER CODE	TYPE	K		ANCHOR
		Min	Max	
KG200C80L	S40/C80/R83-115	103	135	
KG200C110-200S	S40/C110200/R100-148	120	168	
KG200C110-200L	S40/C110200/R149-243	169	263	

NOTE: (1) ALTERNATIVE BOLT POSITION
(2) DESIGN RESISTANCE R_d (EUROCODE)

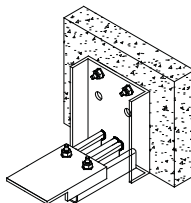


HAZ KG 400 Corbel Support Anchor

Technical details

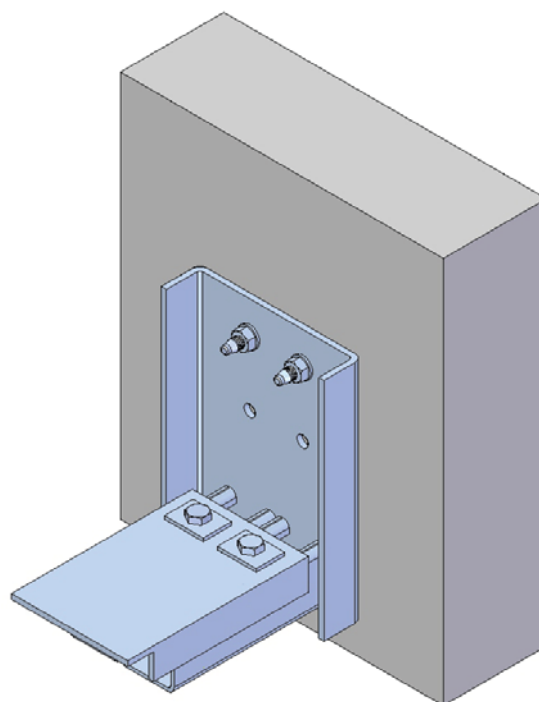
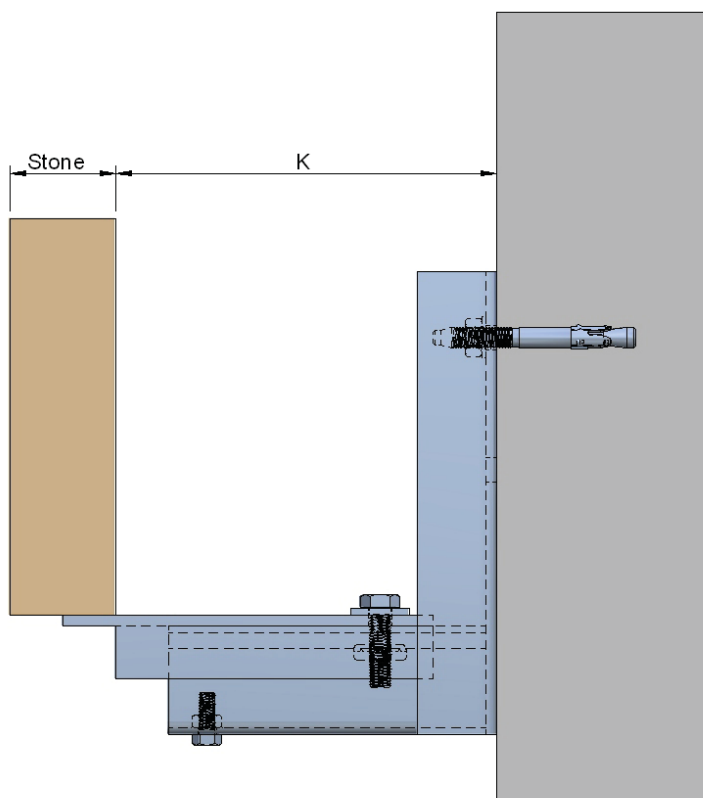
HAZ KG400 CORBEL SUPPORT ANCHOR

ADJUSTABLE SUPPORT FOR MAX 50mm THICK STONE CLADDING

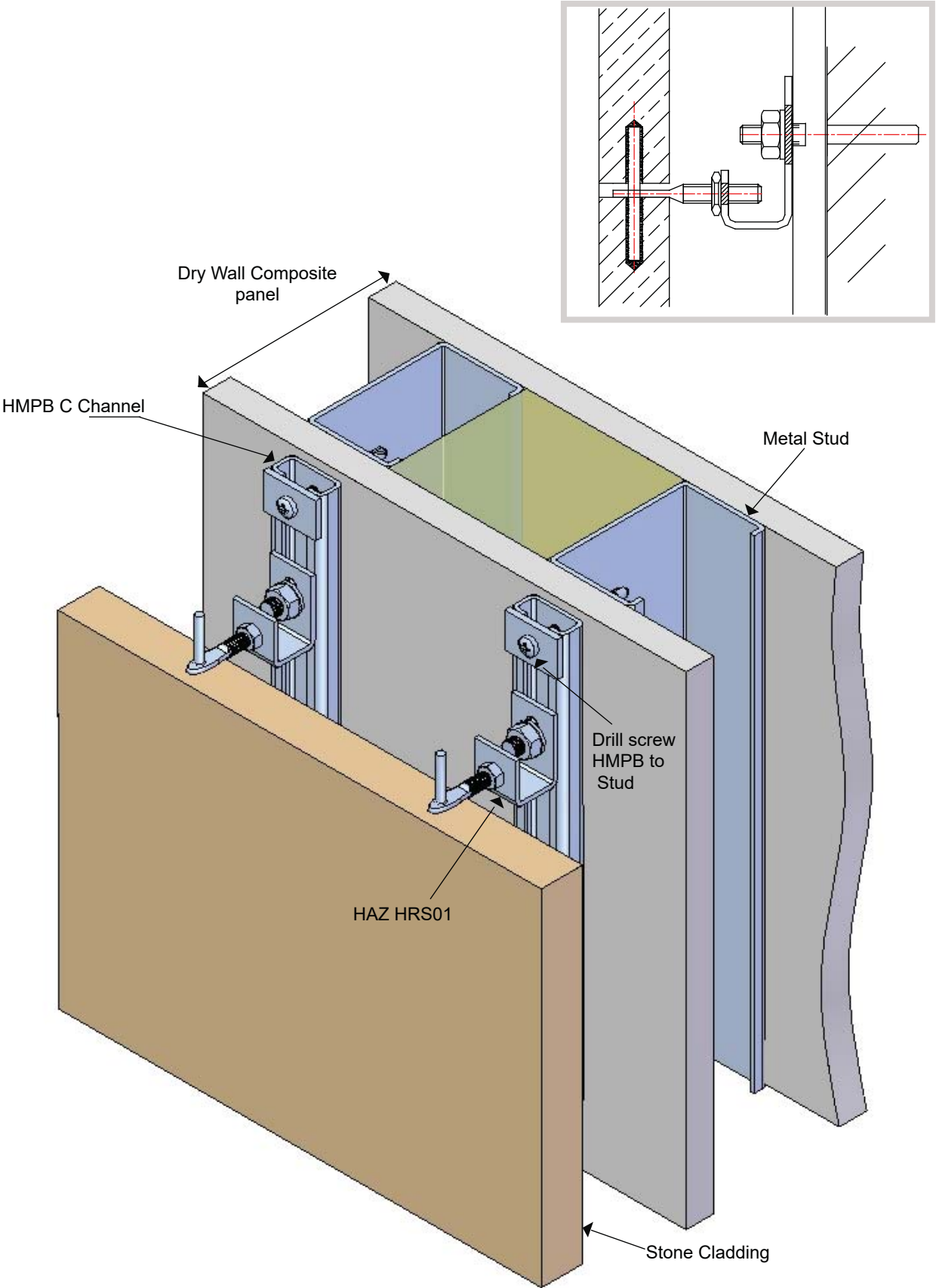
ORDER CODE	TYPE	K		ANCHOR
		Min	Max	
KG400C80L	S40/C80/R83-115D	103	135	
KG400C110-200S	S40/C110200/R100-148D	120	168	
KG400C110-200L	S40/C110200/R149-243D	169	263	

NOTE: (1) ALTERNATIVE BOLT POSITION

(2) DESIGN RESISTANCE R_d (EUROCODE)

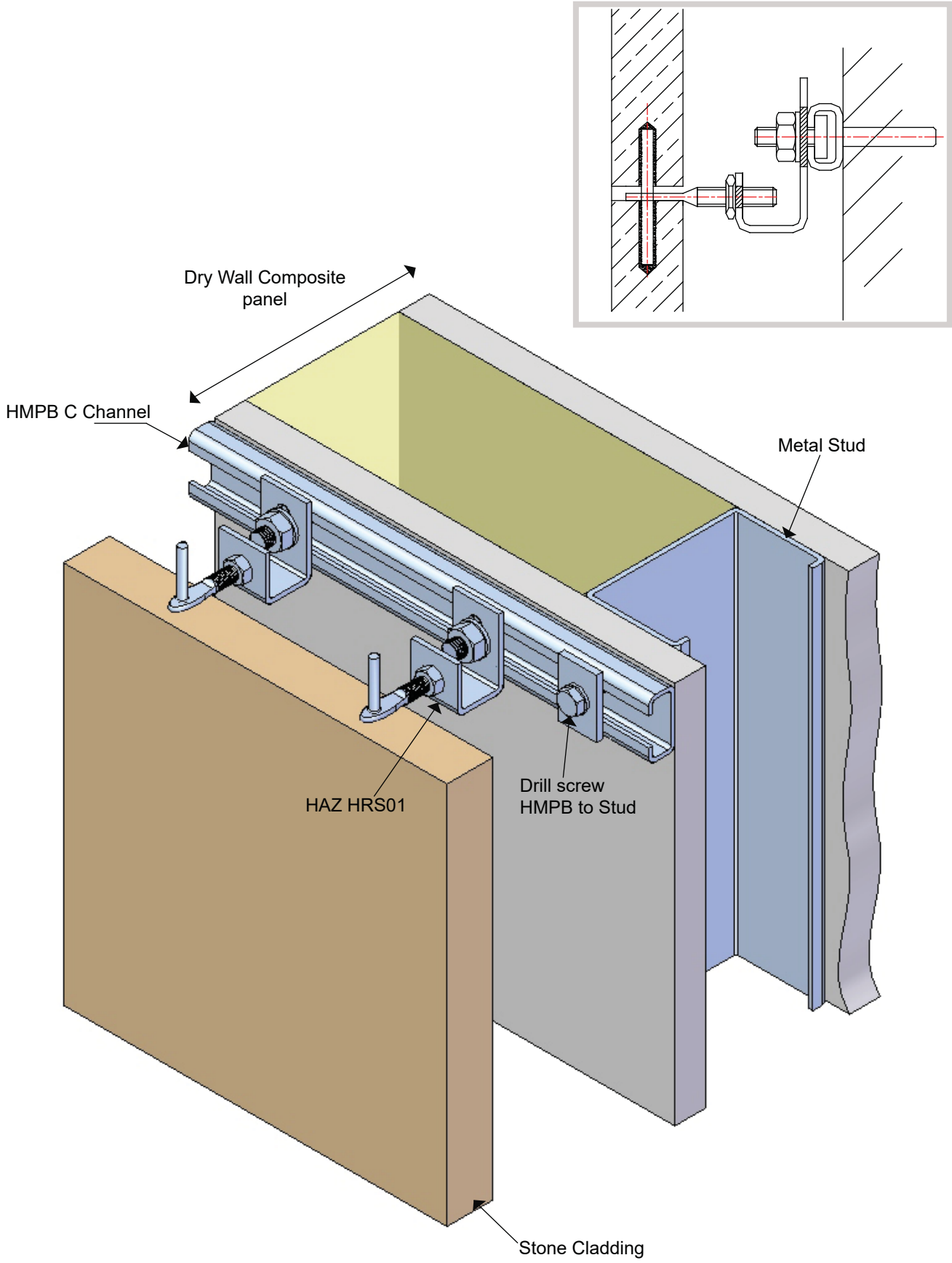


HAZ Vertical Channel Restraint
Overview



HAZ HRS01 Dry Wall Adjustable Restraint for Stone Cladding

HAZ Horizontal Channel Restraint
Overview



HAZ HRS01 Dry Wall Adjustable Restraint for Stone Cladding