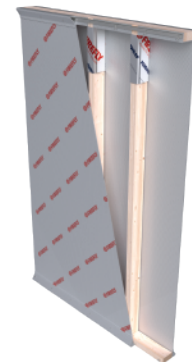


Athena 60:60



DESCRIPTION

FIREFLY® Athena 60:60 is designed to be installed as a two-layer fire barrier system, certified for use on timber to provide compartmentation of larger spaces. Exceeds the Fire Barrier requirements of Building Regulations: Approved Document B (Fire Safety) with 60 minutes Integrity and 60 minutes Insulation.

USE AREAS

FIREFLY® Athena 60:60 is particularly suited for use as a certified fire barrier system on timber. Its unique construction and ease of handling and installation make it perfect for areas involving timber and restricted access / working space such as lofts and roof voids in Social Housing, Care Homes and Student Accommodation.

CONSTRUCTION

Manufactured using layers of woven and non woven glass fibre, specially treated with a proprietary coating to greatly increase fire resistance, and aluminium foil. The product is designed to be installed as a 2-layer system either side of timber, utilising other **FIREFLY®** products including **Penowrap** and High Temperature Adhesive and stainless steel staples.

KEY BENEFITS

- 60 minutes Integrity, 60 minutes Insulation from both sides
- IFC Certified for use on timber – BS476 Parts 20 & 22
- Lightweight, flexible and easy to handle and cut
- Installer-friendly product with installation savings of 30% compared to a triple layer system
- Ideal for lofts and roof voids with restricted access and space
- Works with **FIREFLY® Penowrap** for a perfect barrier solution on timber
- Utilises standard fixings, angles and high temperature adhesives approved for all **FIREFLY®** barriers
- Reaction to fire Classification A1 (BS EN 13501:1)

TITLE	FIREFLY® Athena 60:60
DESCRIPTION	Lightweight, flexible Fire Barrier – combined Insulation and Integrity
CERTIFICATION	Third Party Certified by IFCC. Certificate number: IFCC 1578
APPLICATION	Vertical – 2 layer system 60:60 from both sides
PROPERTIES	<p>Description: Non-toxic, user-friendly, flexible, durable. Easy to manipulate and shape</p> <p>Colour: White</p> <p>Coating: A chemical treatment to optimise thermal properties and help prevent fibre migration</p> <p>Min Thickness: 10mm</p>
SPECIFICATIONS	<p>Vertical: Exceeds 60 minutes integrity with 60 minutes insulation when tested to BS 476 parts 20/22: 1987</p> <p>Reaction to fire Classification A1 (BS EN 13501:1)</p>
CLASSIFICATIONS	Tested to BS476 parts 6 and 7 – Pass (propagation and surface spread of flame)
DIMENSIONS AND PACKAGING	<p>Width: 127cm</p> <p>Roll Length: 6 linear metres</p> <p>Roll Area: 7.62 sqm</p> <p>Packed: Concertinaed and individually wrapped in polythene</p> <p>Weight: 2.4kg/m² minimum</p>

