

GroundGuards®

**TEMPORARY
ACCESS
SYSTEMS**

Product Brochure



Welcome to GroundGuards. As part of the global GreenTek Group, established in 1969, we've spent decades delivering innovative, reliable, and sustainable ground protection solutions that keep projects moving and clients confident. While our business has grown, our commitment to quality and integrity has never wavered.

From our modern UK headquarters, complete with a 30,000 sq ft warehouse and client-accessible training facilities, we're ready to meet the demands of any project. With immediate stock availability, next-day delivery, and flexible purchase or hire options, we ensure you have exactly what you need, when you need it.

**Thank you for choosing GroundGuards.
We're here to protect your ground and
your reputation, every step of the way.**

Laurie Luke
Managing Director

Contents

4	Introduction	24	XtremeMat
6	Weight Loading	26	KerbGuards
8	FastCover	28	FODS
10	FastCover <i>PLUS</i>	30	TrenchGuard
12	LiteTrack	32	Product Comparison
13	ProMat	34	Hire Services
14	EnviroMat	36	Industry Applications
16	MultiTrack	37	Environment
18	MaxiTrack	38	Reviews
20	UltraTrack	39	Contact
22	UltraTrack <i>Pro</i>		



WELCOME TO GROUNDGUARDS

At GroundGuards, we understand that every project is unique. That's why we offer flexible ground protection solutions to suit any site and budget. Whether you need premium mats for outright purchase, short-term hire, cost-saving re-hire and buyback options, or expert installation services, we've got you covered.

With a huge inventory always in stock and available for immediate dispatch, we provide fast, reliable solutions to keep your projects on track. From protecting the ground to upholding your reputation, GroundGuards is your trusted partner in delivering success.

Get in touch today to find the perfect solution for your project - our team is ready to help!



HOW TO CHOOSE THE RIGHT GROUND PROTECTION

Choosing the right ground protection mat is key to ensuring your project runs smoothly while safeguarding the ground beneath. Here's what to consider:

Ground Conditions

Determine whether the ground is firm, soft, or prone to waterlogging. For temporary roadways or other high-impact applications, always account for ground stability—especially in wet weather.

Load Requirements

Consider the weight of your vehicles and the frequency of crossings, as repeated movement increases ground strain, requiring mats that offer consistent support.

Project Duration

Longer projects often face adverse weather conditions. Heavy-duty mats are a better choice for extended timelines or unpredictable environments.

Machinery Type

For steel-tracked machinery, our heavy-duty roadway panels feature a low-profile tread, minimising wear and tear while providing optimal performance.

Pedestrian Access

All of our mats are designed with pedestrian safety in mind. Features such as anti-slip surfaces ensure secure walkways, making them suitable for projects requiring safe, clear paths for both foot and vehicle traffic.

WHY GROUND PROTECTION MATTERS

Ground protection mats evenly distribute weight to prevent damage to both the terrain and your equipment. By choosing the right solution, you'll enhance safety, reduce costs, and ensure smooth, efficient operations across your site.

For tailored advice on selecting the best ground protection for your project, contact our team - we're here to help.



UNDERSTANDING WEIGHT LOADING: THE FACTS BEHIND THE NUMBERS*

When it comes to weight loading, you deserve honesty - not inflated claims.

At GroundGuards, we take a realistic approach. Weight loading figures, like 100 tonnes, represent the compressional strength of the mat itself, but here's the truth: performance depends just as much on the ground beneath. Even the strongest mat is only as effective as the ground beneath it, as soft or unstable terrain can shift or fail under heavy loads. That's why we go beyond the numbers to ensure you get a solution that works in the real world, not just on paper.

WHAT MAKES GROUNDGUARDS DIFFERENT?

We offer a clear and logical product range. Bigger mats generally handle higher weight loads due to their thicker construction, which provides added rigidity. Their larger surface area ensures effective load distribution, and advanced joining methods enhance their overall performance.

Every project is unique, and your success matters to us. That's why our team of experts is here to guide you every step of the way. Whether it's understanding how ground conditions affect performance or selecting the best mat for your site, we're ready to help.

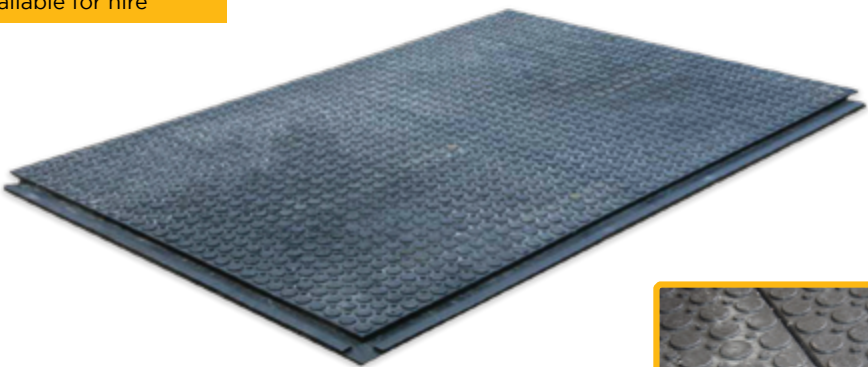
Honest advice. Reliable solutions. Every time.

*Weight loadings are based on firm, dry ground conditions. For tailored recommendations, contact our team.



Available for hire

Light Duty Ground
Protection Mats



Suitable for:



Overlapping Joints for Safety

KEY INFORMATION

FastCover is a lightweight ground protection solution designed for quick installation. Its tool-free overlapping connection creates a secure and stable surface, ideal for temporary walkways, re-routing footpaths, or accommodating light vehicle traffic.

Offering both convenience and reliability, FastCover is perfect for a range of light-duty applications.

- Quick and easy to install with no tools required.
- Durable 22mm panels provide reliable surface protection.
- Ideal for temporary walkways, event flooring, and light-duty traffic areas.

Specifications

Material:	100% recycled PVC
Overall Size:	1.2m x 0.8m x 22mm
Surface Size:	1.16 x 0.76m
Surface Area:	0.88m ²
Weight:	20kg
Tread:	Anti-slip
Connectors:	Overlapping lips
Slip Testing:	BS7976 part 2
Weight Loading:	10t (full guidance on p.6)



IDEAL USES AND APPLICATIONS

FastCover is ideal for light-duty applications, offering dependable performance for temporary walkways, event flooring, hard surface protection, and light vehicle access. Perfect for construction sites and outdoor events, it ensures safe, clean pathways while protecting surfaces.

Designed for versatility, FastCover excels at re-routing footpaths and creating stable access on uneven ground, such as cobblestones, delivering reliable surface protection in any setting, even under challenging site conditions.

QUICK-INSTALL FLOORING SYSTEM



FastCoverPLUS

Light Duty Ground
Protection Mats



Suitable for:



Hand holes and interlocking
lugs make setup easy

KEY INFORMATION

FastCover Plus is a durable and eco-friendly solution for pedestrian walkways and floor protection. Made from 100% recycled PVC, it's lightweight, simple to install, and requires no tools. Ideal for creating safe, clean, and defined pathways with ease.

- Tool-free connection for quick and easy installation.
- Lightweight design allows installation by just one person.
- Made from 100% recycled PVC, ensuring sustainability.

Available Colours:



Specifications

Material:	100% recycled PVC
Overall Size:	1.2m x 0.6m x 22mm
Surface Size:	1.16 x 0.54m
Surface Area:	0.62m ²
Weight:	14.5kg
Tread:	Anti-slip
Connectors:	Interlocking lugs
Slip Testing:	BS7976 part 2
Weight Loading:	10t (full guidance on p.6)



IDEAL USES AND APPLICATIONS

FastCover Plus excels in a variety of applications, from re-routing footpaths during construction to providing sturdy, protective flooring for outdoor events and public gathering spaces.

It's also ideal for creating safe, defined walkways on busy construction sites, helping to reduce slips, trips, and the spread of mud and debris across the site, ensuring a cleaner environment.

QUICK, CLEAN WALKWAY SOLUTION



LiteTrack

Light Duty Ground
Protection Mats

ProMat

Medium Duty
Trackway Mats



Suitable for:



Lightweight, Big Coverage

KEY INFORMATION

LiteTrack is a lightweight ground protection mat with a large footprint, making it perfect for lighter-duty applications. It offers reliable surface protection and stable access while being quick and easy to handle, making it an ideal choice for projects where efficiency is key.

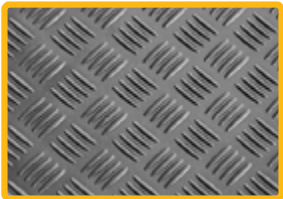
- Lightweight and easy to handle, ideal for fast setup.
- Large 8ft x 4ft footprint for efficient coverage.
- Reliable ground protection for lighter-duty applications.



Specifications	
Material:	100% recycled LDPE
Overall Size:	2.4m x 1.2m x 12mm
Surface Size:	2.4m x 1.2m
Surface Area:	2.88m ²
Weight:	32kg
Connectors:	Bolted or wire connectors
Tread:	<ul style="list-style-type: none">• Walkway tread• Smooth
Weight Loading:	10t (full guidance on p.6)



Suitable for:



Reversible walkway tread

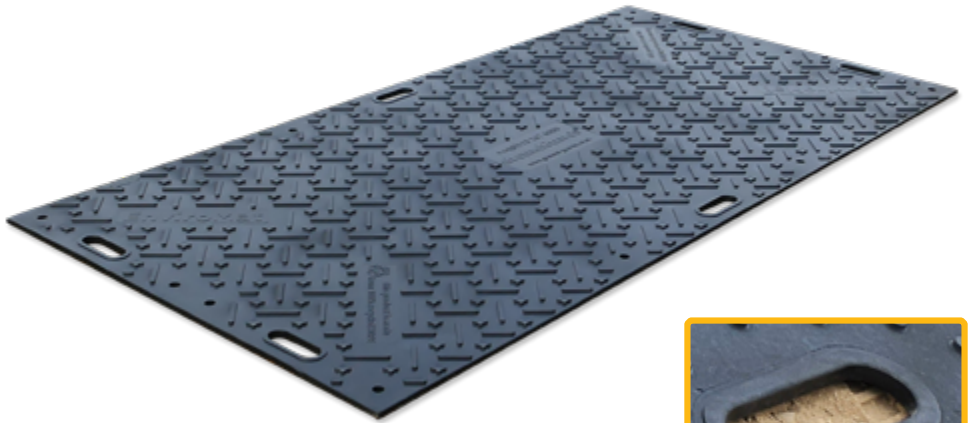
KEY INFORMATION

ProMat is the most cost-effective tough mat on the market, offering exceptional durability and reliability for challenging projects. Designed for repeated use, it's the perfect budget-friendly solution for construction sites, temporary roadways, and equipment staging.

- Highly cost-effective, ideal for projects on a budget.
- Durable and long-lasting, designed for repeated use.
- Built for strength in demanding conditions.



Specifications	
Material:	100% Recycled HDPE
Overall Size:	2.4m x 1.2m x 12mm
Surface Size:	2.4m x 1.2m
Surface Area:	2.88m ²
Weight:	38kg
Connectors:	Bolted or wire connectors
Tread:	<ul style="list-style-type: none">• Walkway tread• Roadway tread
Weight Loading:	60t (full guidance on p.6)



Suitable for:



Engineered for Easy Handling

KEY INFORMATION

EnviroMat combines compression-moulded durability with a flat tread for secure traction. Its unique interlocking pattern ensures safe stacking, while large ergonomic hand holes allow quick, easy handling, even with gloves. A user-friendly solution for efficient ground protection.

- Compression-moulded for exceptional durability.
- MicroTraction technology provides superior grip and enhanced safety.
- Ergonomic hand holes fit gloved adult hands for easy handling.



Specifications	
Material:	100% Recycled HDPE
Overall Size:	2.4m x 1.2m x 12mm
Surface Size:	2.4m x 1.2m
Surface Area:	2.88m²
Weight:	40kg
Connectors:	Bolted or wire connectors
Tread:	<ul style="list-style-type: none">• Walkway tread• Roadway tread
Weight Loading:	80t (full guidance on p.6)



IDEAL USES AND APPLICATIONS

EnviroMat is ideal for construction sites, providing temporary roadways and walkways to protect sensitive ground from heavy vehicles and foot traffic. Its non-slip surface ensures safe access, even in wet conditions, while its durable design handles the toughest environments.

For outdoor events, EnviroMat creates stable paths to guide attendees without damaging grass or soil. In landscaping, it shields delicate surfaces like soil and plants during maintenance or installation, offering a reliable, reusable solution for diverse applications.

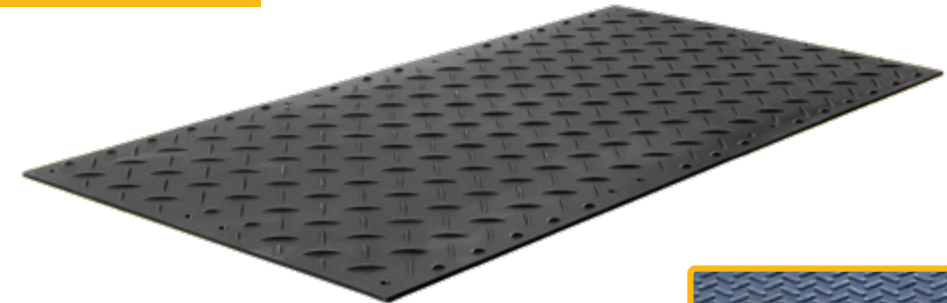
DURABLE, RELIABLE GROUND PROTECTION



MultiTrack

Available for hire

Medium Duty
Trackway Mats



Suitable for:



Reversible Tread Pattern

KEY INFORMATION

MultiTrack is the go-to solution for medium-duty ground protection, delivering durability and versatility across a wide range of applications.

Built to withstand demanding conditions, it offers reliable surface protection and stable access for vehicles and equipment.

MultiTrack combines strength and practicality, making it a trusted choice for professionals in construction and beyond.

- Tough and durable, ideal for medium-duty applications.
- Versatile and cost-effective for diverse projects.
- Designed to protect surfaces while ensuring safe access.

Specifications

Material:	100% Recycled HDPE
Overall Size:	2.44m x 1.22m x 13mm
Surface Size:	2.44m x 1.22m
Surface Area:	2.98m ²
Weight:	39kg
Tread:	<ul style="list-style-type: none">• Walkway tread• Roadway tread
Connectors:	BS7976 part 2
Slip Testing:	Bolted or wire connectors
Weight Loading:	120t (full guidance on p.6)

IDEAL USES AND APPLICATIONS

MultiTrack is the ideal solution for creating temporary car parks, enabling vehicle access on softer ground, and protecting grassed areas from damage. Its durable construction ensures stability and surface protection, even in challenging conditions, making it perfect for projects that require medium-duty performance.

Whether used for managing event parking, maintaining access on uneven terrain, supporting geotechnical projects, or safeguarding lawns and landscapes, MultiTrack delivers reliable and versatile ground protection for every scenario.

VERSATILE GROUND COVER



MaxiTrack

Available for hire

Heavy Duty
Trackway Mats



Suitable for:



Easily installed with a two-person team

KEY INFORMATION

MaxiTrack is the strongest, heavy-duty mat you can install by hand. Its solid construction, overlapping edges, and quick-lock bolts create a seamless, stable surface that's easy to set up without heavy equipment.

MaxiTrack delivers strength and versatility in a portable, easy-to-handle design, perfect for demanding projects.

- Lightweight at just 40kg, making installation simple and machinery-free.
- Overlapping edges ensure a uniform, professional finish.
- Quick-lock bolts provide secure, fast connections.
- Flexible configurations to suit various applications.

Specifications

Material:	100% Recycled HDPE
Overall Size:	1.9 x 1.0m x 23mm
Surface Size:	1.8m x 0.9m
Surface Area:	1.62m ²
Weight:	40kg
Tread:	Smart Grip™
Connectors:	6 fluted bolts per mat
Slip Testing:	BS7976 part 2
Weight Loading:	130t (full guidance on p.6)

IDEAL USES AND APPLICATIONS

MaxiTrack is a game-changer for projects that demand heavy-duty performance and flexibility. Designed for rapid deployment, it ensures reliable ground protection in tough conditions while minimising disruption to underlying surfaces. Its robust construction makes

it ideal for protecting sensitive ground, enabling vehicle access, and supporting equipment in remote or challenging locations. MaxiTrack is the trusted choice for contractors and event managers seeking durable, reusable mats that balance strength with ease of use.

COMPACT STRENGTH FOR HEAVY LOADS



UltraTrack

Available for hire

Heavy Duty
Trackway Mats



Suitable for:



UltraTrack Connector

KEY INFORMATION

UltraTrack is a durable HDPE panel system built for large-scale projects and demanding conditions. Its exceptional strength and versatility ensure reliable ground protection and stable access, making it the trusted choice for high-traffic areas.

- Heavy-duty HDPE construction for maximum durability.
- Provides stable access for vehicles and machinery.
- Ideal for large-scale projects, including construction and events.



Specifications

Material:	100% Recycled HDPE
Overall Size:	3m x 2.5m x 38mm
Surface Size:	3m x 2.5m
Surface Area:	7.5m ²
Weight:	295kg
Tread:	<ul style="list-style-type: none">• Deep tread for tyres• Low-profile tread for steel tracks
Connectors:	<ul style="list-style-type: none">• Standard M16 bolts with steel straps.• Steel reinforced connection points.
Weight Loading:	150t (full guidance on p.6)



IDEAL USES AND APPLICATIONS

UltraTrack is designed to excel in high-pressure environments, providing reliable performance on uneven or soft ground. Its advanced HDPE construction offers exceptional load distribution and resistance to cracking or warping, ensuring longevity even under the most demanding conditions.

Ideal for temporary roadways, crane pads, and staging heavy machinery, UltraTrack minimises ground disturbance and maximises safety. Its large panels are simple to deploy and retrieve, reducing labour costs and improving on-site efficiency, making it a trusted solution for critical projects.

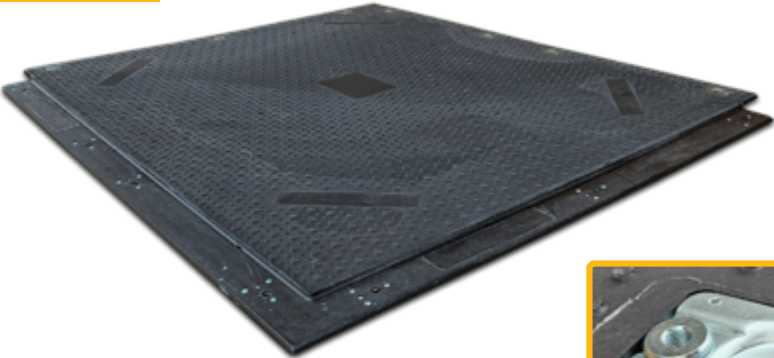
RELIABLE HEAVY-DUTY PANELS



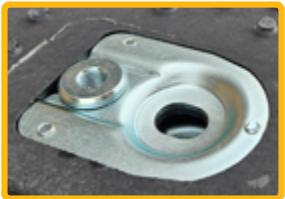
UltraTrackPro

Available for hire

Heavy Duty
Trackway Mats



Suitable for:



UltraTrack Pro Connector

KEY INFORMATION

UltraTrack Pro revolutionises ground protection with fewer mats covering more area, simplifying installation. Made from durable HDPE with overlapping edges, it forms a reliable surface for large-scale projects.

Its low-profile tread suits steel-tracked vehicles, reducing wear and tear, making it a smarter, efficient solution for heavy-duty ground protection.

- Covers more ground with fewer mats for efficient setup.
- Overlapping edges create a seamless, uniform surface.
- Durable HDPE construction with quick-connect bolts for secure installation.

Specifications

Material:	100% Recycled HDPE
Overall Size:	3m x 2.5m x 38mm
Surface Size:	2.85m x 2.35m
Surface Area:	6.7m ²
Weight:	295kg
Tread:	<ul style="list-style-type: none">• Deep tread for tyres• Low-profile tread for steel tracks
Connectors:	<ul style="list-style-type: none">• Standard M16 bolts• Steel reinforced connection points
Weight Loading:	170t (full guidance on p.6)



IDEAL USES AND APPLICATIONS

UltraTrack Pro's overlapping edge design is a game-changer for ground protection, creating a seamless barrier that prevents mud and debris from seeping through, keeping worksites clean and safe. Its innovative reversible tread pattern includes a low-traction surface, making it perfect for use with steel-tracked vehicles while maintaining stability for other machinery.

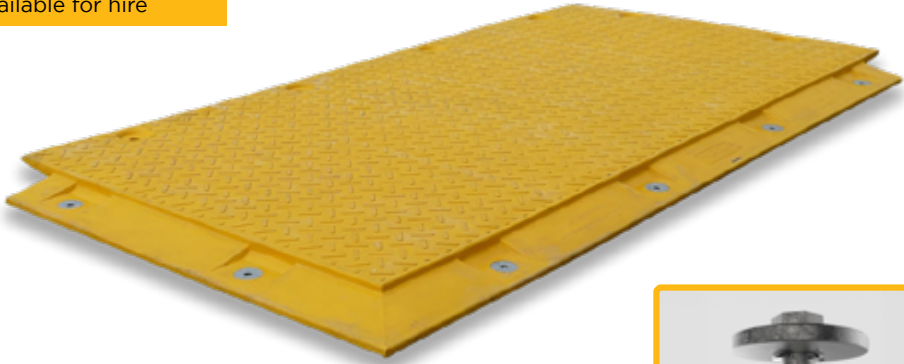
Engineered for demanding environments, UltraTrack Pro ensures secure connections and uniform strength across its surface, delivering unmatched reliability for construction sites, temporary roadways, and heavy-duty projects. Its design maximises efficiency while maintaining a clean, stable, and professional work area.

SEAMLESS, SECURE GROUND COVER



Available for hire

Specialised
Solutions



Suitable for:



Mega-Thread bolts

KEY INFORMATION

XtremeMat is designed for the toughest conditions, offering exceptional strength, durability, and efficiency. Its one-piece HDPE core resists wear, prevents broken corners, and blocks contaminants, ensuring reliable performance. For stability and safety on challenging terrains, XtremeMat is the ultimate solution.

- Withstands loads up to 600 psi, perfect for extreme applications.
- Unique bolt system keeps connections secure under heavy use.
- High-visibility yellow for enhanced job site safety.
- Buoyant core makes it ideal for marshy or swampy ground.
- At 385kg each, 50 mats per truck maximise load efficiency, reduce transport costs, and accelerate ROI.

Specifications

Material:	100% HDPE - Solid one-piece mat.
Overall Size:	4.34m x 2.29m x 100mm
Surface Size:	4.1m x 2.06m
Surface Area:	8.46m ²
Weight:	385kg
Temperature Rating:	-34°C to +49°C
Connectors:	6 self-aligning bolts
Tread:	Low-profile roadway tread
Compressional Strength:	40kg/cm ² (600psi)
UV Protection:	Yes
Static Dissipative Protection:	Yes
Weight Loading:	400t (full guidance on p.6)



IDEAL USES AND APPLICATIONS

XtremeMat is purpose-built for extreme environments, excelling on marshy or swampy ground thanks to its buoyant HDPE core. Its rugged design ensures stable access and work platforms in the most challenging conditions, providing a dependable solution where other mats fall short.

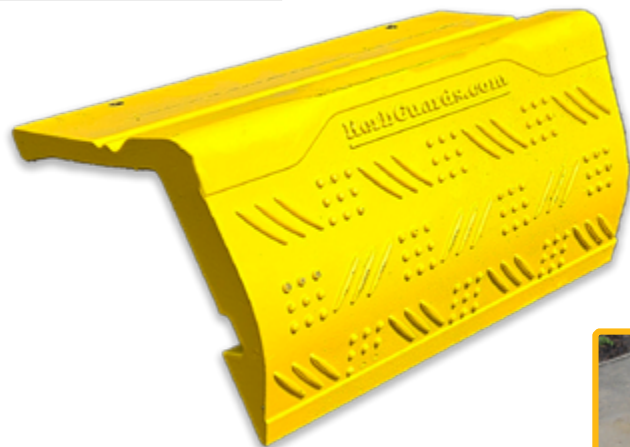
Ideal for use in oil and gas fields, infrastructure projects, and environmentally sensitive sites, XtremeMat delivers consistent performance under heavy loads while minimising ground disturbance. Its versatility and reliability make it the ultimate choice for demanding terrains.

TOUGH CONDITIONS, TOUGHER MATS



KerbGuards

Specialised
Solutions



Suitable for:



Haunch with temporary tarmac

KEY INFORMATION

KerbGuards are the go-to solution for protecting kerbs during construction and landscaping. Designed to withstand the impact of heavy vehicles and machinery, they help prevent costly damage while keeping your site looking professional. Easy to use and highly cost-effective, they ensure kerbs remain intact, saving you time and repair expenses.

- Protects kerbs from chips, cracks, and impact damage.
- Quick and simple to install, saving time on-site.
- Durable and reusable, offering long-term cost savings.

Available Colours:



KG400 - Specifications

Width:	400mm
Height:	160mm
Depth:	200mm
Weight:	3.7kg
Tread:	Anti-slip
Colour options:	Black, Yellow, Bespoke
Material:	Recycled PVC
Spacers:	Optional for top coated pavements

KG490 - Specifications

Width:	900mm
Height:	160mm
Depth:	200mm
Weight:	8.8kg
Tread:	Anti-slip
Colour options:	Black, Yellow, Bespoke
Material:	Recycled PVC
Spacers:	Optional for top coated pavements

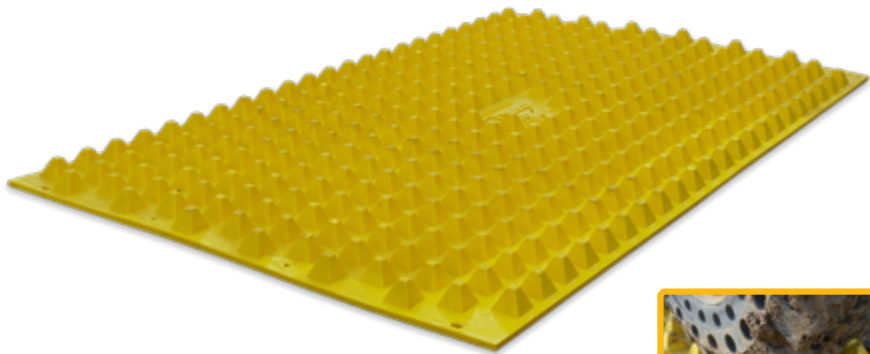
IDEAL USES AND APPLICATIONS

KerbGuards are built to withstand the demands of busy construction and landscaping sites. Acting as a protective barrier, they absorb impacts and prevent damage to kerbs caused by heavy vehicles and equipment, keeping infrastructure intact and secure.

Ideal for roadworks, site access routes, and urban development projects, KerbGuards help avoid costly delays and maintenance. By preserving kerb integrity, they ensure a professional appearance throughout the project.

PROTECT KERBS WITH EASE





Suitable for:



Minimises debris tracking for cleaner surroundings

KEY INFORMATION

The FODS (Foreign Object Debris System) MudStopper Mat is a revolutionary, reusable solution for reducing mud and debris transfer from vehicles to public roads. Engineered with raised nodules, this innovative mat effectively cleans tyres as vehicles drive over it, helping to maintain site cleanliness and minimise compliance risks. Ideal for construction sites, agricultural projects, and event management, the FODS MudStopper Mat ensures roads remain clean and safe.

- The Foreign Object Debris System efficiently removes mud and dirt from tyres, preventing contamination beyond the site.
- Built for repeated use, this sustainable solution reduces reliance on disposable alternatives.
- Lightweight and equipped with pre-fitted anchor points, the mat is quick to set up and move as required.

Specifications

Material:	HDPE
Overall Size:	3.6m x 2.1m x 75mm
Surface Area:	7.56m ²
Weight:	195kg
Connectors:	Ground anchors
Weight Loading:	80t (full guidance on p.6)



IDEAL USES AND APPLICATIONS

FODS mats are a tough, reliable way to manage debris from vehicles. Built to perform in challenging conditions, they offer a practical, reusable alternative to traditional trackout methods, helping you maintain clean and compliant sites with ease.

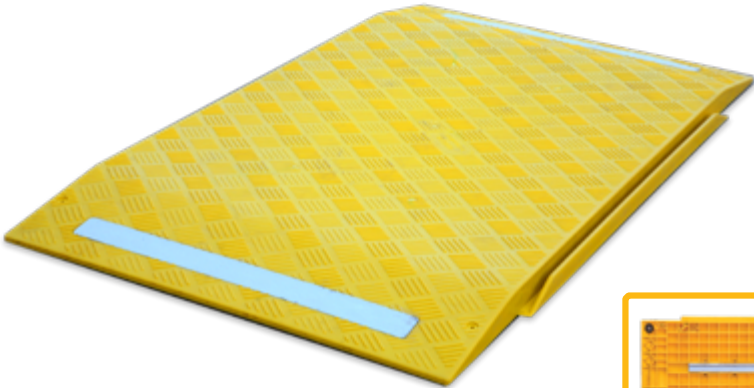
Lightweight, durable, and easy to clean, FODS mats are simple to move and reuse. They're perfect for construction, farming, and event projects where flexibility and reliability are essential.

LEAVE THE DIRT BEHIND

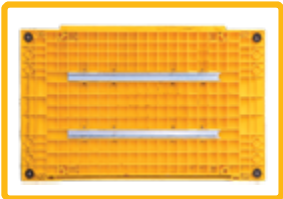


TrenchGuard

Specialised
Solutions



Suitable for:



Reinforced for reliable strength

KEY INFORMATION

TrenchGuard is a simple yet reliable solution for keeping trenches, manholes, and utility works safe and secure.

Lightweight and tough, it's easy to handle and install, making it ideal for construction sites, utility projects, and maintenance work.

Designed to support pedestrians and light vehicles, TrenchGuard helps reduce risks while keeping your site safe and compliant.

- Safeguards open excavations, preventing accidents and ensuring safety.
- Tough enough for the job yet quick to set up and move.
- Designed for extra grip, even in wet or muddy conditions.

Specifications

Material:	HDPE
Overall Size:	1.4m x 0.8m x 50mm
Weight:	18kg
Connectors:	Interlocking flanges
Weight Loading:	500kg per wheel (full guidance on p.6)



IDEAL USES AND APPLICATIONS

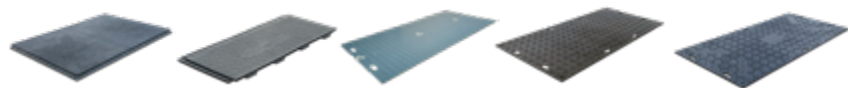
TrenchGuard is perfect for securing trenches and excavations across a wide range of projects, including construction, roadworks, and utility maintenance. Its lightweight, durable design makes it easy to handle and reposition, ensuring flexibility for dynamic and fast-paced work environments.

Whether safeguarding pedestrian pathways or supporting light vehicle access, TrenchGuard is ideal for creating safe, compliant sites. Its flexibility makes it a reliable solution for ensuring the safety of both workers and the public.

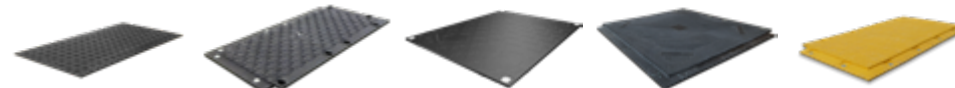
COVER AND PROTECT



Our Range



	FastCover	FastCover PLUS	LiteTrack	ProMat	EnviroMat
Weight Loading:	10t*	10t*	10t*	60t*	80t*
Material:	100% recycled PVC	100% recycled PVC	100% recycled LDPE	100% Recycled HDPE	100% Recycled HDPE
Overall Size:	1.2m x 0.8m x 22mm	1.2m x 0.8m x 22mm	2.4m x 1.2m x 12mm	2.4m x 1.2m x 12mm	2.4m x 1.2m x 12mm
Surface Size:	1.16 x 0.76m	1.16 x 0.54m	2.4m x 1.2m	2.4m x 1.2m	2.4m x 1.2m
Surface Area:	0.88m ²	0.62m ²	2.88m ²	2.88m ²	2.88m ²
Weight:	20kg	14.5kg	32kg	38kg	40kg
Tread:	Anti-slip	Anti-slip	<ul style="list-style-type: none"> • Walkway tread • Smooth 	<ul style="list-style-type: none"> • Walkway tread • Roadway tread 	<ul style="list-style-type: none"> • Walkway tread • Roadway tread
Connectors:	Overlapping lips	Interlocking lugs	Bolted or wire connectors	Bolted or wire connectors	Bolted or wire connectors
Slip Testing:	BS7976 part 2	BS7976 part 2	-	-	-



	MultiTrack	MaxiTrack	UltraTrack	UltraTrackPro	XtremeMat
	120t*	130t*	150t*	170t*	400t*
	100% Recycled HDPE	100% Recycled HDPE	100% Recycled HDPE	100% Recycled HDPE	Ultra tough HDPE plastic outer layer with a hard foam inner core
	2.44m x 1.22m x 13mm	1.9m x 1.0m x 23mm	3m x 2.5m x 38mm	3m x 2.5m x 38mm	4.34m x 2.29m x 100mm
	2.44m x 1.22m	1.8m x 0.9m	3m x 2.5m	2.85m x 2.35m	4.1m x 2.06m
	2.98m ²	1.62m ²	7.5m ²	6.7m ²	8.46m ²
	39kg	40kg	295kg	295kg	385kg
	<ul style="list-style-type: none"> • Walkway tread • Roadway tread 	Smart Grip™	<ul style="list-style-type: none"> • Deep tread for tyres • Low-profile tread for steel tracks 	<ul style="list-style-type: none"> • Deep tread for tyres • Low-profile tread for steel tracks 	Low-profile roadway tread
	Bolted or wire connectors	6 fluted bolts per mat	Standard M16 bolts with steel straps	<ul style="list-style-type: none"> • Standard M16 bolts • Steel reinforced connection point 	6 self-aligning bolts per mat
	BS7976 part 2	BS7976 part 2	-	-	-

* See page 6 for important details on weight distribution and limits.

HIRE SERVICES

Trackway Hire for Every Project

GroundGuards' Trackway Hire provides flexible, cost-effective ground protection solutions for any project. When outright purchase isn't practical, our hire service keeps your projects moving, with re-hire options available to support your clients' deadlines.

Our expert team offers site visits and consultations to ensure you get the right product, and our professional installation service guarantees smooth delivery.

HASSLE-FREE INSTALLATION

Our skilled installation team ensures your trackway is set up efficiently and securely, no matter the ground conditions or site challenges. From precise placement to quick removal after use, we handle every step with care, minimising disruption and keeping your project on schedule.

Choose GroundGuards for reliable, tailored hire solutions.

Contact us today to arrange your site visit and consultation!



Scan the QR code to get a quote today!

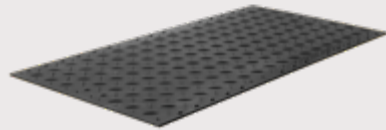
HIRE FLEET SOLUTIONS

FastCover



Lightweight and quick to install for walkways and surface protection.

MultiTrack



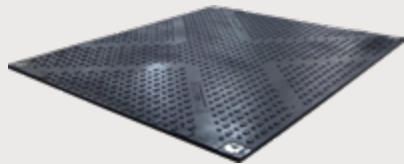
Versatile mat for medium-duty vehicle access up to 120 tonnes.

MaxiTrack



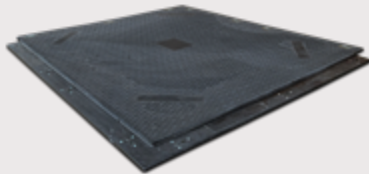
Heavy-duty mat, installable by hand, supports 130-tonne loads.

TuffTrak



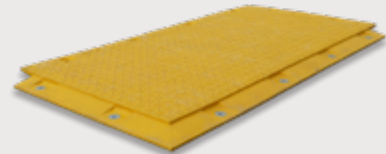
High-strength panel system with dual tread for 150-tonne loads.

UltraTrackPro



Seamless interlocking mat, handling vehicle loads up to 170 tonnes.

XtremeMat



Ultimate mat for extreme terrains, supporting up to 400 tonnes.



INDUSTRY APPLICATIONS



Housebuilding: Clean, safe walkways on-site.



Construction: Supporting heavy vehicles and cranes.



Utilities: Protection during maintenance.



Events: Clean, safe walkways for festivals.



Agriculture: Temporary paths on farmland.



Geotechnical: Stable access for surveys.



Leisure and Tourism: Walkways and parking at attractions.



Explore our
case studies

Scan the QR
code to get a
quote today!



CARING FOR THE PLANET, TOGETHER

Protecting the environment matters to all of us. That's why we've designed our mats to be as sustainable as possible - made from recycled materials, built to last, and reducing ground damage, noise, and dust. Even our mat washing system is designed for sustainability, using an underground rainwater storage tank to minimise waste. And when our mats reach the end of their life, they are fully recyclable. Every decision we make is guided by a simple belief: we can care for the planet while supporting the work that keeps our world moving forward.

Our 5-star Trustpilot rating speaks for itself. GroundGuards is trusted by professionals across industries for exceptional service, reliable products, and fast delivery. Here's what some of our happy customers have to say:

"Excellent service! The team took on a last-minute job and delivered perfectly. Efficient, reliable, and great communication. Highly recommend!"

"Brilliant product that made a waterlogged site accessible. From consultation to delivery, the team was helpful and professional. Excellent results!"

"We replaced failing haul roads with mats installed at short notice. They handled heavy machinery easily and left the ground intact after removal. Outstanding service!"

"Needed extra mats urgently, and GroundGuards delivered without delay thanks to their extensive hire fleet. Great communication and fast turnaround!"



Rated Excellent
on Trustpilot



Scan the QR
code to see more
5* reviews on
Trustpilot



HEAD OFFICE

Ground-Guards Ltd
Rudgate, Walton, Leeds,
LS23 7AU, UK

+44 (0) 113 267 6000

CONTACT US

E: info@ground-guards.co.uk

W: ground-guards.co.uk

T: +44 (0) 113 267 6000

EXPORT SALES OFFICE

Southpoint House, Old Brighton
Road, Lowfield Heath, Crawley,
West Sussex RH11 OPR, UK

+44 (0) 7377 585 532

SOCIAL MEDIA

 GroundGuards

 GroundGuards

 Ground.Guards

 GroundGuards

GroundGuards[®]

TEMPORARY ACCESS SYSTEMS



+44 (0) 113 267 6000



info@ground-guards.co.uk



ground-guards.co.uk



GGUK/BRV1